

COLUMBIA

ELECTION DISTRICT 5

VILLAGE OF WILDE LAKE

SECTION 4

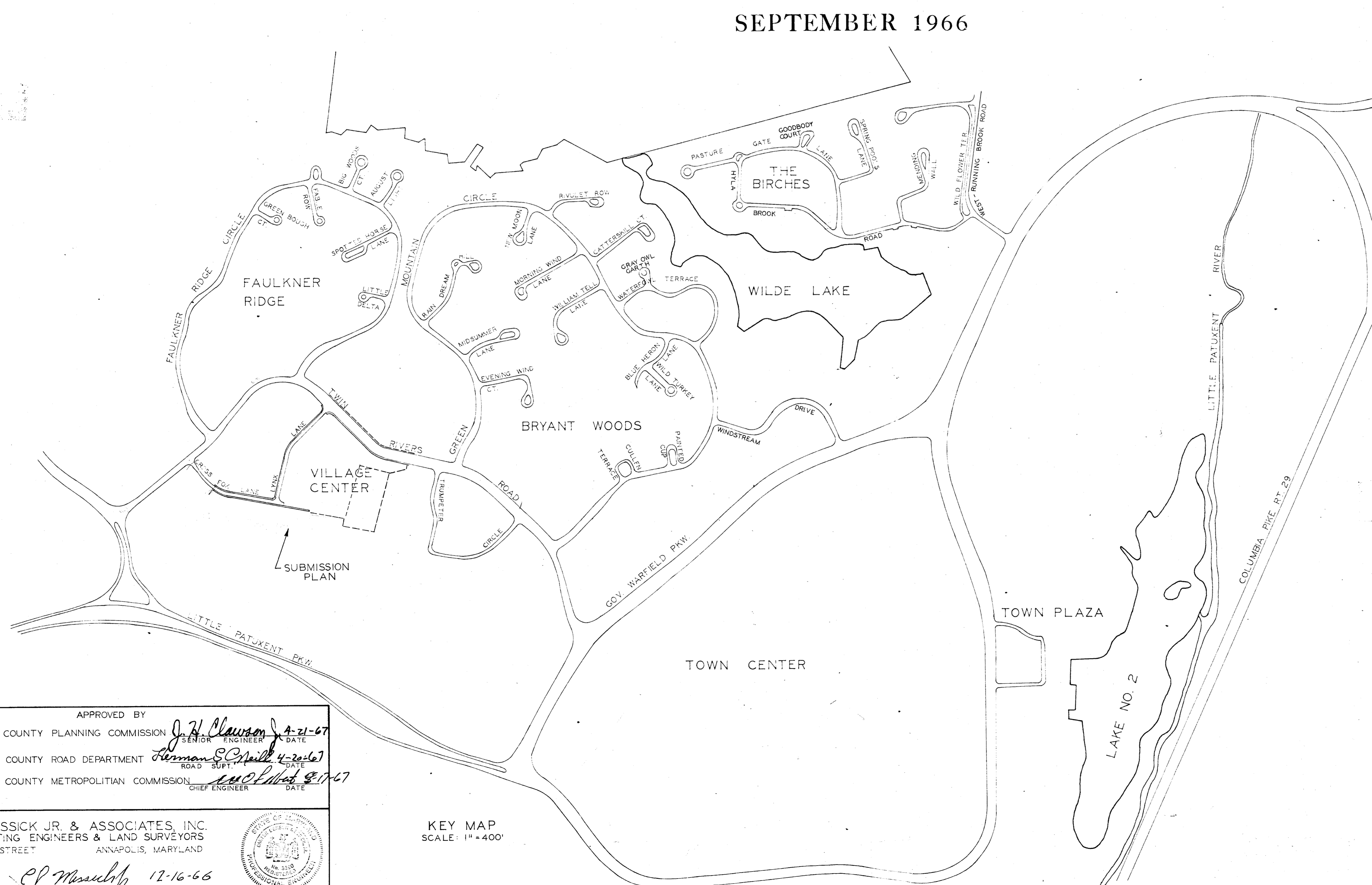
VILLAGE CENTER

HOWARD COUNTY MARYLAND

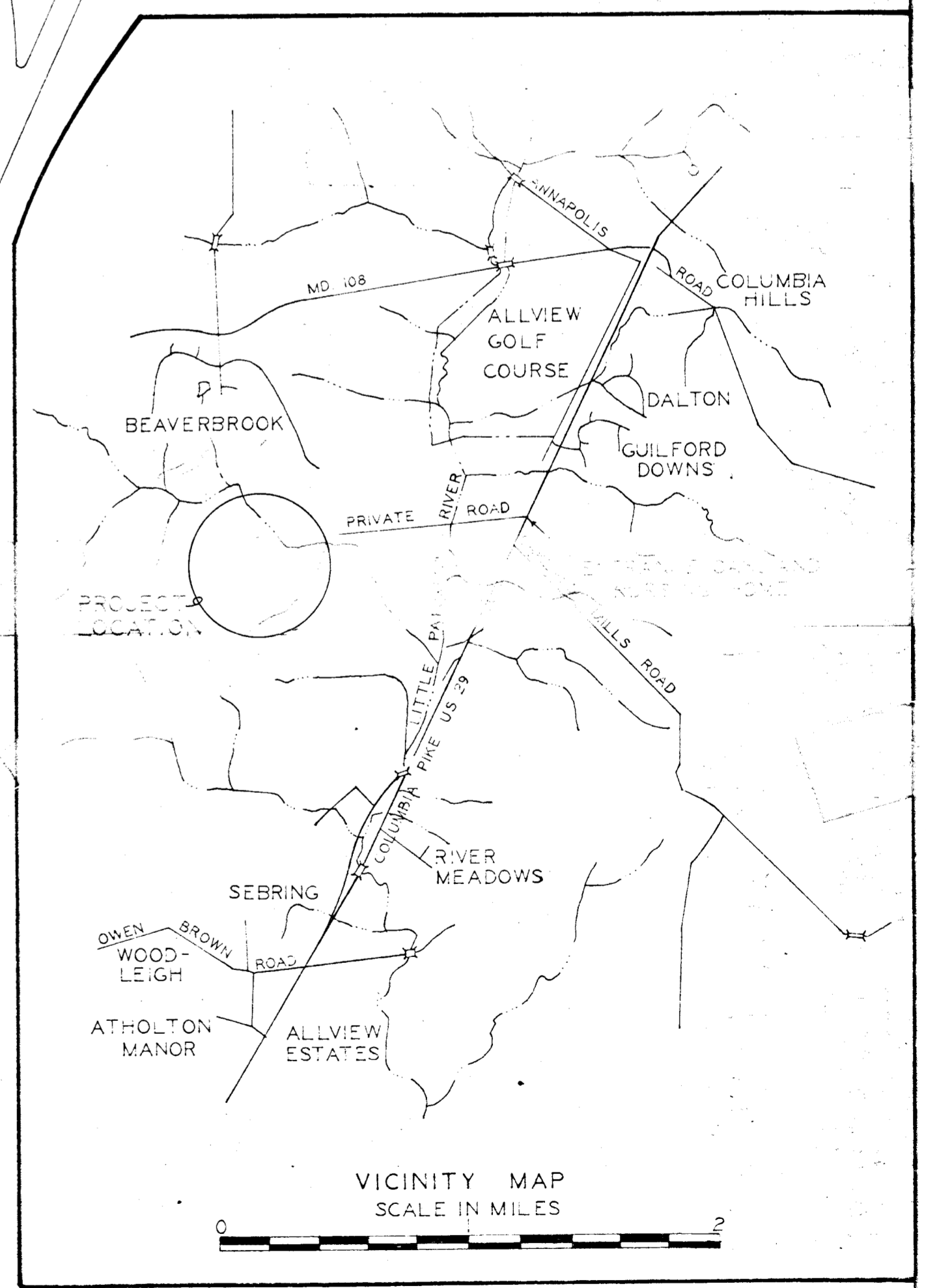
SEPTEMBER 1966

INDEX		
DESCRIPTION	STREET NAME	DRAWING
TITLE SHEET		1
TYPICAL CROSS SECTIONS		2
PLAN & PROFILE	TWIN RIVERS ROAD	3
PLAN & PROFILE	MINIBUS ROUTE	4
PLAN & PROFILE	LYNX LANE	5
PLAN & PROFILE	CROSS FOX LANE	6
DRAINAGE DETAILS		7
" " "		8

LEGEND
 ——— SIDEWALKS
 - - - - PATHWAYS (BY OTHERS)



APPROVED
 PLANNING COMMISSION
 OF HOWARD COUNTY
 DATE APR 21 1967
[Signature]



APPROVED BY
 HOWARD COUNTY PLANNING COMMISSION *J. H. Clawson* 4-21-67
 HOWARD COUNTY ROAD DEPARTMENT *Hermon S. Neill* 4-20-67
 HOWARD COUNTY METROPOLITAN COMMISSION *W. C. [Signature]* 3-17-67

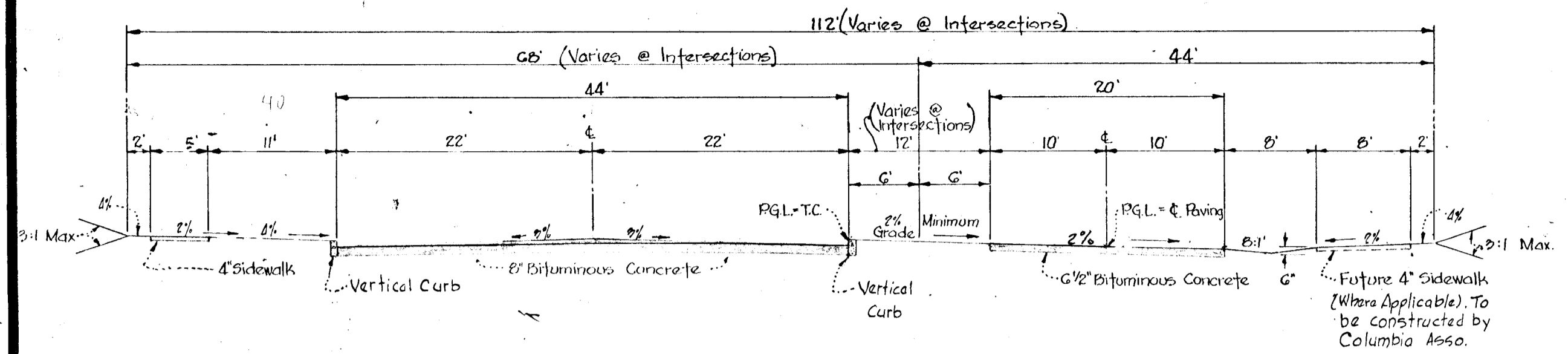
C.D. MESSICK JR. & ASSOCIATES, INC.
 CONSULTING ENGINEERS & LAND SURVEYORS
 21 WEST STREET ANNAPOLIS, MARYLAND
C.D. Messick Jr. 12-16-66
 PE 3390



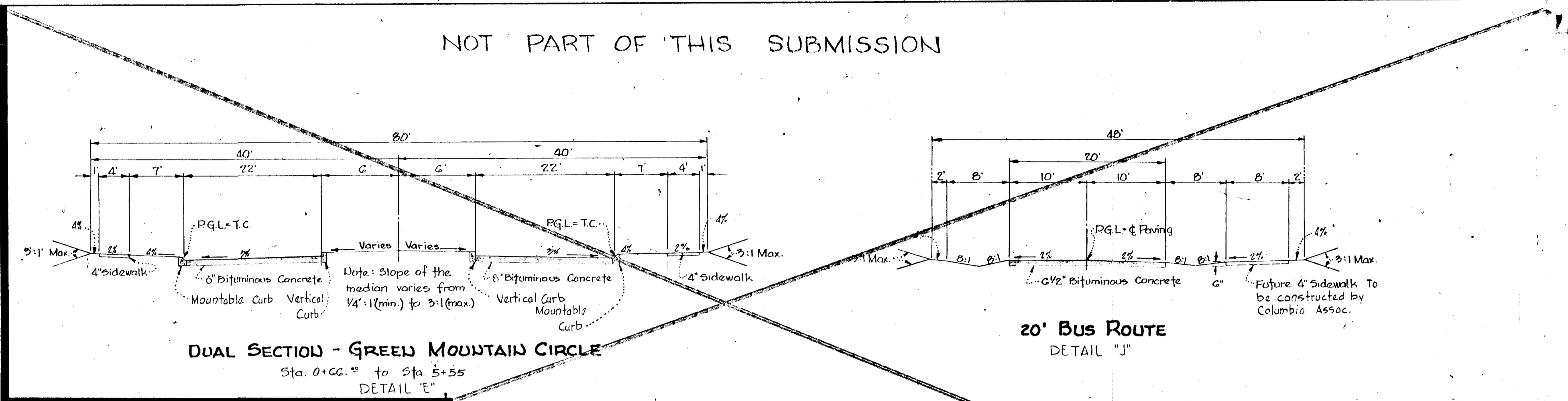
KEY MAP
 SCALE: 1" = 400'

HOWARD RESEARCH & DEVELOPMENT CORP.
 VILLAGE OF CROSS KEYS BALTIMORE, MARYLAND 21210

NOT PART OF THIS SUBMISSION

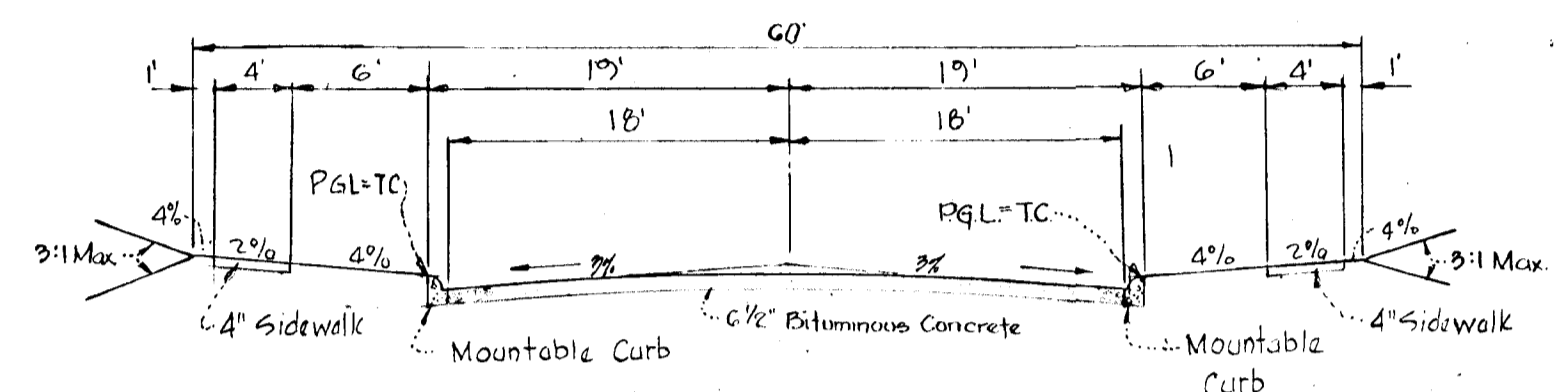


COMBINATION 44' ROAD & 20' BUS ROUTE IN 112' RIGHT-OF-WAY
DETAIL "A"

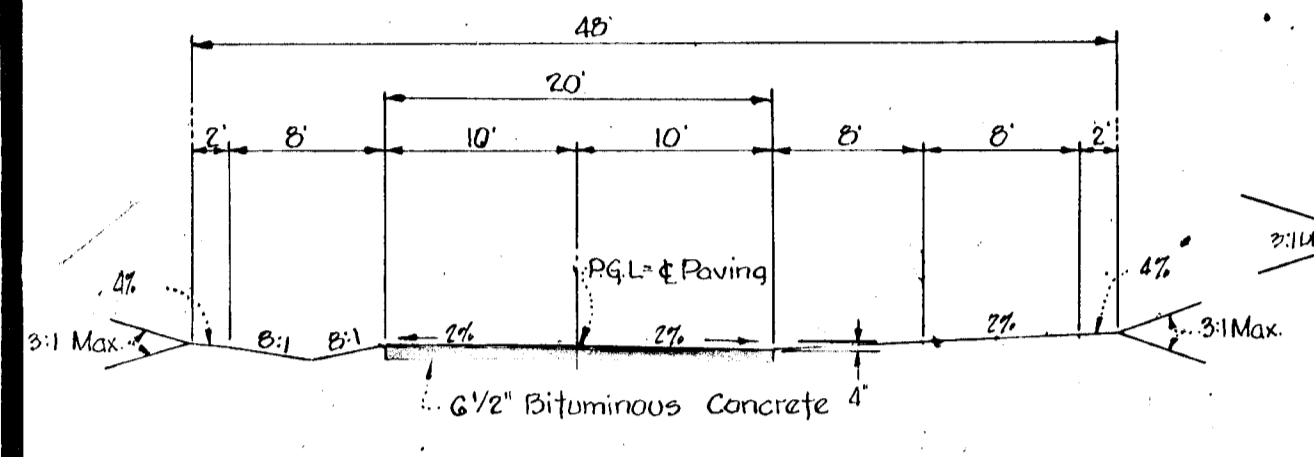


DUAL SECTION - GREEN MOUNTAIN CIRCLE
Sta. 0+00.00 to Sta. 5+55
DETAIL "E"

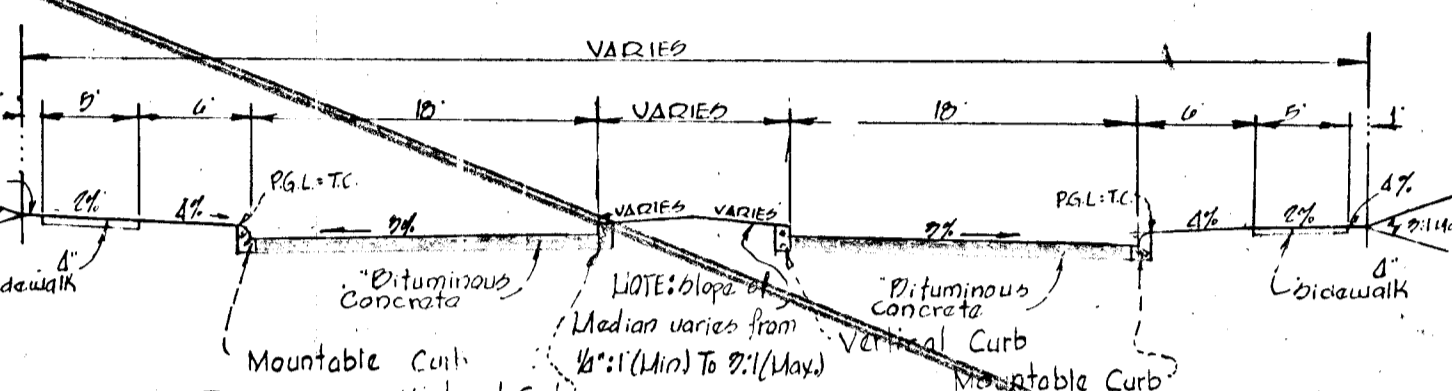
20' BUS ROUTE
DETAIL "J"



NEIGHBORHOOD STREET
& COLLECTOR
DETAIL "F"



20' BUS ROUTE WITHOUT DITCH
DETAIL "K"



DUAL SECTION & GREEN MOUNTAIN CIRCLE
Sta. 0+00.00 to Sta. 0+10.00
DETAIL "L"

NOTE FOR 8" PAVING
5" BITUMINOUS CONCRETE BASE COURSE
1 1/2" BITUMINOUS CONCRETE BINDER COURSE
1 1/2" BITUMINOUS CONCRETE SURFACE COURSE
This surface type to be constructed in accordance with the HOWARD COUNTY ROAD CONSTRUCTION CODE and SPECIFICATIONS. DWG D113 Page 165C

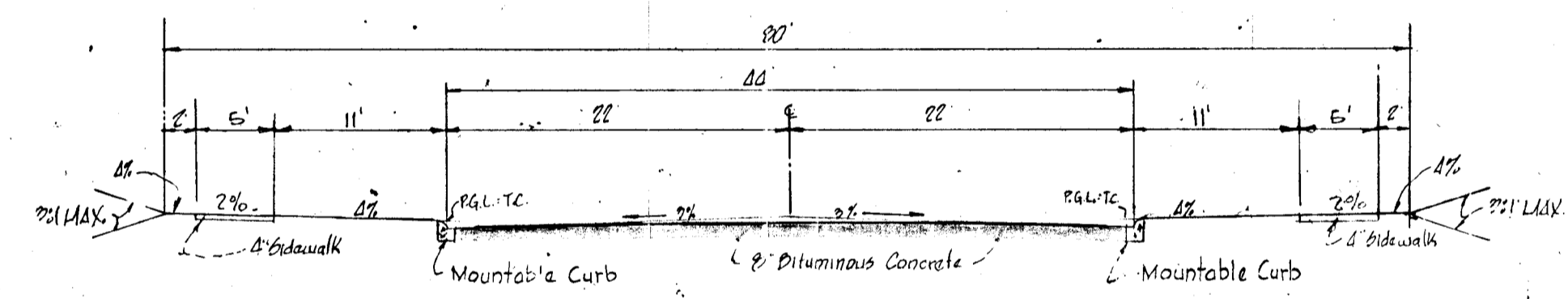
NOTE FOR 6 1/2" PAVING
5" BITUMINOUS CONCRETE BASE COURSE
1 1/2" BITUMINOUS CONCRETE SURFACE COURSE
This surface type to be constructed in accordance with the HOWARD COUNTY ROAD CONSTRUCTION CODE and SPECIFICATIONS. DWG D114 Page 165D

VARIES
ALL SIDEWALKS 4' WIDE UNLESS OTHERWISE NOTED ON THE PLANS

CLASS A CONCRETE
Howard Research & Development will construct standard Howard Co. Portland Cement Concrete sidewalk or an alternate Design Approved by Howard County Roads Department.

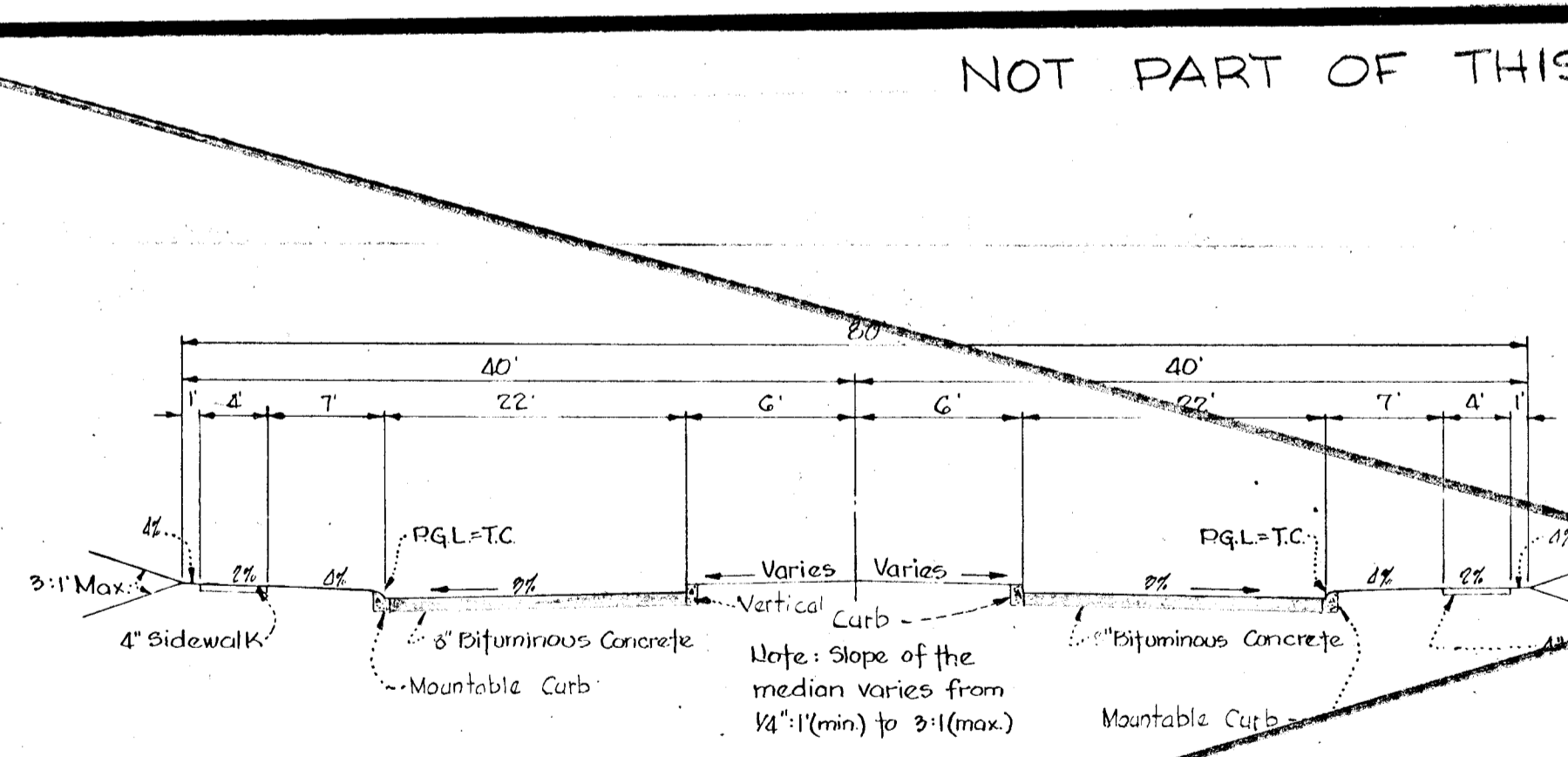
SIDEWALK
NO SCALE

INCLUDED IN THIS CONTRACT

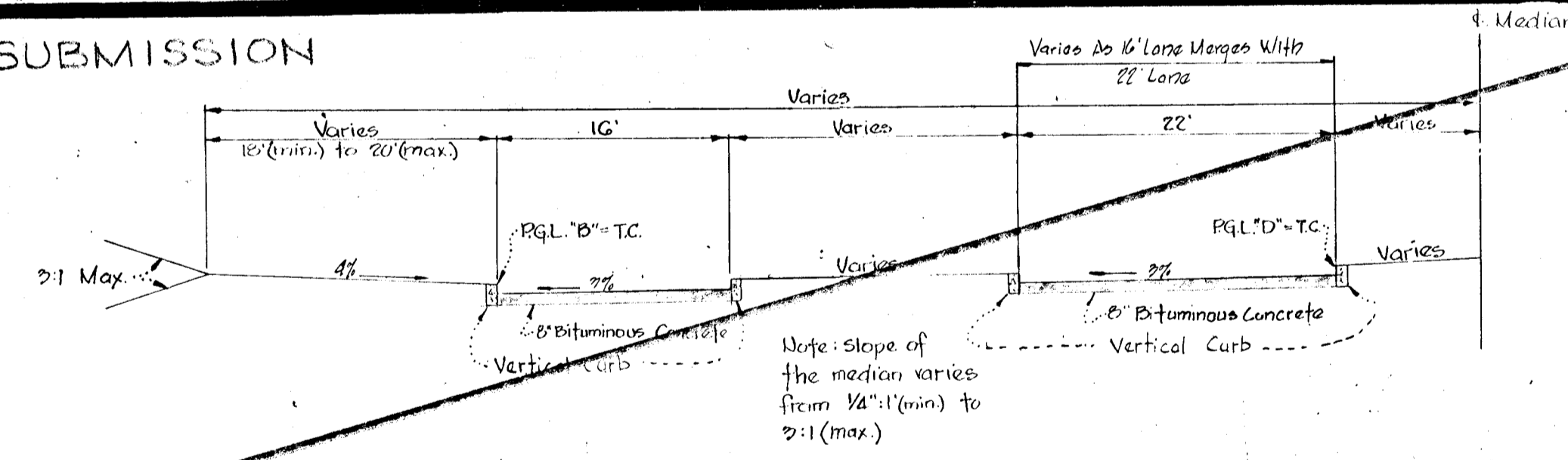


44' ROAD SECTION
Scale: 1" = 10'
DETAIL "L"

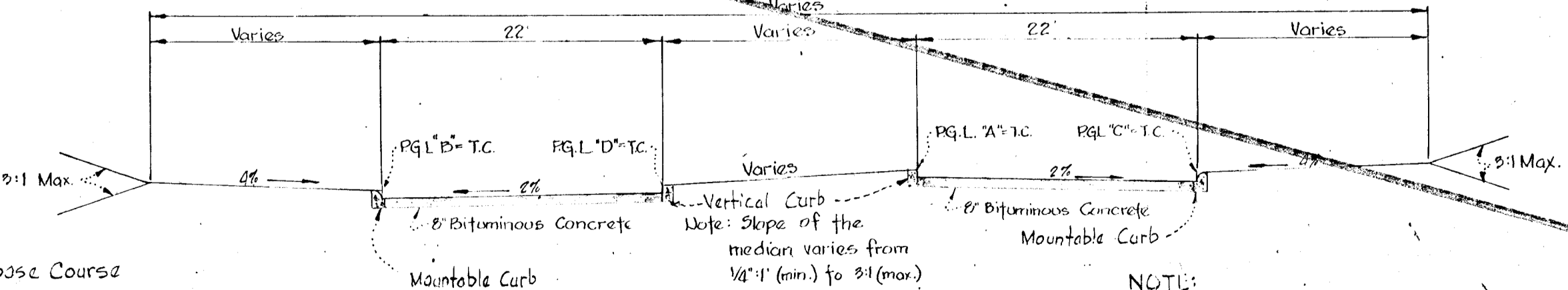
NOT PART OF THIS SUBMISSION



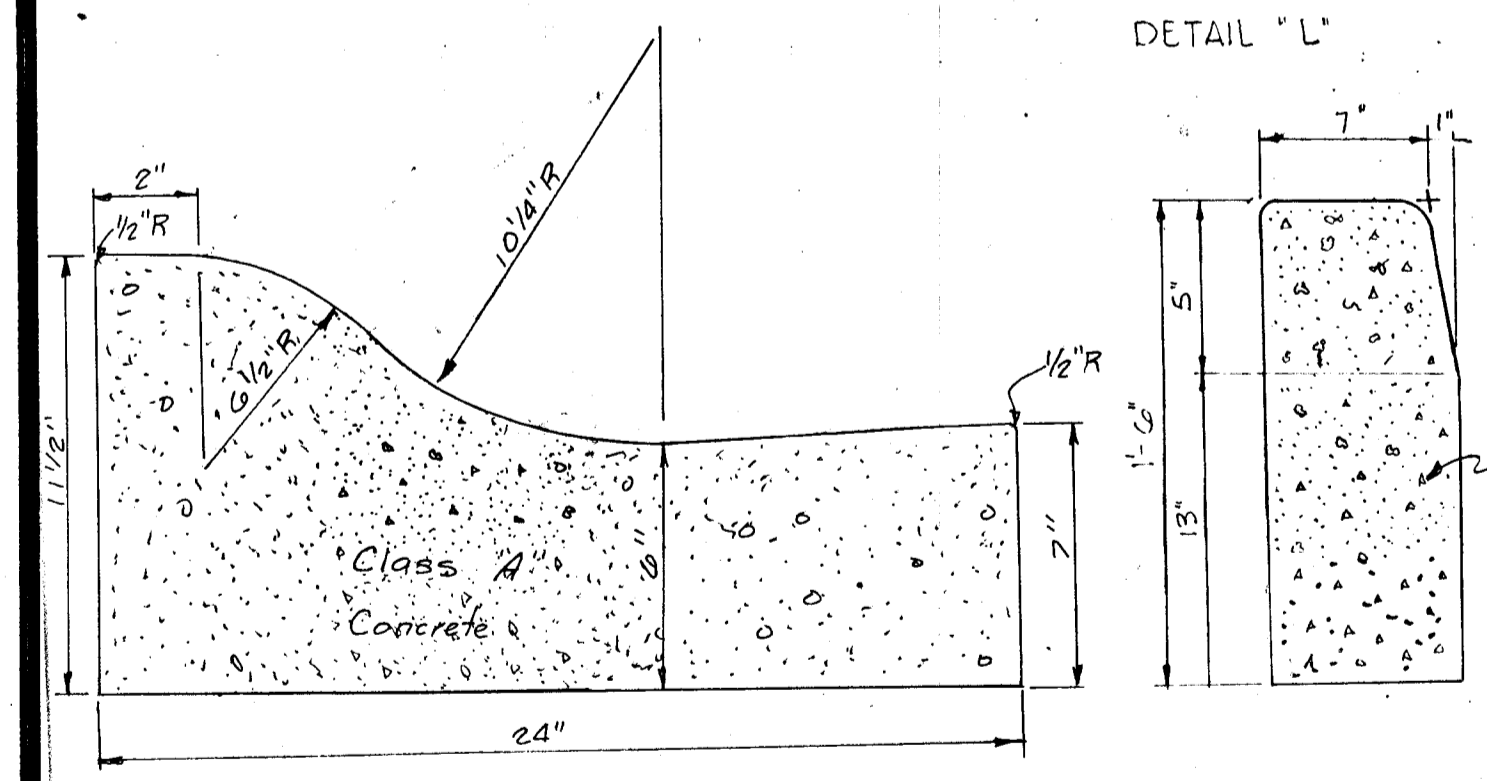
DUAL SECTION - GREEN MOUNTAIN CIRCLE
Sta. G2+45.00 to Sta. G2+19.00
DETAIL "D"



TYPICAL HALF SECTION
TWIN RIVERS ROAD
DETAIL "H"



TYPICAL ROAD SECTION
DETAIL "I"



MOUNTABLE CURB
DETAIL "M"

VERTICAL CURB
DETAIL "N"

APPROVED
PLANNING COMMISSION
OF HOWARD COUNTY
DATE APR 21 1967

C. D. MESSICK JR. & ASSOCIATES, INC.
CONSULTING ENGINEERS & LAND SURVEYORS
21 WEST STREET ANNAPOLIS, MARYLAND
C.D. Messick Jr. 5/23/66
C.D. MESSICK JR. P.E. NO. 3390 DATE

NOTE:
5" Bituminous Concrete Base Course
1 1/2" Bituminous Concrete Binder Course
1 1/2" Bituminous Concrete Surface Course
This surface type to be constructed in accordance with the HOWARD COUNTY ROAD CONSTRUCTION CODE and SPECIFICATIONS. DWG. D113 Page 165C

NOTE:
5" Bituminous Concrete Base Course
1 1/2" Bituminous Concrete Surface Course
This surface type to be constructed in accordance with the HOWARD COUNTY ROAD CONSTRUCTION CODE and SPECIFICATIONS. DWG. D114 Page 165D.

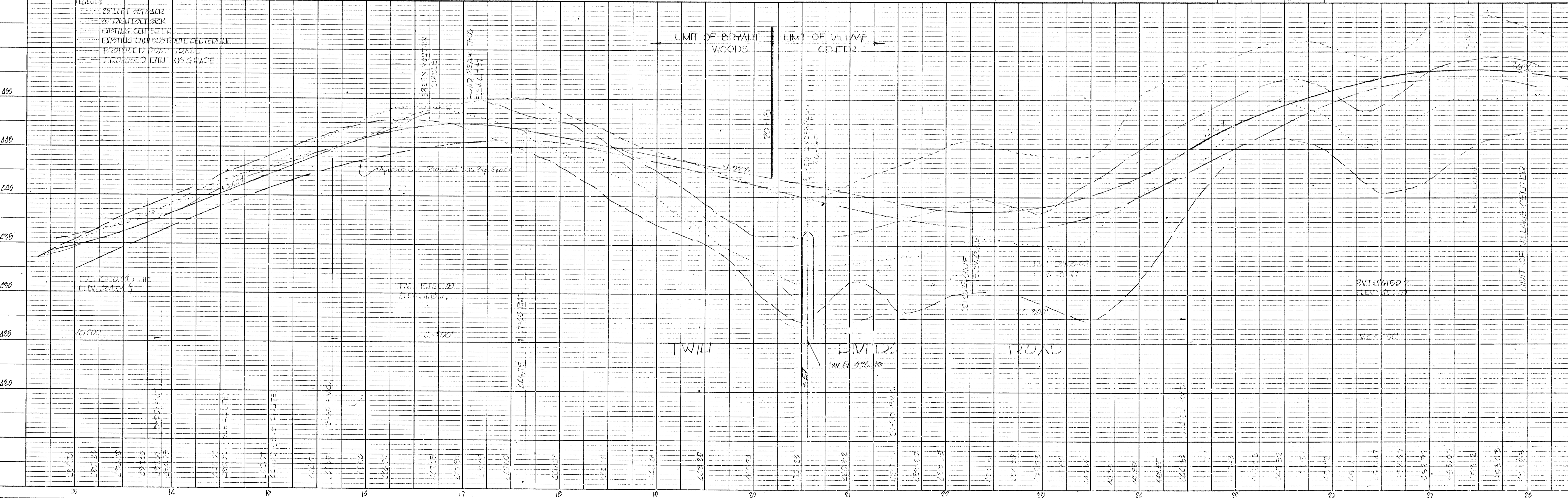
TYPICAL SECTIONS
VILLAGE CENTER
COLUMBIA

SCALE: AS SHOWN	DATE: 5-24-66
DESIGNED BY: JAS	TRACED BY: ARS
CHECKED BY: REL	DRAWING NO: 2 of 3

PLAN	BY	DATE
DESIGNED		
CHECKED		
NOTED		
NO.		

PROFILE	BY	DATE
DESIGNED		
CHECKED		
NOTED		
NO.		

C.D. MESSICK JR. & ASSOCIATES, INC.
 CONSULTING ENGINEERS & LAND SURVEYORS
 21 WEST STREET ANNAPOLIS, MARYLAND



Note: Area indicated as future roadway is to be in accordance with the site plan as approved on Nov. 11, 1966 by H.C.P.C.

APPROVED
 PLANNING COMMISSION
 OF HOWARD COUNTY
 DATE APR 21 1967

GENERAL REVISIONS	N.T.	2/21/67
REVISIONS		
DESCRIPTION	BY	MARK
SECTION 4		
TWIN RIVERS ROAD		
STA. 13+00 TO STA. 28+00		
BRYANT WOODS & VILLAGE CENTER		
COLUMBIA		
ROAD PLAN		
SCALE: AS SHOWN	DATE: 3-24-66	
DESIGN BY: JAS. JCS	TRACED BY: J.B.G.	
CHECKED BY: J.E.L.	DRAWING NO.: 3048	

PLAN
 SURVEYED BY: _____
 DATED: _____
 NOTE BOOK GRACES CHECKED BY: _____
 NO. _____

PROFILE
 SURVEYED BY: _____
 DATED: _____
 NOTE BOOK GRACES CHECKED BY: _____
 NO. _____

C.D. MESSICK JR. & ASSOCIATES, INC.
 CONSULTING ENGINEERS & LAND SURVEYORS
 21 WEST STREET ANNAPOLIS, MARYLAND
 DATE: 5-23-66
 C.D. MESSICK JR. P.E. NO. 3390

SCALE: PLAN: 1"=50'
 HOR. 1"=50'
 PROFILE: VERT. 1"=5'

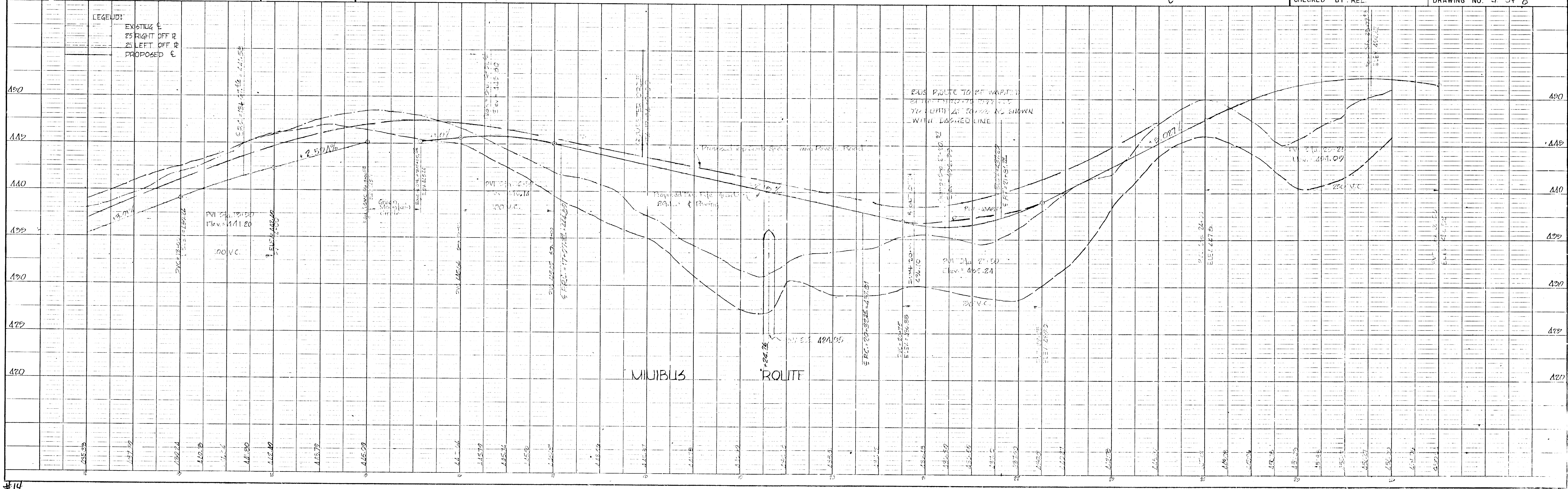
APPROVED
 PLANNING COMMISSION
 ON BEHALF OF COUNTY
 DATE: 5-23-66
J. J. Ch...

GENERAL STORM DRAIN REVISIONS			
REVISION	DESCRIPTION	BY	DATE
1	AS SHOWN	J.A.S.	5-23-66

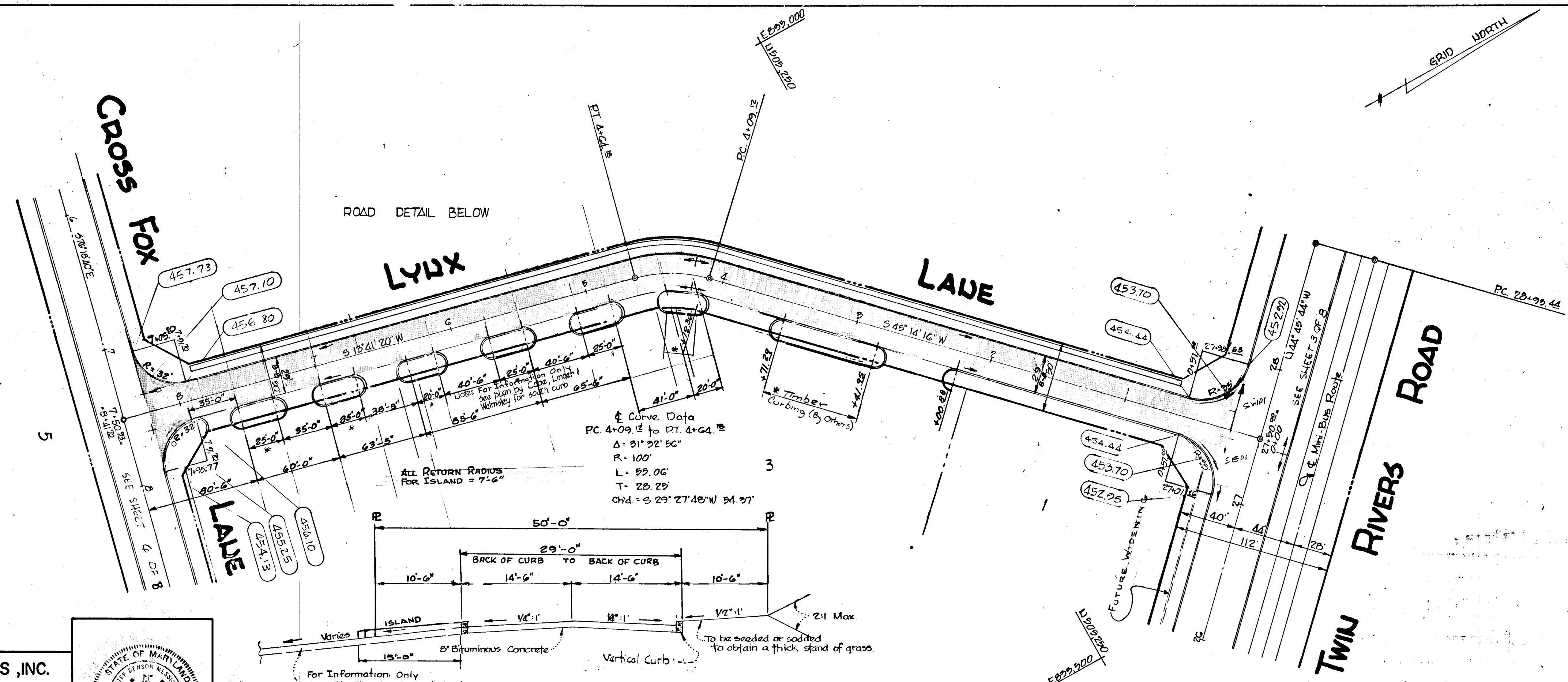
REVISIONS SECTION 4			
NO.	DESCRIPTION	BY	DATE
1	MINIBUS ROUTE STA. 12+00 TO STA. 26+00 BRYANT WOODS VILLAGE CENTER COLUMBIA	J.A.S.	5-23-66

MINIBUS ROUTE
 STA. 12+00 TO STA. 26+00
 BRYANT WOODS VILLAGE CENTER
 COLUMBIA
 ROAD PLAN

SCALE: AS SHOWN
 DATE: 5-23-66
 DESIGN BY: J.A.S. J.C.S.
 CHECKED BY: REL.
 TRACED BY: J.B.G.
 DRAWING NO. 4 OF 8



PLAN
 DATE: _____
 BY: _____
 NO. _____
 NOTE BOOK: _____
 CHECKED: _____
 DATE: _____



APPROVED
 PLANNING COMMISSION
 OF HOWARD COUNTY
 DATE: APR 21 1967

DESCRIPTION	BY	MARK	DATE
ADD LYNX LANE PAVEMENT WIDTH	N.J.L.		2/16/67
REVISED PROFILE GRADE	N.J.L.		12-1-66
REVISED SHEET NUMBER	A.R.S.		6-20-66
REVISED PROFILE GRADE	A.R.S.		6-1-66

REVISIONS

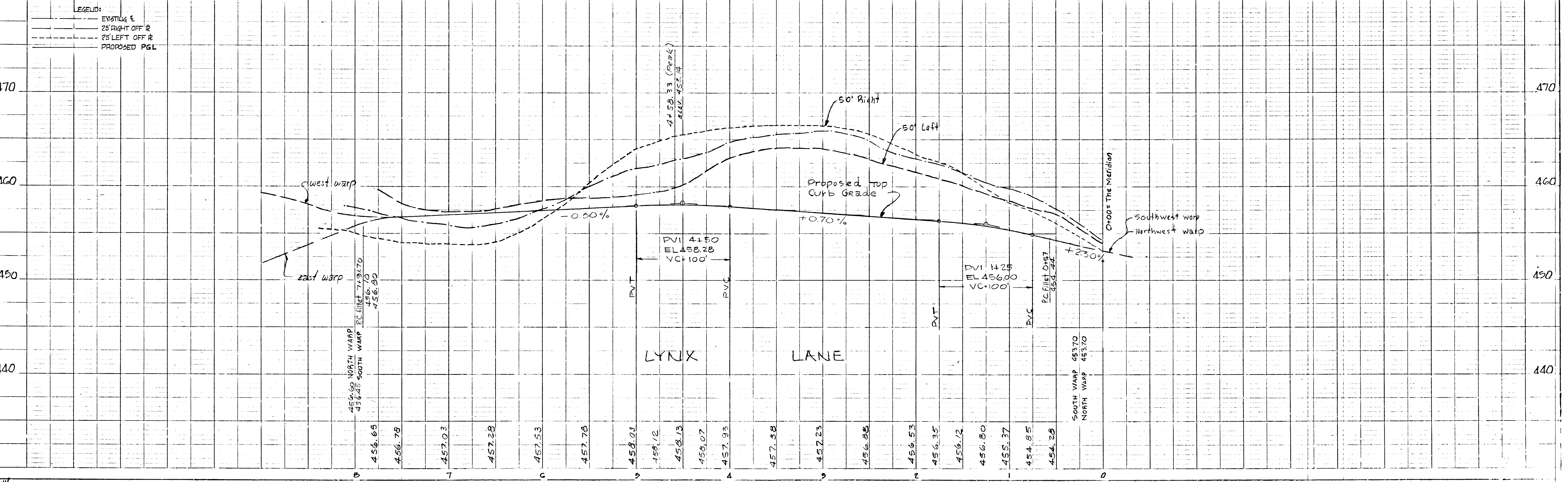
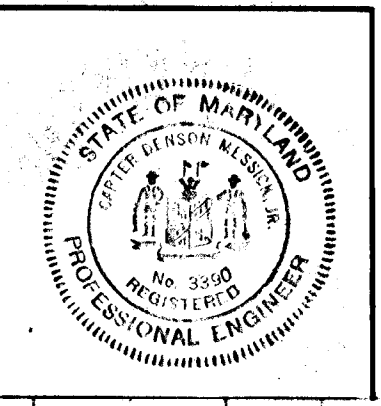
LYNX LANE
 SECTION 4
 VILLAGE CENTER
COLUMBIA
 ROAD PLAN

SCALE: AS SHOWN	DATE: 5-24-66
DESIGN BY: J.C.S.	TRACED BY: A.R.S.
CHECKED BY: REL.	DRAWING NO. 5 OF 8

C.D. MESSICK JR. & ASSOCIATES, INC.
 CONSULTING ENGINEERS & LAND SURVEYORS
 21 WEST STREET ANNAPOLIS, MARYLAND

C.D. Messick Jr.
 C.D. MESSICK JR. P.E. NO. 3390

Stoyle
 DATE



PROFILE
 DATE: _____
 BY: _____
 NO. _____
 NOTE BOOK: _____
 CHECKED: _____
 DATE: _____

NOTE: For typical section see detail "F" on the TYPICAL SECTION sheet 2 of 8

NOTE: For Grades in this area see site plan by Coppy, Linder and Welmsley. (For Information Only)

TWIN RIVERS ROAD
PT. 40+27.33

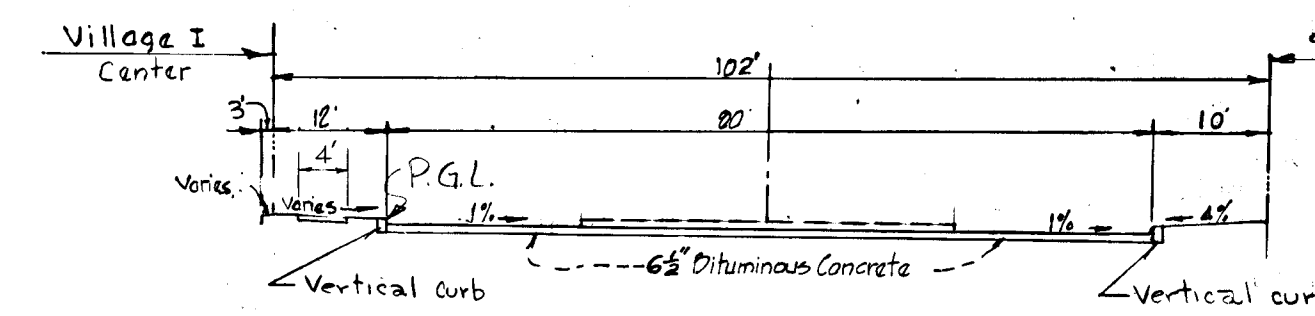
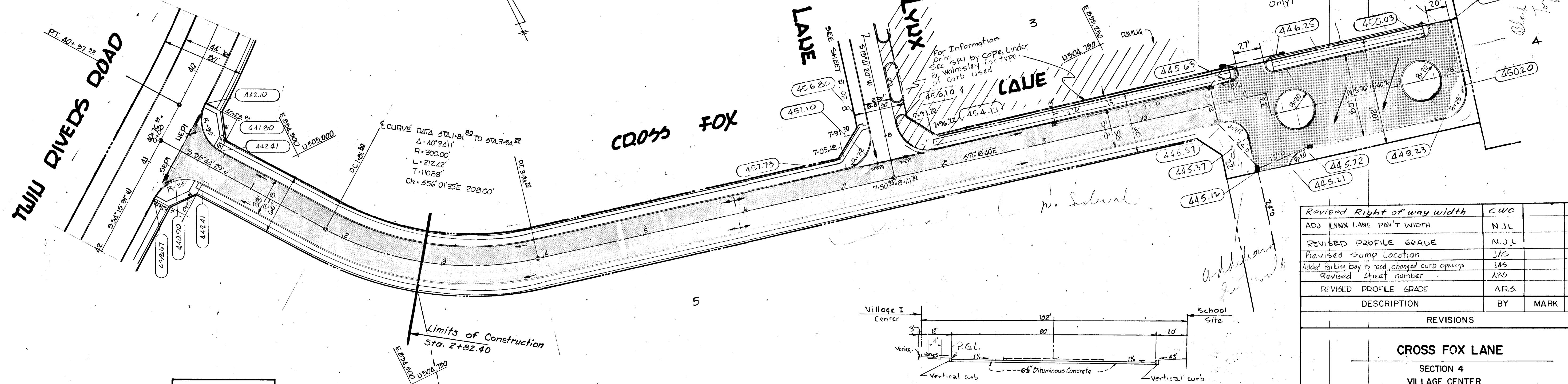
CROSS FOX

LADE

LADE

PLAN
SURVEYED BY: []
CHECKED BY: []
DATE: []
NOTE: BOOK, ADDRESS, CHECKED, RT. OF WAY CHECKED, NO.

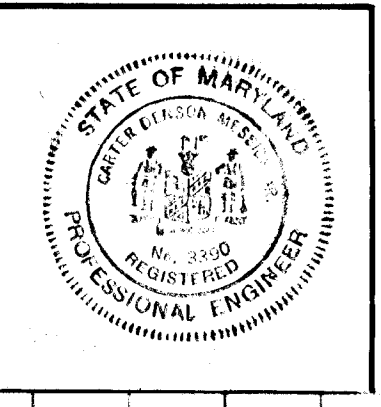
PROFILE
SURVEYED BY: []
CHECKED BY: []
DATE: []
NOTE: BOOK, ADDRESS, CHECKED, RT. OF WAY CHECKED, NO.



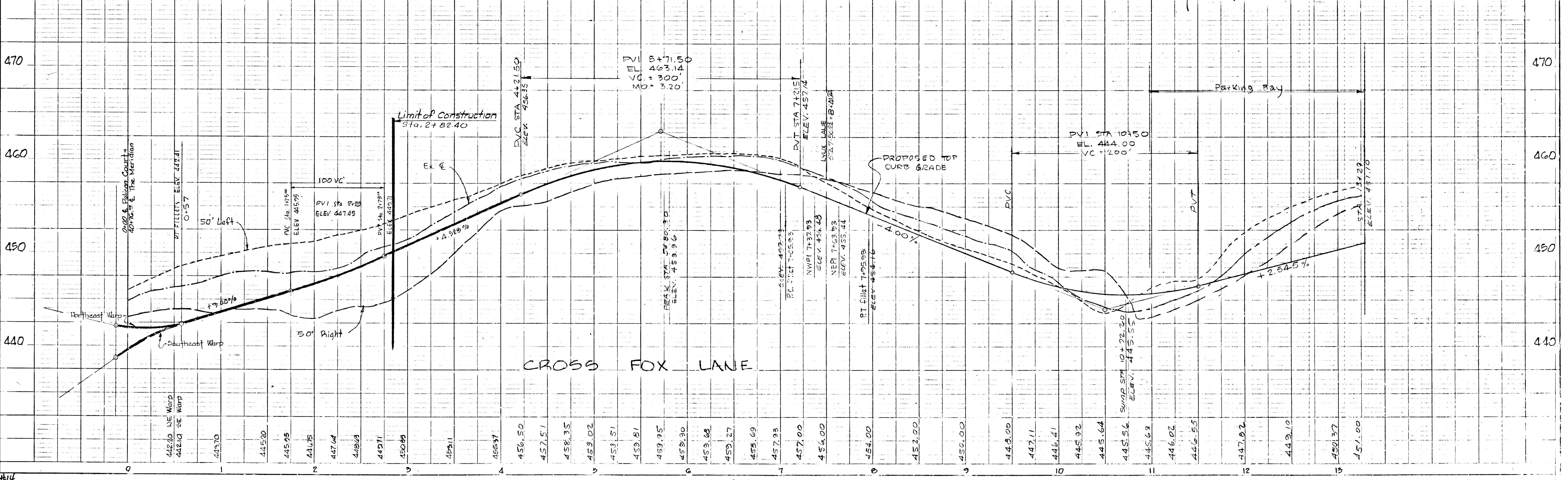
DESCRIPTION	BY	MARK	DATE
Revised Right of way width	CWC		2/28/67
ADD LINK LANE PAV'T WIDTH	N.J.L		2/6/67
REVISIED PROFILE GRADE	N.J.L		12-1-66
Revised Sump Location	JAS		7-25-66
Add Parking Bay to road, changed curb openings	JAS		7-1-66
Revised Sheet number	ARS		6-20-66
REVISIED PROFILE GRADE	ARS		6-1-66

REVISIONS			
CROSS FOX LANE			
SECTION 4			
VILLAGE CENTER			
COLUMBIA			
ROAD PLAN			
SCALE AS SHOWN	DATE: 5-24-66	DESIGN BY: J.A.S. J.C.S.	TRACED BY: ARS. & W.H.D.
CHECKED BY: REL.			DRAWING NO. 6 OF 8

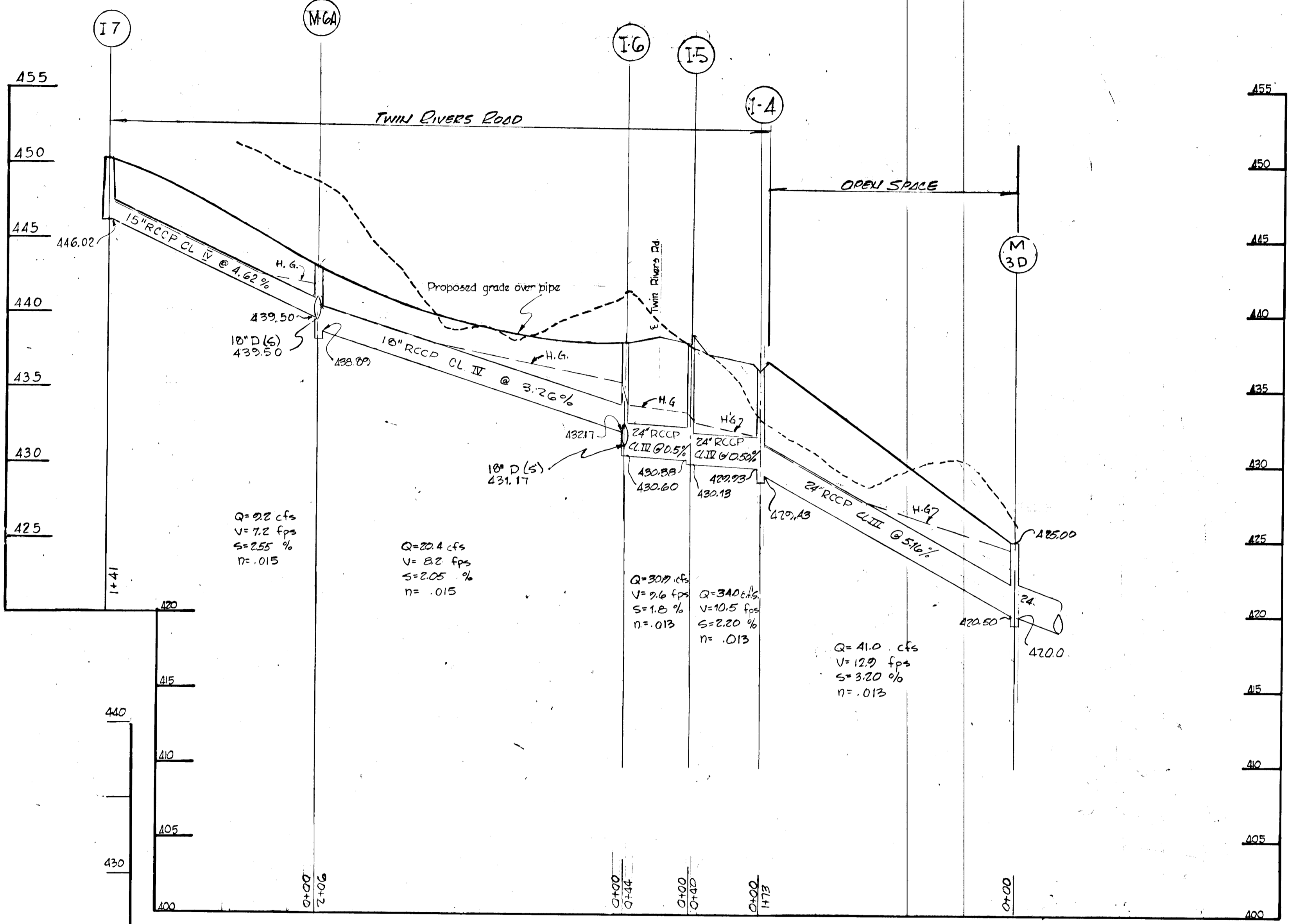
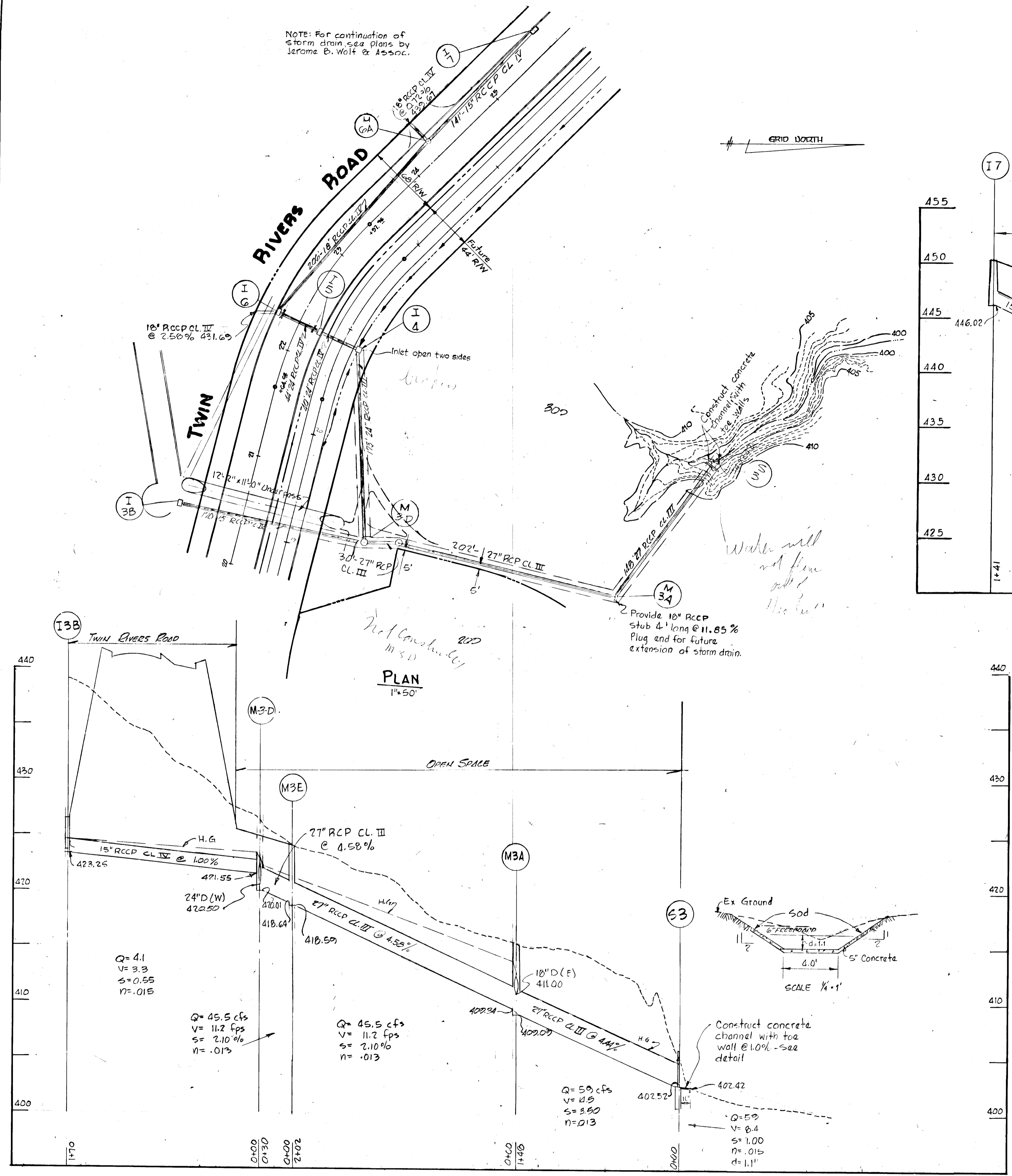
C.D. MESSICK JR. & ASSOCIATES, INC.
CONSULTING ENGINEERS & LAND SURVEYORS
21 WEST STREET ANNAPOLIS, MARYLAND
DATE: 5/23/66
C.D. MESSICK JR., P.E. NO. 3390



APPROVED
PLANNING COMMISSION
OF HOWARD COUNTY
DATE: []



NOTE: For continuation of Storm drain see plans by Jerome B. Wolf & Assoc.



STORM DRAIN STRUCTURE SCHEDULE							
NO.	TYPE	LOCATION	T.C. ELEV.	ILV. IN	ILV. OUT	REMARKS	
I-7	24" Comb. Dbl. Gate (Imp.)	INLET LT. STA 25+68.8	450.19	446.02	446.02	HO. CO. Road Code 76.157	
M-6A	Standard Manhole	SMH LT. STA 24+20	442.74	439.50	439.50	" " " 150	
I-6	Mod. 2' Cor. Single Gate (Imp.)	INLET RT. STA 22+26.60	438.62	438.17	438.60	See Detail Sheet 6 of 5	
I-5	" " " (Und.)	INLET RT. STA 22+26.60	438.62	430.35	434.43	" " " " "	
I-4	" TYPE 3" Modified	INLET RT. STA 22+26.60	436.39	429.93	429.43	HO. CO. Road Code PG 146	
M-3E	Standard Manhole	See Plan	Set in field	418.64	418.64	" " " 150	
I-3	STD. INR. 10" ENDWALL	See Plan	Top=466.77		402.52	" " " 107	
M-3A	Standard Manhole	See Plan	Set in field	409.34	409.09	" " " 150	
M-3D	Standard Manhole	M.H. @ 1/2' RT. STA 20+47	425.0	421.55	420.01	" " " 131	
I-3B	Std. Class "H" Inlet	INLET 60' LT. STA 20+42	426.50		425.25	" " " 131	

APPROVED
PLANNING COMMISSION
OF HOWARD COUNTY
DATE: 10-2-67

DESCRIPTION	BY	MARK	DATE
GENERAL STORM DRAIN REVISIONS	N.L.		2-3-67
GENERAL STORM DRAIN REVISIONS	JAS		10-17-66
Revised Storm Drain Comp.	M.W.		9-27-66
Revised Storm drain layout	JAS		9-27-66

VILLAGE OF WILDE LAKE
SECT 4
VILLAGE CENTER
COLUMBIA
SYSTEM "B"
STORM DRAIN

SCALE: AS SHOWN	DATE:
DESIGNED BY: JAS	TRACED BY: JAS, WHD
CHECKED BY:	DRAWING NO. 7 OF 13

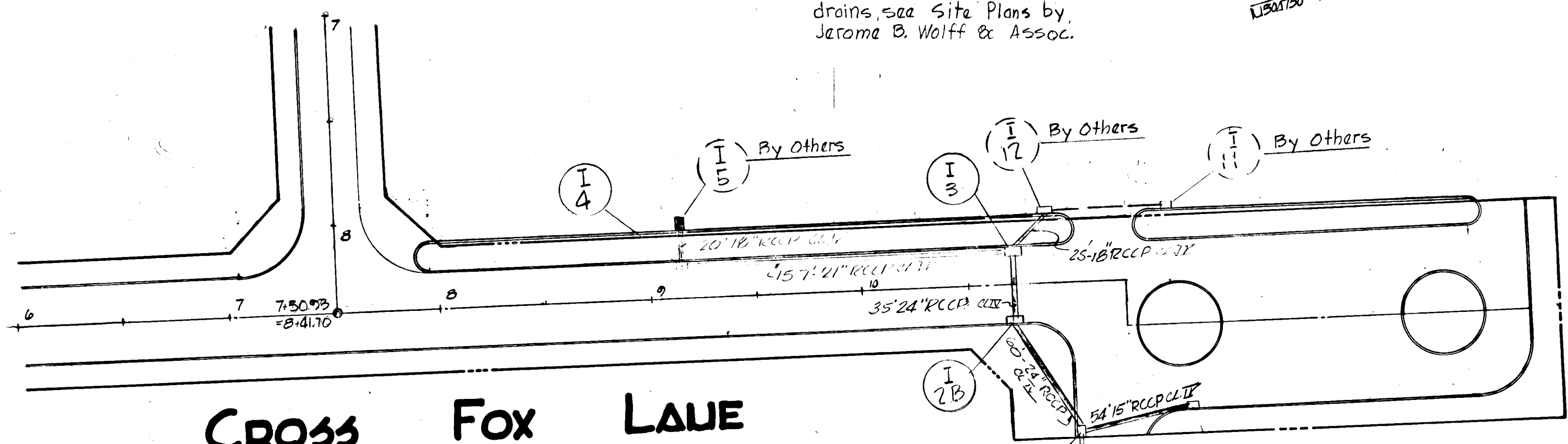
C.D. MESSICK JR. & ASSOCIATES, INC.
CONSULTING ENGINEERS & LAND SURVEYORS
21 WEST STREET ANNAPOLIS, MARYLAND
R.E. LOWMAN L.S. NO 3947
9-8-66
DATE



Revised Storm drain between 3D-3A
RT. 17 LOCATION, JAS M.W. 3-14-67 3-3-67

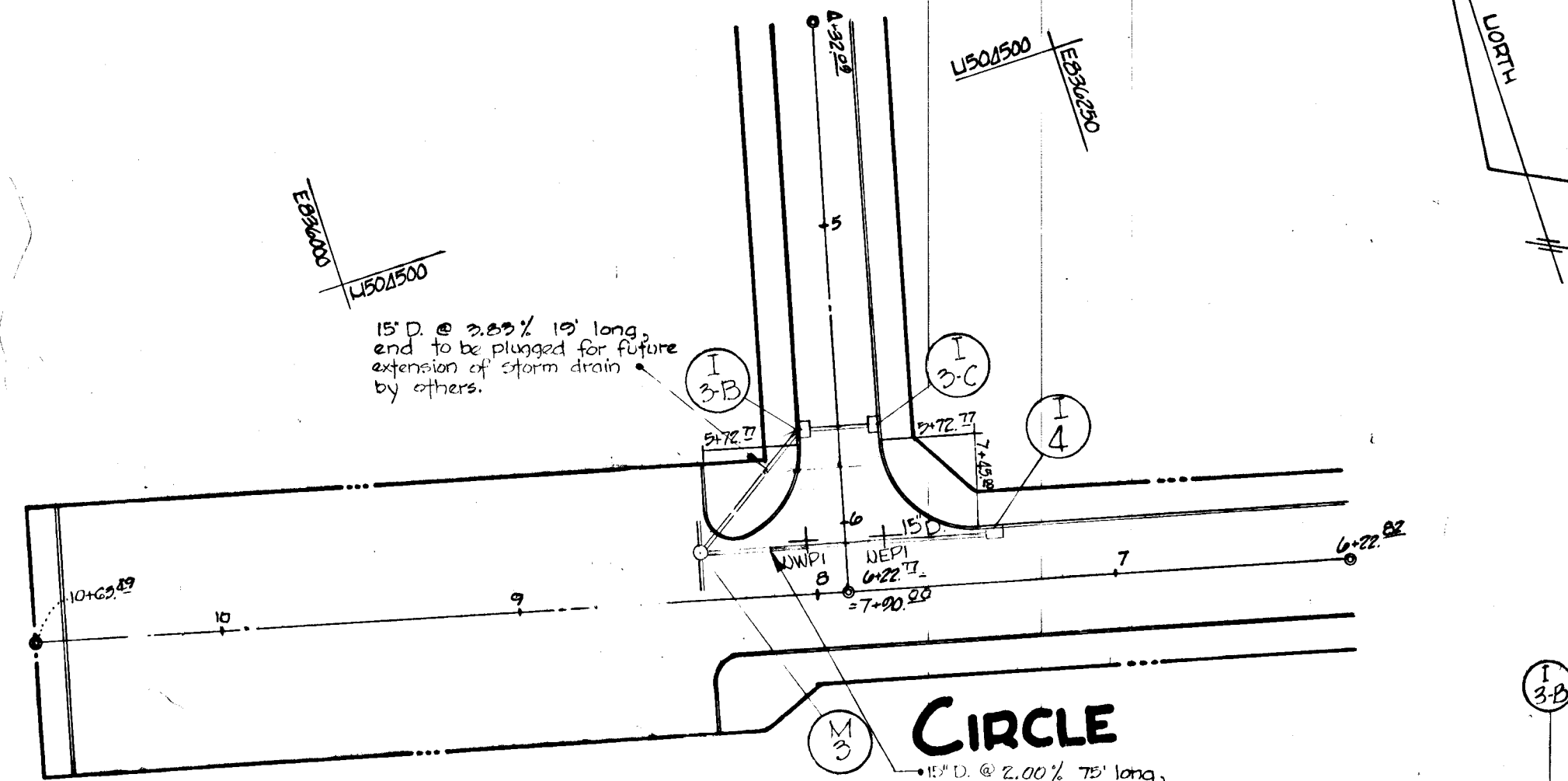
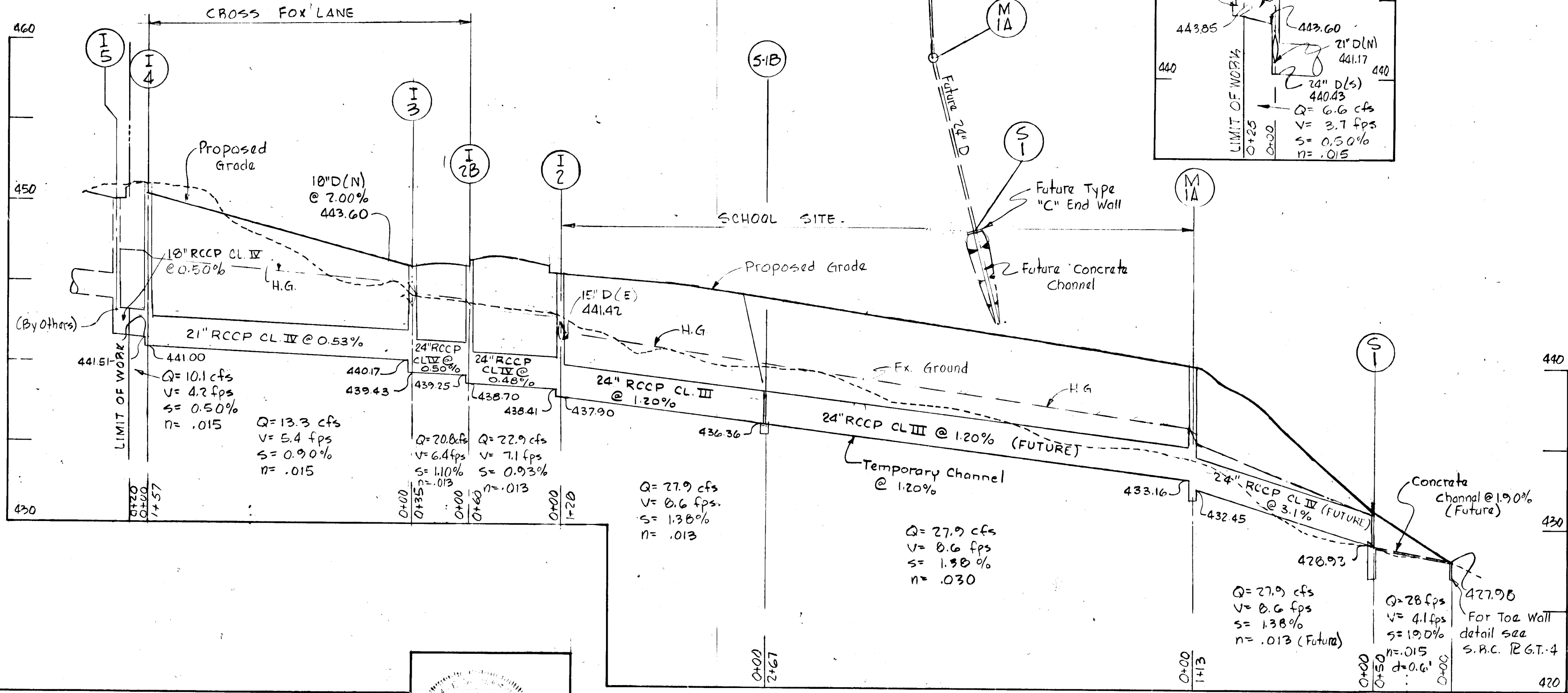
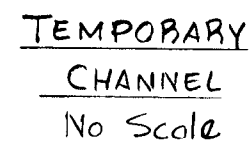
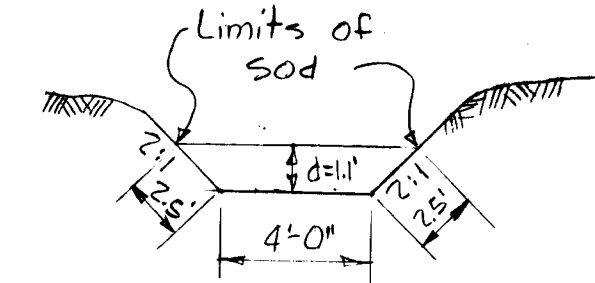
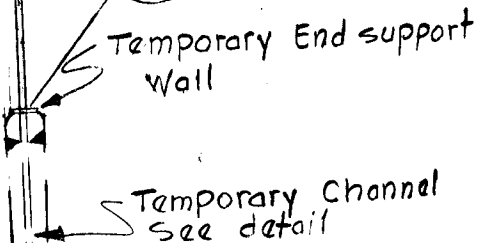
LYUX LAKE

NOTE:
For continuation of storm drains, see Site Plans by Jerome B. Wolff & Assoc.



CROSS FOX LAKE

NO.	TYPE	LOCATION	T.C. ELEV.	INV. IN	INV. OUT	REMARKS
I 4	"S" Comb. (Depn.)	Sta. 2+45 Lt.	445.40	442.51	442.51	No. Co. Road Code Pg. 154
I 3	"S" Comb. (Und.)	Sta. 10+72.2 Lt.	445.55	441.17	440.43	No. Co. Road Code Pg. 154
I 2B	"S" Comb. (Depn.)	Sta. 10+72.2 Rt.	445.55	440.75	439.70	No. Co. Road Code Pg. 154
I 2A	"E" Comb. (Gravty.)	Sta. 11+53 Rt.	445.83	441.96	441.96	No. Co. Road Code Pg. 154
I 2	"S" Comb. (Depn.)	Sta. 10+98 Rt.	445.12	439.41	438.90	No. Co. Road Code Pg. 154
M IA	Stand. Manhole (Fut.)	Sta. 10+98 Rt.		434.16	433.95	No. Co. Road Code Pg. 154
S 1	Stel-End Support Wall (Temp.)	See plan		426.93	426.93	No. Co. Road Code Pg. 154

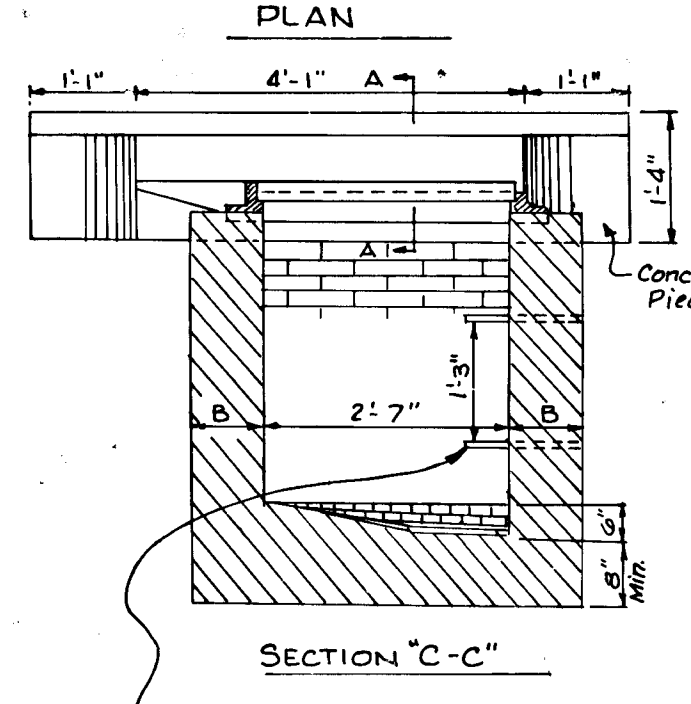
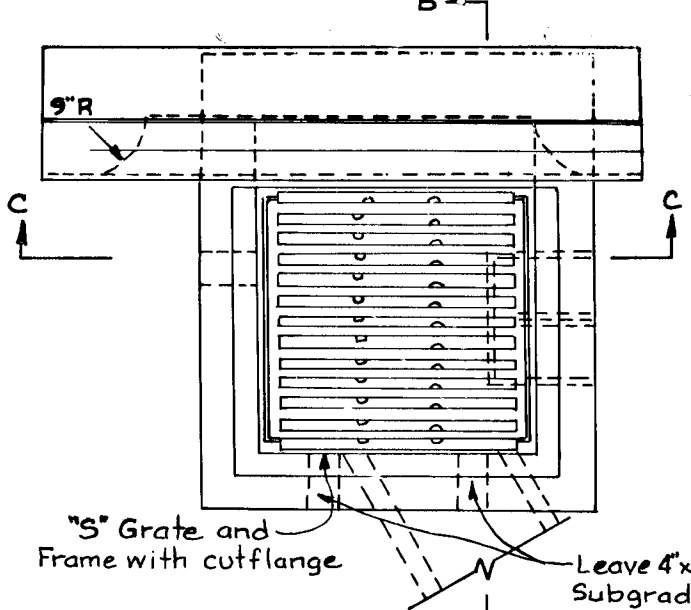
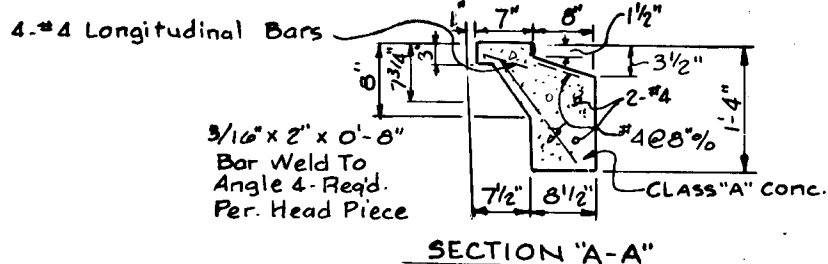
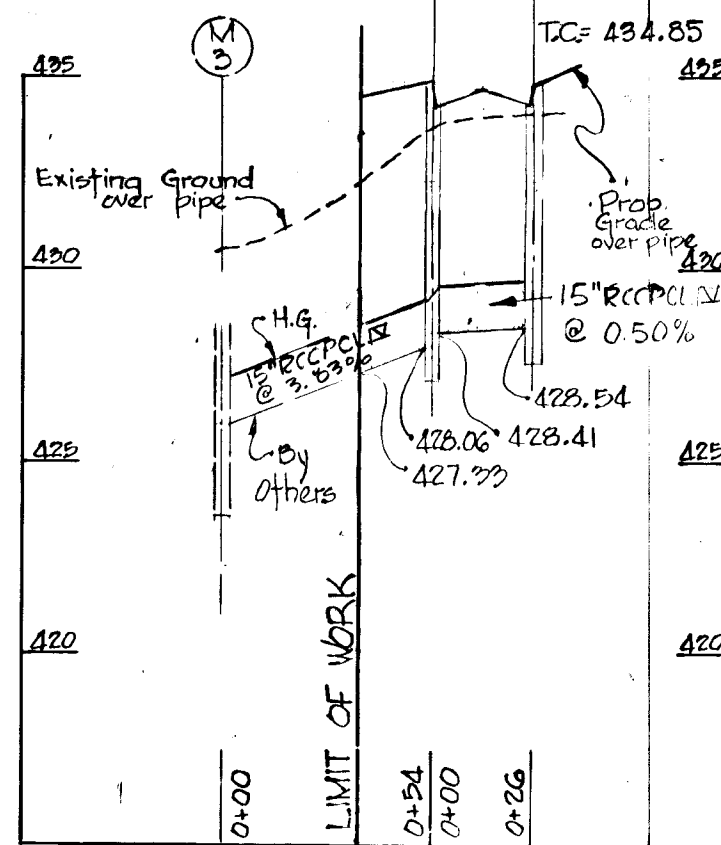


TRUMPETER

CIRCLE

NOTE:
Not included in this contract (for information only)

NO.	TYPE	LOCATION	T.C. ELEV.	INV. IN	INV. OUT	REMARKS



DETAIL MODIFIED
"S" COMBINATION INLET
(SINGLE GRATE)
NO SCALE

Standard Frame and Grate For Class "S" Inlet, see HOWARD COUNTY Standard Dwg. D100 Page 155.

- Notes:
- The Wall and Inlets shall be brick or plain Class "A" Concrete.
 - B₁ or B₂ Where A is 7' or less.
 - Top 4" of walls shall be brick masonry. Additional brick shall be used to bring the grate to exist grade if required.
 - Where brick is used, Invert shall be brick laid on edge.

APPROVED
PLANNING COMMISSION
OF HOWARD COUNTY
DATE: 12/10/66

DESCRIPTION	BY	MARK	DATE
LOWERED I 4 TO S1 SEWER PIPES	JM		4-5-67
GENERAL STORM DRAIN REVISIONS	DL		2-3-67
REVISED DRAINAGE - CROSS FOX LAKE	JM		10-1-66
REVISIONS			
VILLAGE OF WILDE LAKE			
SECTION 4 VILLAGE CENTER			
COLUMBIA SYSTEM "K&L" STORM DRAIN			
SCALE: AS SHOWN	DATE:		
DESIGNED BY: JAS	TRACED BY: W.H.D.		
CHECKED BY:	DRAWING NO.: 8 OF 8		

C.D. MESSICK, JR. & ASSOCIATES, INC.
CONSULTING ENGINEERS & LAND SURVEYORS
21 WEST STREET ANNAPOLIS, MARYLAND

Kevin E. Stewart 9-8-66
R. E. LOWMAN L.S. NO. 3947 DATE