

COLUMBIA

ELECTION DISTRICT 5

VILLAGE OF WILDE LAKE

THE BIRCHES

HOWARD COUNTY MARYLAND

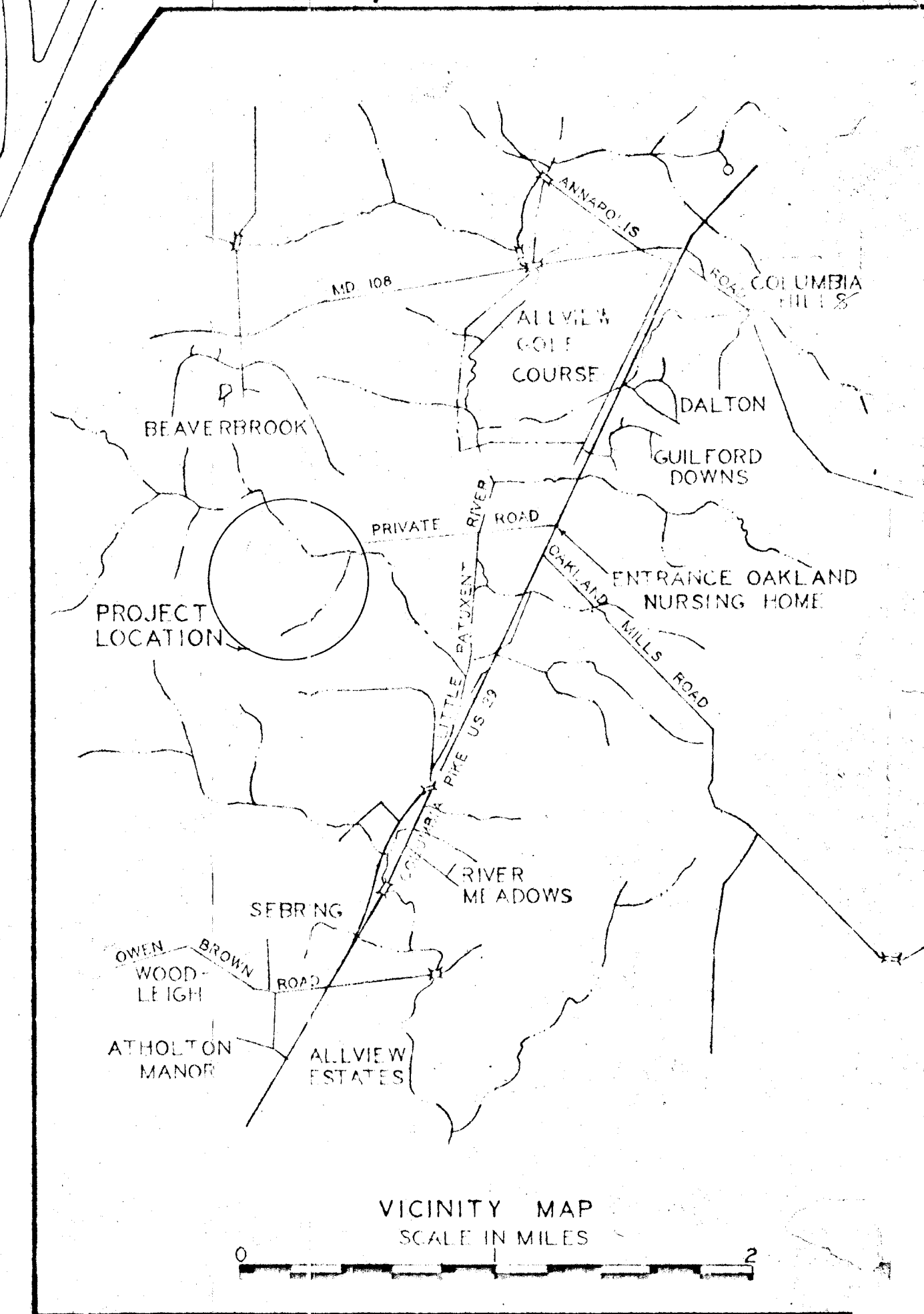
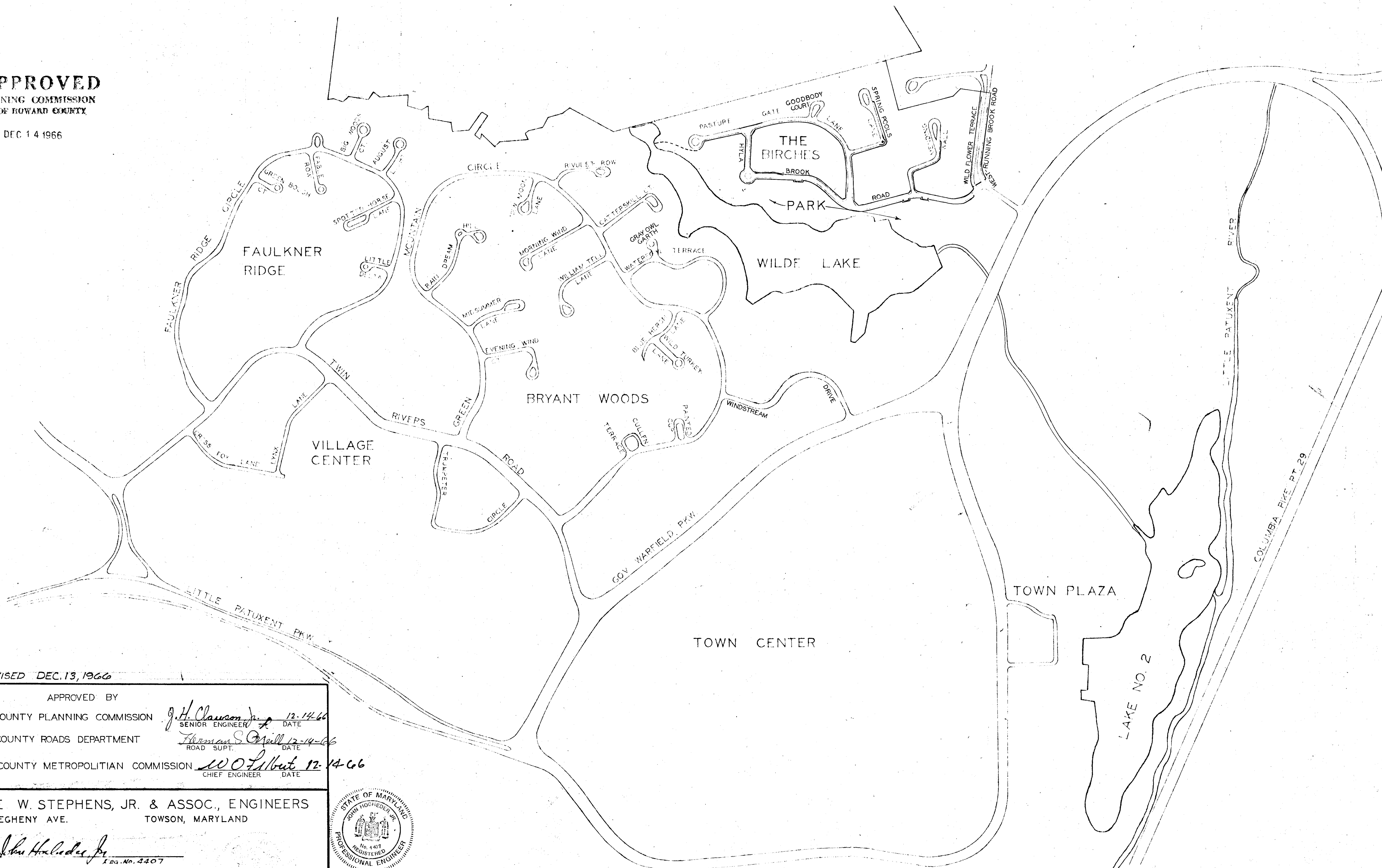
AUGUST 1966

INDEX		
DESCRIPTION	STREET NAME	DRAWING NO.
TITLE SHEET		1
PLAN & PROFILE	WILD FLOWER TERRACE	2
PLAN & PROFILE	HYLA BROOK ROAD	3 & 4
PLAN & PROFILE	SPRING POOLS LANE	5
PLAN & PROFILE	THE MENDING WALL	5
PLAN & PROFILE	PASTURE GATE LANE	6 & 7
DRAINAGE PLANS	DRAINAGE PROFILES	8
TYPICAL SECTION ROADS		2,4,7

LEGEND
 ———— SIDEWALKS
 - - - - - PATHWAYS (BY OTHERS)

APPROVED
 PLANNING COMMISSION
 OF HOWARD COUNTY

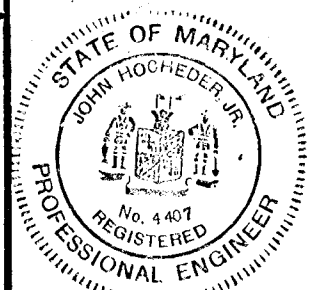
DEC 14 1966



PLANS REVISED DEC. 13, 1966

APPROVED BY
 HOWARD COUNTY PLANNING COMMISSION *J. H. Clauson* 12-14-66
 SENIOR ENGINEER DATE
 HOWARD COUNTY ROADS DEPARTMENT *Thomas S. O'Neill* 12-14-66
 ROAD SUPT. DATE
 HOWARD COUNTY METROPOLITAN COMMISSION *W. O. L. White* 12-14-66
 CHIEF ENGINEER DATE

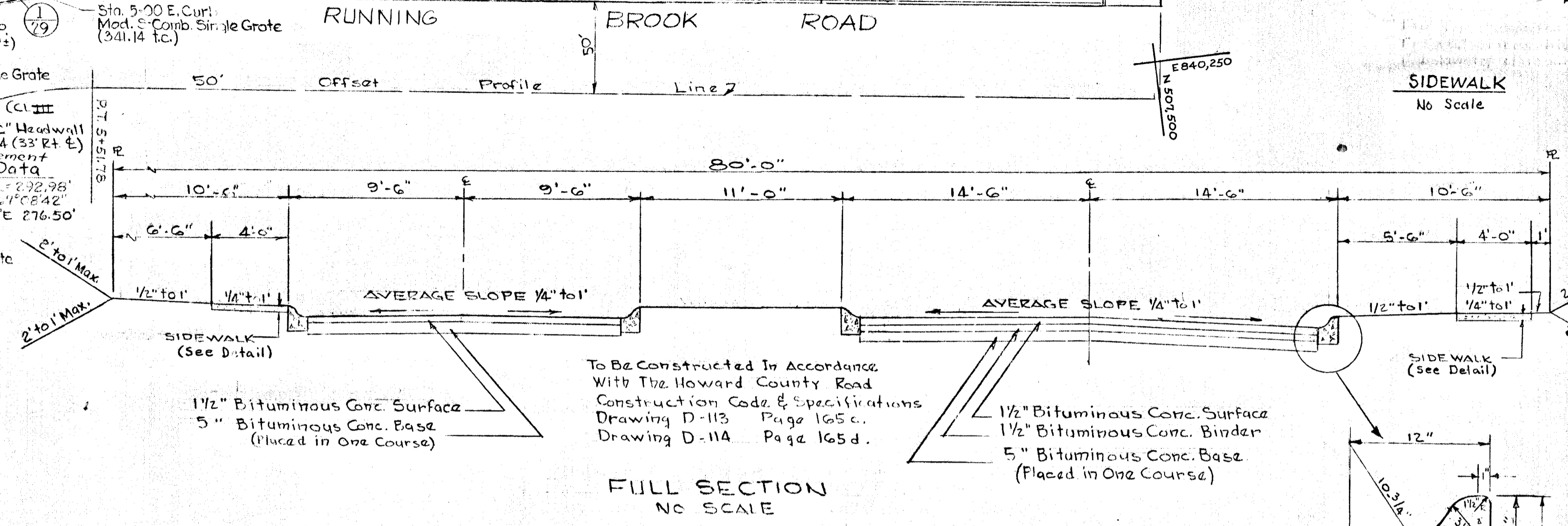
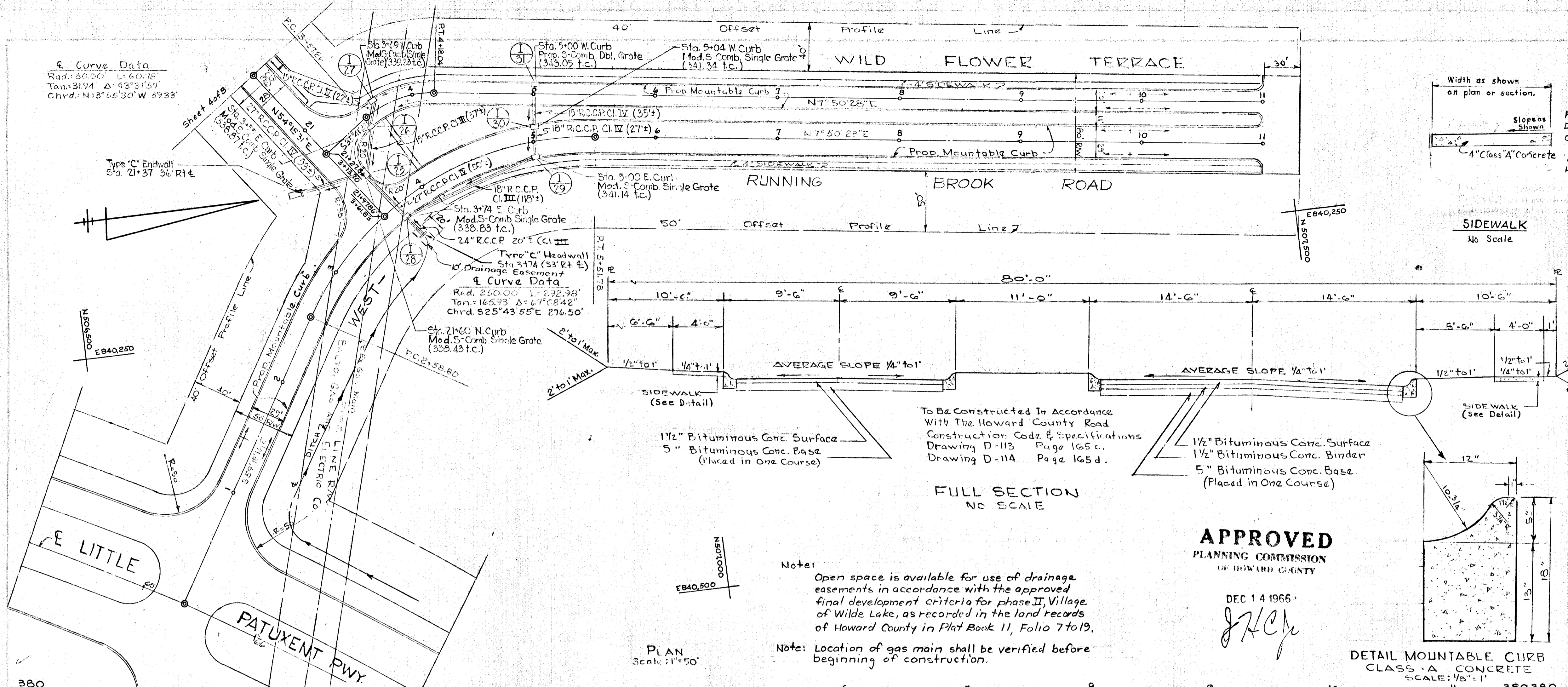
GEORGE W. STEPHENS, JR. & ASSOC., ENGINEERS
 303 ALLEGHENY AVE. TOWSON, MARYLAND



HOWARD RESEARCH
 DEVELOPMENT CORP

DRAW

Curve Data
 Rad: 60.00 L: 60.15
 Tan: 31.94 Δ: 43° 31' 59"
 Chrd: N13° 55' 30" W 59.33'



PLAN
 Scale: 1"=50'

FULL SECTION
 NO SCALE

DETAIL MOUNTABLE CURB
 CLASS-A CONCRETE
 SCALE: 1/8"=1'

Note:
 Open space is available for use of drainage easements in accordance with the approved final development criteria for phase II, Village of Wilde Lake, as recorded in the land records of Howard County in Plat Book 11, Folio 7 to 19.

Note:
 Location of gas main shall be verified before beginning of construction.

APPROVED
 PLANNING COMMISSION
 OF HOWARD COUNTY

DEC 14 1966

JHC

GENERAL NOTES

- For roadway section of Wild Flower Terrace & West-Running Brook Road see detail this sheet.
- For detail of mountable curb see detail this sheet.
- For details of Inlets, Manholes And Endwalls See Special Details And The Following Drawings & pages of Howard Co. Road Construction Code & Standard Specifications.
 - a. Mod. 5" Comb. Inlet (Single Grate) Special Detail Sheet G of B
 - b. 5" Comb. DI Grate - Drawing D-99, Page 154.
 - c. Standard M.H. - Drawing D-103, Page 153
 - d. Type "C" Endwall - Drawing D-57, Page 107

OWNER & DEVELOPER
 HOWARD RESEARCH & DEVELOPMENT CORP.
 THE VILLAGE OF CROSS KEYS
 BALTIMORE, MARYLAND

ENGINEER
 GEORGE W. STEPHENS, JR. & ASSOC.
 303 ALLEGHENY AVE.
 TOWSON, MARYLAND

APPROVED: HOWARD CO. PLANNING COMM. DATE: AUG 8, 1966

SENIOR ENGINEER DATE

APPROVED: HOWARD CO. ROADS DEPT.

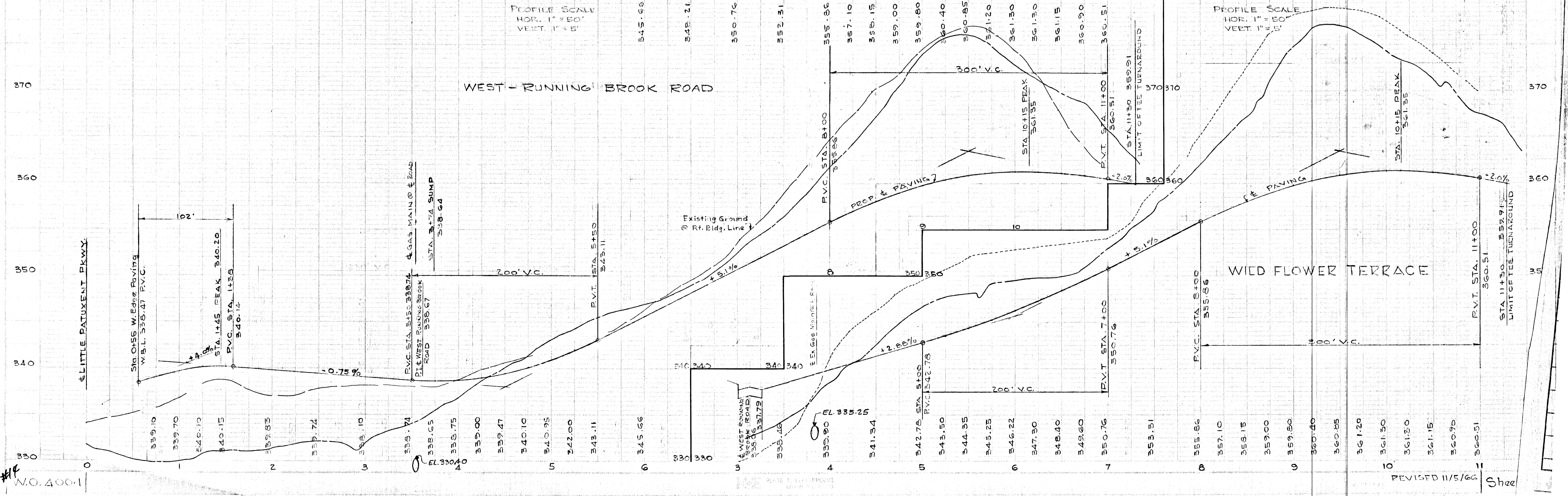
ROADS SUPERINTENDENT DATE

APPROVED: HOWARD CO. MET. COM. DATE

CHIEF ENGINEER DATE

REG #4407

PLAN & PROFILE
 WEST-RUNNING BROOK ROAD
 WILD FLOWER TERRACE
 SECTION ONE
 THE BIRCHES
 HOWARD CO. MARYLAND ELECTION DIST. #5
 SCALE: AS SHOWN JULY 29, 1966



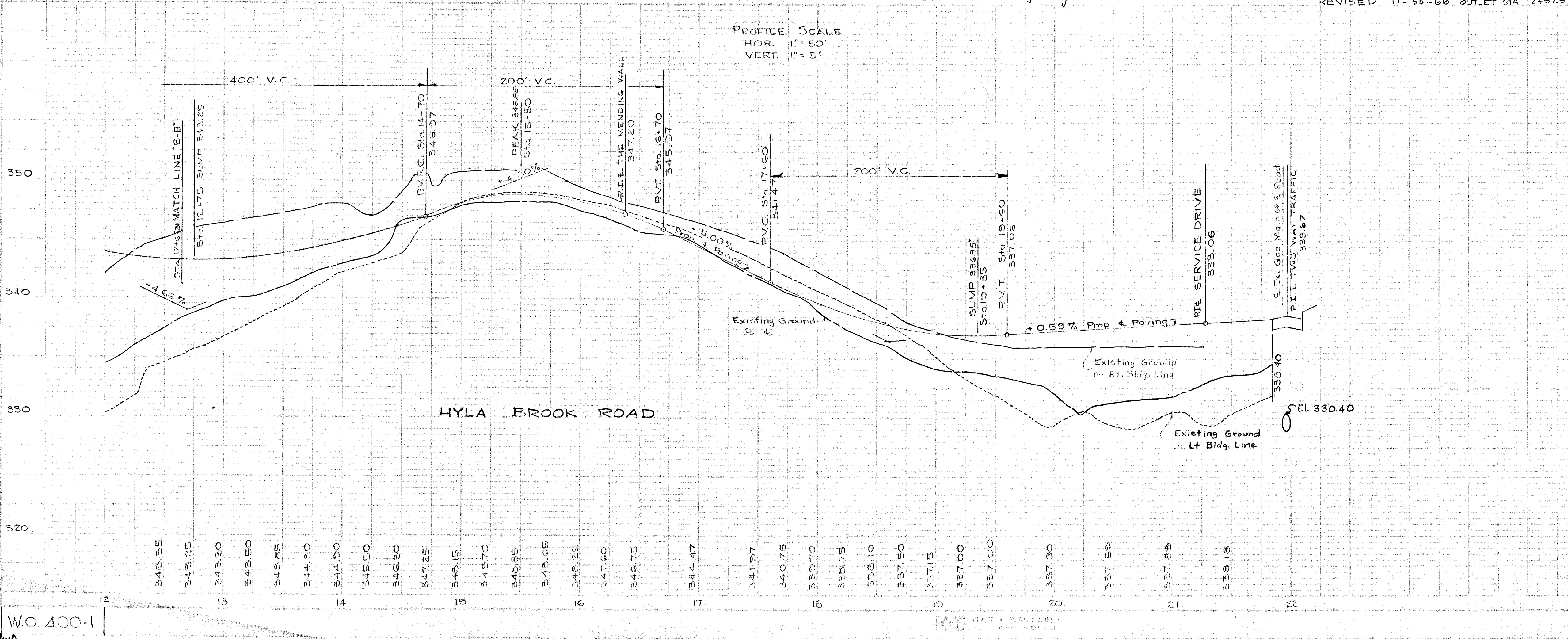
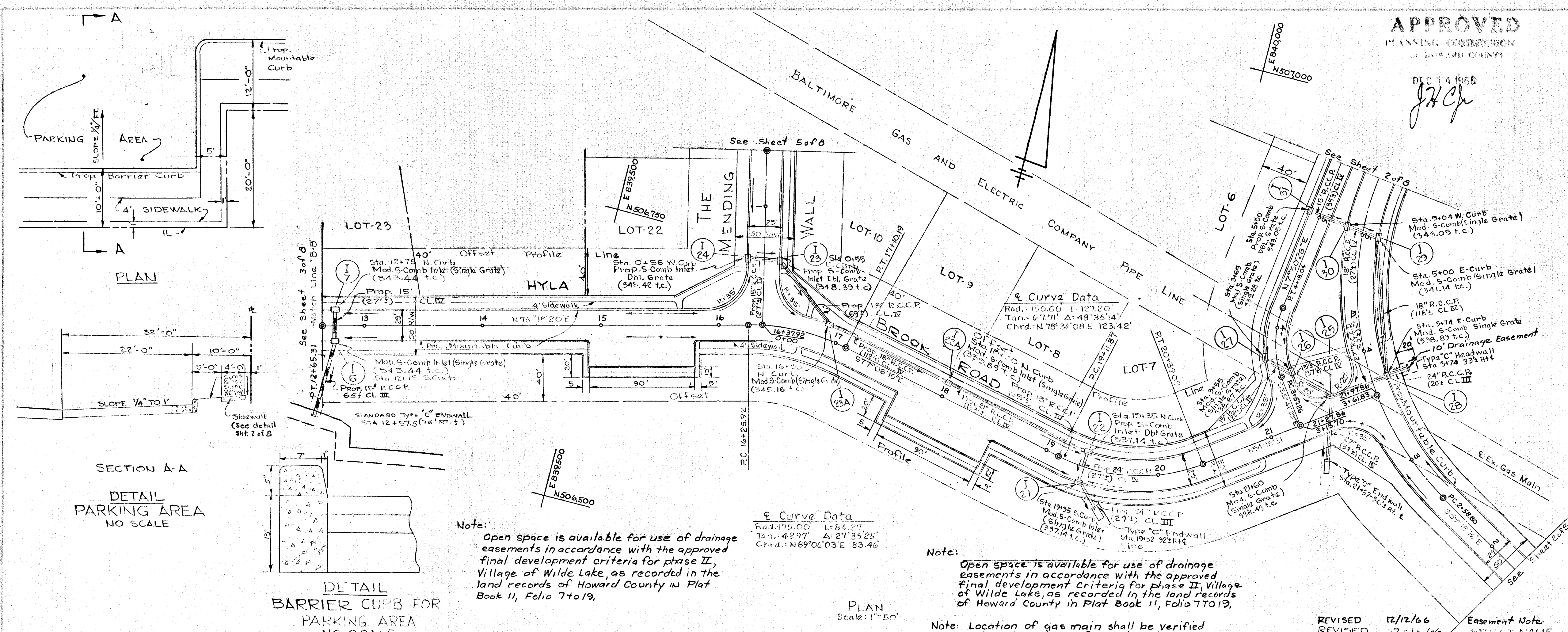
PROFILE SCALE
 HOR. 1"=50'
 VERT. 1"=5'

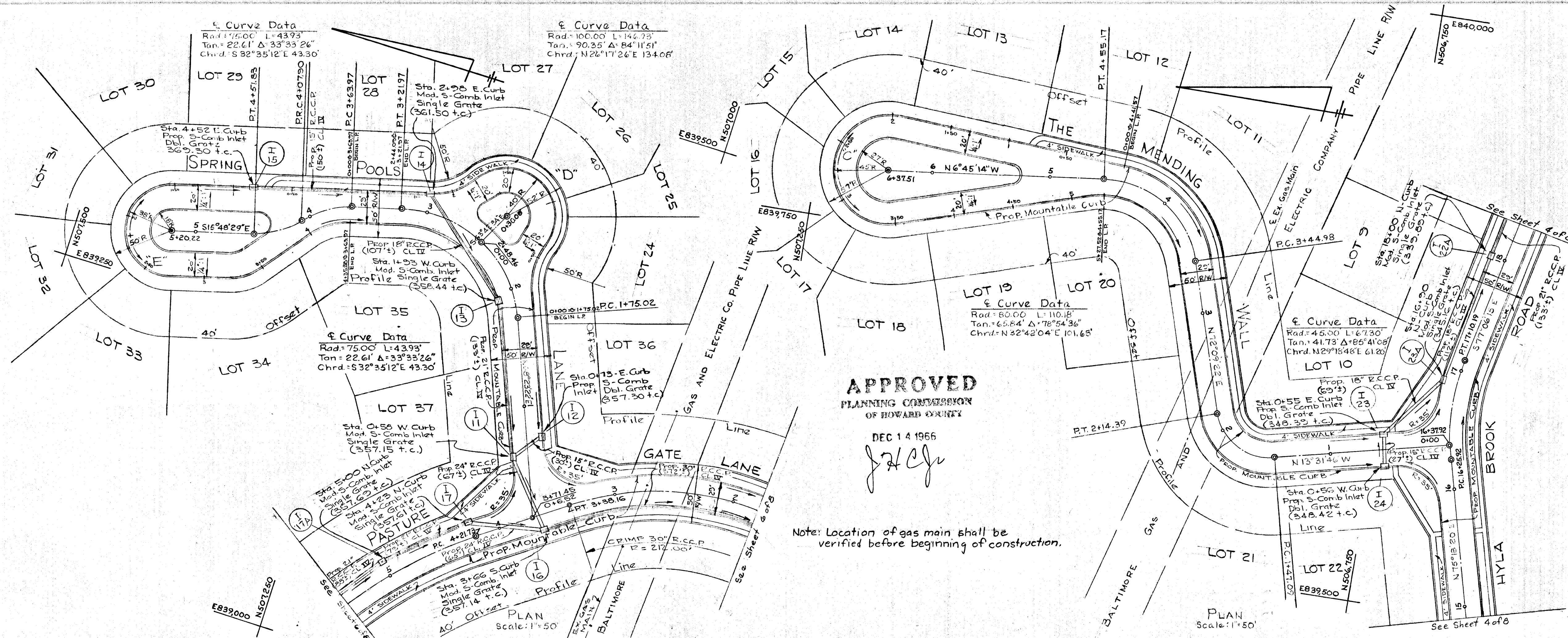
PROFILE SCALE
 HOR. 1"=50'
 VERT. 1"=5'

W.O. 400-1

REVISED 11/5/66

Sheet





GENERAL NOTES

- For roadway section of Spring Pools Lane and The Mending Wall, see detail sheet 6 of 8
- For detail of mountable curb, see detail (Sheet 1 of 8)
- For details of Inlets, Manholes And Endwalls See Special Details And The Following Drawings & Pages Of Howard Co. Road Construction Code & Standard Specifications.
 - A. Mod. S. Comb. Inlet (Single Grate) Special Detail Sheet 6 of 8
 - B. S. Comb. Inlet (Dbl. Grate) Drawing D-92, Page 154
 - C. Standard M.H. - Drawing D-103, Page 158
 - D. Type 'C' Endwall - Drawing D-52, Page 107

REVISED MENDING WALL WIDTH TO 20', ADDED GAS MAIN & NOTE 12/11/66
REVISED STREET NAMES 12/11/66

OWNER & DEVELOPER: HOWARD RESEARCH & DEVELOPMENT CORP. THE VILLAGE OF CROSS KEYS BALTIMORE, MARYLAND

ENGINEER: GEORGE W. STEPHENS, JR. & ASSOC. 303 ALLEGHENY AVE. TOWSON, MARYLAND

APPROVED: HOWARD CO. PLANNING COMM. AUG 8, 1966 DATE

SENIOR ENGINEER DATE

APPROVED: HOWARD CO. ROADS DEPT.

ROADS SUPERINTENDENT DATE

APPROVED: HOWARD CO. MET. COMM.

CHIEF ENGINEER DATE

REG. # 4407

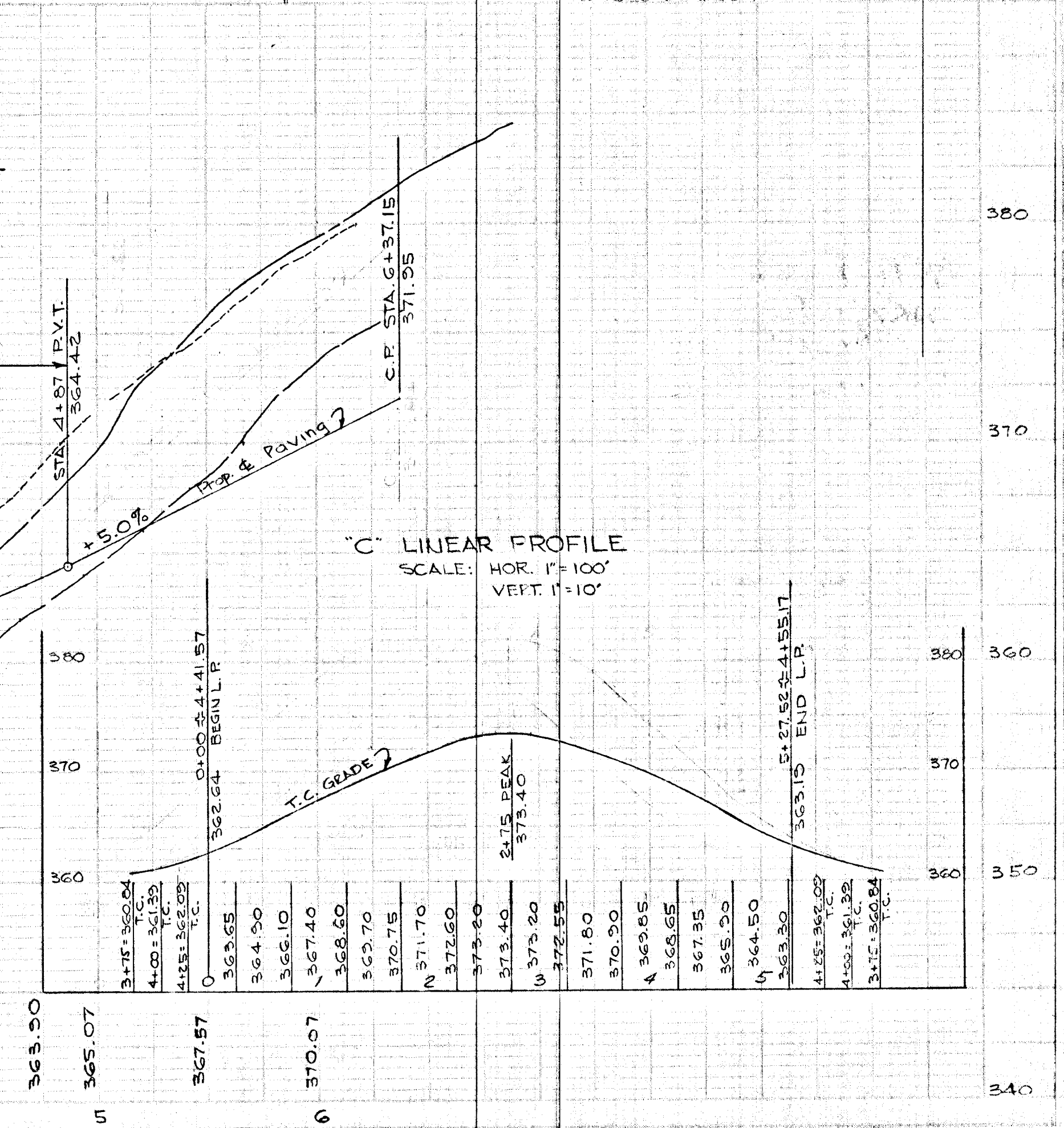
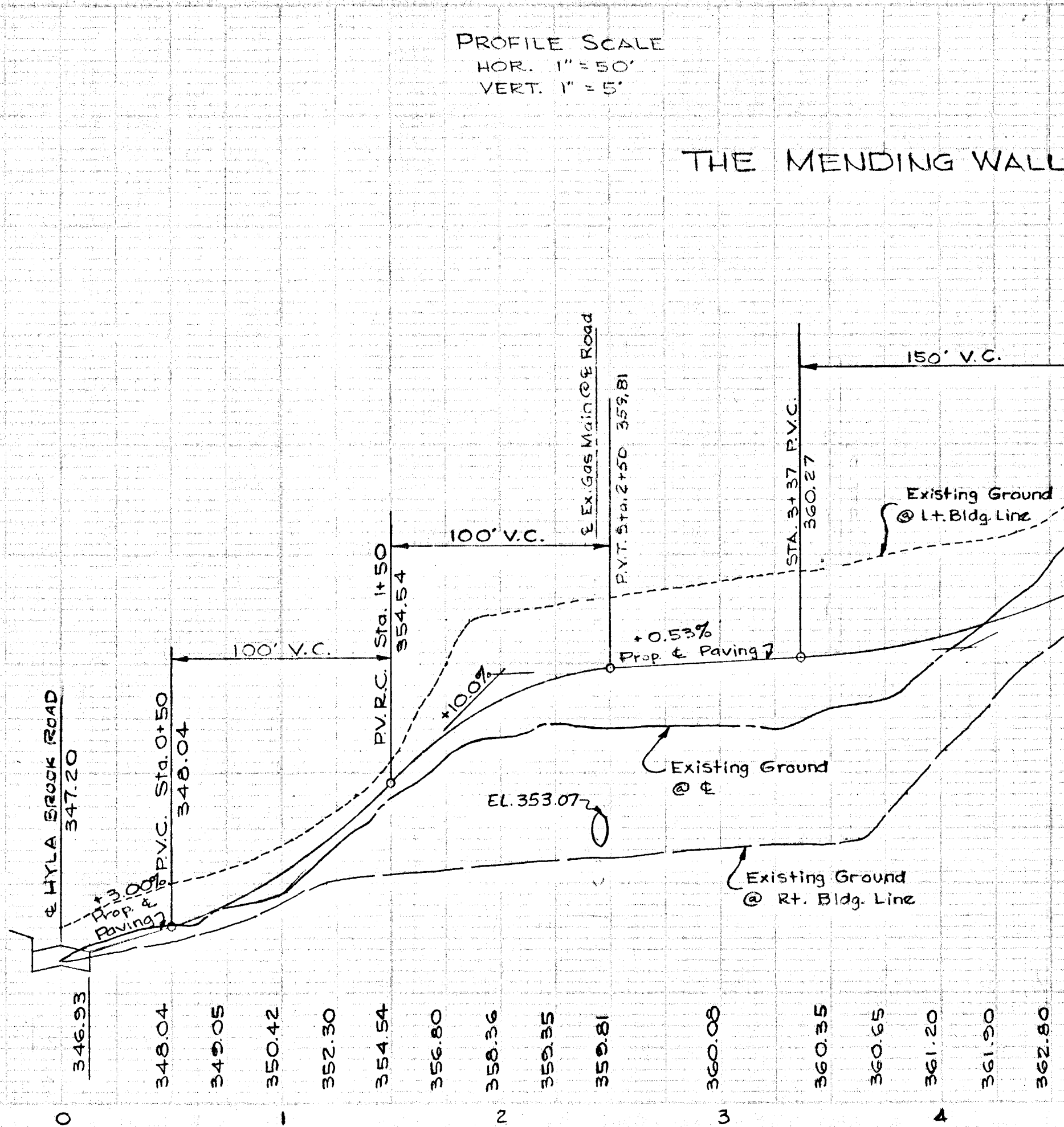
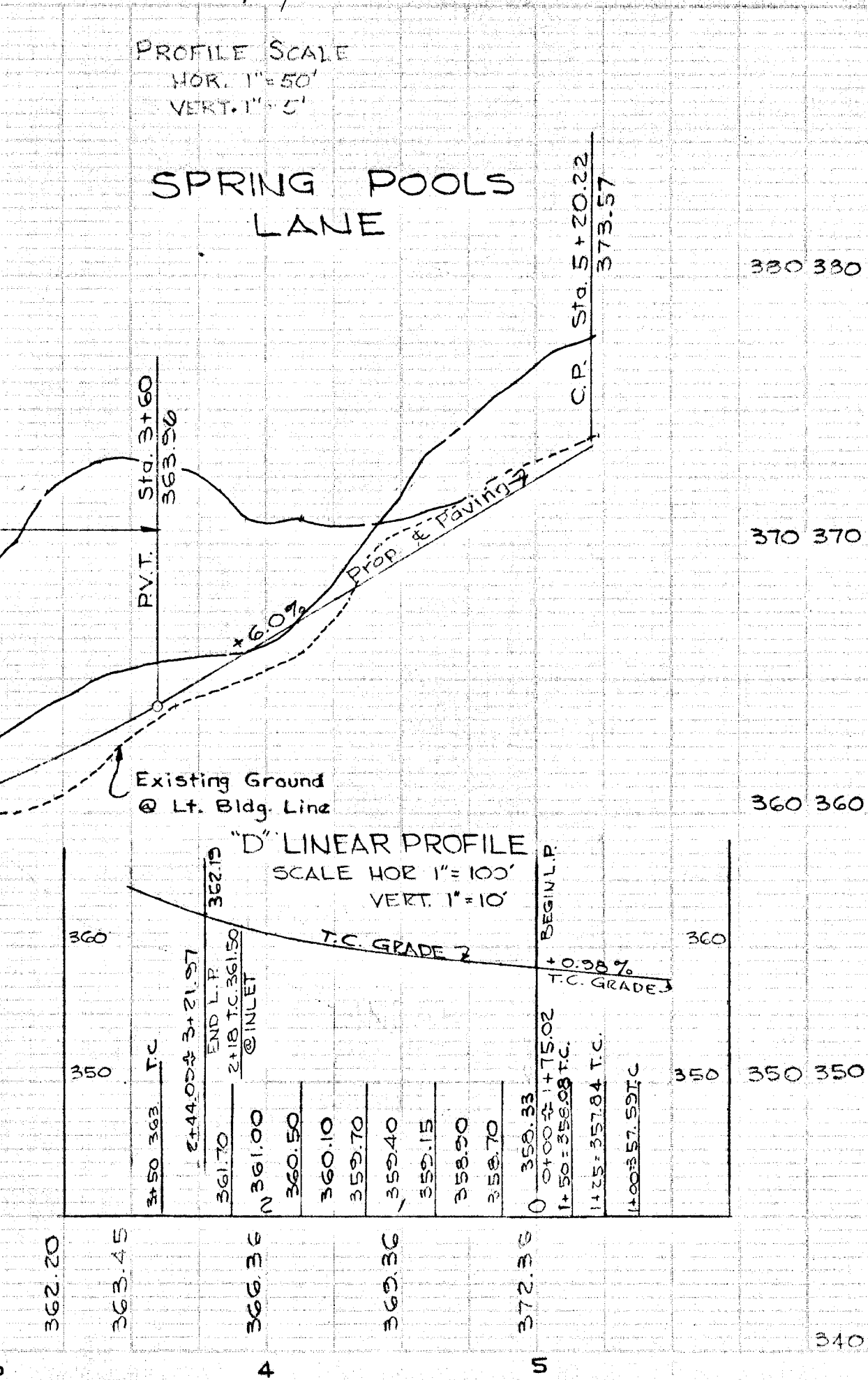
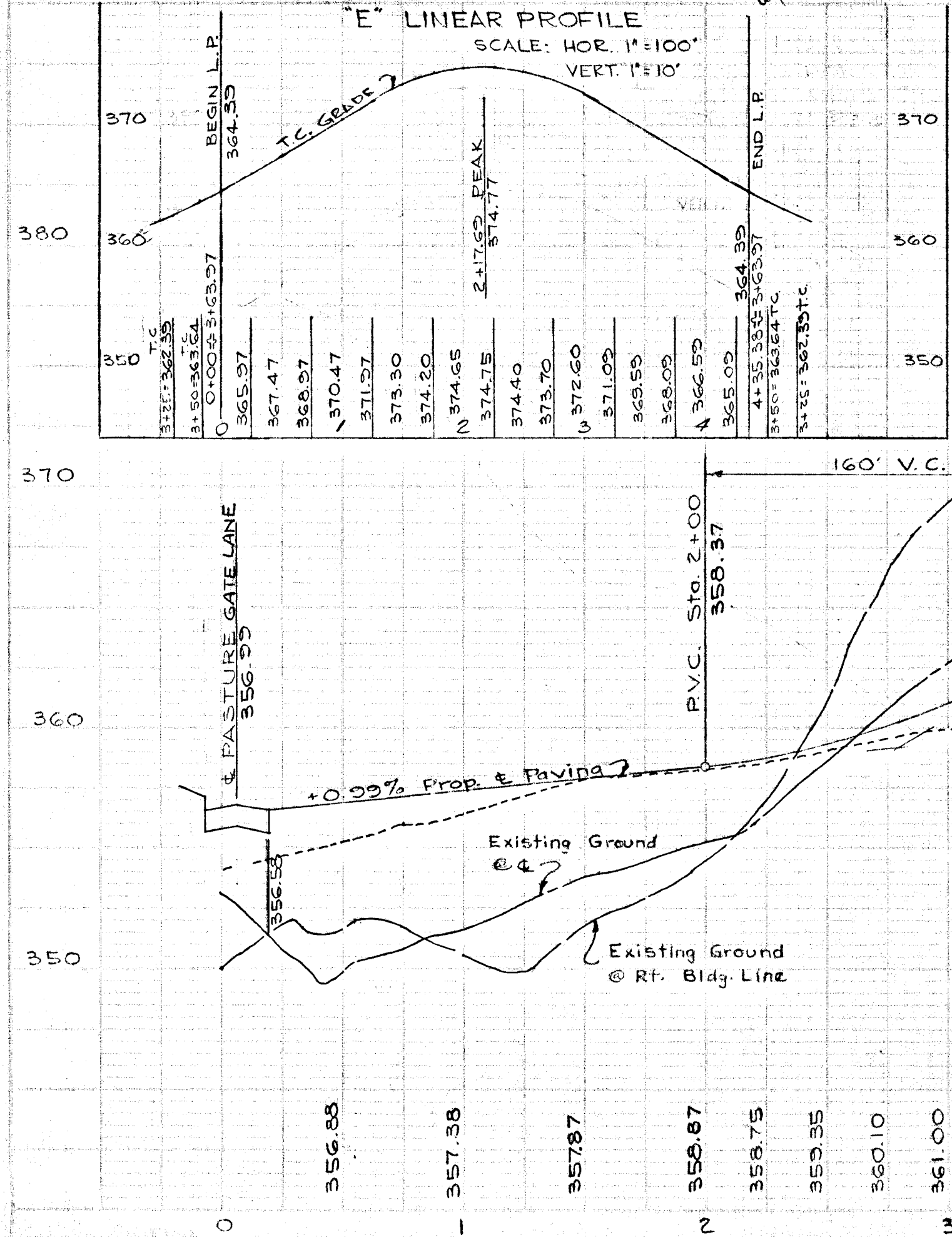
APPROVED
PLANNING COMMISSION
OF HOWARD COUNTY

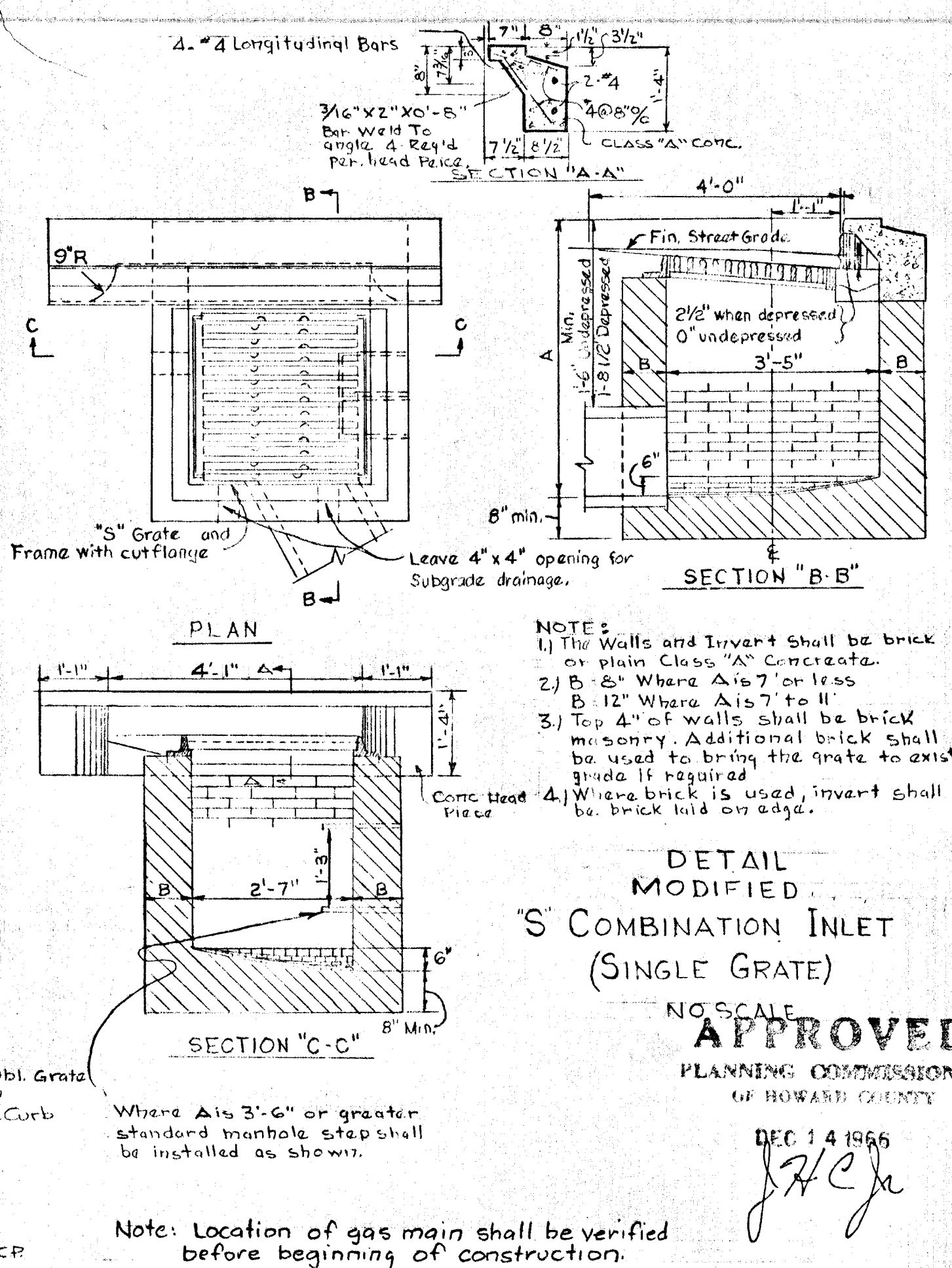
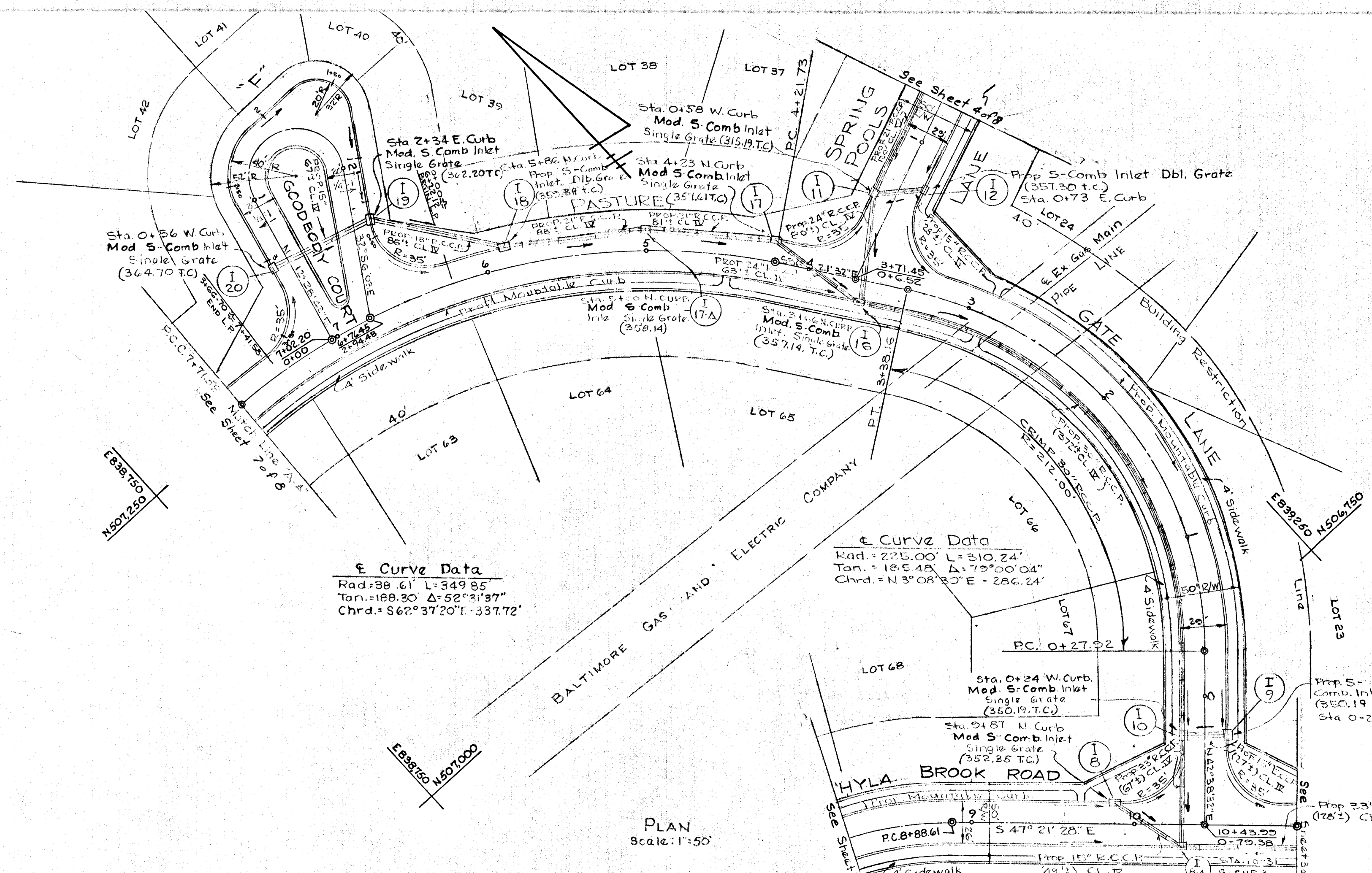
DEC 14 1966

J. J. C. Jr.

Note: Location of gas main shall be verified before beginning of construction.

PLAN & PROFILE
SPRING POOLS LANE
AND THE MENDING WALL
SECTION ONE
THE BIRCHES
HOWARD CO. MARYLAND ELECTION DIST. # 5
SCALE: AS SHOWN JULY 29, 1966

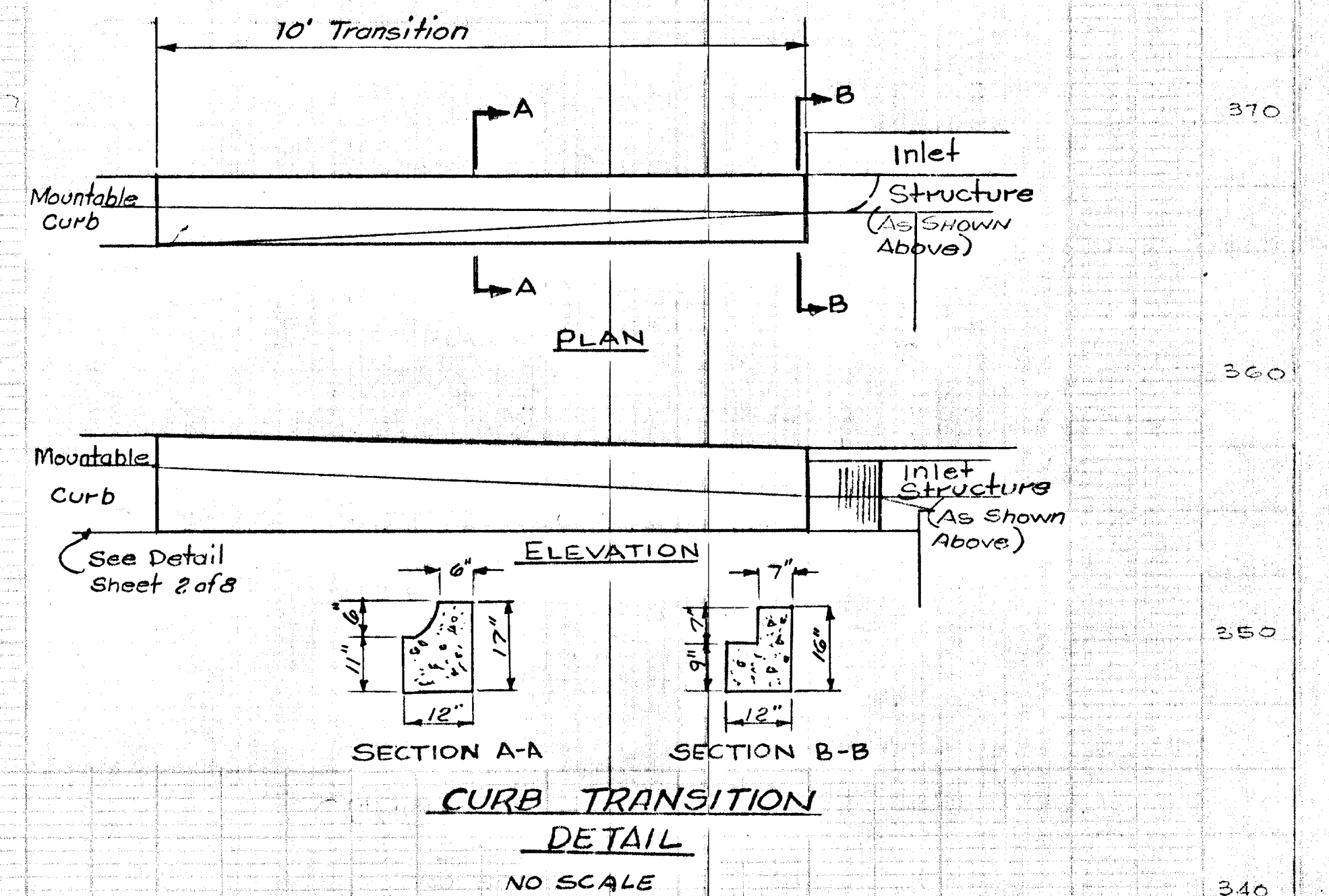
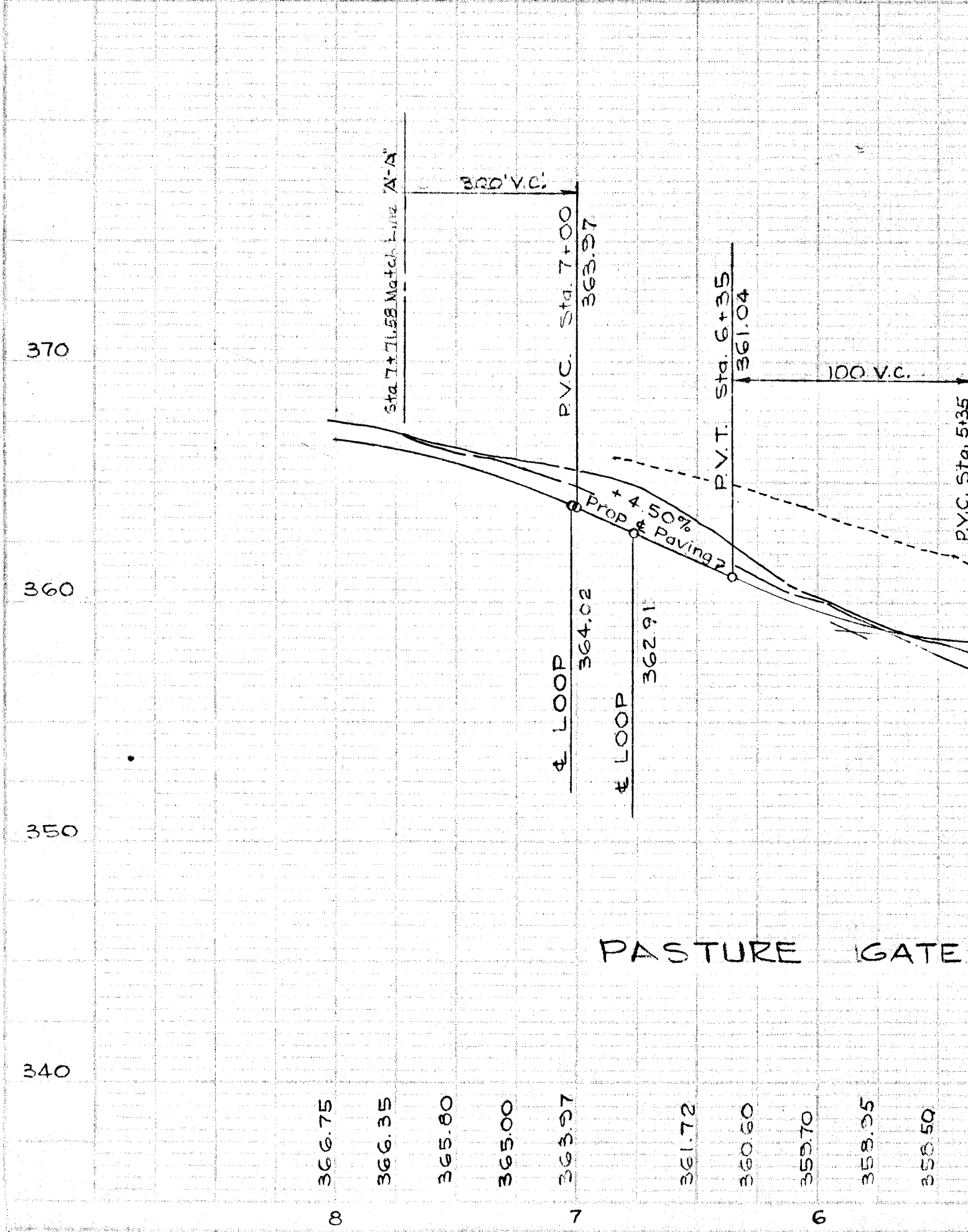
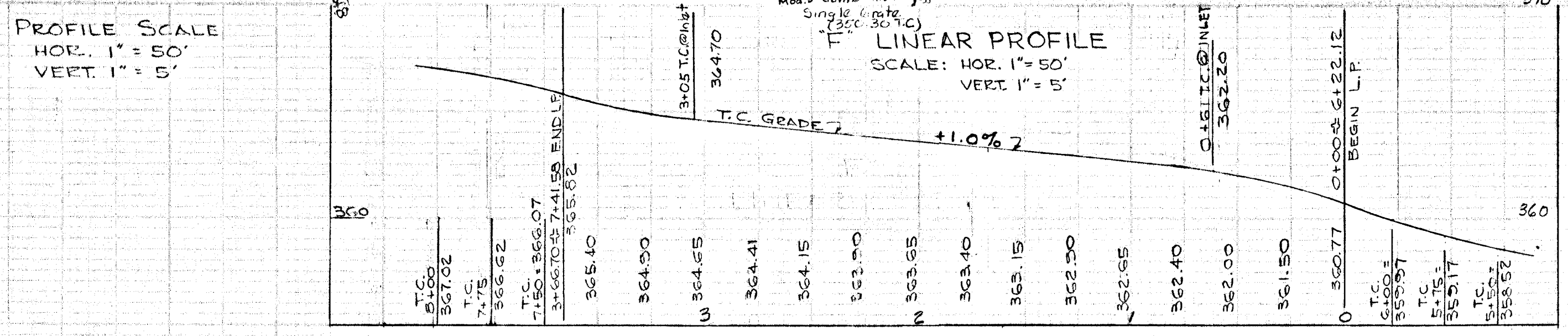


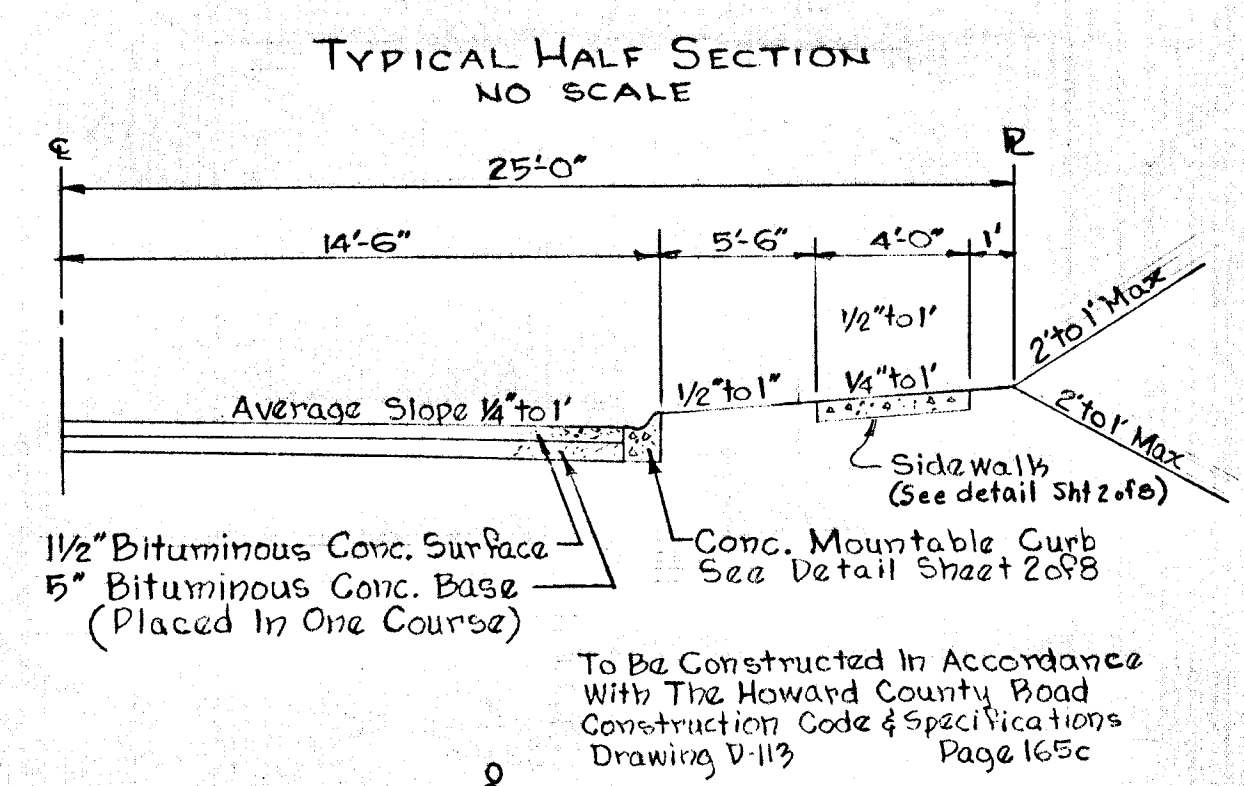
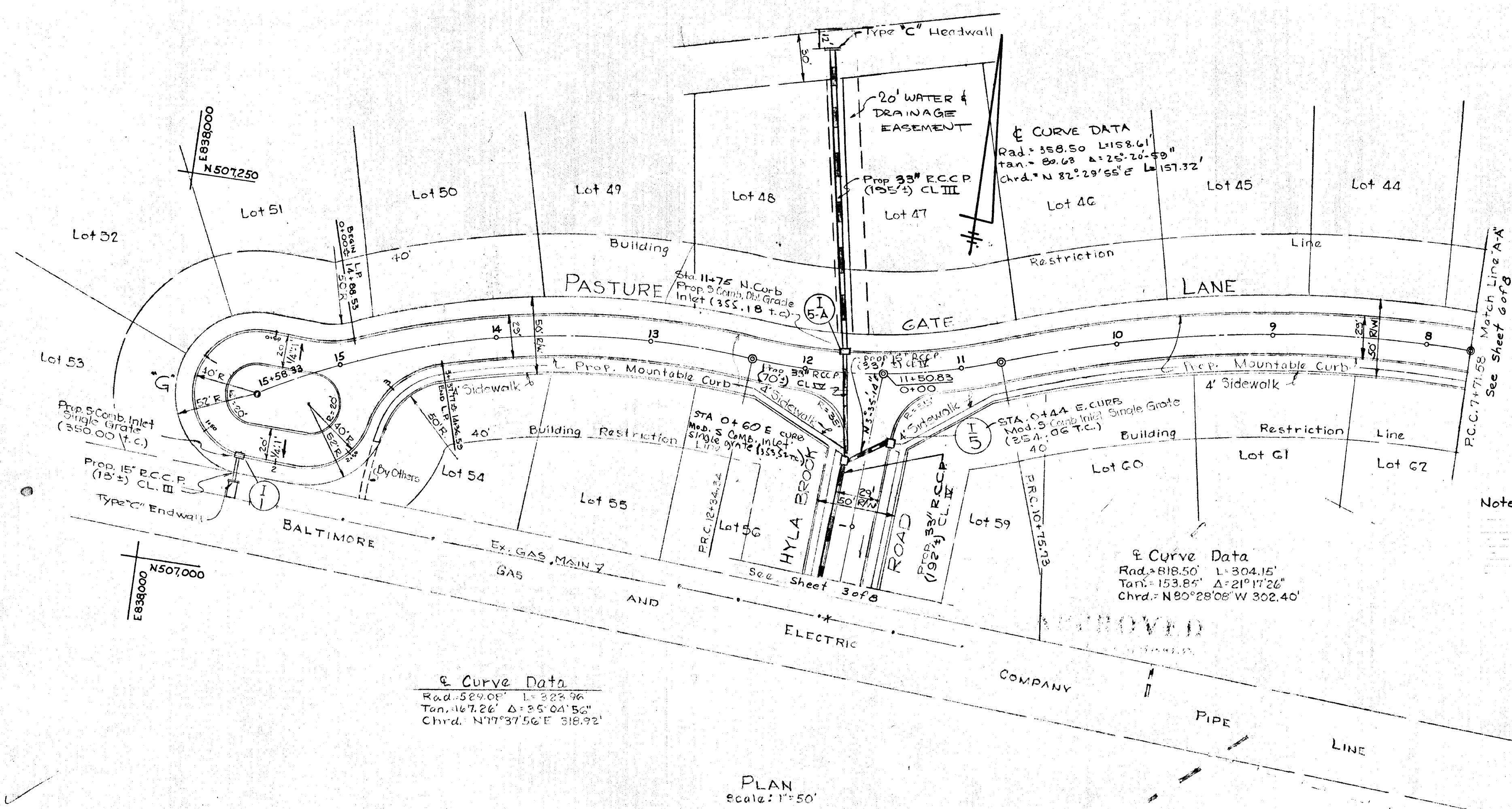


- ### GENERAL NOTES
- For roadway section of Pasture Gate Lane, see detail sheet G of B.
 - For detail of mountable curb, see detail (Sheet I of B).
 - For details of Inlets, Manholes and Endwalls, See Special Details, and the following Drawings & Pages of Howard Co. Road Construction Code & Specifications.
 - a. Mod "S" Comb Inlet (Single Grate) - Special Detail Sheet G of B
 - b. S-Comb Inlet Dbl. Grate - Drawing D-93, Page 154
 - c. Standard V.H. - Drawing D-103, Page 158
 - d. Type "C" Endwall - Drawing D-52, Page 107

OWNER & DEVELOPER HOWARD RESEARCH & DEVELOPMENT CORP. THE VILLAGE OF CROSS KEYS BALTIMORE, MARYLAND	ENGINEER GEORGE W. STEPHENS, JR. & ASSOC. 303 ALLEGHENY AVE. TOWSON, MARYLAND
APPROVED: HOWARD CO. PLANNING COMM.	DATE AUG. 8, 1966
SENIOR ENGINEER	DATE
APPROVED: HOWARD CO. ROAD DEPT.	DATE
ROADS SUPERINTENDENT	DATE
APPROVED: HOWARD CO. MET. COM.	DATE
CHIEF ENGINEER	DATE

PLAN & PROFILE
PASTURE GATE LANE
SECTION ONE
THE BIRCHES
HOWARD CO. MARYLAND ELECTION DIST. #5
SCALE: AS SHOWN
REVISED TRAILS 7-26-66
Add curb transition detail 7/26/66





GENERAL NOTES

- For road section of PASTURE GATE LANE see detail this sheet
- For detail of mountable curb see detail (Sheet 1048)
- For details of Inlets, Manholes And Endwalls, See Special Details And The Following Drawings & Pages Of Howard Co. Roads Construction Code & Specifications.
 - a. Manhole Comb. Inlet (Single Grate) Special Detail Sheet 608
 - b. Comb. Inlet (Double Grate) Drawing D-30 Page 154
 - c. Standard M.H. Drawing D-103, Page 158
 - d. Type 'C' Endwall - Drawing D-52, Page 107

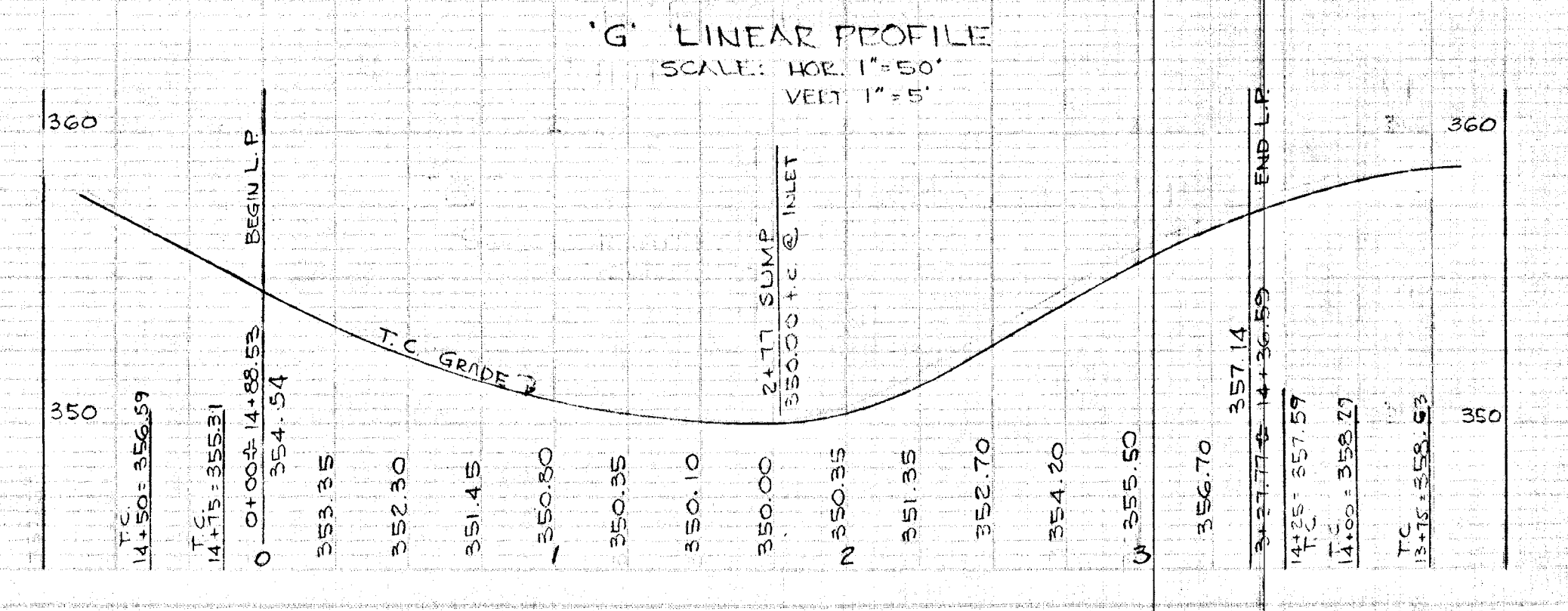
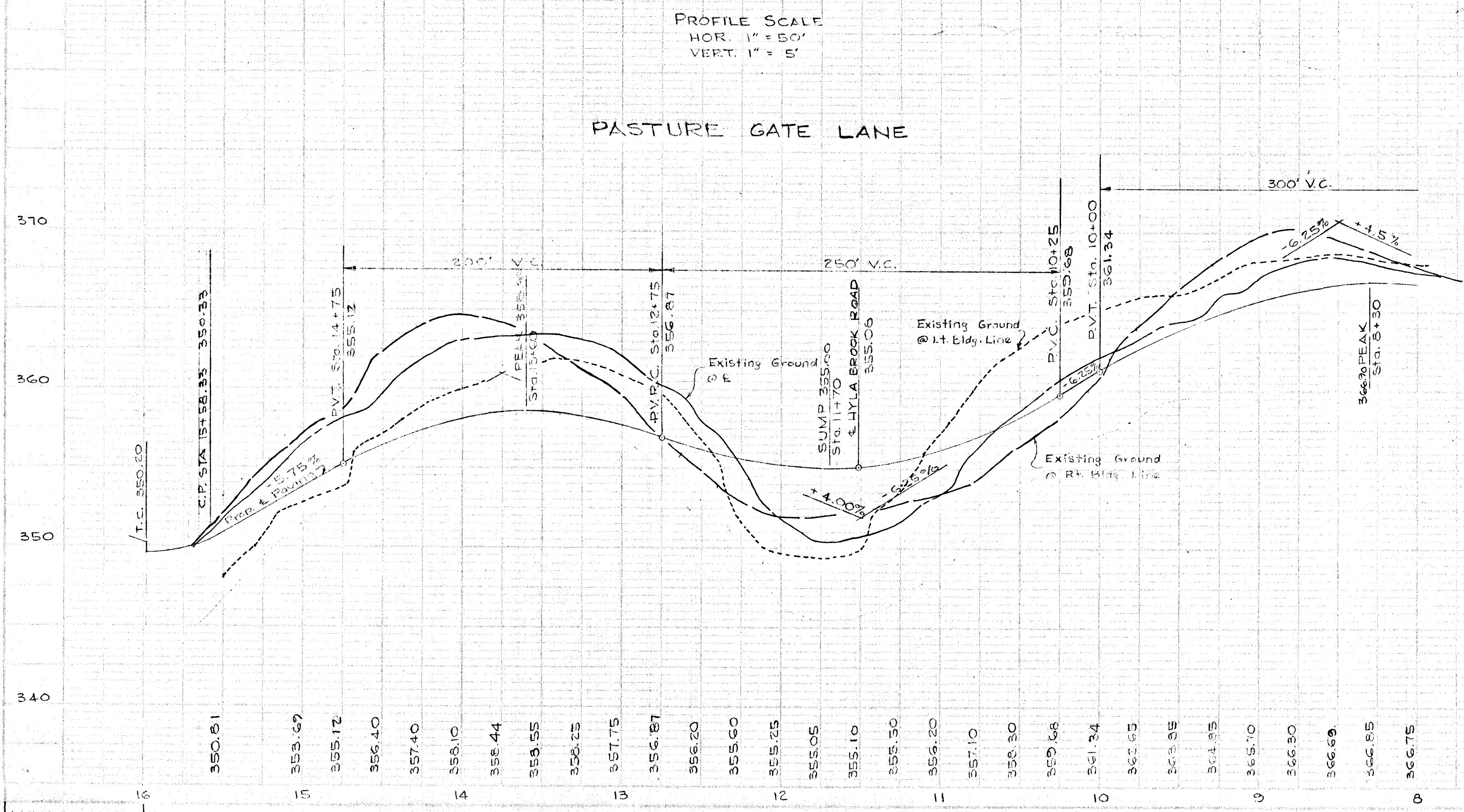
OWNER & DEVELOPER HOWARD RESEARCH & DEVELOPMENT CORP THE VILLAGE OF GROSS KEYS BALTIMORE, MARYLAND		ENGINEER GEORGE W. STEPHENS, JR. & ASSOC. 303 ALLEGHENY AVE. TOWSON, MARYLAND	
APPROVED: HOWARD CO. PLANNING COMM.	DATE AUG 2, 1966		
SENIOR ENGINEER	DATE	APPROVED: HOWARD CO. ROADS DEPT.	
ROADS SUPERINTENDENT	DATE	APPROVED: HOWARD CO. MET. COMM.	
CHIEF ENGINEER	DATE	REG. #4407	

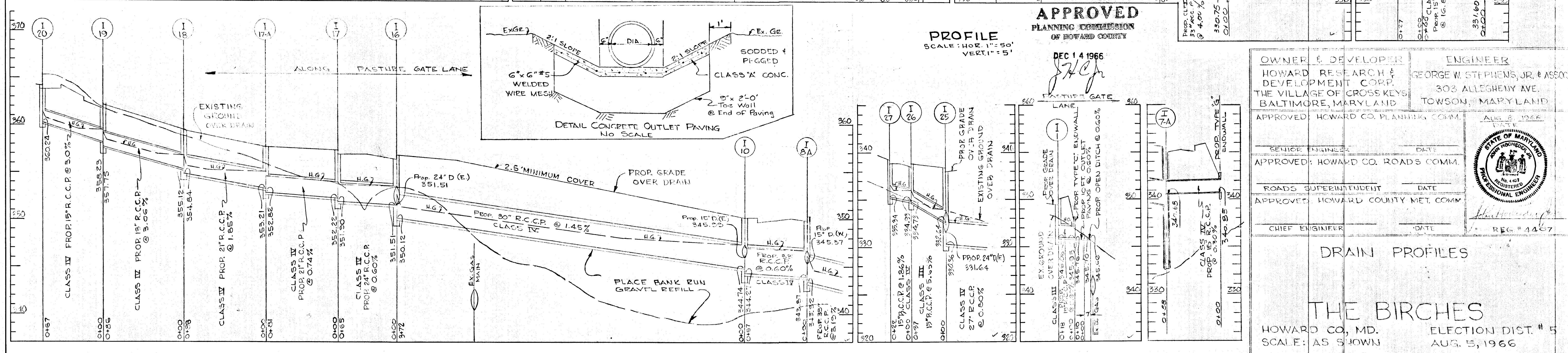
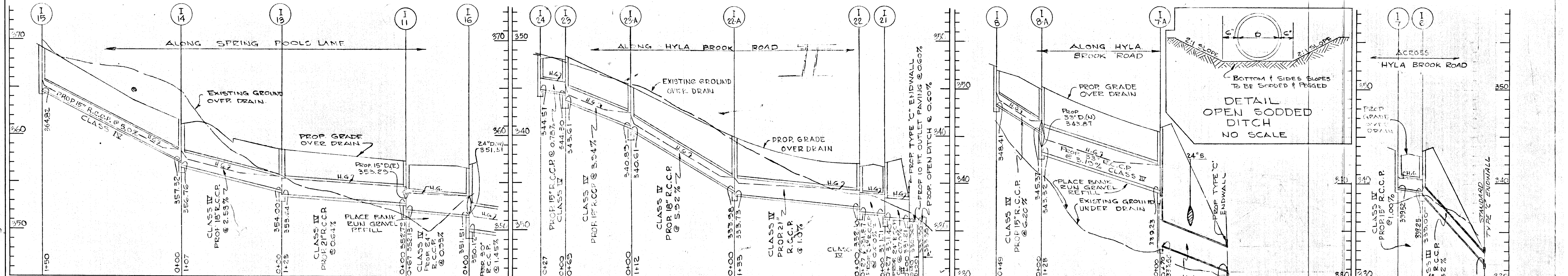
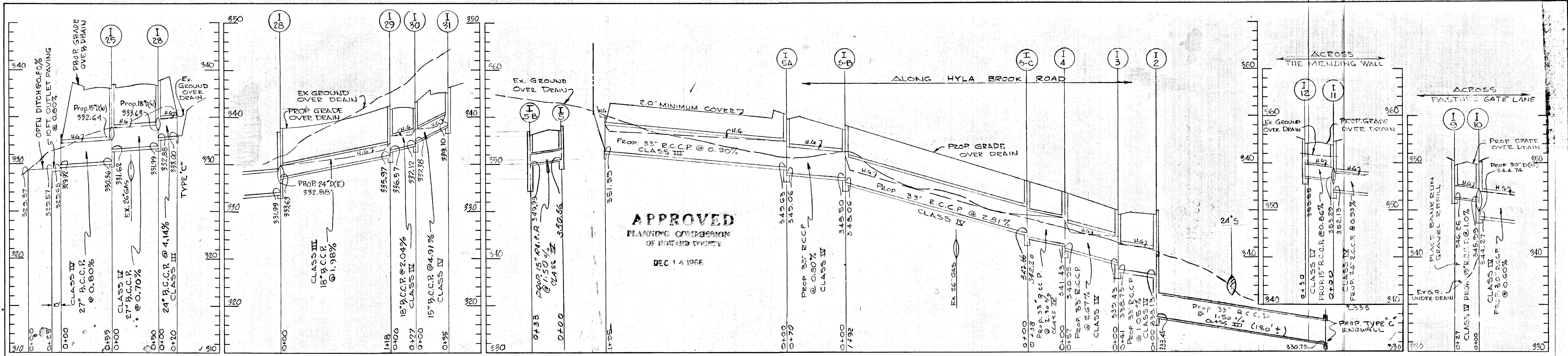
Note: Open space is available for use of drainage easements in accordance with the approved final development criteria for phase II Village of Wilde Lake, as recorded in the land records of Howard County in Plat Book 11, Folio 7 to 19.

APPROVED
 PLANNING COMMISSION
 OF HOWARD COUNTY

DEC 14 1966
JWC

PLAN & PROFILE
 PASTURE GATE LANE
 SECTION ONE
 THE BIRCHES
 HOWARD CO. MARYLAND ELECTION DIST #5
 SCALE: AS SHOWN JULY 29, 1966
 REVISED DRAINS 9-26-66





APPROVED
PLANNING COMMISSION
OF HOWARD COUNTY
DEC 14 1966

APPROVED
PLANNING COMMISSION
OF HOWARD COUNTY
DEC 14 1966

PROFILE
SCALE: HOR. 1" = 50'
VERT. 1" = 5'

OWNER & DEVELOPER
HOWARD RESEARCH & DEVELOPMENT CORP.
THE VILLAGE OF CROSS KEYS
BALTIMORE, MARYLAND

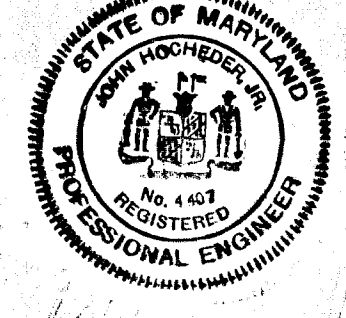
ENGINEER
GEORGE W. STEPHENS, JR. & ASSOC.
303 ALLEGHENY AVE.
TOWSON, MARYLAND

APPROVED: HOWARD CO. PLANNING COMM. DATE: AUG 5, 1966

APPROVED: HOWARD CO. ROADS COMM. DATE:

APPROVED: HOWARD COUNTY MET. COMM. DATE:

REG. # 1467



DRAIN PROFILES

THE BIRCHES
HOWARD CO., MD. ELECTION DIST. # 5
SCALE: AS SHOWN AUG. 5, 1966

REVISED DRAINS 9-20-66
REVISED 11/5/66
REVISED 11/22/66
REVISED 11/30/66
REVISED 12/1/66
REVISED 12/16/66