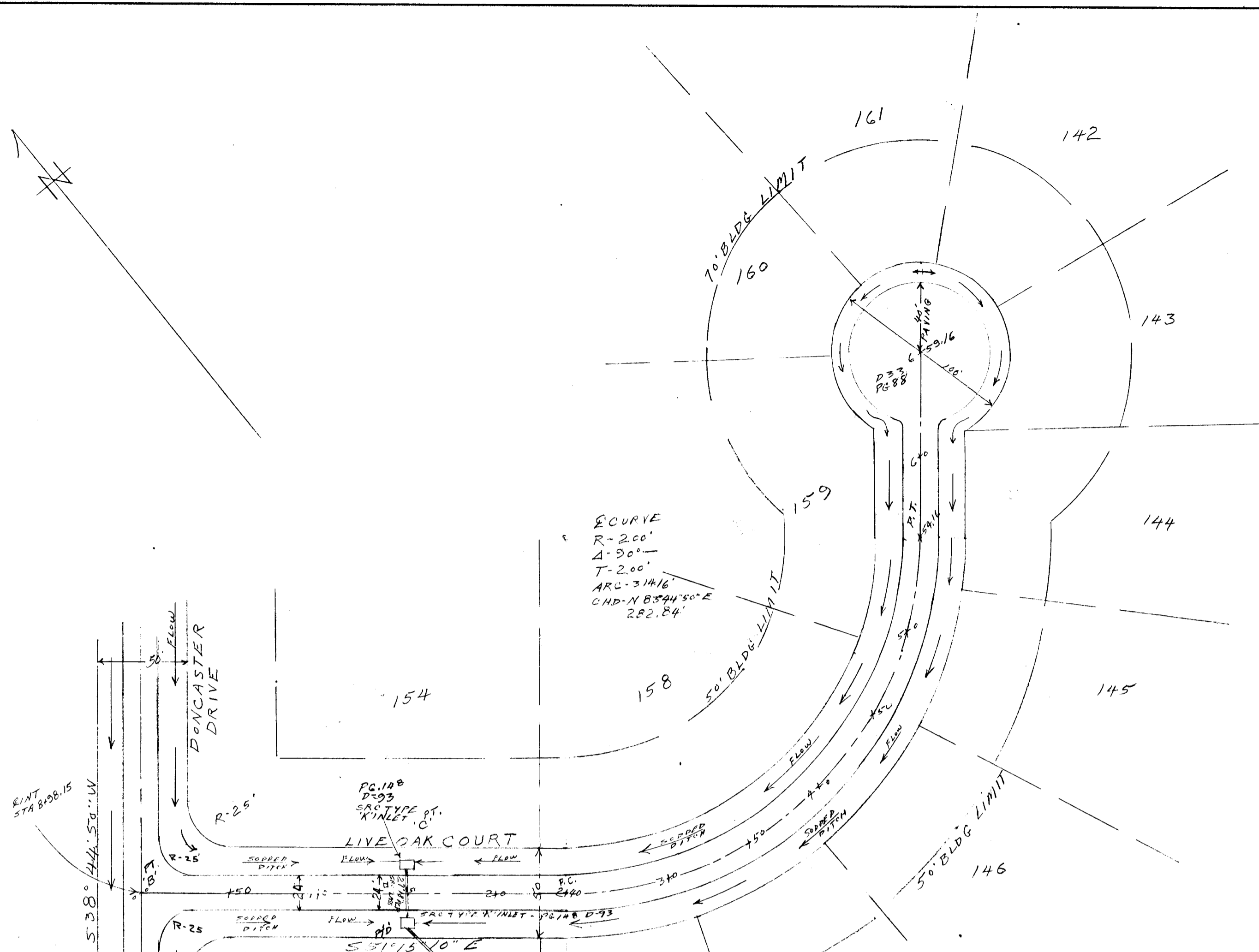


DATE	
BY	
NO.	
PLANNING	
NOTE BOOK	
ALIGNED CHECKED	
RT. OF WAY CHECKED	

DATE	
BY	
NO.	
PROFILES	
NOTE BOOK	
GRADES CHECKED	
B.M. NOTED	
STRUCTURE NOTATIONS CHKO.	



SCHEDULE OF DRAWING DETAILS

STRUCTURE	DRAWING NO.	PAGE NO.
K INLET	D-53	148
CURB WALL	D-52	107
RESIDENTIAL ST. STAND CHM		
TURNAROUND	D-6	61
CULDE-SAC	D-33	88
TEMP. DEM. END PAVEMENT	D-33	88
PAVEMENT	D-109	164

4 PER HOWARD COUNTY ROAD CONSTRUCTION CODE & STANDARD SPECIFICATIONS NOV. 24, 1962

4-7-66 J. H. Clawson, Jr. Senior Engineer  
 DATE J. H. CLAWSON, JR.  
 4-4-66 Herman S. O'Neill  
 DATE HERMAN S. O'NEILL, COUNTY ROADS SUPERVISOR  
 4-7-66 W. O. Libbit  
 DATE WILLIAM O. LIBBIT, CIVIL ENGINEER, METROPOLITAN COMMISSION

APPROVED  
 PLANNING COMMISSION  
 OF HOWARD COUNTY

KINDS DIVISION  
 MOTORVEHICLE DIVISION

Claude M. Skinner, Jr.  
 REGISTERED PROFESSIONAL ENGINEER  
 11 COURT PLACE  
 ELLICOTT CITY, MD.

