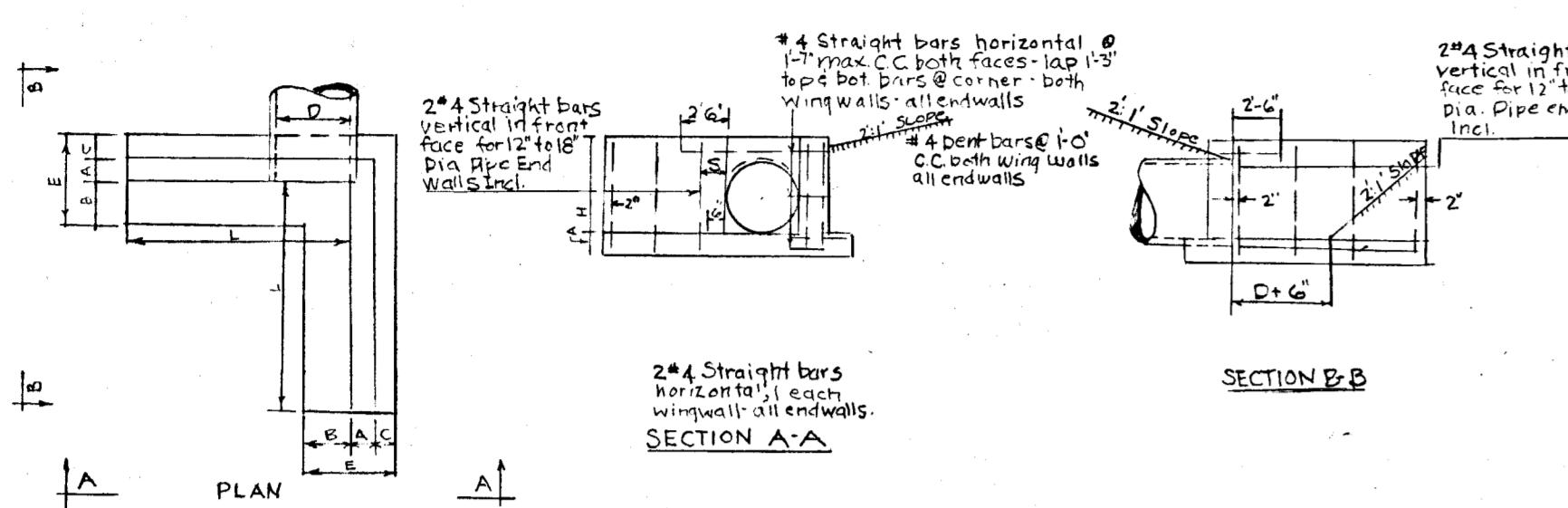


BEAN PROPERTY
 PAVING — STORM SEWER
 and
 GRADE ESTABLISHMENT
 S. TABEAN DRIVE
 5th ELECTION DISTRICT
 HOWARD COUNTY
 MARYLAND.

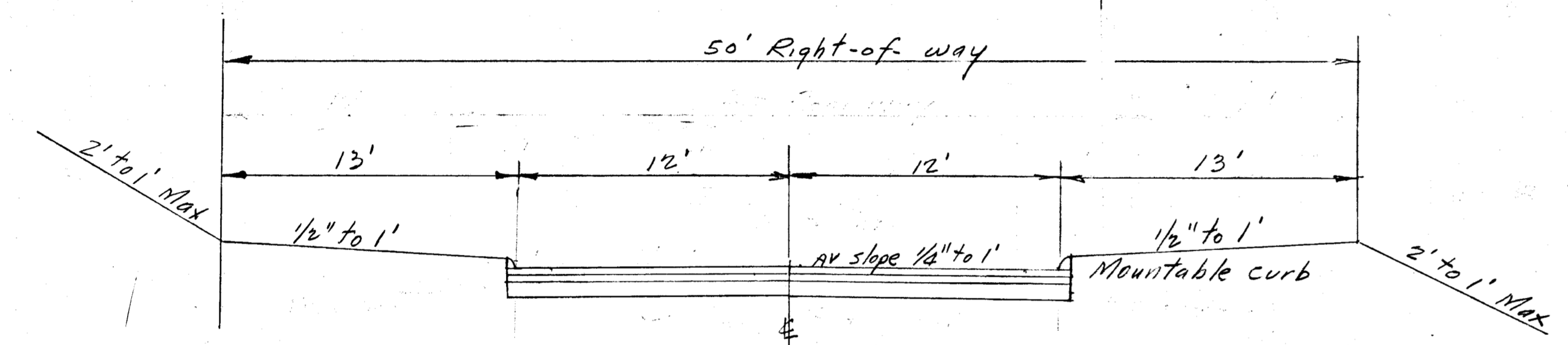
Scale 1" = 50' Horizontal
 1" = 5' Vertical



STANDARD TYPE "E" ENDWALL

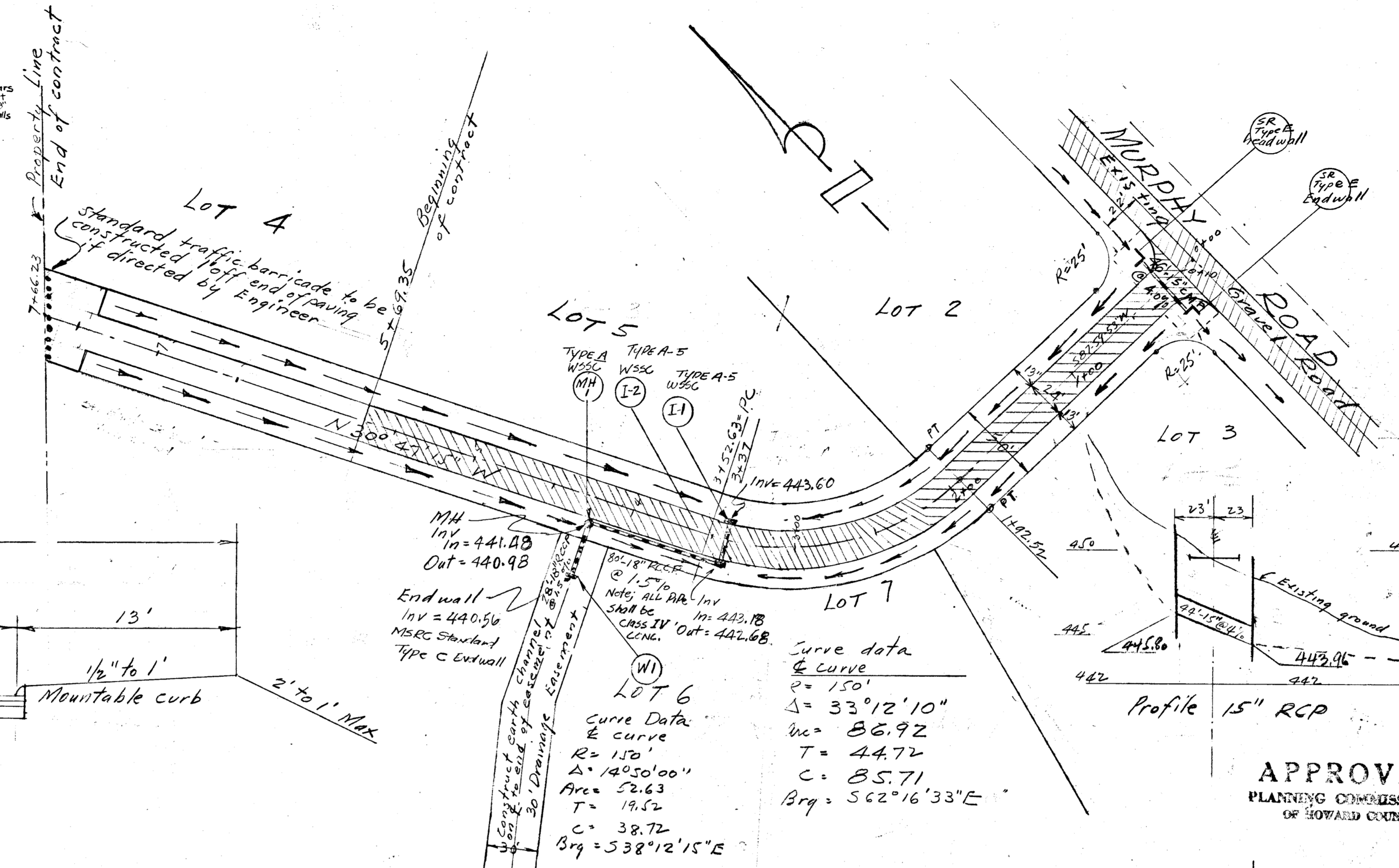
Dimensions	Dimensions						Volume	Steel
Code	A	B	C	E	H	L	Cu	Lbs
1B	1.25	9	6	6	12.0	24.0	0.92	77

DISPOSITION OF BARS DETAIL
 General Notes:
 Specifications: Latest S.R.C.
 Concrete: 3000 S.R.C. Spec.
 Reinforcing: Deformed steel bars #4 bars (3/8")
 Chamfer: All exposed edges 1/8" as directed



MINIMUM 9" OF COMPACTED BANK RUN GRAVEL MSRC SPEC
 2 LB CALCIUM CHLORIDE PER SQ YD - LEAVE 30 DAYS
 APPLY 4/10 GAL PRIME OIL PER SQ YD - LEAVE 5 DAYS
 1 1/2" COMP SPEC "B" BIT CONCRETE BASE COURSE
 1" COMP SPEC "B" BIT CONCRETE SURFACE COURSE

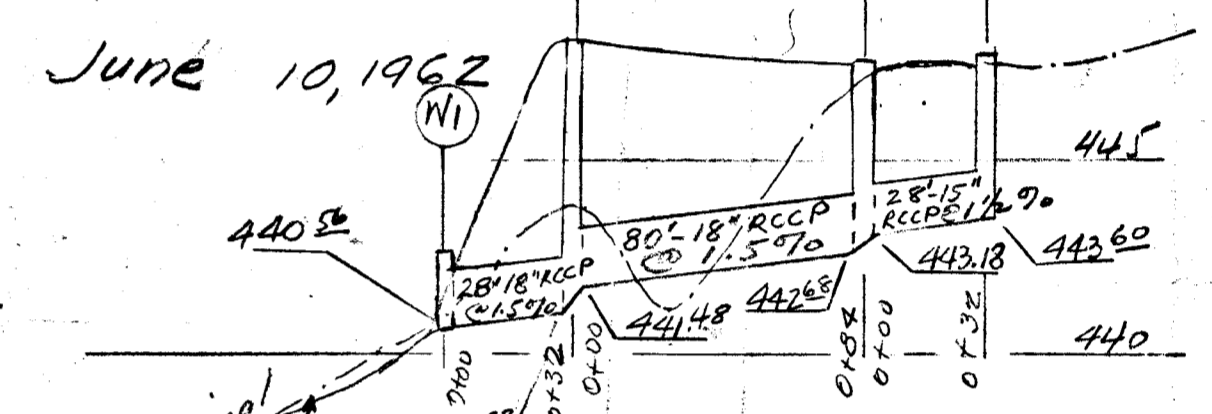
Paving Section
 Scale 1" = 5'



MH
 Inv = 441.08
 Out = 440.98
 End wall
 Inv = 440.56
 MSRC Standard
 Type C End wall

Curve data
 & curve
 R = 150'
 Δ = 33°12'10"
 Lc = 86.92
 T = 44.72
 C = 85.71
 Brg = S 62°16'33"E

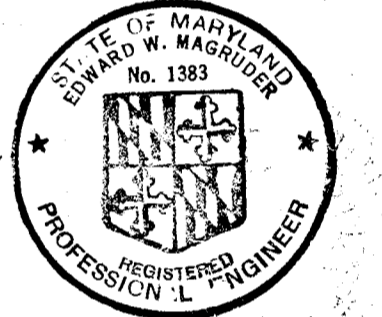
LOT 6
 Curve Data
 & curve
 R = 150'
 Δ = 140°50'00"
 Area = 52.63
 T = 19.52
 C = 38.72
 Brg = S 38°12'15"E



Profile 15" RCP

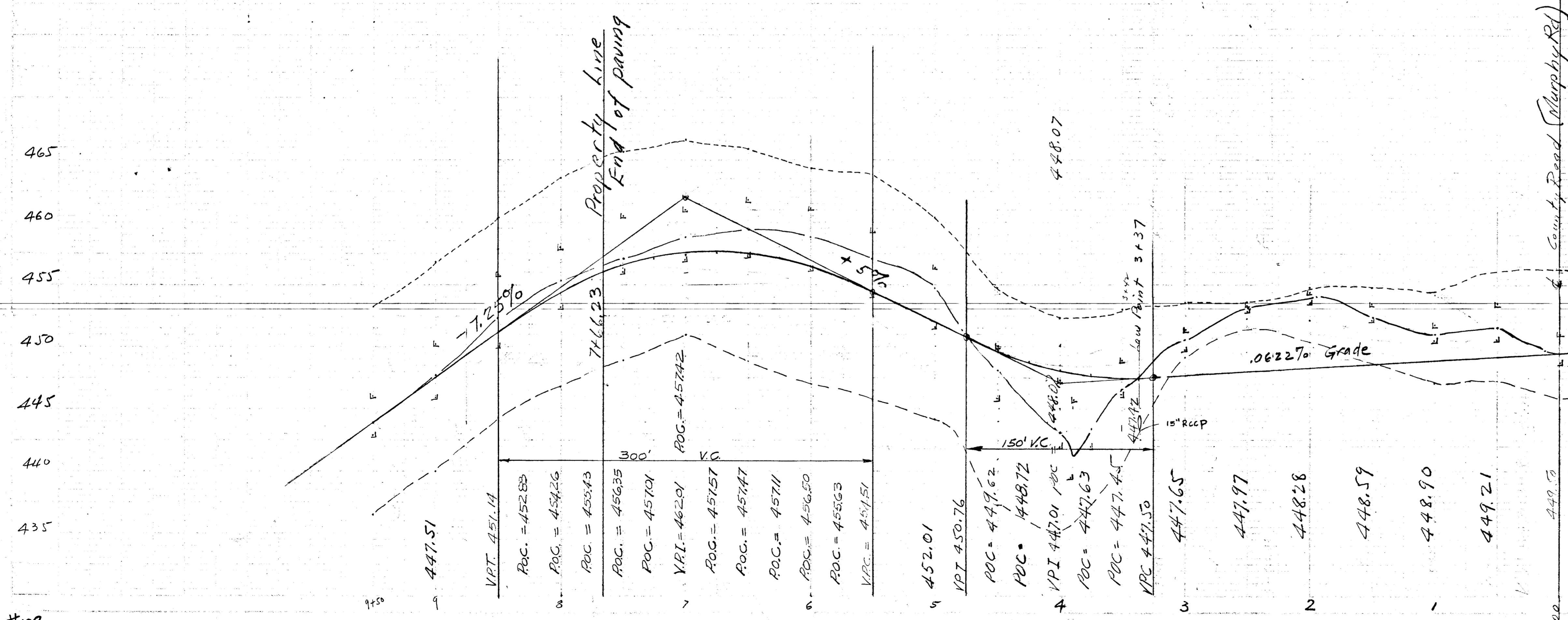
APPROVED
 PLANNING COMMISSION
 OF HOWARD COUNTY

EDWARD W. MAGRUDER & ASSOC.
 ENGINEERS & SURVEYORS
 1835 SHEPHERD ST., N.W.
 WASHINGTON, D.C.
 Ra 3-0184



Owners: Mr & Mrs. Stanley J. Bean
 Murphy Road
 Fulton, Md.

776-7973.



LEGEND

- 100' Right = - - - - -
- 25' Right = ————
- Existing & 25' Left = ————
- 100' Left = - - - - -

NOTE:
 Approval requested for improvements between
 Sta. 5+67.50 & Sta. 7+66.23 only.

APPROVED:
 J. P. Dawson, Planning Comm. S. J. Pappas, County Roads W. O. Salbert, Chief Eng. Metropolitan Comm.

Rev Jan 20, 1965
 Rev Oct 22, 1963
 Rev May 15, 1963

