

REVISION DESCRIPTION	DATE

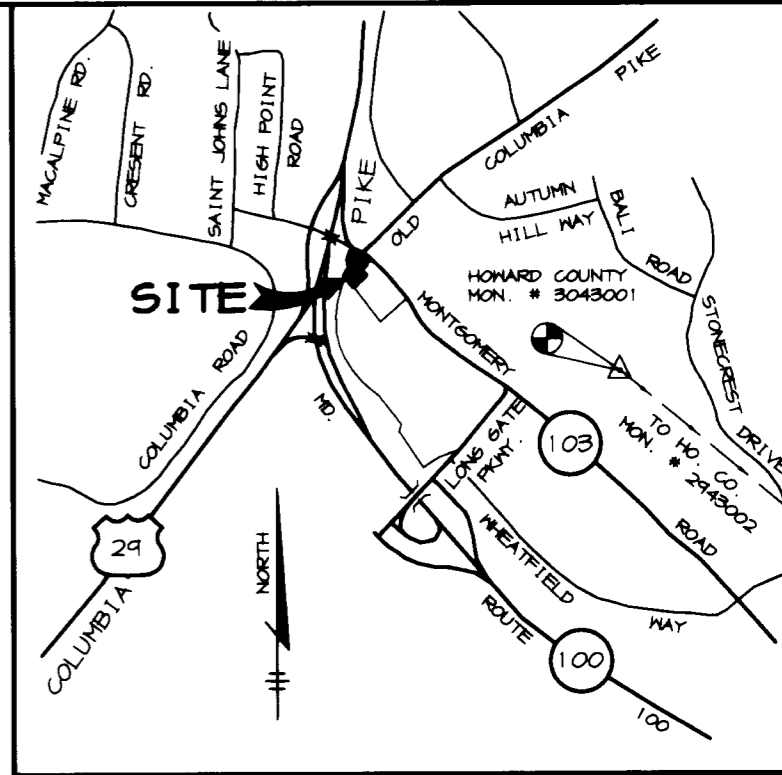
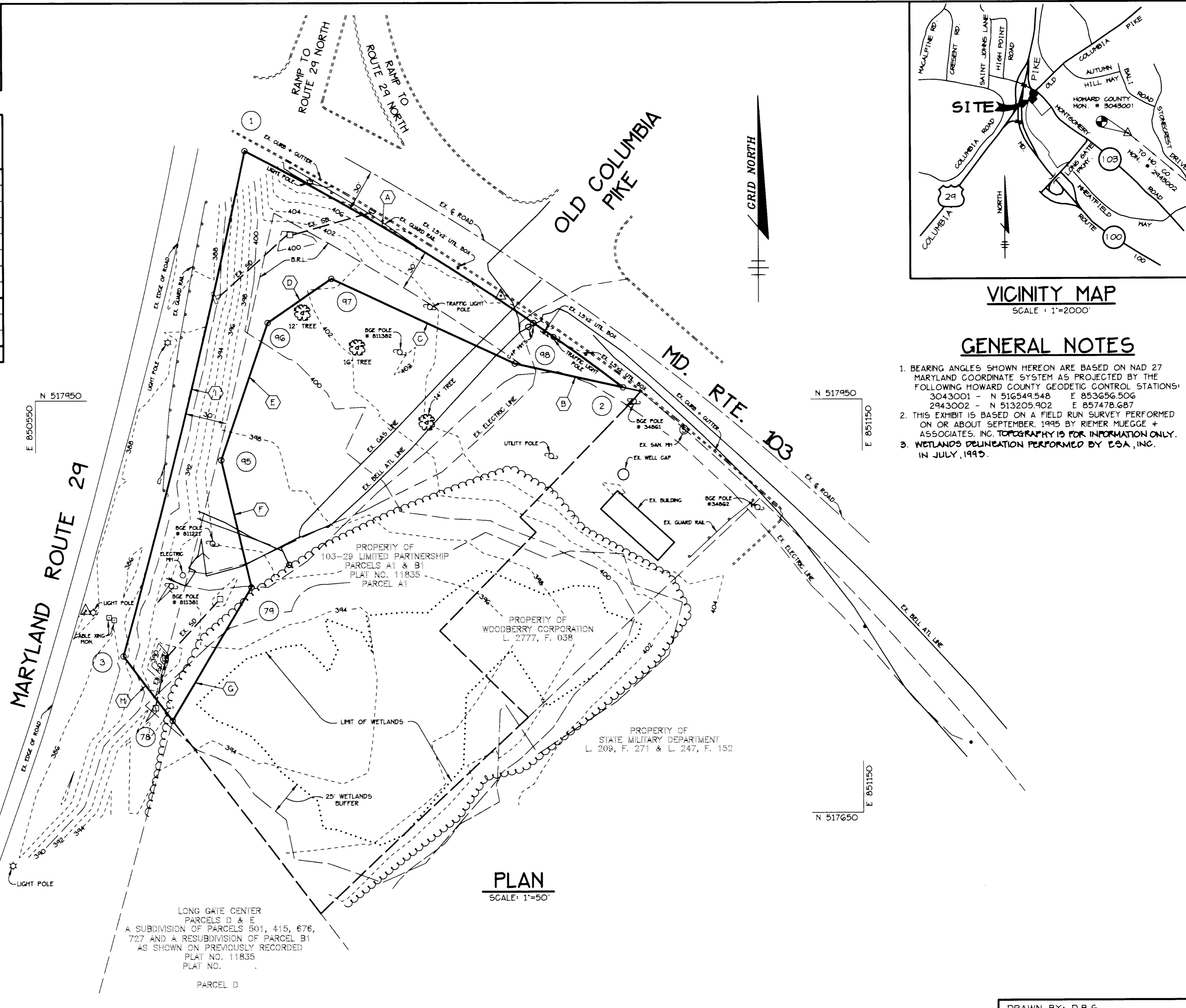
ITEM 'A'
TAX MAP 24, PARCEL 000
STATE HIGHWAY ADMINISTRATION
(PLAT NO. 5 51136 THRU 51138)

LINE	DIRECTION	DISTANCE
B	N 77°33'50" W	80.25'
C	N 64°57'45" W	146.49'
D	S 55°23'43" W	56.17'
E	S 18°50'51" W	105.18'
F	S 13°04'37" E	94.90'
G	S 30°47'15" W	112.23'
H	N 37°16'34" W	58.56'

CURVE	RADIUS	LENGTH	CHORD
A	1818.27'	323.43'	S 57°52'49" E, 323.01'
J	6000.00'	376.92'	N 13°41'13" E, 376.86'

AREA=30.039 sq. ft. OR 0.690 Ac.

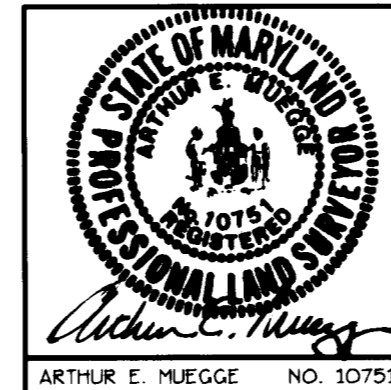
COORDINATE LIST		
NO.	NORTH	EAST
1	518130.861	850702.314
2	517959.121	850975.882
3	517764.703	850613.142
78	517718.106	850648.609
79	517814.519	850706.055
95	517906.958	850684.609
96	518006.499	850718.561
97	518038.398	850764.794
98	517976.402	850897.519



GENERAL NOTES

- BEARING ANGLES SHOWN HEREON ARE BASED ON NAD 27 MARYLAND COORDINATE SYSTEM AS PROJECTED BY THE FOLLOWING HOWARD COUNTY GEODETIC CONTROL STATIONS:
3043001 - N 516549.548 E 853656.506
2943002 - N 513205.902 E 857478.687
- THIS EXHIBIT IS BASED ON A FIELD RUN SURVEY PERFORMED ON OR ABOUT SEPTEMBER, 1995 BY RIEMER MUEGGE + ASSOCIATES, INC. TOPOGRAPHY IS FOR INFORMATION ONLY.
- WETLANDS DELINEATION PERFORMED BY ESA, INC. IN JULY, 1995.

RIEMER MUEGGE & ASSOCIATES, INC.
Planners • Engineers • Surveyors
8818 Centre Park Drive • Suite 200 • Columbia, MD 21045
410-997-8900 FAX: 410-997-9282
M:\PROJECT\SURVEY2\104201\EXHIBIT.DWG



HOWARD COUNTY DEPARTMENT OF PUBLIC WORKS
**EXHIBIT FOR
PROPERTY TRANSFER
2nd ELECTION DISTRICT
FIREHOUSE**
2nd ELECTION DISTRICT, HOWARD COUNTY, MARYLAND

DRAWN BY: D.B.S.
CHECKED BY: L.J.D.
PLAT NO.
CAP. PROJ. NO.
SCALE: AS SHOWN
DATE: 12-14-95