

CURRENT DATA				
NO.	RAD.	A.L.	TANGENT	CHORD BEARING & DISTANCE
12-13	955.00'	279.20'	140.60'	16° 45' 03" N 48° 52' 16" W, 278.21'

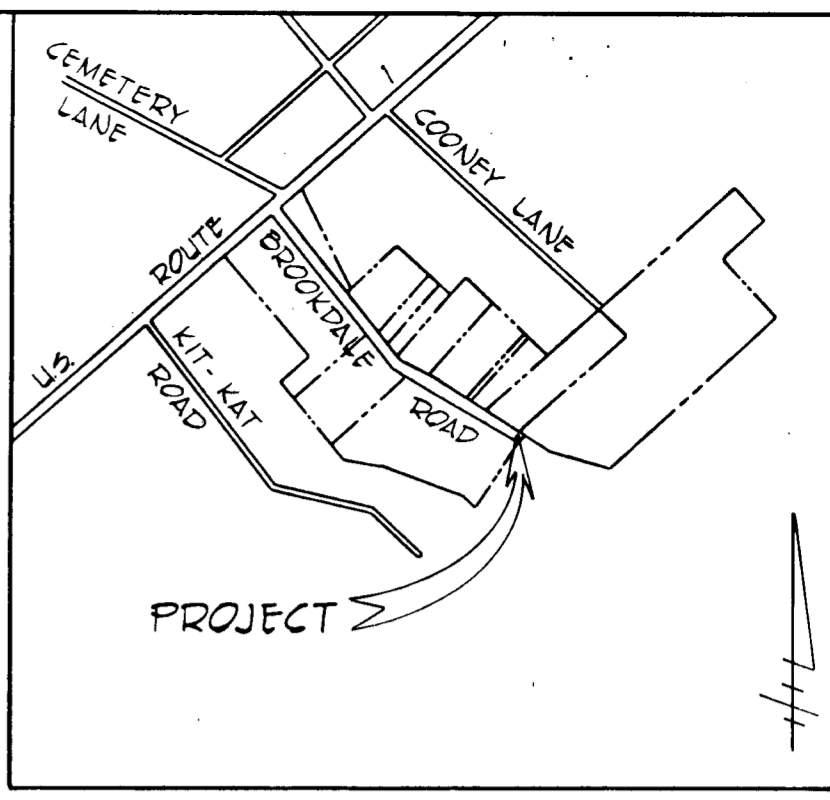
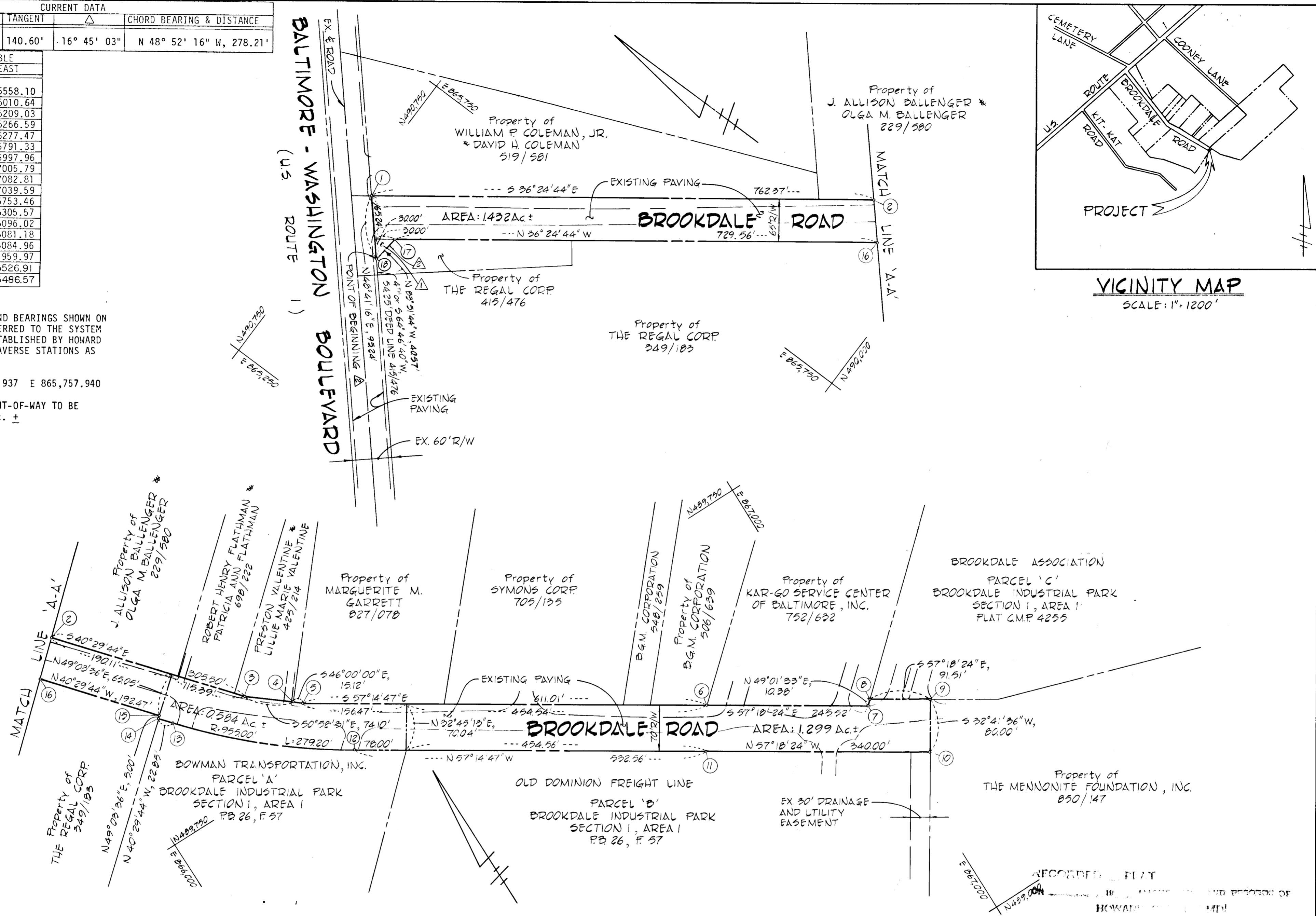
COORDINATE TABLE		
NO.	NORTH	EAST
1	490729.62	865558.10
2	490116.11	866010.64
3	489883.79	866209.03
4	489837.13	866266.59
5	489826.63	866277.47
6	489496.06	866791.33
7	489363.44	866997.96
8	489370.25	867005.79
9	489320.82	867082.81
10	489253.49	867039.59
11	489437.14	866753.46
12	489725.27	866305.57
13	489908.26	866096.02
14	489925.64	866081.18
15	489928.92	866084.96
16	490075.28	865959.97
17	490662.41	865526.91
18	490666.74	865486.57

GENERAL NOTES:

1.) THE COORDINATES AND BEARINGS SHOWN ON THIS PLAT ARE REFERRED TO THE SYSTEM OF COORDINATES ESTABLISHED BY HOWARD COUNTY CONTROL TRAVERSE STATIONS AS FOLLOWS:

#2345002 R N 490,905.937 E 865,757.940

2.) TOTAL AREA OF RIGHT-OF-WAY TO BE ACQUIRED: 3.314 Ac. ±



**RENEAL B. CARTER** L.S. #10704  
 PREPARED BY:  
**FISHER, COLLINS AND CARTER, INC.**  
 CIVIL ENGINEERS AND LAND SURVEYORS  
 8388 COURT AVENUE  
 ELLICOTT CITY, MARYLAND 21043

**LEGEND**

COMPUTED BY: A.M.V.  
 DRAWN BY: A.M.V.  
 CHECKED BY: R.B.C.

**REVISIONS**

△ - REVISE R/W LINE FOR AREA TO BE ACQUIRED FROM THE REGAL CORPORATION: 3-8-84  
 ▽ - REVISE R/W LINE TO 30' FILLET: 4-12-84

**APPROVED: BUREAU OF ENGINEERING**

*William E. Reid* 12/13/83  
 CHIEF - BUREAU OF ENGINEERING DATE

*Elizabeth Calie* 12/8/83  
 CHIEF - ROADS, BRIDGES & STORM DRAINAGE

**APPROVED: LAND ACQUISITION**

*Richard D. ...* 12/13/83  
 CHIEF - LAND ACQUISITION DATE

**HOWARD COUNTY, MARYLAND**  
 DEPARTMENT OF PUBLIC WORKS  
 BUREAU OF ENGINEERING

RIGHT-OF-WAY PROJECT: LAND ACQUISITION FOR "BROOKDALE ROAD"  
 RIGHT-OF-WAY PROJECT No. J-4081  
 DATE: 12-14-83

SCALE: 1" = 100'

*Mark ...*  
 DIRECTOR - DEPARTMENT OF PUBLIC WORKS

PLAT No. J-4081-1