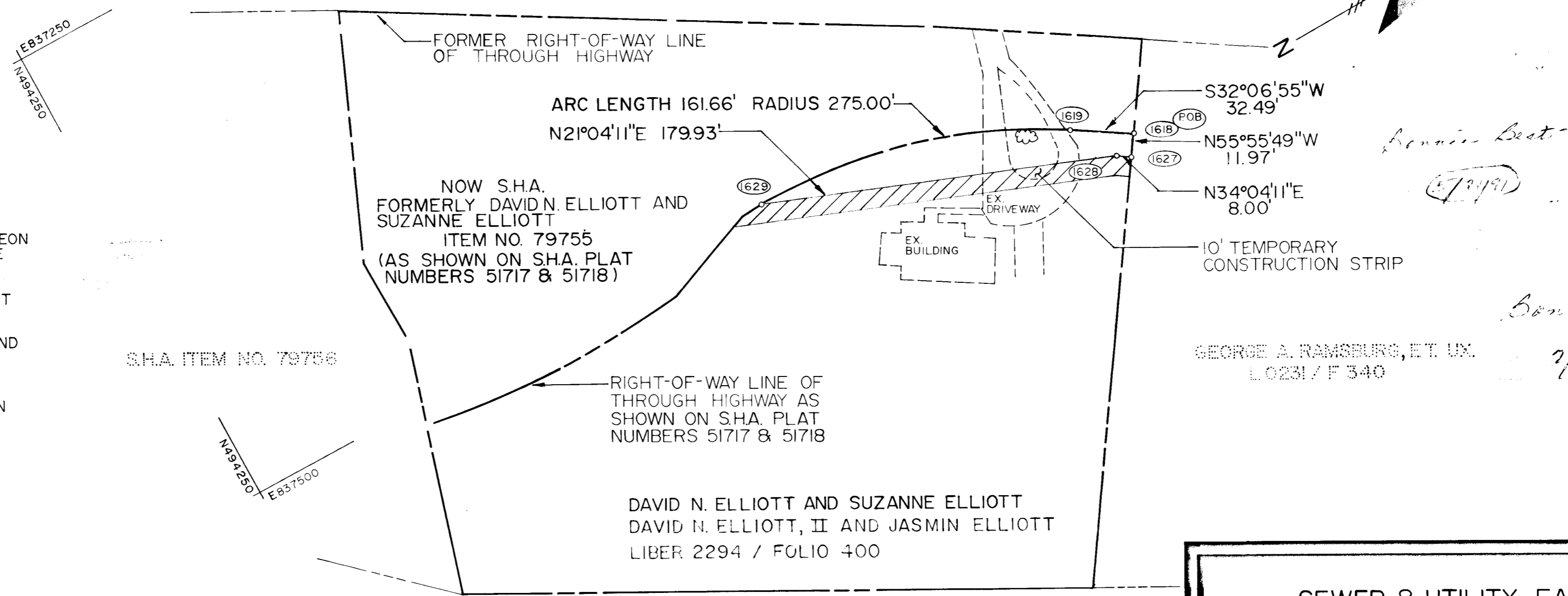
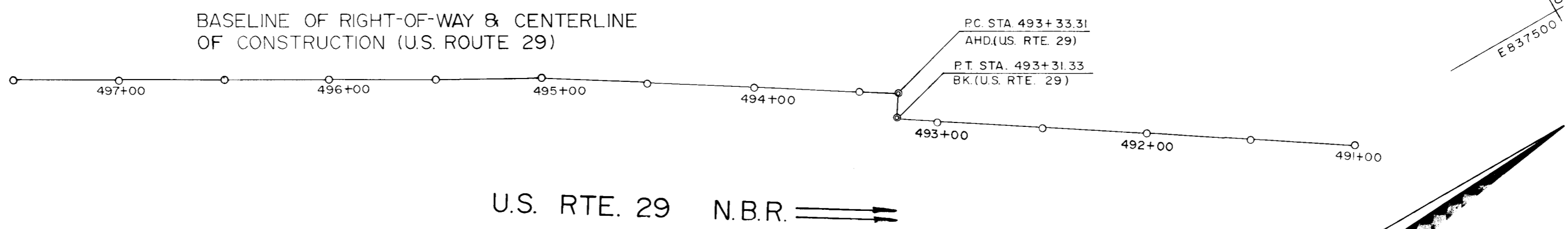


CURVE TABLE						COORDINATE TABLE		
NO.	RADIUS	DELTA	ARC	TAN	CHORD BR. DIST.	NO.	NORTH	EAST
1619-1629	275.00	33°40'52"	161.66'	83.24	S 15°16'29" W 159.34	1618	494724.942	837554.020
						1619	494697.423	837536.748
						1620	494551.227	837769.667
						1627	494718.236	837563.936
						1628	494711.609	837559.454
						1629	494543.712	837494.770

TO WASHINGTON D.C. ←      → ELLICOTT CITY



**NOTES**

COORDINATES AND BEARINGS SHOWN HEREON ARE BASED ON MARYLAND STATE PLANE COORDINATE SYSTEM.

THIS PLAT HAS BEEN PREPARED WITHOUT THE BENEFIT OF A TRANSIT AND CHAIN BOUNDARY SURVEY. IT IS INTENDED FOR USE IN EASEMENT ACQUISITION ONLY, AND IS NOT FOR USE IN DETERMINING PROPERTY LINES.

EXISTING DRIVE AND BUILDING BASED ON MSHA PLAT # 51717

**LEGEND**

- ANGLE BREAK
- ▭ SEWER & UTILITY EASEMENT (AREA = 0.068 Ac. OR 2943.39 sq ft)
- ▨ TEMPORARY CONSTRUCTION STRIP

**SEWER & UTILITY EASEMENT**

ELLIOTT PROPERTY  
SHAKER DRIVE

PROJ. NO: S-6149      PLAT NO: S-6149-03  
6TH ELECTION DISTRICT      HOWARD COUNTY, MD.

**JOHN E. HARMS JR. AND ASSOCIATES INC.**

CONSULTING ENGINEERS - PLANNERS - SURVEYORS

1 CENTRE PARK COLUMBIA, MARYLAND      8808 CENTRE PARK DRIVE 21045      SUITE 110 TELEPHONE (301) 740-5200

APPROVED: LAND ACQUISITION  
*[Signature]*  
DATE

APPROVED: BUREAU OF ENGINEERING  
*[Signature]*  
DATE 2-20-91

NO.	REVISION	BY	DATE

DESIGNED BY: D.M.

DRAWN BY: L.E.W.

CHECKED BY: W.H.N.

DATE: JANUARY 31, 1991

SCALE: 1" = 50'

W.O. NO. 02-89-004A