

7366

COORDINATE TABLE

STATION	NORTH	EAST
0+00	505905.01	807100.84
0+07.99	505902.89	807093.14
PC. 0+10.00	505902.36	807091.20
P.I. CURVE NO. 1	505875.21	806992.58
P.T. 2+11.16	505893.36	806891.91
PC. 2+84.25	505906.33	806819.98
P.I. CURVE NO. 2	505930.00	806688.75
P.R.C. 5+49.96	505957.55	806555.90
P.I. CURVE NO. 3	506013.50	806485.50
P.R.C. 7+22.06	506028.59	806400.44

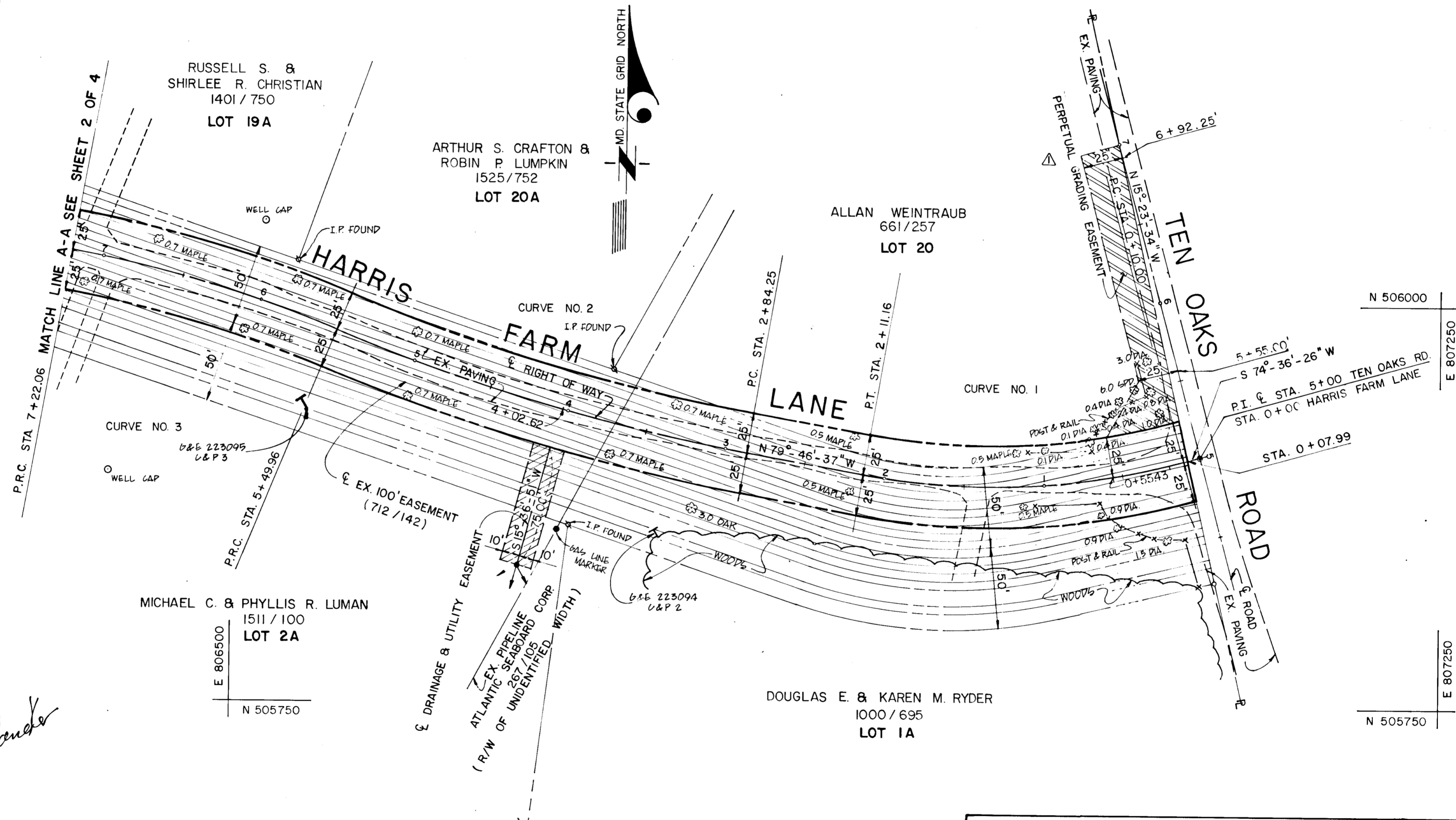
CURVE DATA

CURVE NO.	Δ	R	L	T	CHORD
1	25°-36'-57"	449.94'	201.16'	102.29'	S 87°-24'-55" W 199.49'
2	12°-06'-40"	1257.01'	265.71'	133.35'	N 73°-43'-17" W 265.21'
3	12°-16'-37"	803.18'	172.10'	86.38'	N 73°-48'-15" W 171.77'

NOTE:

COORDINATES SHOWN HEREON ARE BASED ON HOWARD COUNTY GEODETIC CONTROL STATIONS 2635004 & 2735001

STATE DEPT. OF ASSESSMENTS & TAXATION
 HOWARD COUNTY
 RECEIVED BY: *Karen Probit*
 DATE: 8-21-87 PLAT:



LEGEND	NO	BY	REVISIONS	DATE	APPROVED:
[Symbol] FEE SIMPLE ACQUISITION					BUREAU OF ENGINEERING
[Symbol] DRAINAGE & UTILITY EASEMENT	Δ	Y.P.	REVISED FEE SIMPLE AREA - ADDED PERPETUAL GRADING-EASEMENT.	6-4-87	<i>William E. Riden</i> CHIEF - BUREAU OF ENGINEERING 6-1-87 DATE
[Symbol] PERPETUAL GRADING EASEMENT					<i>Andrew M. Daniels</i> CHIEF - SURVEY & DRAFTING DIV. 5-19-87 DATE
[Symbol] PERPETUAL EASEMENT TO DISCHARGE FLOW OF WATER UPON EXISTING GROUND					<i>Rickard J. Hall</i> CHIEF - LAND ACQUISITION 6/1/87 DATE
COMPUTED BY: A.M.D.					
DRAWN BY: Y.P.					
CHECKED BY: W.H. / A.M.D.					

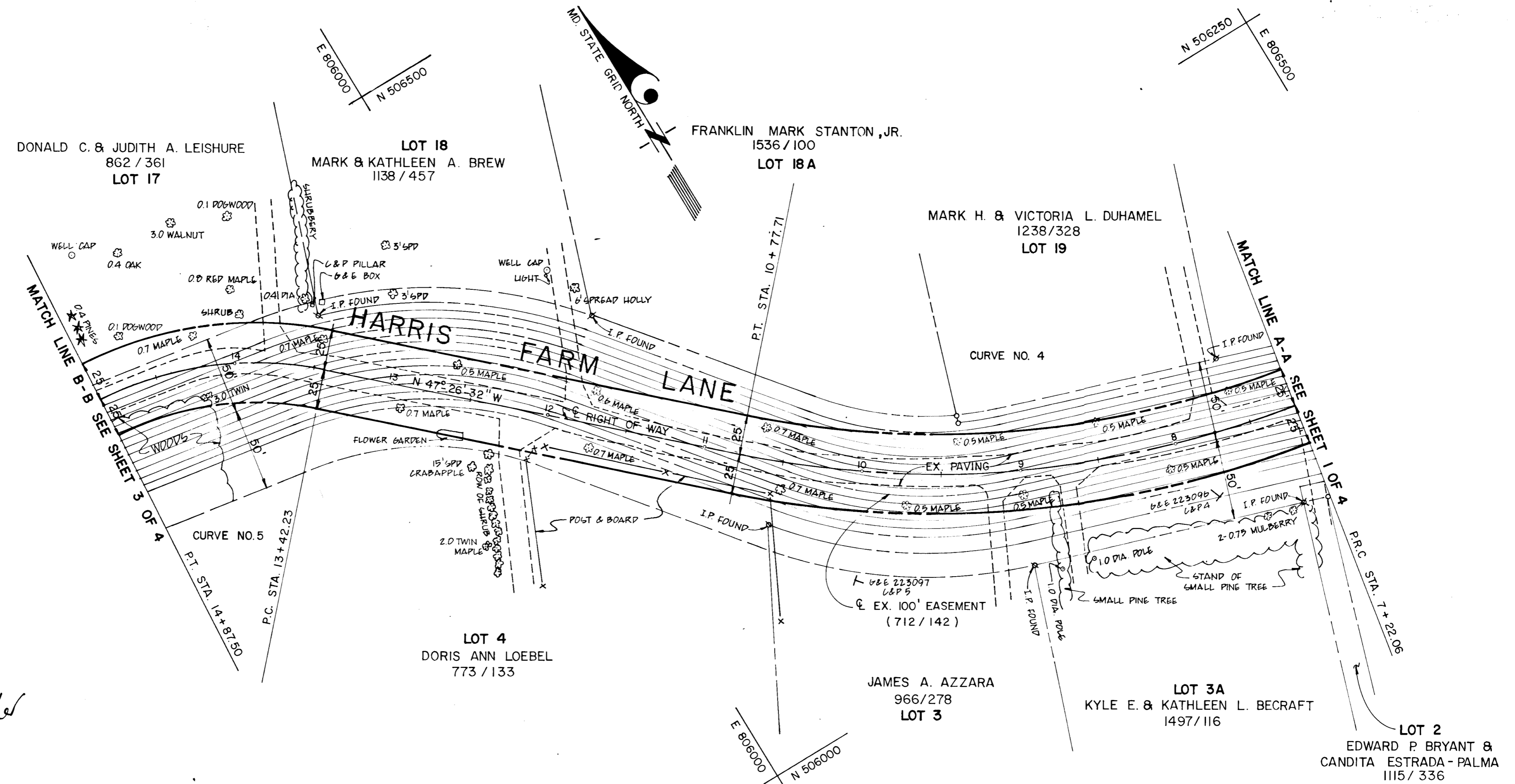
HOWARD COUNTY, MARYLAND
 DEPARTMENT OF PUBLIC WORKS
 BUREAU OF ENGINEERING
 SURVEY AND DRAFTING DIVISION
 HARRIS FARM LANE
 FIFTH ELECTION DISTRICT, HOWARD COUNTY, MARYLAND
 PROJECT NO: J-4078-GG
 DATE: 4-24-87
 SCALE: 1" = 50'
 SHEET 1 OF 4
 DIRECTOR-DEPARTMENT OF PUBLIC WORKS
 PLAT NO: J-4078-GG-1

COORDINATE TABLE			CURVE DATA					
STATION	NORTH	EAST	CURVE NO.	Δ	R	L	T	CHORD
P.R.C 7 + 22.06	506028.59	806400.44	4	32°-30'-02"	626.98'	355.65'	182.75'	N 63°-41'-33" W - 350.90'
P.I. CURVE NO. 4	506060.50	806220.50	5	37°-50'-05"	220.00'	145.27'	75.40'	N 66°-21'-35" W - 142.65'
P.T. 10 + 77.71	506184.10	806085.88						
P.C. 13 + 42.23	506363.01	805891.04						
P.I. CURVE NO. 5	506414.00	805835.50						
P.T. 14 + 87.50	506420.21	805760.36						

PLAT. C.M.P. NO. 17361
 APR 21 1987

STATE DEPT. OF ASSESSMENTS & TAXATION
 HOWARD COUNTY
Karen Bria
 RECEIVED BY:
 DATE: 8-21-87 PLAT:

NOTE:
 COORDINATES SHOWN HEREON ARE BASED ON
 HOWARD COUNTY GEODETIC CONTROL STATIONS
 2635004 & 2735001



LEGEND	REVISIONS
<p>--- FEE SIMPLE ACQUISITION</p>	
<p>COMPUTED BY: A.M.D. DRAWN BY: Y.P. CHECKED BY: W.H. / A.M.D.</p>	

APPROVED: BUREAU OF ENGINEERING	
<i>Michael J. Daniels</i>	6-1-87
CHIEF - BUREAU OF ENGINEERING	DATE
<i>Andrew M. Daniels</i>	5-19-87
CHIEF - SURVEY & DRAFTING DIV.	DATE
APPROVED: LAND ACQUISITION	
<i>Michael M. Hall</i>	6/1/87
CHIEF - LAND ACQUISITION	DATE

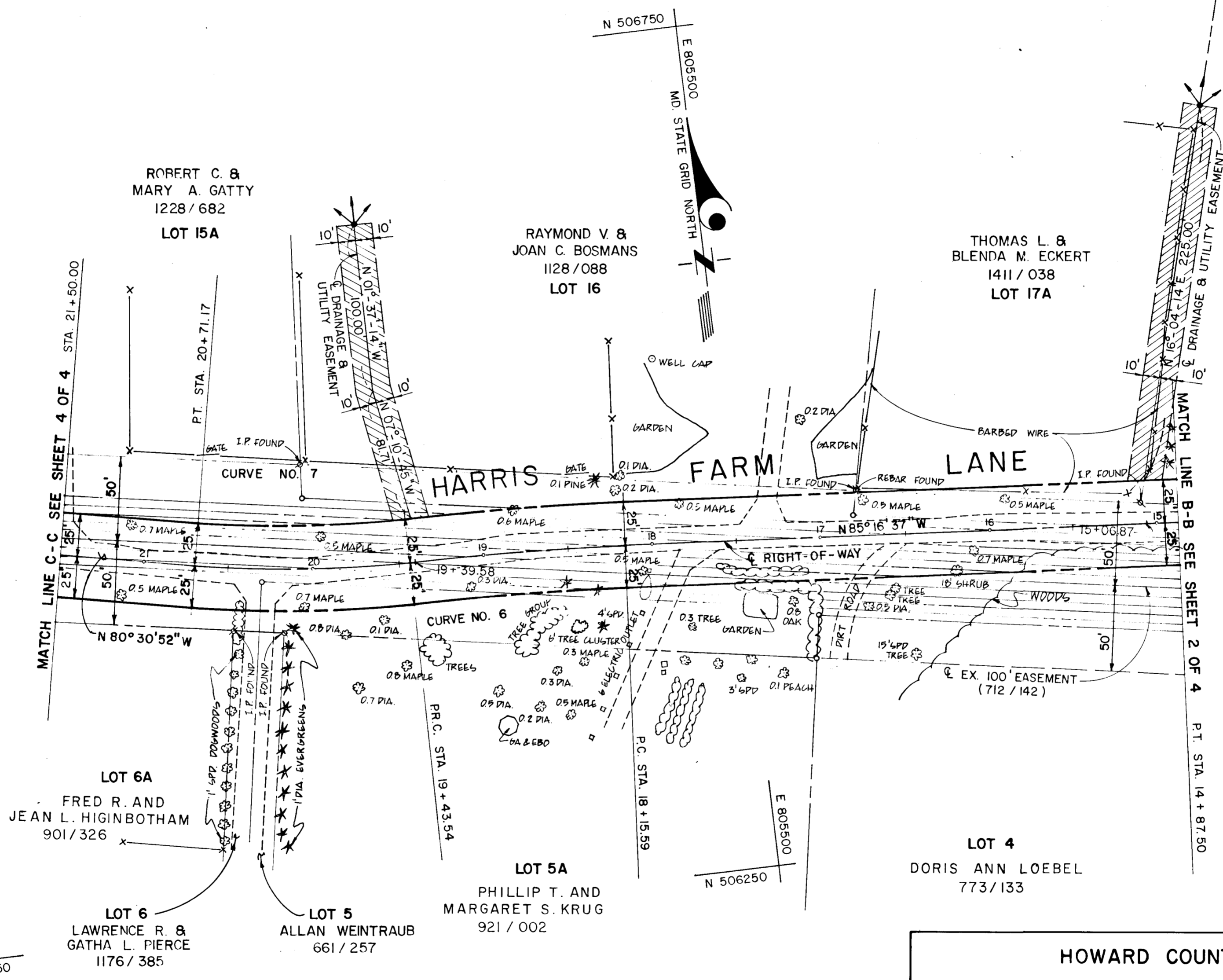
HOWARD COUNTY, MARYLAND
 DEPARTMENT OF PUBLIC WORKS
 BUREAU OF ENGINEERING
 SURVEY AND DRAFTING DIVISION

HARRIS FARM LANE
 RIGHT OF WAY PROJECT: FIFTH ELECTION DISTRICT, HOWARD COUNTY, MARYLAND
 PROJECT NO: J-4078-GG
 DATE: 4-24-87
 SCALE: 1" = 50'
 SHEET 2 OF 4
 DIRECTOR - DEPARTMENT OF PUBLIC WORKS: *Yusef Nemej* 6-1-87
 PLAT NO: J-4078-GG-2

COORDINATE TABLE			CURVE DATA					
STATION	NORTH	EAST	CURVE No.	Δ	R	L	T	CHORD
P.T. 14+87.50	506420.21	805760.36	6	4° 03' 06"	1809.33'	127.95'	64.00'	N 87° 18' 10" W-127.92'
P.C. 18+15.59	506447.23	805433.28	7	10° 44' 25"	680.84'	127.63'	64.00'	N 83° 57' 30" W-127.44'
P.I. CURVE No. 6	506452.50	805369.50						
P.R.C. 19+43.64	506453.25	805305.50						
P.I. CURVE No. 7	506454.00	805241.50						
P.T. 20+71.27	506466.66	805178.77						

NOTE:
 COORDINATES SHOWN HEREON ARE BASED ON
 HOWARD COUNTY GEODETIC CONTROL STATIONS
 2635004 & 2735001

STATE DEPT. OF ASSESSMENTS & TAXATION
 HOWARD COUNTY
Karen Price
 RECEIVED BY
 DATE: 8-21-87 PLAT:



DONALD C. & JUDITH A. LEISHURE
 862 / 361
 LOT 17



LEGEND	REVISIONS	APPROVED: BUREAU OF ENGINEERING
<p>--- FEE SIMPLE ACQUISITION</p> <p>/// DRAINAGE & UTILITY EASEMENT</p> <p>← PERPETUAL EASEMENT TO DISCHARGE FLOW OF WATER UPON EXISTING GROUND</p>		<p><i>William E. ...</i> 6-1-87 CHIEF - BUREAU OF ENGINEERING DATE</p> <p><i>Andrew M. ...</i> 5-19-87 CHIEF - SURVEY & DRAFTING DIV. DATE</p>
<p>COMPUTED BY: A.M.D.</p> <p>DRAWN BY: Y.P.</p> <p>CHECKED BY: W.M.H. / A.M.D.</p>		<p>APPROVED: LAND ACQUISITION</p> <p><i>Richard M. Hall</i> 6/1/87 CHIEF - LAND ACQUISITION DATE</p>

HOWARD COUNTY, MARYLAND
 DEPARTMENT OF PUBLIC WORKS
 BUREAU OF ENGINEERING
 SURVEY AND DRAFTING DIVISION

HARRIS FARM LANE
 RIGHT OF WAY PROJECT: FIFTH ELECTION DISTRICT, HOWARD COUNTY, MARYLAND
 PROJECT NO: J-4078-GG
 DATE: 4-24-87
 SCALE: 1" = 50'
 SHEET 3 OF 4
 PLAT NO: J-4078-GG-3

James F. ... 6-1-87
 DIRECTOR-DEPARTMENT OF PUBLIC WORKS

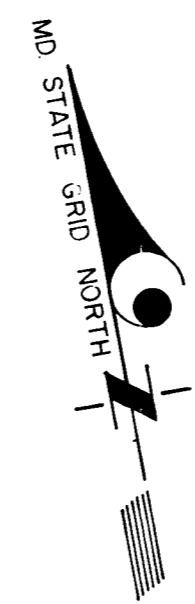
COORDINATE TABLE

STATION	NORTH	EAST
27 + 80.56	506607.00	804483.50

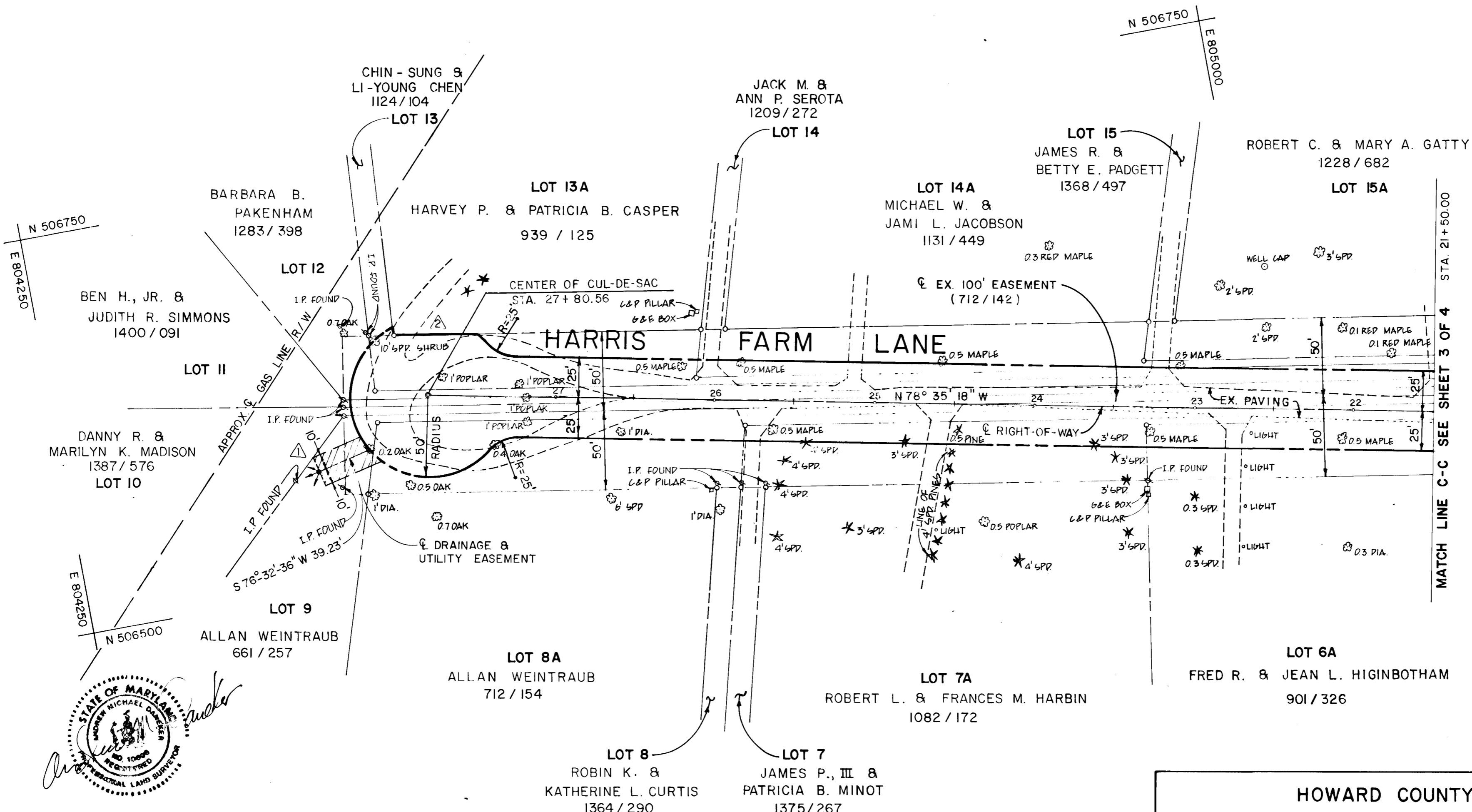
NOTE: COORDINATES SHOWN HEREON ARE BASED ON HOWARD COUNTY GEODETIC CONTROL STATIONS 2635004 & 2735001

PLAT CAMP. NO. 7369

FILED AUG 21 1987



STATE DEPT. OF ASSESSMENTS & TAXATION
 HOWARD COUNTY
 RECEIVED BY: *Karen Ovi*
 DATE: 8-21-87 PLAT:



LEGEND	NO.	BY	REVISIONS	DATE
FEE SIMPLE ACQUISITION	1	Y.P.	REVISED DRAINAGE & UTILITY EASEMENT	7-22-87
DRAINAGE & UTILITY EASEMENT	2	Y.P.	REDESIGN CUL-DE-SAC AT LOT 13A	8-13-87
PERPETUAL EASEMENT TO DISCHARGE FLOW OF WATER UPON EXISTING GROUND				

APPROVED: BUREAU OF ENGINEERING
William E. Reidy 6-1-87
 CHIEF - BUREAU OF ENGINEERING DATE
Andrew M. Dwyer 5-19-87
 CHIEF - SURVEY & DRAFTING DIV. DATE
 APPROVED: LAND ACQUISITION
Richard M. Hall 6/1/87
 CHIEF - LAND ACQUISITION DATE

COMPUTED BY: A.M.D.
 DRAWN BY: Y.P.
 CHECKED BY: W.M.H. / A.M.D.

HOWARD COUNTY, MARYLAND
 DEPARTMENT OF PUBLIC WORKS
 BUREAU OF ENGINEERING
 SURVEY AND DRAFTING DIVISION
 HARRIS FARM LANE
 RIGHT OF WAY PROJECT: FIFTH ELECTION DISTRICT, HOWARD COUNTY, MARYLAND
 PROJECT NO: J-4078-66
 DATE: 4-24-87
 SCALE: 1" = 50'
 SHEET 4 OF 4
 DIRECTOR-DEPARTMENT OF PUBLIC WORKS
 PLAT NO: J-4078-66-4