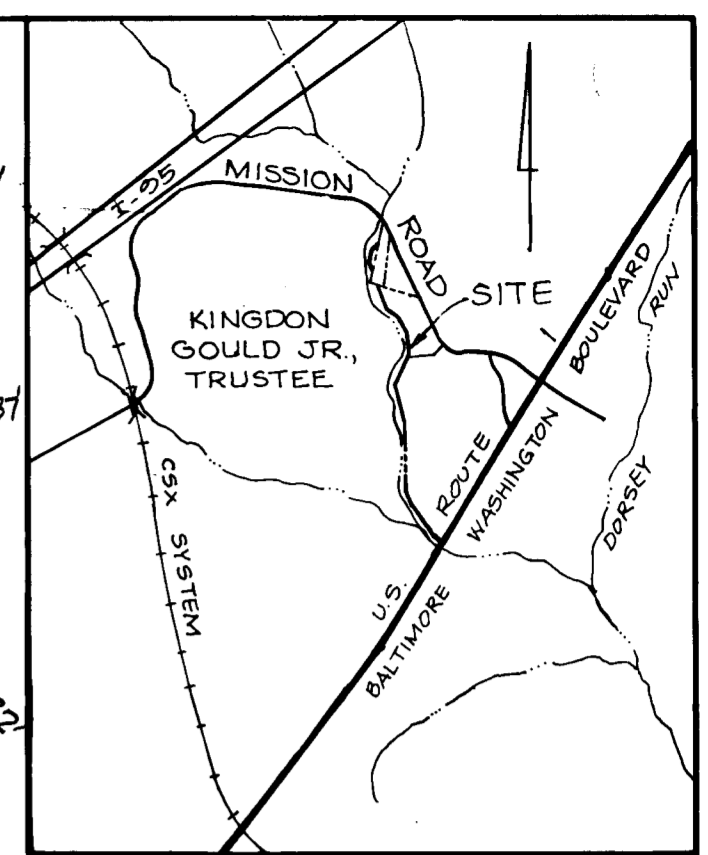
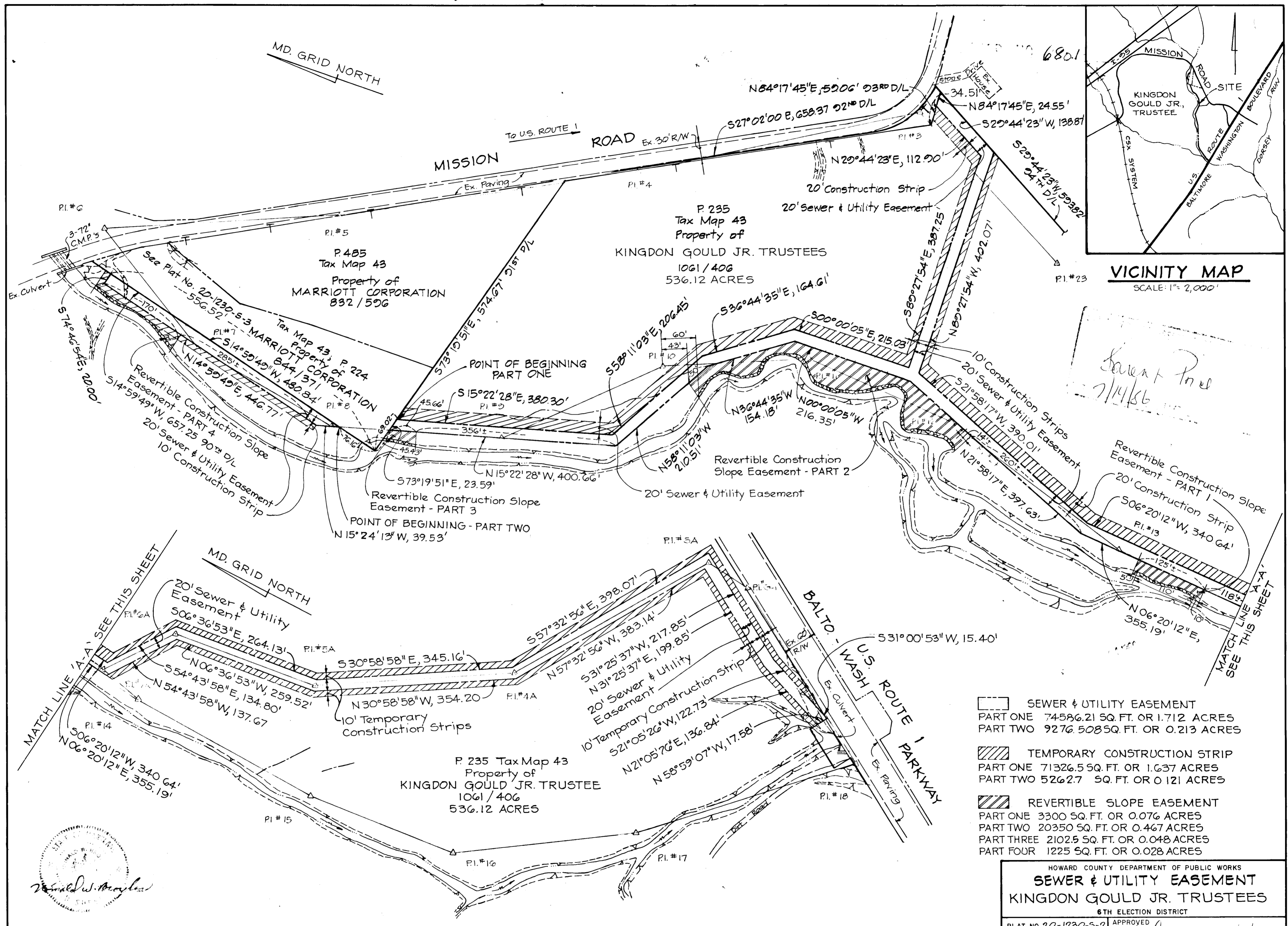




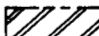
MD. GRID NORTH



VICINITY MAP
SCALE: 1" = 2,000'



*Sevent Pool
7/14/86*

-  SEWER & UTILITY EASEMENT
PART ONE 74586.21 SQ. FT. OR 1.712 ACRES
PART TWO 92765085 SQ. FT. OR 0.213 ACRES
-  TEMPORARY CONSTRUCTION STRIP
PART ONE 71326.5 SQ. FT. OR 1.637 ACRES
PART TWO 52627 SQ. FT. OR 0.121 ACRES
-  REVERTIBLE SLOPE EASEMENT
PART ONE 3300 SQ. FT. OR 0.076 ACRES
PART TWO 20350 SQ. FT. OR 0.467 ACRES
PART THREE 2102.5 SQ. FT. OR 0.048 ACRES
PART FOUR 1225 SQ. FT. OR 0.028 ACRES

HOWARD COUNTY DEPARTMENT OF PUBLIC WORKS
SEWER & UTILITY EASEMENT
KINGDON GOULD JR. TRUSTEES
6TH ELECTION DISTRICT

PLAT NO 20-1230-S-2	APPROVED
CAP. PROJ. S-6098	LAND ACQUISITION
SCALE: 1" = 100'	<i>Richard M. Hall</i> 7/7/86
REV: MAY 8, 1986	DATE
REV: APRIL 25, 1986	BUREAU OF ENGINEERING
DATE: JULY 24, 1984	<i>Richard M. Hall</i> 7/3/86
	DATE

KIDDE CONSULTANTS, INC.
CONSULTING ENGINEERS
BALTIMORE, MARYLAND

