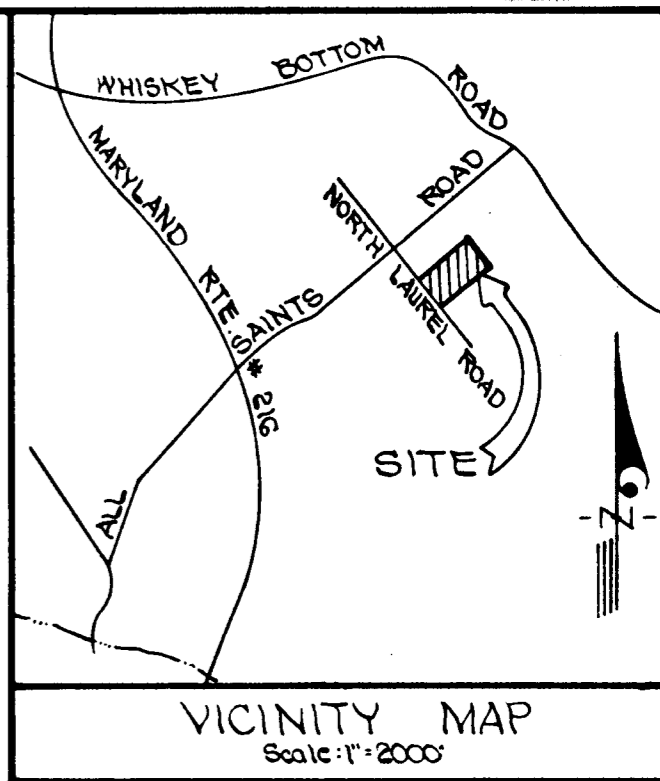
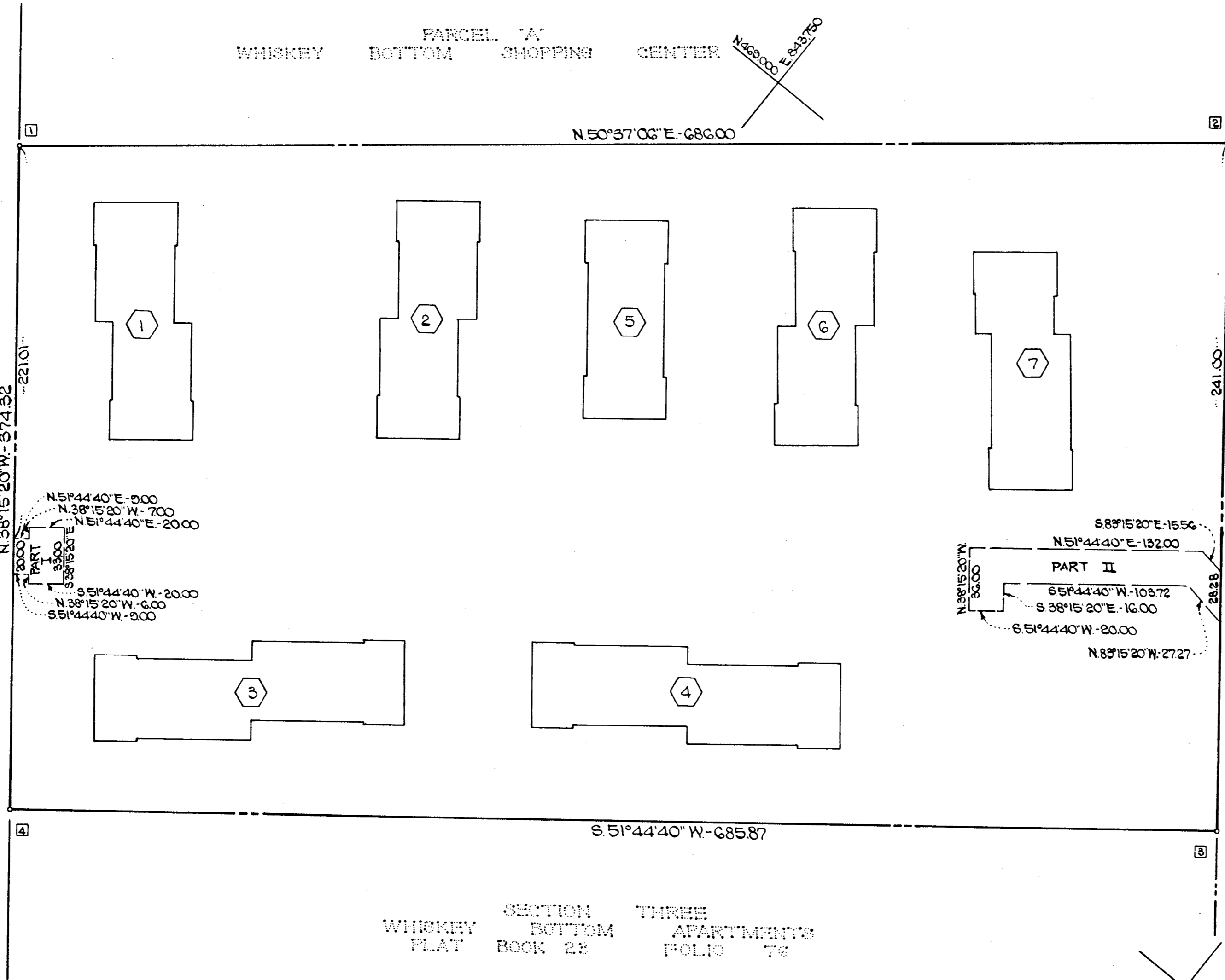


NORTH LAUREL ROAD



COORDINATE TABLE		
NO.	NORTH	EAST
1	468,609.74	843,430.01
2	469,134.02	843,969.29
3	468,830.37	844,209.36
4	468,405.78	843,670.74

SECTION FOUR - AREA TWO  
PARCEL - BOTTOM  
WHISKEY BOTTOM APARTMENTS  
PLAT NO. 5412

SECTION THREE  
WHISKEY BOTTOM APARTMENTS  
PLAT BOOK 28 FOLIO 76

**OWNER'S DEDICATION STATEMENT**  
The undersigned, owners of the property shown hereon, grants unto Howard County, Maryland, its successors and assigns the right to lay, construct, and maintain sewers, drains, water pipes and other municipal utilities and services in and through the specific easement areas shown hereon. Where specific lots shall be burdened with the right of way shown hereon, it is agreed that no building or similar structures of any kind shall be erected in, on or over said right of way by the grantors, their successors and assigns, or Howard County, Maryland.

WHISKEY BOTTOM SQUARE LIMITED PARTNERSHIP  
By: *William F. Maday, Jr.*  
GENERAL PARTNER  
Attest: *William F. Maday, Jr.*  
MANAGING PARTNER

STATE DEPT. OF ASSESSMENT & TAXATION  
HOWARD COUNTY  
*Cheryl A. Lopez*  
RECEIVED BY  
DATE: 11-23/83 PLAT: 5666

**APPROVAL STATEMENT**  
Utility Easements approved and accepted by Howard County Department of Public Works.

By: *William E. Riley*  
Chief, Bureau of Engineering  
Department of Public Works

Professional Land Surveyor  
By: *Peter P. Kontgias*  
PETER P. KONTGIAS  
Registered Land Surveyor, Md #10819

Recorded in Plat Book \_\_\_\_\_, on \_\_\_\_\_, 19\_\_ Among the Land Records of Howard County, Maryland.

PLAT FOR GRANTING OF EASEMENTS FOR WATER & FIRE HYDRANTS TO HOWARD COUNTY, MARYLAND  
**PARCEL "A"**  
**WHISKEY BOTTOM SQUARE APARTMENTS**  
PLAT NO. 44-1016-D-W-1  
SIXTH ELECTION DISTRICT  
TAX MAP 47  
HOWARD COUNTY, MARYLAND  
FEBRUARY, 1983 SCALE: 1"=50'

