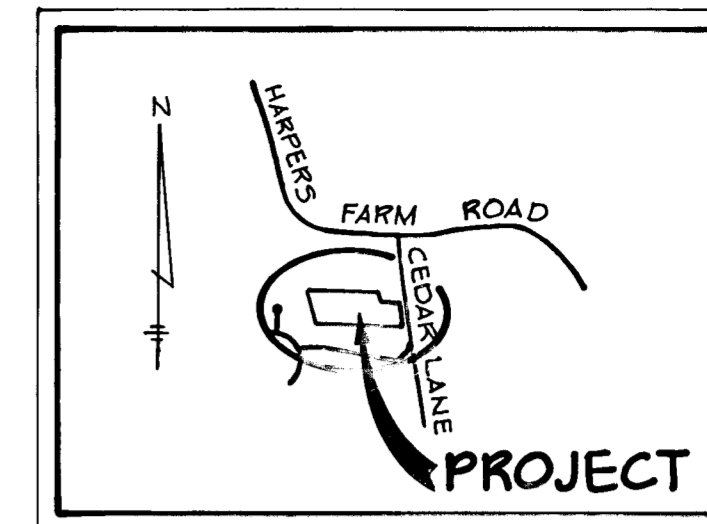


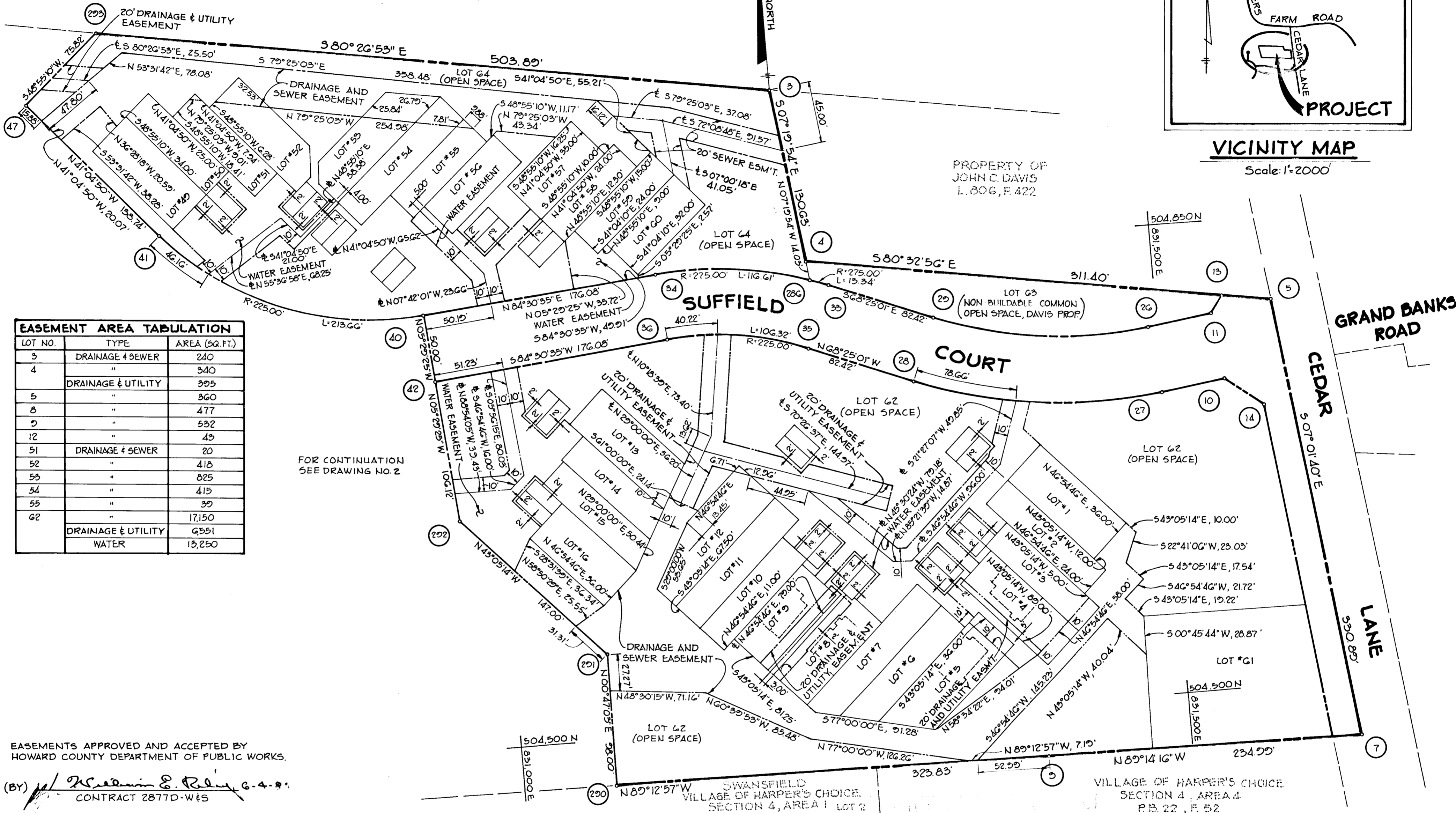
VILLAGE OF HARPER'S CHOICE
SECTION 5, AREA 3
PB 18, P 24.



VICINITY MAP

Scale: 1"=2000

PROPERTY OF
JOHN C. DAVIS
L. 806, F. 422



EASEMENT AREA TABULATION		
LOT NO.	TYPE	AREA (SQ. FT.)
3	DRAINAGE & SEWER	240
4	"	340
	DRAINAGE & UTILITY	395
5	"	360
8	"	477
9	"	532
12	"	45
51	DRAINAGE & SEWER	20
52	"	418
53	"	825
54	"	415
55	"	30
62	"	17,150
	DRAINAGE & UTILITY	6551
	WATER	13,250

FOR CONTINUATION
SEE DRAWING NO. 2

EASEMENTS APPROVED AND ACCEPTED BY
HOWARD COUNTY DEPARTMENT OF PUBLIC WORKS.

(BY) *Walter Park* 6-4-82
CONTRACT 2877D-W&S

PROFESSIONAL LAND SURVEYOR

(BY) *Walter Park*
2/22/80
WALTER PARK
231 JOSEPH SQUARE
COLUMBIA, MARYLAND
21044



RECORDED AS PLAT NUMBER _____
ON _____ 19____, AMONG THE
LAND RECORDS OF HOWARD COUNTY, MARYLAND.

THE UNDERSIGNED OWNER OF THE PROPERTY SHOWN ON THIS PLAT GRANTS UNTO HOWARD COUNTY, MARYLAND, ITS SUCCESSORS AND ASSIGNS THE RIGHT TO LAY, CONSTRUCT AND MAINTAIN SEWERS, DRAINS, WATER PIPES AND OTHER MUNICIPAL UTILITIES AND SERVICES, IN AND THROUGH THE SPECIFIC EASEMENT AREA AND ROADS SHOWN HEREON. TO THE END THAT THE SPECIFIC LOTS SHALL BE THEREBY BURDENED WITH THE EASEMENTS SHOWN HEREON, AND IT IS AGREED THAT NO BUILDING OR SIMILAR STRUCTURES OF ANY KIND SHALL BE ERRECTED IN, ON OR OVER THE SAID EASEMENTS BY THE GRANTOR, ITS SUCCESSORS AND ASSIGNS, OR HOWARD COUNTY, MARYLAND.

Seal

(BY) *Michael B. Glick* 2-22-80
MICHAEL B. GLICK

SHEET 1 OF 2
5TH ELECTION DISTRICT OF HOWARD COUNTY, MARYLAND
SCALE: 1"=50'
DATE: 2-22-80

PLAT FOR GRANT OF EASEMENTS FOR
WATER, SEWER AND STORM DRAINS
TO HOWARD COUNTY, MARYLAND
SCARBOROUGH
LOTS 1 THRU 65

Prepared by: *Tracy & Associates, Inc.*
2039 Baltimore National Pike
Elkridge, Maryland 21027

MAY 23, 1980

VILLAGE OF HARPER'S CHOICE
SECTION 5, AREA 3
PB. 10, P. 24

PLAT-C.M.P. NO.

EASEMENT AREA TABULATION

NO.	TYPE	AREA (SQ. FT.)
17	DRAINAGE & SEWER	500
18	"	156
19	"	272
20	"	142
	DRAINAGE & UTILITY	565
21	"	501
	DRAINAGE & SEWER	423
22	"	64
25	"	361
26	"	343
27	"	320
28	"	573
	DRAINAGE & UTILITY	539
29	"	552
	DRAINAGE & SEWER	512
30	"	262
31	DRAINAGE & WATER	70
32	"	416
	DRAINAGE & SEWER	44
33	DRAINAGE & WATER	228
44	DRAINAGE & UTILITY	500
45	"	300
65	"	81,657
	WATER	14,000
	DRAINAGE & SEWER	33,191
	DRAINAGE & WATER	10,225
	SEWER	6,339

PROPERTY OF
PHILIP CARROLL
EPH. L.I.F. 118

EASEMENTS APPROVED AND ACCEPTED BY
HOWARD COUNTY DEPARTMENT OF PUBLIC WORKS
(BY) *Michael E. Ray* c.a. 80
CONTRACT ZB77D-W&S

PROFESSIONAL LAND SURVEYOR
(BY) *Walter Park*
WALTER PARK
231 JOSEPH SQUARE
COLUMBIA, MARYLAND 21044



THE UNDERSIGNED OWNER OF THE PROPERTY SHOWN ON THIS PLAT GRANTS UNTO HOWARD COUNTY, MARYLAND, ITS SUCCESSORS AND ASSIGNS THE RIGHT TO LAY, CONSTRUCT AND MAINTAIN SEWERS, DRAINS, WATER PIPES AND OTHER MUNICIPAL UTILITIES AND SERVICES, IN AND THROUGH THE SPECIFIC EASEMENT AREA AND ROADS SHOWN HEREON, TO THE END THAT THE SPECIFIC LOTS SHALL BE THEREBY BURDENED WITH THE EASEMENTS SHOWN HEREON, AND IT IS AGREED THAT NO BUILDING OR SIMILAR STRUCTURES OF ANY KIND SHALL BE ERRECTED IN, ON OR OVER THE SAID EASEMENTS BY THE GRANTOR, ITS SUCCESSORS AND ASSIGNS, OR HOWARD COUNTY, MARYLAND.

Karen L. Park
9/12/80 5279
PLAT FOR GRANT OF EASEMENTS FOR
WATER, SEWER AND STORM DRAINS
TO HOWARD COUNTY, MARYLAND
SCARBOROUGH
LOTS 1 THRU 65
Diener, Tracy & Associates, Inc.
8559 Baltimore National Pike
Glen Dale, Maryland 21042
(301) 761-7660

RECORDED AS PLAT NUMBER _____
ON _____ 19____, AMONG THE
LAND RECORDS OF HOWARD COUNTY, MARYLAND.

Michael Gluck 2-22-80
MICHAEL GLUCK

SHEET 2 OF 2
5TH ELECTORAL DISTRICT OF HOWARD COUNTY, MARYLAND
SCALE 1"=50'
DATE 2-22-80

MAY 29, 1980