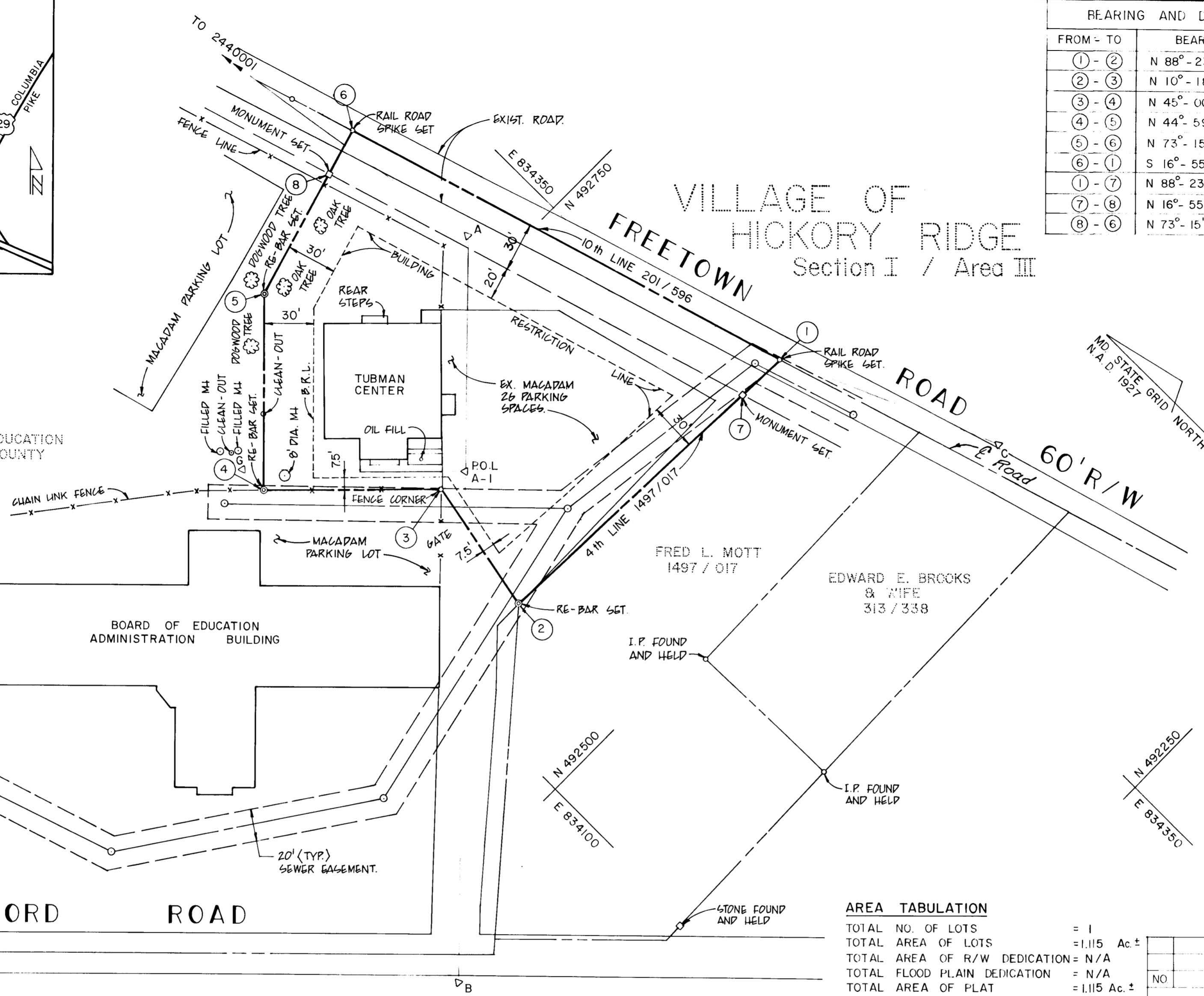


VICINITY MAP
SCALE: 1" = 2000'

THE BOARD OF EDUCATION
OF HOWARD COUNTY
201 / 596



BEARING AND DISTANCE TABLE		
FROM - TO	BEARING	DISTANCE
① - ②	N 88° - 23' - 33" W	217.10'
② - ③	N 10° - 18' - 13" E	84.87'
③ - ④	N 45° - 00' - 55" W	107.00'
④ - ⑤	N 44° - 59' - 11" E	120.00'
⑤ - ⑥	N 73° - 15' - 41" E	111.53'
⑥ - ①	S 16° - 55' - 30" E	295.00'
① - ⑦	N 88° - 23' - 33" W	31.64'
⑦ - ⑧	N 16° - 55' - 30" W	285.04'
⑧ - ⑥	N 73° - 15' - 44" E	30.00'

COORDINATE TABLE		
NO.	NORTH	EAST
①	492588.48	834381.67
②	492594.57	834164.66
③	492678.07	834179.84
④	492753.71	834104.16
⑤	492838.58	834188.99
⑥	492870.70	834295.79
⑦	492589.37	834350.04
⑧	492862.06	834267.06

NOTES :

- TITLE REF. PART OF 201 / 596
- COORDINATES SHOWN HEREON ARE BASED ON HOWARD COUNTY GEODETIC SURVEY MONUMENTS NO. 2440001 AND NO. 2439901
- REBARS SET ARE SHOWN THUS -⊙-
RAIL ROAD SPIKES ARE SHOWN THUS -○-
MONUMENT SET ARE SHOWN THUS -□-
TRAVERSE STATIONS ARE 3/8" REBARS ->

TRAVERSE COORDINATES		
STATION	NORTH	EAST
A	492775.24	834301.25
B	492458.36	833974.58
C	492456.66	834438.95
G	492771.38	834095.74
POL A-1	492675.37	834198.29

AREA TABULATION

TOTAL NO. OF LOTS	= 1
TOTAL AREA OF LOTS	= 1.115 Ac ±
TOTAL AREA OF R/W DEDICATION	= N/A
TOTAL FLOOD PLAIN DEDICATION	= N/A
TOTAL AREA OF PLAT	= 1.115 Ac ±

NO.	DESCRIPTION	BY	DATE
REVISIONS			

APPROVED: For public water and public sewerage.

HOWARD COUNTY HEALTH DEPARTMENT

Jason B. Du 10-1-87
HOWARD COUNTY HEALTH OFFICER DATE

APPROVED:

HOWARD COUNTY OFFICE OF PLANNING & ZONING

UmpAmin 10-19-87
DIRECTOR DATE

APPROVED: For storm drainage systems, public roads, public sewer, public water.

HOWARD COUNTY DEPARTMENT OF PUBLIC WORKS

Richard M. Hall 10/16/87
DIRECTOR DATE

OWNERS STATEMENT

I, *Ernie Todd* as representative acting for the Howard County Board of Education, owners of the property shown and described hereon, hereby adopt this plan of subdivision; and in consideration of the approval of this plat by the office of Planning and Zoning, establish the minimum building restriction lines. All easements or rights-of-way affecting the property, are included in this plan of subdivision. Witness my hand this 27th day of October, 1987.

Ernie Todd 10/27/87
NAME - TITLE DATE

Richard M. Hall 10/16/87
APPROVED - BUREAU OF ENGINEERING DATE

Jefferson D. Hobbs II 9-29-87
CHIEF BUREAU OF ENGINEERING DATE

Richard M. Hall 10/16/87
APPROVED - LAND ACQUISITION SECTION DATE

Richard M. Hall 10/16/87
CHIEF LAND ACQUISITION SECTION DATE

SURVEYORS CERTIFICATE

I hereby certify that the final plat - shown hereon is correct, that it is a minor subdivision of part of the lands conveyed by Louis M. Brown and Eva M. Brown his wife to the Board of Education of Howard County, Maryland. A Body Politic and Corporate by deed dated December 12, 1947, as recorded among the land records of Howard County, Maryland in Liber 201 Folio 596 and all property markers are set as - shown in accordance with the Annotated Code, of - Maryland, as amended.

Jefferson D. Hobbs II 9-29-87
PROPERTY LINE SURVEYOR MD. NO. 362 DATE

RECORDED AS PLAT NO. _____ ON _____ AMONG THE LAND RECORDS OF HOWARD COUNTY.

PLAT OF MINOR SUBDIVISION
HOWARD COUNTY BOARD OF EDUCATION
PLAT FOR
HOUSING FOR HOMELESS
EMERGENCY SHELTER
CAPITAL PROJECT NO. 0194

ELECTION DISTRICT NO. 5

HOWARD COUNTY DEPARTMENT OF PUBLIC WORKS
SURVEY / DRAFTING DIVISION
11226 ROUTE 216
LAUREL, MARYLAND 20707

SCALE: 1" = 50'
DATE: 9-29-87
CHECKED BY: J. D. H.

COMPUTED BY: J. O. S.
DRAWN BY: Y. P.
CHECKED BY: W. H. / J. O. S.

SHEET 1 OF 1