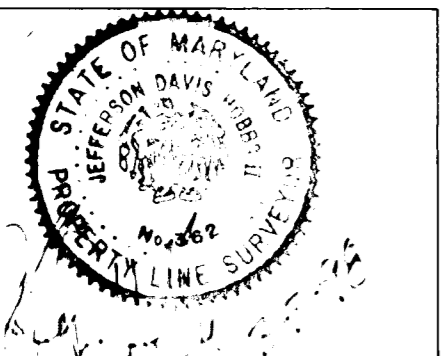


VICINITY MAP (NO SCALE)

CURVE TABLE					
NO.	DELTA	RADIUS	LENGTH	TANGENT	CHORD BEARING
C1	110°37'00"	25.00	48.27	36.12	N 80°45'47" E 41.11
C2	65°04'00"	25.00	28.39	15.95	N 07°04'43" W 26.89
C3	91°05'00"	25.00	39.74	25.48	N 85°09'13" W 35.69

LINE TABLE		
LINE	LENGTH	BEARING
L1	25.00	N49°18'17"E
L2	40.44	N84°05'17"E
L4	25.00	S85°56'17"W
L5	30.00	N46°04'17"E
L7	30.00	N40°41'43"W
L8	2.60	S49°18'17"W



JEFFERSON D. HOBBS, II
 MD. PROPERTY LINE SURVEYOR NO. 362
 CHIEF: SURVEY DIVISION

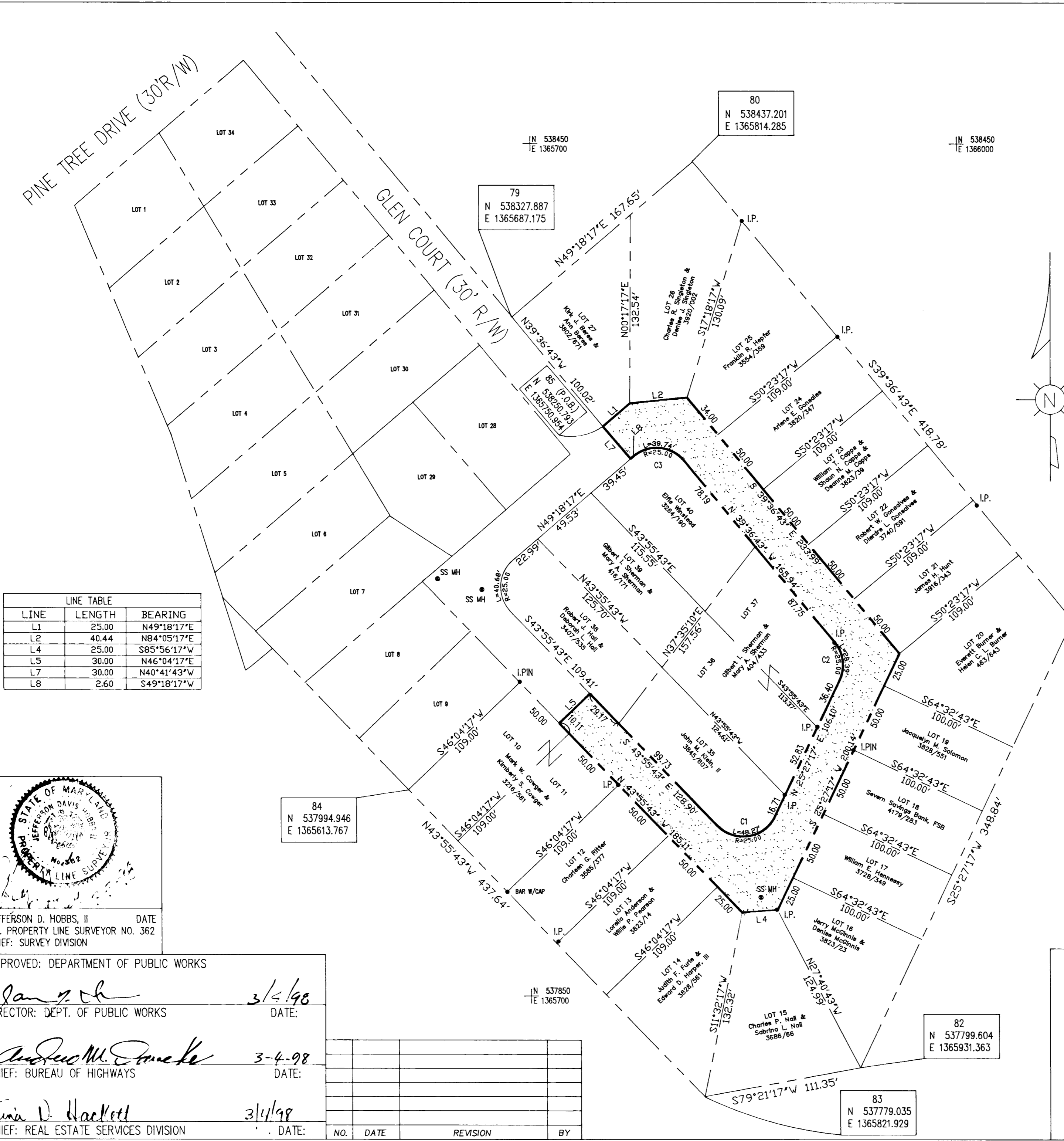
APPROVED: DEPARTMENT OF PUBLIC WORKS

Jan J. Ch... 3/1/98
 DIRECTOR: DEPT. OF PUBLIC WORKS DATE:

Andrew M. ... 3-4-98
 CHIEF: BUREAU OF HIGHWAYS DATE:

Tina D. Hackett 3/1/98
 CHIEF: REAL ESTATE SERVICES DIVISION DATE:

NO.	DATE	REVISION	BY



Bonnie Best-Dee
 3/1/98

- NOTES:
- THIS PLAT IS BASED ON A FIELD RUN AND MONUMENTED BOUNDARY SURVEY ON OR ABOUT AUGUST 13, 1997 BY THIS OFFICE.
 - COORDINATES SHOWN HEREON ARE MARYLAND STATE GRID NAD '83 AS PROJECTED FROM HOWARD COUNTY CONTROL STATIONS 47F5 AND 48AB.
 - AREA OF ACQUISITION HATCHED AS SHOWN.

AREA TABULATION
 AREA OF RIGHT-OF-WAY ACQUISITION 19,422 SQ.FT. OR 0.446 ACRES ±

PREPARED BY:
 HOWARD COUNTY DEPARTMENT OF PUBLIC WORKS
 SURVEY DIVISION
 3450 COURT HOUSE DRIVE
 ELLICOTT CITY, MD. 21043
 410-313-2417

HOWARD COUNTY DEPARTMENT OF PUBLIC WORKS
 RIGHT-OF-WAY PROJECT
 PRIVATE ROAD TAKEOVER:

GLEN COURT

SIXTH ELECTION DISTRICT HOWARD COUNTY, MARYLAND
 SCALE: 1"=50' DATE: MARCH 2, 1998
 PROJECT NO. J-4121 JOB NO. 97074 FIELD BOOK 299
 TAX MAP 47 PARCEL 678 LOTS 10-27, 35-38, 40
 COMPUTED BY: AMB DRAWN BY: CAD CHECKED BY: JDH
 PLAT NO. J-4121-FF