

U.S. EQUIVALENT COORDINATE TABLE

POINT	NORTH	EAST	POINT	NORTH	EAST
160	597852.496	1345724.544	160	182225.005	410177.661
161	597761.468	1345651.113	161	182198.060	410155.280
162	597724.632	1345647.287	162	182186.832	410154.113
163	597607.910	1345660.047	163	182151.255	410158.003
207	597307.085	1345639.767	207	182059.563	410151.821
675	597354.802	1345009.934	675	182074.110	409959.852
965	597344.179	1344903.207	965	182070.872	409927.321
1141	598003.597	1345430.898	1141	182271.863	410088.162
1142	598000.256	1345394.556	1142	182270.844	410077.085
1148	597344.179	1344903.207	1148	182070.872	409927.321
1184	597808.919	1345998.085	1184	182212.523	410261.037
1270	598003.597	1345430.898	1270	182271.863	410088.162
2181	598000.256	1345394.556	2181	182270.844	410077.085

METRIC EQUIVALENT COORDINATE TABLE

POINT	NORTH	EAST	POINT	NORTH	EAST
160	597852.496	1345724.544	160	182225.005	410177.661
161	597761.468	1345651.113	161	182198.060	410155.280
162	597724.632	1345647.287	162	182186.832	410154.113
163	597607.910	1345660.047	163	182151.255	410158.003
207	597307.085	1345639.767	207	182059.563	410151.821
675	597354.802	1345009.934	675	182074.110	409959.852
965	597344.179	1344903.207	965	182070.872	409927.321
1141	598003.597	1345430.898	1141	182271.863	410088.162
1142	598000.256	1345394.556	1142	182270.844	410077.085
1148	597344.179	1344903.207	1148	182070.872	409927.321
1184	597808.919	1345998.085	1184	182212.523	410261.037
1270	598003.597	1345430.898	1270	182271.863	410088.162
2181	598000.256	1345394.556	2181	182270.844	410077.085

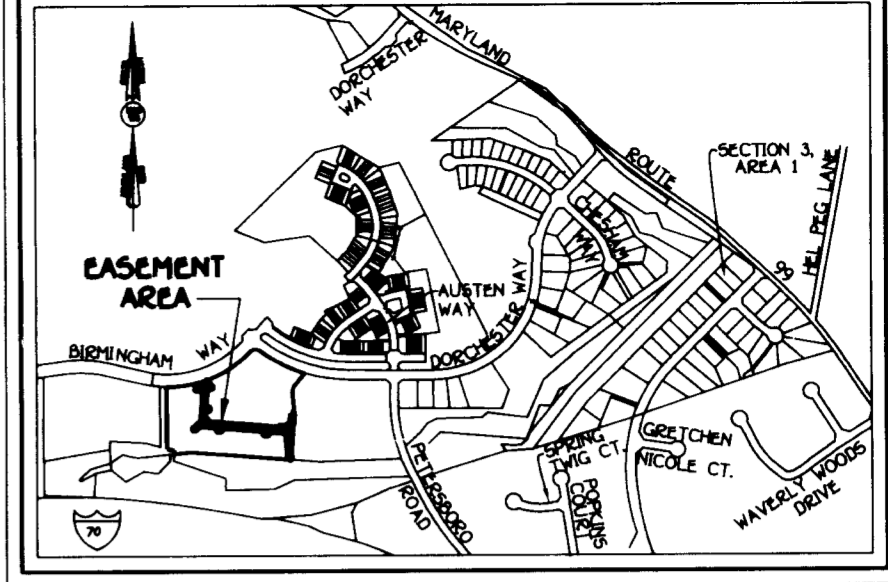
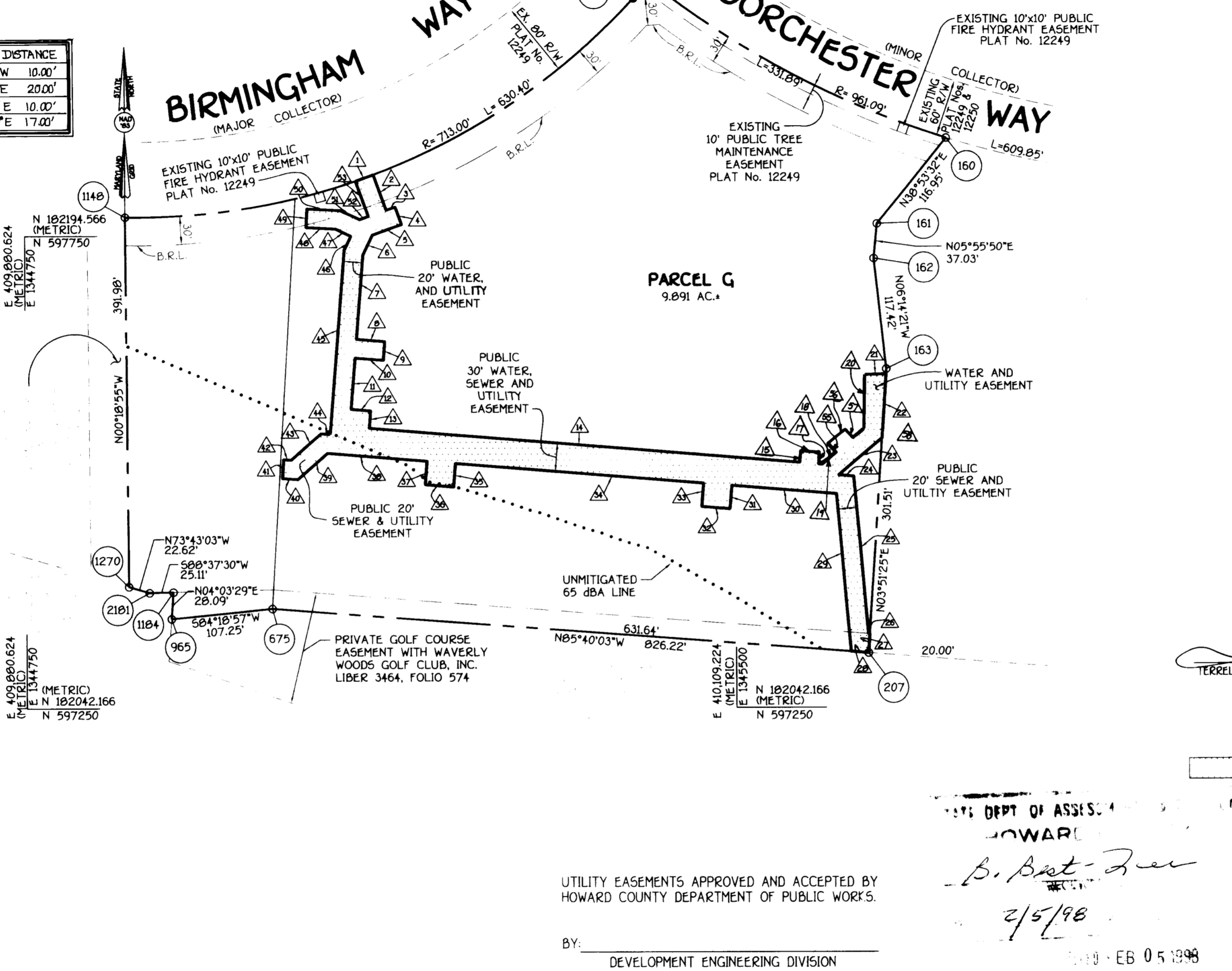
CURVE DATA TABULATION

PNT-PNT	RADIUS	ARC	DELTA	TAN	BEARING & DISTANCE
1148-1142	713.00'	603.40'	48°29'18"	321.09'	N66°50'06"E 505.55'

PUBLIC WATER, SEWER AND UTILITY EASEMENT

SYM.	PNT.	BEARING & DISTANCE
1	R=713.00'	L=20.00'
2	S19°39'40"E	40.07'
3	N70°20'20"E	10.00'
4	S19°39'40"E	20.00'
5	S70°20'20"W	32.86'
6	S25°20'20"W	23.65'
7	S04°40'50"W	89.01'
8	S05°19'10"E	30.00'
9	S04°40'50"W	20.00'
10	N05°19'10"W	30.00'
11	S04°40'50"W	54.26'
12	S05°19'10"E	20.71'
13	S04°40'50"W	18.33'
14	S05°19'10"E	456.37'
15	N04°40'50"E	12.14'
16	S05°19'10"E	20.00'
17	S04°40'50"W	12.14'
18	S05°19'10"E	3.60'
19	N49°40'50"E	58.26'
20	N00°51'31"E	56.80'
21	N08°18'19"E	22.73'
22	S03°51'25"W	67.72'
23	S49°40'50"W	60.37'
24	S05°19'10"E	16.10'
25	S04°58'08"E	168.00'
26	S05°52'50"E	1.42'
27	S03°51'25"W	20.01'
28	N05°40'03"W	18.58'
29	N04°58'08"W	168.10'
30	N05°19'10"W	111.02'
31	S04°40'50"W	25.00'
32	N05°19'10"W	30.00'
33	N04°40'50"E	25.00'
34	N05°19'10"W	262.99'
35	S04°40'50"W	25.00'
36	N05°19'10"W	30.00'
37	N04°40'50"E	25.00'
38	N05°19'10"W	105.46'
39	S48°41'00"W	41.84'
40	N06°19'00"W	16.26'
41	N03°41'00"E	20.00'
42	S06°19'00"E	7.98'
43	N48°41'00"E	42.04'
44	S05°19'10"E	9.78'
45	N04°40'50"E	195.26'
46	N25°20'20"E	16.43'
47	N64°39'40"W	18.01'
48	N87°09'40"W	31.01'
49	N02°50'20"E	20.00'
50	S07°09'40"E	34.99'
51	S64°39'40"E	22.85'
52	N70°20'20"E	9.93'
53	N19°39'40"W	40.07'

SYM.	PNT.	BEARING & DISTANCE
55	N 40°19'10"W	10.00'
56	N 49°40'50"E	20.00'
57	S 40°19'10"E	10.00'
58	N 49°40'50"E	17.00'



VICINITY MAP
SCALE: 1" = 1200'

TERRELL A. FISHER, PROFESSIONAL LAND SURVEYOR No. 10692
DATE 4/9/98

PUBLIC WATER, SEWER AND UTILITY EASEMENT
(32,685 Sq.Ft. OR .750 Ac.)

UTILITY EASEMENTS APPROVED AND ACCEPTED BY
HOWARD COUNTY DEPARTMENT OF PUBLIC WORKS.

BY: _____
DEVELOPMENT ENGINEERING DIVISION

DEPT OF ASSES. & TAX
HOWARD COUNTY
B. Best-Zee
2/5/98
EB 051898

FISHER, COLLINS & CARTER, INC.
CIVIL ENGINEERING CONSULTANTS & LAND SURVEYORS
CENTENNIAL SQUARE OFFICE PARK 10272 BALTIMORE NATIONAL PIKE
ELLCOTT CITY, MARYLAND 21042
(410) 461-2855
40271G0E.DWG

PLAT NUMBER: 24-3640-D-W&S-1A

CONTRACT NUMBER: 24-3640D

SCALE: 1" = 100'

DATE: JANUARY 8, 1998

SHEET 1 OF 1

GRANT OF EASEMENT

THE UNDERSIGNED OWNER OF THE PROPERTY SHOWN AND DESCRIBED ON THE PLAT HEREBY GRANTS UNTO HOWARD COUNTY, MARYLAND, ITS SUCCESSORS AND ASSIGNS, THE RIGHT TO LAY, CONSTRUCT AND MAINTAIN SEWERS, DRAINS, WATER PIPES AND OTHER MUNICIPAL UTILITIES AND SERVICES, IN AND THROUGH THE SPECIFIC RESERVED EASEMENT AREAS AND ROADS SHOWN HEREON. IT IS AGREED THAT NO BUILDINGS OR SIMILAR STRUCTURES OF ANY KIND SHALL BE ERECTED, ON OR OVER THE SAID RIGHT-OF-WAY AND EASEMENTS BY THE GRANTOR, ITS SUCCESSORS AND ASSIGNS, OR THE GRANTEE. IT IS AGREED THAT HOWARD COUNTY, MARYLAND IS IN NO WAY BOUND BY THE RECORDING OF THIS PLAT TO THE OWNERSHIP OF THE EASEMENT AREAS UNTIL SUCH TIME AS THE PUBLIC FACILITIES LOCATED WITHIN THE EASEMENT AREAS ARE ACCEPTED INTO THE PUBLIC SYSTEM BY HOWARD COUNTY, MARYLAND AND THE DEED OF EASEMENT AND AGREEMENT SIGNED BY THE GRANTOR HEREIN IS RECORDED AMONG THE LAND RECORDS OF HOWARD COUNTY, MARYLAND. NEVERTHELESS GRANTOR HEREBY EXPRESSLY AGREES THAT ANY AND ALL SALES OF THE PROPERTY OR PROPERTIES DESCRIBED ON THIS PLAT PRIOR TO THE RECORDATION OF THE DEED OF EASEMENT AND AGREEMENT SHALL BE SPECIFICALLY REFER TO THIS PLAT AND SHALL BE MADE SUBJECT TO THE RESERVED EASEMENT GRANTED HEREIN.

By: *Bruce Taylor*
WAVERLY WOODS DEVELOPMENT CORPORATION
BY: BRUCE TAYLOR, VICE PRESIDENT
Date: 1/12/98

Witness: *Kenneth E. Spanglin*
Date: 1-12-98

Witness: *Robert Wilbur*
Date: 1-12-98

By: *Kenneth Warfield, Jr.*
WAVERLY WOODS DEVELOPMENT CORPORATION
BY: KENNETH WARFIELD, JR., SECRETARY/TREASURER

PLAT FOR GRANT OF EASEMENT TO
HOWARD COUNTY MARYLAND

HOWARD COUNTY DEPARTMENT OF PUBLIC WORKS
WATER, SEWER, AND UTILITY EASEMENT

PROPERTY OF
WAVERLY WOODS DEVELOPMENT CORPORATION
LIBER NO. 3991, FOLIO 171

Tax Map No. 16, Part of Parcel No. 20, Grid 5

THIRD ELECTION DISTRICT
HOWARD COUNTY, MARYLAND

RECORDED AS PLAT No. _____ ON _____
AMONG THE LAND RECORDS OF HOWARD COUNTY, MARYLAND

APPROVED: _____
DEVELOPMENT ENGINEERING DIVISION DATE 1/28/98

APPROVED: *Tina D. Hackett*
LAND ACQUISITION DATE 1/28/98

DRAWN BY: _____

CHECKED BY: _____