

LINE DATA

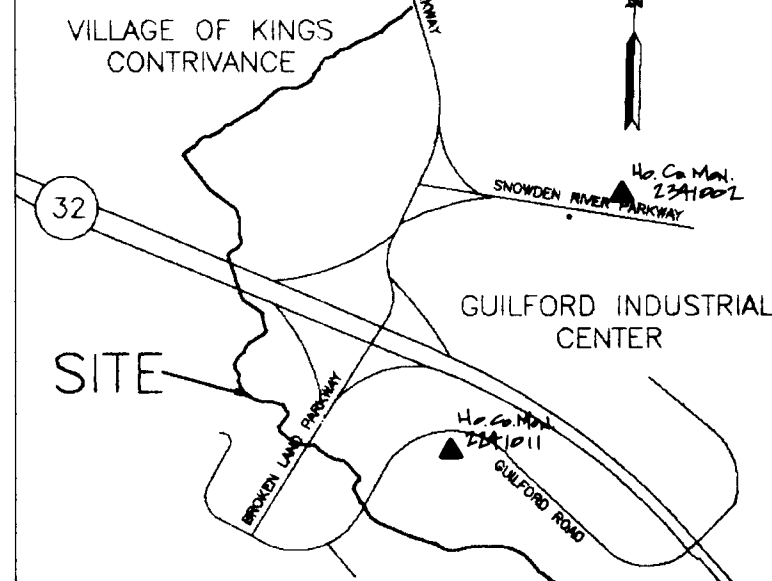
LINE	DIRECTION	DISTANCE
L-8	S19°26'41"E	105.54'
L-9	S65°30'13"E	100.97'
L-10	S86°54'11"E	77.48'
L-11	S79°05'57"E	33.15'
L-12	S33°12'55"E	23.93'
L-13	S38°51'31"W	115.60'
L-14	S48°54'35"E	22.02'

CURVE DATA

CURVE	RADIUS	LENGTH	TANGENT	CHORD	BEARING	DELTA
C-10	100.00'	80.39'	42.51'	78.24'	S42°28'27"E	46°03'31"
C-11	175.00'	65.36'	33.07'	64.98'	S76°12'12"E	21°23'59"
C-12	170.59'	63.02'	31.87'	62.66'	S76°19'12"E	21°09'58"
C-13	125.00'	29.15'	14.64'	29.09'	S72°25'05"E	13°21'43"
C-14	46.64'	51.20'	28.52'	48.67'	S47°39'08"E	62°53'38"
C-15	50.00'	14.84'	7.48'	14.79'	S24°42'37"E	17°00'35"
C-16	75.00'	94.34'	54.56'	88.25'	S02°49'18"W	72°04'26"
C-17	25.00'	38.30'	24.04'	34.66'	S05°01'32"E	87°46'06"

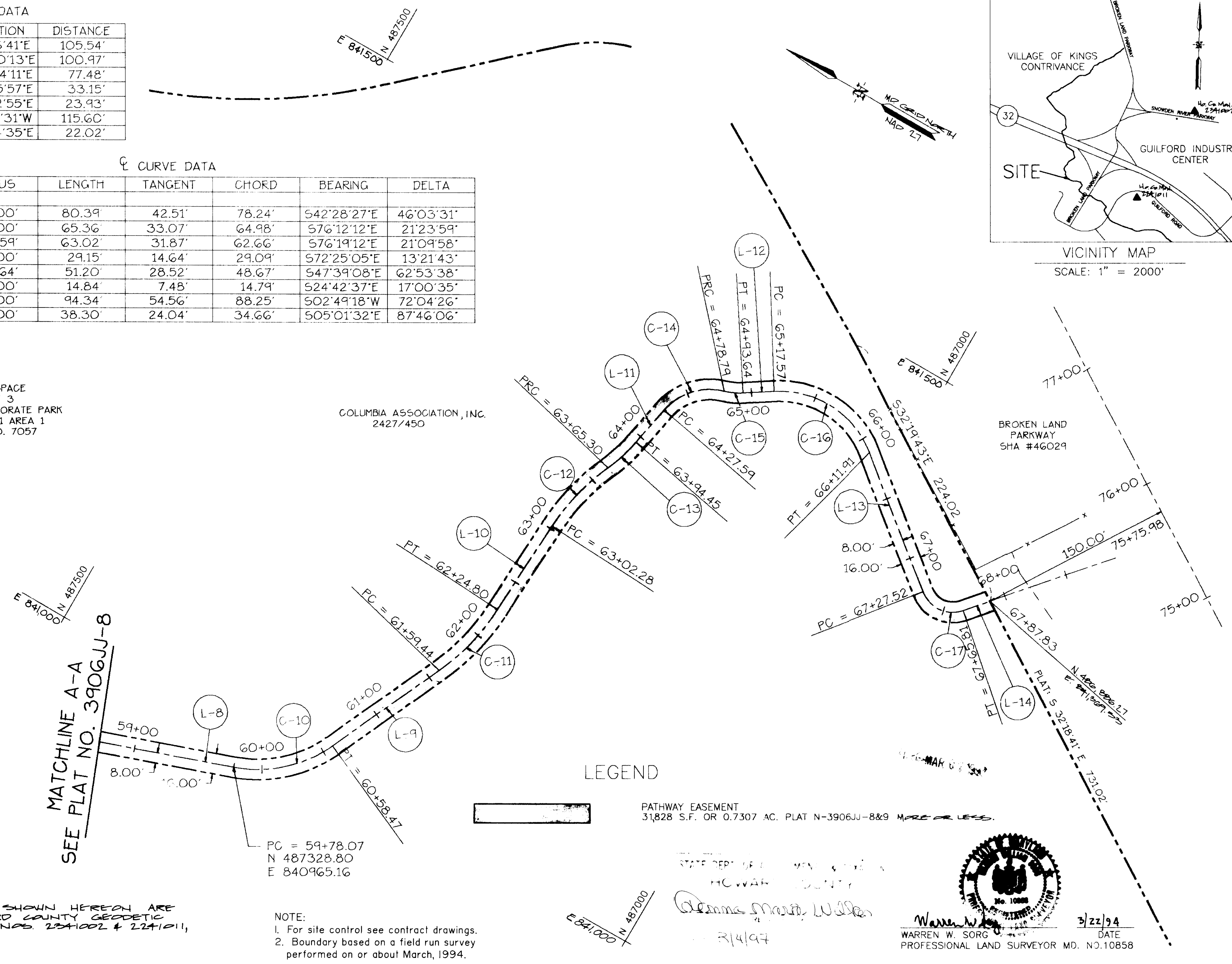
OPEN SPACE
LOT 3
RIVERS CORPORATE PARK
SECTION 1 AREA 1
PLAT NO. 7057

COLUMBIA ASSOCIATION, INC.
2427/450



VICINITY MAP
SCALE: 1" = 2000'

MATCHLINE A-A
SEE PLAT NO. 3906JJ-8



LEGEND

PATHWAY EASEMENT
31,828 S.F. OR 0.7307 AC. PLAT N-3906JJ-8&9 MORE OR LESS.

NOTE: COORDINATES SHOWN HEREON ARE BASED ON HOWARD COUNTY GEODETIC SYSTEM POINTS NOS. 2241002 & 2241011, NAD 27 DATUM.

NOTE:
1. For site control see contract drawings.
2. Boundary based on a field run survey performed on or about March, 1994.

STATE DEPARTMENT OF PUBLIC WORKS
HOWARD COUNTY
Warren W. Sorg
3/22/94
WARREN W. SORG
PROFESSIONAL LAND SURVEYOR MD. NO. 10858

No.	REVISION	BY	DATE	PLAT NO. N-3906JJ-9	HOWARD COUNTY DEPARTMENT OF PUBLIC WORKS PATHWAY EASEMENT	APPROVED REAL ESTATE SER. DIV. Tina D. Hackett 2/21/94 DATE	PREPARED BY:	GREENMAN-PEDERSEN INC. ENGINEERS/ARCHITECTS/PLANNERS/SURVEYORS 14504 GREENVIEW DRIVE, SUITE 100 LAUREL, MD. 20708 WASH. (301) 470-2772 BALT. (410) 880-3055
#1	ADD STORM DRAINAGE EASEMENT	G.W.D.	05-96	CAPITAL PROJ. NO. N-3906JJ	COLUMBIA ASSOCIATION, INC. LOT 3 RIVERS CORPORATE PARK SECTION 1 AREA 1 TAX MAP 42 PARCEL 322 LIBER 2427 FOLIO 450 6TH. ELECTION DISTRICT HOWARD COUNTY, MARYLAND	BUR. OF ENGINEERING Kenneth Edwards 2/21/94 DATE	gpi	DRAWN BY: N.B.&C.L.I. CHECKED BY: W.W.S.