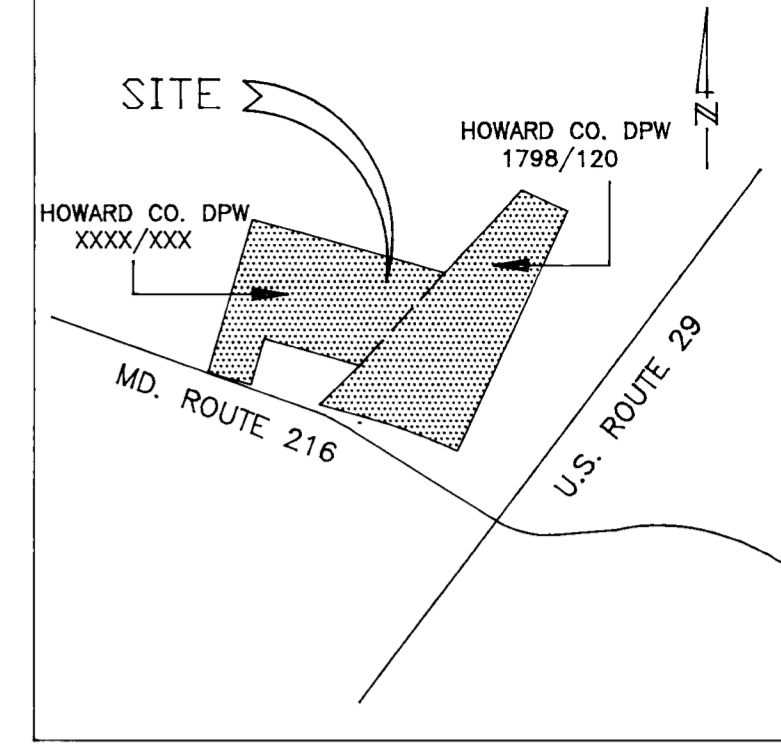


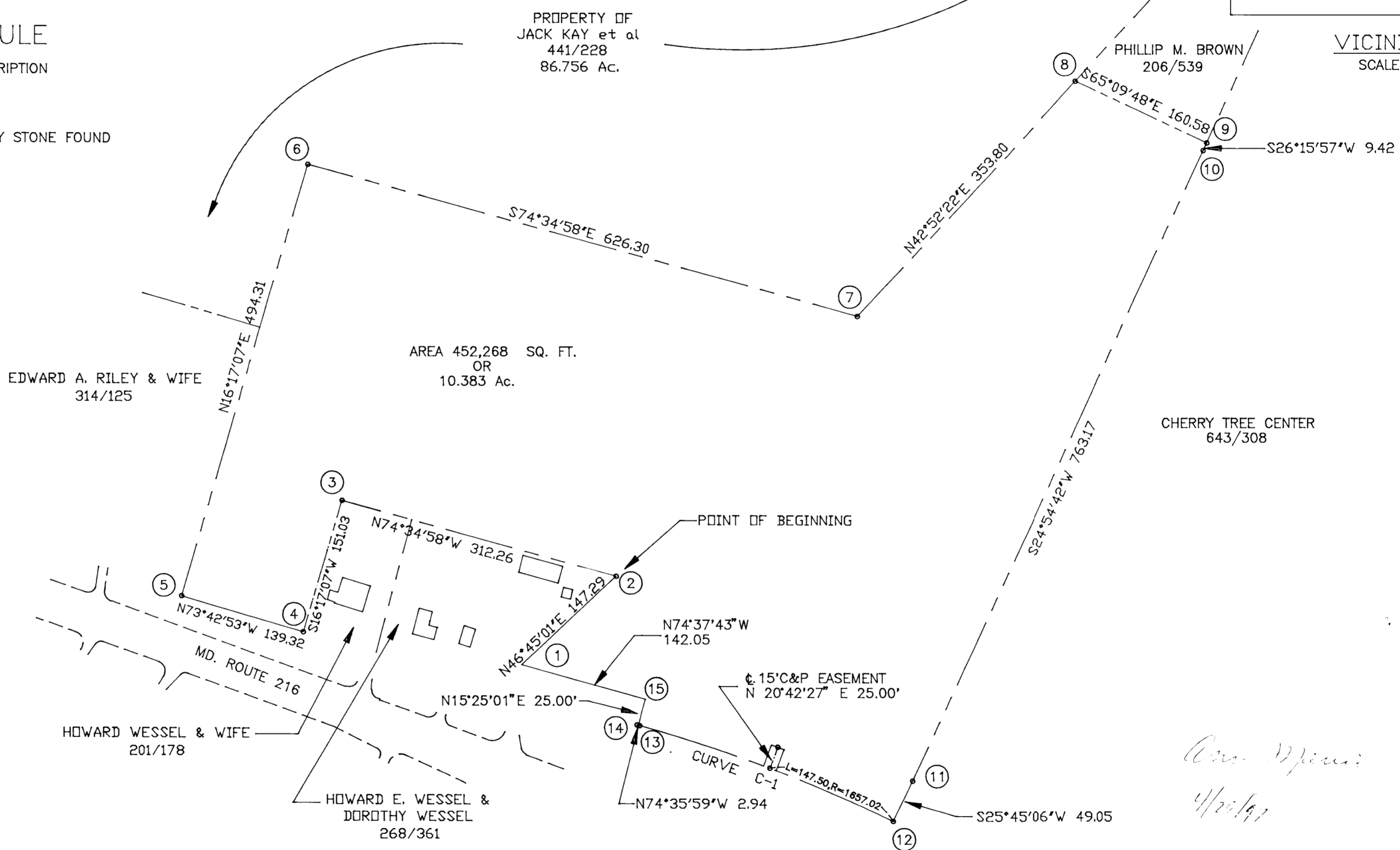
REVISION	BY	DATE

NOTE: COORDINATES SHOWN ARE BASED ON HOWARD COUNTY GEODETIC SYSTEM POINT NOS. 2039001 AND 2039005.



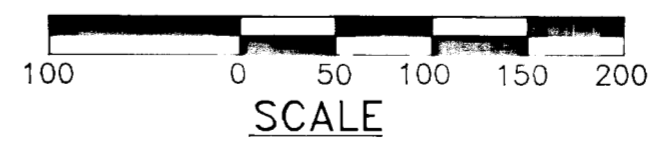
COORDINATE SCHEDULE

POINT	NORTH	EAST	DESCRIPTION
1	478140.029	827468.652	
2	478240.949	827575.934	PROPERTY STONE FOUND
3	478323.962	827274.910	
4	478178.992	827232.558	
5	478218.060	827098.828	
6	478692.533	827237.442	
7	478526.034	827841.205	
8	478785.320	828081.920	
9	478717.870	828227.650	
10	478709.420	828223.480	
11	478017.260	827902.020	
12	477973.081	827880.709	
13	478077.487	827601.811	
14	478078.269	827598.972	
15	478102.375	827605.620	



CURVE DATA

NO.	RADIUS	LENGTH	TANGENT	DELTA	CHORD BEARING	DISTANCE
C-1	1657.02	298.20	149.50	10°18'40"	N69°28'35"W	297.80



*George Chagetas*  
4/20/97

Prepared by:

EBA Engineering, Inc.  
5800 Metro Drive  
Baltimore, Maryland 21215  
Phone: (410) 358-7171

DRAWN BY: HJP  
CHECKED BY: GC  
PLAT NO. C-0227-2  
CAPITOL PROJECT NO. C-0227  
SCALE 1"=100'  
DATE 08-31-93

TAX MAP: 46  
PARCEL: 124  
288  
361

HOWARD COUNTY DEPARTMENT OF PUBLIC WORKS  
CONSOLIDATION PLAT  
PROPERTY OF HOWARD COUNTY,  
MARYLAND

*George Chagetas*  
GEORGE CHAGETAS, PROP. LINE SURVEYOR NO. 29

APPROVED  
REAL ESTATE  
SERVICES DIVISION  
*Kira D. Hackett*  
DATE  
BUREAU OF ENGINEERING  
*[Signature]*  
DATE