

NUMBER	POINT	NORTH	EAST
1	561,046.70	1,352,441.25	
2	561,046.70	1,352,441.25	
3	561,046.70	1,352,441.25	
4	561,046.70	1,352,441.25	
5	561,046.70	1,352,441.25	
6	561,046.70	1,352,441.25	
7	561,046.70	1,352,441.25	
8	561,046.70	1,352,441.25	
9	561,046.70	1,352,441.25	
10	561,046.70	1,352,441.25	
11	561,046.70	1,352,441.25	
12	561,046.70	1,352,441.25	
13	561,046.70	1,352,441.25	
14	561,046.70	1,352,441.25	
15	561,046.70	1,352,441.25	
16	561,046.70	1,352,441.25	
17	561,046.70	1,352,441.25	
18	561,046.70	1,352,441.25	
19	561,046.70	1,352,441.25	
20	561,046.70	1,352,441.25	
21	561,046.70	1,352,441.25	
22	561,046.70	1,352,441.25	
23	561,046.70	1,352,441.25	
24	561,046.70	1,352,441.25	
25	561,046.70	1,352,441.25	
26	561,046.70	1,352,441.25	
27	561,046.70	1,352,441.25	
28	561,046.70	1,352,441.25	
29	561,046.70	1,352,441.25	
30	561,046.70	1,352,441.25	
31	561,046.70	1,352,441.25	
32	561,046.70	1,352,441.25	
33	561,046.70	1,352,441.25	
34	561,046.70	1,352,441.25	
35	561,046.70	1,352,441.25	
36	561,046.70	1,352,441.25	
37	561,046.70	1,352,441.25	
38	561,046.70	1,352,441.25	
39	561,046.70	1,352,441.25	
40	561,046.70	1,352,441.25	
41	561,046.70	1,352,441.25	
42	561,046.70	1,352,441.25	
43	561,046.70	1,352,441.25	
44	561,046.70	1,352,441.25	
45	561,046.70	1,352,441.25	
46	561,046.70	1,352,441.25	
47	561,046.70	1,352,441.25	
48	561,046.70	1,352,441.25	
49	561,046.70	1,352,441.25	
50	561,046.70	1,352,441.25	
51	561,046.70	1,352,441.25	
52	561,046.70	1,352,441.25	
53	561,046.70	1,352,441.25	
54	561,046.70	1,352,441.25	
55	561,046.70	1,352,441.25	
56	561,046.70	1,352,441.25	
57	561,046.70	1,352,441.25	
58	561,046.70	1,352,441.25	
59	561,046.70	1,352,441.25	
60	561,046.70	1,352,441.25	
61	561,046.70	1,352,441.25	
62	561,046.70	1,352,441.25	
63	561,046.70	1,352,441.25	
64	561,046.70	1,352,441.25	
65	561,046.70	1,352,441.25	
66	561,046.70	1,352,441.25	
67	561,046.70	1,352,441.25	
68	561,046.70	1,352,441.25	
69	561,046.70	1,352,441.25	
70	561,046.70	1,352,441.25	
71	561,046.70	1,352,441.25	
72	561,046.70	1,352,441.25	
73	561,046.70	1,352,441.25	
74	561,046.70	1,352,441.25	
75	561,046.70	1,352,441.25	
76	561,046.70	1,352,441.25	
77	561,046.70	1,352,441.25	
78	561,046.70	1,352,441.25	
79	561,046.70	1,352,441.25	
80	561,046.70	1,352,441.25	
81	561,046.70	1,352,441.25	
82	561,046.70	1,352,441.25	
83	561,046.70	1,352,441.25	
84	561,046.70	1,352,441.25	
85	561,046.70	1,352,441.25	
86	561,046.70	1,352,441.25	
87	561,046.70	1,352,441.25	
88	561,046.70	1,352,441.25	
89	561,046.70	1,352,441.25	
90	561,046.70	1,352,441.25	
91	561,046.70	1,352,441.25	
92	561,046.70	1,352,441.25	
93	561,046.70	1,352,441.25	
94	561,046.70	1,352,441.25	
95	561,046.70	1,352,441.25	
96	561,046.70	1,352,441.25	
97	561,046.70	1,352,441.25	
98	561,046.70	1,352,441.25	
99	561,046.70	1,352,441.25	
100	561,046.70	1,352,441.25	

LINE	BEARING	DISTANCE
L1	S 81° 17' 27" W	171.00
L2	N 38° 25' 35" W	164.91
L3	S 38° 50' 15" E	139.27
L4	S 09° 37' 06" E	400.14
L5	N 09° 37' 06" W	144.41
L6	S 38° 50' 15" E	144.08
L7	N 38° 50' 15" W	124.89
L8	N 23° 47' 37" E	41.09
L9	N 19° 27' 43" W	63.46
L10	S 19° 27' 43" E	37.20
L11	N 09° 37' 06" W	130.68
L12	S 26° 50' 59" W	40.00
L13	S 26° 50' 59" W	40.00
L14	S 26° 50' 59" W	40.00
L15	S 26° 50' 59" W	40.00
L16	S 26° 50' 59" W	40.00
L17	S 26° 50' 59" W	40.00
L18	S 26° 50' 59" W	40.00
L19	S 26° 50' 59" W	40.00
L20	S 26° 50' 59" W	40.00
L21	S 26° 50' 59" W	40.00
L22	S 26° 50' 59" W	40.00
L23	S 26° 50' 59" W	40.00
L24	S 26° 50' 59" W	40.00
L25	S 26° 50' 59" W	40.00
L26	S 26° 50' 59" W	40.00
L27	S 26° 50' 59" W	40.00
L28	S 26° 50' 59" W	40.00
L29	S 26° 50' 59" W	40.00
L30	S 26° 50' 59" W	40.00
L31	S 26° 50' 59" W	40.00

ID	DELTA	RADIUS	ARC LENG.	TANGENT	CHORD	CH. BEARING
C 1	12° 18' 08"	786.42'	168.85'	84.75'	168.53'	N 32° 41' 09" W
C 2	62° 01' 05"	144.00'	155.87'	86.55'	148.37'	S 69° 50' 48" E
C 3	16° 12' 28"	806.00'	228.00'	114.77'	227.24'	N 27° 34' 04" W
C 4	03° 09' 57"	806.00'	44.54'	22.27'	44.53'	N 37° 15' 16" W
C 5	17° 23' 13"	25.00'	51.21'	41.11'	42.72'	S 82° 28' 41" W
C 6	81° 10' 25"	25.00'	35.42'	21.42'	32.53'	S 50° 11' 55" E
C 7	11° 24' 47"	629.67'	125.43'	62.92'	125.22'	S 83° 22' 51" W
C 8	02° 12' 33"	629.67'	24.26'	12.13'	24.26'	N 89° 39' 56" W
C 9	00° 38' 56"	629.67'	7.13'	3.57'	7.13'	N 77° 29' 34" E
C 10	87° 25' 07"	25.00'	38.14'	23.90'	34.55'	N 34° 05' 25" E
C 11	80° 07' 18"	165.11'	230.89'	138.84'	212.53'	S 76° 47' 22" W
C 12	29° 03' 06"	786.42'	398.75'	203.76'	394.49'	N 11° 59' 17" W
C 13	61° 27' 41"	144.49'	155.00'	85.90'	147.67'	S 66° 10' 39" W
C 14	17° 23' 13"	140.00'	257.95'	129.97'	257.36'	N 72° 25' 54" E
C 15	05° 00' 13"	940.00'	82.09'	41.07'	82.05'	N 07° 05' 01" W

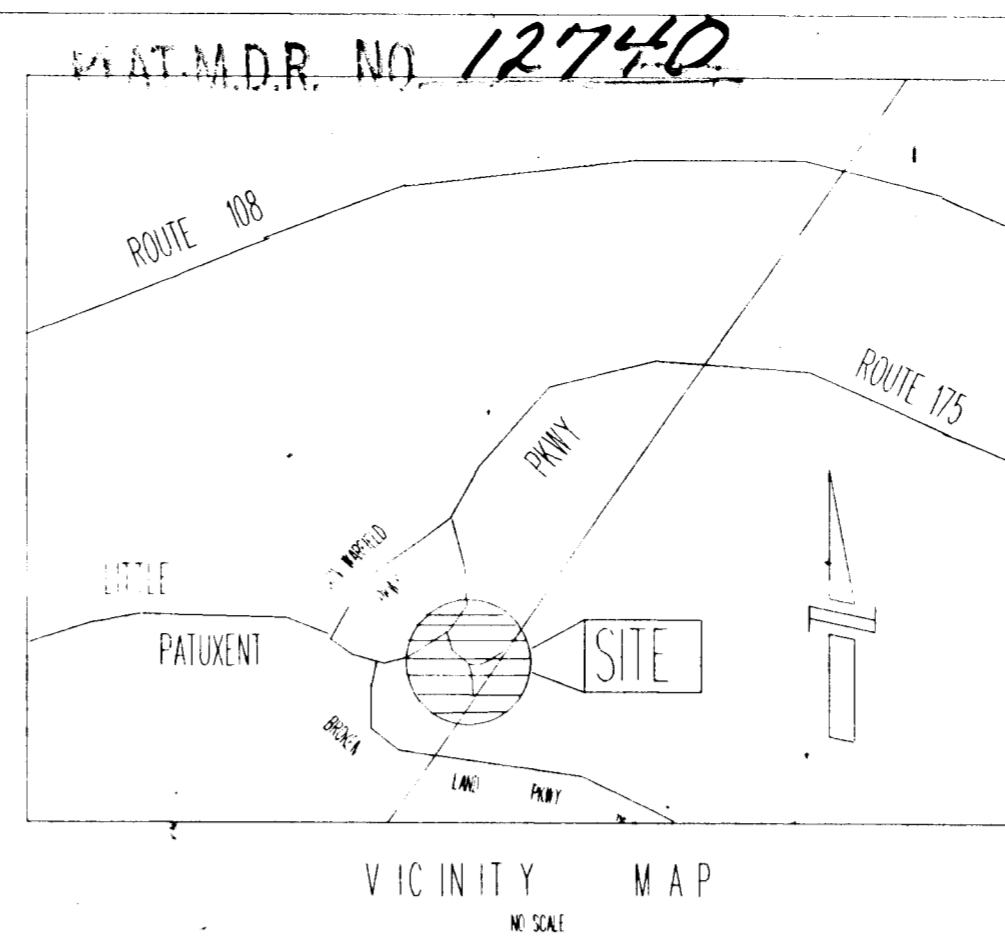
AREA TABULATION

THOSE PARCELS TO BE TRANSFERRED TO HOWARD COUNTY, MARYLAND

LOT-4 OPEN SPACE 0.128 ACRES OR 5581.565 SQUARE FEET MORE OR LESS
 SYMPHONY WOODS ROAD 0.744 ACRES OR 32421.232 SQUARE FEET MORE OR LESS
 PORTION OF LOT-3 OPEN SPACE 2.270 ACRES OR 96266.772 SQUARE FEET MORE OR LESS
 TOTAL 3.082 ACRES OR 134,209.51 SQUARE FEET MORE OR LESS

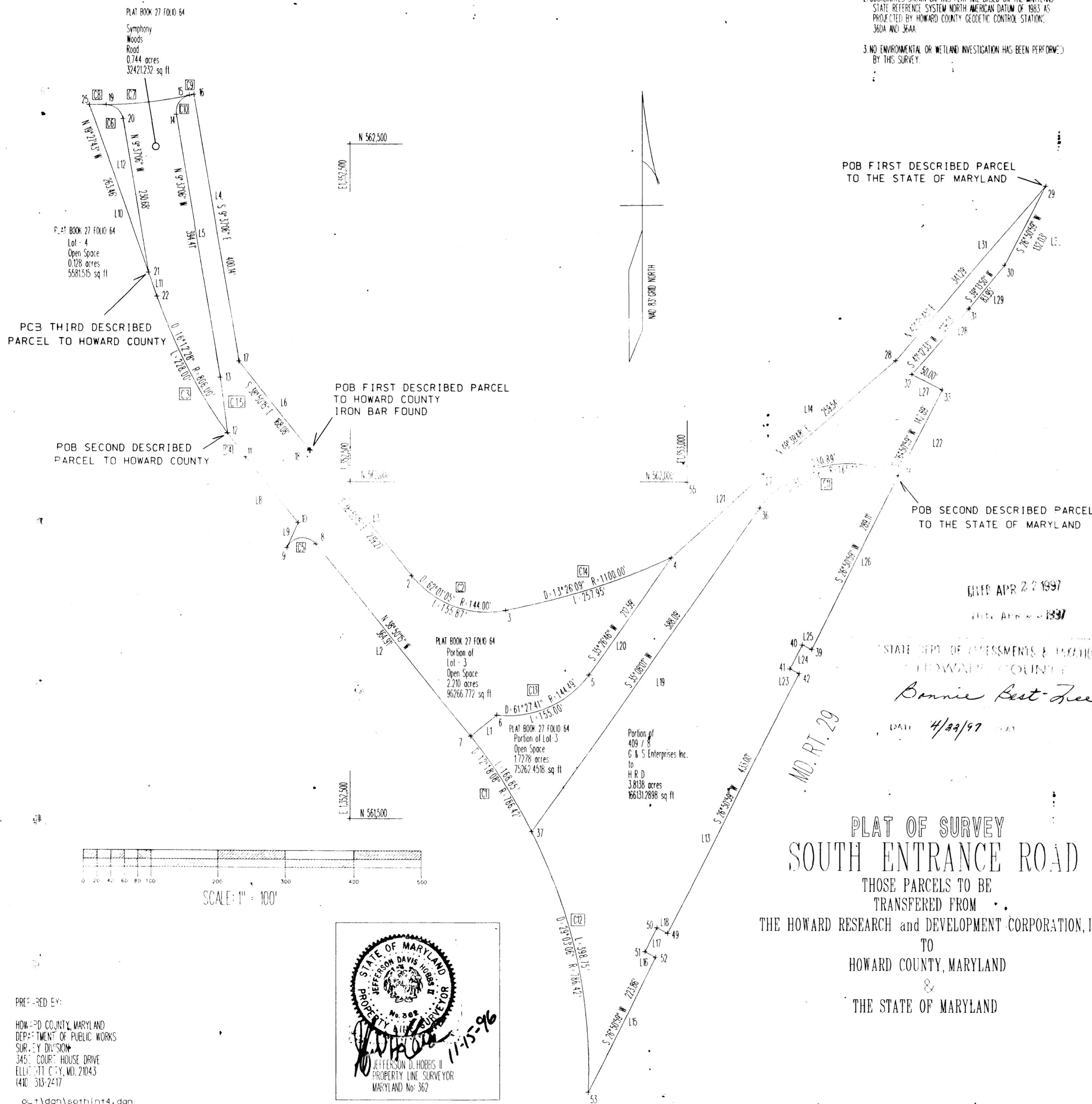
THOSE PARCELS TO BE TRANSFERRED TO THE STATE OF MARYLAND

PORTION OF LOT-3 OPEN SPACE 1.728 ACRES OR 75262.452 SQUARE FEET MORE OR LESS
 PORTION OF LIGER 409 / 8 3.814 ACRES OR 166,131,290 SQUARE FEET MORE OR LESS
 TOTAL 5.542 ACRES OR 241,393,740 SQUARE FEET MORE OR LESS

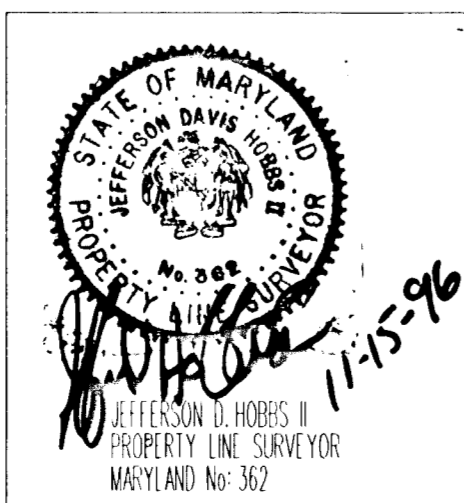


GENERAL NOTES

- THIS PLAT IS BASED ON A FIELD BOUNDARY SURVEY PERFORMED ON OR ABOUT AUGUST 8, 1994 BY THE HOWARD COUNTY, MARYLAND DEPARTMENT OF PUBLIC WORKS, SURVEY DIVISION.
- COORDINATES SHOWN ON THIS PLAT ARE BASED ON THE MARYLAND STATE REFERENCE SYSTEM NORTH AMERICAN DATUM OF 1983 AS PROJECTED BY HOWARD COUNTY GEODETIC CONTROL STATION 360A WGS 86AA.
- NO ENVIRONMENTAL OR WETLAND INVESTIGATION HAS BEEN PERFORMED BY THIS SURVEY.

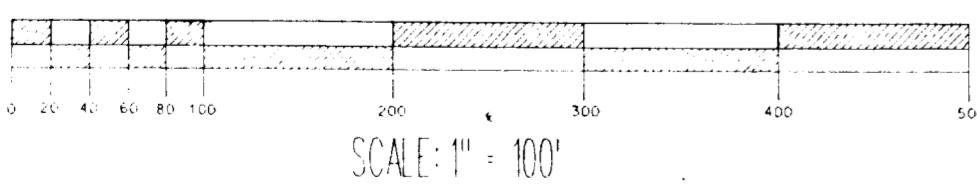


PREF - RED EX:
 HOWARD COUNTY, MARYLAND
 DEPARTMENT OF PUBLIC WORKS
 SURVEY DIVISION
 3451 COURT HOUSE DRIVE
 ELLICOTT CITY, MD 21043
 (410) 313-7417



PLAT OF SURVEY
 SOUTH ENTRANCE ROAD
 THOSE PARCELS TO BE
 TRANSFERRED FROM
 THE HOWARD RESEARCH AND DEVELOPMENT CORPORATION, INC.
 TO
 HOWARD COUNTY, MARYLAND
 &
 THE STATE OF MARYLAND

FILED APR 22 1997
 STATE DEPT. OF ASSESSMENTS & TAXATION
 HOWARD COUNTY
 Bonnie Best-Jee
 DATE 4/23/97



SCALE: 1" = 100'