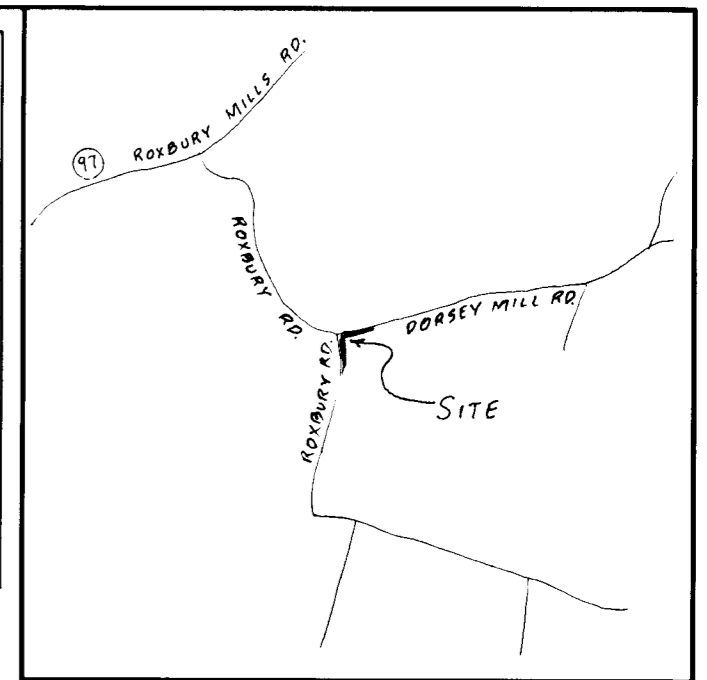


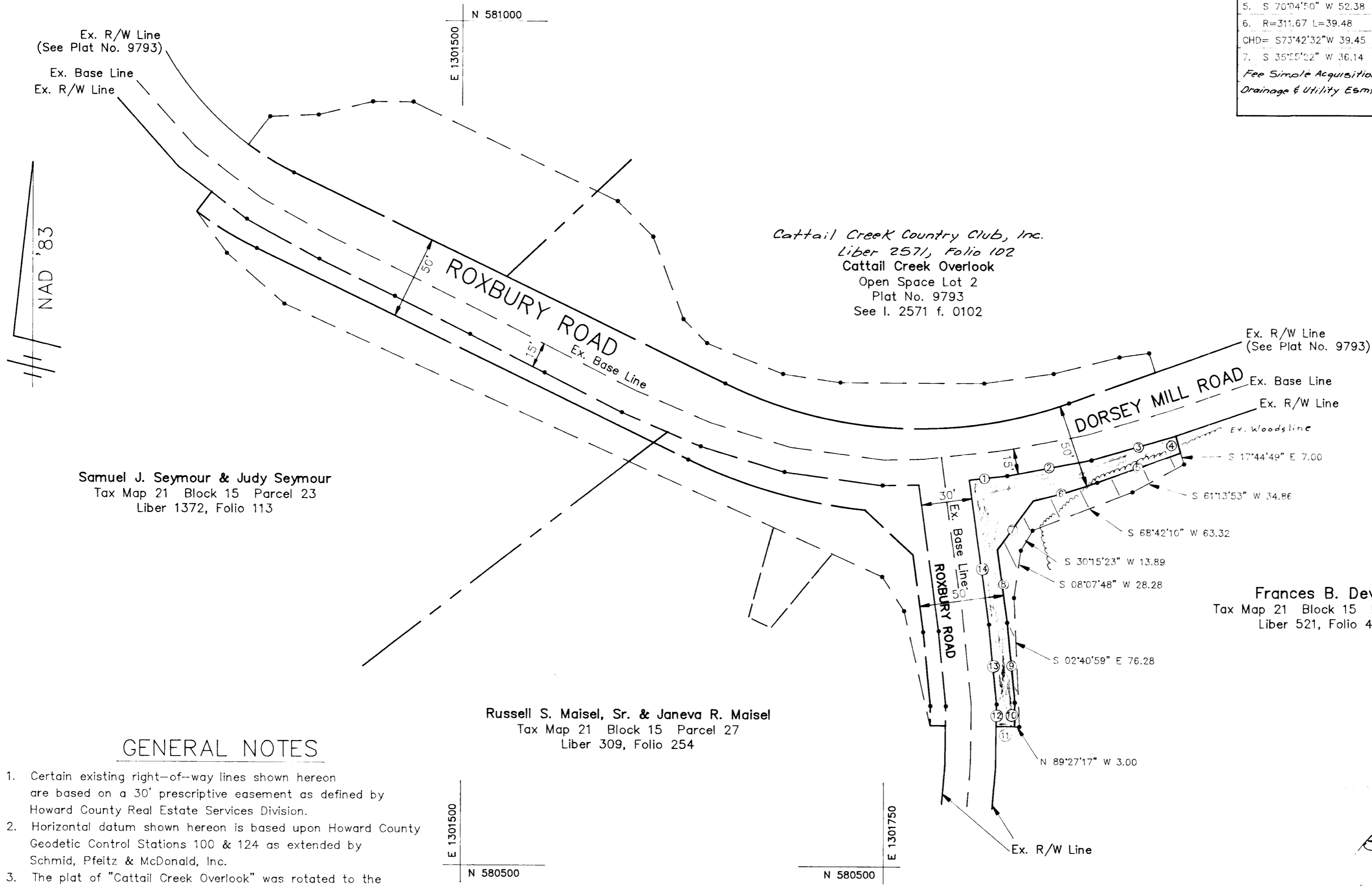
Todd J. Lepage & Melissa A. Lepage
 Liber 3483, Folio 487
 Cattail Creek Overlook
 Lot 1
 Plat No. 9793

Frances B. Devlin	
Tax Map 21 Block 15 Parcel 28	
Liber 521, Folio 412	
1. N 83°35'66" E 11.66	8. S 67°47'26" E 47.28
2. N 79°10'42" E 50.73	9. S 05°43'22" E 47.42
3. N 73°35'28" E 51.64	10. S 00°32'43" W 14.37
4. S 17°44'49" E 10.57	11. N 89°27'17" W 10.00
5. S 70°04'50" W 52.38	12. N 00°32'43" E 13.82
6. R=311.67 L=39.48	13. N 05°43'22" W 46.69
CHD= 573'42'32" W 39.45	14. N 07°47'26" W 86.57
7. S 35°55'02" W 36.14	

Fee Simple Acquisition: 3,478 S.F. or 0.08 Ac. ±
 Drainage & Utility Esmt.: 1,986 S.F. or 0.05 Ac. ±



VICINITY MAP
 Scale: 1" = 2000'



Samuel J. Seymour & Judy Seymour
 Tax Map 21 Block 15 Parcel 23
 Liber 1372, Folio 113

Cattail Creek Country Club, Inc.
 Liber 2571, Folio 102
 Cattail Creek Overlook
 Open Space Lot 2
 Plat No. 9793
 See I. 2571 f. 0102

Russell S. Maisel, Sr. & Janeva R. Maisel
 Tax Map 21 Block 15 Parcel 27
 Liber 309, Folio 254

Frances B. Devlin
 Tax Map 21 Block 15 Parcel 28
 Liber 521, Folio 412

GENERAL NOTES

1. Certain existing right-of-way lines shown hereon are based on a 30' prescriptive easement as defined by Howard County Real Estate Services Division.
2. Horizontal datum shown hereon is based upon Howard County Geodetic Control Stations 100 & 124 as extended by Schmid, Pfeltz & McDonald, Inc.
3. The plat of "Cattail Creek Overlook" was rotated to the NAD '83 Grid Meridian based on surveys performed by Boyd and Dowgiallo, P.A. in August, 1995.

LEGEND

- Fee Simple Acquisition: 3,478 Sq. Ft. or 0.08 Ac. ±
- Drainage & Utility Easement: 1,986 Sq. Ft. or 0.05 Ac. ±

Bonnie Best-Price
 11/6/96
 NOV 06 1996

APPROVED: DEPARTMENT OF PUBLIC WORKS
Elizabeth Anderson Calia 4/8/96
 CHIEF, TRANSPORTATION PROJECTS AND WATERSHED MANAGEMENT DIVISION
 DATE

Tim D. Hackett 7/28/95
 CHIEF, REAL ESTATE SERVICES DIVISION
 DATE

REVISIONS

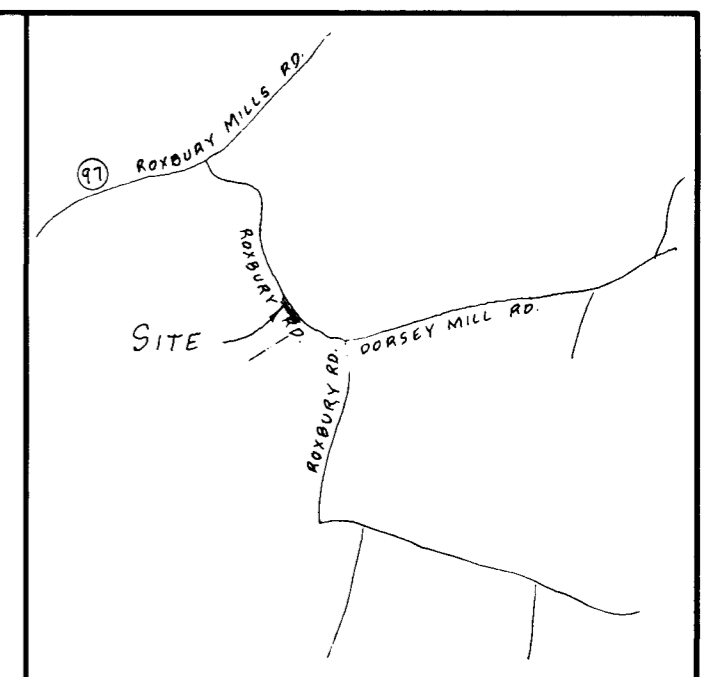
BOYD & DOWGIALLO, P.A. REG.# 171
Anthony L. Dowgiallo 10-15-95
 Professional Land Surveyor #9435
 Date

BOYD & DOWGIALLO, P.A.
 ENGINEERS*PLANNERS*SURVEYORS
 405 Headquarters Drive
 Suites 7 & 8
 Millersville, Maryland 21108
 (410) 987-2500
 DRAWN BY: CK CHECKED BY: JT

HOWARD COUNTY DEPARTMENT OF PUBLIC WORKS
DORSEY MILL ROAD BRIDGE REPLACEMENT
 CAPITAL PROJECT B-3827
 FRANCES B. DEVLIN
 TAX MAP 21 BLOCK 15
 PARCEL 28

PROJECT NAME: DORSEY MILL ROAD SCALE: 1"=50'
 SHEET NO. 1 OF 1
 DATE: OCT., 1995 PROJECT NO.: B-3827 JOB NO.:
 PLAT NO.: B-3827-1

PLAT NO. 102



VICINITY MAP
Scale: 1" = 2000'

Samuel J. Seymour & Judy Seymour Tax Map 21 Block 15 Parcel 23 Liber 1372, Folio 113			
1. S 52°13'01" W 10.42	6. S 61°17'37" E 46.93	7. S 63°56'32" E 49.74	
2. N 64°08'51" W 261.17			
3. R=225.00 L=41.81	8. S 63°28'29" E 49.90		
CHD= N 58°49'22" W 41.75	9. S 63°01'54" E 49.58		
4. N 37°36'55" E 14.80	10. S 63°04'43" E 51.33		
5. S 52°23'05" E 26.17	11. S 66°55'56" E 29.37		
Fee Simple Acq. : 3,112 Sq. Ft. or 0.07 Ac.± Drainage & Utility Esmnt. : 5,291 Sq. Ft. or 0.12 Ac.±			

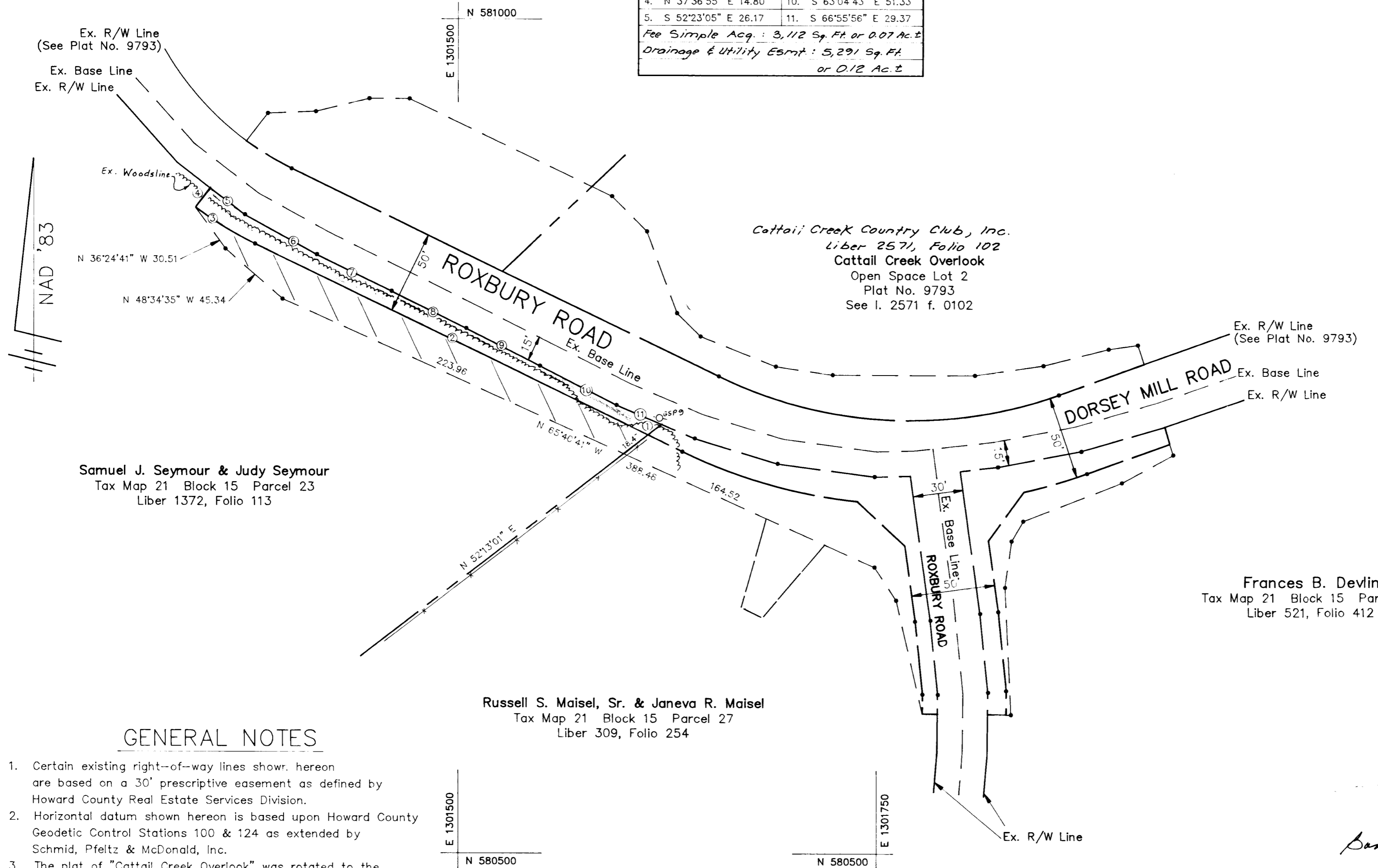
Todd J. Lepage & Melissa A. Lepage
Liber 3483, Folio 487
Cattail Creek Overlook
Lot 1
Plat No. 9793

Cattail Creek Country Club, Inc.
Liber 2571, Folio 102
Cattail Creek Overlook
Open Space Lot 2
Plat No. 9793
See I. 2571 f. 0102

Samuel J. Seymour & Judy Seymour
Tax Map 21 Block 15 Parcel 23
Liber 1372, Folio 113

Russell S. Maisel, Sr. & Janeva R. Maisel
Tax Map 21 Block 15 Parcel 27
Liber 309, Folio 254

Frances B. Devlin
Tax Map 21 Block 15 Parcel 28
Liber 521, Folio 412



GENERAL NOTES

1. Certain existing right-of-way lines shown hereon are based on a 30' prescriptive easement as defined by Howard County Real Estate Services Division.
2. Horizontal datum shown hereon is based upon Howard County Geodetic Control Stations 100 & 124 as extended by Schmid, Peltz & McDonald, Inc.
3. The plat of "Cattail Creek Overlook" was rotated to the NAD '83 Grid Meridian based on surveys performed by Boyd and Dowgiallo, P.A. in August, 1995.

LEGEND

- Fee Simple Acquisition : 3,112 S.F. or 0.07 Ac.±
- Drainage & Utility Easement : 5,291 S.F. or 0.12 Ac.±

Bonnie Best-Lee
11/6/96

APPROVED: DEPARTMENT OF PUBLIC WORKS
Elizabeth Anderson Calia 4/8/96
CHIEF: TRANSPORTATION PROJECTS AND WATERSHED MANAGEMENT DIVISION
Tina O. Hockett 7/1/96
CHIEF: REAL ESTATE SERVICES DIVISION

REVISIONS

STATE OF MARYLAND
PROFESSIONAL LAND SURVEYOR
BOYD & DOWGIALLO, P.A. REG.# 171
Anthony L. Dowgiallo 10-15-95
Professional Land Surveyor #9435

BOYD & DOWGIALLO, P.A.
ENGINEERS*PLANNERS*SURVEYORS
405 Headquarters Drive
Suites 7 & 8
Millersville, Maryland 21108
(410) 987-2500
DRAWN BY: CK CHECKED BY: JT

HOWARD COUNTY DEPARTMENT OF PUBLIC WORKS
DORSEY MILL ROAD BRIDGE REPLACEMENT
CAPITAL PROJECT B-3827
SAMUEL J. SEYMOUR & JUDY SEYMOUR
TAX MAP 21 BLOCK 15
PARCEL 23
PROJECT NAME: DORSEY MILL ROAD SCALE: 1"=50'
SHEET NO. 1 OF 1
DATE: OCT., 1995 PROJECT NO.: B-3827 JOB NO.:
PLAT NO.: B-3827-1

Todd J. Lepage & Melissa A. Lepage
 Liber 3483, Folio 487
 Cattail Creek Overlook
 Lot 1
 Plat No. 9793

Temporary Slope Esmt. For D/W Adjust.
 Russell S. Maisel, Sr. & Janeva R. Maisel
 Tax Map 21 Block 15 Parcel 27
 Liber 309, Folio 254

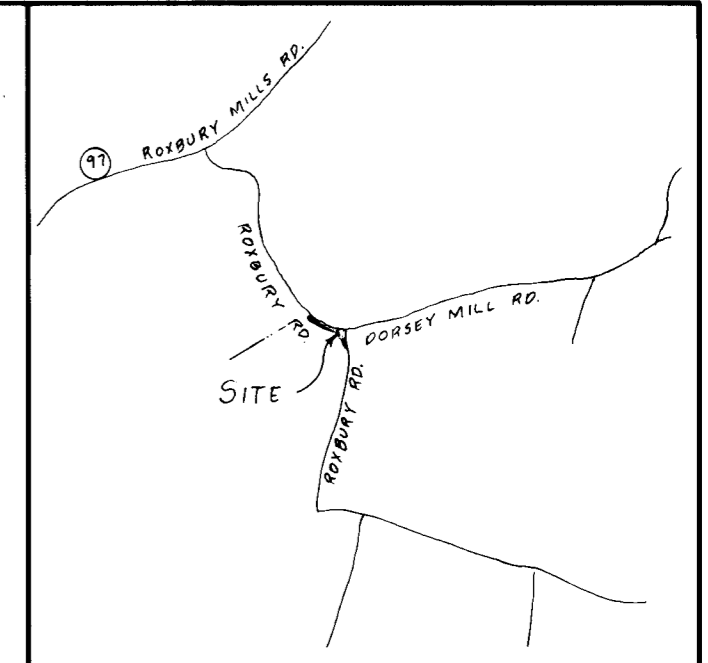
1. S 39°10'38" W 50.92	3. N 16°35'10" E 40.67
2. N 65°40'41" W 15.20	4. S 65°40'41" E 34.94

Temporary Slope Esmt. For Driveway
 Adjustment: 1,234 Sq. Ft. or 0.03 Ac. ±

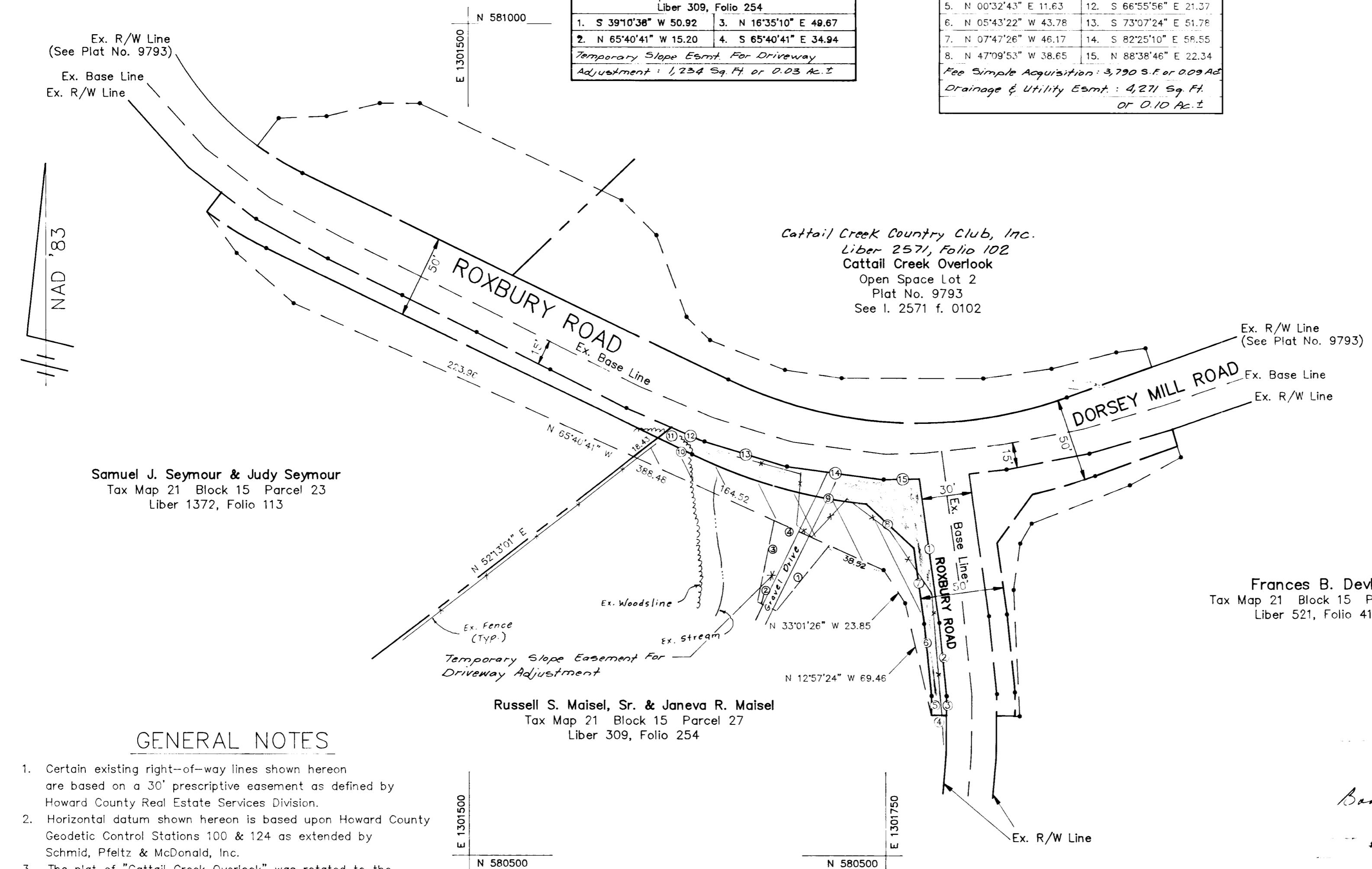
Russell S. Maisel, Sr. & Janeva R. Maisel
 Tax Map 21 Block 15 Parcel 27
 Liber 309, Folio 254

1. S 07°17'26" E 80.95	9. R=311.67 L=109.30
2. S 05°43'22" E 44.51	CHD= N74°11'36" W 108.74
3. S 00°32'43" W 12.18	10. N 64°08'51" W 22.71
4. N 89°27'17" W 10.00	11. N 52°13'01" E 10.42
5. N 00°32'43" E 11.63	12. S 66°55'56" E 21.37
6. N 05°43'22" W 43.78	13. S 73°07'24" E 51.78
7. N 07°47'26" W 46.17	14. S 82°25'10" E 58.55
8. N 47°09'53" W 38.65	15. N 88°38'46" E 22.34

Fee Simple Acquisition: 3,790 S.F. or 0.09 Ac.
 Drainage & Utility Esmt.: 4,271 Sq. Ft.
 or 0.10 Ac. ±



VICINITY MAP
 Scale: 1" = 2000'



Samuel J. Seymour & Judy Seymour
 Tax Map 21 Block 15 Parcel 23
 Liber 1372, Folio 113

Cattail Creek Country Club, Inc.
 Liber 2571, Folio 102
 Cattail Creek Overlook
 Open Space Lot 2
 Plat No. 9793
 See I. 2571 f. 0102

Frances B. Devlin
 Tax Map 21 Block 15 Parcel 28
 Liber 521, Folio 412

GENERAL NOTES

1. Certain existing right-of-way lines shown hereon are based on a 30' prescriptive easement as defined by Howard County Real Estate Services Division.
2. Horizontal datum shown hereon is based upon Howard County Geodetic Control Stations 100 & 124 as extended by Schmid, Pfeltz & McDonald, Inc.
3. The plat of "Cattail Creek Overlook" was rotated to the NAD '83 Grid Meridian based on surveys performed by Boyd and Dowgiallo, P.A. in August, 1995.

LEGEND

- [Solid Line] Temporary Slope Esmt. For Driveway Adjustment: 1,234 Sq. Ft. or 0.03 Ac. ±
- [Dashed Line] Fee Simple Acquisition: 3,790 Sq. Ft. or 0.09 Ac. ±
- [Wavy Line] Drainage & Utility Easement: 4,271 Sq. Ft. or 0.10 Ac. ±

Bonnie Best-Free
 11/6/96

FILED NOV 05 1996

APPROVED: DEPARTMENT OF PUBLIC WORKS
Elizabeth Anderson Calver 4/8/96
 CHIEF, TRANSPORTATION PROJECTS AND WATERSHED MANAGEMENT DIVISION

Tina O. Hackett 7/6/95
 CHIEF, REAL ESTATE SERVICES DIVISION

REVISIONS

STATE OF MARYLAND
 ANTHONY L. DOWGIALLO
 PROFESSIONAL LAND SURVEYOR
 REG. # 171

HOYD & DOWGIALLO, P.A. REG.# 171
Anthony L. Dowgiallo 10-19-95
 Professional Land Surveyor #9435

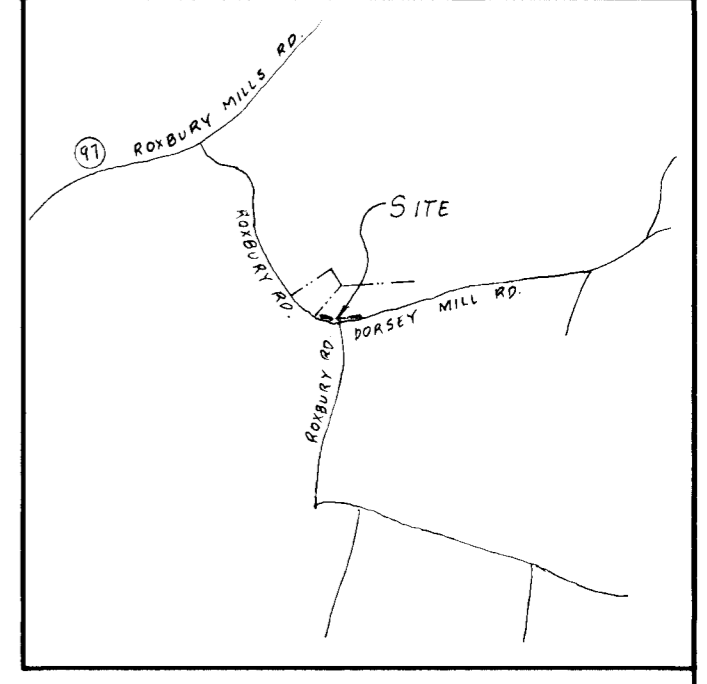
BOYD & DOWGIALLO, P.A.
 ENGINEERS*PLANNERS*SURVEYORS
 405 Headquarters Drive
 Suites 7 & 8
 Millersville, Maryland 21108
 (410) 987-2500

DRAWN BY: CK CHECKED BY: JT

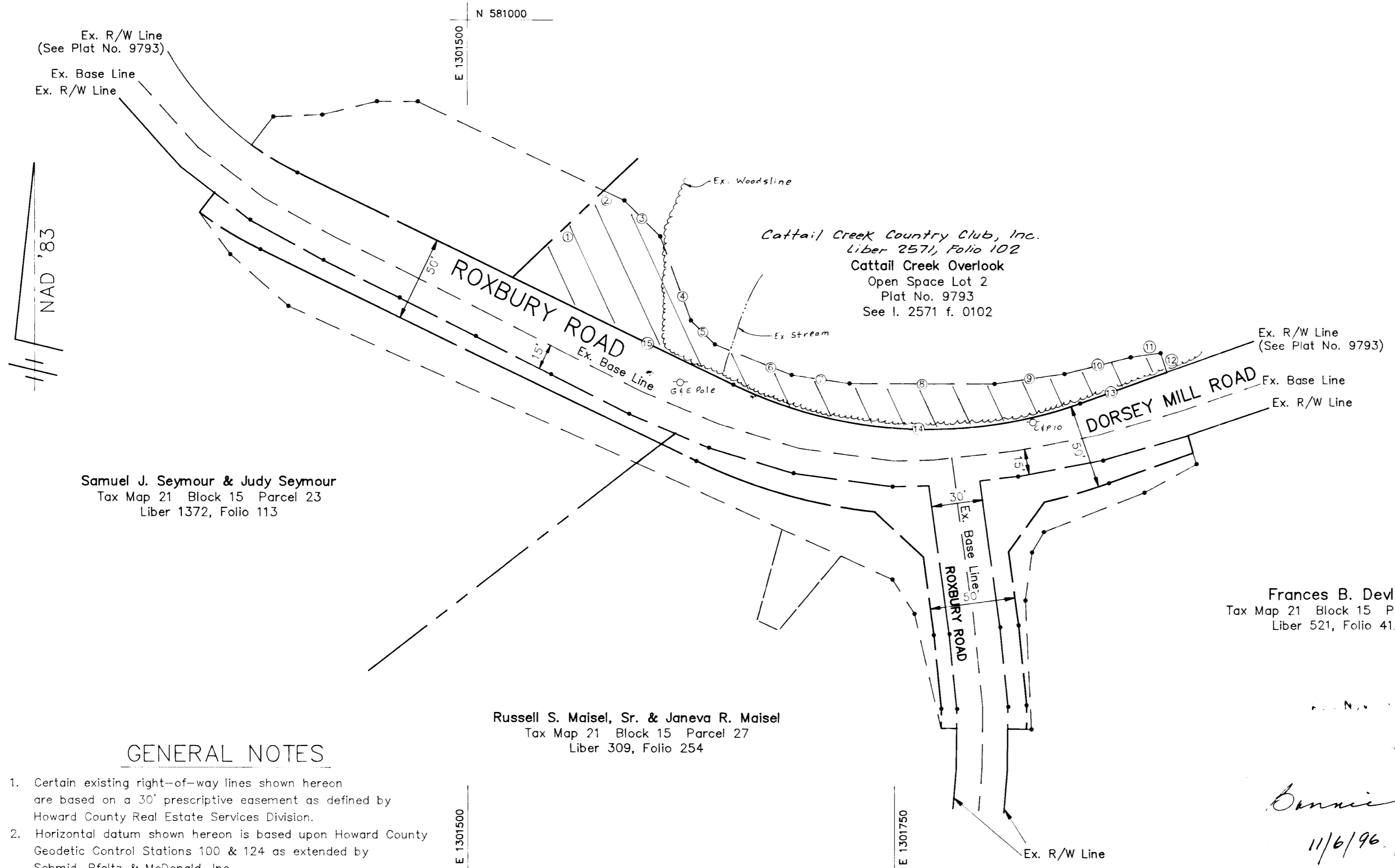
HOWARD COUNTY DEPARTMENT OF PUBLIC WORKS
DORSEY MILL ROAD BRIDGE REPLACEMENT
 CAPITAL PROJECT B-3827
 RUSSELL S. MAISEL SR. & JANEVA R. MAISEL
 TAX MAP 21 BLOCK 15
 PARCEL 27

PROJECT NAME: DORSEY MILL ROAD SCALE: 1"=50'
 SHEET NO. 1 OF 1
 DATE: OCT., 1995 PROJECT NO.: B-3827 JOB NO.:
 PLAT NO.: B-3827-1

Todd J. Lepage & Melissa A. Lepage
 Liber 3483, Folio 487
 Cattail Creek Overlook
 Lot 1
 Plat No. 9793



VICINITY MAP
 Scale: 1" = 2000'



Samuel J. Seymour & Judy Seymour
 Tax Map 21 Block 15 Parcel 23
 Liber 1372, Folio 113

Cattail Creek Country Club, Inc.
 Liber 2571, Folio 102
 Cattail Creek Overlook
 Open Space Lot 2
 Plat No. 9793
 See l. 2571 f. 0102

Frances B. Devlin
 Tax Map 21 Block 15 Parcel 28
 Liber 521, Folio 412

Russell S. Maisel, Sr. & Janeva R. Maisel
 Tax Map 21 Block 15 Parcel 27
 Liber 309, Folio 254

Cattail Creek Country Club, Inc. Open Space Lot 2 1,2571, f.0102 Plat No. 9793	
1. N 46°26'42" E 73.9	9. N 81°40'26" E 41.44
2. S 64°23'23" E 13.37	10. N 75°37'07" E 40.26
3. S 45°00'00" E 29.70	11. N 81°47'24" E 17.70
4. S 20°10'14" E 52.20	12. S 17°44'49" E 12.00
5. S 45°00'00" E 19.80	13. S 70°04'53" W 54.27
6. S 68°11'55" E 48.47	14. R=261.67 L=209.04
7. S 81°38'03" E 34.37	CHD= N 87°01'59" W 203.53
8. N 90°00'00" E 85.00	15. N 64°08'51" W 143.88

Drainage & Utility Easement:
 11,391 Sq. Ft. or 0.26 Ac. ±

GENERAL NOTES

1. Certain existing right-of-way lines shown hereon are based on a 30' prescriptive easement as defined by Howard County Real Estate Services Division.
2. Horizontal datum shown hereon is based upon Howard County Geodetic Control Stations 100 & 124 as extended by Schmid, Pfeltz & McDonald, Inc.
3. The plat of "Cattail Creek Overlook" was rotated to the NAD '83 Grid Meridian based on surveys performed by Boyd and Dowgiallo, P.A. in August, 1995.

LEGEND

Drainage & Utility Easement : 11,391 Sq. Ft. or 0.26 Ac. ±

APPROVED: DEPARTMENT OF PUBLIC WORKS
Elizabeth Anderson Calva 4/8/96
 CHIEF, TRANSPORTATION PROJECTS AND WATERSHED MANAGEMENT DIVISION

Tina D. Claskie 7/2/96
 CHIEF, REAL ESTATE SERVICES DIVISION

REVISIONS

BOYD & DOWGIALLO, P.A. REG.# 171
 Anthony Dowgiallo Date 7-10-19-95
 Professional Land Surveyor #9435

BOYD & DOWGIALLO, P.A.
 ENGINEERS*PLANNERS*SURVEYORS
 405 Headquarters Drive
 Suites 7 & 8
 Millersville, Maryland 21108
 (410) 987-2500
 DRAWN BY: CK CHECKED BY: JT

HOWARD COUNTY DEPARTMENT OF PUBLIC WORKS
DORSEY MILL ROAD BRIDGE REPLACEMENT
 CAPITAL PROJECT B-3827
 CATTAIL CREEK COUNTRY CLUB, INC.
 TAX MAP 21 BLOCK 15
 PARCEL 26

PROJECT NAME: DORSEY MILL ROAD SCALE: 1"=50'
 SHEET NO. 1 OF 1
 DATE: OCT., 1995 PROJECT NO.: B-3827 JOB NO.:
 PLAT NO.: B-3827-1

Bonnie Best-Jee
 11/6/96

Todd J. Lepage & Melissa A. Lepage
 Liber 3483, Folio 487
 Cattail Creek Overlook
 Lot 1
 Plat No. 9793

Temporary Slope Esmt. For D/W Adjust.
 Russell S. Maisel, Sr. & Janeva R. Maisel
 Tax Map 21 Block 15 Parcel 27
 Liber 309, Folio 254

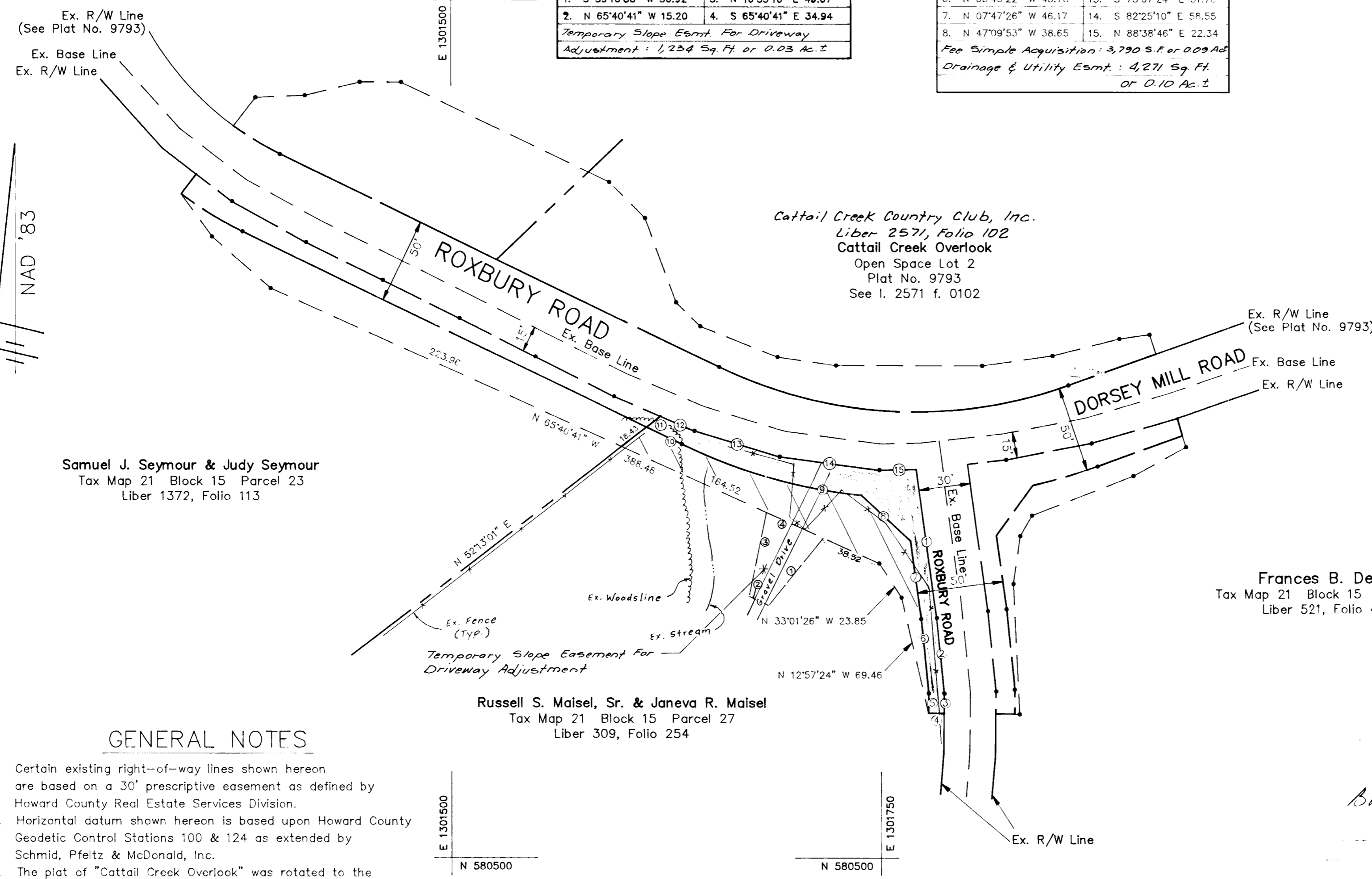
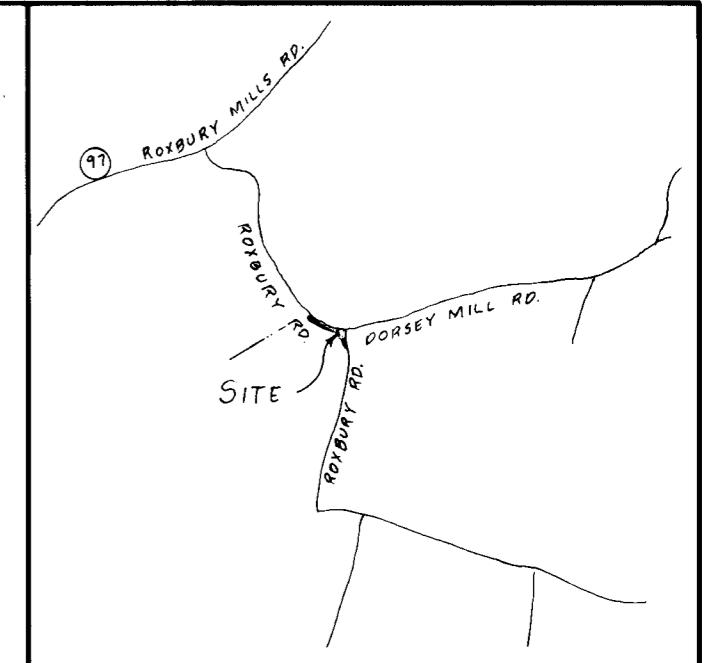
1. S 39°10'38" W 50.92	3. N 16°35'10" E 40.67
2. N 65°40'41" W 15.20	4. S 65°40'41" E 34.94

Temporary Slope Esmt. For Driveway
 Adjustment: 1,234 Sq. Ft. or 0.03 Ac. ±

Russell S. Maisel, Sr. & Janeva R. Maisel
 Tax Map 21 Block 15 Parcel 27
 Liber 309, Folio 254

1. S 07°47'26" E 80.95	9. R=311.67 L=109.30
2. S 05°43'22" E 44.51	CHD= N74°11'36" W 108.74
3. S 00°32'43" W 12.18	10. N 64°08'51" W 22.71
4. N 89°27'17" W 10.00	11. N 52°13'01" E 10.42
5. N 00°32'43" E 11.63	12. S 66°55'56" E 21.37
6. N 05°43'22" W 43.78	13. S 73°07'24" E 51.78
7. N 07°47'26" W 46.17	14. S 82°25'10" E 58.55
8. N 47°09'53" W 38.65	15. N 88°38'46" E 22.34

Fee Simple Acquisition: 3,790 S.F. or 0.09 Ac.
 Drainage & Utility Esmt.: 4,271 Sq. Ft.
 or 0.10 Ac. ±



Samuel J. Seymour & Judy Seymour
 Tax Map 21 Block 15 Parcel 23
 Liber 1372, Folio 113

Cattail Creek Country Club, Inc.
 Liber 2571, Folio 102
 Cattail Creek Overlook
 Open Space Lot 2
 Plat No. 9793
 See I. 2571 f. 0102

Frances B. Devlin
 Tax Map 21 Block 15 Parcel 28
 Liber 521, Folio 412

GENERAL NOTES

1. Certain existing right-of-way lines shown hereon are based on a 30' prescriptive easement as defined by Howard County Real Estate Services Division.
2. Horizontal datum shown hereon is based upon Howard County Geodetic Control Stations 100 & 124 as extended by Schmid, Pfeltz & McDonald, Inc.
3. The plat of "Cattail Creek Overlook" was rotated to the NAD '83 Grid Meridian based on surveys performed by Boyd and Dowgiallo, P.A. in August, 1995.

LEGEND

- Temporary Slope Esmt. For Driveway Adjustment: 1,234 Sq. Ft. or 0.03 Ac. ±
- Fee Simple Acquisition: 3,790 Sq. Ft. or 0.09 Ac. ±
- Drainage & Utility Easement: 4,271 Sq. Ft. or 0.10 Ac. ±

Bonnie Best-Free
 11/6/96

FILED NOV 05 1996

APPROVED: DEPARTMENT OF PUBLIC WORKS
Elizabeth Anderson Calver 4/8/96
 CHIEF: TRANSPORTATION PROJECTS AND WATERSHED MANAGEMENT DIVISION

Tina O. Hackett 7/6/95
 CHIEF: REAL ESTATE SERVICES DIVISION

REVISIONS

HOYD & DOWGIALLO, P.A. REG.# 171
Anthony L. Dowgiallo 10-19-95
 Anthony L. Dowgiallo
 Professional Land Surveyor #9435

BOYD & DOWGIALLO, P.A.
 ENGINEERS*PLANNERS*SURVEYORS
 405 Headquarters Drive
 Suites 7 & 8
 Millersville, Maryland 21108
 (410) 987-2500

DRAWN BY: CK CHECKED BY: JT

HOWARD COUNTY DEPARTMENT OF PUBLIC WORKS
DORSEY MILL ROAD BRIDGE REPLACEMENT
 CAPITAL PROJECT B-3827
 RUSSELL S. MAISEL SR. & JANEVA R. MAISEL
 TAX MAP 21 BLOCK 15
 PARCEL 27

PROJECT NAME: DORSEY MILL ROAD SCALE: 1"=50'
 SHEET NO. 1 OF 1
 DATE: OCT., 1995 PROJECT NO.: B-3827 JOB NO.:
 PLAT NO.: B-3827-1