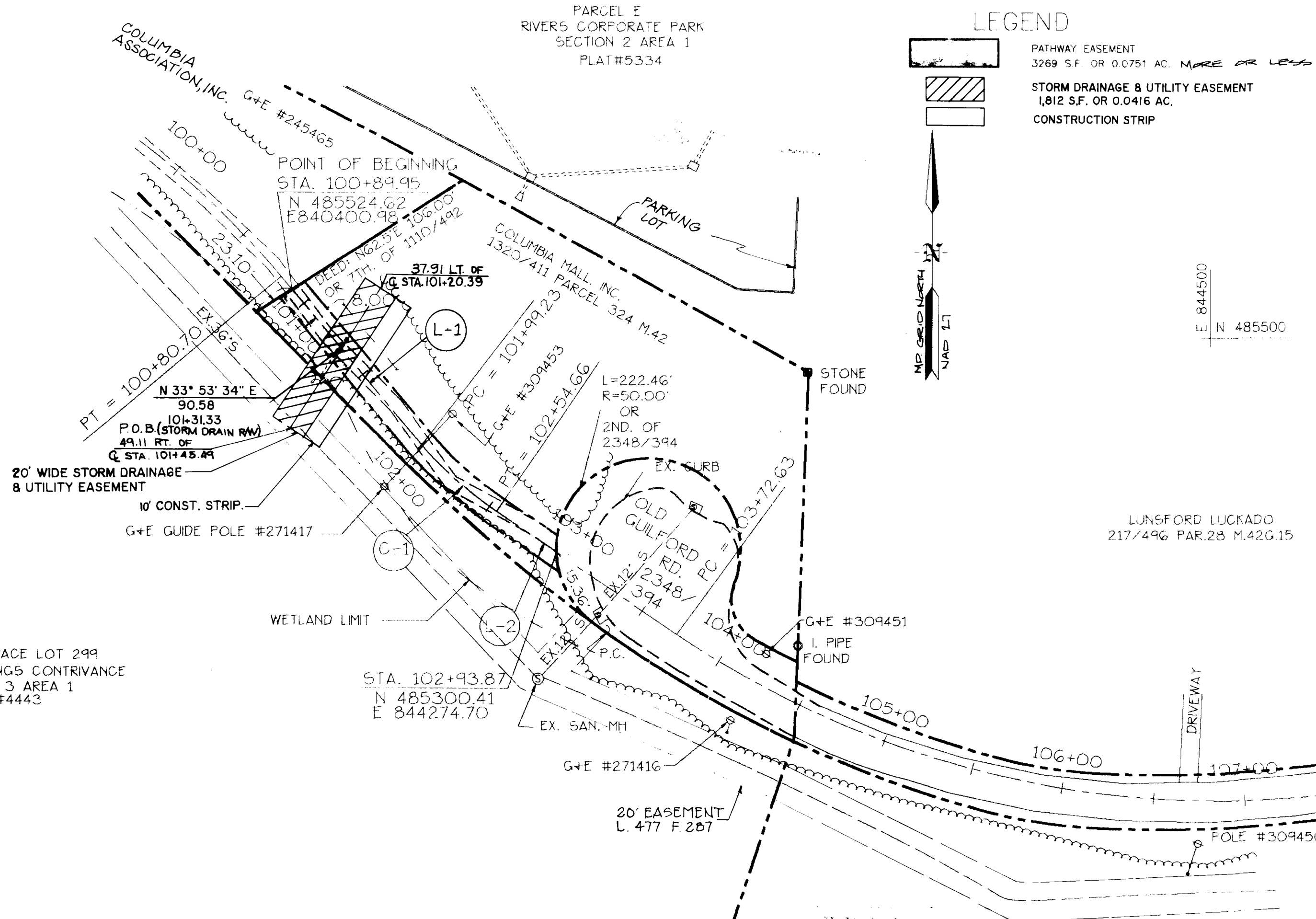
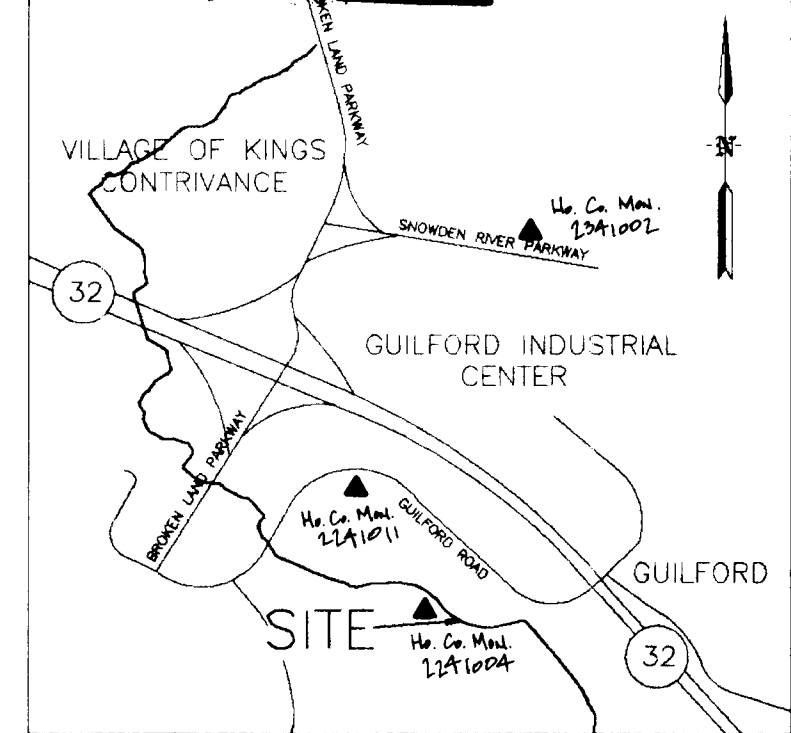


NCTE: COORDINATES SHOWN HEREON ARE BASED ON HOWARD COUNTY GEODETIC SYSTEM POINT NOS. 2341002 & 2241011, NAD 27 DATUM.



LEGEND

- PATHWAY EASEMENT
3269 S.F. OR 0.0751 AC. MORE OR LESS
- STORM DRAINAGE & UTILITY EASEMENT
1,812 S.F. OR 0.0416 AC.
- CONSTRUCTION STRIP



VICINITY MAP
SCALE: 1" = 2000'

OPEN SPACE LOT 299
VILLAGE OF KINGS CONTRIVANCE
SECTION 3 AREA 1
PLAT#4443

LUNSFORD LUCKADO
217/496 PAR.28 M.42G.15

LINE DATA

LINE	DIRECTION	DISTANCE
L-1	S40°01'18"E	109.28'
L-2	S55°54'00"E	39.21'

CURVE DATA

CURVE	RADIUS	LENGTH	TANGENT	CHORD	BEARING	DELTA
C-1	200.00'	55.43'	27.89'	55.25'	S47°57'39"E	15°52'43"

Bonnie Best - Fee
10/10/96

OPEN SPACE LOT 281
VILLAGE OF KINGS CONTRIVANCE
SECTION 3 AREA 1
PLAT#4232

FILED OCT 10 1996

- NOTE:
- For site control see contract drawings.
 - Boundary based on a field run survey performed on or about March, 1994.

I HEREBY CERTIFY TO THE BEST OF MY KNOWLEDGE AND BELIEF THAT THE STORM DRAINAGE & UTILITY EASEMENTS SHOWN HEREON ARE CORRECT.

Kenneth A. Ramsay 6-6-96
KENNETH A. RAMSAY
PROFESSIONAL LAND SURVEYOR
MD. REG. NO. 10702

TO THE BEST OF MY KNOWLEDGE AND BELIEF
Warren W. Sorg 3/22/94
WARREN W. SORG
PROFESSIONAL LAND SURVEYOR MD. NO. 10858

No.	REVISION	BY	DATE
#1	ADD STORM DRAINAGE EASEMENTS	G.W.D.	05-96
#2	REVISE POB STA. & LINE WORK	G.W.D.	07-96

PLAT NO. N-3906JJ-19
HOWARD COUNTY DEPARTMENT OF PUBLIC WORKS
PATHWAY EASEMENT
COLUMBIA MALL, INC.
TAX MAP 42 PARCEL 324 LIBER 1320 FOLIO 411
6TH. ELECTION DISTRICT HOWARD COUNTY, MARYLAND

APPROVED
REAL ESTATE SER. DIV.
John D. Hackett
BUR. OF ENGINEERING
Kenneth A. Ramsay

PREPARED BY:
gpi
GREENMAN--PEDERSEN INC.
ENGINEERS/ARCHITECTS/PLANNERS/SURVEYORS
14504 GREENVIEW DRIVE, SUITE 100
LAUREL, MD. 20708
WASH. (301) 470-2772 BALT. (410) 880-3055
DRAWN BY: NB & C.L.I.
CHECKED BY: W.W.S.