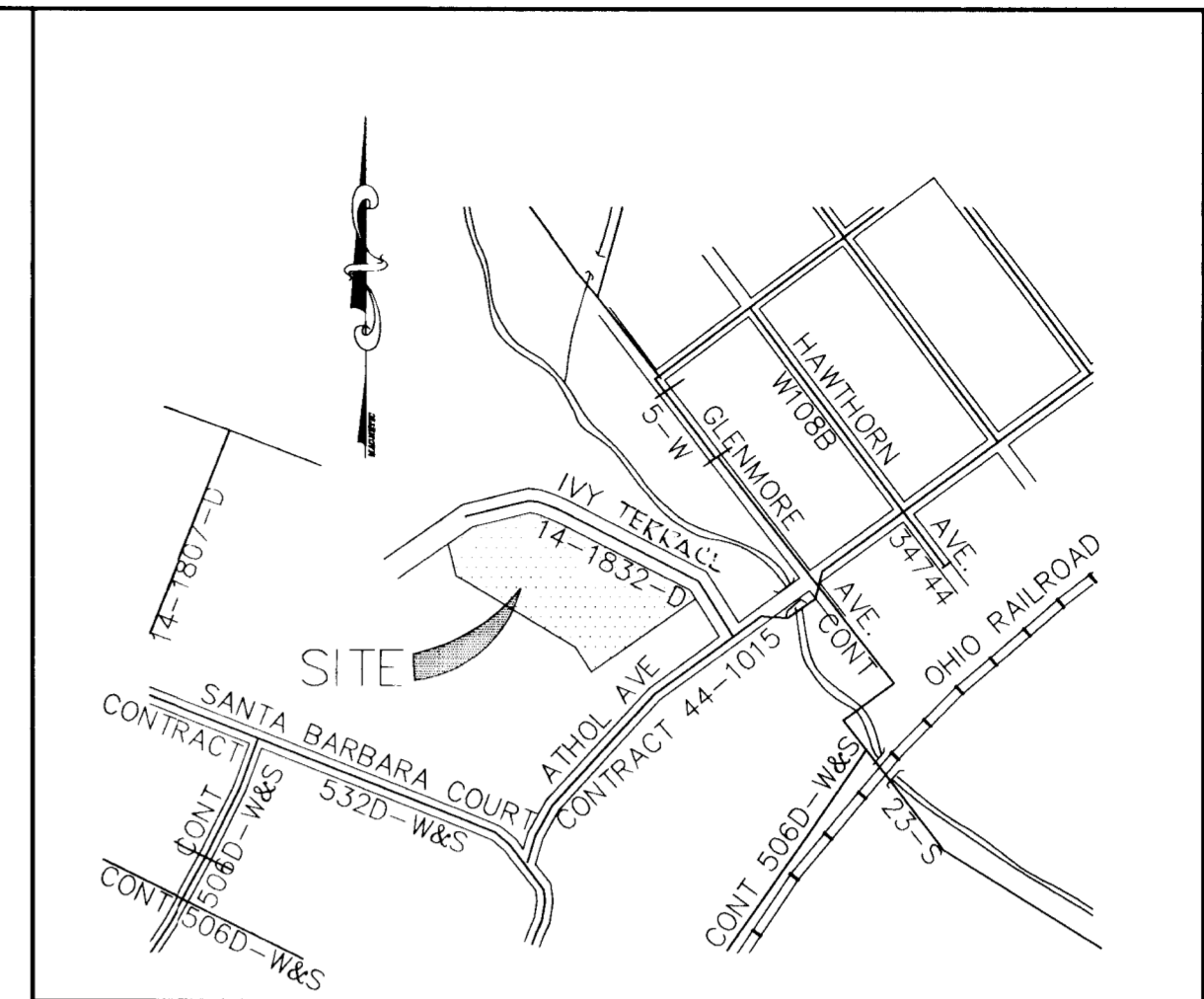


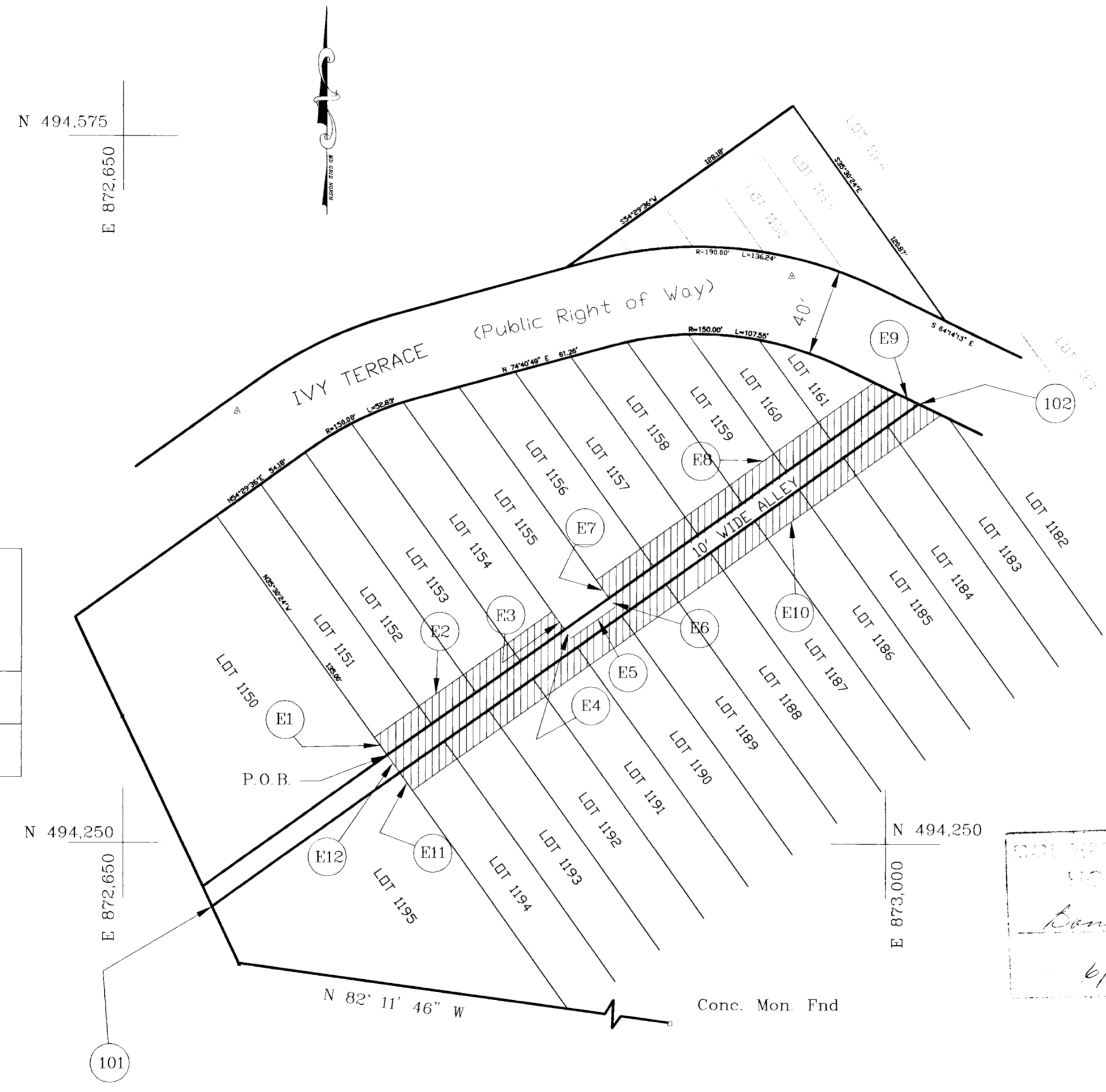
LINE TABLE		
No.	Bearing	Dist.
E1	N 35° 30' 24" W	10.00
E2	N 54° 29' 36" E	100.00
E3	S 35° 30' 24" E	10.00
F4	S 35° 30' 24" E	5.00
E5	N 54° 29' 36" E	25.00
E6	N 35° 30' 24" W	5.00
E7	N 35° 30' 24" W	10.00
E8	N 54° 29' 36" E	156.66
E9	S 64° 14' 13" E	34.21
E10	S 54° 29' 36" W	298.10
E11	N 35° 30' 24" W	10.00
E12	N 35° 30' 24" W	10.00

COORDINATE TABLE		
101	N 494220.8904	E 872790.9773
102	N 494452.2551	E 873115.2596



VICINITY MAP
SCALE 1" = 600'

PLAT-M.D.R. NO. 11776



- Notes:
1. Boundary indicated hereon is based on field run surveys performed by Boender Associates, Inc. in March 1995, as verified by this office.
 2. Coordinates shown are based on Howard County Control Stations 2647005 and 2647006, NAD 27.
 3. Easment area is shown cross hatched.

HOWARD COUNTY
Bonnie Sue - Free
6/30/95

Area of Easement = 8321 sq. ft. or 0.19 acres +/-

Plat No. S-6695-2

[Signature]
John H. Mildenberg
Prof. Land Surveyor
Md. Reg. No. 10718

**MILDENBERG,
BOENDER & ASSOC., INC.**
Engineers Planners Surveyors
5072 Dorsey Hall Drive, Suite 202, Ellicott City, Maryland 21042
(410) 997-0296 Balt. (301) 621-5521 Wash. (410) 997-0298 Fax.

Engineering	JBM		
Illustration	JBM		
Approval			
Project	95018		
Date	June 2, 1995	NO. REVISION	By DATE

Howard County Department of Public Works
Water, Sewer and Utility Easement
ROGERS AVENUE REALTY
TAX MAP 39 PARCEL 873 - Lots 1151 through 1154 and 1156 through 1162 & 1182 through 1194
1ST ELECTION DISTRICT
HOWARD COUNTY, MARYLAND

Approved
[Signature] 6-7-95
Bur. of Eng. Date
Tina D. Hackett 6/7/95
Real Estate Ser. Div. Date