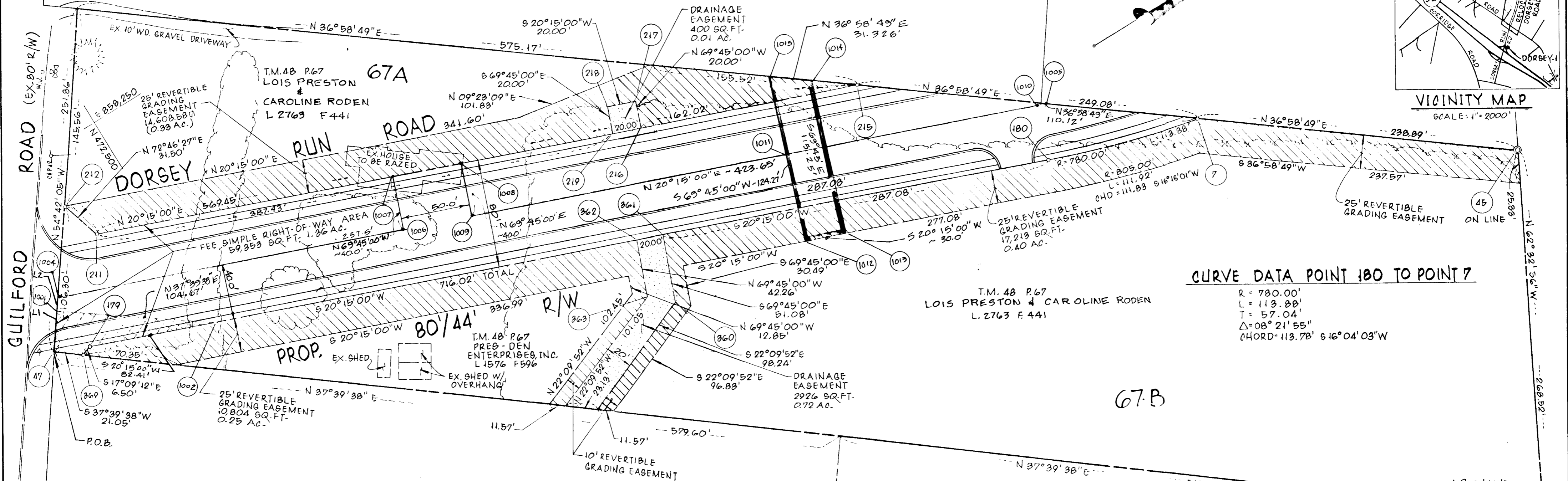
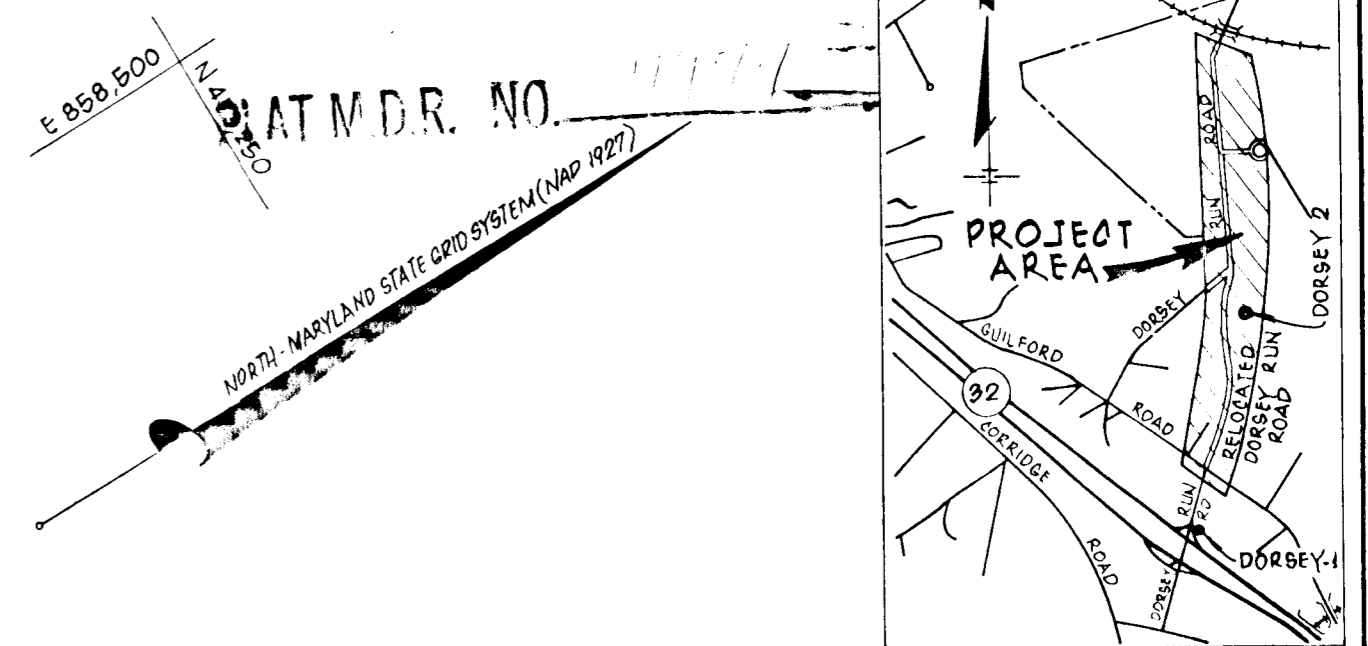


BEARING TABLE
 L1 - N54°42'05"W --30.00'
 L2 - N54°42'05"W --8.99'

CURVE DATA: PT. 1010 TO PT. 1005
 R=740.00'
 L=8.016'
 T=4.008'
 $\Delta=00^{\circ}37'14''$
 CHORD=8.016' - N20°15'00"E

T.M. 48 P.66
 EAST COAST SWEEPING, INC.
 L 2313 F 547



CURVE DATA POINT 180 TO POINT 7

R = 780.00'
 L = 113.88'
 T = 57.04'
 $\Delta = 08^{\circ}21'55''$
 CHORD = 113.78' S16°04'03"W

T.M. 48 P.67
 LOIS PRESTON & CAROLINE RODEN
 L. 2763 F. 441

67.B

COORDINATES		
POINT	NORTH	EAST
1001	472402.282	858353.475
1002	472486.143	858417.427
1004	472408.477	858346.139
1005	473101.958	858601.977
1006	472650.061	858435.264
1007	472663.905	858397.736
1008	472710.815	858415.042
1009	472696.970	858452.570
1010	473094.437	858599.203
1012	472894.479	858594.717
1013	472922.624	858605.100
1014	472962.514	858496.974
1015	472937.489	858478.131

COORDINATES		
POINT	NORTH	EAST
7	473,189.928	858,668.221
45	473,380.767	858,811.925
47	472,385.947	858,377.960
179	472,408.829	858,388.904
180	473,080.593	858,636.730
211	472,456.698	858,321.294
212	472,447.369	858,291.205
215	472,990.954	858,518.390
216	472,838.951	858,462.314
217	472,845.873	858,443.550
218	472,827.109	858,436.627
219	472,820.187	858,455.391
260	472,793.582	858,585.290
261	472,811.261	858,597.369
262	472,792.498	858,530.447
263	472,777.871	858,570.095
269	472,402.613	358,390.823

FEE SIMPLE AREA TABULATION

PRES-DEN ENTERPRISES, INC. PARCEL 67
 SQUARE FEET = 59,853 MORE OR LESS
 ACRES = 1.36 MORE OR LESS

AREA TABLE

DRAINAGE EASEMENT	REVERTIBLE GRADING EASEMENT
3,326 SQ. FT. (0.08 AC.)	42,625 SQ. FT. (0.978 AC.)

GENERAL NOTES

- COORDINATES SHOWN HERE ON ARE BASED ON 'NAD 27' MARYLAND COORDINATE SYSTEM AS PROJECTED BY HOWARD COUNTY GPS CONTROL STATIONS DORSEY-1 AND DORSEY-2.
- THIS PLAT IS BASED ON A FIELD RUN MONUMENTED BOUNDARY SURVEY PERFORMED ON OR ABOUT APRIL, 1992 PERFORMED UNDER THE SUPERVISION OF THE HOWARD COUNTY, DEPARTMENT OF PUBLIC WORKS SURVEY/DRAFTING DIVISION.

REMAINING AREA TABULATION

PARCEL 67-A - 1.12 ACRES, MORE OR LESS
 PARCEL 67-B - 3.93 ACRES, MORE OR LESS

LEGEND

- ⊙ IRON PIPE FOUND
- IRON BAR & CAP SET
- ▨ REVERTIBLE GRADING EASEMENT
- TEMPORARY ACCESS EASEMENT FOR INGRESS AND EGRESS. 32,319,198 SQ. FT., 0.742 ACRE, MORE OR LESS.
- ▩ WATER, SEWER AND GAS EASEMENT. 1721,412 SQ. FT., 0.040 ACRE MORE OR LESS.
- 30' EASEMENT FOR ELECTRIC 1864,002 SQ. FT., 0.043 ACRE, MORE OR LESS

APPROVED: DEPARTMENT OF PUBLIC WORKS

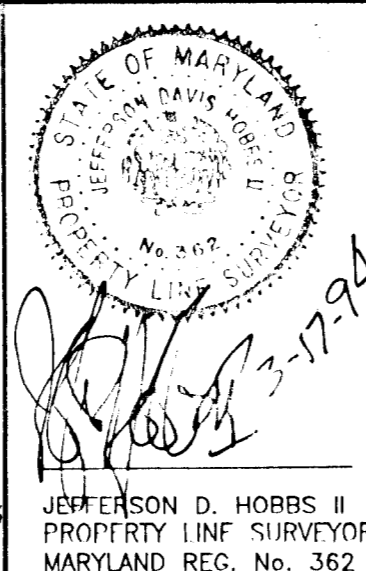
REVISIONS

CHIEF: TRANSPORTATION & WATER SHED DIVISION

CHIEF SURVEY AND DRAFTING DIVISION

Tina D. Heckert
 CHIEF: REAL ESTATE SERVICES DIVISION

REV. #1 - PREVIOUS DELINEATED WETLANDS REMOVED PER M.D.E. LETTER DATED 9/27/95
 J.D.H./W.M.H.



HOWARD COUNTY DEPARTMENT OF PUBLIC WORKS

LOIS PRESTON AND CAROLINE RODEN - PAR. 67

TO
 HOWARD COUNTY, MARYLAND

PROJECT NAME: DORSEY RUN ROAD SOUTH LINK SCALE: 1"=50'

SHEET No. _____

JOB No. _____

DATE: NOVEMBER, 1993 PROJECT No.: J-4110 PLAT No. J-4110-1