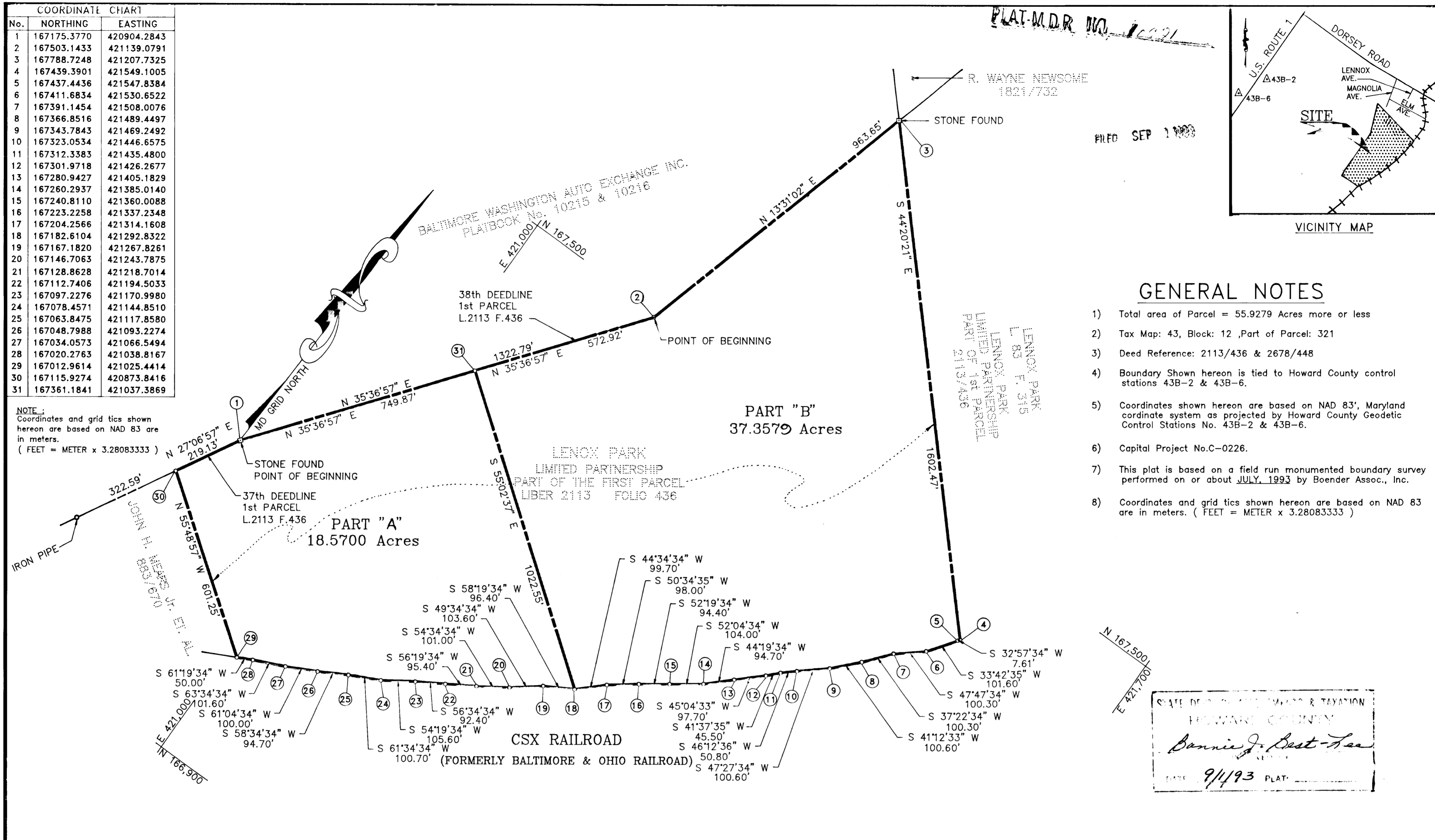


COORDINATE CHART		
No.	NORTHING	EASTING
1	167175.3770	420904.2843
2	167503.1433	421139.0791
3	167788.7248	421207.7325
4	167439.3901	421549.1005
5	167437.4436	421547.8384
6	167411.6834	421530.6522
7	167391.1454	421508.0076
8	167366.8516	421489.4497
9	167343.7843	421469.2492
10	167323.0534	421446.6575
11	167312.3383	421435.4800
12	167301.9718	421426.2677
13	167280.9427	421405.1829
14	167260.2937	421385.0140
15	167240.8110	421360.0088
16	167223.2258	421337.2348
17	167204.2566	421314.1608
18	167182.6104	421292.8322
19	167167.1820	421267.8261
20	167146.7063	421243.7875
21	167128.8628	421218.7014
22	167112.7406	421194.5033
23	167097.2276	421170.9980
24	167078.4571	421144.8510
25	167063.8475	421117.8580
26	167048.7988	421093.2274
27	167034.0573	421066.5494
28	167020.2763	421038.8167
29	167012.9614	421025.4414
30	167115.9274	420873.8416
31	167361.1841	421037.3869

NOTE:
Coordinates and grid ties shown hereon are based on NAD 83 are in meters.
(FEET = METER x 3.28083333)



FILED SEP 1 1993

GENERAL NOTES

- Total area of Parcel = 55.9279 Acres more or less
- Tax Map: 43, Block: 12, Part of Parcel: 321
- Deed Reference: 2113/436 & 2678/448
- Boundary Shown hereon is tied to Howard County control stations 43B-2 & 43B-6.
- Coordinates shown hereon are based on NAD 83', Maryland coordinate system as projected by Howard County Geodetic Control Stations No. 43B-2 & 43B-6.
- Capital Project No.C-0226.
- This plat is based on a field run monumented boundary survey performed on or about JULY, 1993 by Boender Assoc., Inc.
- Coordinates and grid ties shown hereon are based on NAD 83 are in meters. (FEET = METER x 3.28083333)

STATE DEPARTMENT OF LANDS & TAXATION
HOWARD COUNTY
Bonnie J. Best-Lee
DATE 9/1/93 PLAT

APPROVED: REAL ESTATE SERVICES DIVISION
Twin D. Hackett 8/12/93
REAL ESTATE SERVICES DIVISION DATE

APPROVED: BUREAU ENVIRONMENTAL SERVICES
John J. O'Hara 8/11/93
BUREAU ENVIRONMENTAL SERVICES DATE

PLAT No. : C-0226-1
CAPITAL PROJECT No. C-0226



SURVEYOR'S CERTIFICATE

I hereby certify that the final plat shown hereon is correct that it is a subdivision of part of the first parcel of land that was granted and conveyed by MARYLAND NATIONAL BANK and ROBERT M. GOLDMAN, surviving Trustees under the will of RITA S. GOLDMAN to NEWSOME-DORSEY INDUSTRIAL PARK LIMITED PARTNERSHIP by deed dated January 8, 1990 and recorded among the Land Records of Howard County, Maryland in Liber 2113 at Folio 436, said NEWSOME-DORSEY INDUSTRIAL PARK LIMITED PARTNERSHIP having been changed to LENOX PARK LIMITED PARTNERSHIP by an Amendment to Certificate of Limited Partnership, dated July 27, 1992 and recorded among the aforesaid Land Records in Liber 2678 at Folio 448 and that all monuments are in place as shown in accordance with the Howard County Subdivision Regulations and the Annotated Code of Maryland as amended.

William G. Hartel 8-4-93
William G. Hartel, Professional Land Surveyor, Md. No. 9436 Date

RECORDED AS PLAT ON AMONG THE LAND RECORDS OF HOWARD COUNTY, MD.

HOWARD COUNTY DEPARTMENT OF PUBLIC WORKS
FEE SIMPLE ACQUISITION
LENOX PARK
LIMITED PARTNERSHIP PROPERTY
1st ELECTION DISTRICT HOWARD COUNTY, MARYLAND

TAX MAP : 43
PART OF PARCEL No. : 321
EX ZONING : M12
1st ELECTION DISTRICT
HOWARD COUNTY, MARYLAND
SCALE : 1" = 200'
DATE : AUGUST, 1993

Boender Associates
INCORPORATED
ENGINEERS • PLANNERS • SURVEYORS
3230 BETHANY LANE
ELLCOTT CITY, MD. 21042
(410) 465-7777 FAX: (410) 465-7966

PROJECT No. : 93091