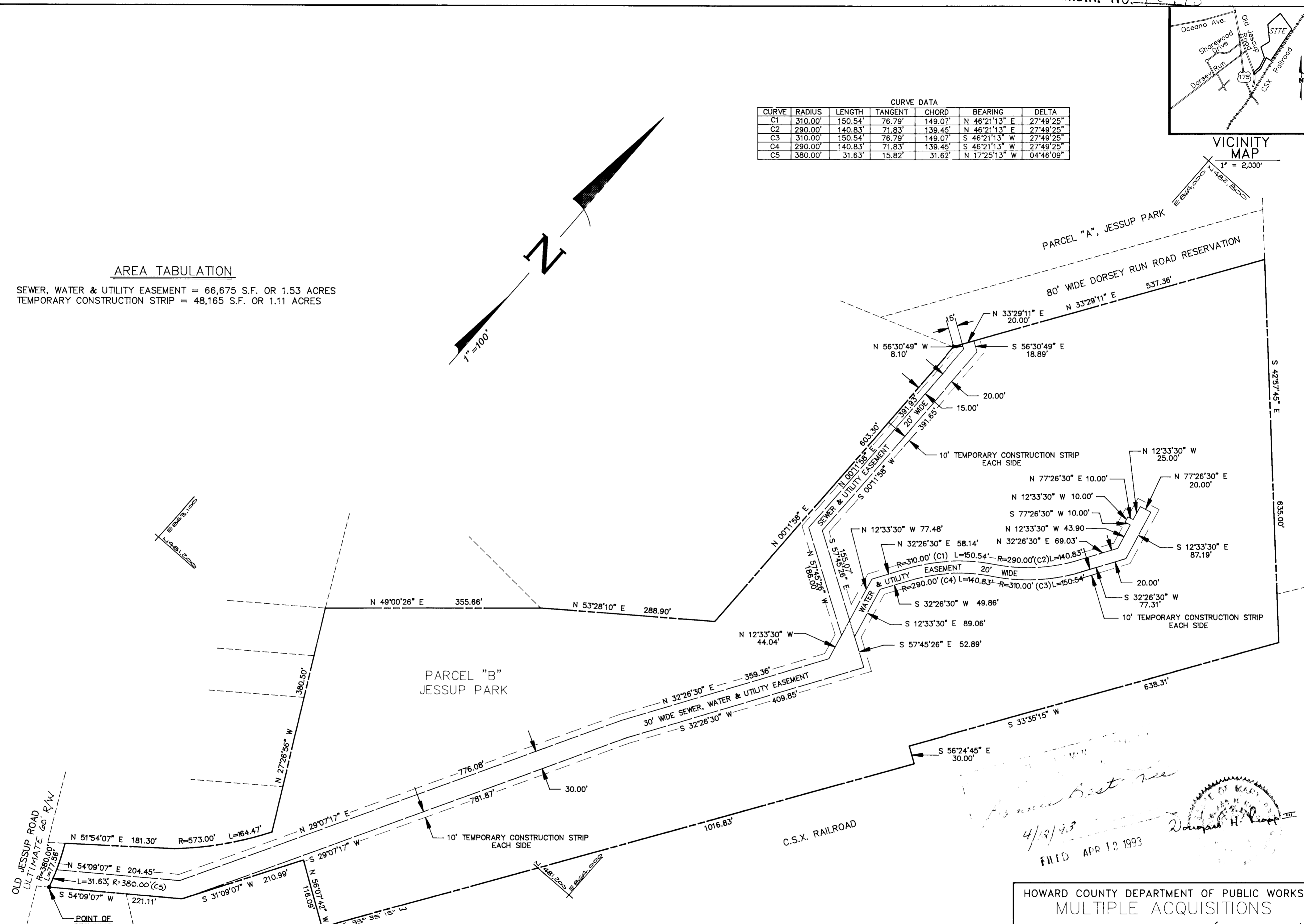
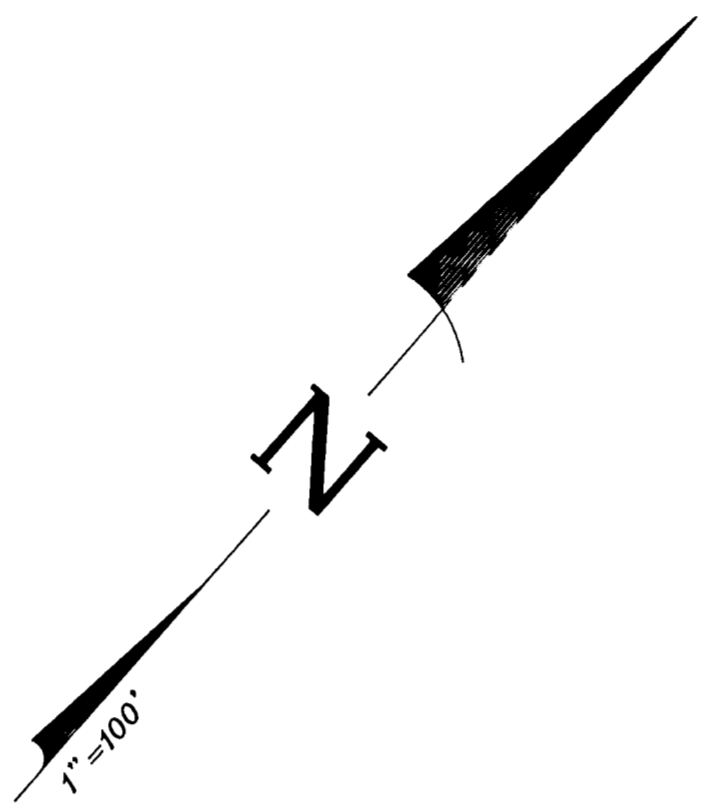


CURVE DATA

CURVE	RADIUS	LENGTH	TANGENT	CHORD	BEARING	DELTA
C1	310.00'	150.54'	76.79'	149.07'	N 46°21'13" E	27°49'25"
C2	290.00'	140.83'	71.83'	139.45'	N 46°21'13" E	27°49'25"
C3	310.00'	150.54'	76.79'	149.07'	S 46°21'13" W	27°49'25"
C4	290.00'	140.83'	71.83'	139.45'	S 46°21'13" W	27°49'25"
C5	380.00'	31.63'	15.82'	31.62'	N 17°25'13" W	04°46'09"

AREA TABULATION

SEWER, WATER & UTILITY EASEMENT = 66,675 S.F. OR 1.53 ACRES  
 TEMPORARY CONSTRUCTION STRIP = 48,165 S.F. OR 1.11 ACRES



*James Best*  
 4/12/93  
 FILED APR 12 1993  
 [Seal of Howard County, Maryland]

HOWARD COUNTY DEPARTMENT OF PUBLIC WORKS  
 MULTIPLE ACQUISITIONS  
 WILLIAM T. WHEELER (TRUSTEE)

**Macris, Hendricks and Glascock, P.A.**  
 Engineers • Planners • Surveyors  
 Suite 120  
 9220 Wightman Road  
 Gaithersburg, Maryland 20879  
 (301) 670-0840

Designed M.D.P.  
 Job No. 87-215  
 PLAT NO. CAP. PROJECT: N/A  
 SCALE: 1"=100'  
 DATE: OCTOBER 1992  
 REV:  
 APPROVED LAND ACQUISITION DATE:  
 BUREAU OF ENGINEERING  
 [Signature] DATE: 2/19/93