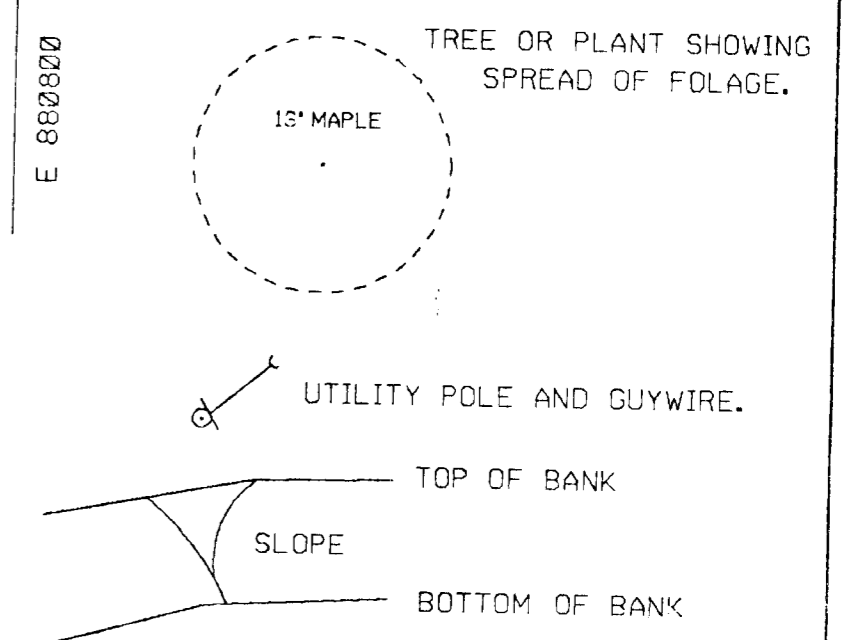


VICINITY MAP
NO SCALE

NOTES

- COORDINATES SHOWN HEREON ARE BASED ON NAD 1927, MARYLAND STATE GRID PLAN AS PROJECTED BY HOWARD COUNTY COUNTY GEODETIC CONTROL STATIONS No. 2648003 AND No. 2648004.
- THIS PLAT IS BASED ON A FIELD RUN BOUNDARY SURVEY PERFORMED ON OR ABOUT MAY 8, 1991 BY HOWARD COUNTY DEPARTMENT OF PUBLIC WORKS.
- FEE SIMPLE ACQUISITION OF PART OF THAT PARCEL OF LAND BELONGING TO JOHN A. SHAAH, SR. AS RECORDED IN LIBER 906 FOLIO 401 ON SEPTEMBER 8, 1978 AMONG THE LAND RECORDS OF HOWARD COUNTY, MARYLAND.

LEGEND



COORDINATE TABLE

POINT NUMBER	NORTH	EAST
189	501002.22	880558.96
200	500999.86	880559.77
201	500985.36	880561.80
202	500907.01	880623.56
203	500892.61	880631.79
204	500842.08	880678.22
183	500838.92	880673.35
184	500996.68	880550.43

PROPERTY LINE TABLE

LINE	BEARING	DISTANCE
189 to 200	S 19°01'23" E	2.49'
200 to 201	S 07°58'06" E	14.63'
201 to 202	S 38°14'47" E	99.76'
202 to 203	S 29°45'14" E	16.59'
203 to 204	S 42°34'30" E	68.62'
204 to 183	S 56°58'09" W	5.80'
183 to 184	N 37°55'29" W	200.00'
184 to 189	N 56°58'09" E	10.17'

LINE REFERENCE TABLE

LINE	DEED REFERENCE
183 to 184	4th. LINE LIBER 906 FOLIO 401

AREA TABULATION

- FEE SIMPLE ACQUISITION
555 SQUARE FEET MORE OR LESS
0.013 ACRES MORE OR LESS
- REVERTABLE SLOPE EASEMENT
117 SQUARE FEET MORE OR LESS
0.003 ACRES MORE OR LESS
- REMAINDER OF LIBER 906 FOLIO 401
29,327 SQUARE FEET MORE OR LESS
0.6733 ACRES MORE OR LESS



APPROVED: DEPARTMENT OF PUBLIC WORKS

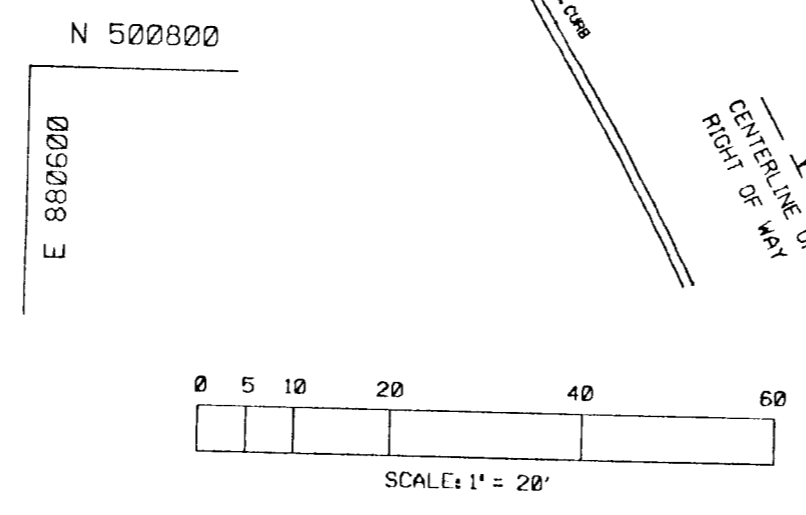
BUREAU OF ENGINEERING

JEFFERSON D. HOBBS II
PROPERTY LINE SURVEYOR
MARTYLAND REG. No. 362

DATE: AUGUST 5, 1991

REVISIONS

JEFFERSON D. HOBBS II
PROPERTY LINE SURVEYOR
MARTYLAND REG. No. 362



HOWARD COUNTY DEPARTMENT OF PUBLIC WORKS

FEE SIMPLE ACQUISITION
JOHN A. SHAAH, SR.
TO
HOWARD COUNTY, MARYLAND

PROJECT NAME: AUGUSTINE AVENUE SIDEWALK EXTENSION

SCALE: 1" = 20'

SHEET No.: 1 of 1

JOB No.: 91059

DATE: AUGUST 5, 1991 PROJECT No.: K-5020

PLAT No.: K-5020-1