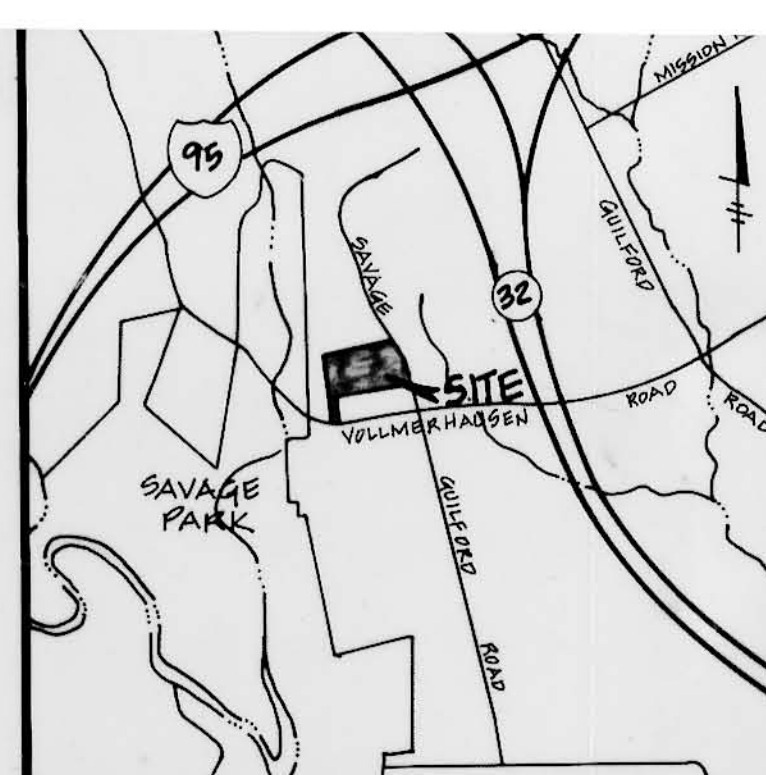


HOWARD COUNTY, MARYLAND
DEPT. OF REC. PARKS
693/458
ZONED R-20
LAND USE: OPEN SPACE

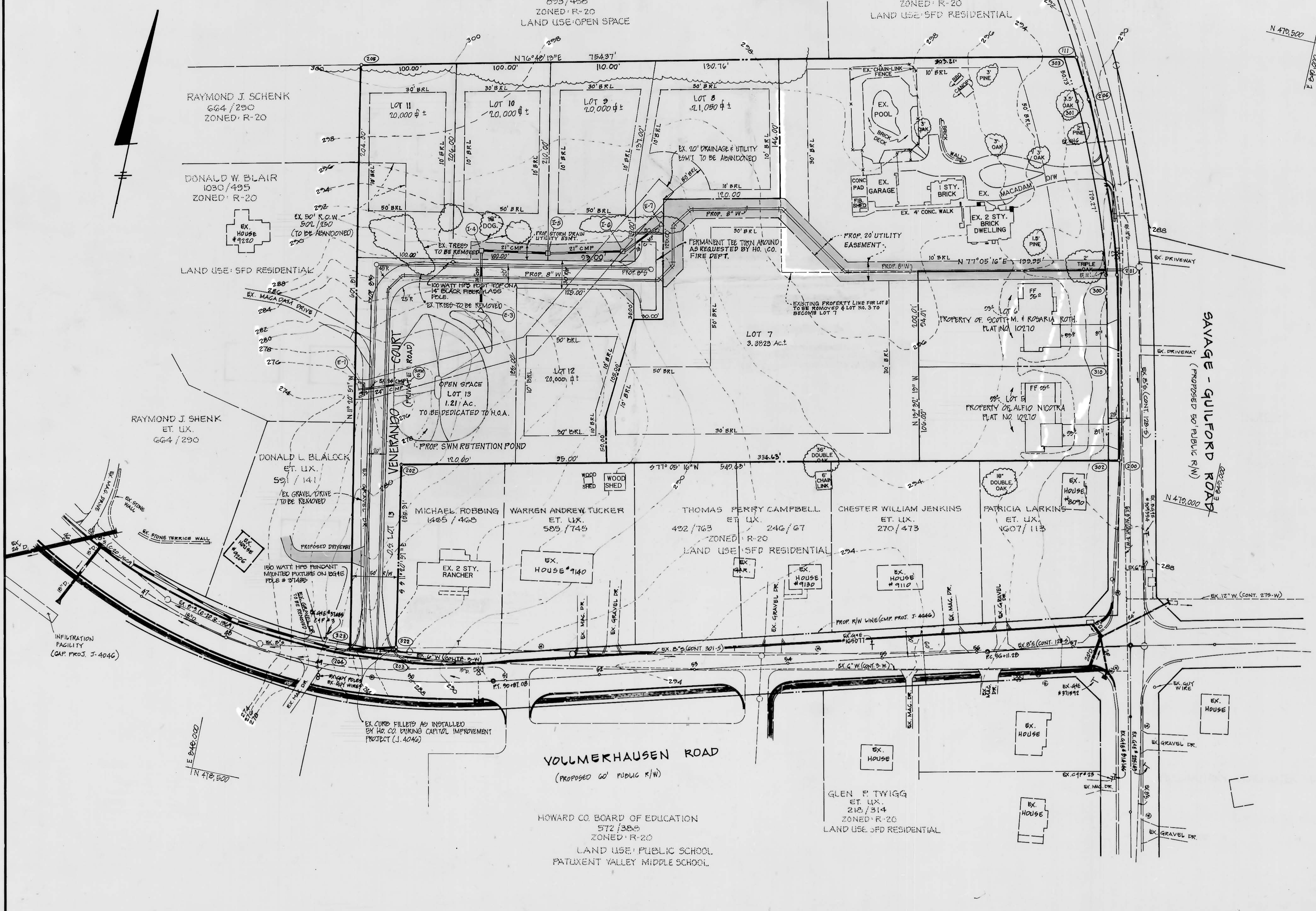
CHARLES R. BELK
1263/255
ZONED R-20
LAND USE: SFD RESIDENTIAL



VICINITY MAP
SCALE: 1" = 200'

TABLE OF COORDINATES

NO.	NORTH	EAST
111	470434.039	848753.620
200	470222.262	848871.424
201	470218.793	848845.763
202	478859.514	848151.000
203	478668.023	848187.434
204	478657.077	848180.586
205	479261.816	848047.208
206	479372.255	848716.977
300	479216.523	848826.055
301	479387.340	848768.199
302	479027.027	848881.676
303	479431.666	848743.527
322	478677.830	848817.466
323	478666.884	848798.617



TENTATIVELY APPROVED
DEPT. OF PLANNING AND ZONING OF HOWARD COUNTY
[Signature] 2/19/95
PLANNING DIRECTOR DATE

PLAN
SCALE: 1" = 50'

REVISIONS

DESIGNED	DATE	BY	DESCRIPTION
K.D.H.	7/92		
DRAWN	7/92	J.P.H.	
CHECKED			
APPROVED			

LSG LAND SERVICES GROUP, INC.
ENGINEERS • PLANNERS • SURVEYORS
9801 Broken Land Parkway Suite 105 Columbia, MD 21046
Wash. (301) 621-8006
Balt. (301) 985-6010
Fax. (301) 985-6021



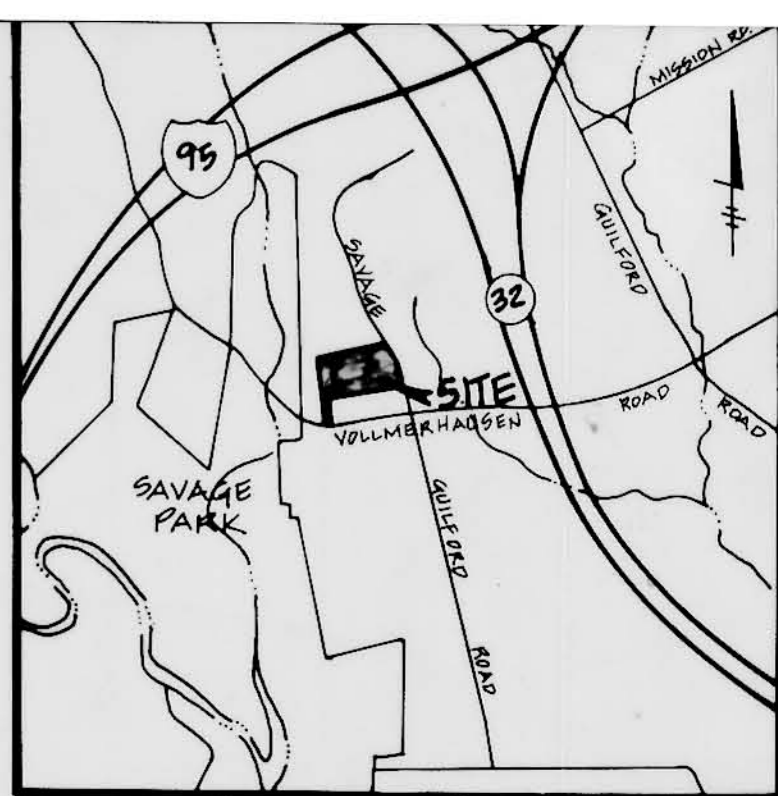
OWNER / DEVELOPER
ALFIO NICOTRA
8070 SAVAGE-GUILFORD ROAD
JESSUP, MARYLAND 20794

PRELIMINARY PLAN
PROPERTY OF
ALFIO NICOTRA
LOTS 7-13
6TH ELECTION DISTRICT HOWARD COUNTY, MARYLAND
TAX MAP 47 DATE: JULY, 1992 PARCEL 12
SCALE: 1" = 80' CONTRACT NO. FILE NO. SHEET 2 OF 3

REF. WP 91-35, 91-10, F 90-142 & F 92-101, P 92-07, WP 93-54

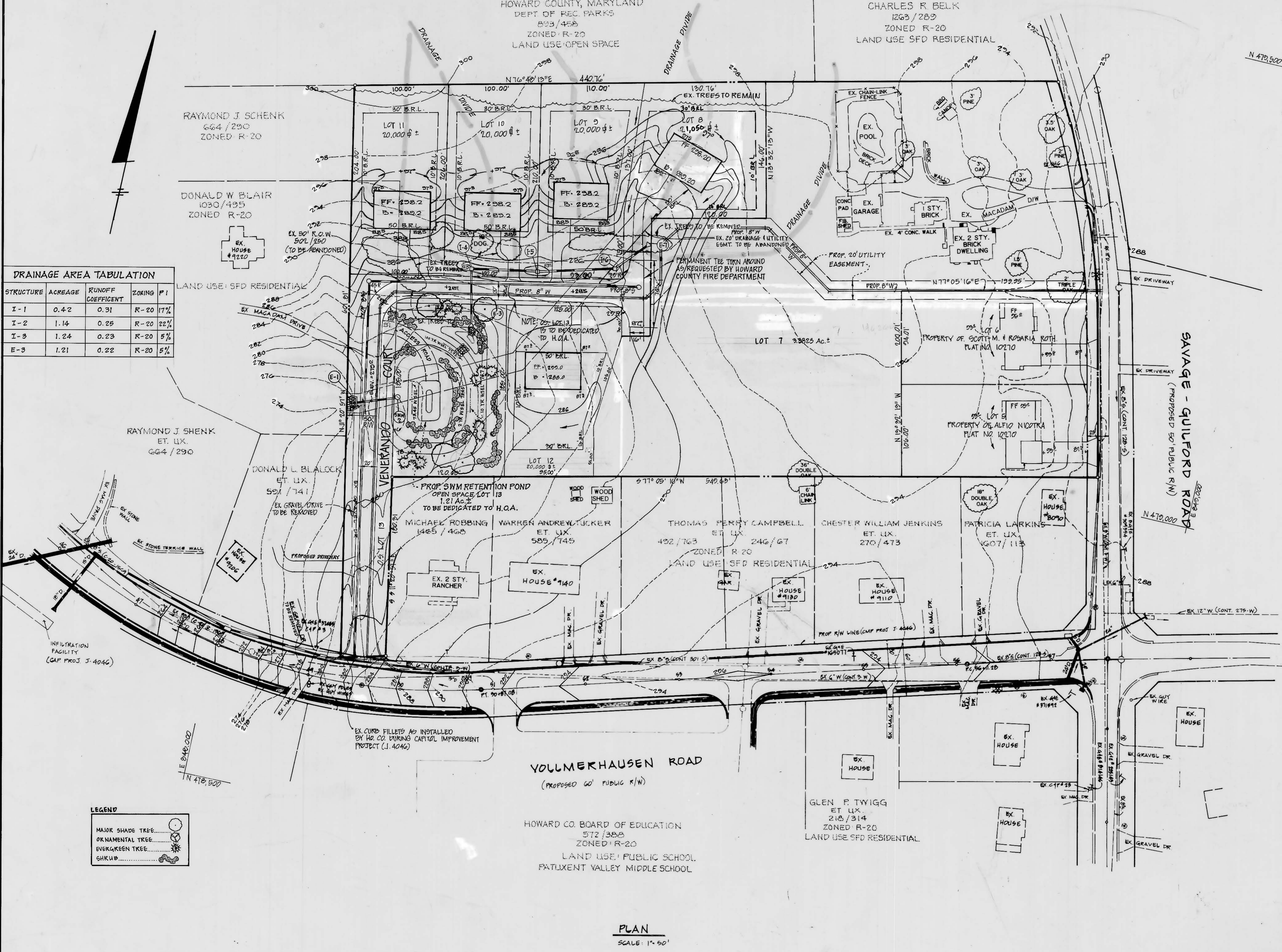
HOWARD COUNTY, MARYLAND
DEPT OF REC. PARKS
603/455
ZONED R-20
LAND USE: OPEN SPACE

CHARLES R. BELK
1263/289
ZONED R-20
LAND USE: SFD RESIDENTIAL



DRAINAGE AREA TABULATION

STRUCTURE	ACREAGE	RUNOFF COEFFICIENT	ZONING	P
I-1	0.42	0.31	R-20	17%
I-2	1.14	0.25	R-20	22%
I-3	1.24	0.23	R-20	5%
E-3	1.21	0.22	R-20	5%



LEGEND

MAJOR SHADE TREE	
ORNAMENTAL TREE	
EVERGREEN TREE	
SHRUB	

PLAN
SCALE: 1" = 50'

TEMPORARILY APPROVED
DEPT OF PLANNING AND ZONING OF HOWARD COUNTY
Planning Director *[Signature]* DATE 2/19/95
35

REVISIONS

DESIGNED	DATE	BY	DESCRIPTION
K.D.H.	7/92		
J.P.H.	7/92		
CHECKED	date		
APPROVED	date		

LSG LAND SERVICES GROUP, INC.
ENGINEERS • PLANNERS • SURVEYORS
9801 Broken Land Parkway
Suite 105
Columbia, MD 21046
Wash. (301) 621-8006
Balt. (301) 995-6010
Fax. (301) 995-6021



OWNER / DEVELOPER
ALFIO NICOTRA
8070 SAVAGE-GUILFORD ROAD
JESSUP, MARYLAND 20794

PRELIMINARY GRADING & DRAINAGE AREA MAP
PROPERTY OF
ALFIO NICOTRA
LOTS 7-13
6TH ELECTION DISTRICT HOWARD COUNTY, MARYLAND
TAX MAP 47 DATE: JULY, 1992 PARCEL 18
SCALE: 1" = 50' CONTRACT NO. FILE NO. SHEET 3 OF 3

REF. WP 91-35, 991-10, F 90-142 & F 92-101