

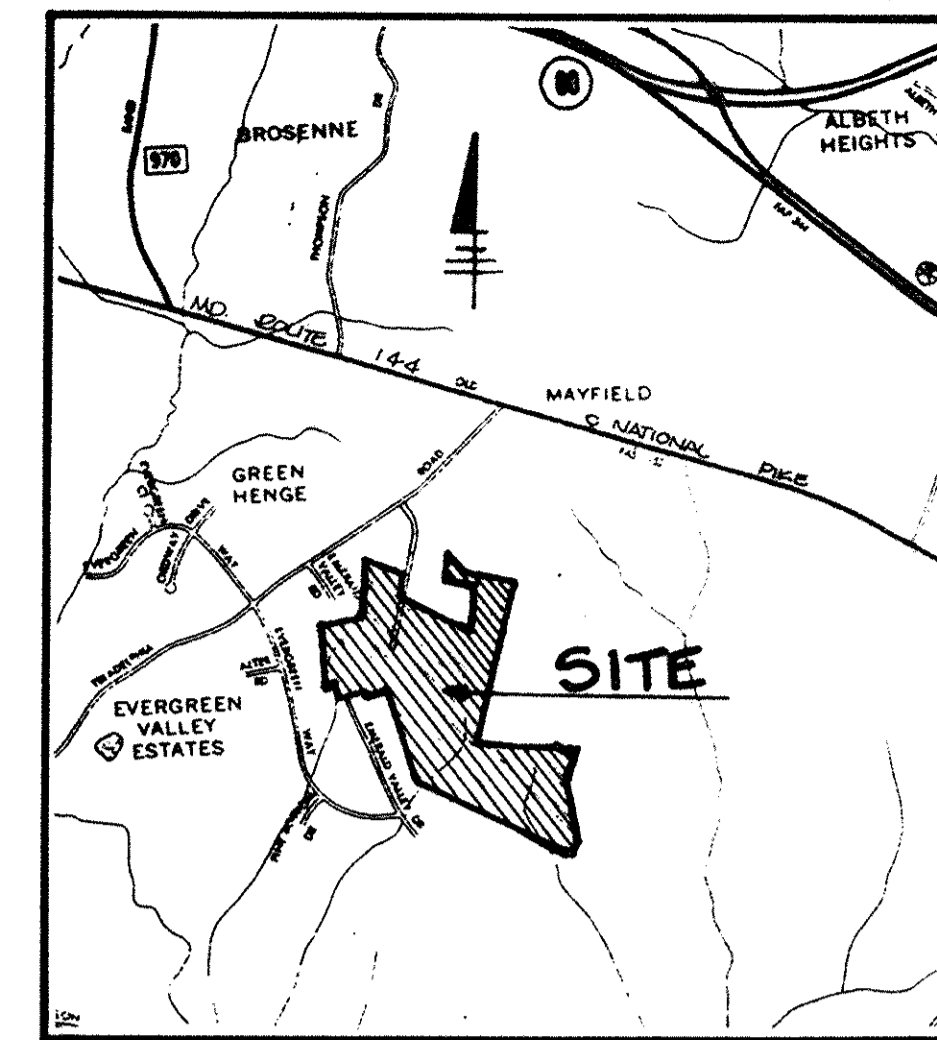
POINT	NORTHING	EASTING
00	530,592.04	821,979.83
01	530,527.36	822,022.01
03	529,959.27	821,873.85
115	528,423.97	823,896.87
116	528,484.61	823,821.56
117	528,376.35	822,767.16
118	530,019.07	823,356.84
19	530,198.13	822,822.82
126	530,134.75	821,379.69
161	530,246.26	822,610.14
162	530,141.36	822,602.31
163	529,517.08	821,885.79
164	529,555.83	822,851.06
165	530,041.56	822,971.04
166	528,178.16	823,685.30
167	527,501.83	823,700.27
168	527,374.02	823,667.25
169	527,893.24	822,030.47
840	528,798.62	821,612.77
841	528,668.51	821,829.06
842	528,707.68	821,309.27
843	528,572.11	821,020.34
844	528,629.14	820,995.92
846	529,220.07	820,873.30
847	529,487.30	821,443.04
199	530,311.96	821,973.05
200	530,870.29	821,846.38
201	530,903.29	821,893.46
202	530,790.29	821,962.93
203	530,520.45	822,072.32
204	530,574.38	822,072.49
205	530,627.11	822,061.85
201	530,687.63	822,034.22
803	530,299.58	822,021.51
845	528,689.69	820,946.82

# PRELIMINARY PLAN

# HAWKSFIELD ESTATES

## 3RD ELECTION DISTRICT

## HOWARD COUNTY, MARYLAND



**VICINITY MAP**  
SCALE 1" = 2000'

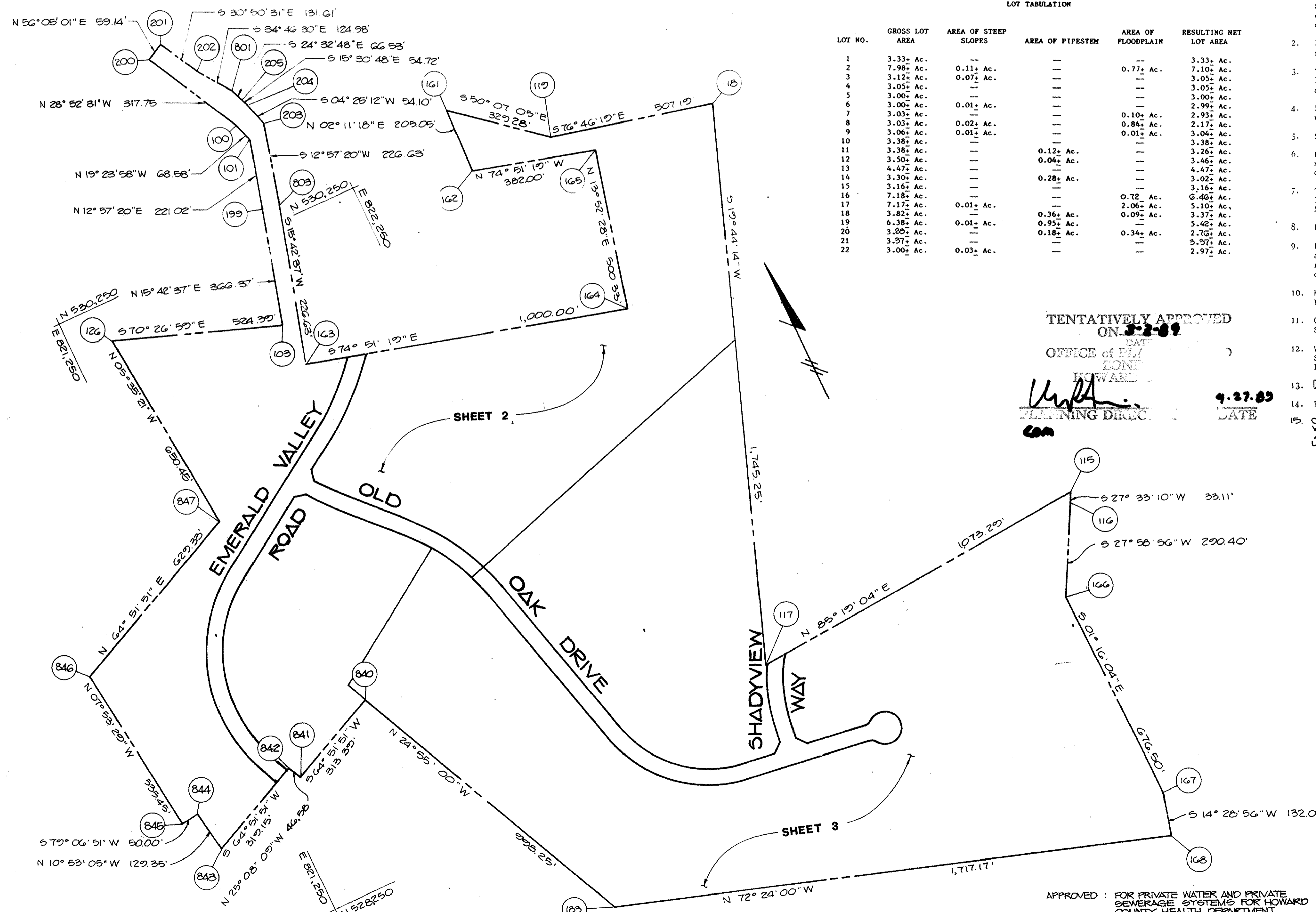
**PERC TEST DATA**

'A' NUMBER	LOT NO. NEW	LOT NO. OLD	REMARKS	AVERAGE PERC TIME IN MINUTES FOR 2nd INCH	INLET AND BOTTOM MAXIMUM DEPTH PERMITTED IN FEET
39704	1	1		6 minutes	Inlet 3.5'
39705	2	2&3	Reconfigured	4 minutes	Inlet 4.0'
39707	3	4		12 minutes	Inlet 4.0'
39708	4	5		3 minutes	Inlet 3.5'
42303	5	5&6	Reconfigured	6 minutes	Inlet 3.0'
39709	6	6		11 minutes	Inlet 4.0'
39710	7	7&8		6 minutes	Inlet 3.0'
39711	8	8		5 minutes	Inlet 3.5'
39712	9	9		10 minutes	Inlet 3.0'
39713	10	10		10 minutes	Inlet 3.0'
39714	11	11		3 minutes	Inlet 3.5'
39715	12	12		4 minutes	Inlet 3.5'
39716	13	13		3 minutes	Inlet 3.5'
39717	14	14		16 minutes	Inlet 4.5'
39718	15	15		7 minutes	Inlet 3.5'
39719	16	16		6 minutes	Inlet 3.0'
39720	17	17		10 minutes	Inlet 3.0'
42304	18	17&20	Reconfigured	4 minutes	Inlet 3.0'
39724	19	21	Reconfigured	3 minutes	Inlet 3.5'
39723	20	20	Reconfigured	5 minutes	Inlet 3.5'
39721	21	18&19	Reconfigured	4 minutes	Inlet 3.0'
39722	22	22	Reconfigured	6 minutes	Inlet 3.5'

SHEET INDEX	
NO	DESCRIPTION
1 OF 3	TITLE SHEET
2 OF 3	PRELIMINARY PLAN
3 OF 3	PRELIMINARY PLAN

**SITE TABULATION**

Present Zoning	R
Total Number of Lots	22
Total Number of Residential Lots	22
Total Area Lots	87.97 Acres
Total Area Road Right-of-way	4.734 Acres
Total Area Open Space	0 Acres
Total Area in 100-year Floodplain	500 Acres
Total Area this Submission	72.72 Acres
Water System	Private
Sewer System	Private



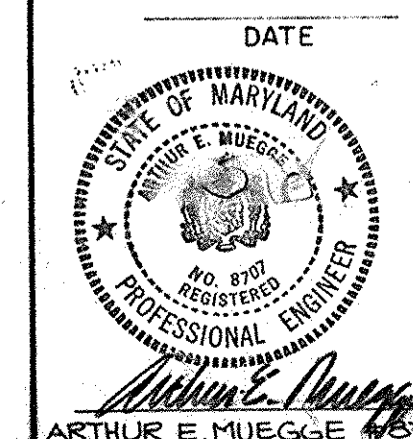
LOT NO.	GROSS LOT AREA	AREA OF STEEP SLOPES	AREA OF PIPESTEM	AREA OF FLOODPLAIN	RESULTING NET LOT AREA
1	3.33 Ac.	—	—	—	3.33 Ac.
2	7.98 Ac.	0.11 Ac.	—	0.77 Ac.	7.10 Ac.
3	3.12 Ac.	0.07 Ac.	—	—	3.05 Ac.
4	3.05 Ac.	—	—	—	3.05 Ac.
5	3.00 Ac.	—	—	—	3.00 Ac.
6	3.00 Ac.	0.01 Ac.	—	—	2.99 Ac.
7	3.03 Ac.	—	—	0.10 Ac.	2.93 Ac.
8	3.03 Ac.	0.02 Ac.	—	0.84 Ac.	2.17 Ac.
9	3.06 Ac.	—	—	0.01 Ac.	3.04 Ac.
10	3.38 Ac.	—	—	—	3.38 Ac.
11	3.38 Ac.	—	0.12 Ac.	—	3.26 Ac.
12	3.50 Ac.	—	0.04 Ac.	—	3.46 Ac.
13	4.47 Ac.	—	—	0.72 Ac.	4.47 Ac.
14	3.30 Ac.	—	—	—	3.02 Ac.
15	3.16 Ac.	—	—	—	3.16 Ac.
16	7.18 Ac.	—	—	0.72 Ac.	6.46 Ac.
17	7.17 Ac.	0.01 Ac.	—	2.06 Ac.	5.10 Ac.
18	3.82 Ac.	—	0.36 Ac.	0.09 Ac.	3.37 Ac.
19	6.38 Ac.	0.01 Ac.	0.95 Ac.	—	5.42 Ac.
20	3.25 Ac.	—	0.18 Ac.	0.34 Ac.	2.73 Ac.
21	3.97 Ac.	—	—	—	3.97 Ac.
22	3.00 Ac.	0.03 Ac.	—	—	2.97 Ac.

TENTATIVELY APPROVED  
ON 3-2-89  
DATE  
OFFICE OF PLANNING & ZONING  
HOWARD COUNTY  
PLANNING DIRECTOR  
4-27-89  
DATE

- NOTES:**
- The area shown thus indicates a private sewage easement of approximately 10,000 square feet as required by the Maryland State Department of Health and Mental Hygiene for individual disposal. Improvements of any kind in this area are restricted until public sewage is available and servicing any residential structures on this site. This easement shall become null and void upon connection to a public sewage. The County Health Officer shall have the authority to grant variances for encroachments into the private sewage easement. Recordation of a modified sewage easement shall not be necessary.
  - Percolation test holes shown hereon have been field located as shown. **DARK DOT - PASSING TEST**  
**OPEN CIRCLE - FAILED TEST**
  - The lots shown hereon comply with the minimum ownership width and lot areas as required by the Maryland State Department of Health and Mental Hygiene.
  - Percolation areas and water wells for adjoining lots are shown where pertinent.
  - See Office of Planning and Zoning file, S-88-52 & WP 88-72.
  - For flag or pipestem lots; refuse collection, snow removal and road maintenance are provided to the junction of flag or pipestem lot driveway.
  - The lots shown hereon comply with the minimum ownership width and lot area as required by the Maryland State Department of Health and Mental Hygiene.
  - Lot 7 limited house site - percolation adjustment not available.
  - Before excavating and grading is performed for public road 'A' or at any other location in the transportation gas and pipeline right of way test holes should be hand dug over pipeline to determine its depth and location.
  - House on Lot 14 will have a minimum servicable elevation of 472.0 based on topography shown on plan.
  - Coordinates shown hereon are based on the Maryland State Grid System as projected by stations 3337008 and 338005.
  - WP 88-72 is a waiver of section 16.115.C.1 of the Howard County Subdivision and Land Development Regulations to exceed the 3 to 1 lot width to length ratio.
  - denotes 25% steep slopes.
  - B.R.L. denotes building restriction line.
  - CONSTRUCTION OF STRUCTURES, GRADING AND THE REMOVAL OF VEGETATION ARE PROHIBITED WITHIN THE WETLANDS AND BUFFER AREAS IN ACCORDANCE WITH HOWARD COUNTY SUBDIVISION AND LAND DEVELOPMENT REGULATIONS, SECTION 16.116 (C) (6).

DATE	NO	REVISION
OWNER/DEVELOPER		
DIGI - DATA CORPORATION 8594 DORSEY RUN ROAD JESSUP, MARYLAND 20794		
PROJECT F84-128 S 88-52 & WP 88-72 <b>HAWKSFIELD ESTATES</b>		
AREA TAX MAP 16 E 23	PARCEL 40 E	LOT 1 OF PARCEL 228
3RD ELECTION DISTRICT HOWARD COUNTY, MARYLAND		
TITLE <b>TITLE SHEET</b>		
<b>THE RIEMER GROUP, INC.</b>		
The Riemer Group, Inc. A Land Planning, Design & Civil Engineering Firm 3105 North Ridge Road, Ellicott City, Maryland 21043 (301) 461-2690		
DATE	DESIGNED BY D.B.S.	
	DRAWN BY K.A.W.	
	PROJECT NO 473.02	
	DATE MAY 9, 1988	
	SCALE: AS SHOWN	
	DRAWING NO. 1 OF 3	

APPROVED: FOR PRIVATE WATER AND PRIVATE SEWERAGE SYSTEMS FOR HOWARD COUNTY HEALTH DEPARTMENT.  
DATE 4-4-89  
COUNTY HEALTH OFFICER



P 88-82



LAND DEDICATED TO HOWARD COUNTY FOR THE PURPOSE OF A PUBLIC ROAD. AREA = 0.01 ± AC.

TENTATIVELY APPROVED ON **3-3-89**  
 DATE  
 OFFICE OF PLANNING AND ZONING OF HOWARD COUNTY  
*W. J. ...* **4-27-89**  
 PLANNING DIRECTOR DATE  
 Com

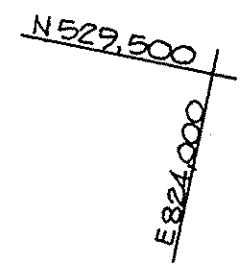
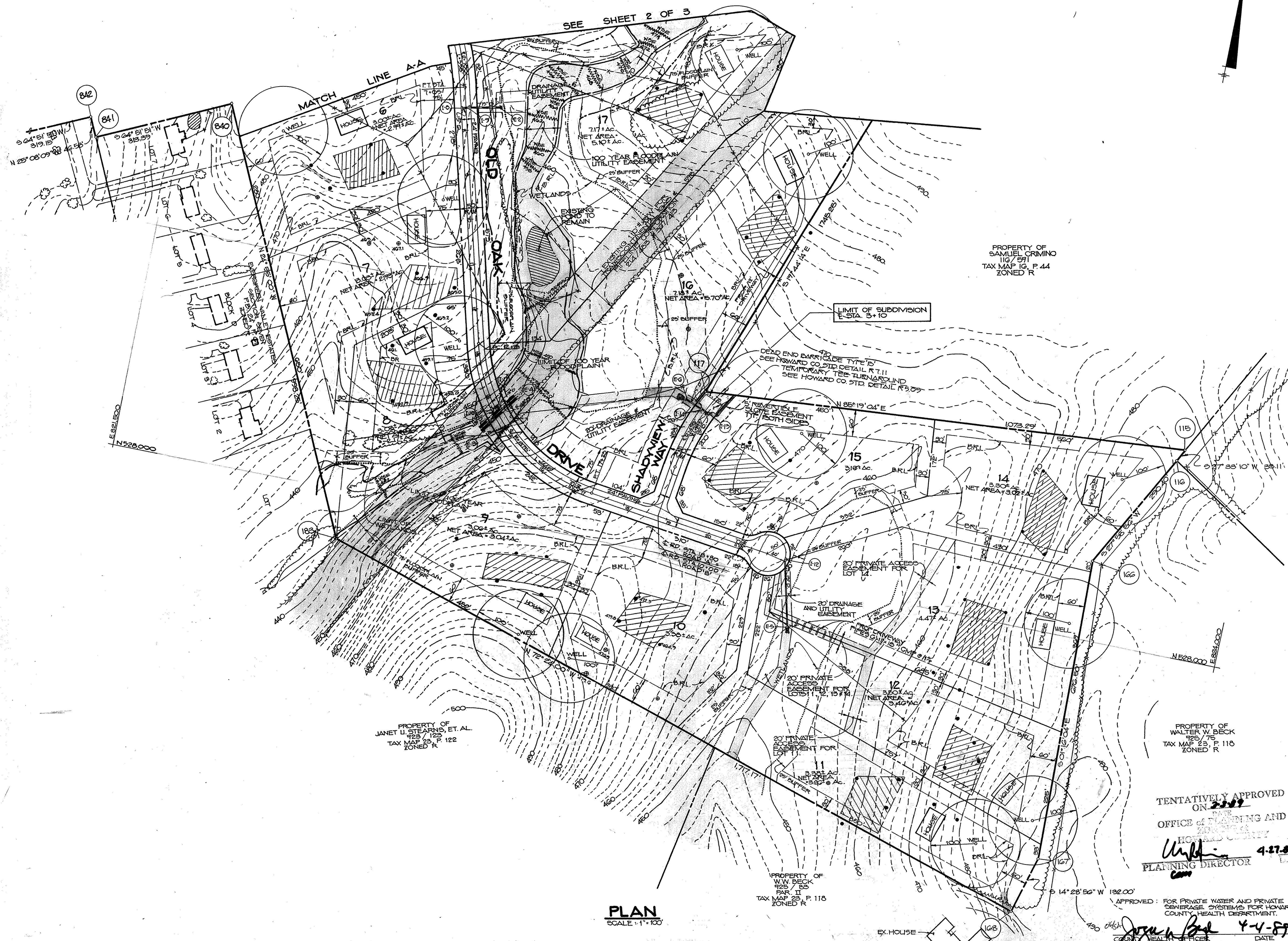
FLOW ATTENUATION THROUGH SWALES WILL PROVIDE QUALITY & QUANTITY SWM.

DATE	NO.	REVISION
OWNER / DEVELOPER		
DIGI - DATA CORPORATION 8524 DORSEY RUN ROAD JESSUP, MARYLAND 20794		
PROJECT: F84-128 S 88-52 # WT 88-72		
<b>HAWKSFIELD ESTATES</b>		
AREA TAX MAP 16 & 28 3RD ELECTION DISTRICT HOWARD COUNTY, MARYLAND		PARCEL 40 # LOT 1 OF PARCEL 228
TITLE:		
<b>PRELIMINARY PLAN</b>		
<b>THE RIEMER GROUP, INC.</b>		
The Riemer Group, Inc. A Land Planning, Design & Civil Engineering Firm 3105 North Ridge Road, Ellicott City, Maryland 21043 (301) 461-2690		

PLAN  
SCALE: 1"=100'

APPROVED: FOR PRIVATE WATER AND PRIVATE SEWERAGE SYSTEMS FOR HOWARD COUNTY HEALTH DEPARTMENT.  
*J. ...* **4-4-89**  
 COUNTY HEALTH OFFICER DATE

DATE	DESIGNED BY
	DESIGNED BY: D.D.G.
	DRAWN BY: K.A.W.
	PROJECT NO: 47302
	DATE: MAY 9, 1988
	SCALE: AS SHOWN
	DRAWING NO. 2 OF 3



PROPERTY OF  
SAMUEL CRIMINO  
116/291  
TAX MAP 16, P. 44  
ZONED R

PROPERTY OF  
GEORGE A. GARBUTI  
995/125  
TAX MAP 16, P. 172  
ZONED R

PROPERTY OF  
JANET U. STEARNS, ET. AL  
925/123  
TAX MAP 23, P. 122  
ZONED R

PROPERTY OF  
WALTER W. BECK  
125/75  
TAX MAP 23, P. 118  
ZONED R

PROPERTY OF  
W.W. BECK  
925/85  
PAR. II  
TAX MAP 23, P. 118  
ZONED R

TENTATIVELY APPROVED  
ON 3-27-89  
OFFICE OF PLANNING AND  
COMMUNITY DEVELOPMENT  
HOWARD COUNTY  
*Arthur E. Muegge*  
PLANNING DIRECTOR

APPROVED: FOR PRIVATE WATER AND PRIVATE  
SEWERAGE SYSTEMS FOR HOWARD  
COUNTY HEALTH DEPARTMENT.  
*Arthur E. Muegge*  
COUNTY HEALTH OFFICER  
DATE: 4-4-89

FLOW ATTENUATION THROUGH  
SWALES WILL PROVIDE QUALITY &  
QUANTITY S.W.M.

PLAN  
SCALE: 1" = 100'

DATE	NO.	REVISION
OWNER/DEVELOPER		
DIGI-DATA CORPORATION 8594 DORSEY RUN ROAD JESSUP, MARYLAND 20794		
PROJECT: F&A-128 S-88-52 # WP 88-72 <b>HAWKFIELD ESTATES</b>		
AREA	TAX MAP 16 # 23	PARCEL 40 # LOT 1 OF PARCEL 225
3RD ELECTION DISTRICT HOWARD COUNTY, MARYLAND		
TITLE: <b>PRELIMINARY PLAN</b>		
<b>THE RIEMER GROUP, INC.</b>		
The Riemer Group, Inc. A Land Planning, Design & Civil Engineering Firm 3105 North Ridge Road, Ellicott City, Maryland 21043 (301) 461-2690		
DATE	DESIGNED BY: D.B.S.	
	DRAWN BY: R.A.W.	
	PROJECT NO: 47302	
	DATE: MAY 9, 1988	
	SCALE: AS SHOWN	
	DRAWING NO. 3 OF 3	

F 88-82