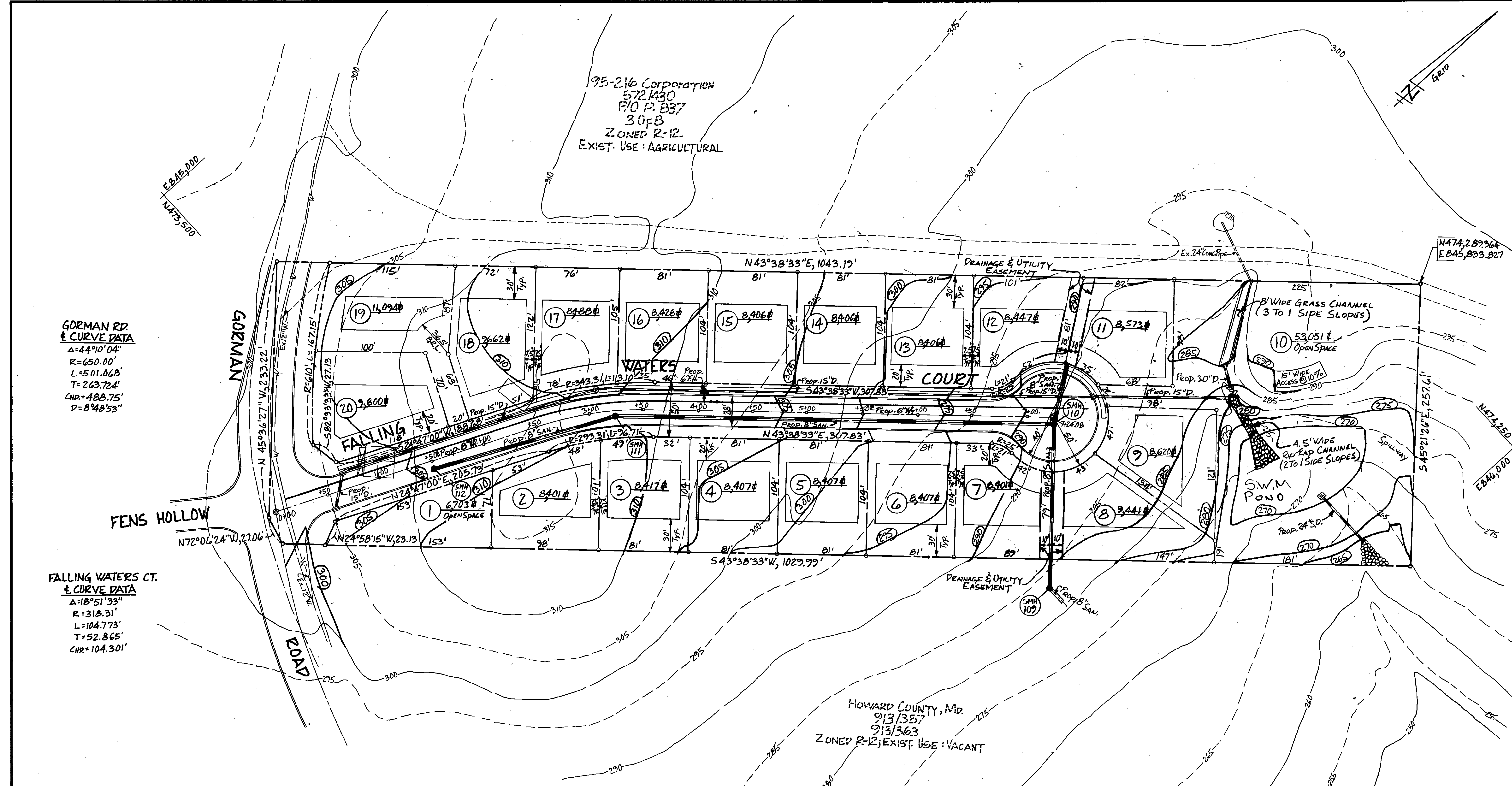


VICINITY MAP
SCALE: 1"=2000'

GORMAN RD. & CURVE DATA
 Δ=44°10'04"
 R=650.00'
 L=501.068'
 T=263.724'
 Chd.=488.75'
 P=8°48'53"

FALLING WATERS CT. & CURVE DATA
 Δ=18°51'33"
 R=318.31'
 L=104.773'
 T=52.865'
 Chd.=104.301'



DENSITY TABULATION:

OPEN SPACE REQUIRED	OPEN SPACE PROVIDED	GROSS AREA	FLOOD PLAIN STEEP SLOPES	NET AREA	NO. OF DWELLING UNITS ALLOWED	FLOOD PLAIN LOT ADJUSTMENT	TOTAL NO. OF DWELLING UNITS ALLOWED	TOTAL NO. OF DWELLING UNITS PROPOSED	DENSITY PER ACRE
0.994 Ac.±	1.372 Ac.±	6.162 Ac.±	0.828 Ac.±	5.334 Ac.±	19.4		19.4	18	3.37

LOT SIZE AND MANDATORY OPEN SPACE

LOT SIZE	NO. OF LOTS	AREA OF LOTS (Ac.±)	MANDATORY OPEN SPACE	AREA OF OPEN SPACE (Ac.±)
12,000 OR GREATER	0	0	6%	0
10,800 - 11,999	1	0.255	10%	0.026
9,600 - 10,799	2	0.447	20%	0.089
8,400 - 9,599	15	2.930	30%	0.879
TOTALS	18	3.632		0.994

Gross Area Lot 8 = 2,441 #
 Steep Slopes = 860 #
 Net Area Lot 8 = 8,581 #

Gross Area Lot 9 = 8,620 #
 Steep Slopes = 200 #
 Net Area Lot 9 = 8,420 #

Gross Area Lot 10 = 53,051 #
 Pan Handle = 1,244 #
 Steep Slopes & S.W.M. = 35,025 #
 Net Area Lot 10 = 16,782 #

Gross Area Lot 19 = 11,094 #
 Pan Handle = 1,335 #
 Net Area Lot 19 = 2,759 #

LOTS 1 AND 10
 OPEN SPACE PROVIDED = 1.372 Ac.±
 STEEP SLOPES & S.W.M. = .804 Ac.±
 NET AREA = .568 Ac.±
 50% MIN. OPEN SPACE REQ'D = .497 Ac.±

HOWARD COUNTY, MD.
 913/357
 913/363
 ZONED R-12; EXIST. USE: VACANT

- GENERAL NOTES**
- EXISTING ZONING - R-12
 - PUBLIC WATER & SEWER
 - DEED REFERENCES-412/789 & 413/36
 - PROVIDE STREET TREES AS PER SUBDIVISION & LAND DEVELOPMENT REGULATIONS

OWNER/DEVELOPER: THE ARUNDEL CORPORATION
 110 WEST RD. SUITE 100
 TOWSON, MD. 21204

TENTATIVELY APPROVED ON 1-29-88
 OFFICE OF PLANNING AND ZONING OF
 HOWARD COUNTY
 3.14.88
 DATE 15

**FALLING WATERS
 PRELIMINARY PLAN**
 ELECTION DISTRICT: 6 HOWARD CO., MD.
 TAX MAP No. 47 PARCELS 82 & 83 5-87-32



THE ARUNDEL CORPORATION
 ARUNDEL CORPORATE CENTER, SUITE 100
 110 WEST RD. TOWSON, MD. 21204
 (301) 296-6400
 LAND PLANNERS, LAND SURVEYORS, CIVIL ENGINEERS

SCALE: 1"=50'
 DATE: 12-11-87
 Rev. 3-188 By CRS & MTY.

DESIGNED: CRS
 DRAWN: MTY
 CHECKED: CRS
 APPROVED: P.R.S.

1 OF 1