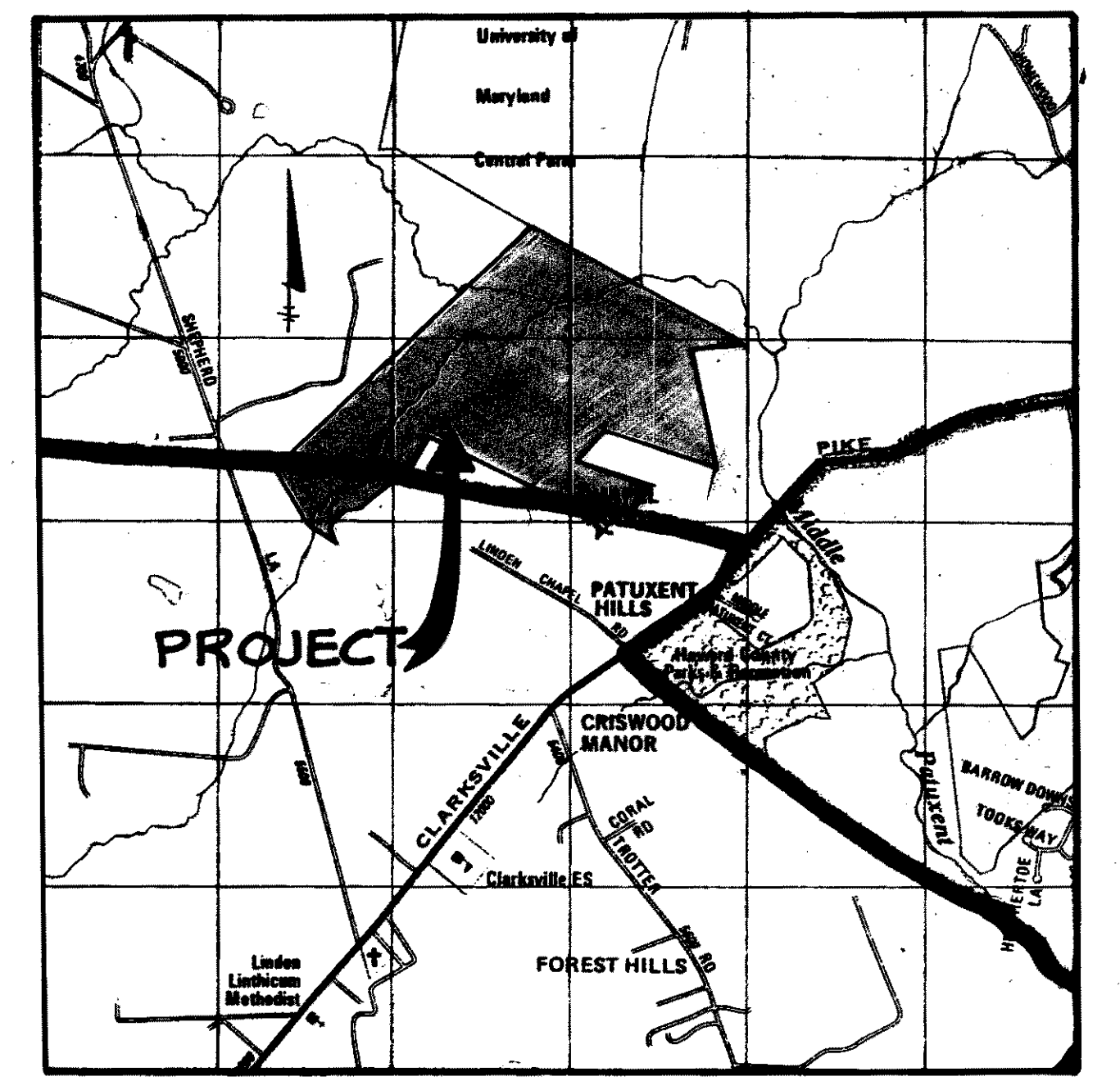


COORDINATES		
NO.	NORTH	EAST
1	508,842.55	818,045.06
2	511,598.51	820,835.51
3	510,792.66	822,749.36
4	510,332.76	822,877.30
5	510,237.25	823,011.87
6	510,233.18	822,428.89
7	509,129.62	822,512.05
8	509,748.79	821,304.09
9	509,514.01	821,025.58
10	509,153.00	821,728.00
11	509,203.00	821,750.00
12	509,052.00	821,792.00
13	508,667.72	821,627.91
14	508,377.13	821,502.60
15	509,046.64	820,470.25
16	509,004.39	820,420.03
17	509,412.38	819,816.04
18	508,768.38	819,316.38
19	508,819.93	819,187.90
20	508,702.87	819,127.67
21	509,442.84	818,913.35
22	508,517.17	818,717.51
23	508,320.41	818,585.79
24	508,374.24	818,585.31
25	508,232.41	818,734.64
26	508,264.59	818,555.99
27	508,326.60	818,432.66
28	508,406.92	818,361.17

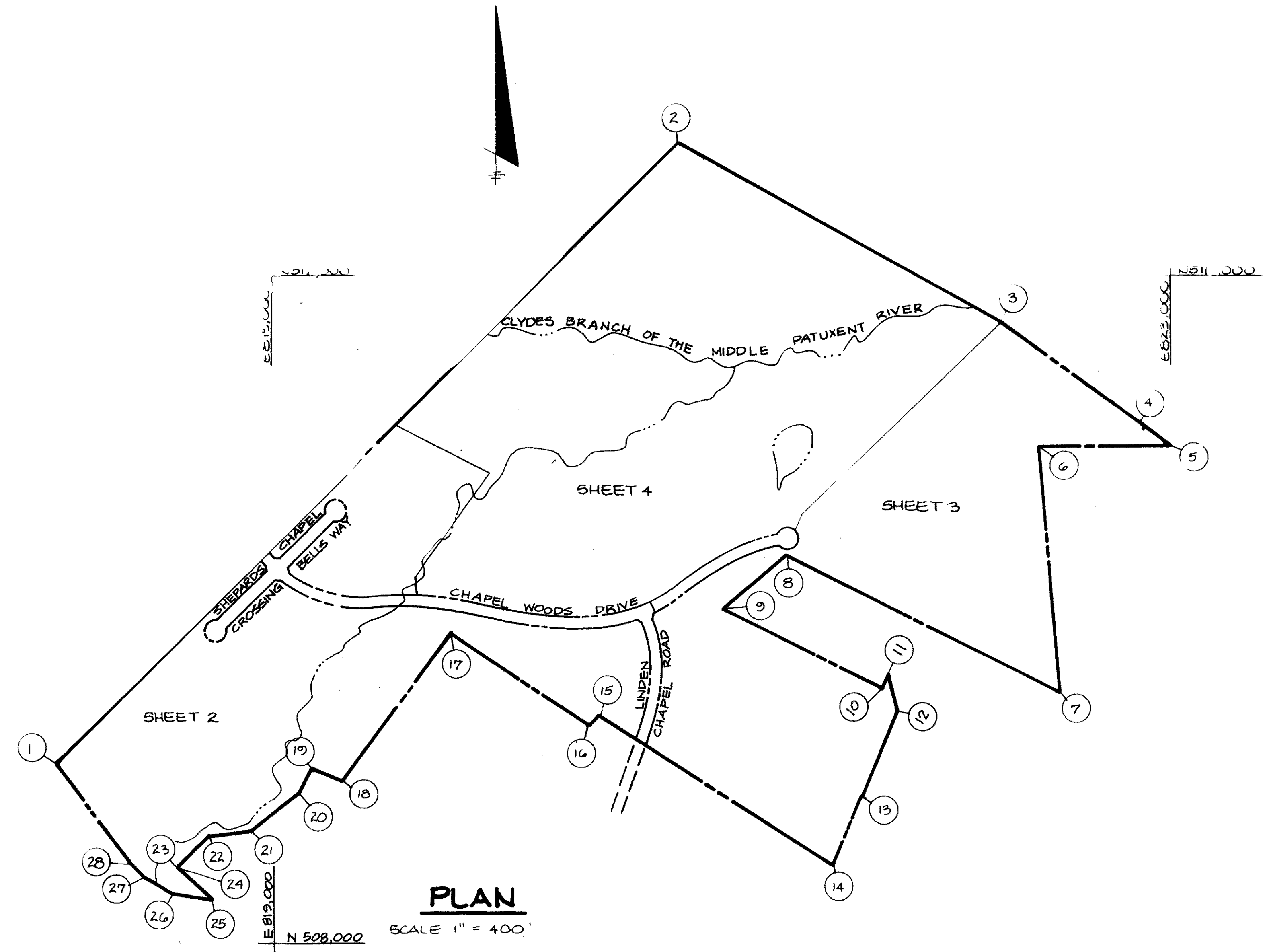
PRELIMINARY PLAN CHAPEL WOODS II

5TH ELECTION DISTRICT HOWARD COUNTY, MARYLAND



NOTES:

- The area shown thus indicates a private sewage easement of minimum 10,000 square feet as required by the Maryland State Department of Health and Mental Hygiene for individual disposal. Improvements of any kind in this area are restricted until public sewage is available and servicing any residential structures on this site. This easement shall become null and void upon connection to a public sewage. The County Health Officer shall have the authority to grant variances for encroachments into the private sewage easement. Recordation of a modified sewage easement shall not be necessary.
- Percolation test holes shown hereon have been field located as shown DARK DOT-PASSING TEST. FAILED TEST.
- The lots shown hereon comply with the minimum ownership width and lot areas as required by the Maryland State Department of Health and Mental Hygiene.
- Percolation areas and water wells for adjoining lots are shown where pertinent.
- See Office of Planning and Zoning file 5-86-87 5-87-23.
- For flag or pipestem lots; refuse collection, snow removal and road maintenance are provided to the junction of flag or pipestem lot driveway.
- BEFORE EXCAVATING AND GRADING IS PERFORMED FOR THE PROPOSED LINDEN CHAPEL ROAD OR AT ANY OTHER LOCATION IN THE S.E. RIGHT OF WAY, TEST HOLES SHOULD BE HAND DUG OVER THE PIPELINE TO DETERMINE ITS DEPTH AND LOCATION.
- 100-YEAR FLOODPLAIN CROSS SECTIONS LOCATION AND ELEVATION OBTAINED FROM CLYDES BRANCH DRAINAGE STUDY (CAPITAL PROJECT D-1028) PREPARED BY KIDDE CONSULTANTS, INC. FOR HOWARD COUNTY, MARYLAND.
- LOTS 5, 23 & 24 - LIMITED HOUSE SITES - PERCOLATION ADJUSTMENT NOT AVAILABLE.
- WELLS TO BE DRILLED ON LOTS 23 & 24 PRIOR TO FINAL PLAT APPROVAL.
- HOUSE ON LOT 5 WILL HAVE A MINIMUM SERVICABLE ELEVATION OF 388.0 BASED ON TOPOGRAPHY SHOWN ON PLAN.
- THE LOTS SHOWN HEREBY COMPLY WITH THE MINIMUM OWNERSHIP WIDTH AND LOT AREA AS REQUIRED BY THE MARYLAND STATE DEPARTMENT OF HEALTH AND MENTAL HYGIENE.



PERK TEST DATA

LOT NUMBER	LOT NO.		SLOPE	Average Perc Time in minutes for 2nd inch	Inlet and Bottom Maximum Depth permitted in Feet
	New	Old			
57498	1	1		5 min	3" TO 5 1/2"
57499	2	2			4" TO 6 1/2"
57500	3	3		17'	4 1/2" TO 7"
(37501) 57501	4	4			3 1/2" TO 5 1/2"
37502	5	5			2 1/2" TO 5"
37503	6	6		N/A	3 1/2" TO 5 1/2"
37504	7	7			3 1/2" TO 5 1/2"
37505	8	8	Reconfigured	3 1/2	3 1/2" TO 5 1/2"
37506	9	9			3 1/2" TO 5 1/2"
37607	10	10	Reconfigured	3	3 1/2" TO 5"
(37508) 37508	11	11	Reconfigured	2	3 1/2" TO 5"
37509	12	12		3 1/2	3 1/2" TO 6"
37510	13	13			3 1/2" TO 5 1/2"
37511	14	14	Reconfigured	3	3 1/2" TO 7 1/2"
(37512) 37512	15	15	Reconfigured	4	3" TO 7"
37513	16	16	Reconfigured	2	3" TO 7"
	17	17	Reconfigured		3" TO 5 1/2"
	18	18		N/A	
37514	19	19	Reconfigured	2	3 1/2" TO 6"
37515	20	20	Reconfigured	2	3 1/2" TO 6 1/2"
37516	21	21		9	4" TO 6 1/2"
37517	22	22		10	4" TO 6 1/2"
37518	23	23		12	3 1/2" TO 6"
37519	24	24	Reconfigured	18	4 1/2" TO 6 1/2"
37520	25	25	Reconfigured	10	4 1/2" TO 7 1/2"
37521	26	26	Reconfigured	3	4" TO 8"

SITE TABULATION

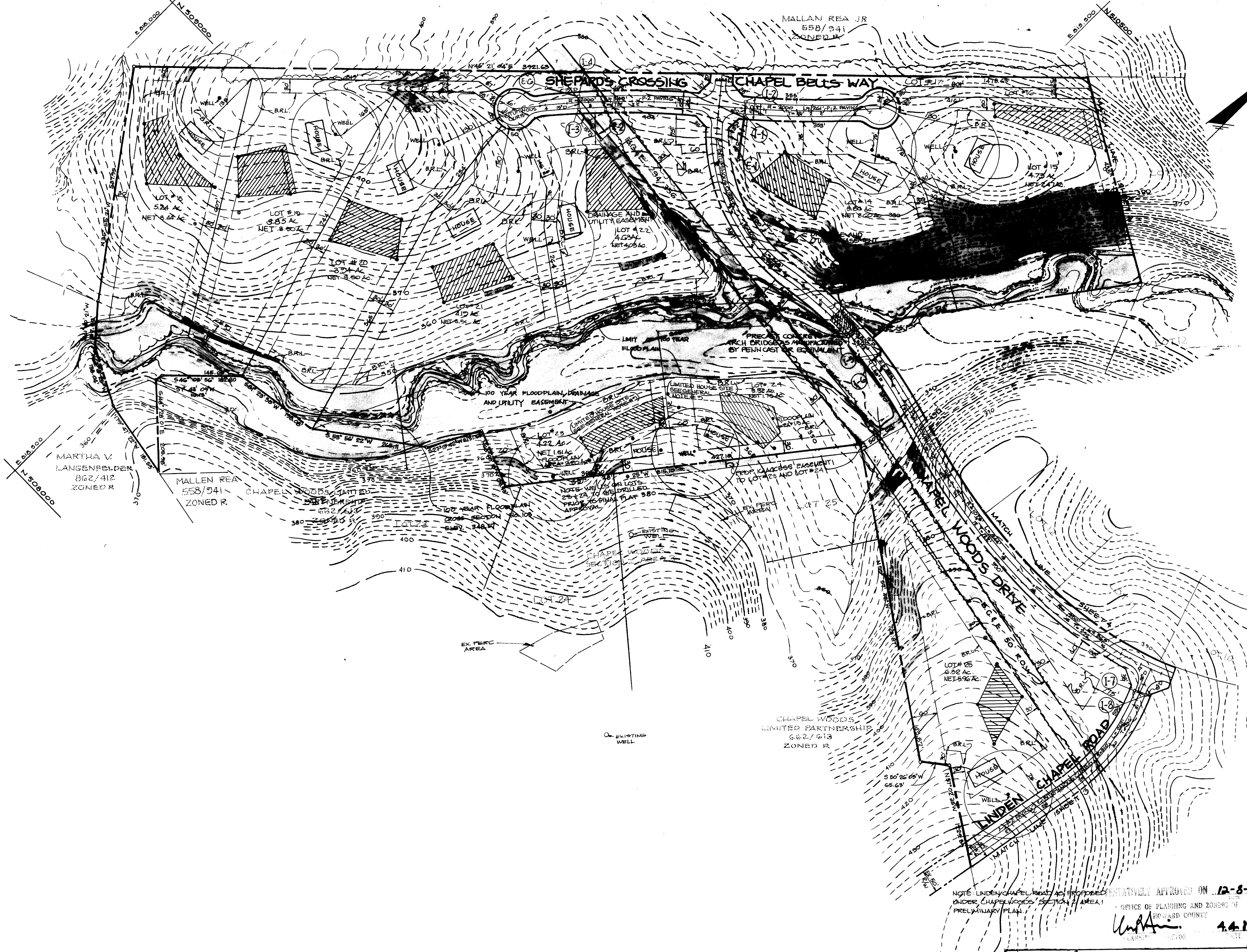
Present Zoning	R	
Total Number of Lots	25	
Total Number of Residential Lots	25	
Total Area Lots	165.99 Acres	
Total Area Road Right-of-way	5.86 Acres	
Total Area Open Space	0 Acres	
Total Area in 100-year Floodplain	36.76 Acres	
Total Area this Submission	171.79 Acres	
Water System	Private	
Sewer System	Private	

25% AND GREATER SLOPES

DATE	NO.	REVISION
OWNER: JJM PARTNERSHIP 5570-201 STERRETT PLACE COLUMBIA, MARYLAND 21044 PH(301)-740-4466		
DEVELOPER: JJM INC. 5570-201 STERRETT PLACE COLUMBIA, MARYLAND 21044 PH(301)-740-4466		
PROJECT: CHAPEL WOODS II		
AREA: TAX MAP NO. 29 PARCELS 26, 86, 282 5TH ELECTION DISTRICT HOWARD COUNTY, MARYLAND		
TITLE: TITLE SHEET		
THE RIEMER GROUP, INC. The Riemer Group, Inc. A Land Planning, Design & Civil Engineering Firm 3106 Health Park Drive, Ellicott City, Maryland 21043 (301) 481-2690		
DATE	5-86-87	5-87-23 WP-88-87
DESIGNED BY:	J.D.P.	
DRAWN BY:	D.D.B.	
PROJECT NO.:	28800	
DATE:	20TH APRIL 1987	
SCALE:	AS SHOWN	
DRAWING NO.:	1 OF 4	

APPROVED: For private water and private sewerage systems
By Howard County Health Department

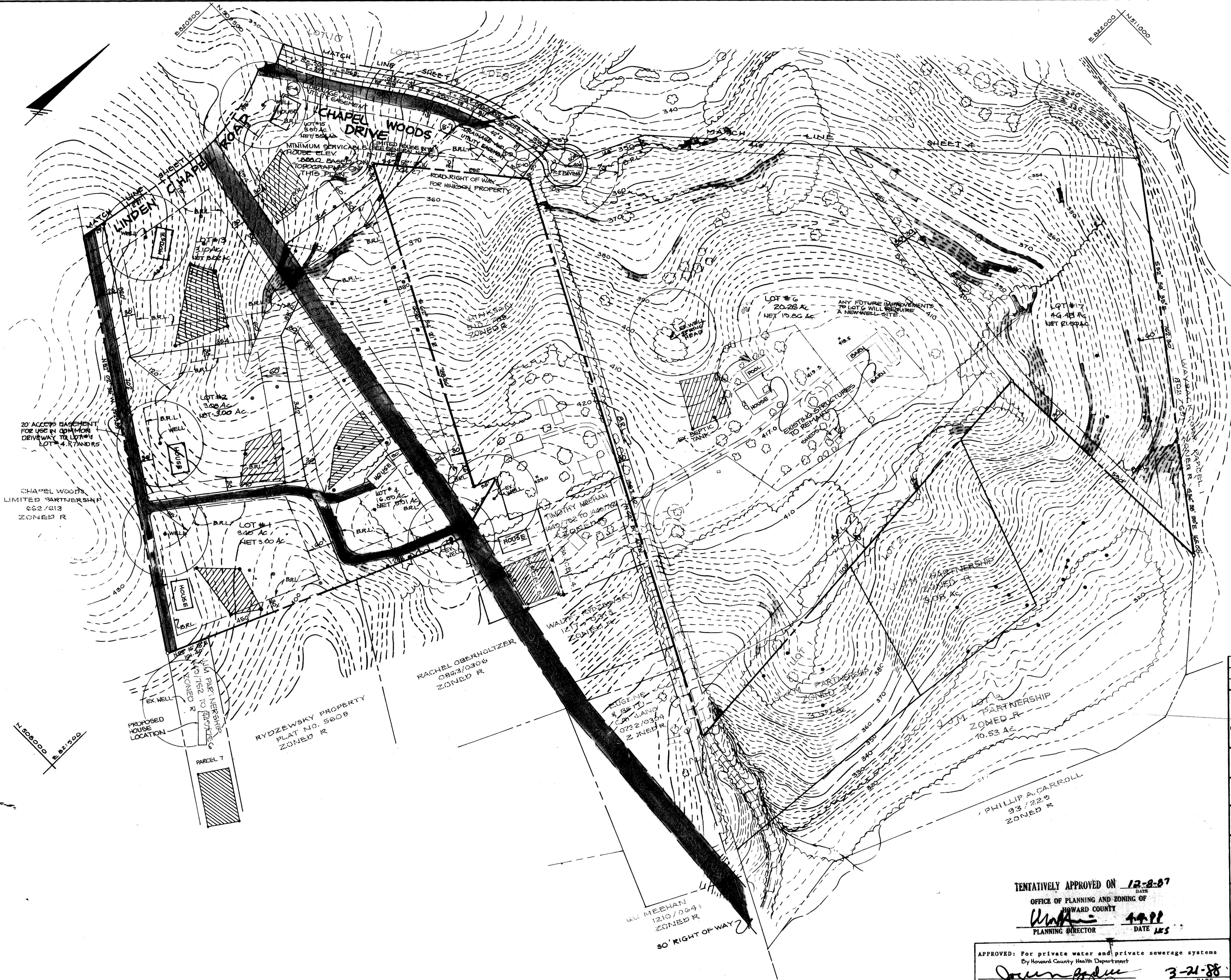
ARTHUR E. HUEGGE
DATE: 3-21-88



DATE	NO.	REVISION
OWNER/DEVELOPER		
(OWN) JJM PARTNERSHIP 5570-201 STERRETT PLACE COLUMBIA, MARYLAND 21044 PH. (301) 740-4466		
(DEV) JJM INC. 5570-201 STERRETT PLACE COLUMBIA, MARYLAND 21044 PH. (301) 740-4466		
PROJECT:		
CHAPEL WOODS II		
AREA	TAX MAP # 29	PARCELS 26,86,282
5TH ELECTION DISTRICT HOWARD COUNTY, MARYLAND		
TITLE:		
PRELIMINARY PLAN		
THE RIEMER GROUP, INC.		
The Riemer Group, Inc. A Land Planning, Design & Civil Engineering Firm 3105 Health Park Drive, Ellicott City, Maryland 21043 (301) 461-2890		
DATE	5-8-88	5-8-87 5-27-23 WP-88-87
DESIGNED BY:	DAM	
DRAWN BY:	DDB	
PROJECT NO:	28800	
DATE:	20TH APRIL 1987	
SCALE:	1" = 100'	
DRAWING NO.	2 OF 4	

STATUTORILY APPROVED ON **12-8-87**
 OFFICE OF PLANNING AND ZONING OF
 HOWARD COUNTY
 APPROVED: *John E. Muegge* **4.4.88**
 ARTHUR E. MUEGGE #8107
 APPROVED: For private water and private sewerage systems
 By Howard County Health Department
John E. Muegge **7-21-88**
 JOHNS HEALTH OFFICER #8107

MARYLAND BLUEPRINT CO., INC.

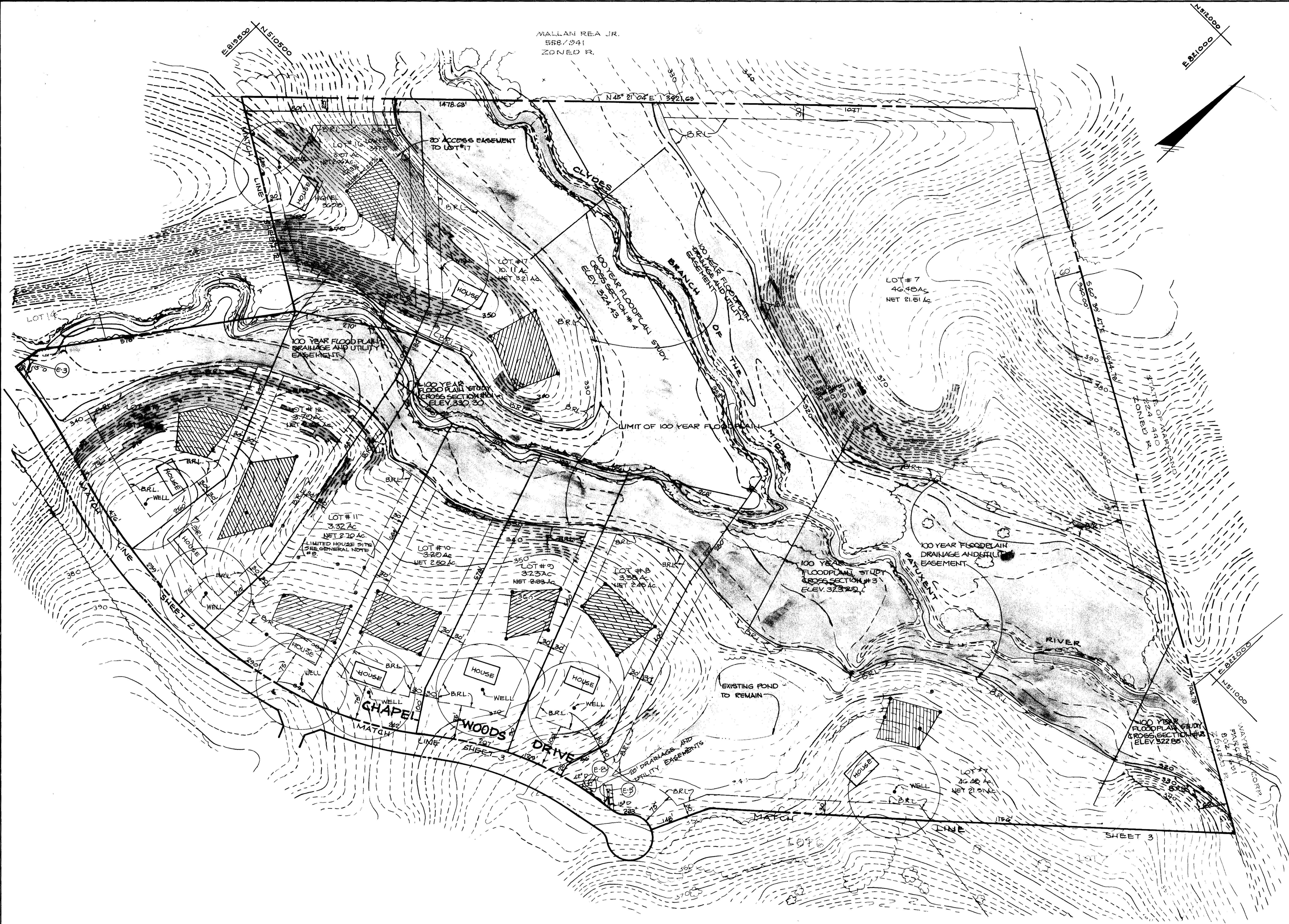


DATE	NO.	REVISION
OWNER/DEVELOPER		
(OWN) JIM PARTNERSHIP 5570-201 STERRETT PLACE COLUMBIA, MARYLAND 21044 PH. (301) 740-4466		
(DEV) JIM INC. 5570-201 STERRETT PLACE COLUMBIA, MARYLAND 21044 PH. (301) 740-4466		
PROJECT:		
CHAPEL WOODS II		
AREA	TAX MAP NO. 25	PARCELS 26,86,282
5TH ELECTION DISTRICT HOWARD COUNTY, MARYLAND		
TITLE:		
PRELIMINARY PLAN		
THE RIEMER GROUP, INC.		
The Riemer Group, Inc. A Land Planning, Design & Civil Engineering Firm 3105 Health Park Drive, Ellicott City, Maryland 21043 (301) 461-2890		
DATE	3-8-88	5-86-87 5-87-23 WP-88-87
DESIGNED BY:	DAM	
DRAWN BY:	DDB	
PROJECT NO.:	28800	
DATE:	20 TH APRIL 1987	
SCALE:	1" = 100'	
DRAWING NO.:	3 OF 4	

TENTATIVELY APPROVED ON 12-8-87
DATE
OFFICE OF PLANNING AND ZONING OF
HOWARD COUNTY
W. A. MUEGGEL
PLANNING DIRECTOR DATE 1-15-88

APPROVED: For private water and private sewerage systems
By Howard County Health Department
John Adair
HEALTH OFFICER DATE 3-21-88





MALLAN REA JR.
558 / 341
ZONED R.

DATE	NO.	REVISION
OWNER / DEVELOPER		
(OWN) JJM PARTNERSHIP 5570-201 STERRETT PLACE COLUMBIA, MARYLAND 21044 PH (301) 740-4466		
(DEV) JJM INC. 5570-201 STERRETT PLACE COLUMBIA, MARYLAND 21044 PH (301) 740-4466		
PROJECT:		
CHAPEL WOODS II		
AREA TAX MAP NO 29 PARCELS 26,86,282 5TH ELECTION DISTRICT HOWARD COUNTY, MARYLAND		
TITLE:		
PRELIMINARY PLAN		

THE RIEMER GROUP, INC.
The Riemer Group, Inc. A Land Planning, Design & Civil Engineering Firm
3105 Health Park Drive, Ellicott City, Maryland 21043 (301) 461-2880

APPROVED: For private water and private sewerage systems
By Howard County Health Department
COUNTY HEALTH OFFICER

DATE 3-21-88

DATE 3-8-88

DESIGNED BY: DAM

DRAWN BY: DDB

PROJECT NO: 28800

DATE: 20TH APRIL 1987

SCALE: 1" = 100'

DRAWING NO. 4 OF 4