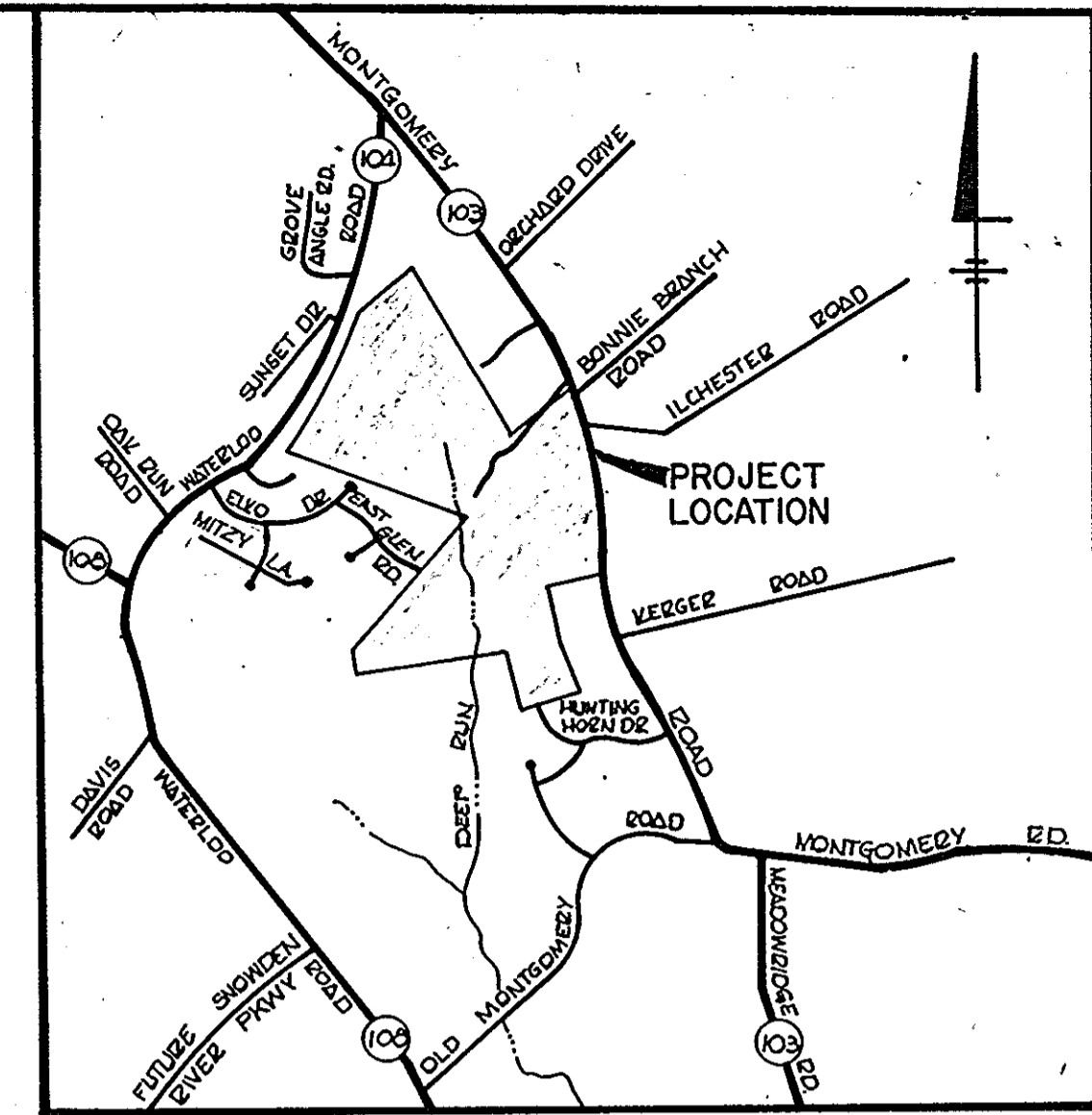


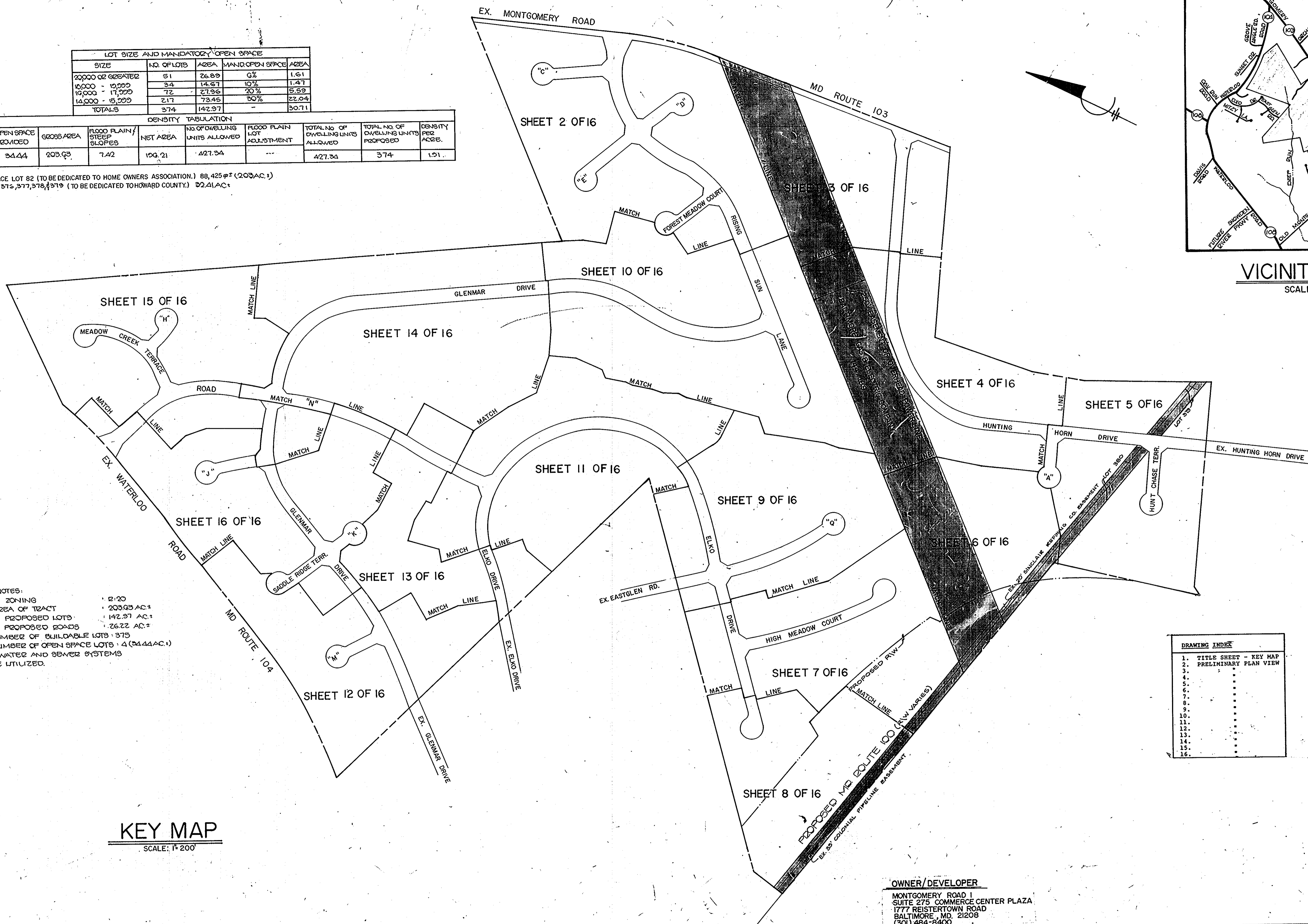
LOT SIZE AND MANDATORY OPEN SPACE				
SIZE	NO. OF LOTS	AREA	MAND. OPEN SPACE	AREA
20,000 OR GREATER	51	26.89	0%	1.61
15,000 - 19,999	34	14.67	10%	1.47
10,000 - 14,999	72	27.96	20%	5.59
14,000 - 9,999	217	73.46	30%	22.04
TOTALS	374	142.97		30.71

DENSITY TABULATION									
OPEN SPACE REQUIRED	OPEN SPACE PROVIDED	GROSS AREA	FLOOD PLAIN STEEP SLOPES	NET AREA	NO. OF DWELLING UNITS ALLOWED	FLOOD PLAIN LOT ADJUSTMENT	TOTAL NO. OF DWELLING UNITS ALLOWED	TOTAL NO. OF DWELLING UNITS PROPOSED	DENSITY PER ACRE
30.71	34.44	203.03	7.42	195.61	427.34	---	427.34	374	1.01

LOCAL OPEN SPACE LOT 82 (TO BE DEDICATED TO HOME OWNERS ASSOCIATION.) 88,425#² (2.03AC.)
 OPEN SPACE LOTS 576, 577, 578, 579 (TO BE DEDICATED TO HOWARD COUNTY.) 22.41AC.



VICINITY MAP
SCALE: 1"=2000'



- GENERAL NOTES:
- EXISTING ZONING: R-20
 - GROSS AREA OF TRACT: 203.03 AC.±
 - AREA OF PROPOSED LOTS: 142.97 AC.±
 - AREA OF PROPOSED ROADS: 26.22 AC.±
 - TOTAL NUMBER OF BUILDABLE LOTS: 375
 - TOTAL NUMBER OF OPEN SPACE LOTS: 4 (34.44 AC.±)
 - PUBLIC WATER AND SEWER SYSTEMS WILL BE UTILIZED.

KEY MAP
SCALE: 1"=200'

DRAWING INDEX	
1.	TITLE SHEET - KEY MAP
2.	PRELIMINARY PLAN VIEW
3.	...
4.	...
5.	...
6.	...
7.	...
8.	...
9.	...
10.	...
11.	...
12.	...
13.	...
14.	...
15.	...
16.	...

OWNER/DEVELOPER
 MONTGOMERY ROAD I
 SUITE 275 COMMERCE CENTER PLAZA
 1777 REISTERTOWN ROAD
 BALTIMORE, MD 21208
 (301) 484-8400

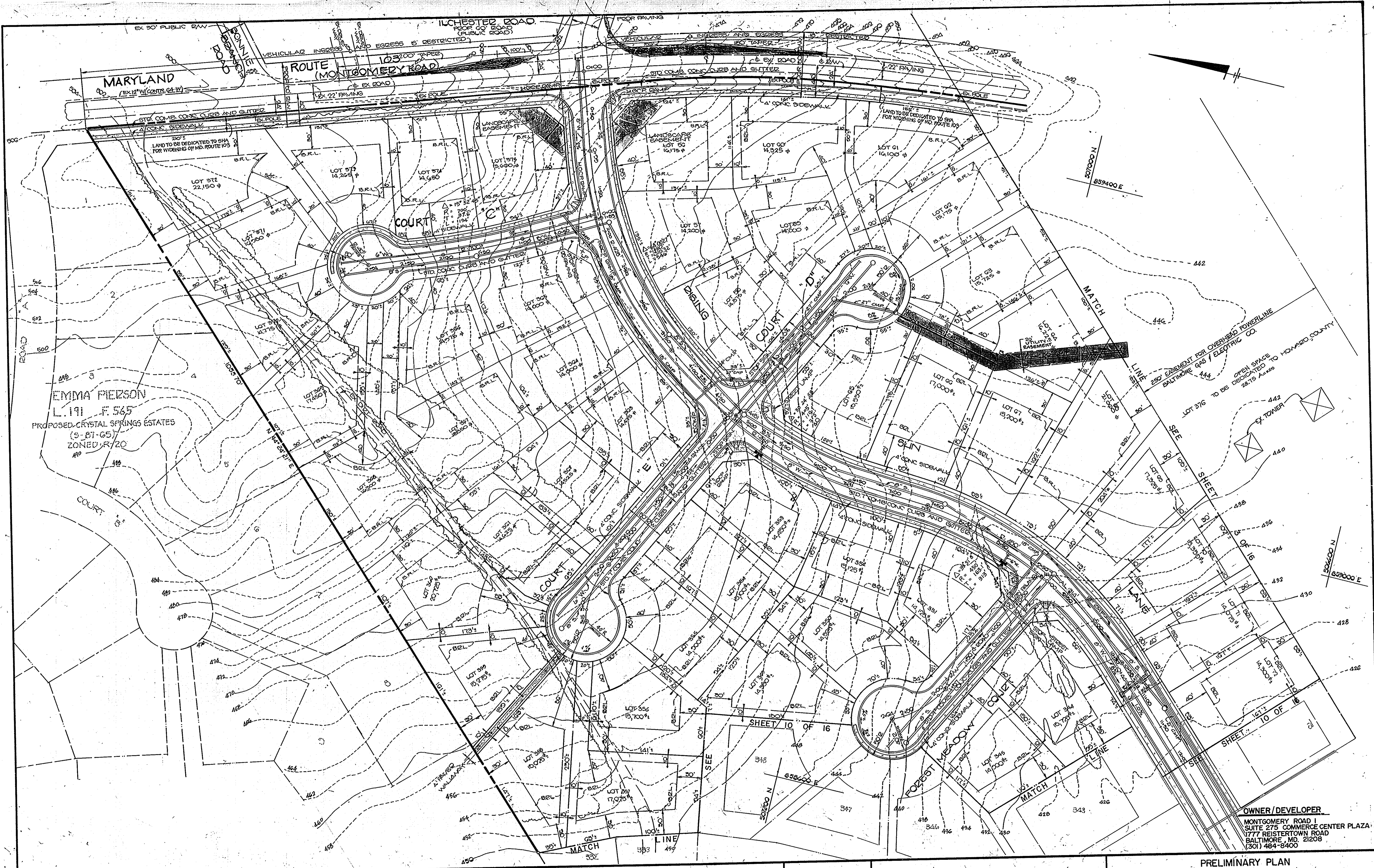
TENTATIVELY APPROVED ON Oct. 13, 1987
 OFFICE OF PLANNING AND ZONING OF
 HOWARD COUNTY
UnPa
 PLANNING DIRECTOR
 DATE: 2.29.88

PRELIMINARY PLAN
MONTGOMERY MEADOWS
 TAX MAP 31, PARCEL 423
 2ND ELECTION DISTRICT HOWARD COUNTY, MARYLAND
 DATE: MAY 6, 1987

		REVISIONS	
DESIGNED	DATE	BY	DESCRIPTION
W.K.F.	5/6/87		
DRAWN	5/6/87	D&D	PER HO. CO. COMMENTS DATED 5-11-87
CHECKED	5/6/87	D&D	PER HO. CO. COMMENTS DATED 5-17-87
APPROVED			

DEWBERRY & DAVIS
 Architects - Engineers - Planners - Surveyors
 3390 N. Ridge Road, Suite 100
 Ellicott City, Md. 21043
 (301) 461-7478



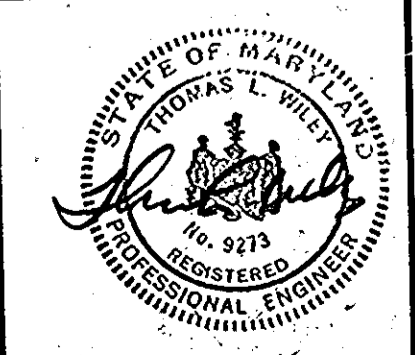


EMMA PEEBSON
L. 191 F. 565
PROPOSED CRYSTAL SPRINGS ESTATES
(S-81-65)
ZONED R/20

OWNER/DEVELOPER
MONTGOMERY ROAD I
SUITE 275 COMMERCE CENTER PLAZA
1777 REISTERTOWN ROAD
BALTIMORE, MD. 21208
(301) 484-8400

REVISIONS		
DESIGNED	DATE	DESCRIPTION
DATE	BY	DESCRIPTION
11-2-87	D&D	PER HO.CO. COMMENTS DATED 11-2-87
8-28-87	D&D	PER HO.CO. COMMENTS DATED 8-17-87
12-7-87	D&D	PER HO.CO. COMMENTS DATED 10-14-87
CHECKED	DATE	
APPROVED	DATE	

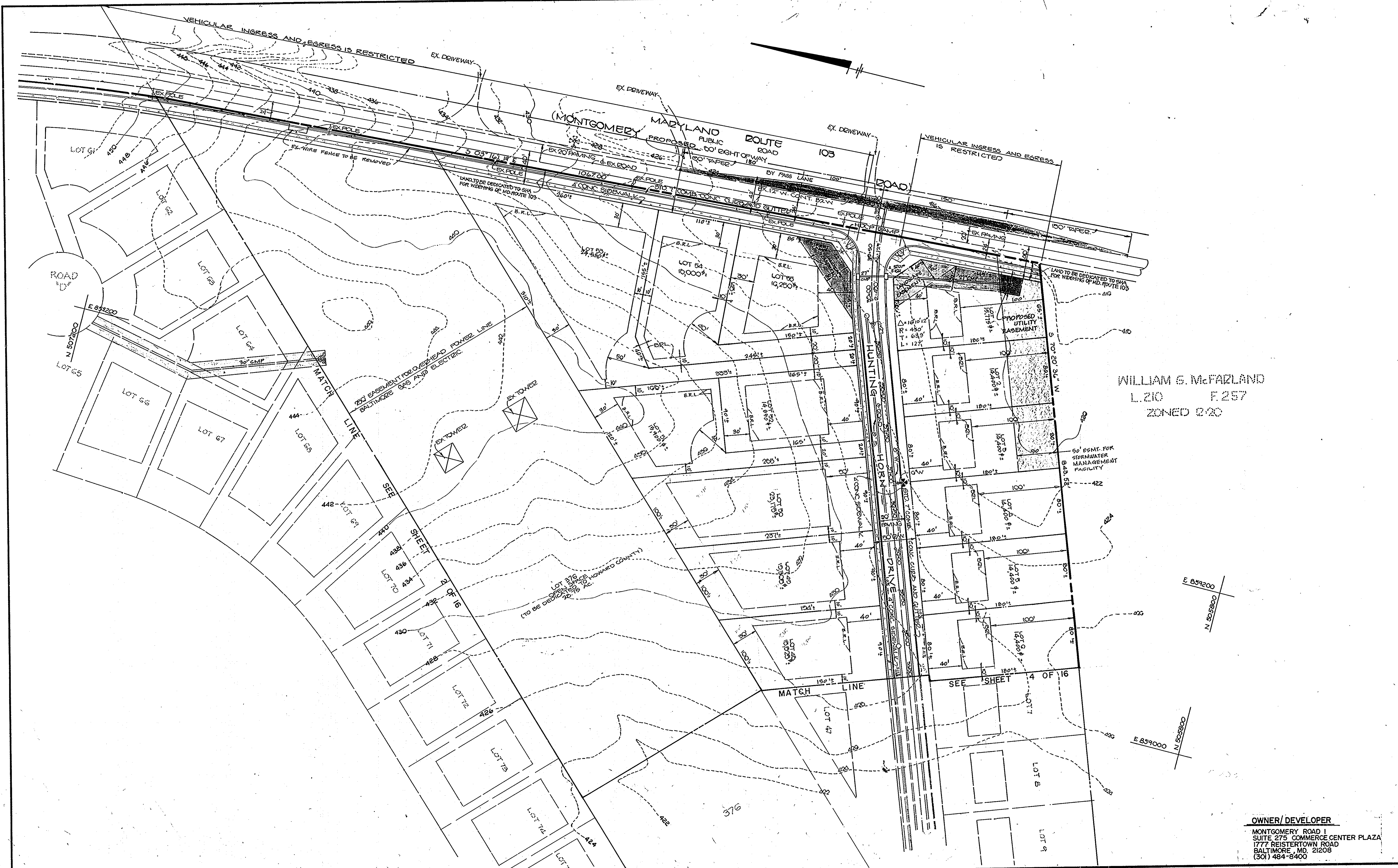
Dewberry & Davis
ENGINEERS — ARCHITECTS — PLANNERS — SURVEYORS
3300 N. RIDGE ROAD SUITE 100
ELLCOTT CITY, MARYLAND 21043
(301) 461-7478



TENTATIVELY APPROVED ON Oct. 13, 1987
OFFICE OF PLANNING AND ZONING OF
HOWARD COUNTY
PLANNING DIRECTOR
DATE

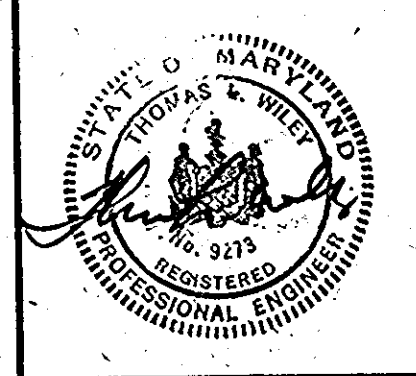
PRELIMINARY PLAN
MONTGOMERY MEADOWS
TAX MAP 31 PARCEL 423
2ND-ELECTION DISTRICT HOWARD COUNTY, MARYLAND
MAY 6, 1987

SCALE: 1" = 50'
FORMER SUBMISSION: S-87-61
CONTRACT NO.
FILE NO. MZ 814 SHEET 2 OF 16



		REVISIONS	
DESIGNED	DATE	DATE	DESCRIPTION
		11-1-87	D&D PER HO.CO.COMMENTS DATED 6-15-87
DRAWN	8-28-87	D&D	PER HO.CO.COMMENTS DATED 8-17-87
CHECKED	12-7-87	D&D	PER HO.CO.COMMENTS DATED 10-14-87
APPROVED			

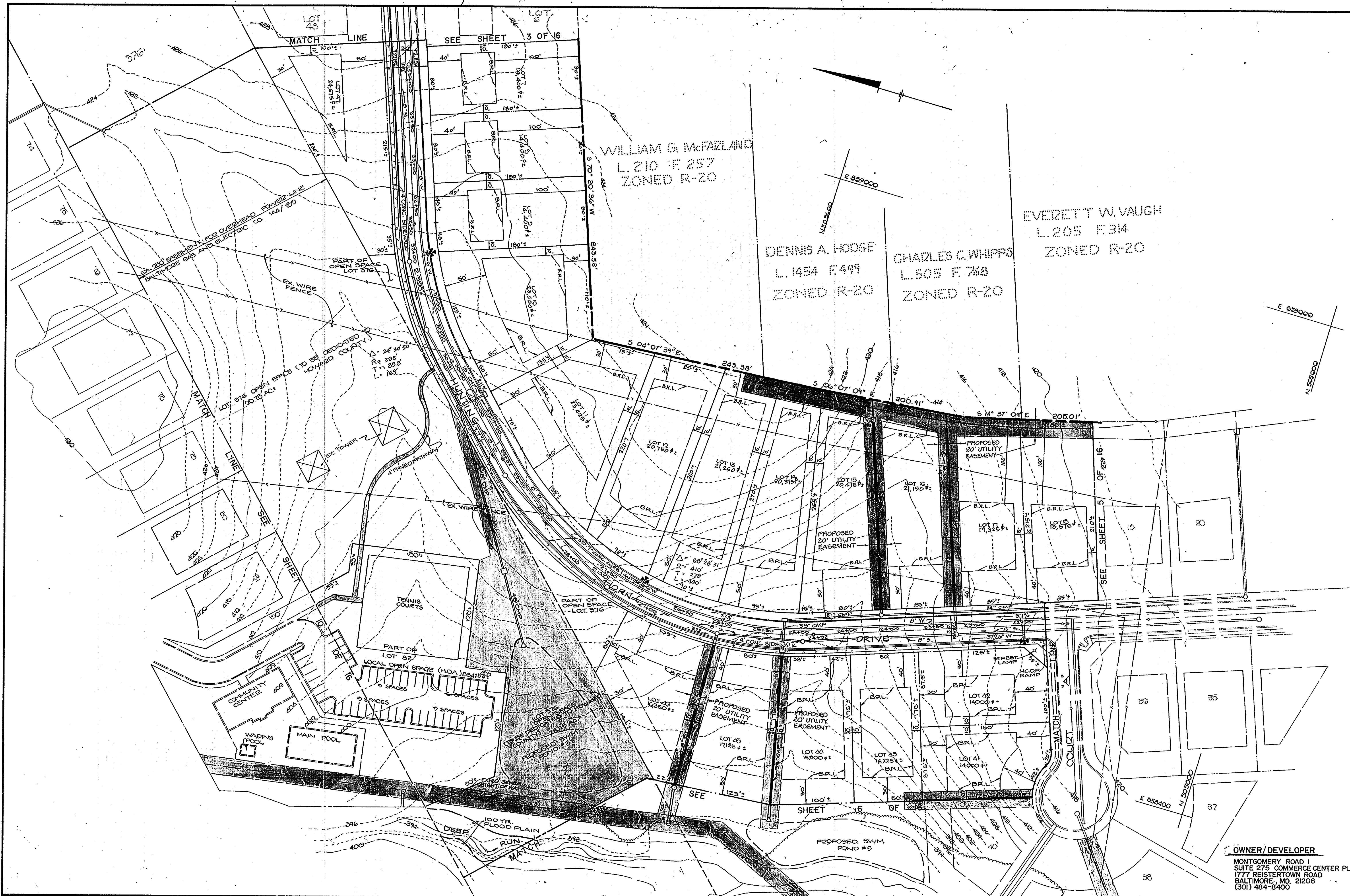
Dewberry & Davis
 ENGINEERS — ARCHITECTS — PLANNERS — SURVEYORS
 3300 N. RIDGE ROAD SUITE 100
 ELLICOTT CITY, MARYLAND 21043
 (301) 461-7478



TENTATIVELY APPROVED ON Oct. 13, 1987
 OFFICE OF PLANNING AND ZONING OF
 HOWARD COUNTY
William G. McFarland
 PLANNING DIRECTOR
 DATE 2.29.88

PRELIMINARY PLAN
MONTGOMERY MEADOWS
 TAX MAP 31 PARCEL 423
 2ND ELECTION DISTRICT HOWARD COUNTY, MARYLAND
 MAY 6, 1987

SCALE: 1" = 50'
 FORMER SUBMISSION: S-87-61
 CONTRACT NO. FILE NO. MZ 814 SHEET 3 OF 16



OWNER/DEVELOPER
 MONTGOMERY ROAD I
 SUITE 275 COMMERCE CENTER PLAZA
 1777 REISTERTOWN ROAD
 BALTIMORE, MD 21208
 (301) 484-8400

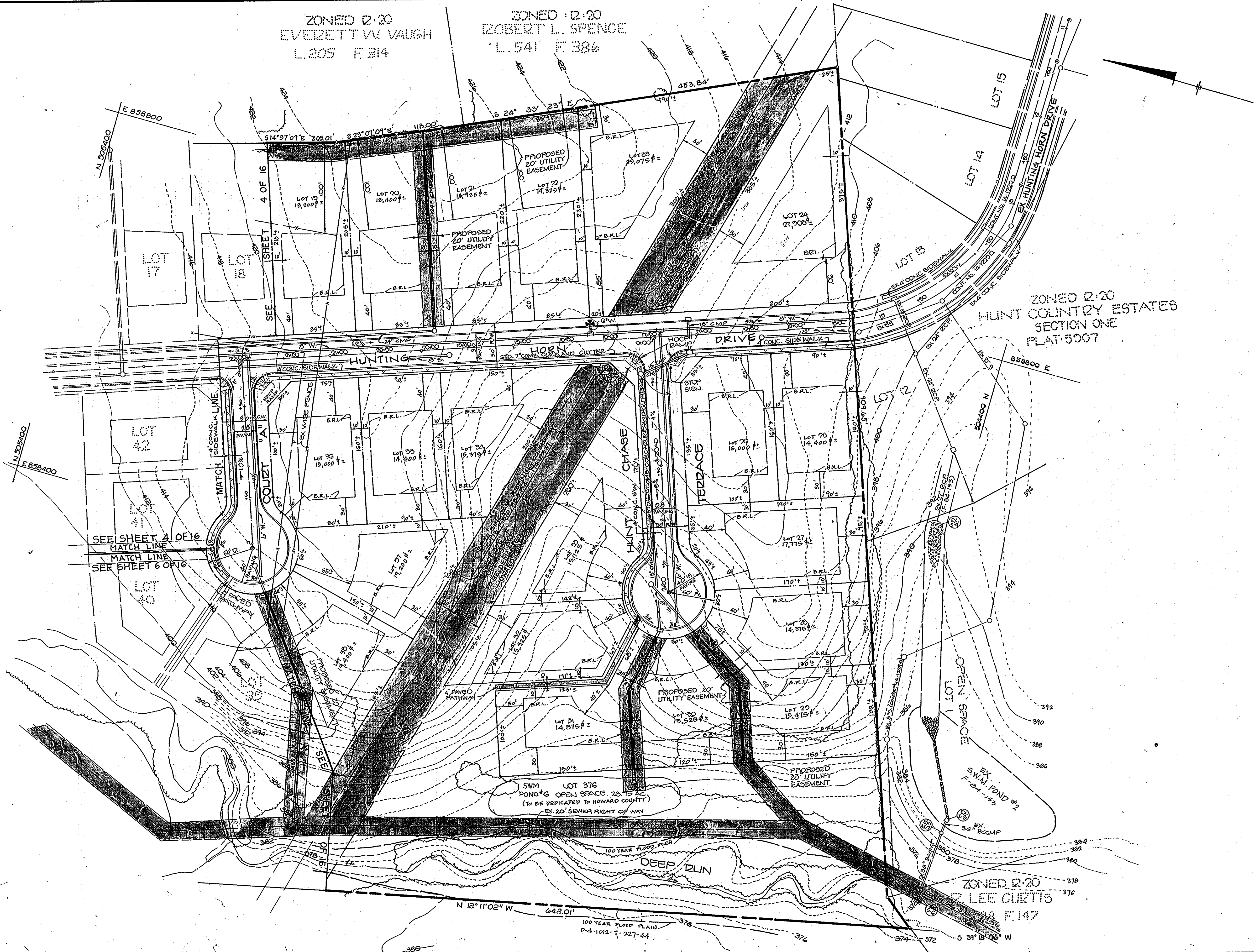
		REVISIONS		
DESIGNED	date	DATE	BY	DESCRIPTION
		11-2-87	D&D	PER HO.CO COMMENTS DATED 6/15/87
DRAWN	date	8-28-87	D&D	PER HO.CO COMMENTS DATED 8/17/87
CHECKED	date	12-7-87	D&D	PER HO.CO COMMENTS DATED 10/14/87
APPROVED	date			

Dewberry & Davis
 ENGINEERS — ARCHITECTS — PLANNERS — SURVEYORS
 3300 N. RIDGE ROAD SUITE 100
 ELLICOTT CITY, MARYLAND 21043
 (301) 461-7478



TENTATIVELY APPROVED ON Oct. 13, 1987
 OFFICE OF PLANNING AND ZONING OF
 HOWARD COUNTY
 Planning Director
 DATE

PRELIMINARY PLAN
MONTGOMERY MEADOWS
 TAX MAP 31 PARCEL 423
 2ND ELECTION DISTRICT HOWARD COUNTY, MARYLAND
 MAY 6, 1987



ZONED R-20
EVERETT W. VAUGH
L.205 F.314

ZONED R-20
ROBERT L. SPENCE
L.541 F.386

ZONED R-20
HUNT COUNTRY ESTATES
SECTION ONE
PLAT 5007

SEE SHEET 4 OF 16
MATCH LINE
SEE SHEET 6 OF 16

SHIM LOT 376
POND & OPEN SPACE 28.15 AC
(TO BE VESTICATED TO HOWARD COUNTY)
EX. 20' SENIOR RIGHT OF WAY

OWNER/DEVELOPER
MONTGOMERY ROAD I
SUITE 275 COMMERCE CENTER PLAZA
1777 REISTERTOWN ROAD
BALTIMORE, MD. 21208
(301) 484-8400

REVISIONS			
DESIGNED	DATE	BY	DESCRIPTION
DATE	11/2/87	D&D	PER HO.CO. COMMENTS DATED 6/15/87
DRAWN	8-28-87	O&D	PER HO.CO. COMMENTS DATED 8-17-87
CHECKED	12-7-87	D&D	PER HO.CO. COMMENTS DATED 10-14-87
APPROVED	2-24-88	D&D	ADDED "S" SW T'S PATHWAY'S COURT A & HUNT CHASE TERRACE

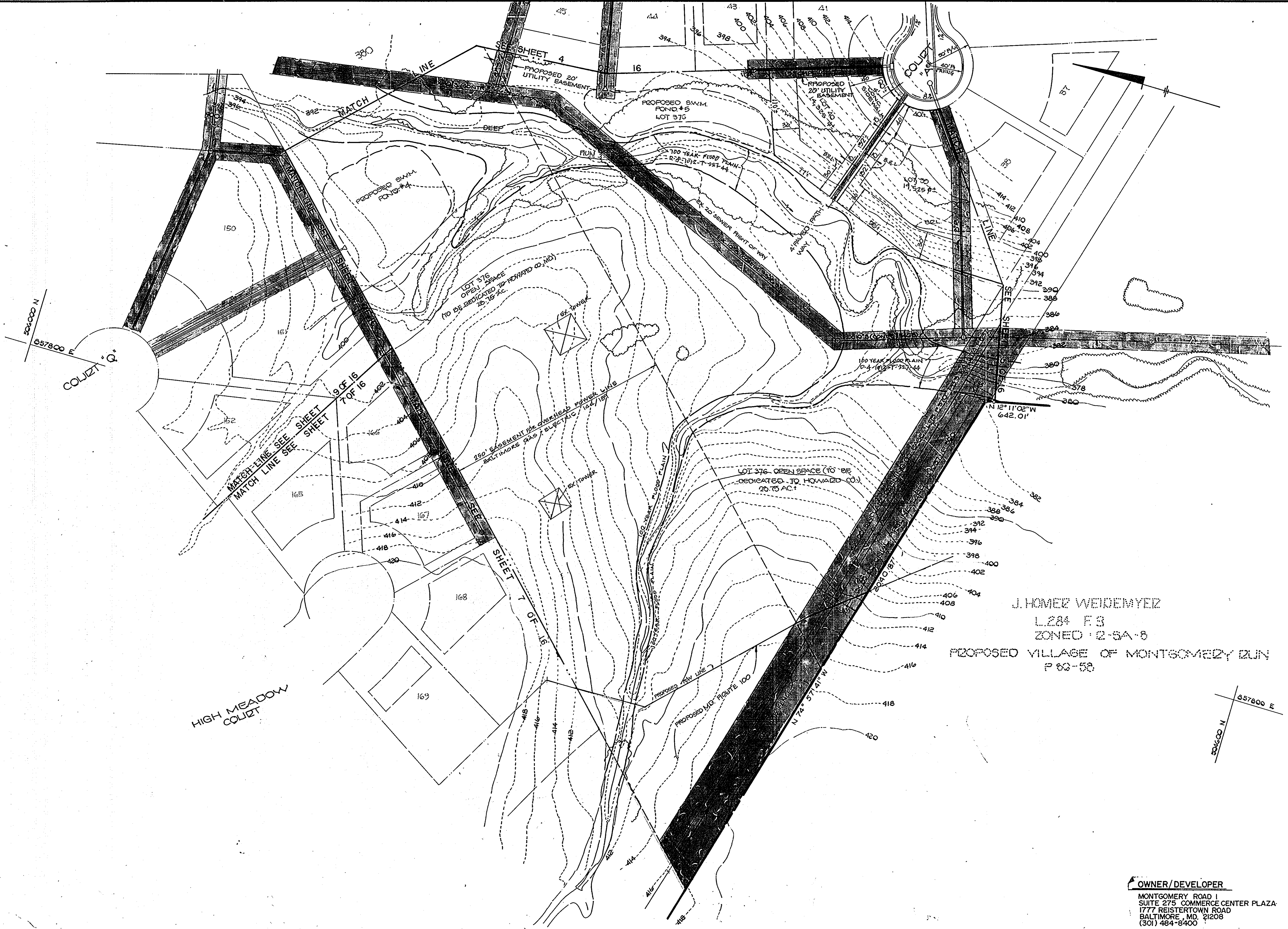
Dewberry & Davis
ENGINEERS — ARCHITECTS — PLANNERS — SURVEYORS
3300 N. RIDGE ROAD SUITE 100
ELLCOTT CITY, MARYLAND 21043
(301) 461-7478



TENTATIVELY APPROVED ON Oct. 13, 1987
DATE
OFFICE OF PLANNING AND ZONING OF
HOWARD COUNTY
PLANNING DIRECTOR
DATE 2-24-88

PRELIMINARY PLAN
MONTGOMERY MEADOWS
TAX MAP 31 PARCEL 423
2ND ELECTION DISTRICT HOWARD COUNTY, MARYLAND
MAY 6, 1987

SCALE: 1" = 50'
FORMER SUBMISSION S-87-61
CONTRACT NO.
FILE NO. MZ 814
SHEET 5 OF 16



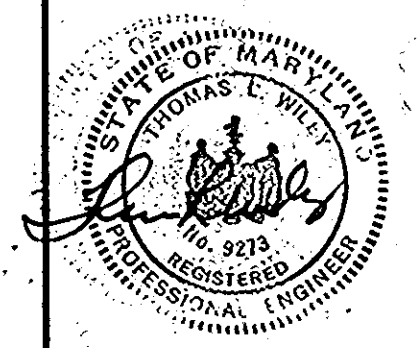
J. HOMER WEIDENMEYER
 L.284 F.3
 ZONED R-2-SA-6
 PROPOSED VILLAGE OF MONTGOMERY RUN
 P 63-58

HIGH MEADOW COLIET

OWNER/DEVELOPER
 MONTGOMERY ROAD I
 SUITE 275 COMMERCE CENTER PLAZA
 1777 REISTERTOWN ROAD
 BALTIMORE, MD. 21208
 (301) 484-8400

DESIGNED		DATE		BY		REVISIONS	
date		DATE	BY	DESCRIPTION			
		11-2-87	D&D	PER HO. CO. COMMENTS DATED 6-12-87			
		8-28-87	D&D	PER HO. CO. COMMENTS DATED 8-17-87			
		12-7-87	D&D	PER HO. CO. COMMENTS DATED 10-14-87			
		2-24-88	D&D	ADDED 4" SW TO PATHWAY COURT A			

Dewberry & Davis
 ENGINEERS — ARCHITECTS — PLANNERS — SURVEYORS
 3300 N. RIDGE ROAD SUITE 100
 ELLICOTT CITY, MARYLAND 21043
 (301) 461-7478



TENTATIVELY APPROVED ON Oct 13, 1987
 DATE
 OFFICE OF PLANNING AND ZONING OF
 HOWARD COUNTY
Ch. R. ...
 PLANNING DIRECTOR
 DATE 2-29-88

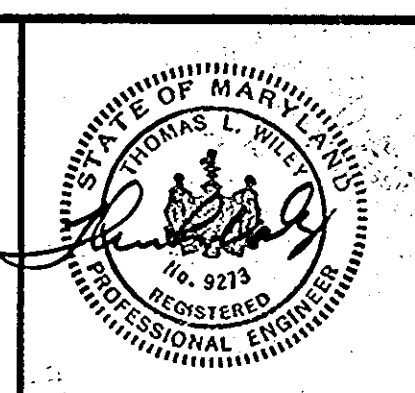
PRELIMINARY PLAN
MONTGOMERY MEADOWS
 TAX MAP 31 PARCEL 423
 2ND ELECTION DISTRICT HOWARD COUNTY, MARYLAND
 MAY 6, 1987

SCALE: 1" = 50' FORMER SUBMISSION: S-87-61 CONTRACT NO. FILE NO. MZ 814 SHEET 6 OF 16



		REVISIONS		
DESIGNED	date	DATE	BY	DESCRIPTION
		11-2-87	D&D	PER HO. CO. COMMENTS DATED 6/15/87
		8-28-87	O&D	PER HO. CO. COMMENTS DATED 8-17-87
		12-7-87	D&D	PER HO. CO. COMMENTS DATED 10/4-87
DRAWN	date			
CHECKED	date			
APPROVED	date			

Dewberry & Davis
 ENGINEERS — ARCHITECTS — PLANNERS — SURVEYORS
 3300 N. RIDGE ROAD SUITE 100
 ELLICOTT CITY, MARYLAND 21043
 (301) 461-7478



TENTATIVELY APPROVED ON OCT 13, 1987
 OFFICE OF PLANNING AND ZONING OF
 HOWARD COUNTY
Ch. R. Williams **2.29.98**
 PLANNING DIRECTOR DATE

PRELIMINARY PLAN
MONTGOMERY MEADOWS
 TAX MAP 31 PARCEL 423
 2ND ELECTION DISTRICT HOWARD COUNTY, MARYLAND
 MAY 6, 1987
 OWNER/DEVELOPER
 MONTGOMERY ROAD I
 SUITE 275 COMMERCE CENTER PLAZA
 1777 REISTERTOWN ROAD
 BALTIMORE, MD. 21208
 (301) 464-6400



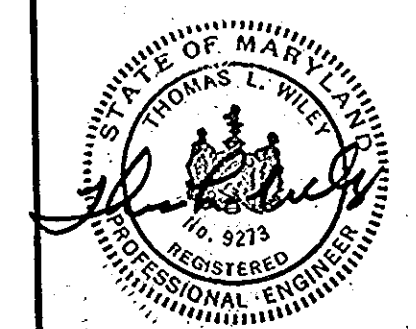
N 502200
E 856200

856200 E
502200 N

OWNER/DEVELOPER
MONTGOMERY ROAD 1
SUITE 275 COMMERCE CENTER PLAZA
1777 REISTERTOWN ROAD
BALTIMORE, MD. 21208
(301) 484-8400

		REVISIONS	
DESIGNED	DATE	BY	DESCRIPTION
	11-21-87	D&D	PER HO. CO. COMMENTS DATED 11-19-87
DRAWN	8-28-87	D&D	PER HO. CO. COMMENTS DATED 8-17-87
CHECKED	12-7-87	D&D	PER HO. CO. COMMENTS DATED 10-14-87
APPROVED			

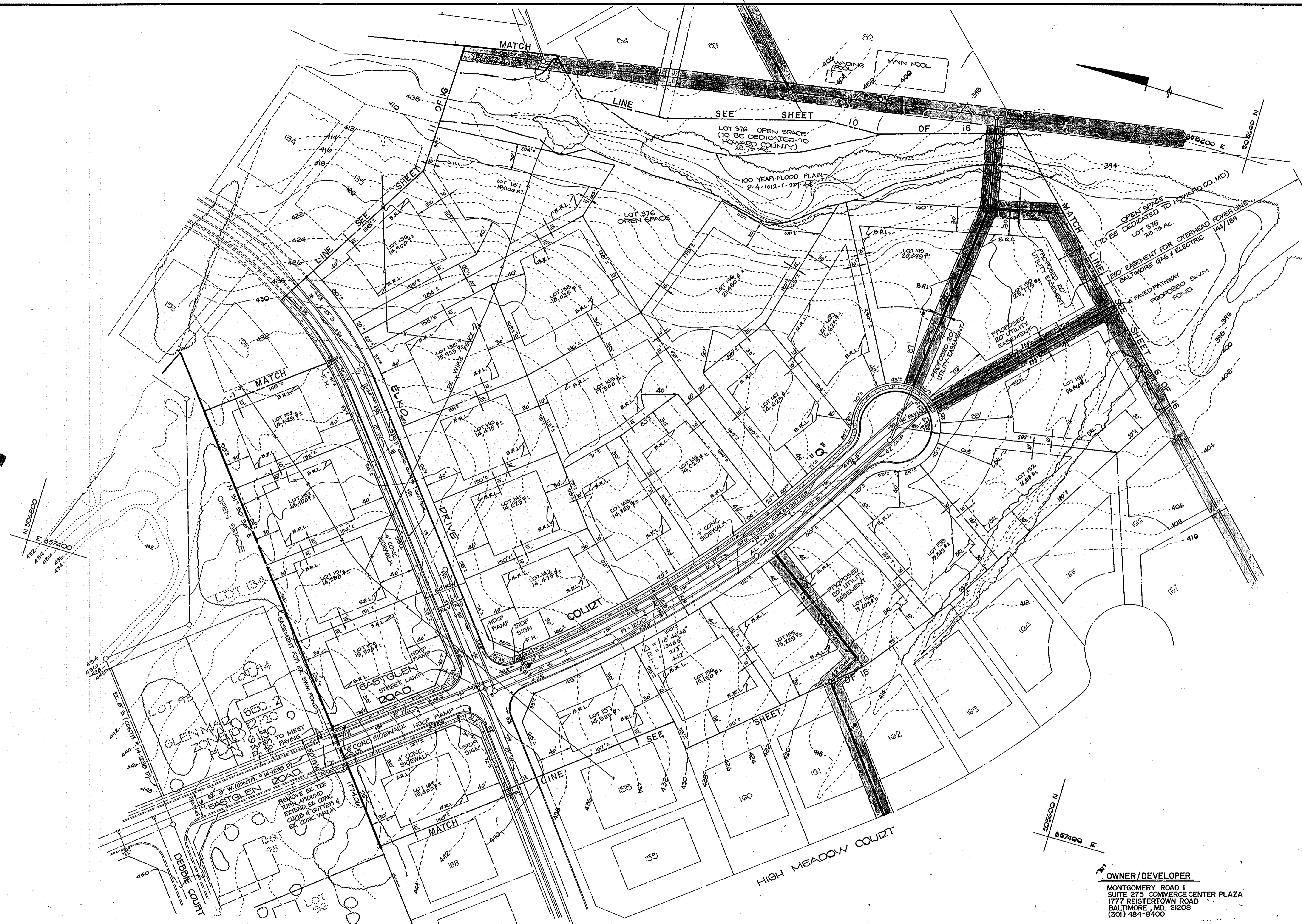
Dewberry & Davis
ENGINEERS — ARCHITECTS — PLANNERS — SURVEYORS
3300 N. RIDGE ROAD SUITE 100
ELLICOTT CITY, MARYLAND 21043
(301) 461-7478



TENTATIVELY APPROVED ON Oct 13, 1987
DATE
OFFICE OF PLANNING AND ZONING OF
HOWARD COUNTY
U. R. ...
PLANNING DIRECTOR DATE 2-29-88

PRELIMINARY PLAN
MONTGOMERY MEADOWS
TAX MAP 31 PARCEL 423
2ND ELECTION DISTRICT HOWARD COUNTY, MARYLAND
MAY 6, 1987

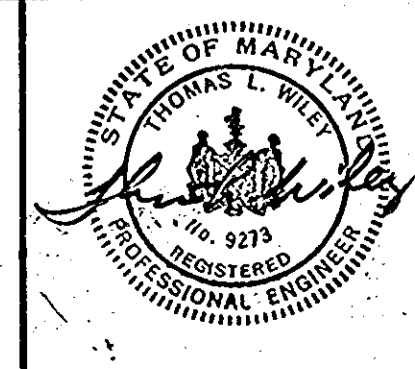
SCALE: 1" = 50'
FORMER SUBMISSION: S-87-61
CONTRACT NO. FILE NO. MZ814 SHEET 8 OF 16



OWNER/DEVELOPER
 MONTGOMERY ROAD I
 SUITE 275 COMMERCE CENTER PLAZA
 1777 REISTERTOWN ROAD
 BALTIMORE, MD 21208
 (301) 484-8400

		REVISIONS	
DESIGNED	date	DATE	BY DESCRIPTION
DRAWN	date	11-21-87	D&D PER HO.CO.COMMENTS DATED 6-15-87
CHECKED	date	8-28-87	D&D PER HO.CO.COMMENTS DATED 8-17-87
APPROVED	date	12-7-87	D&D PER HO.CO.COMMENTS DATED 10-14-87
	date		

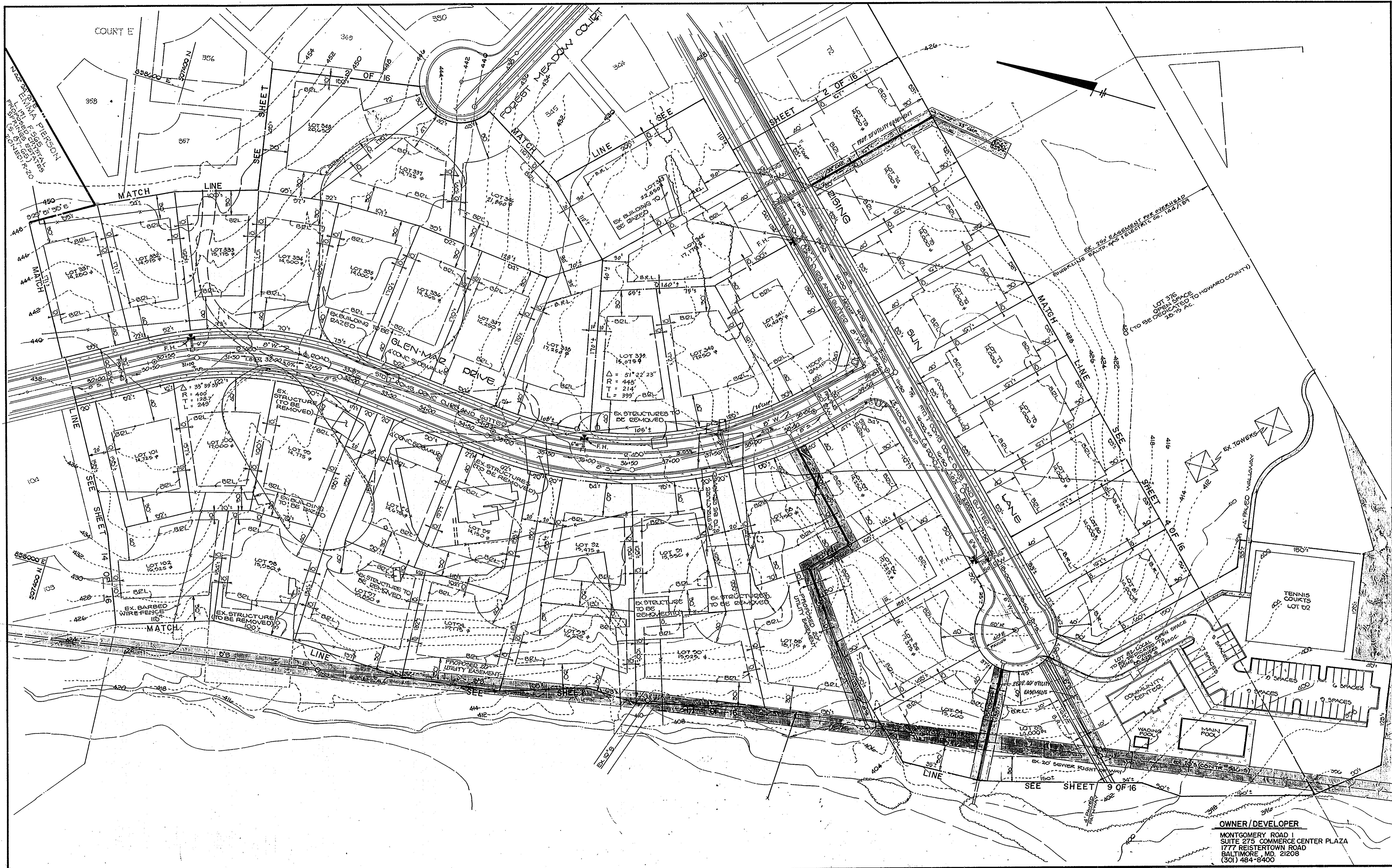
Dewberry & Davis
 ENGINEERS — ARCHITECTS — PLANNERS — SURVEYORS
 3300 N. RIDGE ROAD SUITE 100
 ELLICOTT CITY, MARYLAND 21043
 (301) 461-7478



TENTATIVELY APPROVED ON Oct 13, 1987
 OFFICE OF PLANNING AND ZONING OF
 HOWARD COUNTY
U. R. ...
 PLANNING DIRECTOR DATE

PRELIMINARY PLAN
MONTGOMERY MEADOWS
 TAX MAP 31 PARCEL 423
 2ND ELECTION DISTRICT HOWARD COUNTY, MARYLAND
 MAY 6, 1987

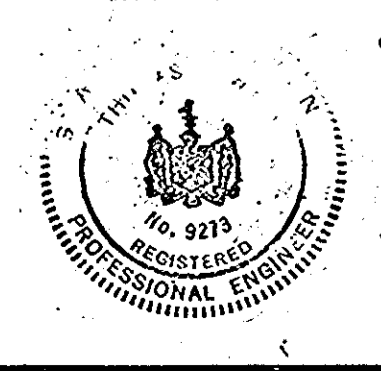
SCALE: 1"=50' FORMER SUBMISSION: S-87-61 CONTRACT NO. FILE NO. MZ 814 SHEET 9 OF 16



OWNER/DEVELOPER
 MONTGOMERY ROAD I
 SUITE 275 COMMERCE CENTER PLAZA
 1777 REISTERTOWN ROAD
 BALTIMORE, MD, 21208
 (301) 484-8400

PRELIMINARY PLAN
MONTGOMERY MEADOWS
 TAX MAP 31 PARCEL 423
 2ND ELECTION DISTRICT HOWARD COUNTY, MARYLAND
 MAY 6, 1987

TENTATIVELY APPROVED ON Oct 13, 1986
 OFFICE OF PLANNING AND ZONING OF
 HOWARD COUNTY
UnA
 PLANNING DIRECTOR
 DATE 2-29-87



Dewberry & Davis
 ENGINEERS — ARCHITECTS — PLANNERS — SURVEYORS
 3300 N. RIDGE ROAD SUITE 100
 ELLICOTT CITY, MARYLAND 21043
 (301) 461-7478

REVISIONS			
DATE	BY	DESCRIPTION	
12-18-87	D&D	PER HO. CO. COMMENTS DATED 11-18-87	
8-28-87	D&D	PER HO. CO. COMMENTS DATED 8-17-87	
12-7-87	D&D	PER HO. CO. COMMENTS DATED 10-14-87	

DESIGNED _____ date _____
 DRAWN _____ date _____
 CHECKED _____ date _____
 APPROVED _____ date _____

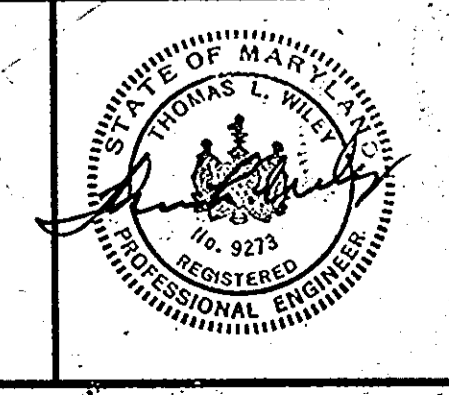
SCALE: 1" = 50' FORMER SUBMISSION: S-87-61 FILE NO. MZ814 SHEET 10 OF 16



OWNER/DEVELOPER
 MONTGOMERY ROAD I
 SUITE 275 COMMERCE CENTER PLAZA
 1777 REISTERTOWN ROAD
 BALTIMORE, MD. 21208
 (301) 484-8400

DESIGNED		DATE		BY		DESCRIPTION	
DATE	BY	DATE	BY	DATE	BY	DATE	BY
11-21-87	D&D	11-21-87	D&D	11-21-87	D&D	PER HO.CO COMMENTS DATED 11-15-87	
8-28-87	D&D	8-28-87	D&D	8-28-87	D&D	PER HO.CO COMMENTS DATED 8-17-87	
12-7-87	D&D	12-7-87	D&D	12-7-87	D&D	PER HO.CO COMMENTS DATE 10-14-87	
APPROVED		DATE		DATE			

Dewberry & Davis
 ENGINEERS — ARCHITECTS — PLANNERS — SURVEYORS
 3300 N. RIDGE ROAD SUITE 100
 ELLICOTT CITY, MARYLAND 21043
 (301) 461-7478



TENTATIVELY APPROVED ON Oct. 13, 1987
 OFFICE OF PLANNING AND ZONING OF
 HOWARD COUNTY
 PLANNING DIRECTOR
 DATE 2-27-88

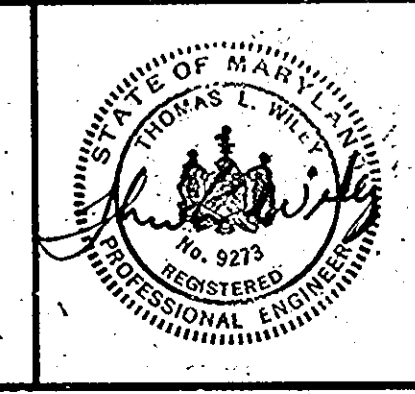
PRELIMINARY PLAN
MONTGOMERY MEADOWS
 TAX MAP 31 PARCEL 423
 2ND ELECTION DISTRICT HOWARD COUNTY, MARYLAND
 MAY 6, 1987
 SCALE: 1" = 50'
 FORMER SUBMISSION: S-87-61
 CONTRACT NO. FILE NO. MZ 814 SHEET 11 OF 16



OWNER/DEVELOPER
 MONTGOMERY ROAD 1
 SUITE 275 COMMERCE CENTER PLAZA
 1777 REISTERTOWN ROAD
 BALTIMORE, MD. 21208
 (301) 484-8400

REVISIONS			
DESIGNED	DATE	BY	DESCRIPTION
DRAWN	12-19-87	D&D	PER HO. CO. COMMENTS DATED 4-10-87
CHECKED	8-28-87	D&D	PER HO. CO. COMMENTS DATED 8-17-87
APPROVED	12-7-87	D&D	PER HO. CO. COMMENTS DATED 10-14-87

Dewberry & Davis
 ENGINEERS — ARCHITECTS — PLANNERS — SURVEYORS
 3300 N. RIDGE ROAD SUITE 100
 ELLICOTT CITY, MARYLAND 21043
 (301) 461-7478



TENTATIVELY APPROVED ON Oct 13, 1987
 OFFICE OF PLANNING AND ZONING OF
 HOWARD COUNTY
Thomas L. Dewberry
 PLANNING DIRECTOR
 DATE 2-29-88

PRELIMINARY PLAN
MONTGOMERY MEADOWS
 TAX MAP 31 PARCEL 423
 2ND ELECTION DISTRICT HOWARD COUNTY, MARYLAND
 MAY 6, 1987
 FORMER SUBMISSION: S-87-61
 CONTRACT NO. FILE NO. MZ814 SHEET 12 OF 16



OWNER/DEVELOPER
 MONTGOMERY ROAD I
 SUITE 275 COMMERCE CENTER PLAZA
 1777 REISTERTOWN ROAD
 BALTIMORE, MD. 21208
 (301) 484-8400

		REVISIONS		
DESIGNED	DATE	DATE	BY	DESCRIPTION
DRAWN	11-2-87	08-0	D&D	PER HO. CO. COMMENTS DATED 6-19-87
CHECKED	8-28-87	08-0	D&D	PER HO. CO. COMMENTS DATED 8-17-87
APPROVED	12-7-87	08-0	D&D	PER HO. CO. COMMENTS DATED 10-14-87

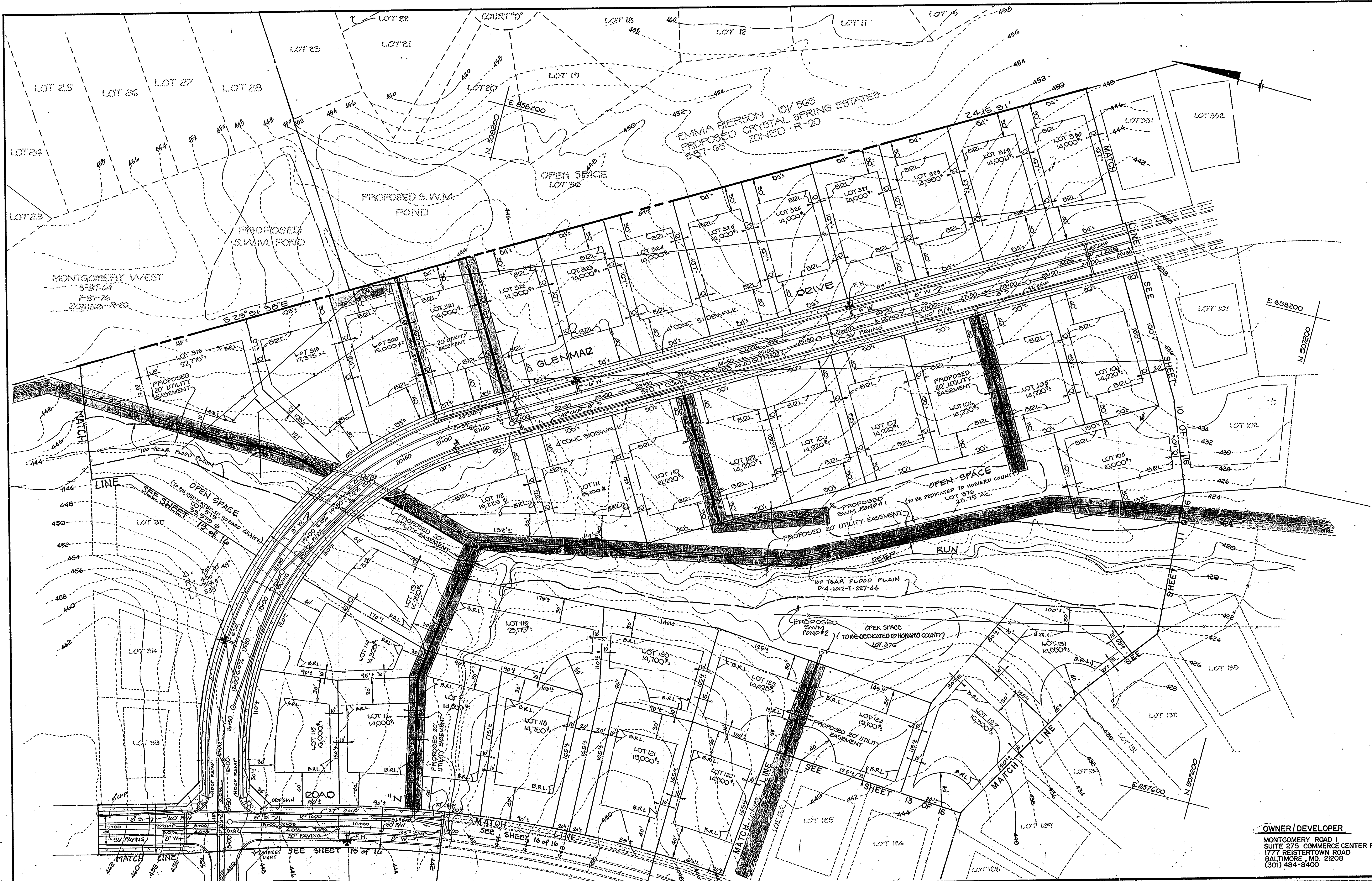
Dewberry & Davis
 ENGINEERS — ARCHITECTS — PLANNERS — SURVEYORS
 3300 N RIDGE ROAD SUITE 100
 ELLICOTT CITY, MARYLAND 21043
 (301) 461-7478



TENTATIVELY APPROVED ON Oct 15, 1987
 OFFICE OF PLANNING AND ZONING OF
 HOWARD COUNTY
 PLANNING DIRECTOR 2-21-88
 DATE

PRELIMINARY PLAN
MONTGOMERY MEADOWS
 TAX MAP 31 PARCEL 423
 2ND ELECTION DISTRICT HOWARD COUNTY, MARYLAND
 MAY 6, 1987

SCALE: 1" = 50' FORMER SUBMISSION: S-87-61 FILE NO. MZ 814- SHEET 13 OF 16



OWNER/DEVELOPER
 MONTGOMERY ROAD I
 SUITE 275 COMMERCE CENTER PLAZA
 1777 REISTERTOWN ROAD
 BALTIMORE, MD. 21208
 (301) 484-8400

DESIGNED		DATE		BY		DESCRIPTION	
DATE		12-1-87		D&D		PER HO. CO. COMMENTS DATED 12/1/87	
DATE		8-28-87		D&D		PER HO. CO. COMMENTS DATED 8/17/87	
DATE		12-7-87		D&D		PER HO. CO. COMMENTS DATED 10-14-87	
DATE							
DATE							

Dewberry & Davis

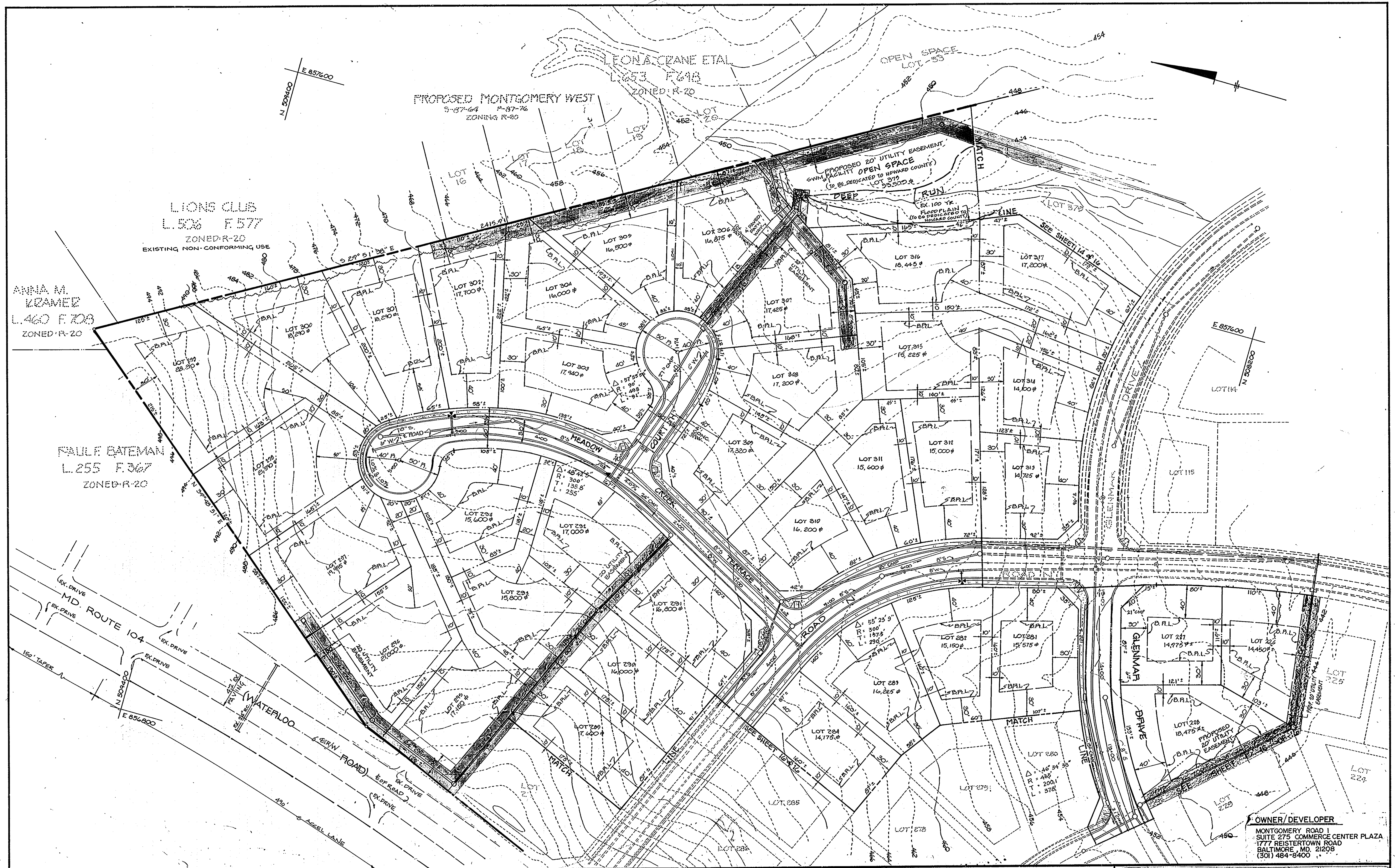
ENGINEERS — ARCHITECTS — PLANNERS — SURVEYORS
 3300 N. RIDGE ROAD SUITE 100
 ELLICOTT CITY, MARYLAND 21043
 (301) 461-7478



TENTATIVELY APPROVED ON Oct 13, 1987
 OFFICE OF PLANNING AND ZONING OF
 HOWARD COUNTY
 PLANNING DIRECTOR
 DATE 2-29-88

PRELIMINARY PLAN
MONTGOMERY MEADOWS
 TAX MAP 31 PARCEL 423
 2ND ELECTION DISTRICT, HOWARD COUNTY, MARYLAND
 MAY 6, 1987

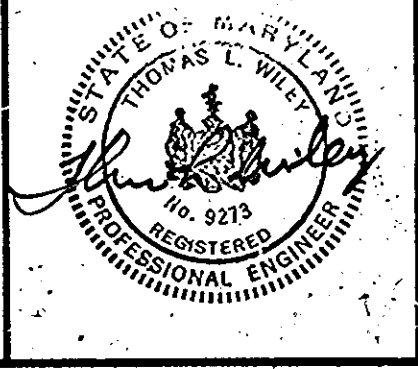
SCALE: 1" = 50'
 FORMER SUBMISSION: S-87-61
 CONTRACT NO. FILE NO. MZ 814 SHEET 14 OF 16



OWNER/DEVELOPER
 MONTGOMERY ROAD 1
 SUITE 275 COMMERCE CENTER PLAZA
 1777 REISTERTOWN ROAD
 BALTIMORE, MD. 21208
 (301) 484-8400

REVISIONS			
DESIGNED	DATE	BY	DESCRIPTION
DATE	7-02-87	D&D	PER HO. CO. COMMENTS DATED 6-18-87
DRAWN	8-28-87	D&D	PER HO. CO. COMMENTS DATED 8-17-87
CHECKED	12-7-87	D&D	PER HO. CO. COMMENTS DATED 10-14-87
APPROVED	2-24-88	D&D	ADDED 4' SW TO PATHWAY COURT H

Dewberry & Davis
 ENGINEERS — ARCHITECTS — PLANNERS — SURVEYORS
 3300 N. RIDGE ROAD, SUITE 100
 ELLICOTT CITY, MARYLAND 21043
 (301) 461-7478

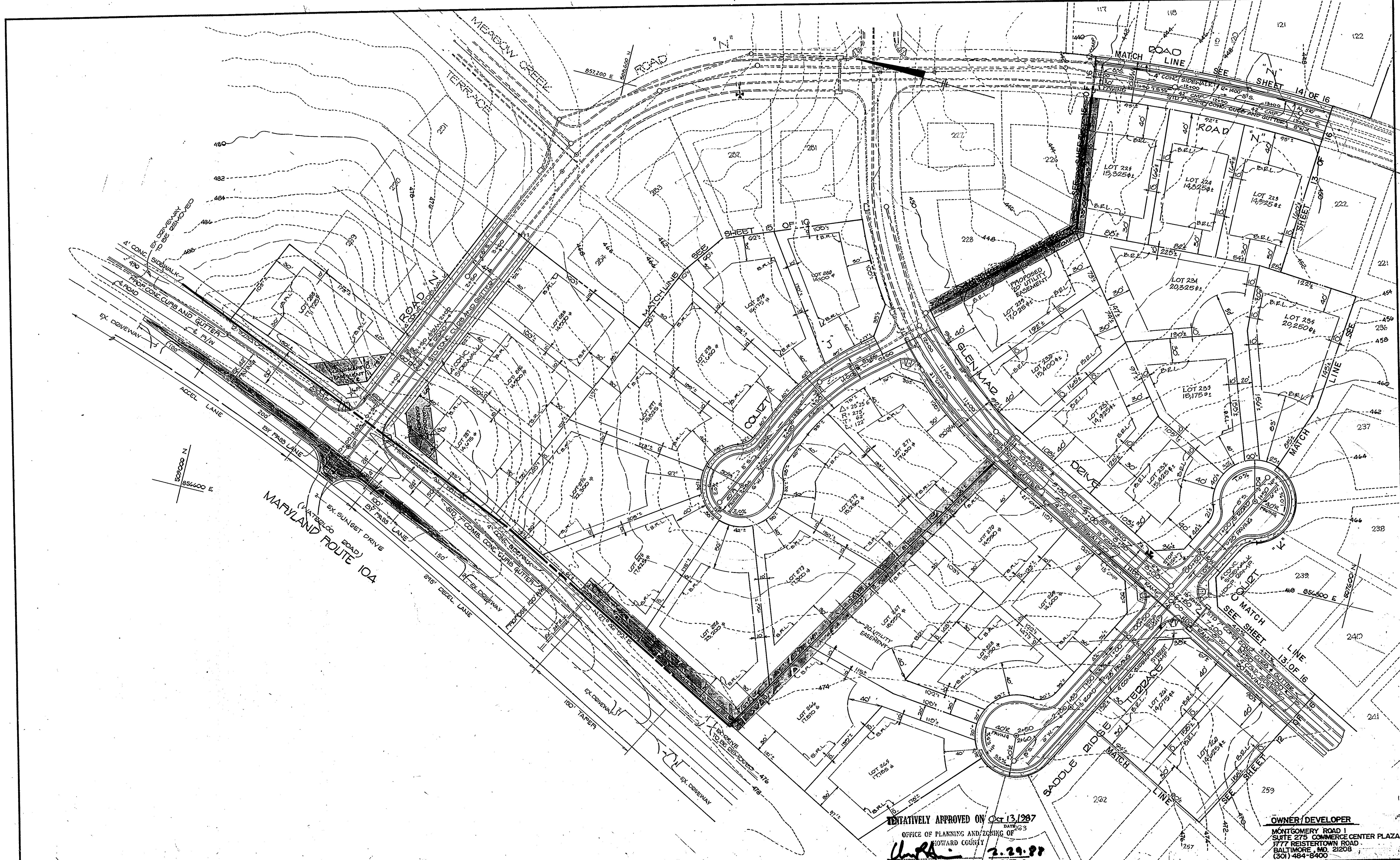


TENTATIVELY APPROVED ON Oct 13, 1987
 OFFICE OF PLANNING AND ZONING OF
 HOWARD COUNTY
 PLANNING DIRECTOR [Signature] DATE 2.29.88

PRELIMINARY PLAN
MONTGOMERY MEADOWS
 TAX MAP 31 PARCEL 423
 2ND ELECTION DISTRICT, HOWARD COUNTY, MARYLAND
 MAY 6, 1987

SCALE: 1" = 50'
 FORMER SUBMISSION# S-87-61
 CONTRACT NO. FILE NO. MZ814 SHEET 15 OF 16

P-87-71 W



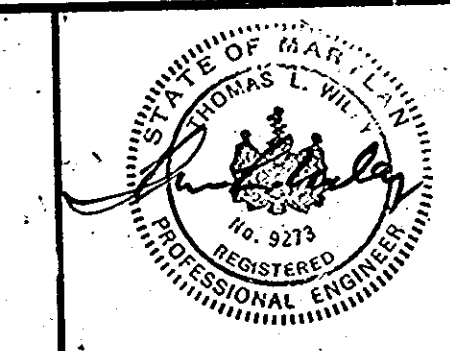
TENTATIVELY APPROVED ON Oct 13, 1987
 DATE 203
 OFFICE OF PLANNING AND ZONING OF
 HOWARD COUNTY

 PLANNING DIRECTOR DATE 2

OWNER/DEVELOPER
 MONTGOMERY ROAD I
 SUITE 275 COMMERCE CENTER PLAZA
 1777 REISTERTOWN ROAD
 BALTIMORE, MD. 21208
 (301) 464-6400

REVISIONS			
DESIGNED	DATE	BY	DESCRIPTION
	11-21-87	D&D	PER HO. CO. COMMENTS DATED 11/21/87
	8-22-87	O&D	PER HO. CO. COMMENTS DATED 8-17-87
	12-7-87	D&D	PER HO. CO. COMMENTS DATED 10-14-87
DRAWN	DATE	BY	DESCRIPTION
CHECKED	DATE	BY	DESCRIPTION
APPROVED	DATE	BY	DESCRIPTION

Dewberry & Davis
 ENGINEERS — ARCHITECTS — PLANNERS — SURVEYORS
 3300 N. RIDGE ROAD SUITE 100
 ELLICOTT CITY, MARYLAND 21043
 (301) 461-7476



PRELIMINARY PLAN
MONTGOMERY MEADOWS
 TAX MAP 31 PARCEL 423
 2ND ELECTION DISTRICT HOWARD COUNTY, MARYLAND
 MAY 6, 1987
 SCALE: 1" = 50'
 FORMER SUBMISSION: S-87-61
 CONTRACT NO. FILE NO. MZ 814 SHEET 15 OF 16