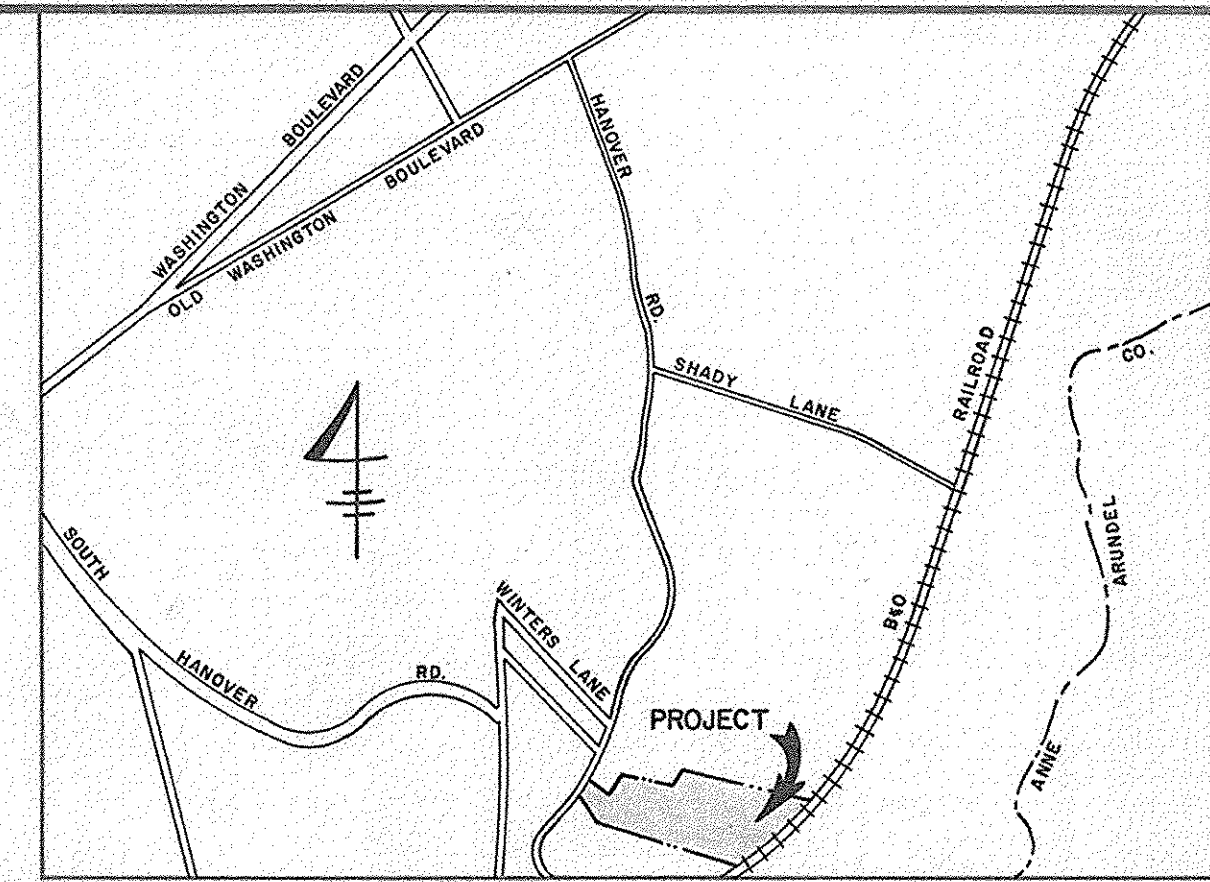
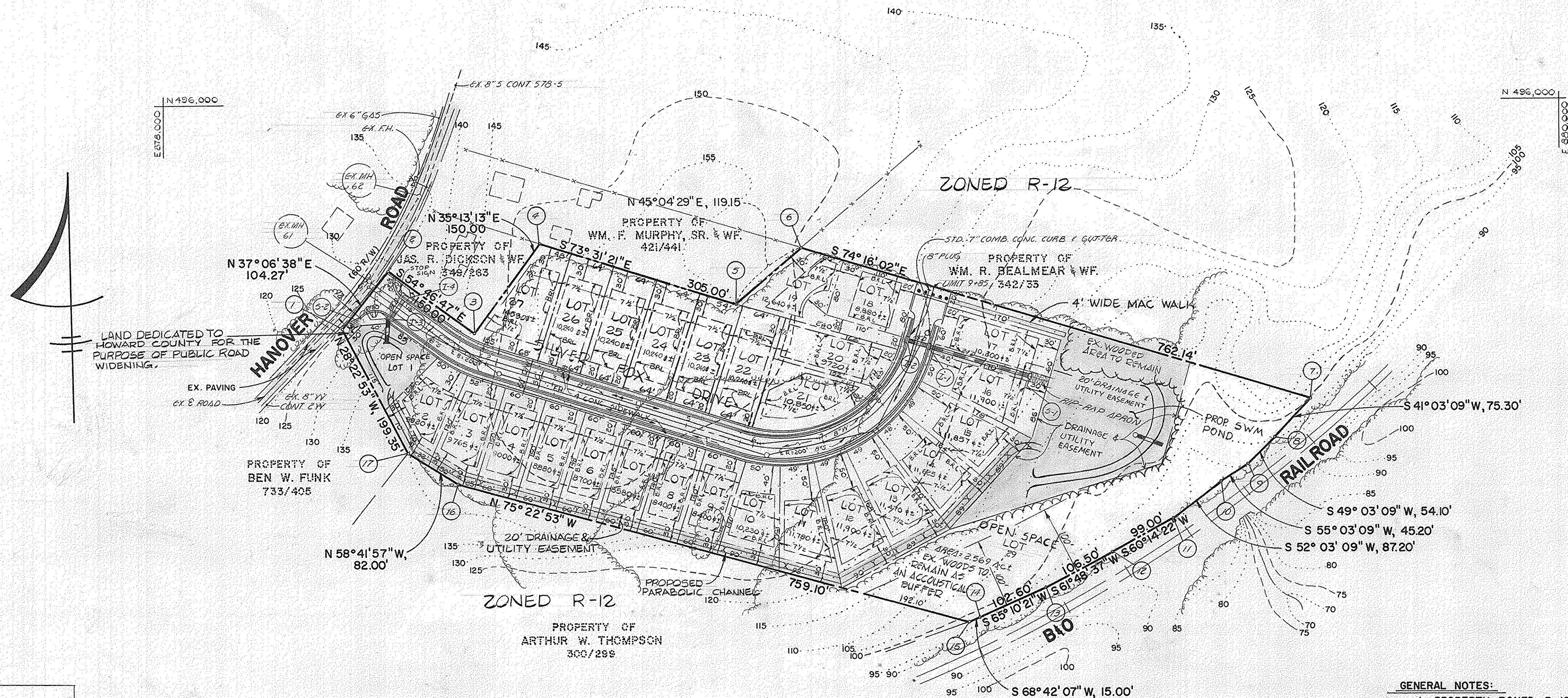


DENSITY TABULATION									
OPEN SPACE REQUIRED	OPEN SPACE PROVIDED	GROSS AREA	FLOOD PLAIN STEEP SLOPES	NET AREA	No OF DWELLING UNITS ALLOWED	FLOOD PLAIN LOT ADJUSTMENT	TOTAL No OF DWELLING UNITS	TOTAL No OF DWELLING UNITS PROPOSED	DENSITY PER ACRE
1.120 Ac.±	2.762 Ac.±	10.124 Ac.±	--	10.124 Ac.±	26.75	--	26.75	26	2.57

COORDINATE TABLE		
NO.	NORTH	EAST
1	495675.19	878265.21
2	495758.34	878328.12
3	495671.83	878450.66
4	495794.37	878537.17
5	495707.86	878829.64
6	495792.00	878914.00
7	495585.34	879647.59
8	495528.56	879598.13
9	495493.11	879557.27
10	495467.21	879520.22
11	495413.59	879451.46
12	495364.45	879365.52
13	495314.14	879271.65
14	495271.06	879178.53
15	495265.61	879164.56
16	495457.20	878430.03
17	495499.80	878359.96



VICINITY MAP
SCALE 1"=1200'



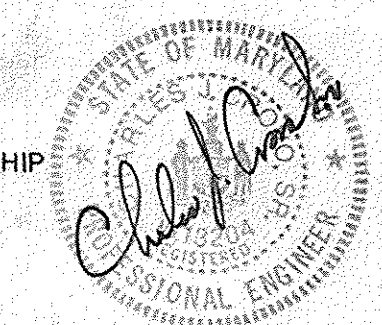
LOT SIZE AND MANDATORY OPEN SPACE				
LOT SIZE	No. OF LOTS	AREA OF LOTS (Acres ±)	MANDATORY OPEN SPACE	AREA OF OPEN SPACE (Acres ±)
8,400 - 9,599 Sq. ft.	7	1.397	30%	0.419
9,600 - 10,799 Sq. ft.	10	2.319	30%	0.464
10,800 - 11,999 Sq. ft.	7	1.868	10%	0.187
12,000 Sq. ft. OR GREATER	2	0.624	8%	0.050
TOTALS	26	6.208	--	1.120

- GENERAL NOTES:
1. PROPERTY ZONED R-12
 2. TOTAL NUMBER OF PROPOSED BUILDABLE LOTS: 26
 3. TOTAL NUMBER OF OPEN SPACE LOTS: 2
 4. TOTAL AREA OF PROPOSED LOTS: 6.208 Ac.±
 5. TOTAL AREA OF OPEN SPACE PROVIDED: 2.762 Ac.±
 6. TOTAL AREA OF OPEN SPACE REQUIRED: 1.112 Ac.±
 7. TOTAL AREA OF ROADWAY: 1.154 Ac.±
 8. TOTAL AREA OF PROPERTY: 10.124 Ac.±
 9. PUBLIC WATER AND SEWER TO BE UTILIZED.
 10. SEE OPZ FILE S-86-90
 11. THE INFILTRATION METHOD WILL BE USED FOR STORM WATER MANAGEMENT.

TENTATIVELY APPROVED ON Aug 10, 1987
 OFFICE OF PLANNING AND ZONING OF
 HOWARD COUNTY
 PLANNING DIRECTOR [Signature] DATE 9.11.87

FISHER, COLLINS AND CARTER, INC.
 CIVIL ENGINEERS AND LAND SURVEYORS
 8388 COURT AVENUE
 ELLICOTT CITY, MARYLAND 21043

OWNER & DEVELOPER
 HANOVER WOODS LIMITED PARTNERSHIP
 SUITE 114
 GORMAN PLAZA
 COLUMBIA, MD. 21045



PRELIMINARY PLAN
HANOVER WOODS

TAX MAP NO. 38 PARCELS 269,270 & 271
 FIRST ELECTION DISTRICT HOWARD COUNTY, MARYLAND
 APRIL 9, 1987 SCALE 1"=100'