

GENERAL NOTES

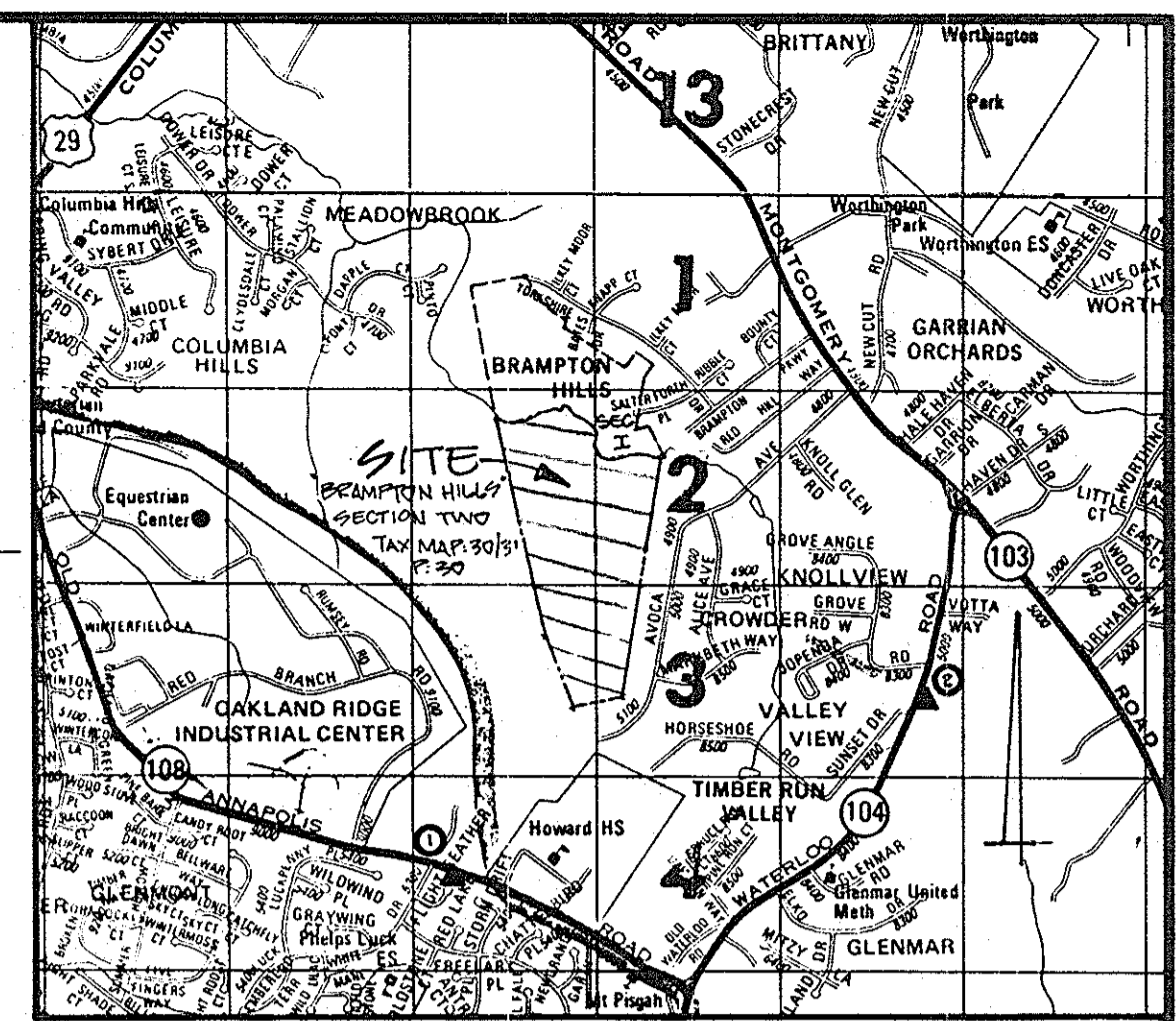
The developer is advised that this development may be required to obtain permits from the Corp of Engineers for activities in wetlands (Sec 404) and a water quality certification from the state Health Dept (Sec 401) prior to the execution of the developer agreement, the following will be required:

- a) copy of the permits issued by the Corp of Engineers and the Department of Health.
- b) a certification from the engineer that Sec. 404 and Sec. 401 do not apply and the permits are not required.

AREA AND LOT TABULATION

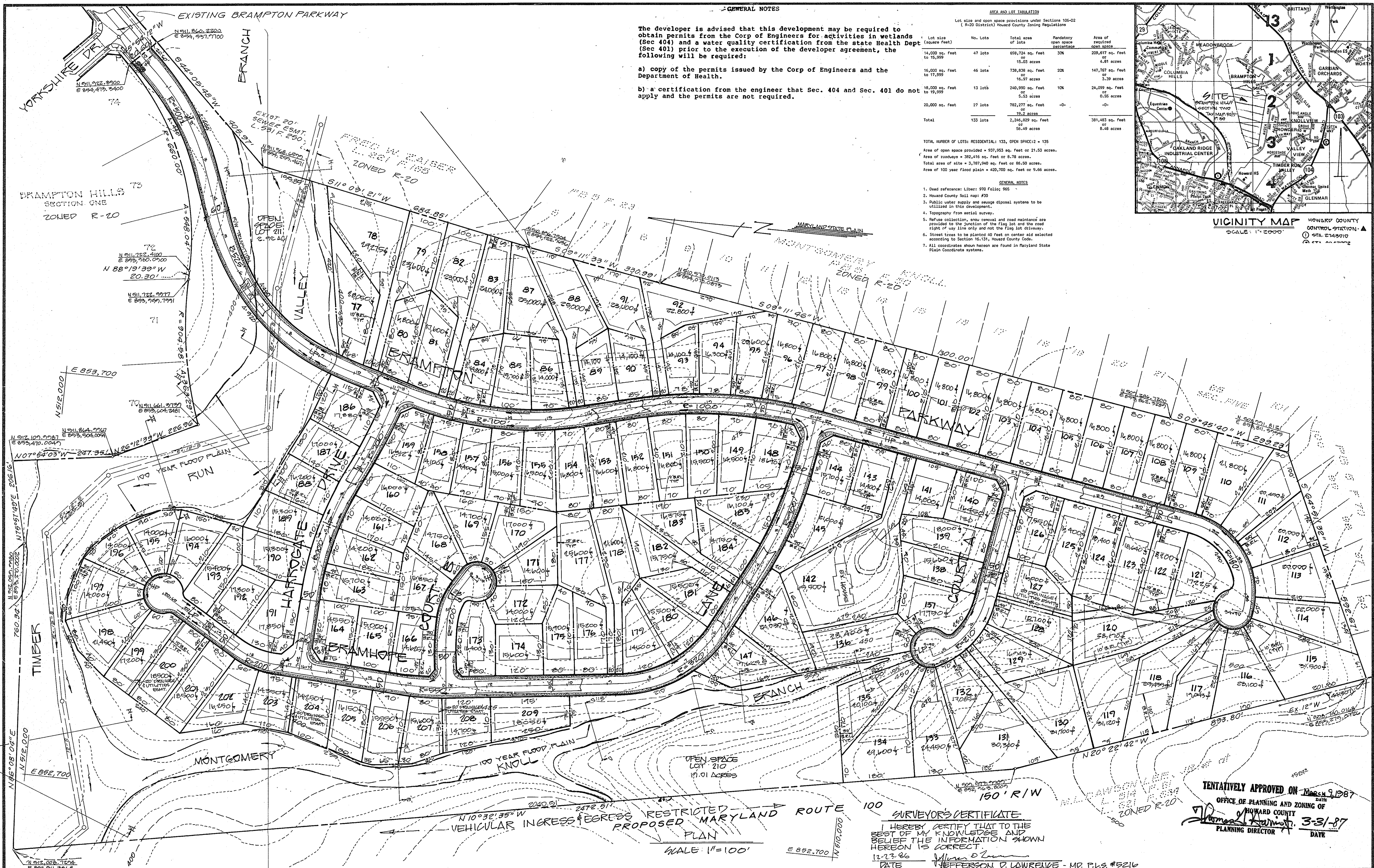
Lot size (square feet)	No. Lots	Total area of lots (square feet)	Mandatory open space percentage	Area of required open space (square feet)
14,000 sq. feet to 15,999	47 lots	658,724 sq. feet or 15.03 acres	30%	209,617 sq. feet or 4.81 acres
16,000 sq. feet to 17,999	46 lots	738,838 sq. feet or 16.97 acres	20%	147,767 sq. feet or 3.39 acres
18,000 sq. feet to 19,999	13 lots	240,990 sq. feet or 5.53 acres	10%	24,099 sq. feet or 0.55 acres
20,000 sq. feet to 21,999	27 lots	782,277 sq. feet or 18.02 acres	-0-	-0-
<b>Total</b>	<b>133 lots</b>	<b>2,246,829 sq. feet or 51.49 acres</b>		<b>381,483 sq. feet or 8.75 acres</b>

TOTAL NUMBER OF LOTS: RESIDENTIAL: 133, OPEN SPACE: 135  
 Area of open space provided = 937,953 sq. feet or 21.33 acres.  
 Area of roadways = 352,416 sq. feet or 8.08 acres.  
 Total area of site = 3,767,940 sq. feet or 86.50 acres.  
 Area of 100 year flood plain = 420,700 sq. feet or 9.66 acres.



VICINITY MAP  
 SCALE: 1" = 2000'  
 HOWARD COUNTY CONTROL STATION: A  
 STA. 214910  
 214910

- GENERAL NOTES
1. Dead reference: Liber: 970 Folio: 955
  2. Howard County Soil map: #30
  3. Public water supply and sewage disposal systems to be utilized in this development.
  4. Topography from aerial survey.
  5. Refuse collection, snow removal and road maintenance are provided to the junction of the flag lot and the road right of way line only and not the flag lot driveway.
  6. Street trees to be planted 40 feet or center and adjacent according to Section 16.131, Howard County Code.
  7. All coordinates shown hereon are found in Maryland State Plain Coordinate system.



**SURVEYOR'S CERTIFICATE**  
 I HEREBY CERTIFY THAT TO THE BEST OF MY KNOWLEDGE AND BELIEF THE INFORMATION SHOWN HEREON IS CORRECT.  
 12.23.86  
 DATE  
 JEFFERSON D. LAWRENCE - MD. P.L.S. #5216

TENTATIVELY APPROVED ON MARCH 9, 1987  
 DATE  
 OFFICE OF PLANNING AND ZONING OF  
 HOWARD COUNTY  
 PLANNING DIRECTOR  
 3-31-87  
 DATE

Owner/Developer:	NO.	REVISIONS	DATE
DELTA CORPORATION 101 CHESTNUT STREET GAITHERSBURG, MD. 20877 (301) 748-2718			

**DEVELOPMENT CONSULTANTS GROUP, INC.**  
 17904 GEORGIA AVENUE # 102  
 OLNEY, MARYLAND 20832  
 301-924-4570

**PRELIMINARY PLAN SECTION 7 BRAMPTON HILLS**  
 TAX MAP: 30431 PARCEL: 50  
 ELLICOTT CITY (2<sup>ND</sup>) ELECTION DISTRICT  
 HOWARD COUNTY, MARYLAND

DATE DEC. 86  
 DRAWN M.N.L.  
 CHECKED M.L.S.  
 SCALE 1/4" = 100'

Sheet 1 of 1  
 PROJECT NO. 169-02

P-97-09