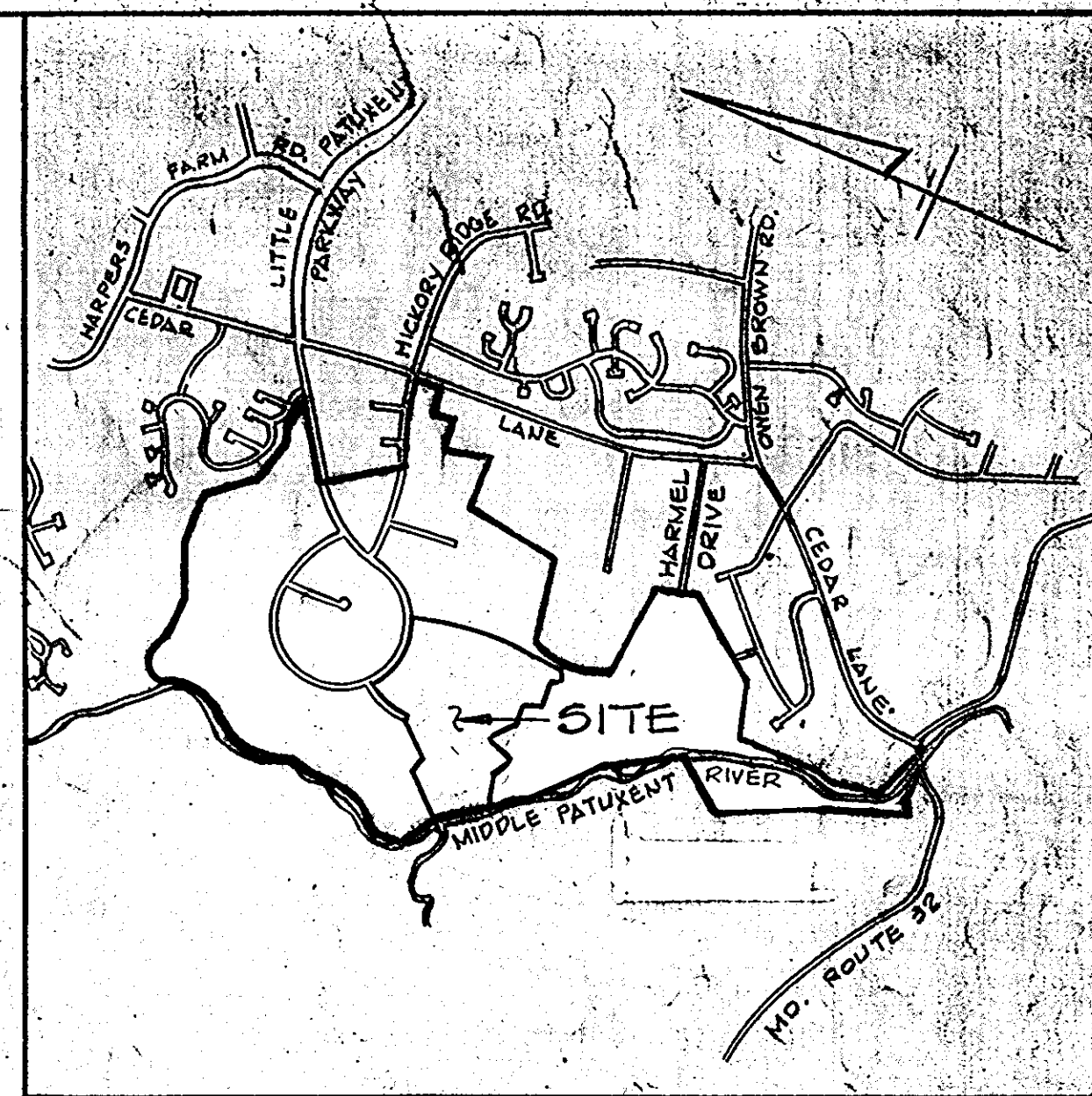


LOT AND AREA DATA

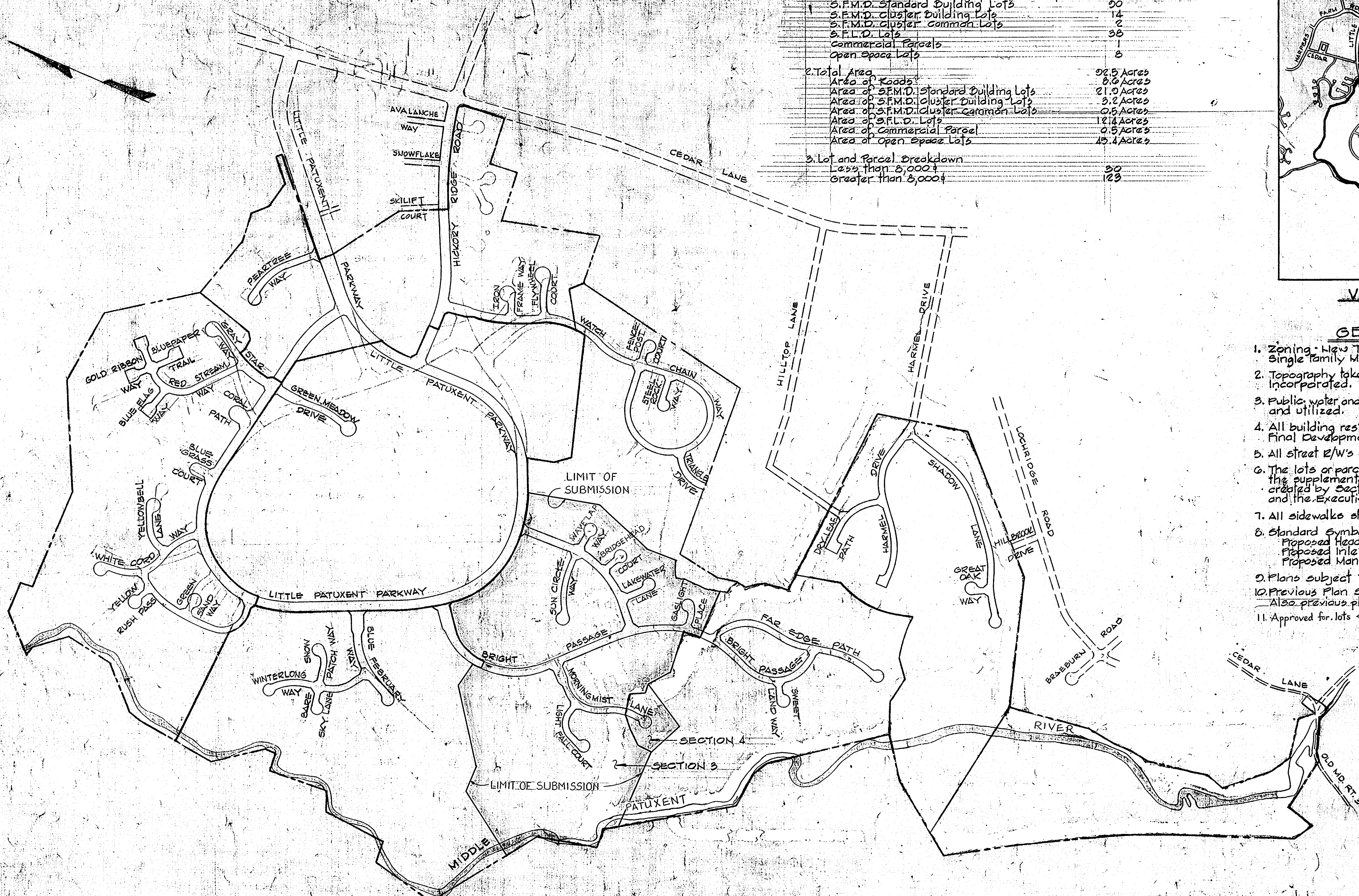
1. Total Number of Lots (Including open space and parcels)	153
S.F.M.D. Standard Building Lots	90
S.F.M.D. Cluster Building Lots	14
S.F.M.D. Cluster Common Lots	2
S.F.L.D. Lots	38
Commercial Parcels	1
Open Space Lots	8
2. Total Area	92.5 Acres
Area of Roads	8.0 Acres
Area of S.F.M.D. Standard Building Lots	21.0 Acres
Area of S.F.M.D. Cluster Building Lots	3.2 Acres
Area of S.F.M.D. Cluster Common Lots	0.5 Acres
Area of S.F.L.D. Lots	12.4 Acres
Area of Commercial Parcel	0.5 Acres
Area of Open Space Lots	15.4 Acres
3. Lot and Parcel Breakdown	
Less than 8,000 sq. ft.	80
Greater than 8,000 sq. ft.	123



VICINITY MAP
Scale: 1" = 2,000'

GENERAL NOTES

1. Zoning: New Town (Single Family Low Density, Single Family Medium Density, and Open Space).
2. Topography taken from aerial topo prepared by Maps Incorporated.
3. Public water and sewer systems to be made available and utilized.
4. All building restriction lines shall be in accordance with Final Development Plan Phase 101.
5. All street R/W's are 50' wide except as noted.
6. The lots or parcels shown on these plans are subject to the supplemental sewer in-aid-of-construction charge created by Section 20.311 A of the Howard County Code, and the Executive Order No. 72-9.
7. All sidewalks shall be 4' wide.
8. Standard Symbols:
 Proposed Headwalls Proposed Pipes
 Proposed Inlets Proposed Concrete Sidewalks
 Proposed Manholes Proposed Pathway System
9. Plans subject to V.P. 82-56 and V.P. 83-106.
10. Previous Plan S-81-04 and Planning Board Case 130. Also previous plans P-83-10, P-83-12 and P-83-14.
11. Approved for lots <8000 SF. by Planning Board on 6-25-86.



INDEX MAP
Scale: 1" = 400'

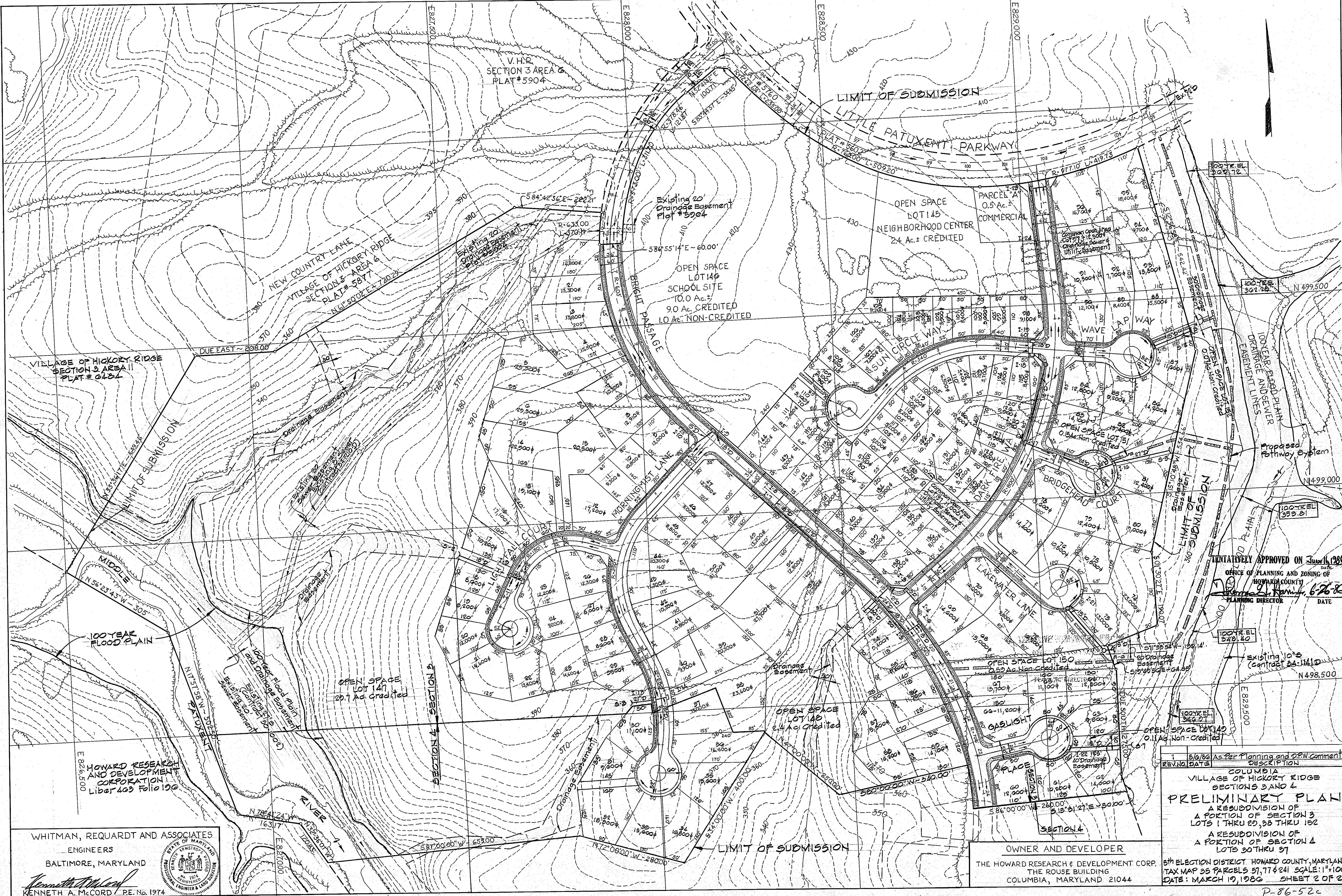
TENTATIVELY APPROVED ON JUNE 16, 1986
DATE
OFFICE OF PLANNING AND ZONING OF
HOWARD COUNTY
J. Daniel Hamill 6-26-86
PLANNING DIRECTOR DATE

WHITMAN, REQUARDT AND ASSOCIATES
ENGINEERS
BALTIMORE, MARYLAND
Kenneth A. McCord
KENNETH A. MCCORD, P.E. No. 10714

STORM WATER MANAGEMENT FOR THIS PROJECT HAS BEEN PROVIDED IN THE VILLAGE OF HICKORY RIDGE SECTION 3 AREA 1, F83-129

OWNER AND DEVELOPER:
THE HOWARD RESEARCH & DEVELOPMENT CORP.
THE ROUSE BUILDING
COLUMBIA, MARYLAND 21050

REV. NO.	DATE	DESCRIPTION
1	5/9/86	As per Planning and DPW comments
2		COLUMBIA VILLAGE OF HICKORY RIDGE SECTIONS 3 AND 4 PRELIMINARY PLAN A RESUBDIVISION OF A PORTION OF SECTION 3 LOTS 1 THRU 29, 30 THRU 152
3		A RESUBDIVISION OF A PORTION OF SECTION 4 LOTS 30 THRU 37
4		SUBJECT DISTRICT HOWARD COUNTY, MARYLAND TAX MAP OF PARCELS 871221 871222 871223 871224 871225 871226 871227 871228 871229 871230 871231 871232 871233 871234 871235 871236 871237 871238 871239 871240 871241 871242 871243 871244 871245 871246 871247 871248 871249 871250 871251 871252 871253 871254 871255 871256 871257 871258 871259 871260 871261 871262 871263 871264 871265 871266 871267 871268 871269 871270 871271 871272 871273 871274 871275 871276 871277 871278 871279 871280 871281 871282 871283 871284 871285 871286 871287 871288 871289 871290 871291 871292 871293 871294 871295 871296 871297 871298 871299 871300 871301 871302 871303 871304 871305 871306 871307 871308 871309 871310 871311 871312 871313 871314 871315 871316 871317 871318 871319 871320 871321 871322 871323 871324 871325 871326 871327 871328 871329 871330 871331 871332 871333 871334 871335 871336 871337 871338 871339 871340 871341 871342 871343 871344 871345 871346 871347 871348 871349 871350 871351 871352 871353 871354 871355 871356 871357 871358 871359 871360 871361 871362 871363 871364 871365 871366 871367 871368 871369 871370 871371 871372 871373 871374 871375 871376 871377 871378 871379 871380 871381 871382 871383 871384 871385 871386 871387 871388 871389 871390 871391 871392 871393 871394 871395 871396 871397 871398 871399 871400 871401 871402 871403 871404 871405 871406 871407 871408 871409 871410 871411 871412 871413 871414 871415 871416 871417 871418 871419 871420 871421 871422 871423 871424 871425 871426 871427 871428 871429 871430 871431 871432 871433 871434 871435 871436 871437 871438 871439 871440 871441 871442 871443 871444 871445 871446 871447 871448 871449 871450 871451 871452 871453 871454 871455 871456 871457 871458 871459 871460 871461 871462 871463 871464 871465 871466 871467 871468 871469 871470 871471 871472 871473 871474 871475 871476 871477 871478 871479 871480 871481 871482 871483 871484 871485 871486 871487 871488 871489 871490 871491 871492 871493 871494 871495 871496 871497 871498 871499 871500



VILLAGE OF HICKORY RIDGE
SECTION 3 AREA II
PLAT # 6284

V.H.R.
SECTION 3 AREA 6
PLAT # 5904

NEW COUNTRY LANE
VILLAGE OF HICKORY RIDGE
SECTION 3 - AREA 6
PLAT # 5877
N 61° 50' 00" E - 720.25'

LIMIT OF SUBMISSION
LITTLE PATUXENT PARKWAY
PLAT # 5760
R-277.10' L-419.73'

Existing 20'
Drainage Easement
Plot # 5904

OPEN SPACE
LOT 145
NEIGHBORHOOD CENTER
2.4 Ac. ± CREDITED

OPEN SPACE
LOT 146
SCHOOL SITE
10.0 Ac. ±
9.0 Ac. CREDITED
1.0 Ac. NON-CREDITED

PARCEL 'A'
0.5 Ac. ±
COMMERCIAL

100' E.L.
300.72'

100' E.L.
302.72'

100' E.L.
303.81'

100' E.L.
349.40'

100' E.L.
349.81'

100' E.L.
346.21'

100' E.L.
349.40'

100' E.L.
346.21'

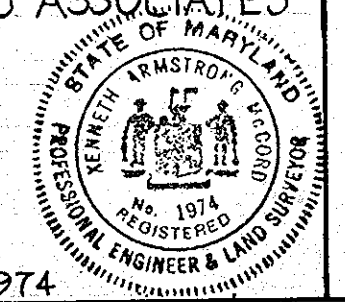
5/16/86 As Per Planning and P&E Comments
REV. NO. DATE DESCRIPTION

COLUMBIA
VILLAGE OF HICKORY RIDGE
SECTIONS 3 AND 4
PRELIMINARY PLAN
A RESUBDIVISION OF
A PORTION OF SECTION 3
LOTS 1 THRU 20, 28 THRU 152
A RESUBDIVISION OF
A PORTION OF SECTION 4
LOTS 30 THRU 37

5th ELECTION DISTRICT HOWARD COUNTY, MARYLAND
TAX MAP 95 PARCELS 57, 77 & 241 SCALE: 1"=100'
DATE: MARCH 19, 1986 SHEET 2 OF 2

WHITMAN, REQUARDT AND ASSOCIATES
ENGINEERS
BALTIMORE, MARYLAND

Kenneth A. McCord
KENNETH A. McCORD PE. No. 1974



OWNER AND DEVELOPER
THE HOWARD RESEARCH & DEVELOPMENT CORP.
THE ROUSE BUILDING
COLUMBIA, MARYLAND 21044