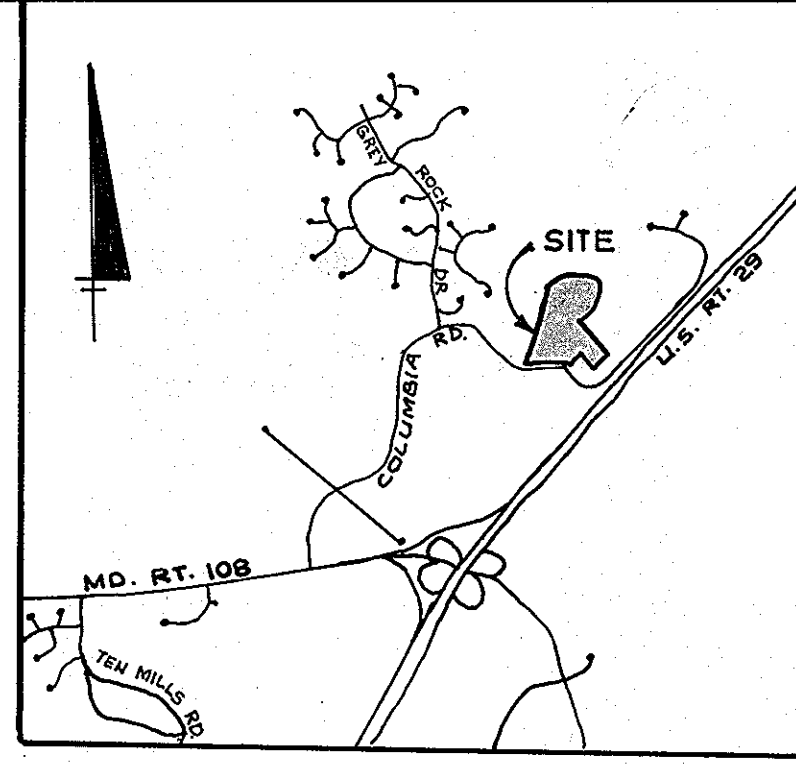
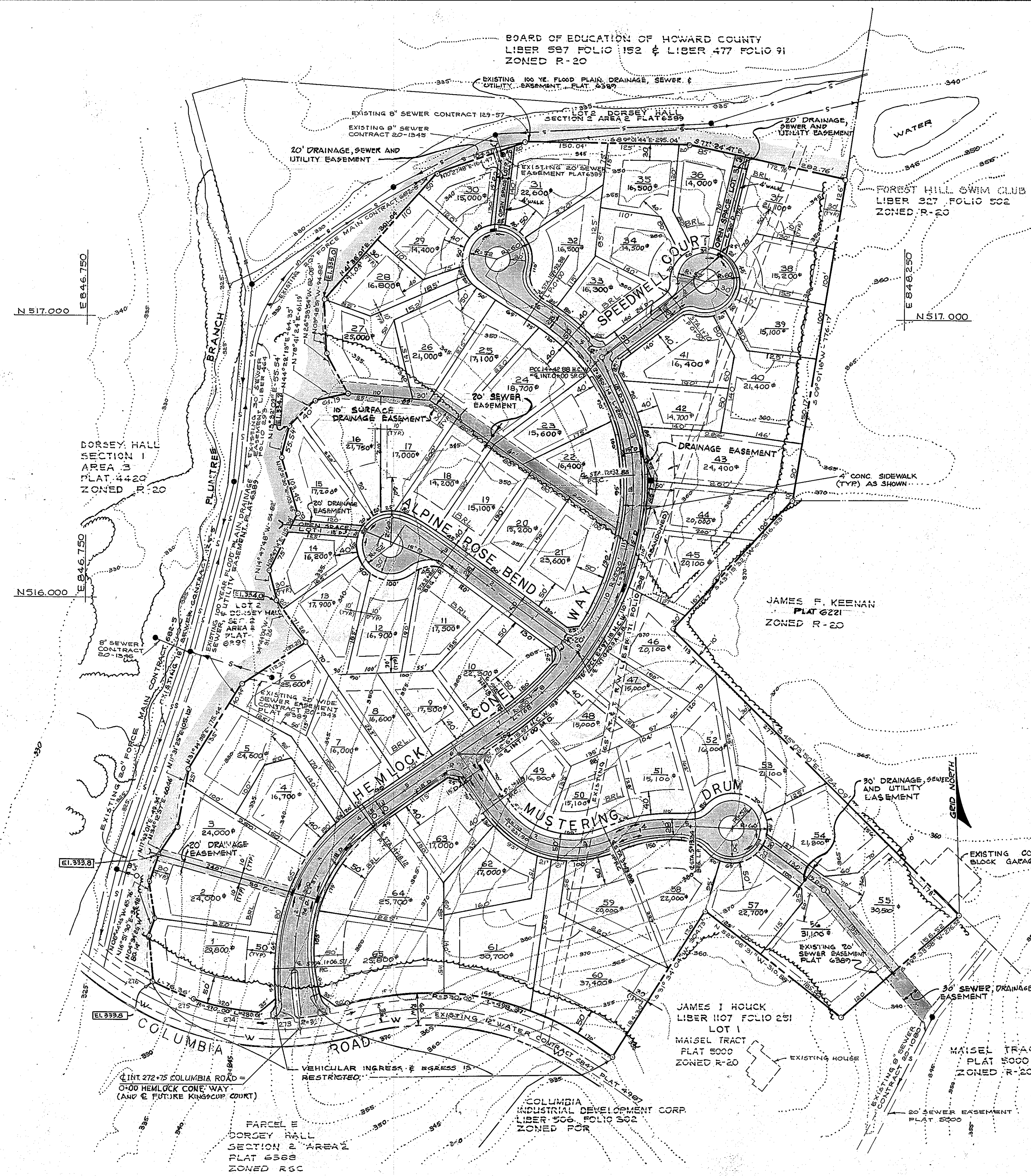


BOARD OF EDUCATION OF HOWARD COUNTY  
 LIBER 587 FOLIO 152 & LIBER 477 FOLIO 91  
 ZONED R-20



VICINITY MAP  
 SCALE: 1"=3000'



GENERAL NOTES

1. TOPOGRAPHY SHOWN HEREON IS TAKEN FROM AERIAL TOPO PREPARED BY AERO SERVICE CORPORATION IN 1968.
2. PUBLIC WATER AND SEWER MAIN EXTENSION WILL BE REQUIRED TO SERVE THE LOTS WITHIN THE DEVELOPMENT.
3. EXISTING ZONING IS R-20 PER 8-2-85 COMPREHENSIVE ZONING.
4. ALL DIMENSIONS SHOWN ARE APPROXIMATE.
5. ALL COORDINATES SHALL BE BASED ON THE MD. STATE GRID SYSTEM.
6. ALL ELEVATIONS SHOWN ARE BASED ON U.S.C. AND G.S. MEAN SEA LEVEL DATUM 1929.
7. SEDIMENT AND EROSION CONTROL MEASURES WILL BE INCORPORATED IN INDIVIDUAL SITE DEVELOPMENT PLANS.
8. STORM WATER MANAGEMENT FOR THIS PROJECT IS PROVIDED BY FACILITIES CONSTRUCTED UNDER FILE F-79-46.
9. O.P.Z. FILES S-78-20; P-84-27; F-85-56, S-86-32.
10. THIS IS A SUBDIVISION OF PARCEL A AS RECORDED AMONG THE HOWARD COUNTY LAND RECORDS AS PLAT 6389.

TABULATION TABLE				
LOT SIZE (SQ. FT.)	NO. OF LOTS	AREA OF LOTS ACRES	MANDATORY OPEN SPACE PROVISIONS	OPEN SPACE ACRES
20,000 OR LARGER	28	15.32	SUBD. REGS.	0.91
18,000 TO 19,999	1	0.45	10%	0.04
16,000 TO 17,999	21	8.08	20%	1.62
14,000 TO 15,999	15	5.12	30%	1.54
TOTAL =	65	28.95		4.11

AREA OF TRACT WITHIN 100 YEAR FLOODPLAIN = 0  
 AREA OF TRACT WITHIN SLOPES OF 25% OR GREATER = 0

TENTATIVELY APPROVED ON April 23, 1986

OFFICE OF PLANNING AND ZONING OF  
 HOWARD COUNTY  
*Thomas J. Hanley* 4-28-86  
 PLANNING DIRECTOR DATE

SITE ANALYSIS  
 ZONING: R-20  
 TOTAL ACREAGE: 33.32 AC.  
 TOTAL LOTS: 65  
 TOTAL OPEN SPACE LOTS: 3 (.24 AC.)  
 TOTAL ROADWAY AREA: 4.12 AC.

NOTE: ADDITIONAL 3.87 ACRES OF OPEN SPACE IS PROVIDED IN R-20 ZONING DISTRICT IN DORSEY HALL SECTION I.

Date	No	Revision Description
		OWNER AND DEVELOPER COLUMBIA INDUSTRIAL DEVELOPMENT CORPORATION c/o THE HOWARD RESEARCH AND DEVELOPMENT CORPORATION THE ROUSE COMPANY 10275 Little Patuxent Parkway Columbia Maryland 21044
		CENTURY ENGINEERING, INC. CONSULTING ENGINEERS - PLANNERS TOWSON, MARYLAND 21204
		AREA DORSEY HALL SECTION 2-AREA 2 TAX MAP 30-PART OF PARCEL 12 2nd ELECTION DISTRICT OF HOWARD COUNTY, MD.
		TITLE PRELIMINARY PLAN DORSEY HALL-PARCEL "A"
Des By G.O.Z.	Scale: 1"=100'	Proj No 85-0117
Drn By R.F.	Date 12-13-85	Drawing No. 1 OF 1
Chk By G.R.K.	Approved	

1-20-86  
 Date  
  
 Gregory R. Hanley  
 Professional Engr. No. 11432