

VICINITY MAP
SCALE: 1" = 1200'

- NOTES**
- 1) TOTAL AREA OF SECTION THREE 4.70 AC±
 - 2) PRESENT ZONING RSC
 - 3) TOTAL NUMBER OF DWELLING UNITS ALLOWED (SEE TABLE BELOW) 24
 - 4) TOTAL AREA OF OPEN SPACE REQUIRED 20% X 4.7 = 0.94 AC±
 - 5) TOTAL AREA OF OPEN SPACE PROVIDED (SEE TABLE BELOW) 3.21 AC±
 - 6) TOTAL AREA OF PUBLIC ROAD 0.91 AC±
 - 7) PUBLIC WATER AND PUBLIC SEWER SYSTEM WILL BE USED.
 - 8) SEE OFFICE OF PLANNING AND ZONING FILES 8 03-14 & P 03-21 022
 - 9) STORM WATER MANAGEMENT FOR THIS SECTION HAS BEEN PROVIDED IN SECTION 2
 - 10) B.R.L. WITHIN THE LOTS = BUILDING RESTRICTION LINE.

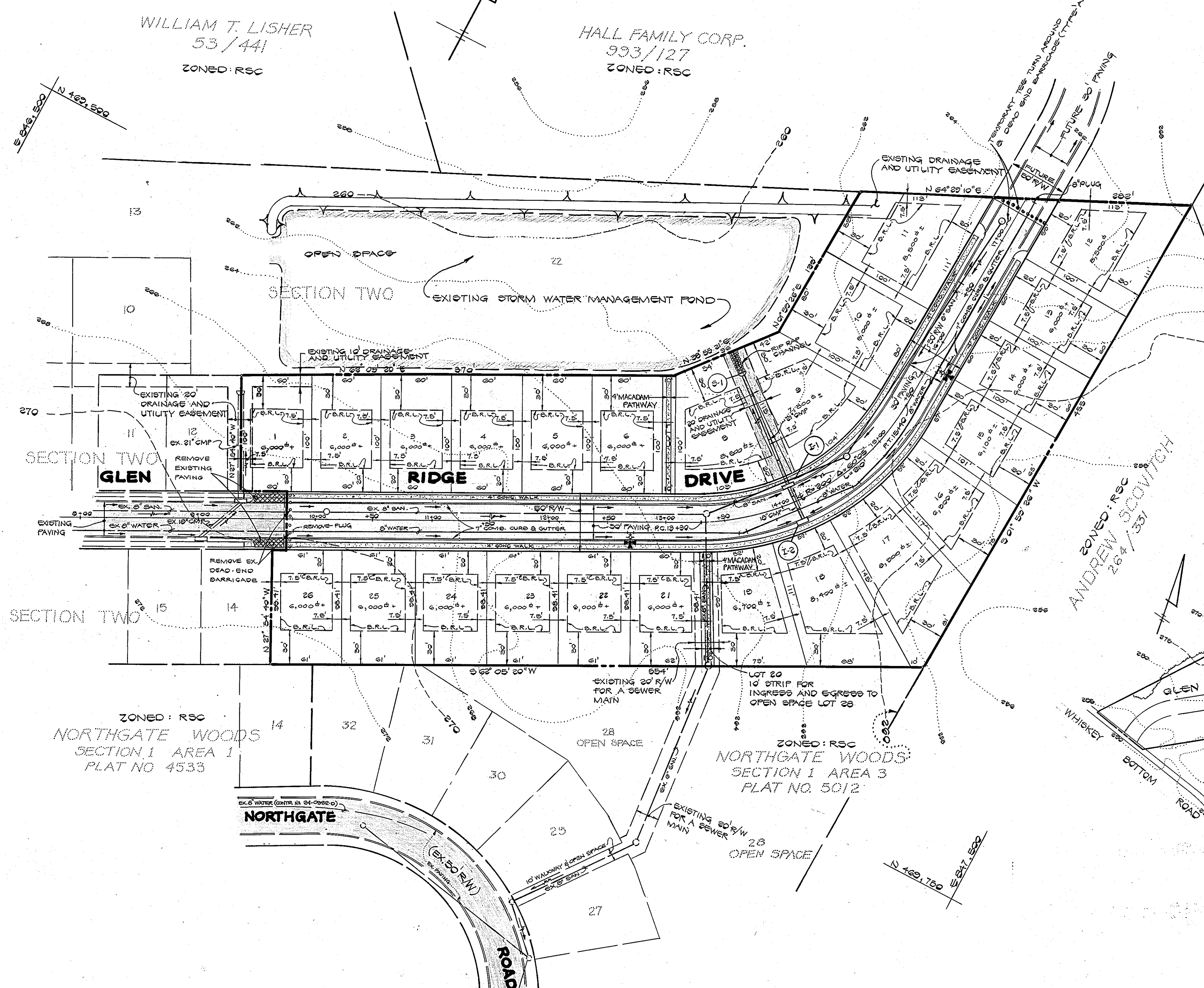
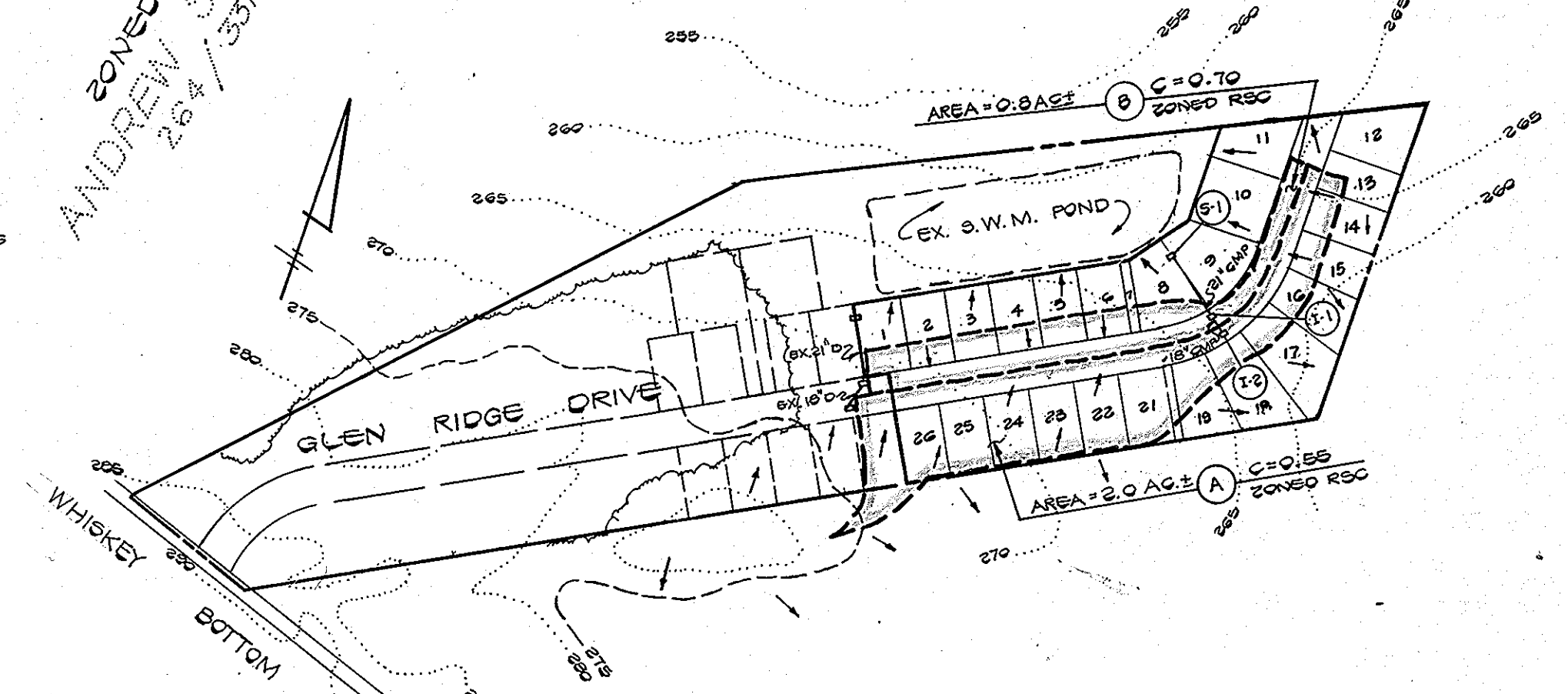
DENSITY TABULATION

	SECTION ONE	SECTION TWO	SECTION THREE	TOTALS
GROSS AREA	2.42 AC±	6.54 AC±	4.70 AC±	13.66 AC±
NET AREA	2.42 AC±	6.54 AC±	4.70 AC±	13.66 AC±
NO. OF DWELLING UNITS ALLOWED	4 x 2.42 = 9.7	4 x 6.54 = 26.2	4 x 4.70 = 18.8	54.7
NO. OF DWELLING UNITS PROPOSED	0	21	24	54

OPEN SPACE TABULATION

	SECTION ONE	SECTION TWO	SECTION THREE	TOTALS
GROSS AREA	2.42 AC±	6.54 AC±	4.70 AC±	13.66 AC±
OPEN SPACE REQUIRED	20% X 2.42 = 0.48	20% X 6.54 = 1.31 AC±	20% X 4.70 = 0.94 AC±	2.73 AC±
OPEN SPACE PROVIDED	0.51 AC±	2.65 AC±	0.05 AC±	3.21 AC±

DRAINAGE AREA MAP
SCALE: 1" = 200'



U.S. ZONED: RSC
P.B. # 3572

ZONED: RSC
ANDREW SCOVITCH
264/331

TENTATIVELY APPROVED ON APRIL 6, 1984

OFFICE OF PLANNING AND ZONING OF HOWARD COUNTY
Thomas G. Davis 1-3-85
PLANNING DIRECTOR DATE

PRELIMINARY PLAN
NORTH RIDGE

SECTION THREE

TAX MAP 47 P/O PARCEL 147
6TH ELECTION DISTRICT HOWARD COUNTY, MD.
SCALE: 1" = 50' MARCH 23, 1984

OWNER AND DEVELOPER

HILLRIDGE DEVELOPMENT COMPANY
4206 SOUTHFIELD ROAD
ELLCOTT CITY, MARYLAND 21043

FISHER, COLLINS AND CARTER, INC.

CIVIL ENGINEERS AND LAND SURVEYORS
6986 COURT AVENUE
ELLCOTT CITY, MARYLAND 21043
TELEPHONE: 461-2255



Charles J. Crovo, Sr. 2/5/84
CHARLES J. CROVO, SR. MD. REG. NO. 13204 DATE