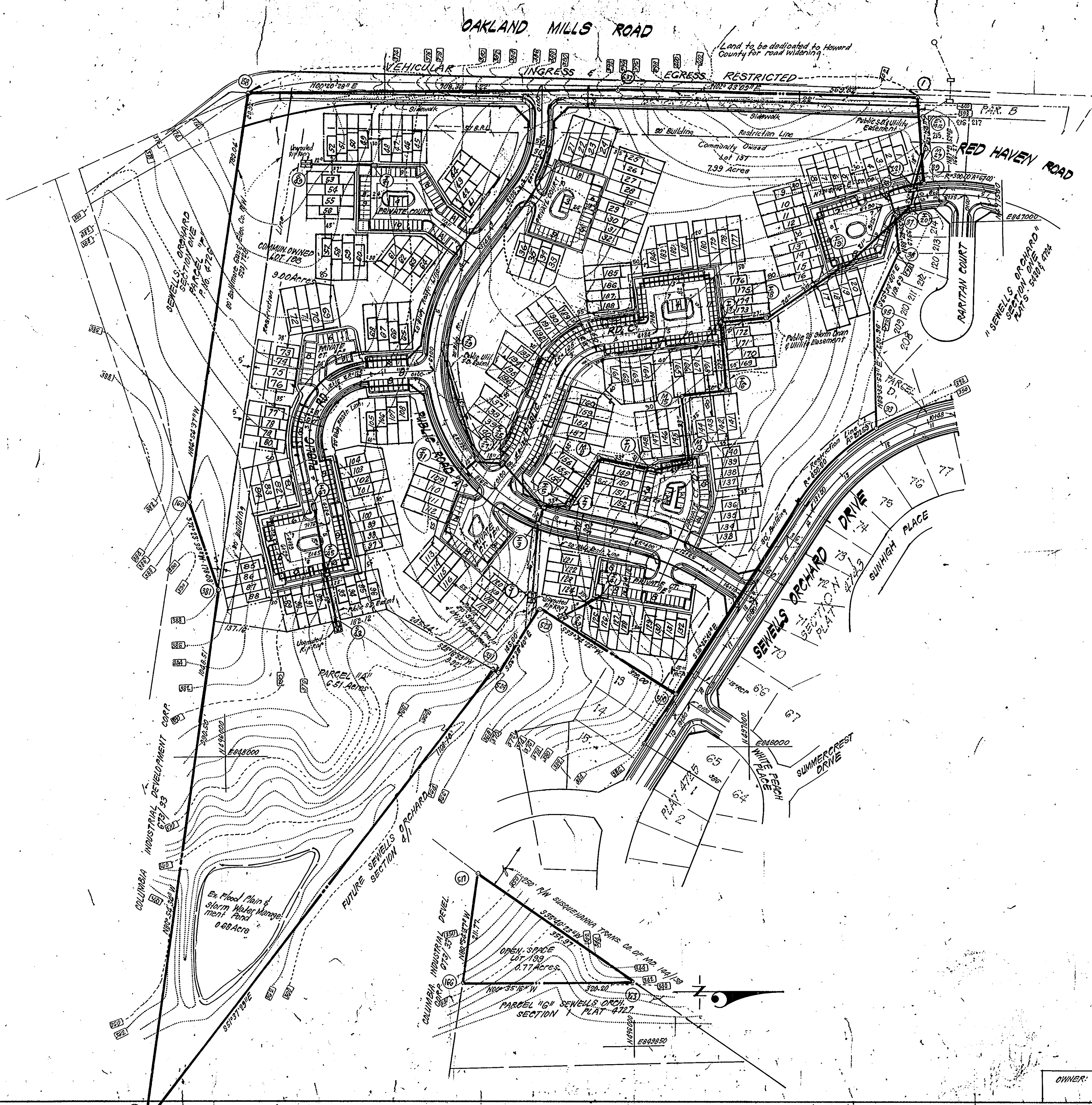
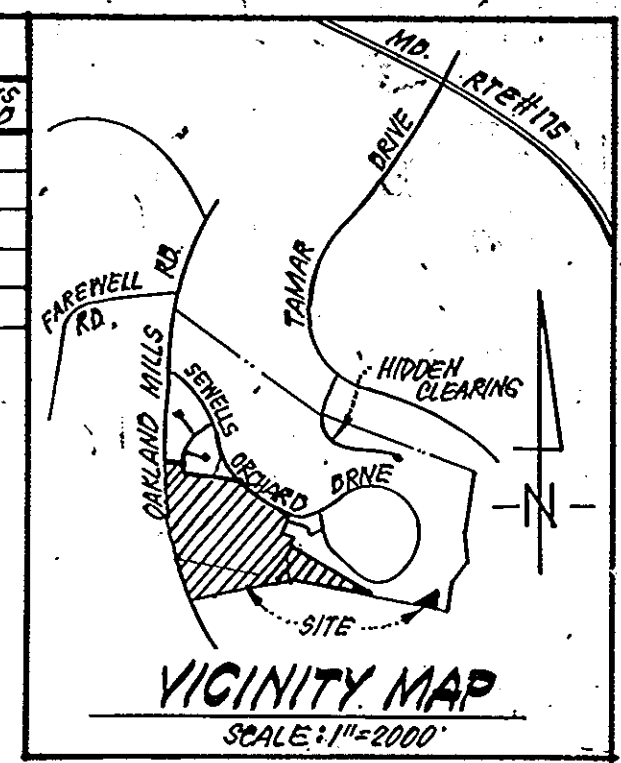


NO.	NORTH	EAST
1	497,543.33	846,753.40
2	497,543.33	847,532.03
3	497,543.33	847,532.03
4	497,543.33	847,532.03
5	497,543.33	847,532.03
6	497,543.33	847,532.03
7	497,543.33	847,532.03
8	497,543.33	847,532.03
9	497,543.33	847,532.03
10	497,543.33	847,532.03
11	497,543.33	847,532.03
12	497,543.33	847,532.03
13	497,543.33	847,532.03
14	497,543.33	847,532.03
15	497,543.33	847,532.03
16	497,543.33	847,532.03
17	497,543.33	847,532.03
18	497,543.33	847,532.03
19	497,543.33	847,532.03
20	497,543.33	847,532.03
21	497,543.33	847,532.03
22	497,543.33	847,532.03
23	497,543.33	847,532.03
24	497,543.33	847,532.03
25	497,543.33	847,532.03
26	497,543.33	847,532.03
27	497,543.33	847,532.03
28	497,543.33	847,532.03
29	497,543.33	847,532.03
30	497,543.33	847,532.03
31	497,543.33	847,532.03
32	497,543.33	847,532.03
33	497,543.33	847,532.03
34	497,543.33	847,532.03
35	497,543.33	847,532.03
36	497,543.33	847,532.03
37	497,543.33	847,532.03
38	497,543.33	847,532.03
39	497,543.33	847,532.03
40	497,543.33	847,532.03
41	497,543.33	847,532.03
42	497,543.33	847,532.03
43	497,543.33	847,532.03
44	497,543.33	847,532.03
45	497,543.33	847,532.03
46	497,543.33	847,532.03
47	497,543.33	847,532.03
48	497,543.33	847,532.03
49	497,543.33	847,532.03
50	497,543.33	847,532.03
51	497,543.33	847,532.03
52	497,543.33	847,532.03
53	497,543.33	847,532.03
54	497,543.33	847,532.03
55	497,543.33	847,532.03
56	497,543.33	847,532.03
57	497,543.33	847,532.03
58	497,543.33	847,532.03
59	497,543.33	847,532.03
60	497,543.33	847,532.03
61	497,543.33	847,532.03
62	497,543.33	847,532.03
63	497,543.33	847,532.03
64	497,543.33	847,532.03
65	497,543.33	847,532.03
66	497,543.33	847,532.03
67	497,543.33	847,532.03
68	497,543.33	847,532.03
69	497,543.33	847,532.03
70	497,543.33	847,532.03
71	497,543.33	847,532.03
72	497,543.33	847,532.03
73	497,543.33	847,532.03
74	497,543.33	847,532.03
75	497,543.33	847,532.03
76	497,543.33	847,532.03
77	497,543.33	847,532.03
78	497,543.33	847,532.03
79	497,543.33	847,532.03
80	497,543.33	847,532.03
81	497,543.33	847,532.03
82	497,543.33	847,532.03
83	497,543.33	847,532.03
84	497,543.33	847,532.03
85	497,543.33	847,532.03
86	497,543.33	847,532.03
87	497,543.33	847,532.03
88	497,543.33	847,532.03
89	497,543.33	847,532.03
90	497,543.33	847,532.03
91	497,543.33	847,532.03
92	497,543.33	847,532.03
93	497,543.33	847,532.03
94	497,543.33	847,532.03
95	497,543.33	847,532.03
96	497,543.33	847,532.03
97	497,543.33	847,532.03
98	497,543.33	847,532.03
99	497,543.33	847,532.03
100	497,543.33	847,532.03

DENSITY TABULATION									
SECTION	AREA (AC.)	OPEN SPACE REQ'D. (AC.)	OPEN SPACE PROVIDED (AC.)	OPEN SPACE MIN. IN FLOOD PLAIN	NET AREA (AC.)	FLOOD PLAIN LOT ADJUSTMENT	NO. OF LOTS PERMITTED	NO. OF LOTS PROVIDED	
1	46.38	9.28	11.65	4.30	42.08	17	185	155	
2/1	21.85	4.37	12.57	5.02	16.83	20	87	41	
2/2	16.67	3.33	2.18	NONE	16.67	NONE	66	60	
3/1	36.48	7.30	16.99	0.68	35.81	2	145	136	
TOTALS	121.38	24.38	43.39	10.00	111.39	39	483	482	



- SITE ANALYSIS:**
- Zoning: RSC.
  - No. of Lots: 196 plus 2 Community owned Lots. plus 1 Parcel
  - Area Tabulation: See Table
  - Density: See Table
  - Roadway Dedication: 4.90 Acres
  - All Units shall be provided with a min. of 2 Parking Spaces
  - Existing Drainage & Utility Easement recorded in Liber 938, Folio 240 to be abandoned.
  - No. of Parking Spaces Required: 392
  - No. of Parking Spaces Provided: 392

- GENERAL NOTES:**
- Topography was compiled from Aerial Surveys.
  - The area included is located on Tax Map #36 Parcel #247.
  - Installation of Traffic Control Devices shall be in accordance with the latest edition of the Manual of Uniform Control Devices.
  - Public Water and Sewer to be utilized.
  - Sediment and Erosion Control Measures to be provided with the submission of Rd. Constr. and Site Development Plan.
  - All Public Utilities shown as existing were compiled from available records.
  - See Soils Map #25
  - Coordinates shown hereon are in the Maryland State Plane Coordinate System, and are based on Howard County Control Station "Sewell"
  - Existing Drainage & Utility Easement Recorded in L. 938, F. 240 to be abandoned.
  - See Office of Planning & Zoning File 5-84-28
  - | AREA TABULATION |                |             |
|-----------------|----------------|-------------|
| ROAD DEDICATION | LOTS & PARCELS | OPEN SPACE  |
| 4.90 Acres      | 14.59 Acres    | 16.99 Acres |
|                 |                | 36.48 Acres |
  - Open Space Lot 139 will not be recorded until vehicular access to that lot has been provided.

TENTATIVELY APPROVED ON MARCH 27, 1984  
 OFFICE OF PLANNING AND ZONING OF  
 HOWARD COUNTY  
 Acting PLANNING DIRECTOR Anna Bondal DATE 5-8-84

- LEGEND:**
- Existing Contour (2.0' Interval)
  - Existing Storm Drain
  - Proposed Storm Drain
  - Building Restriction Line
  - Typical Lot Dimensions:



**CLARK · FINEFROCK & SACKETT**  
 ENGINEERS · PLANNERS · SURVEYORS  
 11315 LOCKWOOD DRIVE · SILVER SPRING, MARYLAND 20904 · (301) 593-3400

DESIGNED: PRELIMINARY PLAN SCALE: 1"=100'  
 DRAWN: WRM: DRAWING: 10"=1'  
 CHECKED: NPK: JOB NO.: 83-076  
 WRM: SECTION 3 AREA 1  
 6TH ELECTION DISTRICT  
 HOWARD COUNTY, MARYLAND  
 DATE: FOR: LIGHTPOINT ASSOCIATES  
 3307 Ducks Foot Lane  
 Columbia, Maryland 21043  
 DEC., 1983 FILE NO.: 83-076-F