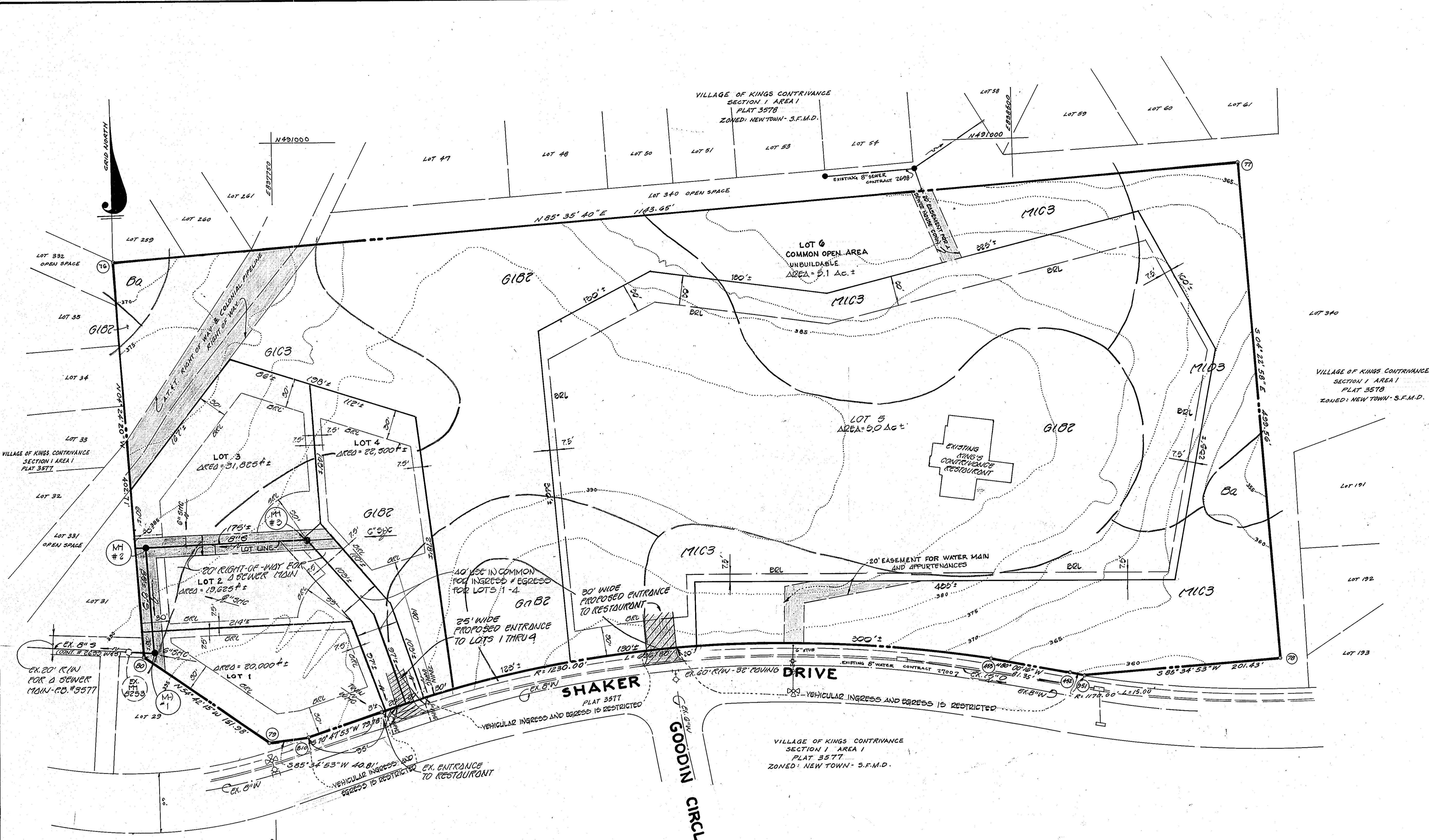


VICINITY MAP
SCALE: 1"=2000'



GENERAL NOTES

1. ZONING: R-12
2. TOTAL AREA: 12.2 ACRES
3. TOTAL NUMBER OF LOTS: 6 (4 RESIDENTIAL)
4. TOTAL AREA OF LOTS: 12.2 ACRES ±
5. TOTAL AREA OF OPEN SPACE (LOT G)... 2.1 ACRES ±
6. TOPOGRAPHY SHOWN HEREON FROM AERIAL MAPS PREPARED BY MAPS, INC.
7. PUBLIC WATER & SEWER TO BE UTILIZED. ALL LOTS TO HAVE INDIVIDUAL WATER SERVICES FROM EXISTING WATER MAIN IN SHAKER DR.
8. COORDINATES SHOWN HEREON ARE BASED ON TRAVERSE STATIONS ESTABLISHED BY MAPS, INC. IN 1965 AND BY PURDUM & JESCHKE IN 1960 AND ARE REFERENCED TO MARYLAND BUREAU OF CONTROL SURVEY MONUMENTS AND TO U.S. COAST & GEODETIC SURVEY MONUMENTS IN THE COLUMBIA AREA.
9. SEDIMENT AND EROSION CONTROL MEASURES TO BE DETERMINED WITH THE SUBMISSION OF SITE DEVELOPMENT DRAWINGS.
10. LOT 5 IS PRESENTLY SERVED BY PUBLIC SEWER FROM CONTRACT # 2090 AND PUBLIC WATER FROM CONTRACT # 2700.
11. FOR DRAINAGE AREA MAP AND STORM WATER MANAGEMENT, SEE VILLAGE OF KING'S CONTRIVANCE, SECTION 1, AREA 1, P. 74-99 C.
12. SEE PAGE NUMBERS 354, 457, 507 & 79-34. SKETCH PLAN 5-79-35 AND YP 81-30.

COORDINATES		
No.	NORTH	EAST
610	490324.29	837782.63
79	490391.15	837741.94
80	490478.96	837617.90
76	490880.48	837562.97
77	490968.33	838727.24
78	490470.24	838745.42
981	490484.72	838564.59
452	490486.18	838556.13
453	490470.30	838476.01

NOTE: COORDINATES SHOWN HEREON ARE BASED ON THE MARYLAND STATE SYSTEM OF COORDINATES.

FISHER, COLLINS AND CARTER, INC.
CONSULTING ENGINEERS & LAND SURVEYORS
6303 COURT AVENUE
ELICOTT CITY, MARYLAND 21043
TELEPHONE: 461-2855



Ronald B. Carter
ARLWLD B. CARTER, M.D. P.L.C. # 10704
4/9/81
DATE

TENTATIVELY APPROVED ON May 12, 1981
DATE
OFFICE OF PLANNING AND ZONING OF
HOWARD COUNTY
James A. Mager
6-16-81
PLANNING DIRECTOR DATE

PRELIMINARY PLAN
MACGILLS COMMON - SECTION 1

6TH ELECTION DISTRICT OF HOWARD COUNTY, MARYLAND - TAX MAP 42 - PARCEL 267

OWNER & DEVELOPER
THE HOWARD RESEARCH & DEVELOPMENT CORP.
10275 LITTLE PATUXENT PARKWAY
COLUMBIA, MARYLAND 21044

DATE: APRIL 9, 1981
REV. JUNE 8, 1981

SCALE: 1"=50'

SHEET 1 of 1