

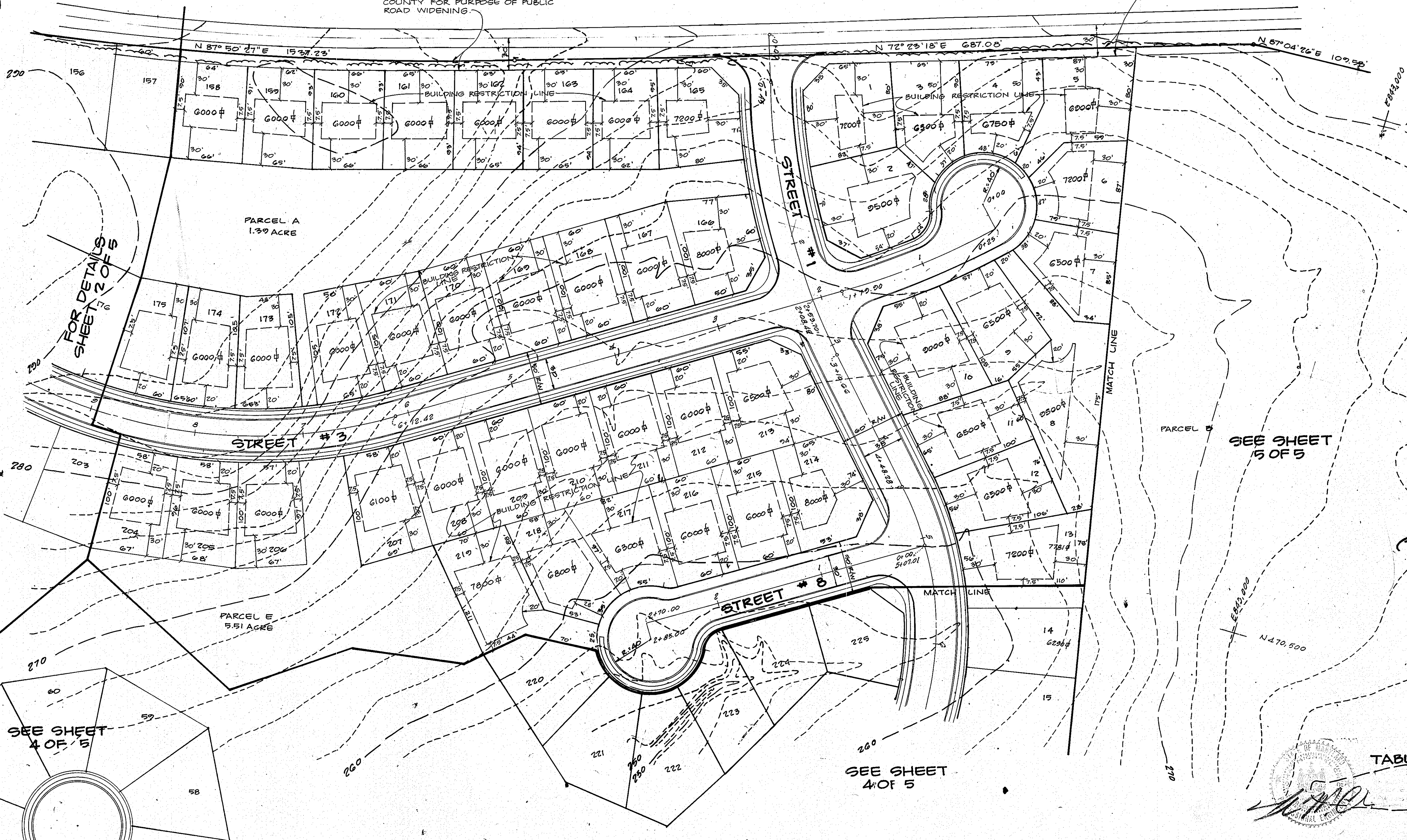
VICINITY MAP  
Scale: 1"=2000'

SCALE: 1"=50'

WHISKEY BOTTOM ROAD

NOTE: AREA TO BE DEDICATED TO HOWARD COUNTY FOR PURPOSE OF PUBLIC ROAD WIDENING.

NOTE: AREA TO BE DEDICATED TO HOWARD COUNTY FOR PURPOSE OF PUBLIC ROAD WIDENING.



GENERAL NOTES:

1. BOUNDARY & TOPOGRAPHY PREPARED BY GREENHORNE & O'MARA INC.
2. TOPOGRAPHY BASED ON W.G.S.C. DATUM.
3. EXISTING CONTOURS INDICATED THUS:  $\cdots$  214
4. PROPOSED CONTOURS INDICATED THUS:  $\cdots$  212
4. CONTOUR INTERVALS - 2'
5. DRAINAGE INDICATED:  $\cdots$
6. MINIMUM LOT SIZE - 6,000 sq. ft.
7. TOTAL NUMBER OF LOTS - 305
8. TOTAL AREA OF SITE - 77.92 ACRES
9. TOTAL AREA OF PUBLIC ROADWAY - 11.8 ACRES
10. TOTAL AREA OF OPEN SPACE - 19.0 ACRES
11. SEE OFFICE OF PLANNING & ZONING FILE 8-70-23.

TENTATIVELY APPROVED ON Dec. 22, 1980

OFFICE OF PLANNING AND ZONING OF  
HOWARD COUNTY  
*Ronald Kennel* 1-8-81  
PLANNING DIRECTOR DATE

TABULATION OF SHEET 1

A. AREA OF LOTS	7.5 AC.
B. AREA OF OPEN SPACE	SEE BELOW
C. AREA OF FLOOD PLAIN	N/A
D. AREA OF RIGHT OF WAY	2.95 AC.
E. NUMBER OF LOTS	47

TABULATION OF SITE

A. TOTAL AREA OF SUBMISSION	91.24
B. TOTAL AREA OF LOTS	40.55 AC.
C. TOTAL AREA OF OPEN SPACE	19.00 AC.
D. TOTAL AREA OF FLOOD PLAIN	0.98 AC.
E. TOTAL AREA OF RIGHT OF WAY	14.63 AC.
F. TOTAL NUMBER OF LOT	305

TABULATION OPEN SPACE

PARCEL A	1.39
PARCEL C	2.47
PARCEL D	5.21
PARCEL E	5.51
TOTAL	14.58

NOTE: ALL LOT AREAS ARE APPROXIMATE & ALL LOT DIMENSIONS ARE SCALED.

No.	REVISION	DATE	BY



**GREENHORNE & O'MARA, INC.**  
ENGINEERS • ARCHITECTS • PLANNERS • SURVEYORS  
622 HUNGERFORD DRIVE, SUITE 20, ROCKVILLE, MD.  
(301) 762 - 5340 20850  
RIVERDALE, MD. • ANNAPOLIS, MD. • FAIRFAX, VA. • NO. HUNTINGDON, PA.

PRELIMINARY PLAN  
**BRIARWOOD**  
ELECTION DISTRICT 6 TAX MAP 47, PARCEL 163  
HOWARD COUNTY, MARYLAND

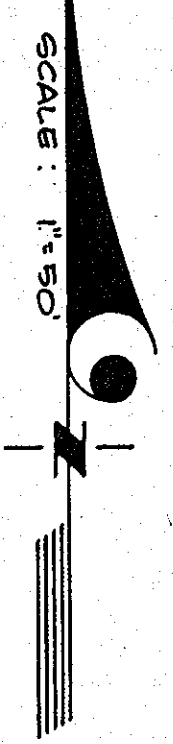
S.H.P. DESIGN	SCALE 1"=50'
EG DRAWN	OF 5
T.M.C. CHECKED	SHEET
DATE 10/19/80	FILE No.
DATE	JOB No.
	FILE No.



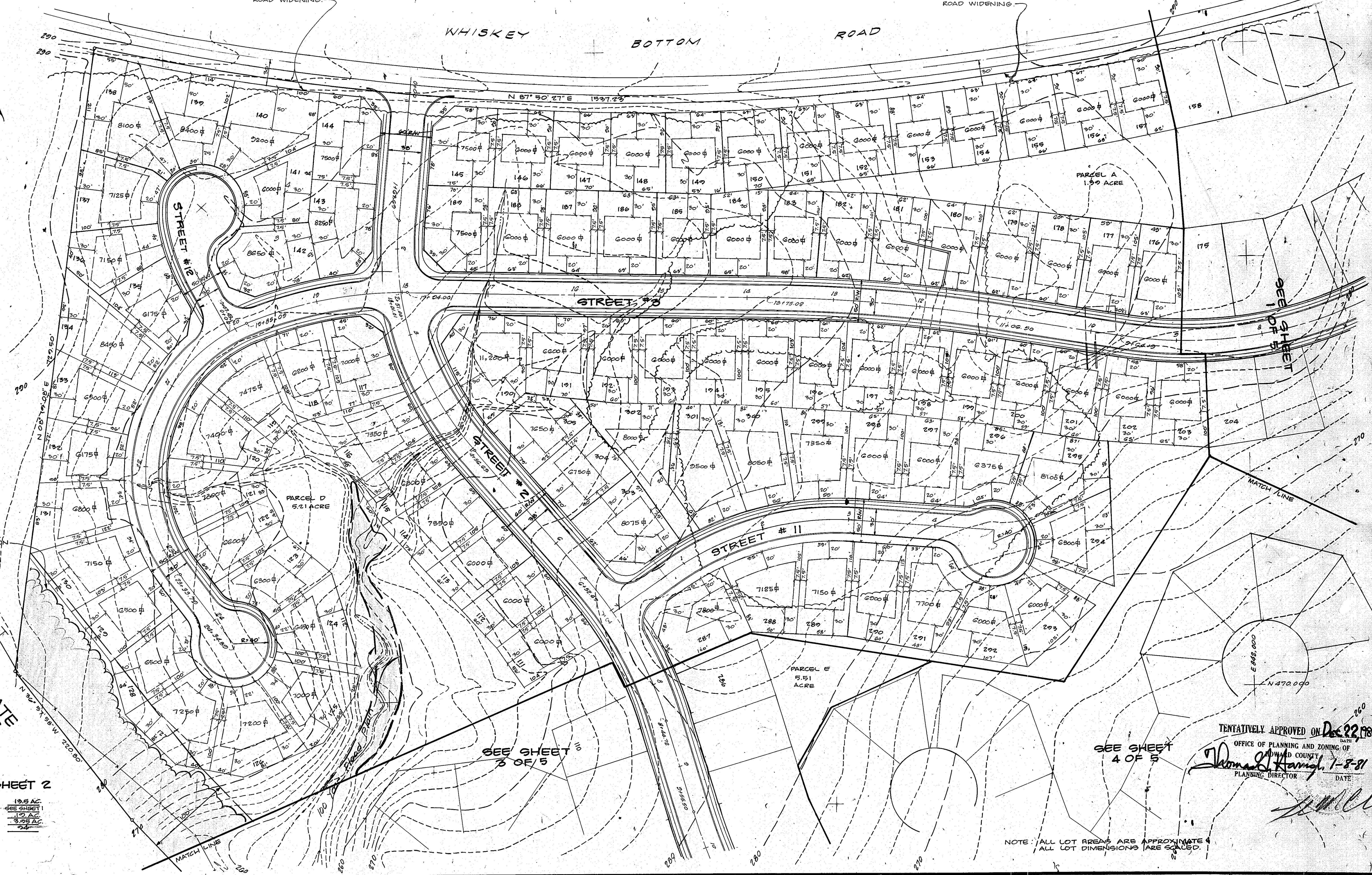
NOTE: AREA TO BE DEDICATED TO HOWARD COUNTY FOR PURPOSE OF PUBLIC ROAD WIDENING.

NOTE: AREA TO BE DEDICATED TO HOWARD COUNTY FOR PURPOSE OF PUBLIC ROAD WIDENING.

WHISKEY BOTTOM ROAD



SCALE: 1"=50'



NATURAL LANDSCAPE BUFFER RESERVATION ON EX. VEGETATION

MD STATE RTE. #216

TABULATION OF SHEET 2

- A. AREA OF LOTS 19.5 AC
- B. AREA OF OPEN SPACES 12.0 AC
- C. AREA OF FLOOD FLAIN 12.0 AC
- D. AREA OF RIGHT OF WAY 3.25 AC
- E. NUMBER OF LOTS 24

SEE SHEET 3 OF 5

SEE SHEET 4 OF 5

TENTATIVELY APPROVED ON Dec 22, 1980

OFFICE OF PLANNING AND ZONING OF HOWARD COUNTY  
 Planning Director  
 DATE: 1-8-81

NOTE: ALL LOT AREAS ARE APPROXIMATE  
 ALL LOT DIMENSIONS ARE SCALED.

No.	REVISION	DATE	BY
1	100-Yr. Flood Plain Boundary Added	11-17-80	DDR



**GREENHORNE & O'MARA, INC.**  
 ENGINEERS • ARCHITECTS • PLANNERS • SURVEYORS  
 622 HUNGERFORD DRIVE, SUITE 20, ROCKVILLE, MD.  
 (301) 762 - 5340 20850  
 RIVERDALE, MD. • ANNAPOLIS, MD. • FAIRFAX, VA. • NO. HUNTINGDON, PA.

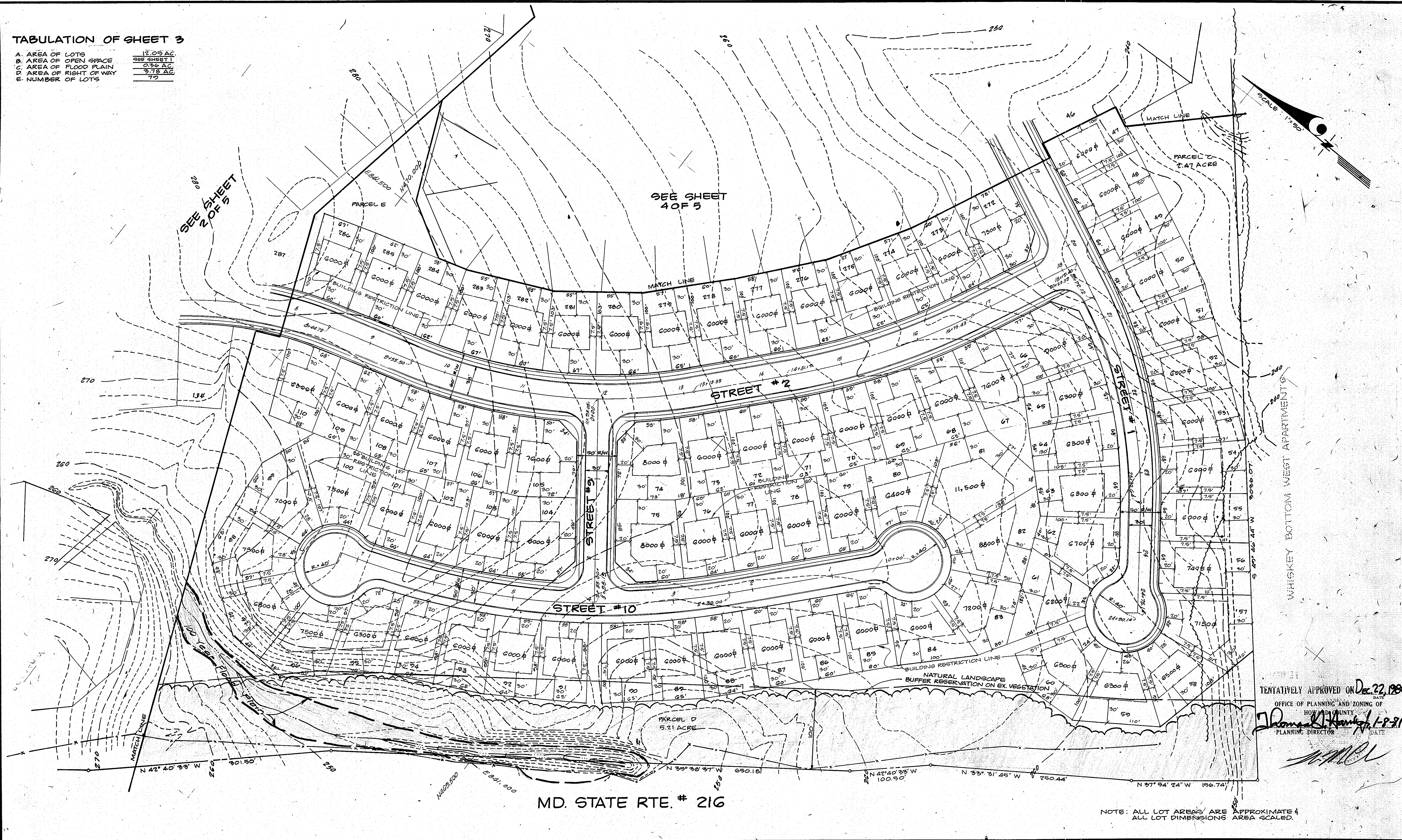
**PRELIMINARY PLAN**  
**BRIARWOOD**  
 ELECTION DISTRICT 6 TAX MAP 47 PARCEL 163  
 HOWARD COUNTY, MARYLAND

S.H.P. DESIGN	SCALE 1"=50'
EG DRAWN	2 OF 5
T.M.C. CHECKED	SHEET
DATE OCT. 1980	R-294-X
JOB No.	FILE No.

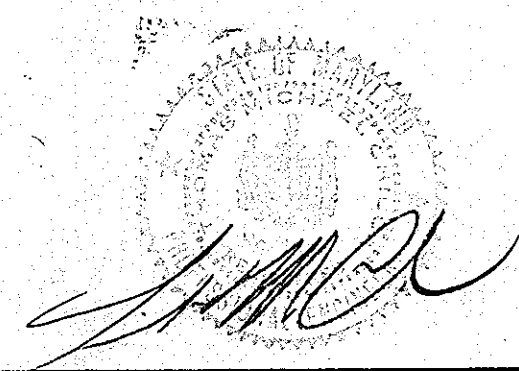


**TABULATION OF SHEET 3**

A. AREA OF LOTS	17.05 AC.
B. AREA OF OPEN SPACE	388 SHEET 1
C. AREA OF FLOOD PLAIN	0.36 AC.
D. AREA OF RIGHT OF WAY	37.18 AC.
E. NUMBER OF LOTS	70



TENTATIVELY APPROVED ON Dec. 22, 1980  
 DATE  
 OFFICE OF PLANNING AND ZONING OF  
 HOWARD COUNTY  
 Planning Director  
 DATE



No.	REVISION	DATE	BY
1	100-yr. Flood Plain Boundary Added	11-13-80	DDR



**GREENHORNE & O'MARA, INC.**  
 ENGINEERS • ARCHITECTS • PLANNERS • SURVEYORS  
 622 HUNGERFORD DRIVE, SUITE 20, ROCKVILLE, MD.  
 (301) 762 - 5340 20850  
 RIVERDALE, MD. • ANNAPOLIS, MD. • FAIRFAX, VA. • NO. HUNTINGDON, PA.

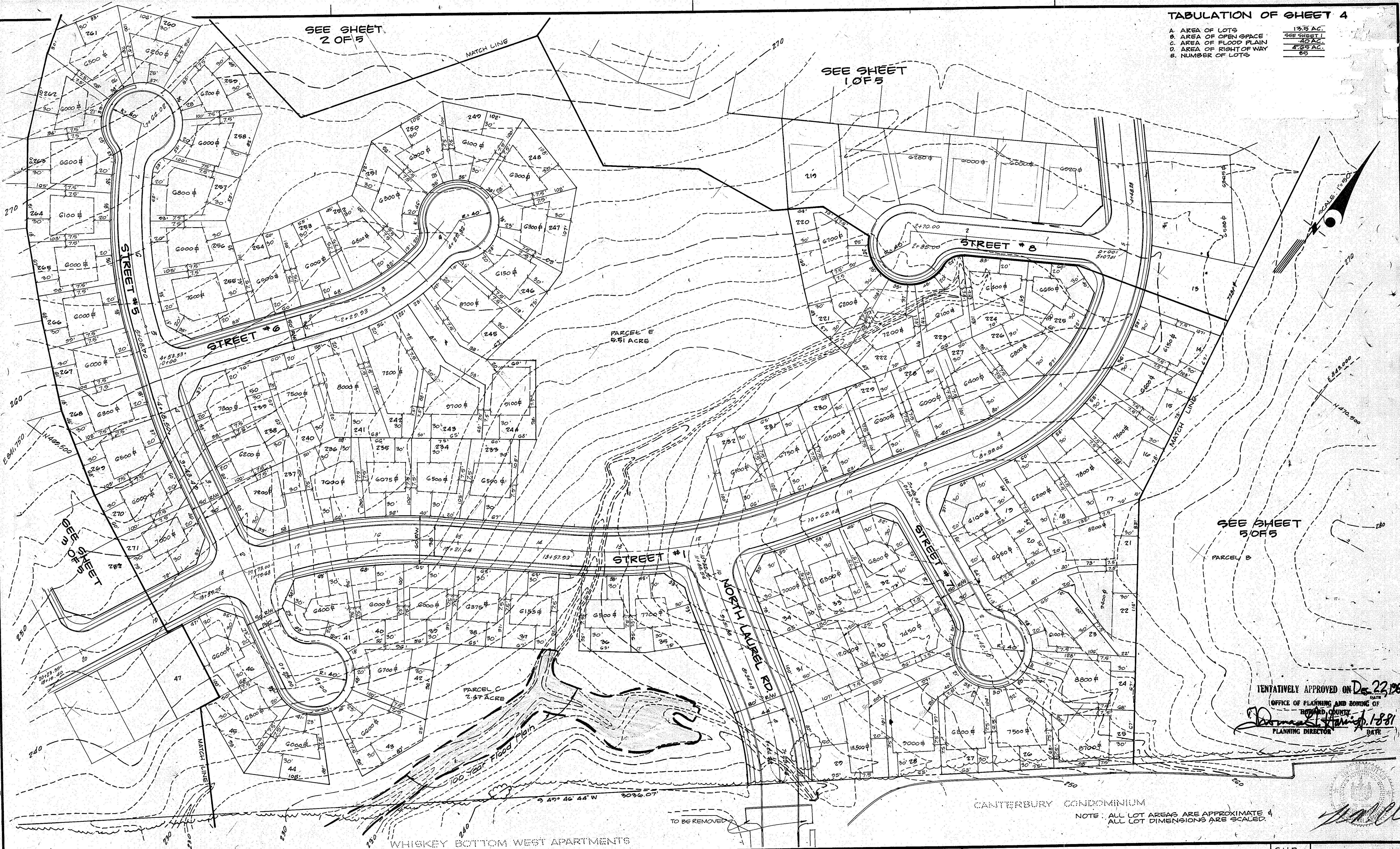
**PRELIMINARY PLAN**  
**BRIARWOOD**  
 ELECTION DISTRICT 6 TAX MAP 47 PARCE 165  
 HOWARD COUNTY, MARYLAND

S.H.P. DESIGN	SCALE 1"=50'
EG DRAWN	3 OF 5
T.M.C. CHECKED	SHEET
DATE	FILE No.



TABULATION OF SHEET 4

A. AREA OF LOTS	13.5 AC.
B. AREA OF OPEN SPACE	SEE SHEET 1
C. AREA OF FLOOD PLAIN	40 AC.
D. AREA OF RIGHT OF WAY	4.65 AC.
E. NUMBER OF LOTS	89



TENTATIVELY APPROVED ON Dec. 22, 1980  
 OFFICE OF PLANNING AND ZONING OF  
 HOWARD COUNTY  
*[Signature]*  
 PLANNING DIRECTOR DATE

NOTE: ALL LOT AREAS ARE APPROXIMATE &  
 ALL LOT DIMENSIONS ARE SCALED.

No.	REVISION	DATE	BY
1	100-Yr. Flood Plain Boundary Added	11-13-80	DDR



**GREENHORNE & O'MARA, INC.**  
 ENGINEERS • ARCHITECTS • PLANNERS • SURVEYORS  
 622 HUNGERFORD DRIVE, SUITE 20, ROCKVILLE, MD.  
 (301) 762 - 5340 20850  
 RIVERDALE, MD. • ANNAPOLIS, MD. • FAIRFAX, VA. • NO. HUNTINGDON, PA.

**PRELIMINARY PLAN**  
**BRIARWOOD**  
 ELECTION DISTRICT 6 TAX MAP 47 PARCEL 165  
 HOWARD COUNTY, MARYLAND

S.H.P. DESIGN	SCALE	1" = 50'
EG DRAWN		4 OF 5
T.M.C. CHECKED	SHEET	
OCT. 1980 DATE	R-294-X	FILE No.
	JOB No.	FILE No.





NOTE: AREA TO BE DEDICATED TO HOWARD COUNTY FOR PUBLIC ROAD WIDENING.

PARCEL 750

PARCEL 830

S 68° 34' 04" E 1000.22

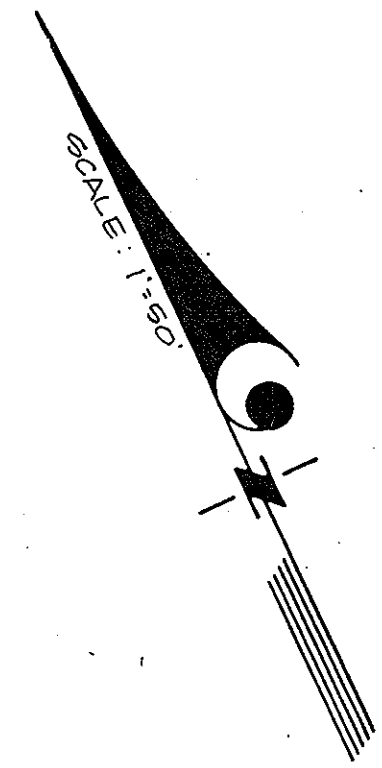
N 87° 04' 26" E 102.58

N 47° 09' 00" E 60.58

N 47° 09' 00" E 60.58

N 47° 09' 00" E 60.58

S 70° 16' 44" W 3028.07  
CANTERBURY CONDOMINIUM



SEE SHEET 1 OF 5

SEE SHEET 4 OF 5



TENTATIVELY APPROVED ON Dec 22, 1980  
DATE  
OFFICE OF PLANNING AND ZONING OF  
HOWARD COUNTY  
*Donald H. King*  
PLANNING DIRECTOR  
DATE

No.	REVISION	DATE	BY



**GREENHORNE & O'MARA, INC.**  
ENGINEERS • ARCHITECTS • PLANNERS • SURVEYORS  
622 HUNGERFORD DRIVE, SUITE 20, ROCKVILLE, MD.  
(301) 762 - 5340 20850  
RIVERDALE, MD. • ANNAPOLIS, MD. • FAIRFAX, VA. • NO. HUNTINGDON, PA.

PRELIMINARY PLAN  
**BRIARWOOD**  
ELECTION DISTRICT 6 TAX MAP 47, PARCEL 163  
HOWARD COUNTY, MARYLAND

S.H.P. DESIGN	SCALE 1" = 50'
R.K.M. DRAWN	5 OF 5
T.M.C. CHECKED	SHEET
12-9-80 DATE	JOB No. R-294-X FILE No.