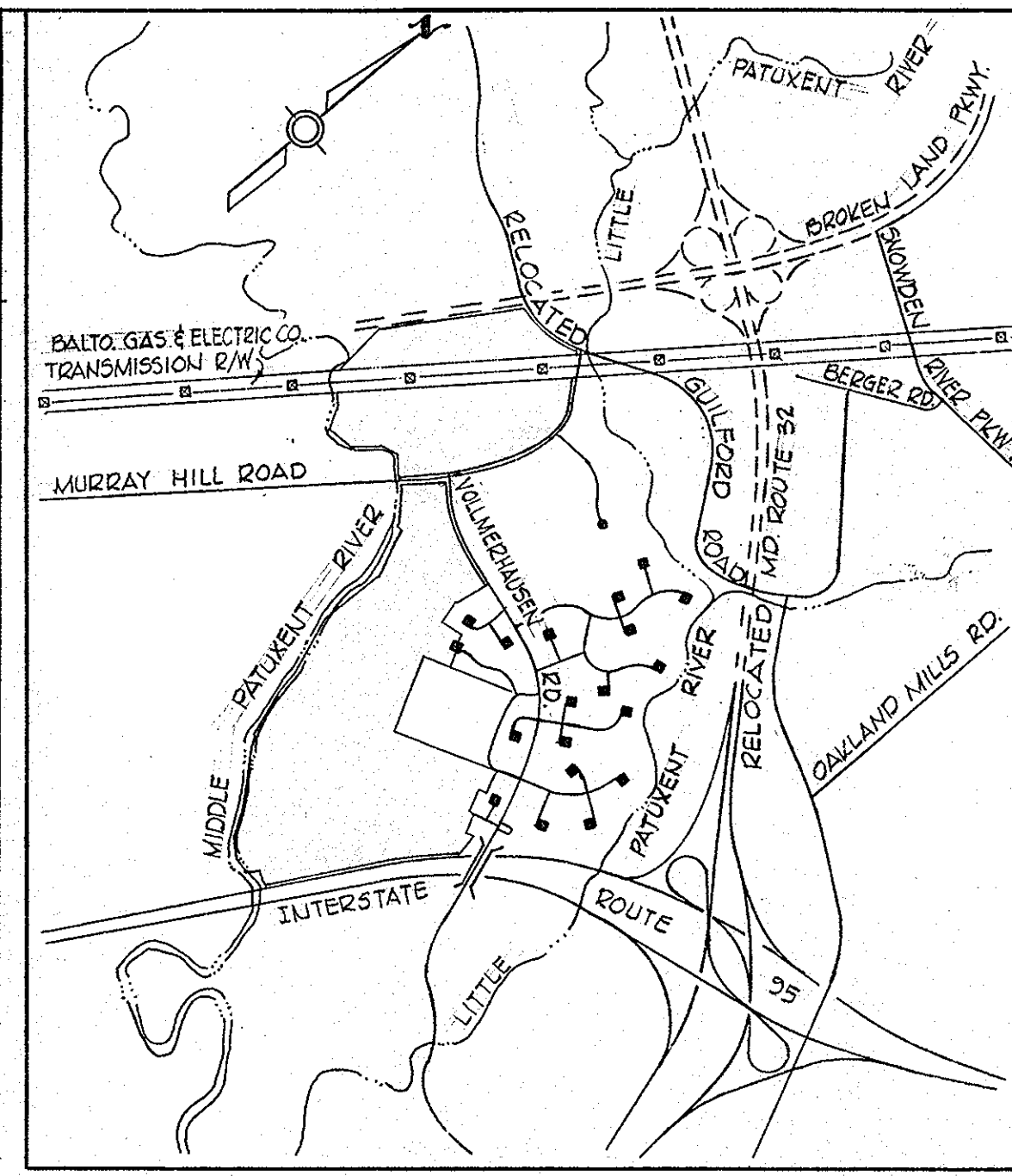


**LOT AND AREA DATA**

- Total Number of Lots (Including Open Space and Parcels) 205  
 S.F.M.D. Lots 20  
 S.F.L.D. Lots 177  
 Multi-Family Parcels 4  
 Open Space Lots 4
- Total Area 287.70 AC.  
 Area of Roads 10.12 AC.  
 Area of S.F.M.D. Lots 5.58 AC.  
 Area of S.F.L.D. Lots 76.87 AC.  
 Area of Multi-Family Parcels 43.19 AC.  
 Area of Open Space Lots 151.94 AC.
- Lot and Parcel Breakdown  
 Less than 3,000 \$ 0  
 Greater than 3,000 \$ 205

**MIDDLE PATUXENT RIVER APPROXIMATE 100 YEAR FLOOD PLAIN ELEVATIONS**

Section	Channel Elevation	Normal Water Depth in Feet	Flood Depth in Feet	Flood Elevation
A-A	219.5	1.5	16.5	237.5
B-B	218.3	1.5	16.5	236.3
C-C	217.2	1.5	16.5	235.2
D-D	216.5	1.5	16.5	234.5
E-E	216.1	1.5	16.5	234.1
F-F	215.2	1.5	16.5	233.2
G-G	214.7	1.5	16.5	232.7
H-H	214.3	1.5	16.5	232.3
I-I	213.8	1.5	16.5	231.8
J-J	213.4	1.5	16.5	231.4
K-K	212.7	1.5	16.5	230.7
L-L	212.3	1.5	16.5	230.3
M-M	211.8	1.5	16.5	229.8
N-N	211.5	1.5	16.5	229.5
O-O	211.1	1.5	16.5	229.1



**VICINITY MAP**  
SCALE: 1" = 2,000'

\* Field-Run  
 \*\* U.S.G.S. Approximate Flood Depth Determination Method. See letter to D.P.W. from Whitman, Requardt and Associates, dated 10/24/79.



**GENERAL NOTES**

- Zoning - New Town (Single Family Low Density, Single Family Medium Density, Multi-Family and Open Space).
- Topography taken from aerial topo, prepared by Maps, Incorporated.
- Public water and sewer systems to be made available and utilized.
- All building restriction lines shall be in accordance with Final Development Plan Phase 169-Part II
- All street R/W's are 50' wide except as noted.
- The lots or parcels shown on these plans are subject to the supplement sewer in-aid-of construction charge created by Section 20.311A of the Howard County Code, and the Executive Order No. 72-9.
- All sidewalks shall be 4' wide.
- Standard Symbols:
 

Proposed Headwalls	Proposed Pipes	Proposed Concrete Sidewalks
Proposed Inlets	Proposed Concrete Sidewalks	Major Open Space Pathway System
Proposed Manholes		
Riprap (20' minimum)		
- See Office of Planning and Zoning Files 5-77-32C and P-76-17.

**SPECIAL NOTES**

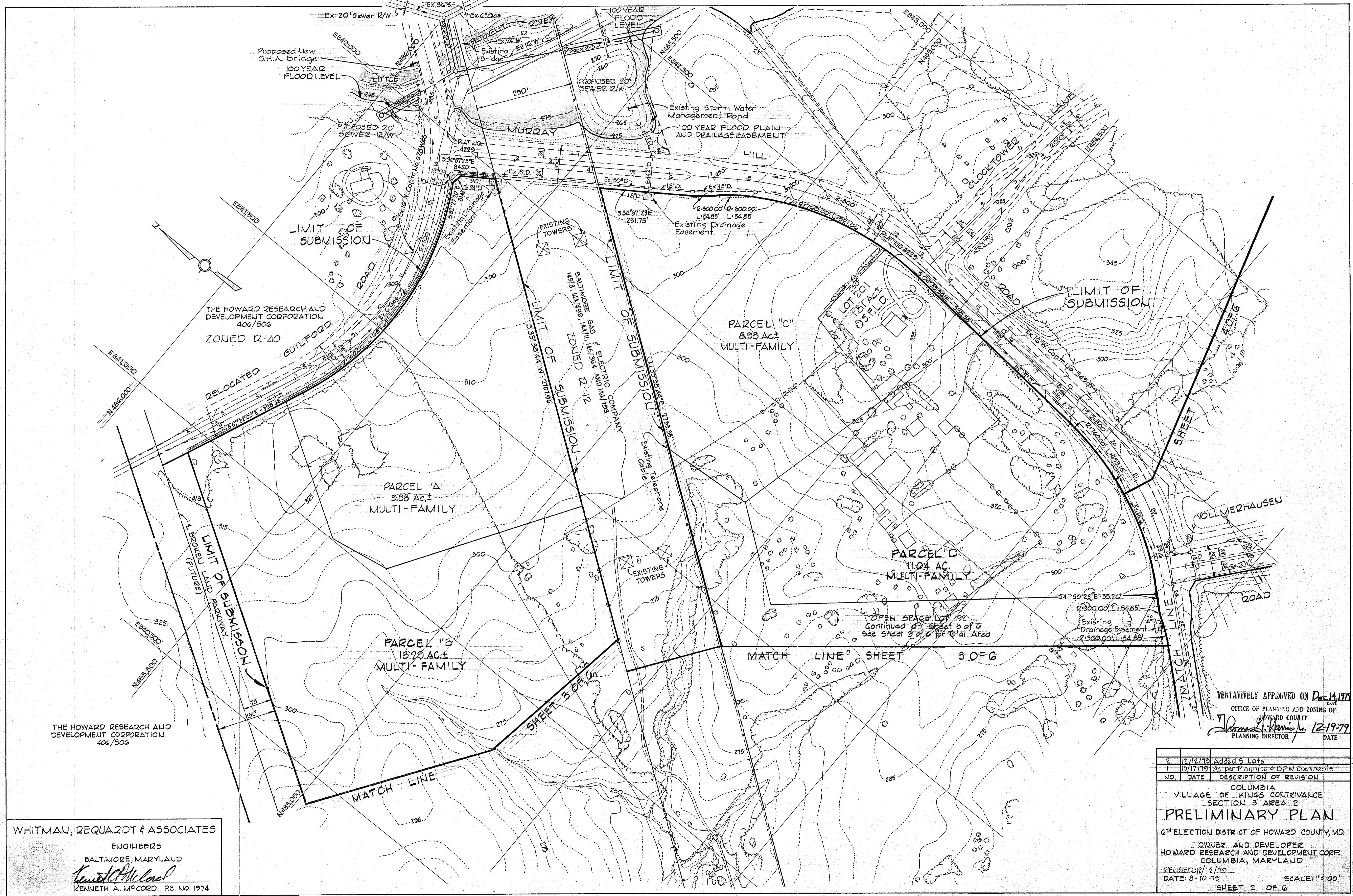
- The major open space pathway system shown hereon is schematic only and subject to final design by the Columbia Association.
- All drainage easements shown are subject to location based on Final and Site Development Plan Design.

TENTATIVELY APPROVED ON Dec. 14, 1979  
 OFFICE OF PLANNING AND ZONING OF HOWARD COUNTY  
*James A. McCoy*  
 PLANNING DIRECTOR

2	12/12/79	Added 5 Lots
1	10/17/79	As per Planning & D.P.W. Comments
NO.	DATE	DESCRIPTION OF REVISION
COLUMBIA VILLAGE OF KINGS CONTRIVANCE SECTION 3 AREA 2 <b>PRELIMINARY PLAN</b> 6 <sup>TH</sup> ELECTION DISTRICT OF HOWARD COUNTY, MD. OWNER AND DEVELOPER HOWARD RESEARCH AND DEVELOPMENT CORP COLUMBIA, MARYLAND REVISED: 12/12/79 DATE: 8-10-79 SCALE: AS SHOWN SHEET 1 OF 6		

WHITMAN, REQUARDT & ASSOCIATES  
 ENGINEERS  
 BALTIMORE, MARYLAND  
*Kenneth A. McCord*  
 KENNETH A. McCORD P.E. NO. 1974

**INDEX MAP**  
Scale: 1" = 400'



WHITMAN, REQUARDT & ASSOCIATES  
 ENGINEERS  
 BALTIMORE, MARYLAND  
*Kenneth A. McCord*  
 KENNETH A. MCCORD RE. NO. 1974

REVISIONS:  
 2 - 12/12/79 Added 5 Lots  
 1 - 10/17/79 As per Planning & DPW Comments

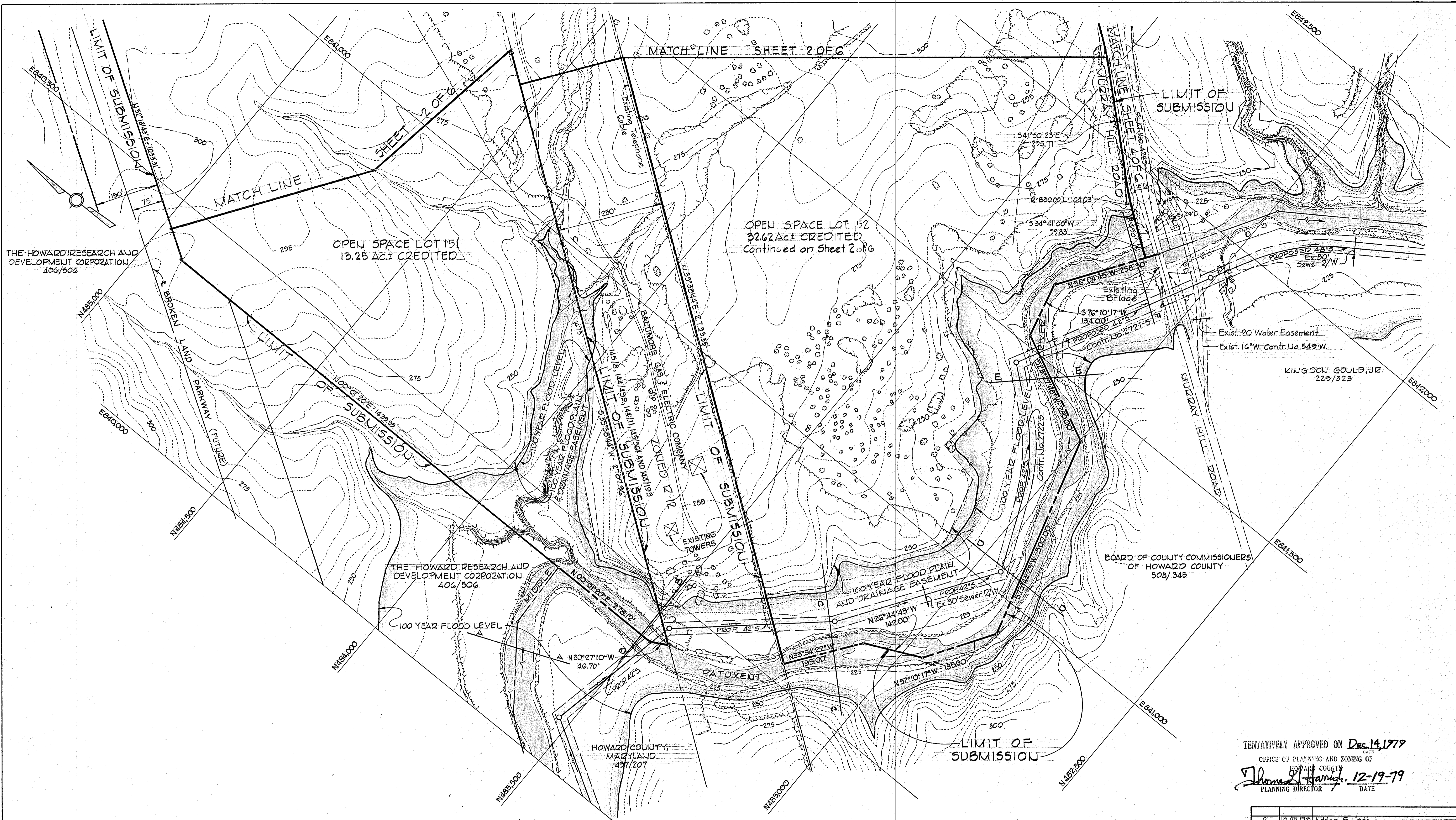
NO. DATE DESCRIPTION OF REVISION

PLANNING DIRECTOR  
 DATE

REVISOR: 2/12/79  
 DATE: 8-10-79

SCALE: 1"=100'

SHEET 2 OF 6



THE HOWARD RESEARCH AND DEVELOPMENT CORPORATION  
406/506

OPEN SPACE LOT 151  
13.25 AC.± CREDITED

OPEN SPACE LOT 152  
32.62 AC.± CREDITED  
Continued on Sheet 2 of 6

THE HOWARD RESEARCH AND DEVELOPMENT CORPORATION  
406/506

BOARD OF COUNTY COMMISSIONERS  
OF HOWARD COUNTY  
503/345

KINGDON GOULD, JR.  
229/323

HOWARD COUNTY,  
MARYLAND  
497/207

TEMPORARILY APPROVED ON Dec. 14, 1979  
DATE  
OFFICE OF PLANNING AND ZONING OF  
HOWARD COUNTY  
*Thomas L. Hamrick* 12-19-79  
PLANNING DIRECTOR DATE

2	12/12/79	Added 5 Lots
1	10/17/79	As per Planning & D.P.W. comments
NO.	DATE	DESCRIPTION OF REVISION
COLUMBIA VILLAGE OF KINGS CONTRIVANCE SECTION 3 AREA 2		
<b>PRELIMINARY PLAN</b>		
6 <sup>TH</sup> ELECTION DISTRICT OF HOWARD COUNTY, MD.		
OWNER AND DEVELOPER HOWARD RESEARCH AND DEVELOPMENT CORP. COLUMBIA, MARYLAND		
REVISED: 12/12/79		
DATE: 8-10-79		SCALE: 1"=100'
SHEET 3 OF 6		

WHITMAN, REQUARDT & ASSOCIATES  
ENGINEERS  
BALTIMORE, MARYLAND  
*Kenneth A. McCord*  
KENNETH A. McCORD PE NO. 1974



OPEN SPACE LOT 153  
Continued on Sheets 5 and 6  
See Sheet 6 for Total Area

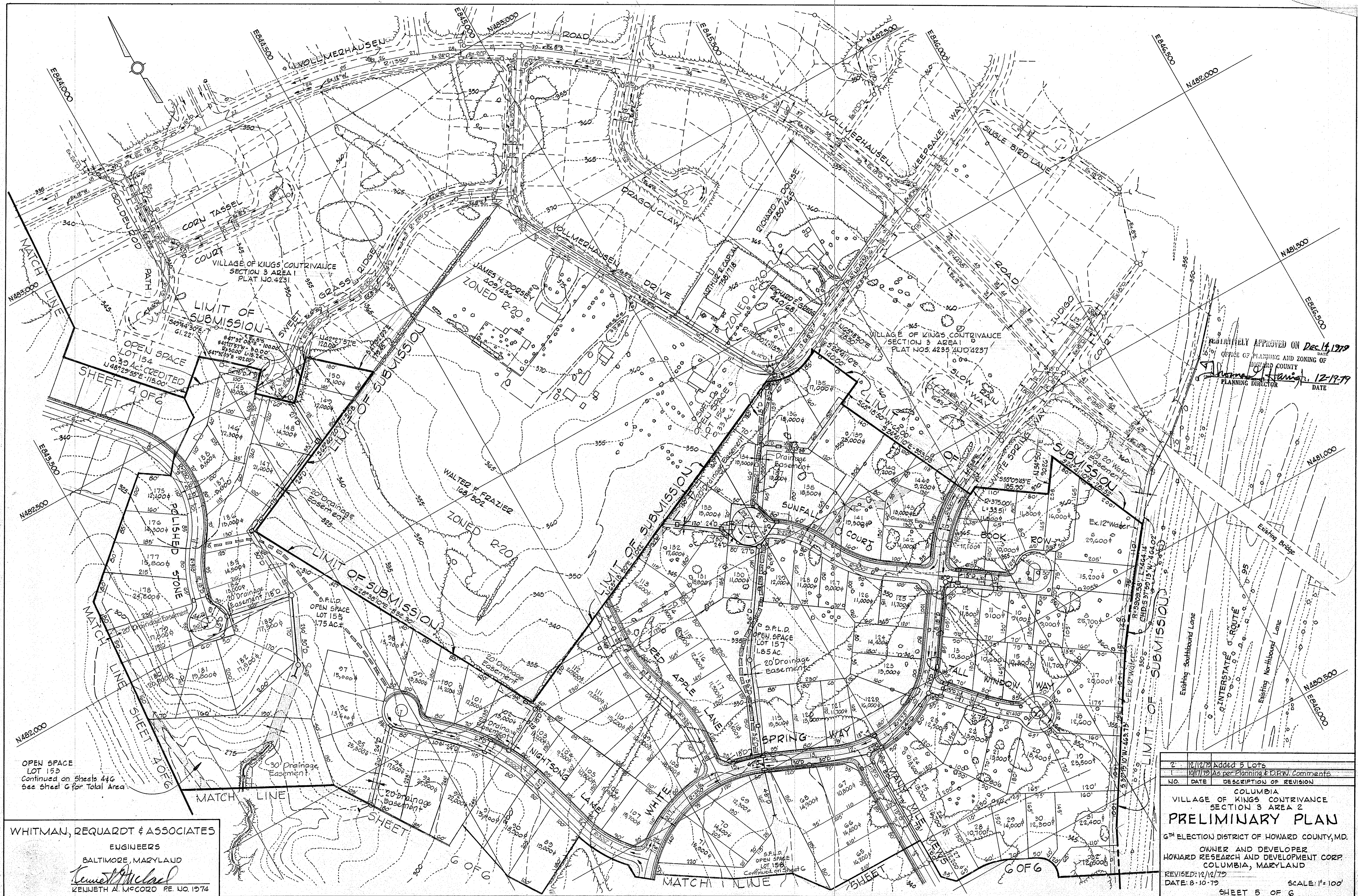
TEMPORARILY APPROVED ON Dec. 14, 1979  
OFFICE OF PLANNING AND ZONING OF  
HOWARD COUNTY  
PLANNING DIRECTOR: *[Signature]* DATE: 12-19-79

NO.	DATE	DESCRIPTION OF REVISION
2	12/12/79	Added 5 Lots
1	10/17/79	As per Planning & D.P.W. comments

COLUMBIA  
SECTION 3 AREA 2  
**PRELIMINARY PLAN**  
6<sup>TH</sup> ELECTION DISTRICT OF HOWARD COUNTY, MD.  
OWNER AND DEVELOPER  
HOWARD RESEARCH AND DEVELOPMENT CORP.  
COLUMBIA, MARYLAND  
REVISED: 12/12/79  
DATE: 8-10-79  
SCALE: 1"=100'  
SHEET 4 OF 6

WHITMAN, REQUARDT & ASSOCIATES  
ENGINEERS  
BALTIMORE, MARYLAND  
*Kenneth A. McCord*  
KENNETH A. McCORD PE NO. 1974

KINGDON GOULD, JR.  
229/323

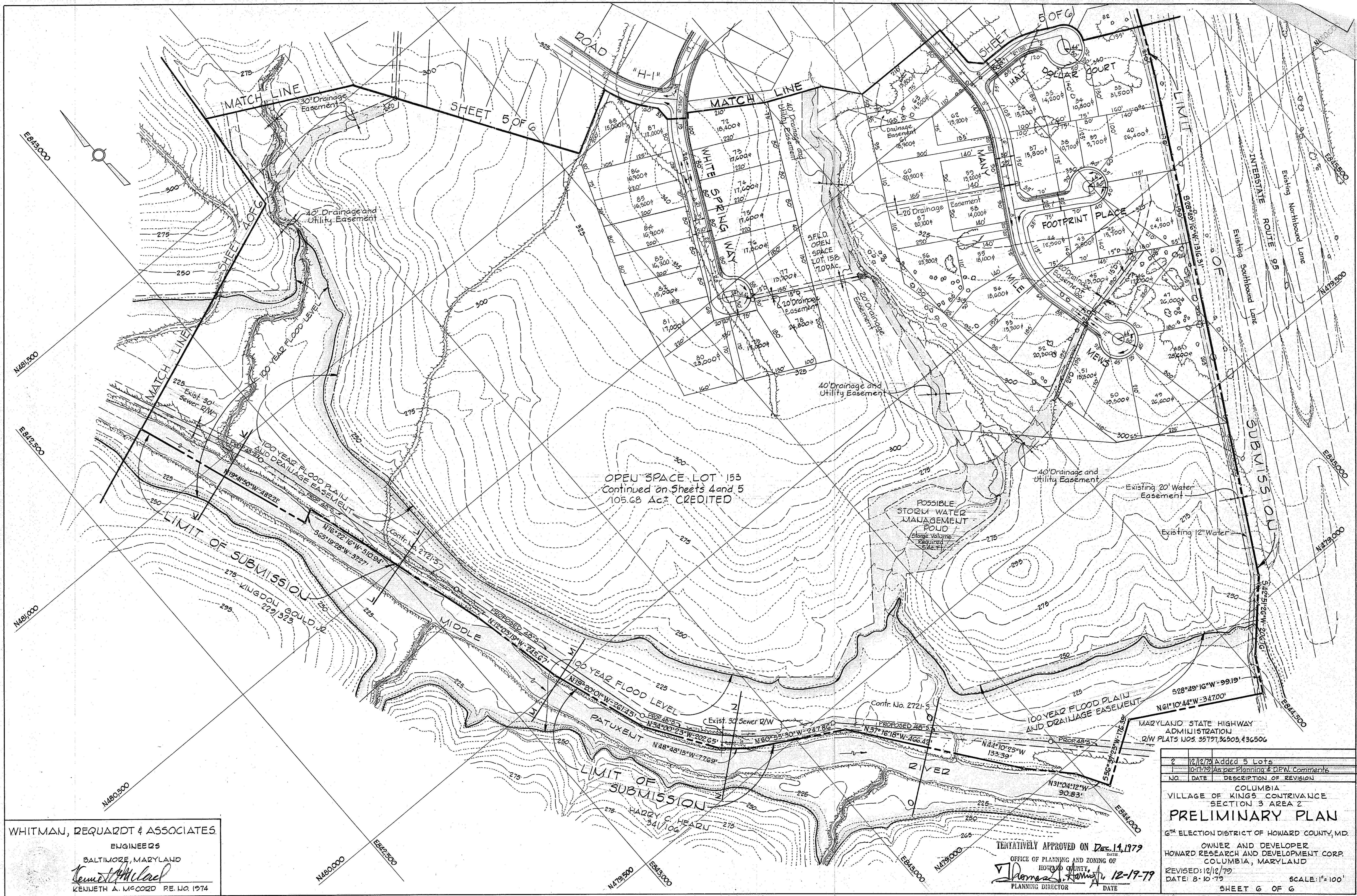


RELATIVELY APPROVED ON Dec. 14, 1979  
 OFFICE OF PLANNING AND ZONING OF  
 HOWARD COUNTY  
 PLANNING DIRECTOR James O. Fleming, 12-19-79  
 DATE

OPEN SPACE  
 LOT 153  
 Continued on Sheets 4 & 6  
 See Sheet 6 for Total Area

WHITMAN, REQUARDT & ASSOCIATES  
 ENGINEERS  
 BALTIMORE, MARYLAND  
*Kenneth A. McCord*  
 KENNETH A. MCCORD P.E. NO. 1974

2	12/12/79	Added 5 Lots
1	10/17/79	As per Planning & DRW. Comments
NO.	DATE	DESCRIPTION OF REVISION
COLUMBIA VILLAGE OF KINGS CONTRIVANCE SECTION 3 AREA 2 <b>PRELIMINARY PLAN</b> 6 <sup>TH</sup> ELECTION DISTRICT OF HOWARD COUNTY, MD. OWNER AND DEVELOPER HOWARD RESEARCH AND DEVELOPMENT CORP. COLUMBIA, MARYLAND REVISED: 12/12/79 DATE: 8-10-79 SCALE: 1" = 100' SHEET 5 OF 6		



OPEN SPACE LOT 153  
Continued on Sheets 4 and 5  
105.68 Ac± CREDITED

WHITMAN, REQUARDT & ASSOCIATES  
ENGINEERS  
BALTIMORE, MARYLAND  
*Kenneth A. McCord*  
KENNETH A. MCCORD RE. NO. 1974

2	12/12/79	Added 5 Lots
1	10-17-79	As per Planning & Z.P.W. Comments
NO.	DATE	DESCRIPTION OF REVISION
COLUMBIA VILLAGE OF KING'S CONTRIVANCE SECTION 3 AREA 2		
<b>PRELIMINARY PLAN</b>		
6TH ELECTION DISTRICT OF HOWARD COUNTY, MD.		
OWNER AND DEVELOPER HOWARD RESEARCH AND DEVELOPMENT CORP. COLUMBIA, MARYLAND		
REVISED: 12/12/79		
DATE: 8-10-79		SCALE: 1" = 100'
PLANNING DIRECTOR		DATE
SHEET G OF G		

TENTATIVELY APPROVED ON Dec. 14, 1979  
DATE  
OFFICE OF PLANNING AND ZONING OF  
HOWARD COUNTY,  
*Thomas J. Hanning* 12-19-79  
PLANNING DIRECTOR DATE