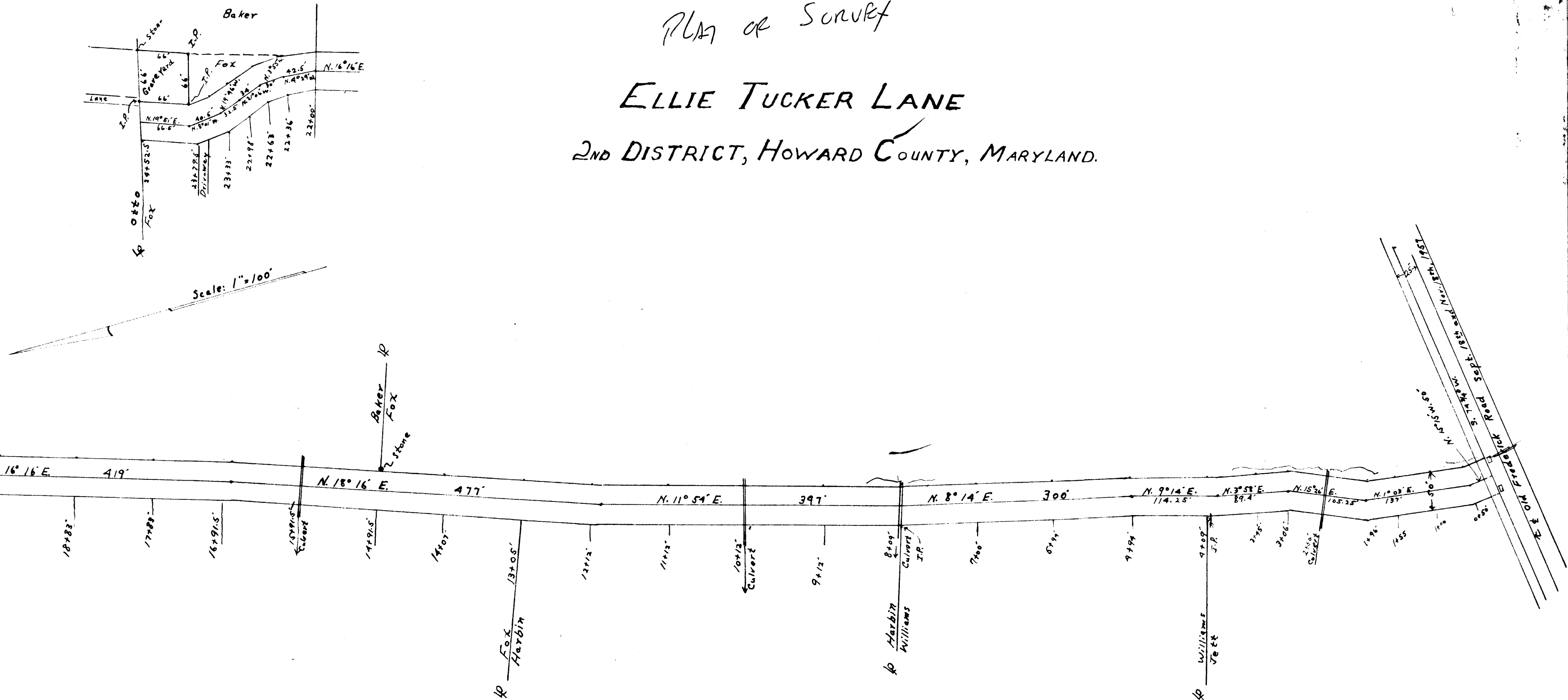


PLAN OF SURVEY
ELLIE TUCKER LANE
 2ND DISTRICT, HOWARD COUNTY, MARYLAND.



Easement Areas

Baker	11,250 ft ²
Fox	2.4 Ac ±
Harbin	8,000 ft ²
Jetts	5,020 ft ²
Williams	3,400 ft ²

I hereby certify that I have surveyed the road shown hereon and the monuments, and Iron pipes are in place as shown and Station stakes have been set.
 November 20, 1957.

J. Harry Koller
 J. Harry Koller, L. S. #250

328

HOWARD COUNTY, MARYLAND DEPARTMENT OF PUBLIC WORKS APPROVED: _____ DATE _____ For Compliance with Howard County, Md. Road Construction Code. By _____ H. C. P. W. FILE No. _____	HOWARD COUNTY PLANNING COMMISSION HOWARD COUNTY, MARYLAND APPROVED: _____ DATE _____ Chairman _____ Director _____ H. C. P. C. File No. _____
----------------------------------------------------------------------------------------------------------------------------------------------------------------------------------------------------	-----------------------------------------------------------------------------------------------------------------------------------------------------------

J. Harry Koller
 Reg. Land Surveyor
 Sykesville,
 Maryland **EL**

PS-046