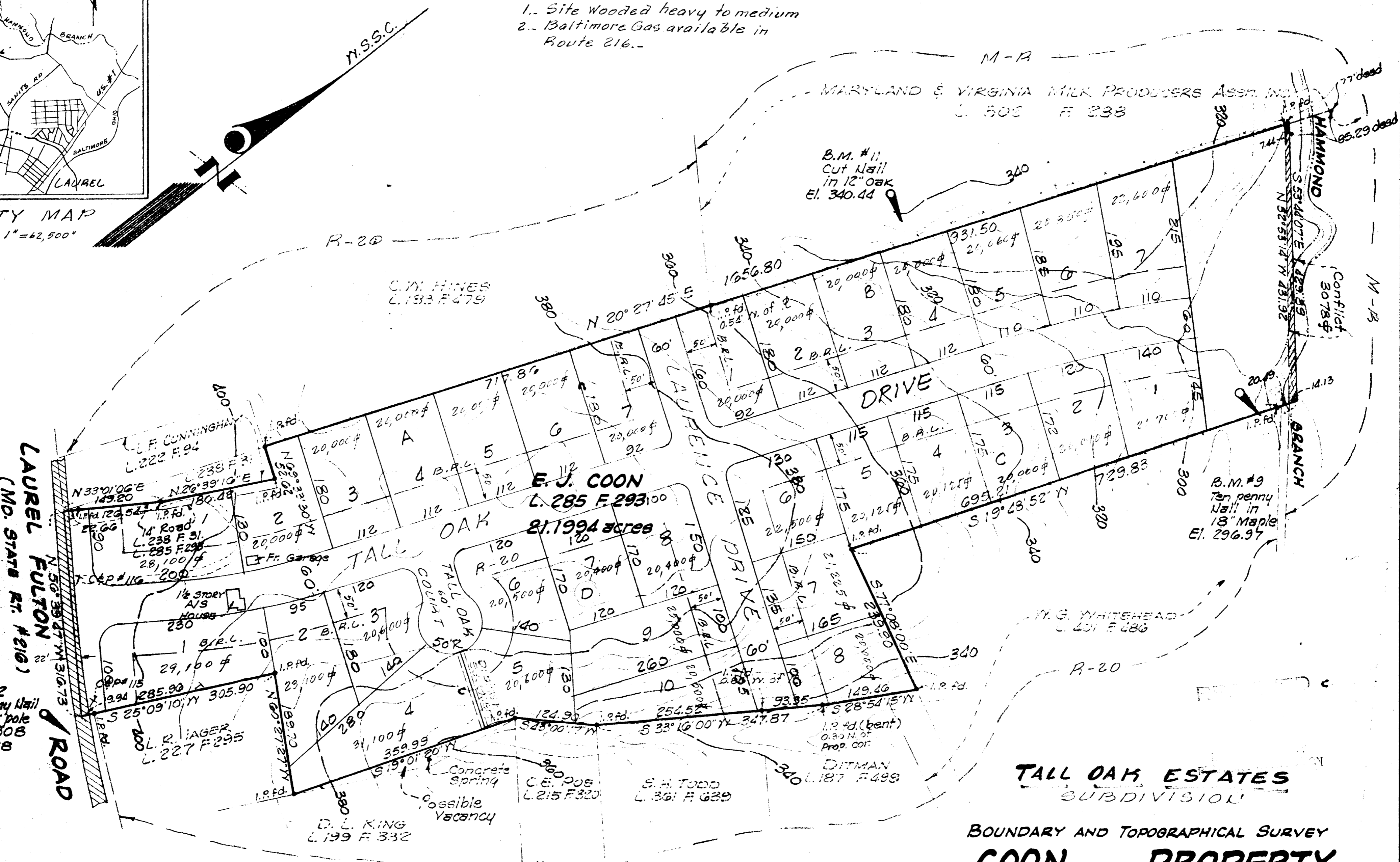


VICINITY MAP  
SCALE: 1" = 62,500'

NOTES:

1. Site wooded heavy to medium
2. Baltimore Gas available in Route 216.



ENGINEER'S CERTIFICATE

I hereby certify that I have carefully surveyed the property shown and described herein, in accordance with record description, and have located all of the existing improvements thereon by a transit-tape, and that corners have been found or placed as shown, and that there are no encroachments either way across the property except as indicated.

26 September 1964

*Clinton G. Light, Jr.*  
CLINTON G. LIGHT, JR.  
P.E. & L.S. MD. # 715

35 LOTS  
Minimum Lot size 20,000 sq ft  
Minimum width at B.R.L. 100'

OWNER:  
HAMMOND DEVELOPER INC.  
308 MAIN STREET  
LAUREL, MD.  
776-7480

BOUNDARY AND TOPOGRAPHICAL SURVEY

COON PROPERTY

GUILFORD DISTRICT  
HOYARD COUNTY  
MARYLAND

Scale: 1" = 100'

September 1964

PARKWAY SURVEYS  
6219 Baltimore Avenue  
Riverdale, Maryland  
UN 4-7458

TA

MS 747

PS-001.001

# 360

HARDING ROAD  
(STANFIELD ROAD)

LEIZERS ROAD

LAUREL  
FULTON  
(MD STATE ROUTE #216)

CONCENTRATING TIME - T.C.  
T.C. =  $5 + \frac{L - 1.0}{5.4}$  (min.)

A = 0.3 ac.  
TC = 5.0  
I = 6.80  
C = 0.4  
Q = 0.84 cfs.  
Df = 0.45'

A = 0.6 ac.  
TC = 5.0  
I = 6.80  
C = 0.4  
Q = 0.56 cfs.  
Df = 0.45'

A = 1.0 ac.  
TC = 5.4  
I = 6.70  
C = 0.4  
Q = 2.48 cfs.  
Df = 0.75'

A = 10 + 0.4 + 0.4  
A = 1.8 ac.  
TC = 6.0  
I = 6.55  
C = 0.4  
Q = 4.72 cfs.  
Df = 0.45'

A = 0.3 + 0.4  
A = 0.7 ac.  
TC = 5.0  
I = 6.80  
C = 0.4  
Q = 1.90 cfs.  
Df = 0.35'

A = 0.4 + 0.4 + 0.8  
A = 1.6 ac.  
TC = 6.0  
I = 6.47  
C = 0.4  
Q = 3.89 cfs.  
Df = 0.40'

A = 0.8 ac.  
TC = 5.0  
I = 6.80  
C = 0.4  
Q = 2.18 cfs.  
Df = 0.35'

A = 1.4  
TC = 6.1  
I = 6.50  
C = 0.4  
Q = 3.64 cfs.  
Df = 0.40'

A = 22.8 + 0.2 + 2.1 + 0.4 + 0.3 + 0.3  
A = 26.1 ac.  
TC =  $5 + \frac{1500 - 400}{300} = 8.7$   
I = 6.02 (10 years Frequency)  
C = 0.4  
Q = ACI = 62.85 cfs. @ 33' @ 1.60%

DRAINAGE AREA MAP  
TALL OAK ESTATES  
HOWARD COUNTY  
MARYLAND  
OCT., 1964 SCALE: 1" = 200'

PARKWAY SURVEYS  
6219 BALTIMORE AVENUE  
RIVERDALE MARYLAND  
UL-4-7458



RECEIVED  
CLINTON G. LIGHT JR.  
PLANNING COMMISSION

RS-007-002

MD 749