

NO.	NORTH	EAST	NO.	NORTH	EAST
1.	519,024.427	852,944.694	23.	518,686.403	852,798.211
2.	519,030.162	853,046.913	24.	518,469.554	852,874.176
3.	518,998.632	853,175.944	25.	518,535.220	853,029.477
4.	518,986.657	853,224.246	26.	518,572.659	853,102.955
5.	518,943.953	853,399.705	27.	518,644.575	853,244.099
6.	518,903.707	853,456.666	28.	518,678.200	853,255.024
7.	518,835.437	853,514.325	29.	518,742.929	853,222.044
8.	518,708.661	853,797.505	30.	518,765.626	853,266.596
9.	518,613.486	853,644.725	31.	518,307.337	853,500.109
10.	518,145.330	853,773.865	32.	518,205.367	853,538.154
11.	518,052.556	853,811.106	33.	518,070.492	853,571.834
12.	517,960.990	853,618.622	34.	518,058.396	853,523.320
13.	517,916.202	853,588.429	35.	518,193.481	853,489.640
14.	517,838.606	853,360.103	36.	518,284.631	853,455.559
15.	517,800.855	853,373.329	37.	518,589.099	853,300.423
16.	517,939.776	853,059.765	38.	518,600.025	853,266.799
17.	518,009.889	852,901.512	39.	518,525.042	853,119.636
18.	518,230.630	852,865.123	40.	518,490.669	853,052.177
19.	518,157.449	852,482.386	41.	518,422.364	852,890.707
20.	518,332.147	852,459.124	42.	518,374.489	852,704.142
21.	518,385.412	852,474.820	43.	518,335.889	852,483.432
22.	518,562.472	852,443.818	44.	518,423.741	852,695.528

NO.	RADIUS	LENGTH	TANGENT	CHORD BEARING & DIST.
3-29	450.00	263.58	135.69	N10°13'12"W, 259.83'
4-30	400.00	228.00	117.19	N10°40'17"W, 224.92'
31-32	479.32	108.87	54.67	N20°30'00"W, 108.63'
33-12	375.00	119.58	60.30	N23°08'09"W, 119.08'
13-34	425.00	157.29	79.55	S24°36'09"E, 156.39'
35-36	429.82	97.52	48.97	S20°30'00"W, 97.31'
24-44	1185.40	184.62	92.49	S75°37'00"W, 184.43'
41-42	1235.40	192.80	96.59	S75°36'27"W, 192.61'
20-43	603.50	24.60	12.30	N81°14'52"E, 24.60'

Point	Easting	Northing	Point	Easting	Northing
A	930' 55.14"E	91.57'	L	901' 10.21"W	57.17'
B	969' 07.18"W	73.00'	M	1033' 18.11"E	43.55'
C	1055' 36.07"E	73.96'	N	1040' 56.47"E	89.50'
D	1030' 47.25"E	77.14'	O	1025' 05.08"E	83.24'
E	1048' 00.00"E	83.00'	P	1006' 54.80"E	81.00'
F	940' 34.49"E	14.91'	Q	1016' 18.06"E	49.14'
G	1030' 50.00"E	18.77'	R	916' 18.06"W	33.00'
H	930' 50.00"W	28.24'	S	906' 54.80"W	115.50'
I	940' 34.49"E	27.45'	T	940' 54.20"W	69.76'
J	930' 51.19"E	23.00'	U	916' 50.16"W	42.24'
K	943' 00.00"W	34.00'	V	940' 58.40"W	48.01'

LOT SIZE (SQ. FT.)	No. OF LOTS	AREA OF LOTS (ACRES)	MANDATORY OPEN SPACE (SQ. FT.)	AREA OF OPEN SPACE (ACRES)
20,000 or larger	14	6.978	10%	0.7181 Ac.
18,000 to 19,999	3	1.310	20%	0.2620 Ac.
16,000 to 17,999	3	1.310	30%	0.3930 Ac.
14,000 to 15,999	7	2.965	30%	0.8895 Ac.
TOTALS	37	14.122		1.975 Ac.

APPROVED: FOR PUBLIC WATER AND PUBLIC SEWERAGE SYSTEMS, IN CONFORMANCE WITH THE MASTER PLAN OF WATER AND SEWERAGE FOR HOWARD COUNTY.

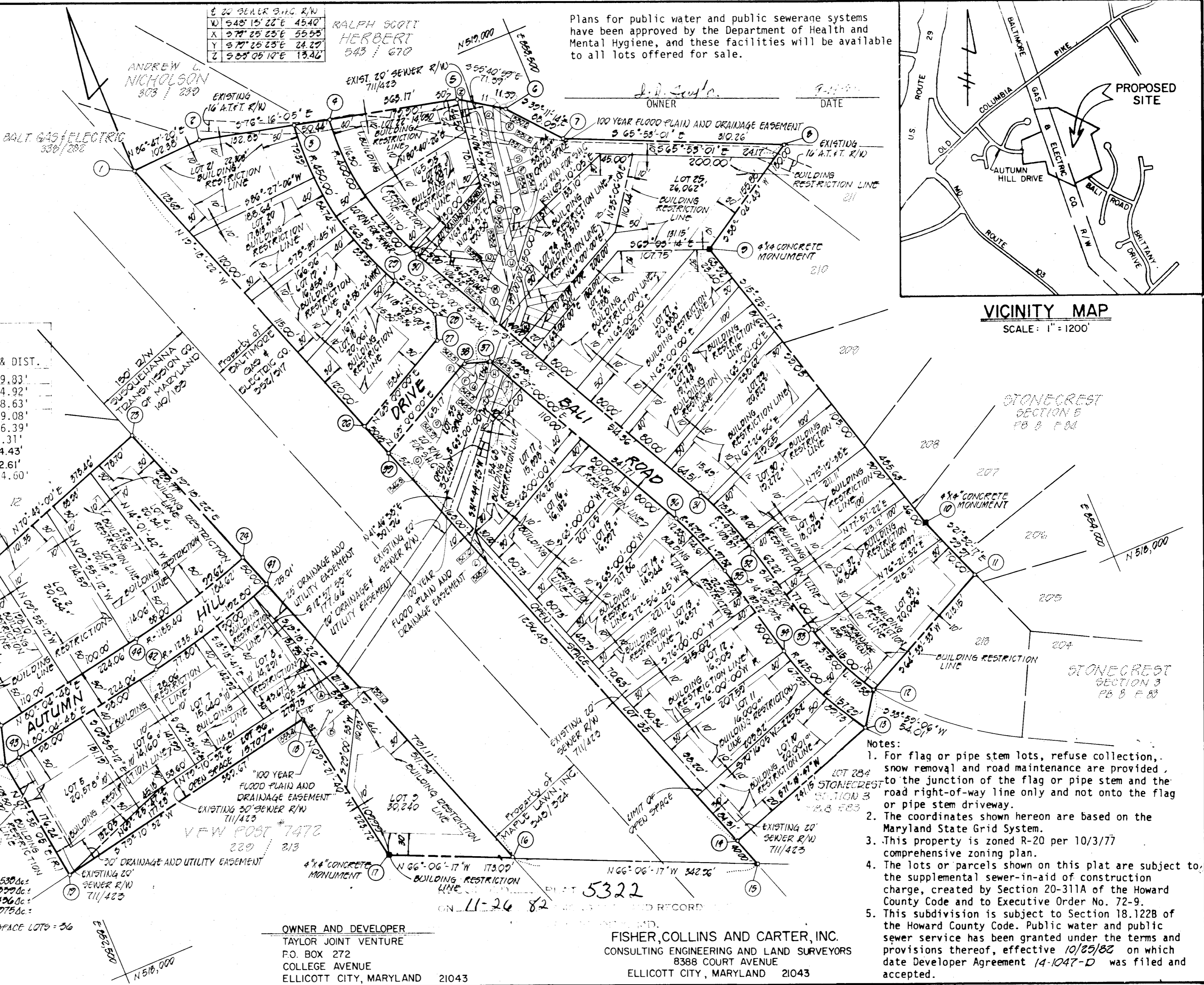
John J. ... 11-24-82
HOWARD COUNTY HEALTH OFFICER DATE

APPROVED: HOWARD COUNTY OFFICE OF PLANNING AND ZONING

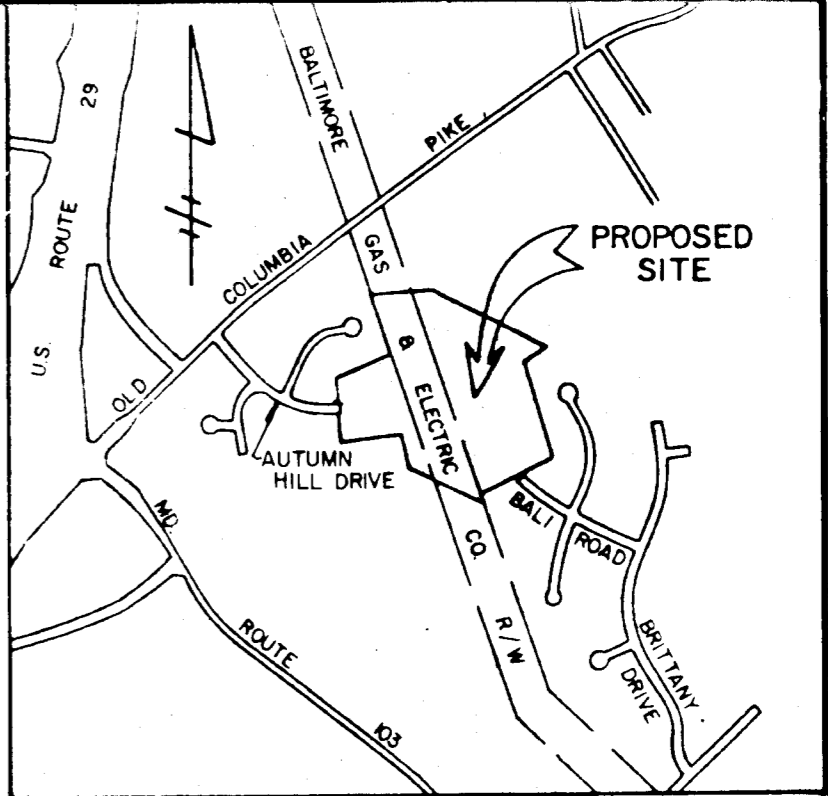
PLANNING DIRECTOR DATE

APPROVED: FOR PUBLIC WATER, PUBLIC SEWERAGE, STORM DRAINAGE SYSTEMS AND PUBLIC ROADS. HOWARD COUNTY DEPARTMENT OF PUBLIC WORKS.

... DATE



Plans for public water and public sewerage systems have been approved by the Department of Health and Mental Hygiene, and these facilities will be available to all lots offered for sale.



Notes:

- For flag or pipe stem lots, refuse collection, snow removal and road maintenance are provided, to the junction of the flag or pipe stem and the road right-of-way line only and not onto the flag or pipe stem driveway.
- The coordinates shown hereon are based on the Maryland State Grid System.
- This property is zoned R-20 per 10/3/77 comprehensive zoning plan.
- The lots or parcels shown on this plat are subject to the supplemental sewer-in-aid of construction charge, created by Section 20-311A of the Howard County Code and to Executive Order No. 72-9.
- This subdivision is subject to Section 18.122B of the Howard County Code. Public water and public sewer service has been granted under the terms and provisions thereof, effective 10/25/82 on which date Developer Agreement 14-1047-D was filed and accepted.

DEDICATION FOR CORPORATIONS

WE, TAYLOR LANDHOLDING COMPANY, A STATE OF MARYLAND CORPORATION BY IRVING J. TAYLOR, PRESIDENT AND BRUCE T. TAYLOR, PRESIDENT, OWNERS OF THE PROPERTY SHOWN AND DESCRIBED HEREON, HEREBY ADOPTED THIS PLAN OF SUBDIVISION, AND IN CONSIDERATION OF THE APPROVAL OF THIS FINAL PLAT BY THE OFFICE OF PLANNING AND ZONING, ESTABLISH THE MINIMUM BUILDING RESTRICTION LINES AND GRANT UNTO HOWARD COUNTY, MARYLAND, ITS SUCCESSORS AND ASSIGNS, (1) THE RIGHT TO LAY, CONSTRUCT AND MAINTAIN SEWERS, DRAINS, WATER PIPES AND OTHER MUNICIPAL UTILITIES AND SERVICES, IN AND UNDER ALL ROADS AND STREET RIGHT-OF-WAYS AND THE SPECIFIC EASEMENT SHOWN HEREON; (2) THE RIGHT TO REQUIRE DEDICATION FOR PUBLIC USE THE BEDS OF THE STREETS AND/OR ROADS, AND FLOODPLAINS AND OPEN SPACE WHERE APPLICABLE AND FOR GOOD AND OTHER VALUABLE CONSIDERATION, HEREBY GRANT THE RIGHT AND OPTION TO HOWARD COUNTY TO ACQUIRE THE FEE SIMPLE TITLE TO THE BEDS OF THE STREET AND/OR ROADS AND FLOODPLAINS, STORM DRAINAGE FACILITIES AND OPEN SPACE WHERE APPLICABLE; AND (3) THE RIGHT TO REQUIRE DEDICATION OF WATERWAYS AND DRAINAGE EASEMENTS FOR THE SPECIFIC PURPOSE OF THEIR CONSTRUCTION, REPAIR AND MAINTENANCE; AND (4) THAT NO BUILDING OR SIMILAR STRUCTURE OF ANY KIND SHALL BE ERRECTED ON OR OVER THE SAID EASEMENTS AND RIGHT-OF-WAYS.

WITNESS OUR HANDS THIS 11th DAY OF SEPTEMBER, 1982.

ATTEST:
TAYLOR LANDHOLDING COMPANY, INC.
By: IRVING J. TAYLOR, PRESIDENT

SURVEYOR'S CERTIFICATE

I HEREBY CERTIFY THAT THE FINAL PLAT SHOWN HEREON IS CORRECT, THAT IT IS A SUBDIVISION OF ALL OF THE LANDS CONVEYED TO TAYLOR LANDHOLDING COMPANY, INC. FROM HOWARD COUNTY SANITARIUM COMPANY, INC. BY DEED DATED APRIL 20, 1982 AND RECORDED AMONG THE LAND RECORDS OF HOWARD COUNTY IN LIBER 1117 AT FOLIO 537, AND FROM HISTORIC ELlicOTT PROPERTIES, INC. BY DEED DATED APRIL 20, 1982 AND RECORDED AMONG THE AFORESAID LAND RECORDS IN LIBER 1117 AT FOLIO 539, AND FROM COLLEGE AVENUE, INC. DATED APRIL 20, 1982 AND RECORDED AMONG THE AFORESAID LAND RECORDS IN LIBER 1117 AT FOLIO 541 THRU 551, INCLUSIVE, AND THAT ALL MONUMENTS ARE IN PLACE OR WILL BE IN PLACE PRIOR TO THE ACCEPTANCE OF THE STREETS IN THE SUBDIVISION BY HOWARD COUNTY AS SHOWN, IN ACCORDANCE WITH THE ANNOTATED CODE OF MARYLAND AS AMENDED.

... 11-8-1982
Date

PLAT # 5322
TAYLOR PROPERTY

SECTION ONE
LOTS 1-36

2ND ELECTION DISTRICT
HOWARD COUNTY, MARYLAND

TAX MAP 24 PARCEL
SCALE: 1" = 100' AUGUST 21, 1981

740