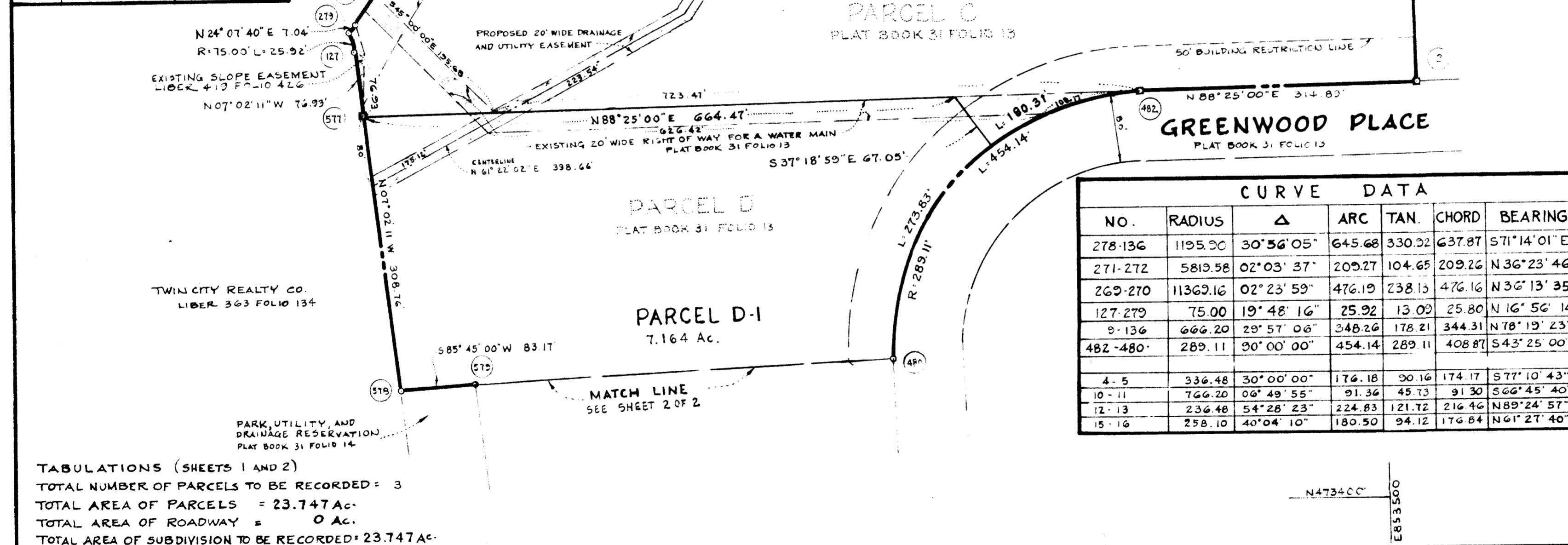


COORDINATES		
NO.	NORTH	EAST
127	473 913.25	852 358.37
136	474 411.54	853 476.62
1	474 409.05	853 519.80
2	473 869.71	853 534.71
482	473 861.01	853 219.95
3	474 245.47	852 552.22
269	473 944.35	852 333.74
270	474 328.46	852 615.13
271	474 419.01	852 684.43
272	474 587.45	852 808.60
278	474 616.75	852 872.66
279	473 937.93	852 330.86
577	473 836.90	852 347.80
4	474 241.84	852 625.94
5	474 203.19	852 795.77
6	474 190.70	852 826.90
7	474 195.86	852 857.12
8	474 238.70	852 933.02
9	474 341.85	853 139.43
10	474 467.23	853 178.46
11	474 431.22	853 094.57
12	474 328.08	852 889.06
13	474 330.28	852 972.61
14	474 392.96	852 706.99
15	474 486.69	852 789.70
16	474 571.17	852 945.05
480	473 564.02	852 936.94
505	473 391.20	852 943.72
549	473 380.57	852 559.34
572	473 379.91	852 535.35
573	473 378.63	852 488.89
575	473 520.27	852 470.24
579	473 536.63	852 468.56
578	473 530.47	852 385.62



TABULATIONS (SHEETS 1 AND 2)  
 TOTAL NUMBER OF PARCELS TO BE RECORDED = 3  
 TOTAL AREA OF PARCELS = 23.747 Ac.  
 TOTAL AREA OF ROADWAY = 0 Ac.  
 TOTAL AREA OF SUBDIVISION TO BE RECORDED = 23.747 Ac.

CURVE DATA						
NO.	RADIUS	Δ	ARC TAN.	CHORD	BEARING	
278-136	1195.90	30°56'05"	645.68	330.92	637.87	S71°14'01"E
271-272	5819.58	02°03'37"	209.27	104.65	209.26	N36°23'46"E
269-270	11369.16	02°23'59"	476.19	238.13	476.16	N36°13'35"E
127-279	75.00	19°48'16"	25.92	13.09	25.80	N16°56'14"W
9-136	666.20	29°57'06"	348.26	178.21	344.31	N78°19'23"E
482-480	289.11	90°00'00"	454.14	289.11	408.87	S43°25'00"W
4-5	336.48	30°00'00"	176.18	90.16	174.17	S77°10'43"E
10-11	766.20	06°49'55"	91.36	45.73	91.30	S66°45'40"W
12-13	236.48	54°28'23"	224.83	121.72	216.46	N89°24'57"W
15-16	258.10	40°04'10"	180.50	94.12	176.84	N61°27'40"E

- NOTES:
- THE LOTS OR PARCELS SHOWN ON THIS PLAT ARE SUBJECT TO THE SUPPLEMENTAL SEWER IN-AID-OF-CONSTRUCTION CHARGE CREATED BY SECTION 20-311A OF HOWARD COUNTY CODE AND TO EXECUTIVE ORDER NO. 72-9.
  - AS TO ANY STORM DRAINAGE EASEMENT SHOWN HEREON, THE OWNER OF THE PROPERTY, ITS SUCCESSORS AND ASSIGNS, SHALL BE RESPONSIBLE FOR THE MAINTENANCE THEREOF.
  - DENOTES 4" X 4" X 36" CONCRETE MONUMENT.
  - STORM WATER MANAGEMENT IS REQUIRED IN THIS DEVELOPMENT. THE 0 YEAR AND 2 YEAR DESIGN DISCHARGES OF STORM WATER FROM THIS DEVELOPMENT SHALL BE NO GREATER THAN THAT WHICH WOULD HAVE OCCURRED FROM THE SITE PRIOR TO DEVELOPMENT.
  - THIS PLAT AND THE COORDINATES SHOWN HEREON ARE BASED ON BOUNDARY CONTROL BY CENTURY ENGINEERING AND TRAVERSE CONTROLS WHICH WERE TIED TO MARYLAND BUREAU OF CONTROL SURVEYS MONUMENTS AND TO U.S. COAST & GEODETIC SURVEY MONUMENTS.
  - SUBJECT PROPERTY ZONED M-2 PER 10-3-77 COMPREHENSIVE ZONING PLAN.
  - WATER AND SEWER SERVICE FOR THESE LOTS WILL BE GRANTED UNDER THE PROVISIONS OF SECTION 18.122B OF THE HOWARD COUNTY CODE.
  - SEE O.P.&Z. FILE: F-75-57

APPROVED: For public sewerage systems and public water systems; in conformance with the master plan of water and sewerage for Howard County  
*Joyce H. Boyd, M.D., D.P.H.* 12-15-81  
 County Health Officer Date

APPROVED: Howard County Office of Planning & Zoning  
*D. D. ...* 12-15-81  
 Director Date

APPROVED: For public water, public sewerage, storm drainage systems and public roads, Howard County Department of Public Works  
*W. F. ...* 12-14-81  
 Director Date

SURVEYORS CERTIFICATE  
 I hereby certify that the Final Plat shown hereon is correct; that it is a subdivision of part of the lands conveyed by Ephraim Winer, et al. and Samuel A. Hearn, et al. to Columbia Industrial Development Corporation deeds dated April 29, 1974 and January 18, 1975, respectively, and recorded in the land records of Howard County, in Liber 678, Folio 749 thru and including 757 and Liber 709, Folios 421 thru and including 425, and that all monuments are in place as shown in accordance with the Annotated Code of Maryland, as amended.

*H. Richard Meale*  
 H. Richard Meale  
 Property Line Surveyor No. 77  
 The Rouse Company  
 Columbia, Maryland  
 21044

DEDICATION FOR CORPORATION  
 We, Columbia Industrial Development Corporation, a Maryland corporation, by Frederick W. Glassberg, Vice President and John H. Gurdley, Assistant Secretary, owner of the property shown and described hereon, hereby adopt this plan of subdivision, and in consideration of the approval of this Final Plat by the Office of Planning and Zoning, establish the minimum building restriction lines and grant unto Howard County, Maryland its successors and assigns (1) the right to lay, construct and maintain sewers, drains, water pipes and other municipal utilities and services in and under all roads and street rights-of-way and the specific easements areas shown hereon; (2) the right to require dedication for public use the beds of the streets and/or roads, and floodplains and open space where applicable and for good and other valuable consideration, hereby grant the right and option to Howard County to acquire the fee simple title to the beds of the street and/or roads and floodplains, storm drainage facilities and open space where applicable; and (3) the right to require dedication of waterways and drainage easements for the specific purpose of their construction, repair and maintenance; and (4) that no building or similar structure of any kind shall be erected on or over the said easements and rights-of-ways.

Witness our hands this 25th day of August, 1981.

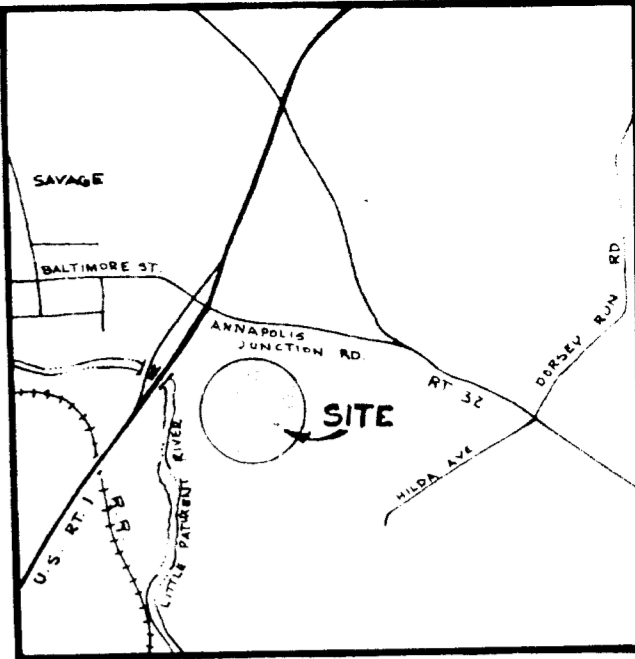
*Frederick W. Glassberg* Vice President  
*John H. Gurdley* Assistant Secretary

RECORDED ON 12-15 AS PLAT 6071  
 AMONG THE LAND RECORDS OF  
 HOWARD COUNTY, MARYLAND.

**CORRIDOR INDUSTRIAL PARK**  
 SECTION I  
 PARCELS C-1, D-1, AND E-2  
 A RESUBDIVISION OF PARCELS C, D, AND E-1

SHEET 1 OF 2

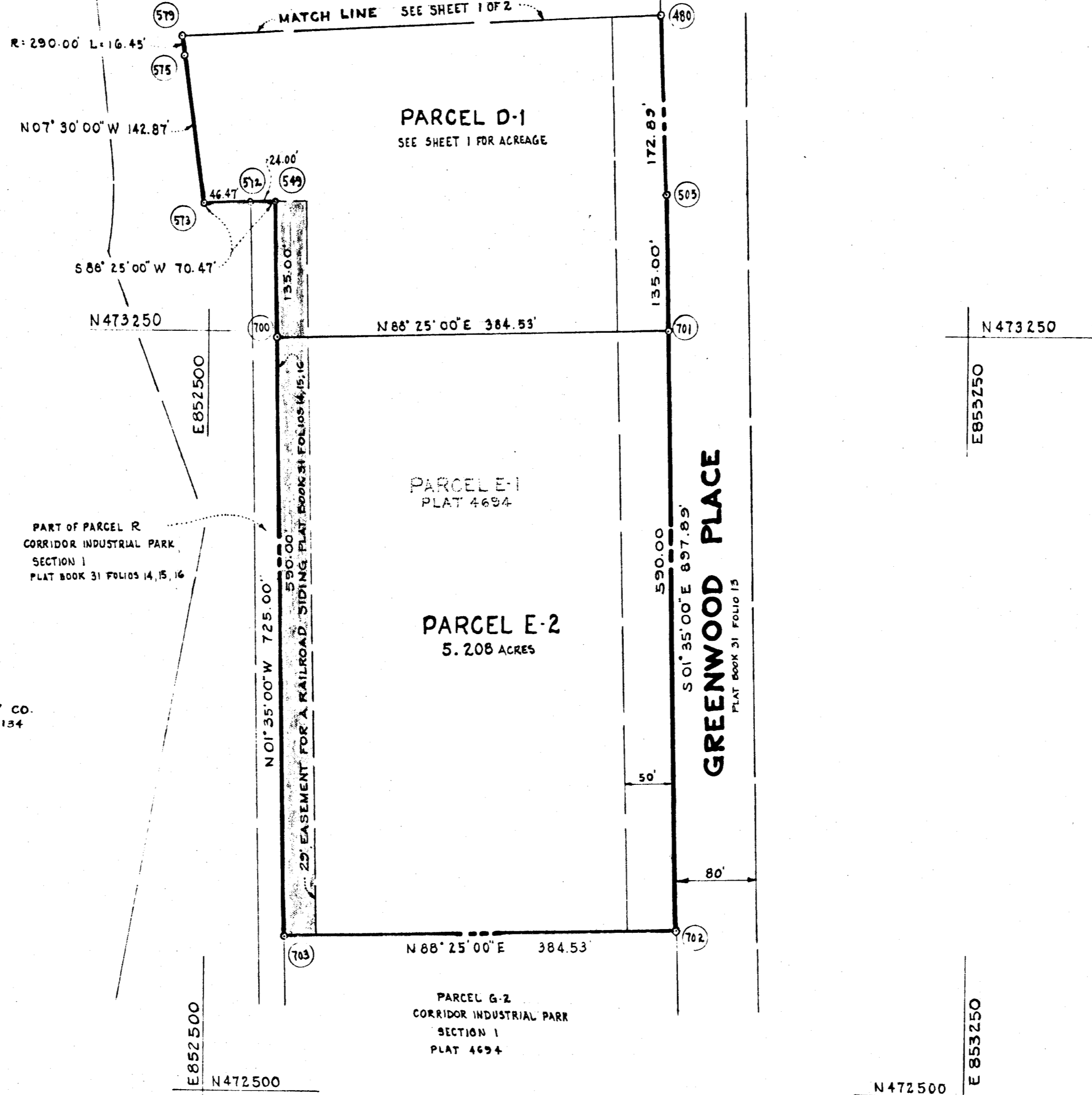
6<sup>TH</sup> ELECTION DISTRICT OF HOWARD COUNTY, MD.  
 TAX MAP 47  
 SCALE: 1" = 100' DATE: August 25, 1981



471

F-80-47

COORDINATES			CURVE DATA						
NO.	NORTH	EAST	NO.	RADIUS	Δ	ARC	TAN.	CHORD	BEARING
505	473391.20	852943.72							
549	473380.57	852559.34	575-579	290.00	03° 15' 00"	16.45	8.25	16.45	N05° 52' 30" W
572	473379.91	852535.35							
573	473378.63	852488.89							
575	473520.27	852470.24							
700	473245.62	852563.07							
701	473256.25	852947.45							
702	472666.48	852963.75							
703	472655.85	852579.37							



- NOTES:
1. THE LOTS OR PARCELS SHOWN ON THIS PLAT ARE SUBJECT TO THE SUPPLEMENTAL SEWER IN-AID-OF-CONSTRUCTION CHARGE CREATED BY SECTION 20.311A OF HOWARD COUNTY CODE, AND TO EXECUTIVE ORDER NO-T2-9.
  2. AS TO ANY STORM DRAINAGE EASEMENT SHOWN HEREON, THE OWNER OF THE PROPERTY, ITS SUCCESSORS AND ASSIGNS, SHALL BE RESPONSIBLE FOR THE MAINTENANCE THEREOF.
  3. □ = DENOTES 4" x 4" x 36" CONCRETE MONUMENT.
  4. STORM WATER MANAGEMENT IS REQUIRED IN THIS DEVELOPMENT. THE 10 YEAR AND 2 YEAR DESIGN DISCHARGES OF STORM WATER FROM THIS DEVELOPMENT SHALL BE NO GREATER THAN THAT WHICH WOULD HAVE OCCURRED FROM THE SITE PRIOR TO DEVELOPMENT.
  5. THIS PLAT AND THE COORDINATES SHOWN HEREON ARE BASED ON BOUNDARY CONTROL BY CENTURY ENGINEERING AND TRAVERSE CONTROLS WHICH WERE TIED TO MARYLAND BUREAU OF CONTROL SURVEYS MONUMENTS AND TO U.S. COAST & GEODETIC SURVEY MONUMENTS.
  6. SUBJECT PROPERTY ZONED M-Z PER 10-3-77 COMPREHENSIVE ZONING PLAN.
  7. WATER AND SEWER SERVICE FOR THESE LOTS WILL BE GRANTED UNDER THE PROVISIONS OF SECTION 18.122B OF THE HOWARD COUNTY CODE.
  8. SEE O.P. & Z. FILE: F-75-57

TABULATIONS  
SEE SHEET 1

APPROVED: For public sewerage systems and public water systems; in conformance with the master plan of water and sewerage for Howard County

*George M. Boyd* 12-15-81  
County Health Officer Date

APPROVED: Howard County Office of Planning & Zoning

*William J. King* 12-15-81  
Director Date

APPROVED: For public water, public sewerage, storm drainage systems and public roads, Howard County Department of Public Works.

*Michael F. Newman* 12-14-81  
Director Date

SURVEYOR'S CERTIFICATE

I hereby certify that the Final Plat shown hereon is correct; that it is a subdivision of part of the lands conveyed by Ephraim Winer, et. al. and Samuel A. Hearn, et al. to Columbia Industrial Development Corporation by deeds dated April 29, 1974 and January 18, 1975, respectively, and recorded in the land records of Howard County, in Liber 678, Folio 749 thru and including 757 and Liber 709, Folios 421 thru and including 425, and that all monuments are in place as shown in accordance with the Annotated Code of Maryland, as amended.

*H. Richard Moadle*  
H. Richard Moadle  
Property Line Surveyor No. 77  
The Rouse Company  
Columbia, Maryland  
21044

DEDICATION FOR CORPORATION

We, Columbia Industrial Development Corporation, a Maryland corporation, by Frederick N. Glassberg, Vice President and John H. Gurley, Assistant Secretary, owner of the property shown and described hereon, hereby adopt this plan of subdivision, and in consideration of the approval of this Final Plat by the Office of Planning and Zoning, establish the minimum building restriction lines and grant unto Howard County, Maryland its successors and assigns (1) the right to lay, construct and maintain sewers, drains, water pipes and other municipal utilities and services in and under all roads and street rights-of-way and the specific easements areas shown hereon; (2) the right to require dedication for public use the beds of the streets and/or roads, and floodplains and open space where applicable and for good and other valuable consideration, hereby grant the right and option to Howard County to acquire the fee simple title to the beds of the street and/or roads and floodplains, storm drainage facilities and open space where applicable; and (3) the right to require dedication of waterways and drainage easements for the specific purpose of their construction, repair and maintenance; and (4) that no building or similar structure of any kind shall be erected on or over said easements and rights-of-ways.

Witness our hands this 25th day, August, 1981.

*Frederick N. Glassberg*  
Vice President

*John H. Gurley*  
Assistant Secretary

RECORDED ON 12-15 AS PLAT 5072  
AMONG THE LAND RECORDS OF  
HOWARD COUNTY, MARYLAND

**CORRIDOR INDUSTRIAL PARK**  
SECTION 1  
PARCELS C-1, D-1 AND E-2  
A RESUBDIVISION OF PARCELS C, D, AND E-1

SHEET 2 of 2

6<sup>TH</sup> ELECTION DISTRICT OF HOWARD COUNTY, MD.  
TAX MAP 47

SCALE: 1" = 100' DATE: August 25, 1981