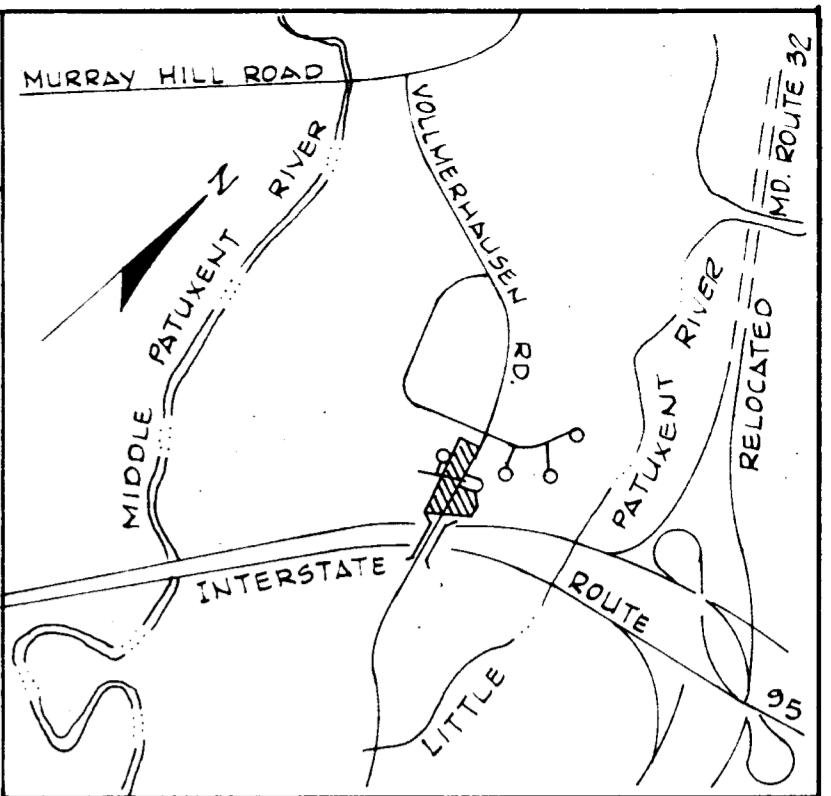


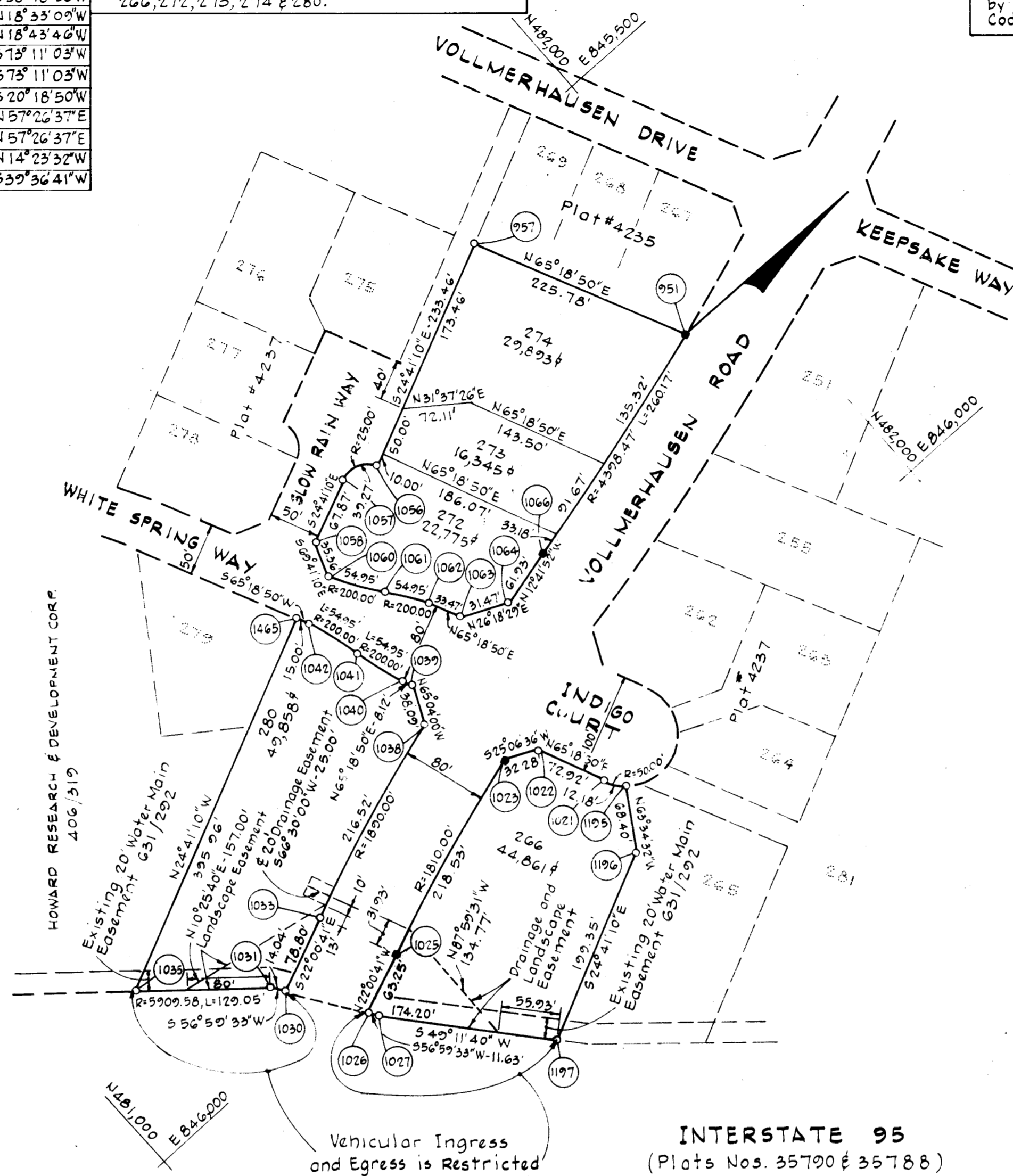
CURVE DATA						
NO.	RADIUS	Δ	ARC	TANGENT	CHORD	CRD. BRG.
1195-1021	50.00'	13° 57' 12"	12.18'	6.12'	12.15'	S58° 18' 56" W
1023-1025	1810.00'	06° 55' 03"	218.53'	109.40'	218.39'	N18° 33' 09" W
1033-1038	1890.00'	06° 33' 50"	216.52'	108.38'	216.40'	N18° 43' 46" W
1040-1041	200.00'	15° 44' 26"	54.95'	27.65'	54.77'	S73° 11' 03" W
1041-1042	200.00'	15° 44' 26"	54.95'	27.65'	54.77'	S73° 11' 03" W
1056-1057	25.00'	90° 00' 00"	39.27'	25.00'	35.36'	S20° 18' 50" W
1060-1061	200.00'	15° 44' 26"	54.95'	27.65'	54.77'	N57° 26' 37" E
1061-1062	200.00'	15° 44' 26"	54.95'	27.65'	54.77'	N57° 26' 37" E
1066-951	4398.47'	03° 23' 21"	260.17'	130.12'	260.13'	N14° 23' 32" W
1031-1035	5909.58'	01° 15' 04"	129.05'	64.53'	129.04'	S39° 36' 41" W

**SPECIAL NOTE**  
 Vehicular Ingress and Egress to and from Vollmerhausen Road is restricted for lots 266, 272, 273, 274 & 280.

The lots or parcels shown on this plat are subject to the supplemental sewer in-aid-of-construction charge created by section 20-311A of the Howard County Code, and to Executive Order No. 72-9.



NO.	NORTH	EAST
951	481 919.88	845 751.06
957	481 825.58	845 546.81
1021	481 571.72	846 015.32
1022	481 541.26	845 949.06
1023	481 512.04	845 935.36
1025	481 304.97	846 004.85
1026	481 246.35	846 028.56
1027	481 252.68	846 038.31
1030	481 201.95	845 960.22
1031	481 194.30	845 948.44
1033	481 275.01	845 930.68
1035	481 094.89	845 866.16
1038	481 479.95	845 861.20
1039	481 496.00	845 826.66
1040	483 208.99	846 809.81
1041	481 476.77	845 766.85
1042	481 460.92	845 714.42
1056	481 613.45	845 644.31
1057	481 580.30	845 632.04
1058	481 518.63	845 660.38
1060	481 506.35	845 693.54
1061	481 535.83	845 739.71
1062	481 565.30	845 785.87
1063	481 579.28	845 816.28
1064	481 607.49	845 830.23
1066	481 667.91	845 816.62
1195	481 578.09	846 025.66
1196	481 547.65	846 086.91
1197	481 366.52	846 170.17
1465	481 454.66	845 700.79



- NOTES:**
- This plat and coordinates shown hereon are based upon traverse controls for Columbia established by Maps, Inc. in 1965 and Purdum and Jeschke in 1968, which controls were tied to the Maryland Bureau of Control Surveys monuments and to U.S. Coast and Geodetic Survey monuments in the Columbia area.
  - This plat is based on boundary survey data prepared by Purdum and Jeschke, Engineers, Ellicott City, Md.
  - 4"x4"x36" conc. mon. indicated thus ■.
  - Minimum building setback restrictions from property lines and right-of-way of any public road or street to be in accordance with the recorded Final Development Plan Criteria, Phase 169 Part I.
  - The "drainage" easements shown hereon are "drainage and utility" easements.
  - Open space may, but is not required to, contain future pathway.
  - On July 16, 1979 the County Council approved Resolution #139 which provided for the closing of portions of Vollmerhausen Road.

**RECEIVED**  
 DEC 10 1979  
 BUREAU OF ENGINEERING

**TABULATION**

Total number of lots to be recorded	5
Total area of lots to be recorded	3.759 Ac.
Total area of roadway to be recorded	0 Ac.
Total area of subdivision to be recorded	3.759 Ac.

**INTERSTATE 95**  
 (Plats Nos. 35790 & 35788)

**NOTE:** The purpose of this plat is to record Lots 266, 272, 273, 274 and 280 which were shown as "Future" on Sheet 11 of 13 of the Village of Kings Contrivance, Section 3 Area 1 as recorded as Plat 4237 on March 8, 1979.

APPROVED: FOR PUBLIC WATER AND PUBLIC SEWERAGE SYSTEMS, HOWARD COUNTY HEALTH DEPARTMENT

*[Signature]* 11-16-79  
 COUNTY HEALTH OFFICER DATE

APPROVED: HOWARD COUNTY OFFICE OF PLANNING AND ZONING

*[Signature]* 11/17/79  
 DIRECTOR DATE

APPROVED: FOR PUBLIC WATER AND PUBLIC SEWERAGE STORMS DRAINAGE SYSTEMS AND PUBLIC ROADS HOWARD COUNTY DEPARTMENT OF PUBLIC WORKS

*[Signature]*  
 DIRECTOR DATE

**OWNER'S CERTIFICATE**

WE, THE HOWARD RESEARCH AND DEVELOPMENT CORPORATION, A MARYLAND CORPORATION BY WALTER E. WOODFORD, JR., AUTHORIZED AGENT, AND FRANCIS R. HUNTER, JR., ASSISTANT SECRETARY, OWNER OF THE PROPERTY SHOWN AND DESCRIBED HEREON, HEREBY ADOPT THIS PLAN OF SUBDIVISION AND IN THE CONSIDERATION OF THE APPROVAL OF THIS FINAL PLAT BY THE OFFICE OF PLANNING AND ZONING, ESTABLISH THE MINIMUM BUILDING RESTRICTION LINES AND GRANT UNTO HOWARD COUNTY, MARYLAND, ITS SUCCESSORS AND ASSIGNS (1) THE RIGHT TO LAY, CONSTRUCT AND MAINTAIN SEWERS, DRAINS, WATER PIPES AND OTHER MUNICIPAL UTILITIES AND SERVICES, IN AND UNDER ALL ROADS AND STREET RIGHT-OF-WAYS AND THE SPECIFIC EASEMENT AREAS SHOWN HEREON; (2) DEDICATE TO PUBLIC USE THE BEDS OF THE STREETS AND OR ROADS AND FLOODPLAINS AND OPEN SPACE WHERE APPLICABLE, AND FOR ONE DOLLAR (\$1.00) CONSIDERATION, HEREBY GRANT THE RIGHT AND OPTION TO HOWARD COUNTY TO ACQUIRE THE FEE SIMPLE TITLE TO THE BEDS OF THE STREETS AND OR ROADS AND FLOODPLAINS AND OPEN SPACE WHERE APPLICABLE; (3) THAT NO BUILDING OR SIMILAR STRUCTURE OF ANY KIND SHALL BE ERECTED ON OR OVER THE SAID EASEMENTS AND RIGHT-OF-WAYS; AND (4) IT IS FURTHER AGREED THAT MAINTENANCE OF ALL WATERWAYS, DRAINAGE EASEMENTS AND OR FLOODPLAINS SHOWN HEREON ARE THE RESPONSIBILITY OF THE PROPERTY OWNER, ITS SUCCESSORS AND ASSIGNS WITNESS OUR HANDS, THIS 7<sup>TH</sup> DAY OF November, 1979.

BY: *[Signature]* ATTEST: *[Signature]*  
 THE HOWARD RESEARCH AND DEVELOPMENT CORPORATION 10275 LITTLE PATUXENT PARKWAY, COLUMBIA, MARYLAND 21044

**SURVEYOR'S CERTIFICATE**

I HEREBY CERTIFY THAT THE FINAL PLAT SHOWN HEREON IS CORRECT; THAT IT IS A SUBDIVISION OF THE LANDS CONVEYED TO THE HOWARD RESEARCH AND DEVELOPMENT CORPORATION BY DEED LIBER 406/319 AND THAT ALL MONUMENTS ARE IN PLACE AS SHOWN, IN ACCORDANCE WITH THE ANNOTATED CODE OF MARYLAND, AS AMENDED.

DATE \_\_\_\_\_ REGISTERED LAND SURVEYOR \_\_\_\_\_

RECORDED AS PLAT # **4451**

ON Nov 21, 1979 AMONG THE LAND RECORDS OF HOWARD COUNTY, MARYLAND

**COLUMBIA**  
 VILLAGE OF KINGS CONTRIVANCE  
 LOTS 266, 272, 273, 274 and 280  
 SECTION 3  
 AREA 1  
 SHEET 1 OF 1  
 6TH ELECTION DISTRICT OF HOWARD COUNTY, MD.  
 SCALE: 1" = 100' DATE: Nov. 2, 1979

# 445

F-80-430