

CURVE DATA						
NOS.	RADIUS	Δ	ARC	TAN.	CHORD	BEARING
3-91	280.00	55°40'23"	272.07	147.86	261.49	N07°48'32"E
93-94	225.00	11°04'30"	43.49	21.81	43.42	S66°36'15"W
97-98	25.00	70°31'40"	30.77	17.68	28.67	S53°07'29"E
98-99	50.00	70°31'40"	61.55	35.36	57.74	S53°07'29"E
104-105	50.00	70°31'40"	61.55	35.36	57.74	S17°24'21"W
105-106	25.00	70°31'40"	30.77	17.68	28.67	S17°24'21"W
109-110	175.00	11°04'30"	33.83	16.97	33.78	N66°36'15"E
112-123	1025.00	12°49'02"	229.30	115.13	228.82	N26°39'26"W
90-130	1820.00	11°02'13"	350.60	175.84	350.05	N63°56'17"W
131-132	25.00	32°11'44"	14.04	7.22	13.86	N73°23'58"E
132-133	50.00	17°21'10"	15.14	7.63	15.08	N80°49'04"E
136-137	50.00	63°21'27"	55.29	30.86	52.52	N40°27'46"E
137-138	50.00	24°20'02"	21.24	10.78	21.08	N20°57'08"E
140-121	260.00	33°24'41"	151.62	78.03	149.48	N34°58'53"W

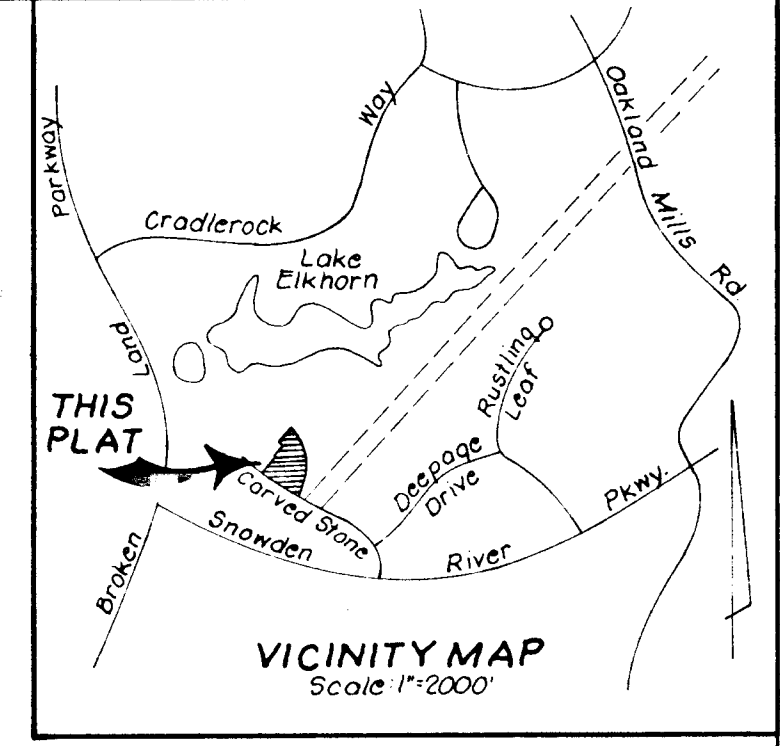
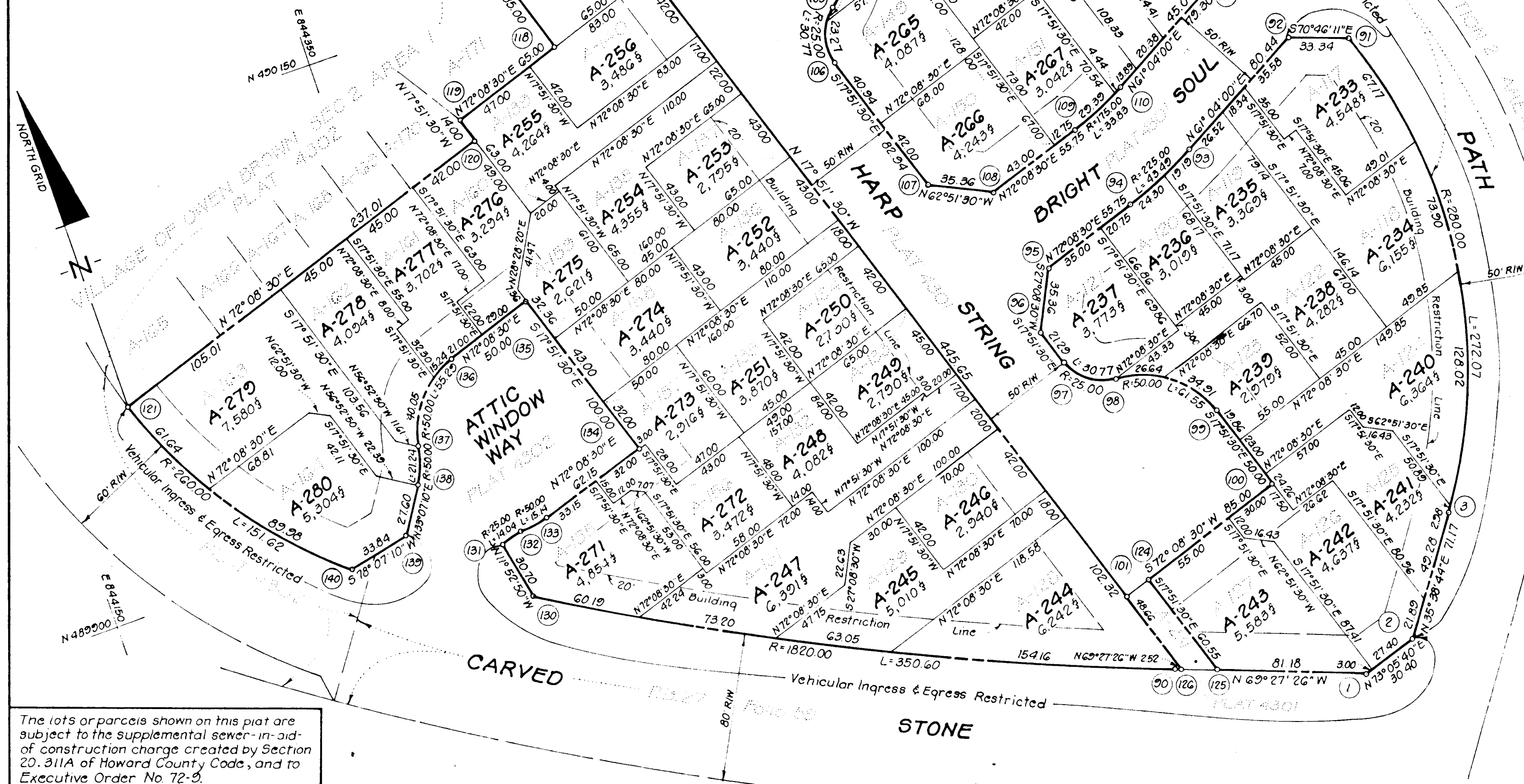
**TABULATION OF FINAL PLAT**

(1) Total number of lots and/or parcels to be recorded: 48

(2) Total area of lots and/or parcels and paths: 4.601 Acres

(3) Total area of roadways to be recorded including widening strips: None

(4) Total area of subdivision to be recorded: 4.601 Acres



- NOTES**
- 4"x4"x36" Concrete Monuments indicated thus:
  - Minimum building setback restrictions from property lines and the right-of-way of any public road or street to be in accordance with the Final Development Plan Criteria Phase 118 A:1 Part I recorded Feb 8, 1979 in Plats 3054A-177 thru 181.
  - All coordinates shown hereon are based on the Maryland State Grid System
  - Lots A-117 thru A-164 were recorded on Plats 4301 and 4302.
  - This plat and coordinates shown hereon are based upon Traverse Controls for Columbia established by Mops, Inc. in 1965 and by Purdum and Jeschke in 1968, which controls were tied to the Maryland Bureau of Controls surveys monuments and to U.S. Coast and Geodetic Survey monuments in the Columbia Area.
  - This plat is subject to V.P. 79-53c, V.P. 79-68c and V.P. 79-69c.
  - The purpose of this plat is to re-define Lots A-117 thru A-164 creating Lots A-233 thru A-280. Most of the interior lot lines have been moved approx. 3 feet.
  - Attic Window Way, Harp String and Bright Soul were dedicated to public use by Plats 4302 & 4301 respectively.

COORDINATE SCHEDULE			COORDINATE SCHEDULE		
NO.	NORTH	EAST	NO.	NORTH	EAST
1	489 650.55	844 779.61	112	490 063.37	844 837.03
2	489 659.39	844 808.70	116	490 262.91	844 620.54
3	489 717.23	844 850.18	117	490 195.34	844 453.19
4	489 686.64	844 683.31	118	490 114.43	844 479.26
5	489 576.30	844 885.70	119	490 094.50	844 417.35
6	489 587.28	844 854.23	120	490 081.18	844 421.68
7	489 548.37	844 783.83	121	490 008.50	844 196.09
8	489 931.12	844 743.98	122	490 240.29	844 624.67
9	489 914.03	844 690.92	123	490 267.86	844 734.37
10	489 882.56	844 674.79	124	489 736.68	844 685.02
11	489 862.30	844 681.32	125	489 679.04	844 703.59
12	489 844.98	844 704.41	126	489 685.76	844 685.66
13	489 810.33	844 750.59	130	489 840.43	844 368.85
14	489 762.74	844 765.92	131	489 870.47	844 362.53
15	489 732.08	844 670.74	132	489 874.43	844 375.82
16	490 156.26	844 534.08	133	489 876.84	844 390.71
17	490 186.92	844 629.26	134	489 895.90	844 449.86
18	490 139.33	844 644.59	135	489 991.08	844 419.20
19	490 084.24	844 627.32	136	489 975.75	844 371.60
20	490 056.70	844 618.68	137	489 935.79	844 337.52
21	489 977.75	844 644.12	138	489 916.11	844 329.99
22	489 961.62	844 675.58	139	489 893.00	844 314.91
23	489 978.72	844 728.64	140	489 886.03	844 281.79
24	489 992.13	844 759.64	146	490 228.71	844 514.40
25	490 030.49	844 829.04	147	490 212.35	844 514.40

The lots or parcels shown on this plat are subject to the supplemental sewer-in-aid-of construction charge created by Section 20.311A of Howard County Code, and to Executive Order No. 72-9.

**APPROVED FOR PUBLIC WATER & PUBLIC SEWERAGE SYSTEMS HOWARD CO HEALTH DEPT.**

*John Harris Gurley* 9-11-79  
COUNTY HEALTH OFFICER DATE

**APPROVED HOWARD COUNTY OFFICE OF PLANNING AND ZONING**

\_\_\_\_\_  
DIRECTOR DATE

**APPROVED FOR PUBLIC WATER AND PUBLIC SEWERAGE STORM DRAINAGE SYSTEMS & PUBLIC ROADS HOWARD CO. DEPT. OF PUBLIC WORKS.**

\_\_\_\_\_  
DIRECTOR DATE

**OWNER'S DEDICATION**

We, Owen Brown Tacoma Development Company, a Maryland Corporation, by Walter E. Woodford Jr., Auth. Agent, and John Harris Gurley, Assistant Secretary, owners of the property shown and described herein, hereby adopt this plan of resubdivision and in consideration of the approval of this Final Plat by the Office of Planning and Zoning, establish the minimum building restriction lines. All easements or rights-of-way affecting this property are included in this plat of resubdivision.

*John Harris Gurley* John Harris Gurley, Assistant Secretary  
*Walter E. Woodford Jr.* Walter E. Woodford Jr., Auth. Agent

**SURVEYOR'S CERTIFICATE**

I hereby certify that the Final Plat shown hereon is correct; that it is a resubdivision of Lots A-117 thru A-164 as shown on a plat of resubdivision entitled "Columbia, Village of Owen Brown, Lots A-117 thru A-232, a Resubdivision of Lot A-116", Section 2, Area 1" and recorded among the Land Records of Howard County, Maryland as Plats 4301 and 4302; said land was obtained by Owen Brown Tacoma Development Company, from The Howard Research and Development Corporation by deed dated May 25, 1973 and recorded among the aforesaid Land Records in Liber 637 at Folio 670 and that all monuments are in place as shown in accordance with the Annotated Code of Maryland, as amended.

7/21/79 Date  
*Donald B. Sackett*  
DONALD B. SACKETT  
Registered Land Surveyor  
Md. No. 6059

RECORDED AS PLAT \_\_\_\_\_

On 9-14, 1979, at \_\_\_\_\_

Land Records of Howard County, Maryland

**COLUMBIA VILLAGE OF OWEN BROWN**

**LOTS A-233 THRU A-280 A RESUBDIVISION OF LOTS A-117 THRU A-164**

SECTION 2 AREA 1

SHEET 1 OF 1

6<sup>TH</sup> Election District Howard County, Maryland

Scale: 1" = 50' July, 1979

CLARK FINEFROCK & SACKETT  
ENGINEERS-PLANNERS-SURVEYORS  
11315 LOCKWOOD DRIVE  
SILVER SPRING, MD. 20904