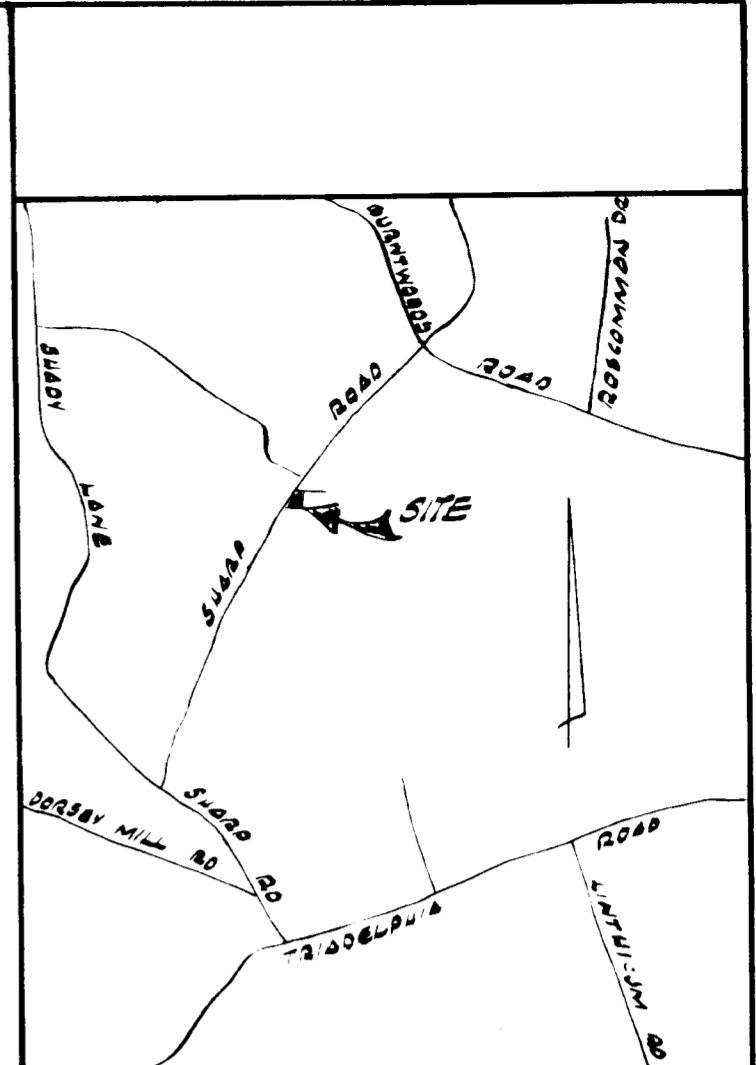


COORDINATES			
NO.	NORTH	EAST	MARK
1	8,935.33	19,523.93	10,000.00
2	16,281.33	18,596.81	10,588.03

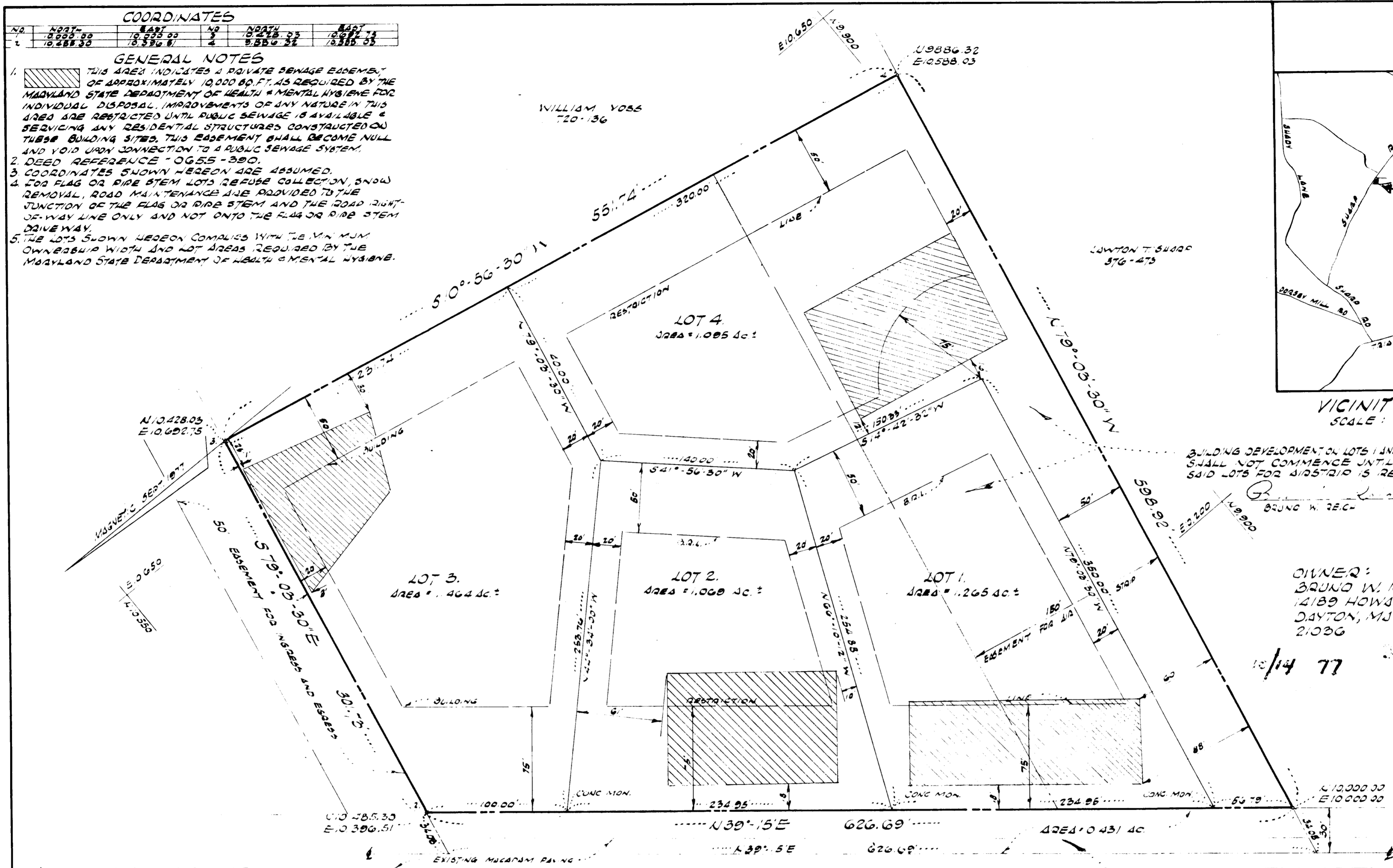
- GENERAL NOTES**
- THIS AREA INDICATES A PRIVATE SEWAGE EASEMENT OF APPROXIMATELY 10,000 SQ. FT. AS REQUIRED BY THE MARYLAND STATE DEPARTMENT OF HEALTH & MENTAL HYGIENE FOR INDIVIDUAL DISPOSAL. IMPROVEMENTS OF ANY NATURE IN THIS AREA ARE RESTRICTED UNTIL PUBLIC SEWAGE IS AVAILABLE & SERVICING ANY RESIDENTIAL STRUCTURES CONSTRUCTED ON THESE BUILDING SITES. THIS EASEMENT SHALL BECOME NULL AND VOID UPON CONNECTION TO A PUBLIC SEWAGE SYSTEM.
 - DEED REFERENCE - 0655-390.
 - COORDINATES SHOWN HEREON ARE ASSUMED.
 - FOR FLAG OR PIPE STEM LOTS REFUSE COLLECTION, SNOW REMOVAL, ROAD MAINTENANCE ARE PROVIDED TO THE JUNCTION OF THE FLAG OR PIPE STEM AND THE ROAD RIGHT-OF-WAY LINE ONLY AND NOT ONTO THE FLAG OR PIPE STEM DRIVEWAY.
 - THE LOTS SHOWN HEREON COMPLY WITH THE MINIMUM OWNERSHIP WIDTH AND NOT AREAS REQUIRED BY THE MARYLAND STATE DEPARTMENT OF HEALTH & MENTAL HYGIENE.



VICINITY MAP
SCALE: 1" = 2000'

BUILDING DEVELOPMENT ON LOTS 1 AND 4 OF THIS SUBDIVISION SHALL NOT COMMENCE UNTIL THE EASEMENT ON SAID LOTS FOR SEWERAGE IS REMOVED.

OWNER:
BRUNO W. REICH
14189 HOWARD ROAD
DAYTON, MARYLAND
21036



AREA TABULATIONS

- TOTAL NO. OF LOTS: 4
- TOTAL AREA OF LOTS: 5.703 ACRES
- TOTAL AREA OF ROAD DEDICATION: 0.431 ACRES
- TOTAL AREA OF PLAT: 6.134 ACRES

SHARP ROAD

LAND DEDICATED TO HOWARD COUNTY FOR THE PURPOSE OF A PUBLIC ROAD
AREA = 13,774 SQ. FT. = 0.43 AC.

APPROVED: FOR PRIVATE WATER AND PRIVATE SEWERAGE SYSTEMS - HOWARD COUNTY HEALTH DEPARTMENT

Martin Spradlin, 10-12-77
COUNTY HEALTH OFFICER DATE

APPROVED: HOWARD CO OFFICE OF PLANNING & ZONING

Director DATE

APPROVED: FOR STORM SEWERAGE SYSTEMS AND PUBLIC ROAD

SURVEYOR'S CERTIFICATE

I HEREBY CERTIFY THAT THE FINAL PLAT SHOWN HEREON IS CORRECT, THAT IT IS A SUBDIVISION OF ALL THE LAND CONVEYED BY EDMOND H. MUSBOWE & MAE B. MUSBOWE, HIS WIFE, TO BRUNO WILLIAM REICH BY DEED DATED SEPTEMBER 25, 1975 AND RECORDED AMONG THE LAND RECORDS OF HOWARD COUNTY IN LIBER 0655-FOLD 390, AND THAT ALL MONUMENTS ARE IN PLACE AS SHOWN IN ACCORDANCE WITH THE UNNOTATED CODE OF MARYLAND AS AMENDED.

OWNERS DEDICATION

I, BRUNO W. REICH, OWNER OF THE PROPERTY SHOWN AND DESCRIBED HEREON, HEREBY ADOPT TO A PLAN OF SUBDIVISION AND IN CONSIDERATION OF THE APPROVAL OF THIS PLAT BY THE OFFICE OF PLANNING AND ZONING ESTABLISH THE MINIMUM BUILDING RESTRICTION LINES, AND GRANT UNTO HOWARD CO. MD. TO SUCCESSORS AND ASSIGNS THE RIGHT TO LAY, CONSTRUCT, MAINTAIN, SEWER, DRAINAGE DITCHES AND OTHER MUNICIPAL UTILITIES & SERVICES IN AND UNDER THE 2000' & 5' STRIP RIGHT-OF-WAY AND THE SPECIAL EASEMENT LINES SHOWN HEREON & DEDICATE TO PUBLIC USE THE STRIPS OF THE STRIPS AND 2000' & 5' STRIP PLANS AND OPEN SPACE HEREIN APPLICABLE FOR THE DOLLAR CONTRIBUTION HEREBY GRANT THE RIGHT OF HOWARD CO. TO ACQUIRE THE STRIP OF THE STRIPS OF THE STRIPS AND 2000' & 5' STRIP PLANS FROM OTHERS HEREIN DESCRIBED & TO LAY, CONSTRUCT, MAINTAIN, SEWER, DRAINAGE DITCHES AND OTHER MUNICIPAL UTILITIES & SERVICES IN AND UNDER THE 2000' & 5' STRIP PLANS AND OPEN SPACE HEREIN DESCRIBED & TO LAY, CONSTRUCT, MAINTAIN, SEWER, DRAINAGE DITCHES AND OTHER MUNICIPAL UTILITIES & SERVICES IN AND UNDER THE 2000' & 5' STRIP PLANS AND OPEN SPACE HEREIN DESCRIBED & TO LAY, CONSTRUCT, MAINTAIN, SEWER, DRAINAGE DITCHES AND OTHER MUNICIPAL UTILITIES & SERVICES IN AND UNDER THE 2000' & 5' STRIP PLANS AND OPEN SPACE HEREIN DESCRIBED.

JOHN C. MELLEMA SR., INC.
LAND SURVEYOR
3704 MOUNTAIN VIEW AVE. - BALTIMORE, MD. 21229

REICH
SUBDIVISION

ELECTOR DIST. 4011000 CON. 10011000