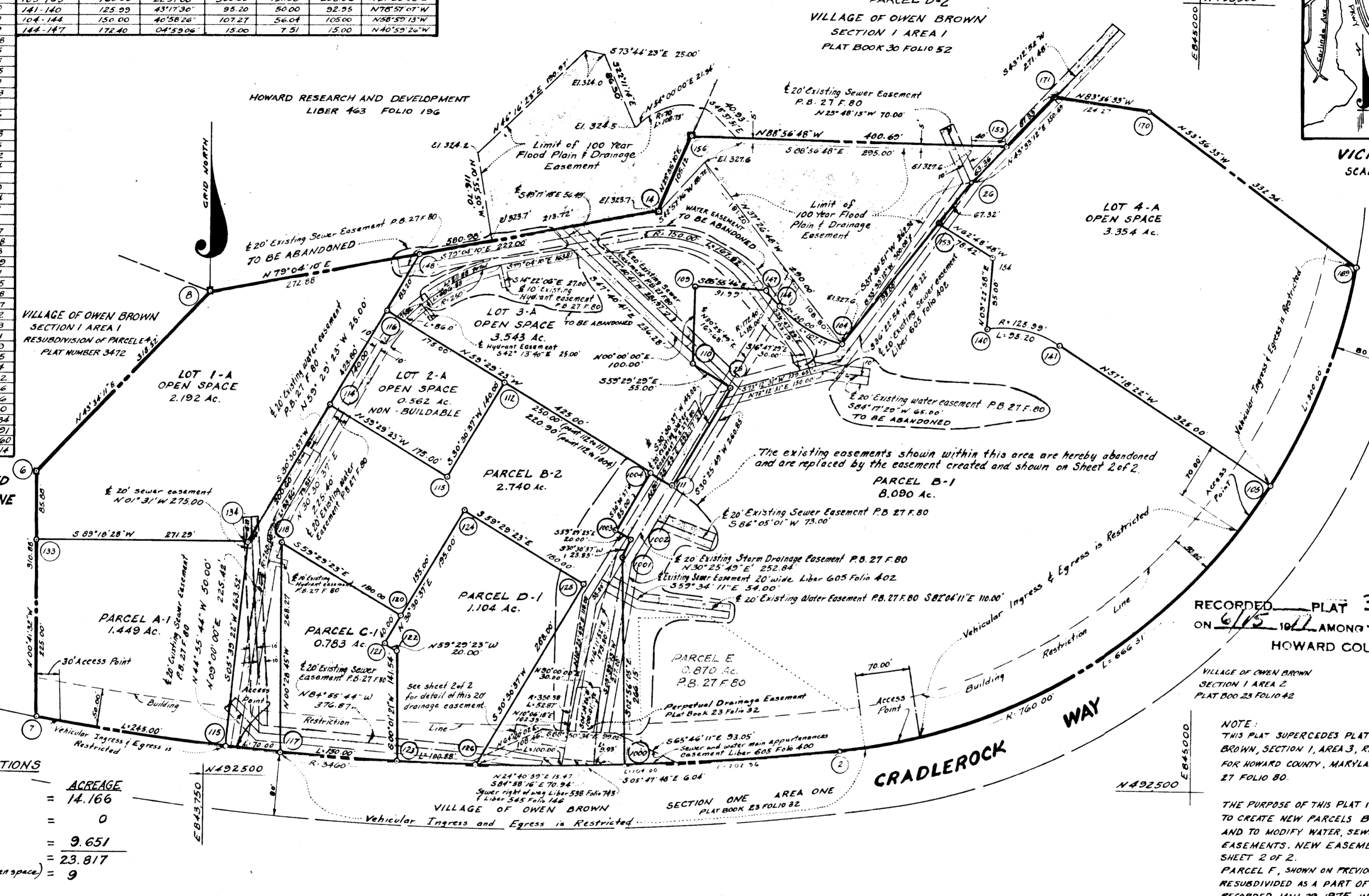
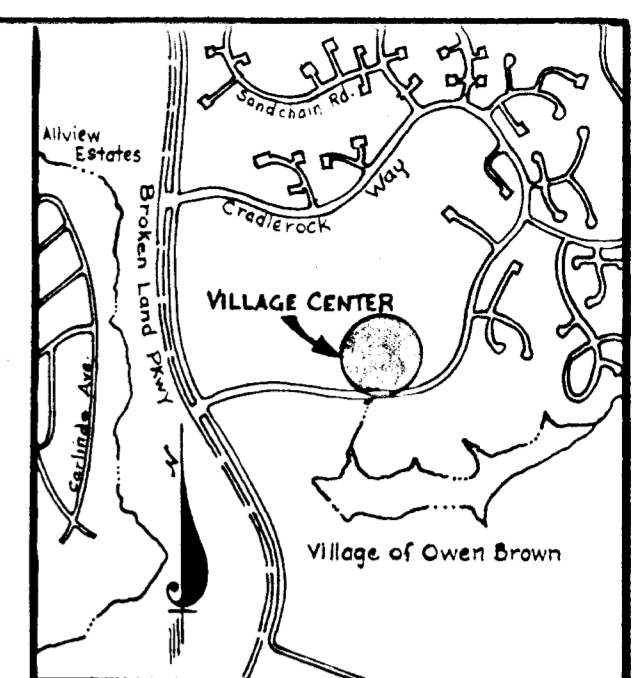


COORDINATE SCHEDULE			CURVE DATA						
POINT	NORTH	EAST	POINTS	RADIUS	Δ	ARC	TANGENT	CHORD	CHD. BRG.
2	2547.890	4250.860	7-2	340.00	17°04'38"	1031.27	519.40	1027.46	N88°32'10"W
4	3236.850	5214.480	7-169	760.00	78°50'58"	966.31	560.82	902.52	N46°50'00"E
6	2885.000	3520.000	7-115	340.00	04°03'25"	245.00	122.55	144.25	N82°01'31"W
7	2574.140	3523.755	115-117	340.00	01°09'33"	70.00	35.00	70.00	S 84°38'02"E
8	3115.778	3730.535	117-123	340.00	02°29'02"	150.00	75.01	149.99	S 86°21'20"E
9	3616.740	4692.710	123-126	340.00	01°40'14"	100.88	50.44	100.88	S 88°31'58"E
10	3570.291	4644.216	126-1200	340.00	03°14'28"	195.39	97.72	195.37	N88°00'52"E
12	3637.728	4483.757	1000-2	340.00	04°28'16"	270.00	135.07	269.93	N 85°09'38"E
14	3225.942	4309.971	2-105	760.00	50°13'57"	666.31	356.27	645.17	N57°48'36"E
20	3269.000	4709.000	105-140	760.00	22°37'00"	400.00	151.28	298.06	N 21°23'08"E
28	3005.000	4405.000	141-140	125.00	43°17'36"	95.20	50.00	92.95	N 78°57'07"W
103	3423.027	4856.000	104-144	150.00	40°58'26"	107.27	56.04	105.00	N 58°59'13"W
104	3060.976	4549.200	144-147	172.40	04°53'06"	15.00	7.51	15.00	N 40°59'26"W
105	2801.390	5086.878							
109	3132.923	4337.615							
110	3032.923	4337.615							
111	2880.077	4331.385							
112	3007.000	4116.000							
113	2886.385	4044.923							
114	2975.231	3894.154							
115	2540.199	3766.336							
116	3095.846	3965.231							
117	2533.613	3836.028							
118	2601.877	3833.765							
120	2710.492	3988.862							
121	2676.021	3968.554							
122	2665.677	3985.785							
123	2524.341	3985.725							
124	2644.031	4067.554							
125	2752.846	4222.631							
126	2521.758	4086.371							
133	2799.124	3521.037							
134	2802.401	3792.308							
140	3084.951	4732.143							
141	3067.139	4823.369							
144	3115.074	4459.211							
147	3126.393	4449.375							
148	3167.522	4007.468							
150	3147.849	5201.467							
151	3224.367	5096.372							
152	3278.015	5056.003							
153	3215.616	4667.991							
154	3179.786	4737.740							
155	3314.917	4752.655							
156	3322.284	4352.034							
169	3169.125	5205.562							
170	3365.092	4936.406							
171	3378.206	4812.826							
1000	2525.118	4281.910							
1001	2790.921	4268.284							
1002	2871.467	4280.391							
1003	2881.621	4288.160							
1004	2894.852	4306.314							

NOTE:  
 1. 4"x4"x36" Concrete Monument indicated thus  $\square$   
 2. Minimum building setback restrictions from property lines and the right-of-way of any public road or street to be in accordance with the Final Development Plan Criteria - Phase 150-A.  
 3. The lots or parcels shown on this plat are subject to the supplemental sewer-in-aid-of-construction charge created by Section 20-311A of the Howard County Code and to Executive Order No. 72-5.



COORDINATES ARE BASED ON MARYLAND STATE PLANE GRID SYSTEM.

TABULATIONS

TOTALS		ACREAGE
All lots/parcels	=	14.166
Right-of-way	=	0
Open Space	=	9.651
Total	=	23.817
Lots this plat (including open space)	=	9

RECEIVED  
 JUN 29 1977  
 BUREAU OF ENGINEERING

RECORDED PLAT 3718  
 ON 6/15/77 AMONG THE LAND RECORDS OF  
 HOWARD COUNTY, MD.

NOTE:  
 THIS PLAT SUPERCEDES PLAT ENTITLED VILLAGE OF OWEN BROWN, SECTION 1, AREA 3, RECORDED AMONG THE LAND RECORDS FOR HOWARD COUNTY, MARYLAND, ON JUNE 11, 1974, IN PLAT BOOK 27 FOLIO 80.  
 THE PURPOSE OF THIS PLAT IS TO ELIMINATE PARCEL E AND TO CREATE NEW PARCELS B-1 AND B-2, AS SHOWN HEREON, AND TO MODIFY WATER, SEWER, AND STORM DRAINAGE EASEMENTS. NEW EASEMENT CREATED IS SHOWN ON SHEET 2 OF 2.  
 PARCEL F, SHOWN ON PREVIOUSLY RECORDED PLAT WAS RESUBDIVIDED AS A PART OF PARCEL D-2 SHOWN ON PLAT RECORDED MAY 29, 1975 IN PLAT BOOK 30 FOLIO 52.

APPROVED: FOR PUBLIC WATER AND PUBLIC SEWERAGE SYSTEMS, HOWARD COUNTY HEALTH DEPARTMENT  
*Wynne Brooks* 6-8-77  
 COUNTY HEALTH OFFICER DATE

APPROVED: HOWARD COUNTY OFFICE OF PLANNING AND ZONING.  
*J. Howard A. Harris* 6-15-77  
 DIRECTOR DATE

APPROVED: FOR PUBLIC WATER AND PUBLIC SEWERAGE, STORM DRAINAGE SYSTEMS AND PUBLIC ROADS, HOWARD COUNTY DEPARTMENT OF PUBLIC WORKS.  
*W. J. K. ...* 6-6-77  
 DIRECTOR DATE

SURVEYOR'S CERTIFICATE  
 I hereby certify that the Final Plat shown hereon is correct; that it is a subdivision of part of the lands conveyed by C. Aileen Ames to The Howard Research and Development Corporation by deed dated December 13, 1966 and recorded in the Land Records of Howard County in Liber 463 Folio 196, and that all monuments are in place as shown, in accordance with the Annotated Code of Maryland, as amended.

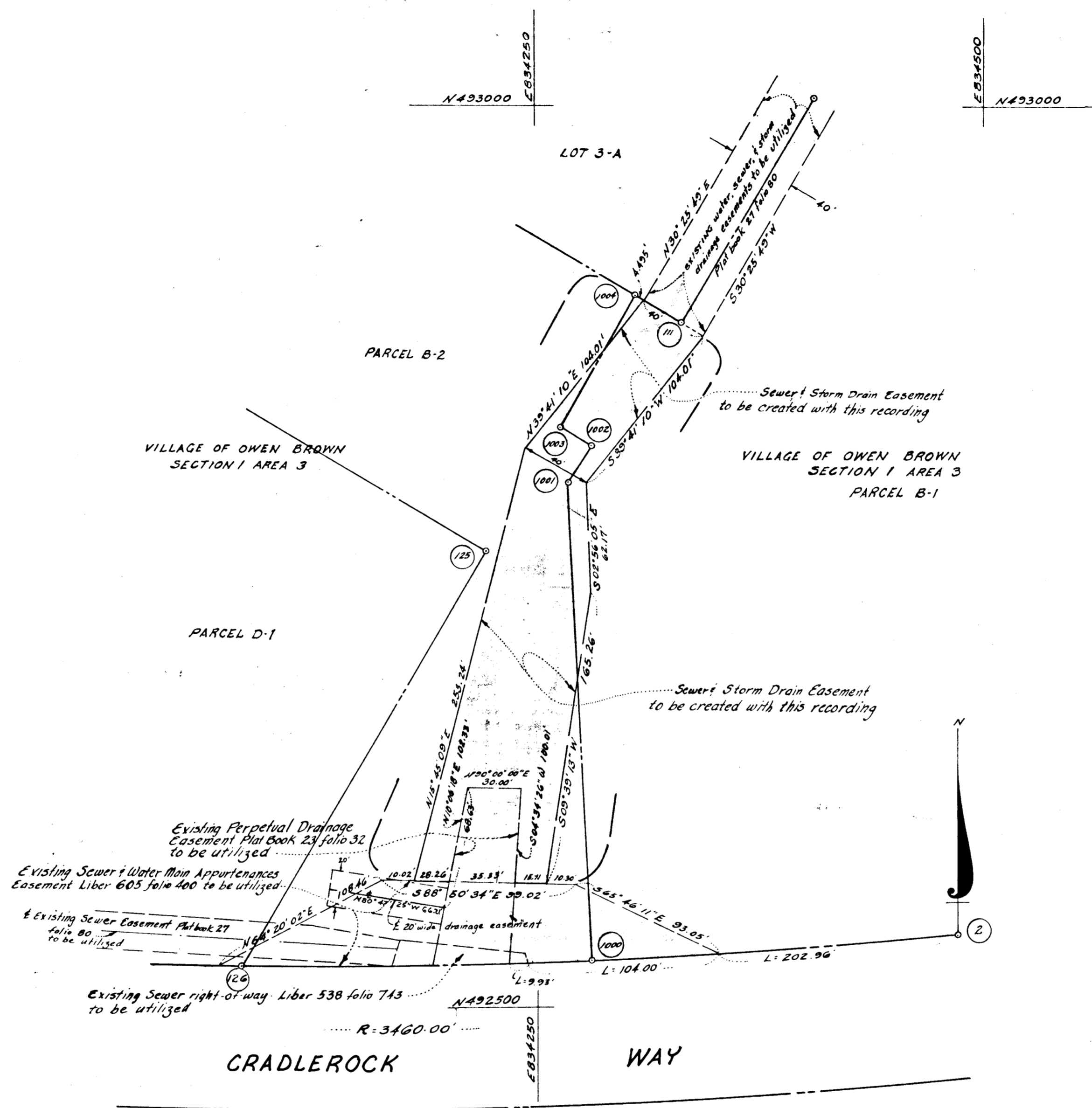
PROPERTY LINE SURVEYOR  
 by: *H. Richard Hoale* 12-14-76  
 H. RICHARD HOALE Date  
 REG. NO. 77  
 THE ROUSE COMPANY  
 COLUMBIA, MD. 21044

DEDICATION FOR CORPORATIONS  
 We, The Howard Research and Development Corporation, a Maryland Corporation by *Walter E. Woodford, Jr.* Authorized Agent and *Francis B. Hunter, Jr.* Assistant Secretary owners of the property shown and described hereon, hereby adopt this plan of subdivision, in consideration of the approval of this Final Plat by the Office of Planning and Zoning, establish the minimum building restriction lines and grant unto Howard County, Maryland, its successors and assigns, (1) the right to lay, construct and maintain sewers, drains, water pipes and other municipal utilities and services, in and under all roads and street right-of-ways and the specific easement areas shown hereon; (2) dedicate to public use the beds of streets and/or roads and floodplains and open space where applicable, and for One Dollar (\$1.00) consideration, hereby grant the right and option to Howard County to acquire the fee simple title to the beds of the streets and the roads and floodplains and open space where applicable; (3) that no building or similar structure of any kind shall be erected on or over the said easements and right-of-ways; and (4) it is further agreed that maintenance of all waterways, drainage easements and/or floodplains shown hereon are the responsibility of the property owner, its successors and assigns. Witness our hands this 18th day of October, 1976.

THE HOWARD RESEARCH AND DEVELOPMENT CORPORATION  
*Walter E. Woodford, Jr.* (Authorized Agent)  
*Francis B. Hunter, Jr.* (Assistant Secretary)

**COLUMBIA**  
**VILLAGE OF OWEN BROWN**  
 PARCELS A-1, B-1, B-2, C-1, D-1 and LOTS 1-A, 2-A, 3-A and 4-A  
 RESUBDIVISION OF PARCELS A THRU E and LOTS 1 THRU 4  
 SECTION 1  
 AREA 3  
 SHEET 1 of 2  
 6th Election District of Howard County, Md.  
 Scale: 1"=100' Date: May 5, 1977

F-77-56



THE EASEMENTS SHOWN HEREON ARE HEREBY CREATED TO REPLACE EASEMENTS SHOWN WITHIN THE SAME EXTREMITIES ON SHEET 1 of 2 AS BEING ABANDONED.

RECORDED 6/15 PLAT 3719  
 ON 10/12 1977 AMONG THE LAND RECORDS OF  
 HOWARD COUNTY, MD.

APPROVED: FOR PUBLIC WATER AND PUBLIC SEWERAGE SYSTEMS, HOWARD COUNTY HEALTH DEPARTMENT  
*Joseph A. Boggs* 6-8-77  
 COUNTY HEALTH OFFICER DATE

APPROVED: HOWARD COUNTY OFFICE OF PLANNING AND ZONING.  
*Howard H. Davis* 6-15-77  
 DIRECTOR DATE

APPROVED: FOR PUBLIC WATER AND PUBLIC SEWERAGE, STORM DRAINAGE SYSTEMS AND PUBLIC ROADS. HOWARD COUNTY DEPARTMENT OF PUBLIC WORKS.  
*W. H. [Signature]* 6-6-77  
 DIRECTOR DATE

SURVEYOR'S CERTIFICATE  
 I hereby certify that the Final Plat shown hereon is correct; that it is a subdivision of part of the lands conveyed by C. Aileen Ames to The Howard Research and Development Corporation by deed dated December 13, 1966 and recorded in the Land Records of Howard County in Liber 463 Folio 196, and that all monuments are in place as shown, in accordance with the Annotated Code of Maryland, as amended.

PROPERTY LINE SURVEYOR  
 by: *J. Richard Hoyle* 10-14-76  
 J. Richard Hoyle Date  
 REG. NO. 77  
 THE ROUSE COMPANY  
 COLUMBIA, MD. 21044

DEDICATION FOR CORPORATIONS  
 We, The Howard Research and Development Corporation, a Maryland Corporation by Walter E. Woodford, Jr. Authorized Agent and Francis R. Hunter, Jr. Assistant Secretary owners of the property shown and described hereon, hereby adopt this plan of subdivision, in consideration of the approval of this Final Plat by the Office of Planning and Zoning, establish the minimum building restriction lines and grant unto Howard County, Maryland, its successors and assigns, (1) the right to lay, construct and maintain sewers, drains, water pipes and other municipal utilities and services, in and under all roads and street right-of-ways and the specific easement areas shown hereon; (2) dedicate to public use the beds of streets and/or roads and floodplains and open space where applicable, and for one Dollar (\$1.00) consideration, hereby grant the right and option to Howard County to acquire the fee simple title to the beds of the streets and the roads and floodplains and open space where applicable; (3) that no building or similar structure of any kind shall be erected on or over the said easements and right-of-ways; and (4) it is further agreed that maintenance of all waterways, drainage easements and for flood plains shown hereon are the responsibility of the property owner, its successors and assigns. Witness our hands this 18th day of October, 1976.

THE HOWARD RESEARCH AND DEVELOPMENT CORPORATION  
*Walter E. Woodford, Jr.* (Authorized Agent)  
*Francis R. Hunter, Jr.* (Assistant Secretary)

**COLUMBIA**  
**VILLAGE OF OWEN BROWN**  
 PARCELS A-1, B-1, B-2, C-1, D-1 and LOTS 1-A, 2-A, 3-A and 4-A  
 RESUBDIVISION OF PARCELS A THRU E and LOTS 1 THRU 4 SECTION 1  
 AREA 3  
 SHEET 2 of 2  
 6<sup>TH</sup> Election District of Howard County, MD  
 Scale: 1"=50' Date: 10-6-76

F. 77.52