

Blk	Lot	Radius	Δ	ARC	Tangent	Chord	Bearing	Point No.
E	19	200.00	11° 20' 00"	33.56	33.56	33.50	S43°40'00"E	103-124
E	20	200.00	22° 56' 00"	80.05	40.57	79.52	S60°48'00"E	124-135
E	21	200.00	26° 38' 00"	92.97	47.34	92.13	S85°35'00"E	135-137
E	22	200.00	21° 58' 00"	76.68	39.82	76.21	N70°07'00"E	137-138
E	23	200.00	23° 08' 00"	80.75	40.33	80.20	N47°34'00"E	138-146
E	Tot	200.00	106° 00' 00"	370.01	265.41	319.45	N89°00'00"E	109-146
E	21	500.00	10° 05' 18"	88.03	44.13	37.22	S46°44' 29"W	139-119
E	22	500.00	09° 57' 52"	86.26	43.53	36.85	S56°46' 04"W	117-139
E	Tot	500.00	20° 03' 10"	174.29	87.66	74.07	S51°43' 25"W	117-119
E	23	400.00	21° 19' 20"	148.86	75.30	74.00	S51°05' 20"W	147-116
E	Tot	25.00	86° 24' 35"	37.70	23.48	34.23	S79°12' 17.5"W	154-166
G	6	859.04	04° 16' 26"	67.06	33.55	67.05	S08°03'47"W	125-176
G	8	859.04	04° 16' 26"	67.06	33.55	67.05	S08°03'47"W	176-178
G	323.60	07° 12' 00"	40.67	20.36	40.64	40.64	S06°36'00"W	99-102
G	323.60	16° 11' 35"	31.45	16.03	31.15	31.15	S05°05'47.5"E	102-105
G	323.60	15° 58' 35"	30.23	15.41	30.23	30.23	S21°10' 52.5"E	105-106
G	323.60	11° 52' 20"	67.05	33.55	66.23	66.23	S35°06' 20"E	106-125
G	Tot	323.60	51° 14' 30"	282.40	155.19	279.86	S15°25' 15"E	99-125
G	11	25.00	77° 02' 30"	33.62	19.90	31.14	S02°31' 15"E	125-127
G	12	150.00	106° 00' 00"	277.51	199.08	239.89	S89°00'00"W	25-91
G	16	849.04	04° 16' 26"	63.33	31.68	63.32	N08°03'47"E	182-194
G	17	849.04	02° 13' 15"	36.78	18.39	36.78	N07°02' 11.5"E	128-182
G	Tot	849.04	02° 03' 11"	34.01	17.01	34.01	N05°10' 24.5"E	180-182
G	18	273.60	43° 43' 24"	208.79	109.77	203.78	N11°39' 42"W	107-173
G	Tot	273.60	24° 01' 01"	114.92	58.32	114.08	S45°33' 24.5"E	102-107
G	Tot	273.60	67° 47' 25"	323.71	183.82	305.16	N23°41' 42.5"W	102-173
K	17	12,634.65	13,353.13	130	13,322.33	13,632.64		
K	19	12,665.43	13,392.53	141	12,924.00	13,926.74		
K	20	12,779.33	13,538.31	142	12,832.99	13,922.00		
K	21	12,938.54	13,563.57	144	13,249.88	14,041.03		
K	21	12,546.66	13,485.32	146	12,521.45	13,765.33		
K	25	12,550.84	13,724.88	147	12,439.63	13,911.96		
K	29	12,954.82	13,723.99	164	12,624.32	13,862.04		
K	107	12,746.41	13,814.39	166	12,617.91	13,835.41		
K	102	12,513.87	13,445.92	173	12,945.96	13,773.20		
K	116	12,346.67	13,796.80	176	13,229.43	13,770.86		
K	117	12,280.41	13,673.48	178	13,163.04	13,761.46		
K	112	12,172.56	13,536.80	180	13,154.19	13,810.67		
K	120	12,192.51	13,514.40	182	13,224.27	13,820.60		
K	121	12,324.20	13,321.34	192	12,666.53	13,895.84		
K	122	12,501.50	13,182.82	194	13,286.96	13,829.48		
K	125	12,685.04	13,798.41	195	13,225.81	13,780.27		
K	127	12,653.93	13,799.78					

No	NORTH	EAST	No	NORTH	EAST
17	12,634.65	13,353.13	130	13,322.33	13,632.64
19	12,665.43	13,392.53	141	12,924.00	13,926.74
20	12,779.33	13,538.31	142	12,832.99	13,922.00
21	12,938.54	13,563.57	144	13,249.88	14,041.03
21	12,546.66	13,485.32	146	12,521.45	13,765.33
25	12,550.84	13,724.88	147	12,439.63	13,911.96
29	12,954.82	13,723.99	164	12,624.32	13,862.04
107	12,746.41	13,814.39	166	12,617.91	13,835.41
102	12,513.87	13,445.92	173	12,945.96	13,773.20
116	12,346.67	13,796.80	176	13,229.43	13,770.86
117	12,280.41	13,673.48	178	13,163.04	13,761.46
112	12,172.56	13,536.80	180	13,154.19	13,810.67
120	12,192.51	13,514.40	182	13,224.27	13,820.60
121	12,324.20	13,321.34	192	12,666.53	13,895.84
122	12,501.50	13,182.82	194	13,286.96	13,829.48
125	12,685.04	13,798.41	195	13,225.81	13,780.27
127	12,653.93	13,799.78			

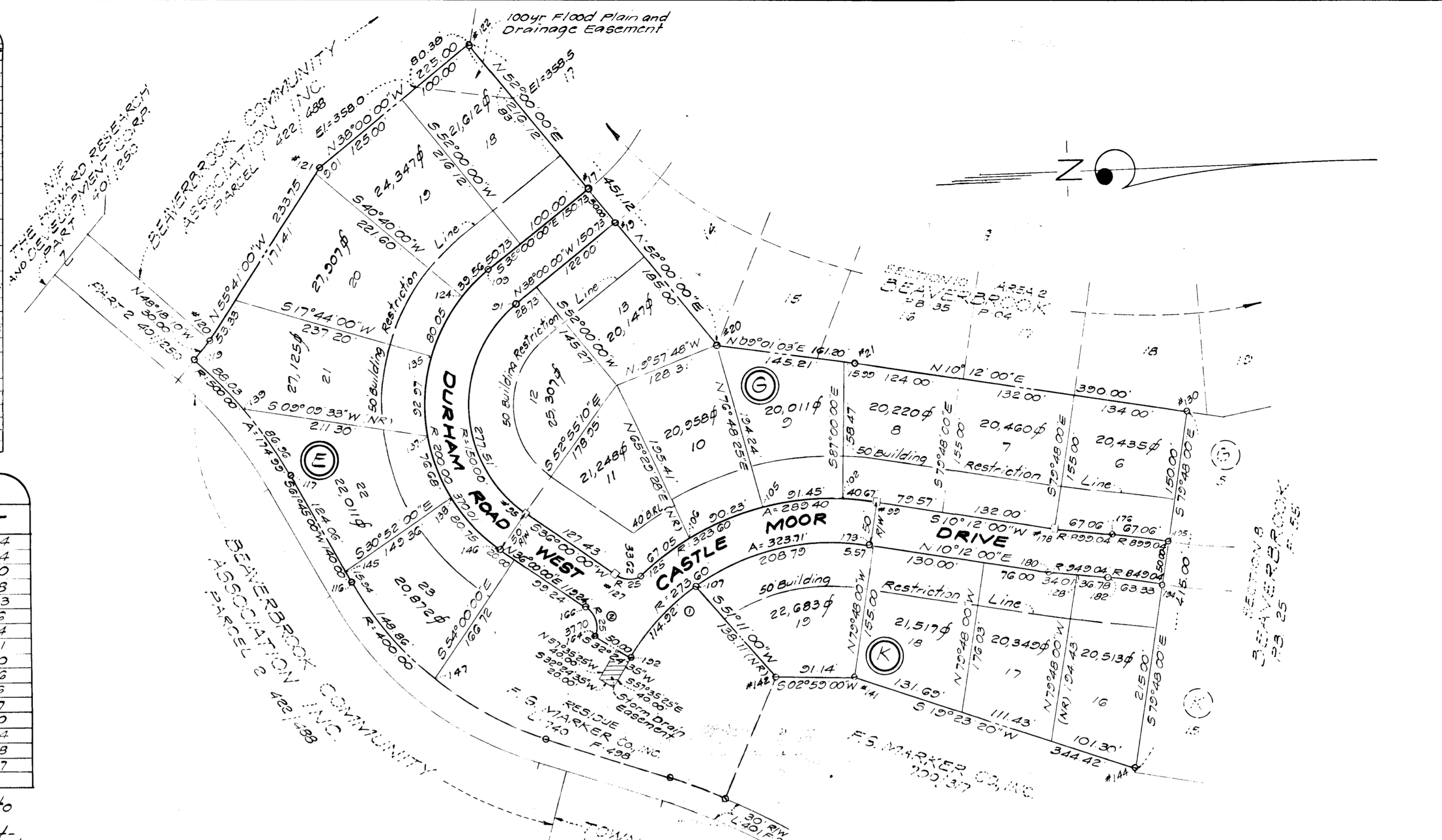
"The lots or parcels shown on this plat are subject to the supplemental sewer in-aid-of-construction charges created by Executive Order No. 72-3-est- establishment of supplemental sewer in-aid-of-construction charges."

"Maintenance of all storm drains and/or drainage easements shown hereon are the responsibility of the property owner, its successors and assigns."

Total No of Lots = 18
 Total Area of Lots = 9.131 Acres
 Total Area of Roadways = 1.518 Acres
 Total Plat Area = 10.649 Acres

OWNER & DEVELOPER
F. G. MARKER CO., INC.
 5900 PRINCESS GARDENS PARKWAY
 LANHAM MARYLAND
 20801

BEAVERBROOK
 SECTION 10 AREA 3
 FIFTH ELECTION DISTRICT
 HOWARD COUNTY MARYLAND
 SCALE 1"=100'
 JANUARY 20, 1977



APPROVED: For Public Water and Public Sewerage Systems, Howard County Health Dept.

[Signature] 6-1-77
 COUNTY HEALTH OFFICER DATE

APPROVED: Howard County Office of Planning and Zoning

[Signature] 6-2-77
 DIRECTOR DATE

APPROVED: For Public Water and Public Sewerage, Storm Drainage Systems and Public Roads, Howard County Department of Public Works

[Signature] 6-2-77
 DIRECTOR DATE

OWNER'S CERTIFICATE

We, F.G. Marker Co. Inc., a Maryland Corporation by F.G. Marker, President and Theresa A. Marker, Secretary-Treasurer, owners of the property shown and described hereon, hereby adopt this plan of subdivision, and in consideration of the approval of this Final Plat by the Office of Planning and Zoning, establish the minimum building restriction lines and grant unto Howard County, Maryland, its successors and assigns, (1) the right to lay, construct and maintain sewers, drains, water pipes and other municipal utilities and services, in and under all roads and street right-of-ways and the specific easement areas shown hereon; (2) dedicate to public use the beds of the streets and/or roads and flood plains and open space where applicable; and for One Dollar (\$1.00) consideration, hereby grant the right and option to Howard County to acquire the fee simple title to the beds of the streets and/or roads and flood plains and open space where applicable; (3) that no building or similar structure of any kind shall be erected on or over the said easements and right-of-ways; and (4) it is further agreed that maintenance of all waterways, drainage easements and flood plains shown hereon are the responsibility of the property owner, its successors and assigns. Witness our hand and seals this 21st day of February, 1977.

Attest: *[Signature]* Theresa A. Marker
 THERESA A. MARKER, SECRETARY-TREASURER

BY: *[Signature]* F.G. Marker
 F.G. MARKER, PRESIDENT

SURVEYOR'S CERTIFICATE

I hereby certify that the final plat shown hereon is correct; that it is a subdivision of part of the land conveyed by Del Haven Builders, Inc. to F.G. Marker Co. Inc. by deed dated October 3, 1975 and recorded in the Land Records of Howard County, Maryland in Liber 740 Folio 498. I further certify that all monuments are in place as shown, in accordance with the annotated code of Maryland as amended.

1-20-77
 DATE

[Signature]
 W. STANLEY MACHEN
 REGISTERED LAND SURVEYOR
 MD. No. 2047

SURVEYING

PLANNING

W. STANLEY MACHEN

4328 FARRAGUT STREET

HYATTSVILLE

MARYLAND

20781

TEL. 864-5115