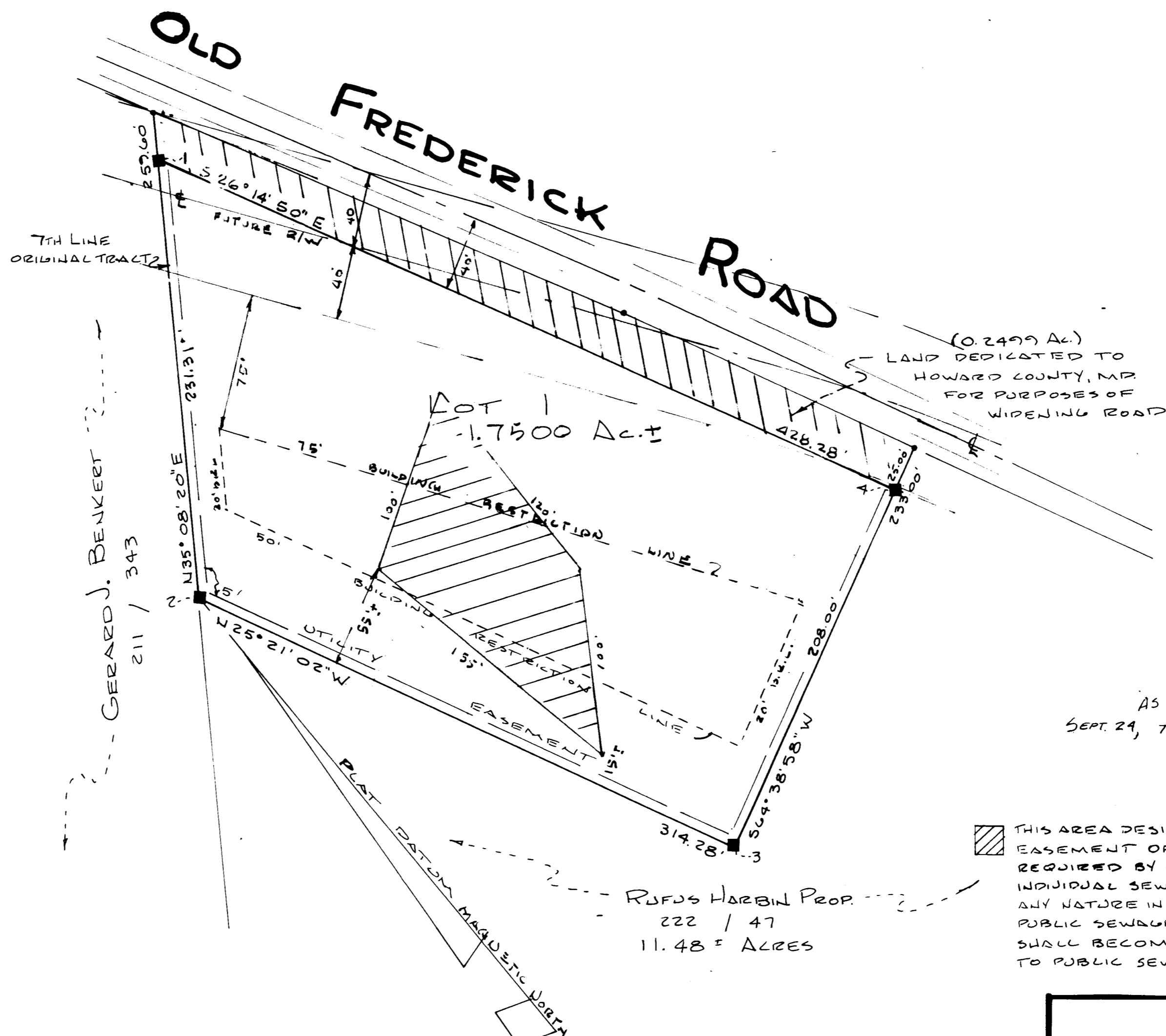


NOTE:
THIS PLAT SUBJECT TO
V.P.-76-95



AS #3528
SEPT. 24, 76

THIS AREA DESIGNATES A PRIVATE SEWERAGE EASEMENT OF APPROXIMATELY 10,000^{sq} ft AS REQUIRED BY MD. STATE HEALTH DEPT. FOR INDIVIDUAL SEWERAGE DISPOSAL. IMPROVEMENTS OF ANY NATURE IN THIS AREA ARE RESTRICTED UNTIL PUBLIC SEWERAGE IS AVAILABLE. THIS EASEMENT SHALL BECOME NULL AND VOID UPON CONNECTION TO PUBLIC SEWERAGE SYSTEM.

NOTES
1. THE LOTS SHOWN HEREON COMPLY WITH THE MINIMUM OWNERSHIP WIDTH AND LOT AREA AS REQUIRED BY THE MARYLAND STATE DEPARTMENT OF HEALTH REG
2. COORDINATES ASSUMED
3. TOT. NO. OF LOTS - 1
AREA OF LOT - 1.750 AC.
DED. AREA - 0.250 AC.
TOT. AREA - 2.000 AC.

LOT - 1
HARBIN ACRES
SITUATED ON OLD FREDERICK ROAD
4TH ELECTION DISTRICT
HOWARD COUNTY, MARYLAND
SCALE: 1" = 50' MAR. 1976

CO-ORDINATES		
NO.	NORTH	EAST
1	4977.1600	4984.3000
2	4788.0014	4851.1671
3	4503.7847	4785.7277
4	4593.0413	5173.6784

APPROVED FOR PRIVATE WATER AND PRIVATE SEWERAGE: HOWARD COUNTY, HEALTH DEPT.
COUNTY HEALTH OFFICER _____ DATE _____
APPROVED: HOWARD COUNTY OFFICE OF PLANNING AND ZONING
DIRECTOR _____ DATE _____
APPROVED FOR STORM DRAINAGE SYSTEMS AND PUBLIC ROADS, HOWARD COUNTY DEPT. OF PUBLIC WORKS.
520
503

OWNERS' STATEMENT
WE RUFUS & BETTY E. HARBIN, HIS WIFE, OWNERS OF THE PROPERTY SHOWN AND DESCRIBED HEREON, ADOPT THIS PLAN OF SUBDIVISION AND IN CONSIDERATION OF THE APPROVAL OF THIS FINAL PLAT BY THE OFFICE OF PLANNING AND ZONING, ESTABLISH THE MINIMUM BUILDING RESTRICTION LINES AND DEDICATE THE STREETS, ALLEYS, WALKS AND OTHER EASEMENTS, WIDENING STRIPS AND FLOOD PLAINS AND OPEN SPACE WHERE APPLICABLE, TO PUBLIC USE ALL EASEMENTS OR RIGHT-OF-WAY AFFECTING THE PROPERTY ARE INCLUDED IN THIS PLAN OF SUBDIVISION.
WITNESS OUR HANDS AND SEAL THIS 1 DAY OF JUNE 1976

SURVEYOR'S CERTIFICATE
I HEREBY CERTIFY THAT THE FINAL PLAT SHOWN HEREON IS CORRECT; THAT IT IS A SUBDIVISION OF PART OF THE LAND CONVEYED BY ROBERT H. & MARJORIE A. BARRETT TO RUFUS & BETTY E. HARBIN BY DEED DATED 6-OCT-50 AND RECORDED AMONG THE LAND RECORDS OF HOWARD COUNTY IN LIBER 222 AT FOLIO 47 AND THAT ALL MONUMENTS ARE IN PLACE AS SHOWN IN ACCORDANCE WITH THE ANNOTATED CODE OF MARYLAND AS AMENDED OR ENACTED

RECEIVED
OCT 11 1976
BUREAU OF ENGINEERING
H.J. RUFUS ASSOCIATES
ENGINEERS - SURVEYORS
201 JOSEPH SQUARE
COLUMBIA, MD 21044