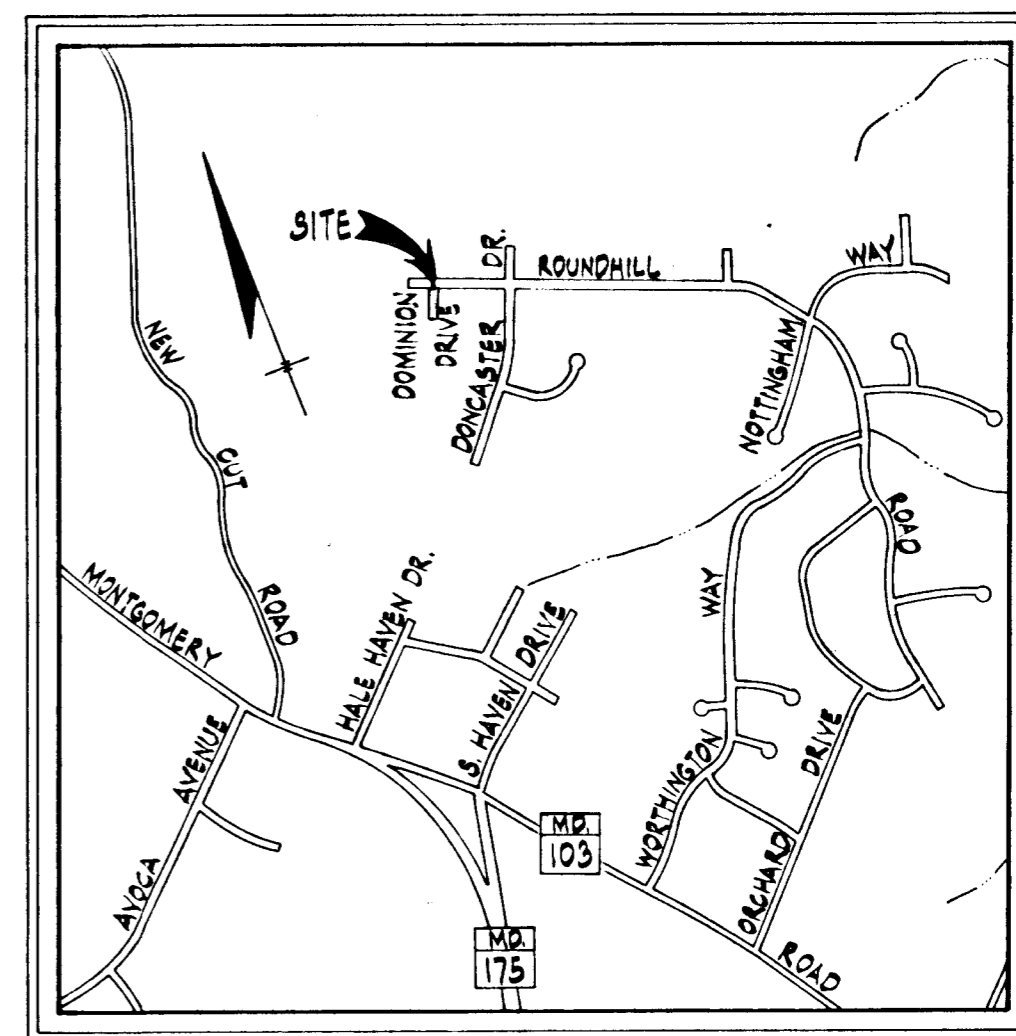
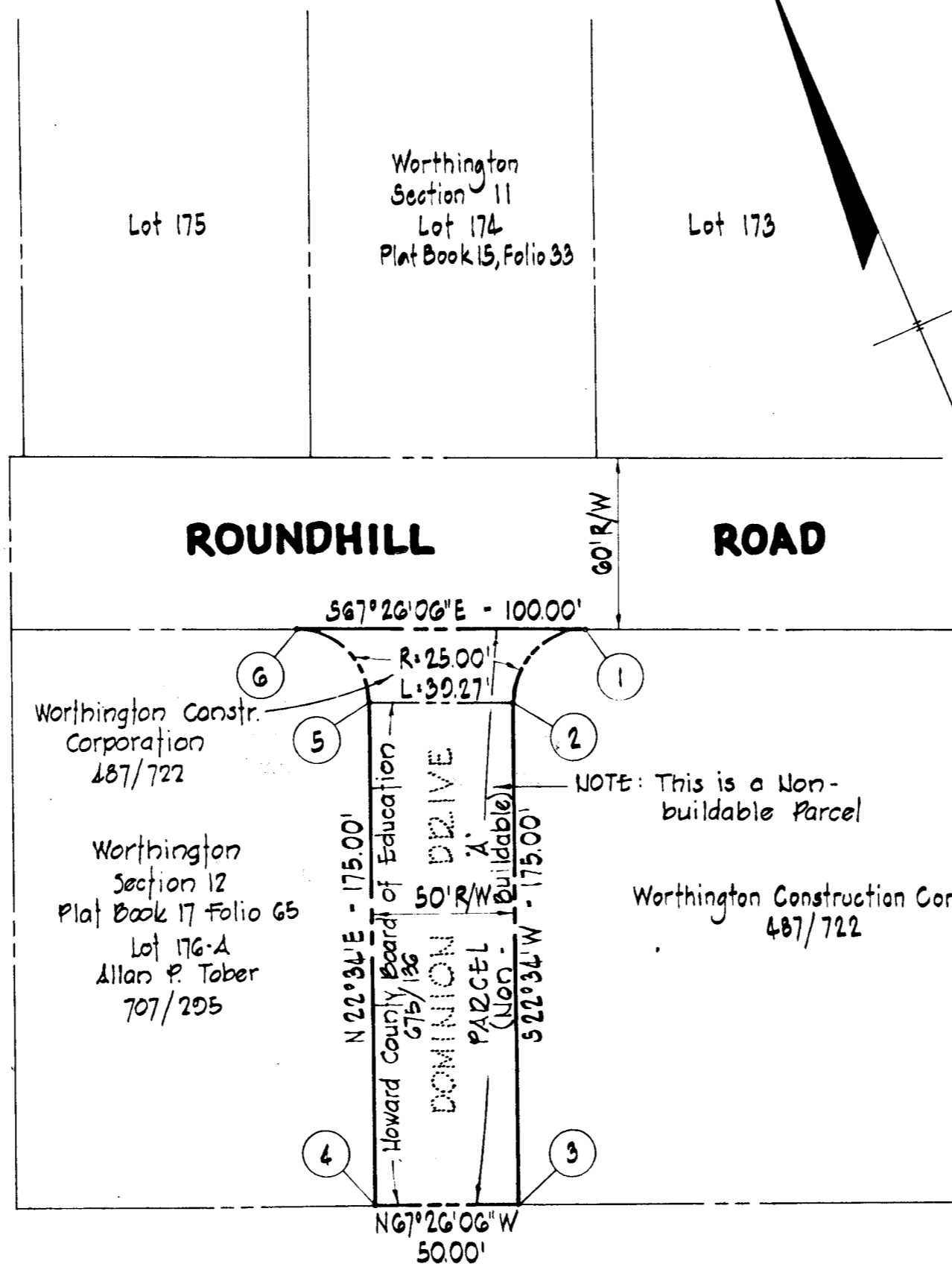
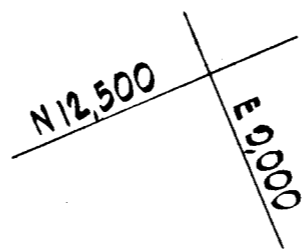
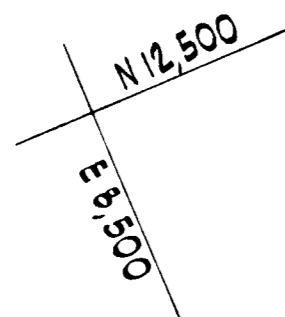


COORDINATE TABLE					
NO.	NORTH	EAST	NO.	NORTH	EAST
1	12,265.77	8,815.49	4	12,109.86	8,669.49
2	12,252.28	8,782.82	5	12,271.46	8,736.65
3	12,090.68	8,715.66	6	12,304.14	8,723.15

TABLE OF CURVE DATA					
CURVE	DELTA	RADIUS	LENGTH	CHORD BEARING	DISTANCE
1-2	89° 59' 54"	25.00'	39.27	S 67° 33' 57" W	35.35
5-6	90° 00' 06"	25.00'	39.27	N 22° 26' 03" W	35.36

NOTE: The origin of the coordinates shown hereon is based on the plat of Section 12, Worthington, recorded in Plat Book 12 at Folio 65.



VICINITY MAP
Scale: 1" = 1200'

RECORDED PLAT 3458
ON 10/15/75 AMONG THE LAND RECORDS OF
HOWARD COUNTY, MD.

NOTE:
The purpose of this plat is to remove the previously dedicated Right-of-Way for Dominion Drive from public use.

REVISED PLAT OF
PART OF SECTION 11 AND PART OF SECTION 12

Howard County Board of Education
675/136

WORTHINGTON RECEIVED
JUN 1 1976

**RIGHT OF WAY ABANDONMENT
DOMINION DRIVE**
SECOND ELECTION DISTRICT HOWARD COUNTY, MD
December 10, 1975 Scale: 1" = 50'

BUREAU OF ENGINEERING

AREA OF PARCEL 10,267.88[±] = 0.236 Ac.±
TOTAL AREA OF PLAT 10,267.88[±] = 0.236 Ac.±

OWNERS
WORTHINGTON CONST. CO. BOARD OF EDUCATION OF HOWARD COUNTY
Suburbia Building 5602 Baltimore National Pike Route 82
Baltimore, Maryland 21228 Clarksville, Maryland 21029

APPROVED: Howard County Health Department.
[Signature]
County Health Officer Date
APPROVED: Howard County Office of Planning and Zoning
[Signature] 5-17-76
Director Date
APPROVED: Howard County Department of Public Works.
[Signature] 4-27-76
Director Date

OWNERS'S CERTIFICATE
We, Worthington Construction Corporation a body corporate of the State of Maryland, and Board of Education of Howard County, a body corporate and politic, owners of the property shown and described hereon, hereby adopt this plan of subdivision.
All easement or rights-of-way affecting the property are included in this plan of subdivision.
Witness our hands this 26 day of January, 1976.
Jan 26, 1976 *[Signature]*
Date Worthington Construction Corporation
Jan 21, 1976 *[Signature]*
Date Board of Education of Howard County

SURVEYOR'S & ENGINEER'S CERTIFICATE
I hereby certify that the Final Plat shown hereon is correct, that it is a subdivision of part of the lands conveyed by Worthington Construction Corporation to the Board of Education of Howard County by deed dated March 26, 1974 and recorded in the Land Records of Howard County, in Liber 675, at Folio 136, and part of the lands conveyed by Charles A. Lotz and Margaret E. Lotz, his wife, to Worthington Construction Corporation by deed date May 16, 1968 and recorded in the Land Records of Howard County in Liber 437, Folio 722, and that all monuments are in place as shown, in accordance with the Annotated Code of Maryland, as amended.
2/2/76 *[Signature]*
Date William G. Rasch, II, Reg. No. 4575

PURDUM AND JESCHKE
CONSULTING ENGINEERS LAND SURVEYORS
1023 N. Calvert Street
Baltimore, Maryland 21202



#104