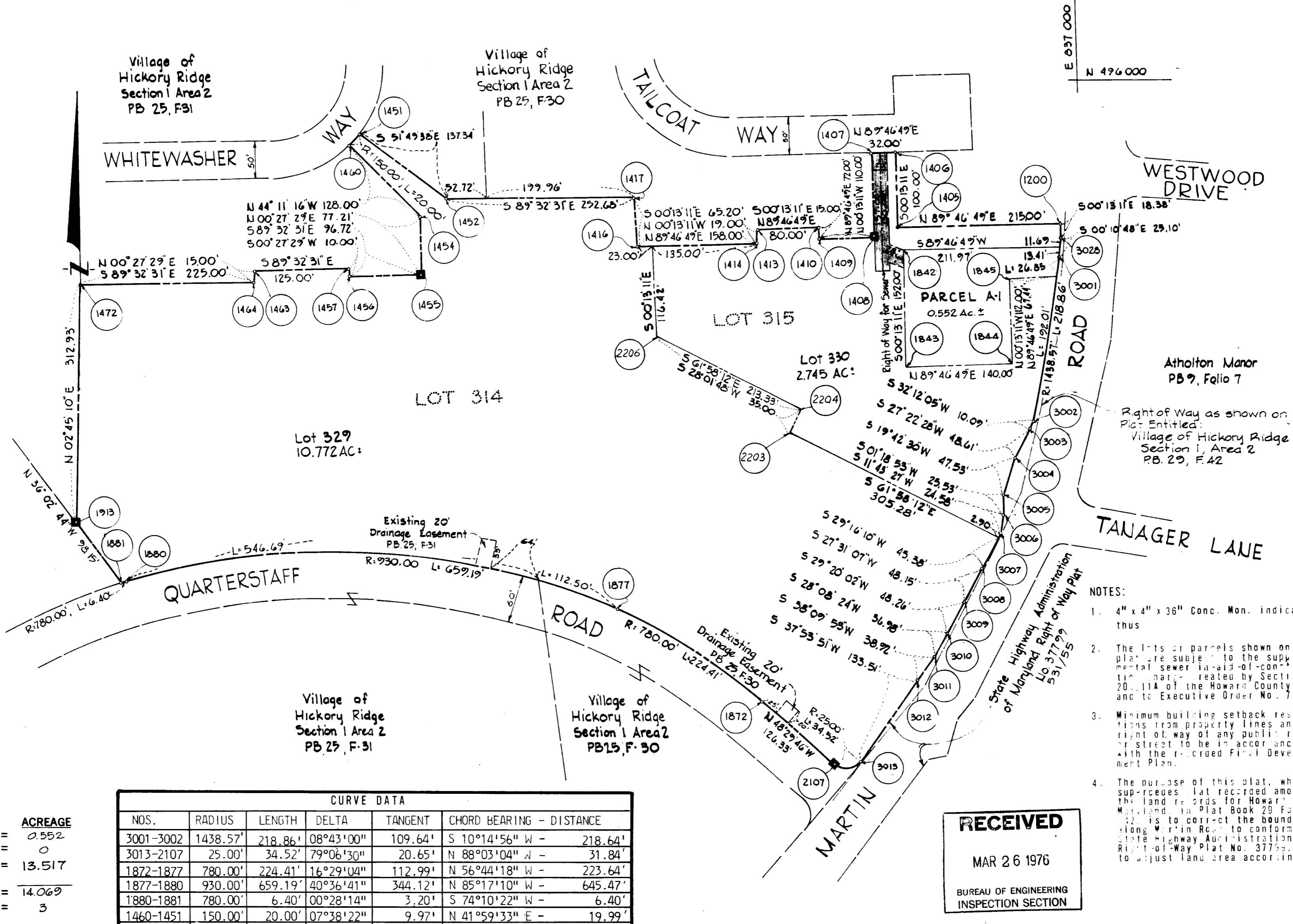
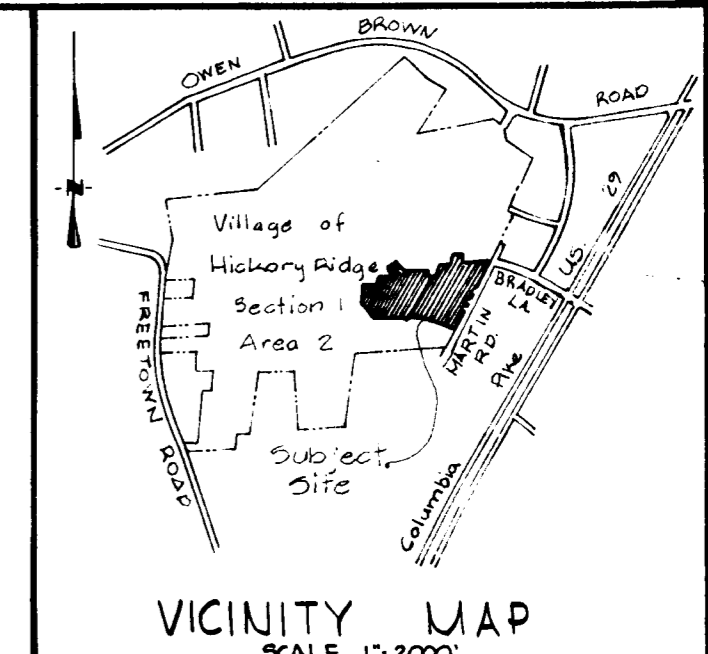


COLUMBIA

ALL COORDINATES ARE BASED ON THE MARYLAND STATE GRID SYSTEM



COORDINATES		
NO.	NORTH	EAST
1200	495 815.63	836 971.95
1405	495 814.81	836 756.95
1406	495 914.80	836 756.57
1407	495 914.68	836 724.57
1408	495 804.68	836 724.99
1409	495 804.41	836 652.99
1410	495 819.41	836 652.93
1413	495 819.10	836 572.93
1414	495 800.10	836 573.01
1416	495 799.49	836 415.01
1417	495 864.70	836 414.76
1451	495 951.60	836 054.12
1452	495 866.72	836 162.09
1454	495 844.96	836 129.96
1455	495 767.75	836 129.35
1456	495 768.52	836 032.62
1457	495 778.52	836 032.70
1460	495 936.74	836 040.74
1463	495 779.52	835 907.71
1464	495 764.52	835 907.59
1472	495 766.32	835 682.60
1872	495 200.44	836 561.77
1877	495 323.10	836 374.77
1880	495 376.14	835 731.48
1881	495 374.40	835 725.32
1913	495 453.75	835 667.57
2107	495 116.72	836 656.39
2203	495 552.02	836 610.31
2204	495 582.92	836 626.76
2206	495 683.17	836 438.45
3001	495 772.29	836 969.44
3002	495 557.13	836 930.54
3003	495 548.59	836 925.16
3004	495 505.42	836 902.81
3005	495 460.68	836 886.78
3006	495 435.16	836 886.20
3007	495 411.08	836 881.20
3008	495 368.97	836 857.60
3009	495 326.27	836 835.35
3010	495 284.20	836 811.71
3011	495 251.59	836 794.27
3012	495 220.99	836 770.22
3013	495 115.64	836 688.21
3028	495 797.25	836 972.02
1842	495 784.81	836 758.85
1843	495 632.81	836 759.43
1844	495 633.35	836 899.43

- NOTES:
- 4" x 4" x 36" Conc. Mon. indicated thus
 - The lots or parcels shown on this plat are subject to the supplemental sewer and/or gas easement as created by Section 20.11A of the Howard County Code and to Executive Order No. 72-9.
 - Minimum building setback restrictions from property lines and the right of way of any public road or street to be in accordance with the recorded Final Development Plan.
 - The purpose of this plat, which supersedes that recorded among the land records for Howard County, Maryland, in Plat Book 29 Folio 22, is to correct the boundaries along Martin Road to conform to State Highway Administration Right-of-Way Plat No. 37799 and to adjust land area accordingly.

RECEIVED
MAR 26 1976
BUREAU OF ENGINEERING
INSPECTION SECTION

TABULATIONS

PARCEL 'A'	ACREAGE
Parcel 'A'	0.552
LOTS 329 & 330	13.517
Total	14.069
LOTS & PARCELS - THIS PLAT	3

CURVE DATA

NOS.	RADIUS	LENGTH	DELTA	TANGENT	CHORD BEARING - DISTANCE
3001-3002	1438.57'	218.86'	08°43'00"	109.64'	S 10°14'56" W - 218.64'
3013-2107	25.00'	34.52'	79°06'30"	20.65'	N 88°03'04" W - 31.84'
1872-1877	780.00'	224.41'	16°29'04"	112.99'	N 56°44'18" W - 223.64'
1877-1880	930.00'	659.19'	40°36'41"	344.12'	N 85°17'10" W - 645.47'
1880-1881	780.00'	6.40'	00°28'14"	3.20'	S 74°10'22" W - 6.40'
1460-1451	150.00'	20.00'	07°38'22"	9.97'	N 41°59'33" E - 19.99'

APPROVED: FOR PUBLIC WATER AND PUBLIC SEWERAGE SYSTEMS, HOWARD COUNTY HEALTH DEPARTMENT.
[Signature]
COUNTY HEALTH OFFICER DATE

APPROVED: HOWARD COUNTY OFFICE OF PLANNING AND ZONING.
[Signature]
DIRECTOR DATE

APPROVED: FOR PUBLIC WATER AND PUBLIC SEWERAGE, STORM DRAINAGE SYSTEMS AND PUBLIC ROADS. HOWARD COUNTY DEPARTMENT OF PUBLIC WORKS.
[Signature]
DIRECTOR DATE

SURVEYOR'S, ENGINEER'S and OWNER'S CERTIFICATES

The undersigned, owner of the property shown on this Plat, grants unto, (1) Howard County, Maryland, its successors and assigns, the right to lay, construct and maintain water and sewer mains and laterals therefor in and under all road and street rights-of-way as shown hereon; (2) further it adopts this plan of subdivision and reserves the fee simple title to the beds of the streets and/or roads hereon, except however, for one dollar consideration, it herewith grants the right and option to Howard County, Maryland to acquire (within a period of five years commencing with the date of recording of this plat among the Land Records of Howard County) the fee simple title to the beds of the streets and/or roads shown hereon, together with such adjacent land, if any, as may be shown on this plat as areas designated for the installation of street lighting facilities.

The undersigned certify that the subdivision plan shown hereon is correct as complying with the requirements of Final Development Plan Phase DB-II-A as shown on plats number 3373 and 3374, each inclusive, with all Open Space shown thereon to be used for drainage easements, if necessary, and the requirements of Article 21, Section 3-108 of the annotated code of Maryland concerning the making of this Plat and setting of markers have been complied with. The land shown hereon is a part of the land which by deed dated December 13, 1966 and recorded among the Land Records of Howard County, Maryland in Liber 463 Folio 196, was granted and conveyed by C. Aileen Ames to The Howard Research and Development Corporation.

PROFESSIONAL LAND SURVEYOR: (By) *[Signature]* 1992, PURDUM AND JESCHKE, Reg. No. 1023 N. Calvert St., Baltimore, Md. 21202

PROFESSIONAL ENGINEER: (By) *[Signature]*, PURDUM AND JESCHKE, Reg. No. 1023 N. Calvert St., Baltimore, Md. 21202

OWNERS: THE COLUMBIA PARK & RECREATION ASSOCIATION, COLUMBIA, MD. 21044; THE HOWARD RESEARCH & DEVELOPMENT CORPORATION, COLUMBIA, MD. 21044

RECORDED IN PLAT BOOK 3404 FOLIO —
on MARCH 17, 1976 among The
Land Records of Howard County, Maryland.

COLUMBIA
VILLAGE OF HICKORY RIDGE
SECTION 1 AREA 2
PARCEL A-1 & LOTS 329 AND 330
A RESUBDIVISION OF
VILLAGE OF HICKORY RIDGE
SECTION 1 AREA 2
PARCEL A & LOTS 314 AND 315

RECEIVED
MAR 24 1976
BUREAU OF ENGINEERING

Sheet 1 of 1
5th Election District of Howard County, Md.
Scale: 1" = 100' Date: JULY 3, 1975

BRUNING 44-512 2317

42

FB-10-32C